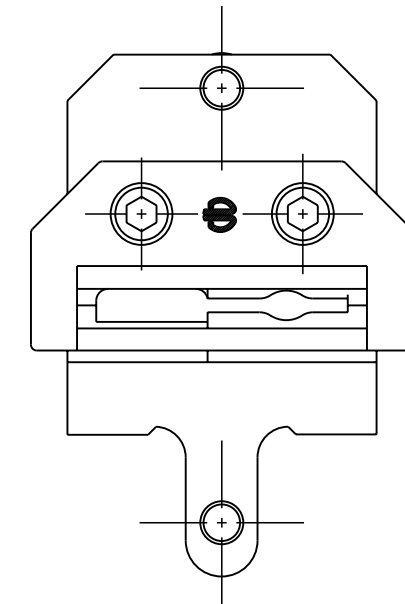
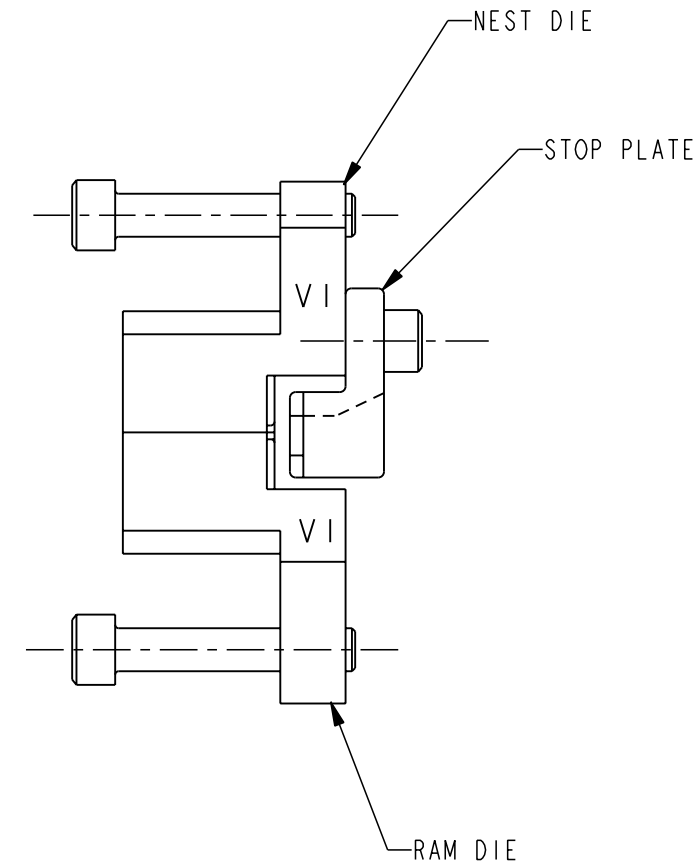
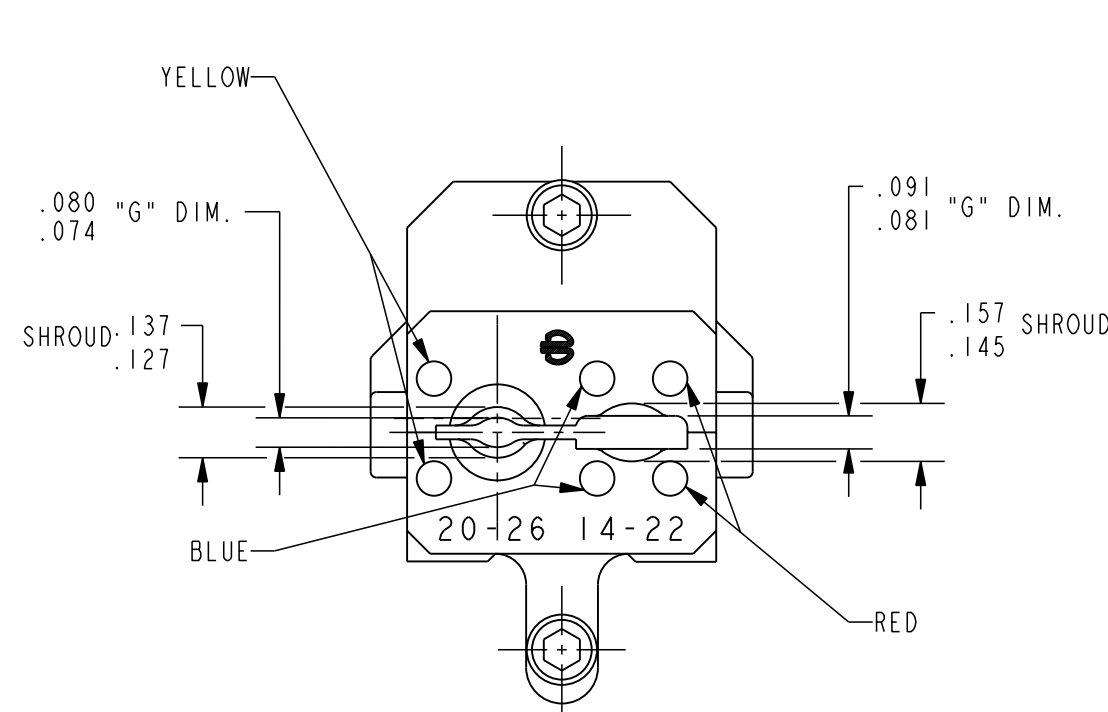


GROOVE	COLOR IDENTIFICATION	"G" DIMENSION "GO" "NO-GO" GAGE NO.	CONNECTOR SERIES	CONDUCTORS			
				MIL-W-SPEC.'S - SIZE & TYPE			
				5086	5086A	76A	16878C
20-26	YELLOW (AMBER)	PG202-1	YAE22-G12, -G13, -G14, -G15, -G16, -G18	26-TYPE I & II 24-TYPE I & II	22-TYPE I, II & III 20-TYPE I, II & III	24-TYPE MW 22-TYPE MW 20-TYPE MW	26-TYPE B & C 24-TYPE B & C 22-TYPE B & C 20-TYPE B & C
14-22	BLUE	PG203-1	YAE14N-	16-14	16-14	----	----
	RED		YAE18N-	22-18	22-18	----	----

REV.	DATE	DESCRIPTION	ECO	BY	C.H.K.
A	12/29/2010 1:47:00 PM	REDRAWN TO PROE	22830	RLB	MAC



NOTES:

DOTS COLOR CODED AS SHOWN

1. MATERIAL: ALLOY STEEL.
2. FINISH: NICKEL PLATING.
3. DIE SETS FOR USE IN M8ND RATCHET HYTOOL™ AND Y8ND PNEUMATIC HYPRESS.™
4. "SHROUD" DIMENSIONS REFER TO DIMENSION ACROSS INSULATION GRIP CLOSER SECTIONS OF DIE.
5. "G" DIMENSIONS REFER TO DIMENSION ACROSS CONDUCTOR CRIMP SECTIONS OF DIE.
6. THE TWO GAGES LISTED IN THE TABULATION ARE DOUBLE ENDED "GO NO-GO" PIN GAGES FOR VERIFYING THE "G" DIMENSION RANGES FOR THE TWO CRIMP GROOVES. THE DIE SET MUST BE BUTTED UNIFORMLY TO ALLOW USE OF THE GAGES.
7. THE DIE CRIMP GROOVES SHOULD BE CAREFULLY ALIGNED WHEN INSTALLED. THE CRIMP SURFACES MUST BE FREE OF DAMAGE, SCRATCHES, ANY LOOSE METAL CHIPS ETC.
8. ALIGN THE STOP PLATE BASED ON ALIGNMENT OF THE CONNECTOR TO BE CRIMPED AND TIGHTEN THE TWO SCREWS TO LOCK IT INTO ALIGNMENT. THE CONNECTOR MUST ALIGN UPSIDE DOWN IN THE TOP NEST DIE WITH THE TONGUE EXTENDING THROUGH THE STOP PLATE SLOT AND THE WIRE BARREL END PUSHED FIRMLY AGAINST THE STOP PLATE RAIL. THE STOP PLATE MUST BE PARALLEL TO THE DIE'S BUTTING SURFACES AND MUST NOT INTERFERE WITH THE RAM DIE CLOSING.
9. MAKE THE CONNECTION BY INSERTING THE CONNECTOR AS INDICATED AND PARTIALLY CLOSING THE TOOL TO RETAIN THE CONNECTOR ALIGNED AGAINST THE STOP. INSERT THE CORRECTLY STRIPPED CONDUCTOR END UNTIL IT CONTACTS THE STOP PLATE RAIL AND COMPLETE THE CRIMP UNTIL THE LAST RATCHET CLICK ALLOWS THE HANDLE TO OPEN.

TO ORDER BURNDY® PRODUCTS CALL

UNITED STATES:  
1-800-346-4175 (LONDONDERRY, NH)

CANADA:  
1-800-361-6975 (QUEBEC)  
1-800-387-6487 (ALL OTHER PROVINCES)

FOR PRODUCT INFO: <http://www.burndy.com>

"N" DIE SET

ITEM NO: 890572	DRAWING NO		REV
CAT. NO: N14HET25VI	DRAWING NO		REV
DRAWN BY: R. BOISVERT 12/29/10	SIZE	SHEET 1 OF 1	
CHECKER: M. CHIASSON 12/29/10	B	A	
DSN APPVL: M. CHIASSON 12/29/10	SCALE: 2:1		
MFG APPVL: --	SC044358		
QA APPVL: --	A		
MKT APPVL: --	A		
PROD FAM: Tools/N-DIES	A		
PROJECT #: --	A		
DOCUMENT TYPE: Production	A		
REL LEVEL: Released	A		