

DRAWING NO.
SC062621-01

4

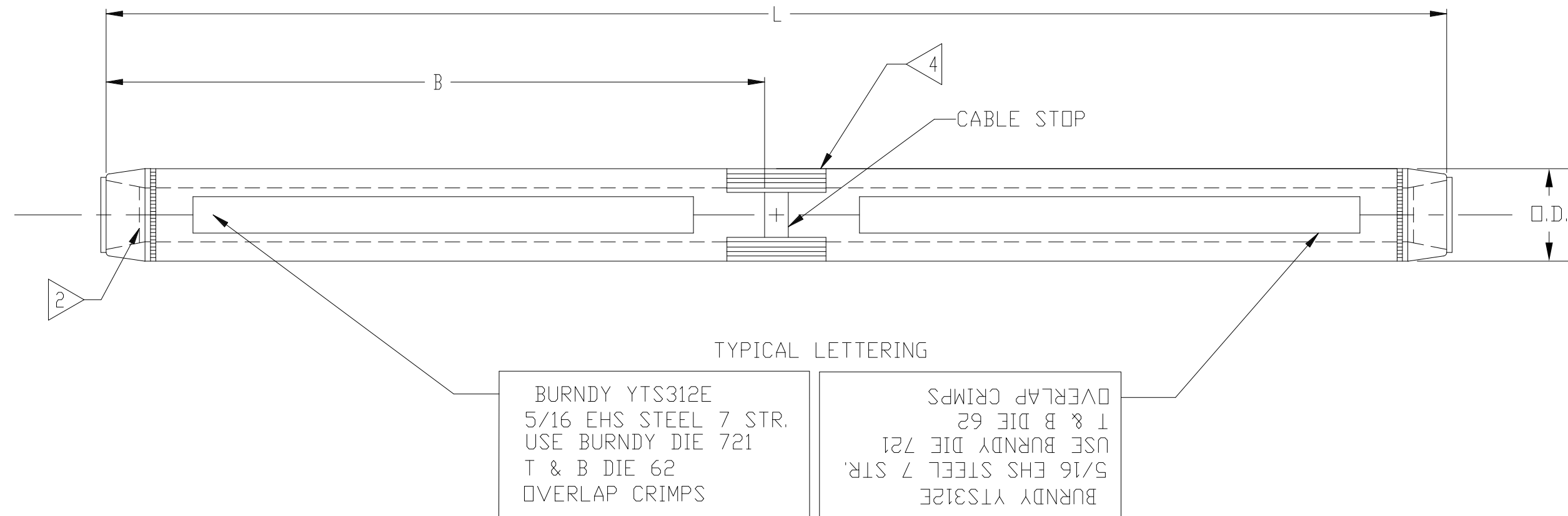
3

2

1

CATALOG NO.	ACCOMMODATES	B	L	O.D.	INSTALLATION TOOLING			
					DIE INFORMATION		HYDRAULIC	T & B DIE NO.
					DIE INDEX	TYPE		
YTS312E	5/16 EHS STEEL 7 STR.	5.55 [141]	12.00 [287]	.78 [20]	721	DIE SET	L 721	62
YTS438E	7/16 EHS STEEL 7 STR.	5.81 [148]	12.32 [313]	1.00 [25]	726		L 726	82
YTS375E	3/8 EHS STEEL 7 STR.	5.10 [130]	10.40 [264]	.88 [22]	723		L 723	72
YTS500E	1/2 EHS STEEL 7 STR.	8.24 [209]	16.63 [422]	1.19 [30]	789		L 789	96

REV.	DATE	DESCRIPTION	ECD	BY	C'K'D.
A	12/23/97	REDRAWN TO CAD. MODIFIED TABLE & NOTES	3451	BM	KH



NOTES:

1. MATERIAL: ALUMINUM
- BARREL PARTIALLY FILLED WITH PENETROX™ AND SEALED.
- OVERLAP CRIMPS.
- START AT CENTER & CRIMP TOWARD ENDS.
- THESE DIES MAKE A HEXAGONAL CRIMP.
6. DIMENSIONS IN BRACKETS [] ARE IN MILLIMETERS ROUNDED OFF TO THE NEAREST MILLIMETER, UNLESS OTHERWISE NOTED, AND ARE FOR REFERENCE ONLY.

TO ORDER BURNDY® PRODUCTS CALL		FULL TENSION HYSPLICET™ (STEEL)	
UNITED STATES: 1-800-346-4175 (LONDONDERRY, NH)		ITEM NO: N/A	
CANADA: 1-800-361-6975 (QUEBEC) 1-800-387-6487 (ALL OTHER PROVINCES)		CAT NO: YTS-E (TABLE)	
FOR PRODUCT INFO: http://www.burndy.com		SCALE: N/A	
		DRAWN BY: S.A.S. 11/16/96	
		CHECKER: MP 11/16/96	
		DSN APPVL: JB 11/21/96	
		MFG APPVL: --	
		QC APPVL: J BRODEUR 12/4/97	
		MKT APPVL: D HAMILTON 12/1/97	
		PROJ FAM: --	
		PROJECT #: --	
		DOCUMENT TYPE: Sales	
		REL LEVEL: AutoCAD	
		DRAWING NO SC062621-01	
		REV A	
		SHEET 1 OF 1	

4

3

2

1