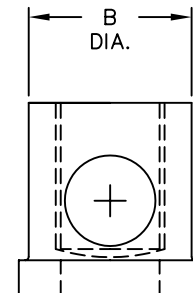
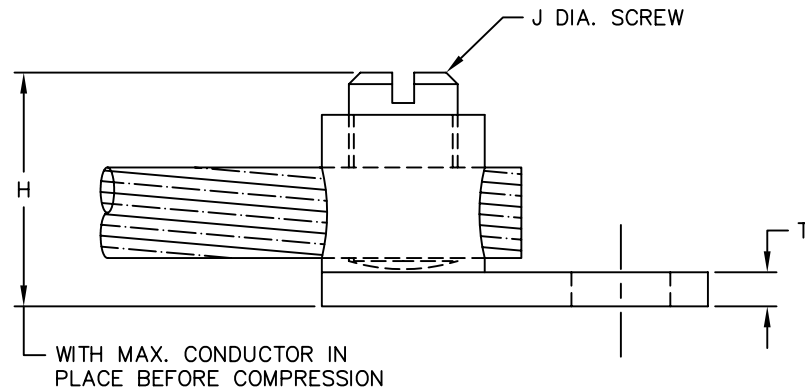
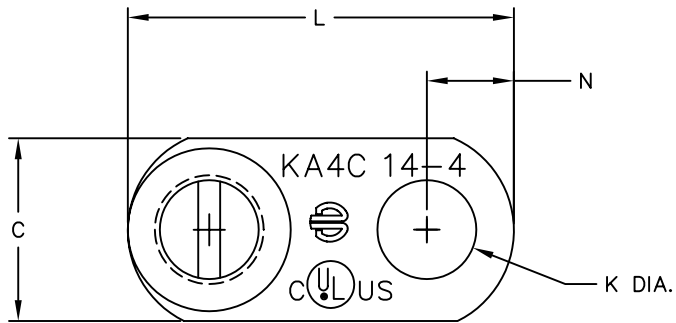


DRAWING NO.
SC088846-01

CATALOG NUMBER	ACCOMMODATES COPPER CABLE	B DIA.	C	H	J DIA. SCREW	K DIA.	L	N	T	FINISH	SCREW DESCRIPTION
KA8C	#14 SOL. (.064 DIA.)- #8 STR. (.146 DIA.)	8.1 .32	9.7 .38	15.42 .607	12-24UNC	5.3 .21	20.6 .81	4.8 .19	2.0 .08	---	FLAT HD. (ROUND TIP) ZINC PLATED SET SCREW, STEEL
KA4C	#14 SOL. (.064 DIA.)- #4 STR. (.232 DIA.)	11.9 .47	13.7 .54	19.6 .77	5/16"-24UNF	7.1 .28	28.2 1.11	6.4 .25	2.8 .10	---	
KA8CTN	#14 SOL. (.064 DIA.)- #8 STR. (.146 DIA.)	8.1 .32	9.7 .38	15.42 .607	12-24UNC	5.3 .21	20.6 .81	4.8 .19	2.0 .08	TIN PLATE	
KA4CTN	#14 SOL. (.064 DIA.)- #4 STR. (.232 DIA.)	11.9 .47	13.7 .54	19.6 .77	5/16"-24UNF	7.1 .28	28.2 1.11	6.4 .25	2.8 .10	TIN PLATE	FLAT HD. (FLAT TIP) NICKEL PLATED SCREW, STEEL
KA4CG16NKHEX	#14 SOL. (.064 DIA.)- #4 STR. (.232 DIA.)	11.9 .47	13.7 .54	26 1.02	5/16"-24UNF	8.1 .32	28.2 1.11	6.4 .25	2.8 .10	NICKEL PLATE	HEX HD. (FLAT TIP) NICKEL PLATED SCREW, STEEL
KA4CG16	#14 SOL. (.064 DIA.)- #4 STR. (.232 DIA.)	11.9 .47	13.7 .54	19.6 .77	5/16"-24UNF	8.1 .32	28.2 1.11	6.4 .25	2.8 .10	---	FLAT HD. (ROUND TIP) ZINC PLATED SET SCREW, STEEL

REV.	DATE	DESCRIPTION	ECO	BY	C'K'D.
B	06/13/07	CHG. THE MARKINGS OF THE PRODUCT DUE TO NEW VENDOR - SAGE	14520	RB	PL



NOTES:

- 1 NOT "UL" LISTED OR "CSA" CERTIFIED.
- 2. MATERIAL: BODY - COPPER ALLOY
FINISH - SEE ABOVE
SCREW DESC. - SEE ABOVE

TO ORDER BURNDY PRODUCTS CALL 1-800-346-4175
MANCHESTER, NH 03109, USA
FOR PRODUCT INFO = <http://www.fciconnect.com>

COPPER TERMINAL

ITEM NO: N/A
CAT NO: KA-C, KA-CTN, (TABLE)
SCALE: N/A
DRAWN BY: H.C. 3/14/84
CHECKER: A.J.M. 4/13/84
DSN APPVL: M.J.M. 6/12/84
MFG APPVL: ---
QC APPVL: ---
MKT APPVL: ---
PROD FAM: ---
PROJECT #: ---
DOCUMENT TYPE: Scales
REL LEVEL: AutoCAD

TO ORDER BURNDY® PRODUCTS CALL
UNITED STATES:
1-800-346-4175 (LONDONDERRY, NH)
CANADA:
1-800-361-6975 (QUEBEC)
1-800-387-6487 (ALL OTHER PROVINCES)
FOR PRODUCT INFO: <http://www.burndy.com>



DRAWING NO	REV
SC088846-01	B
SHEET 1 OF 1	