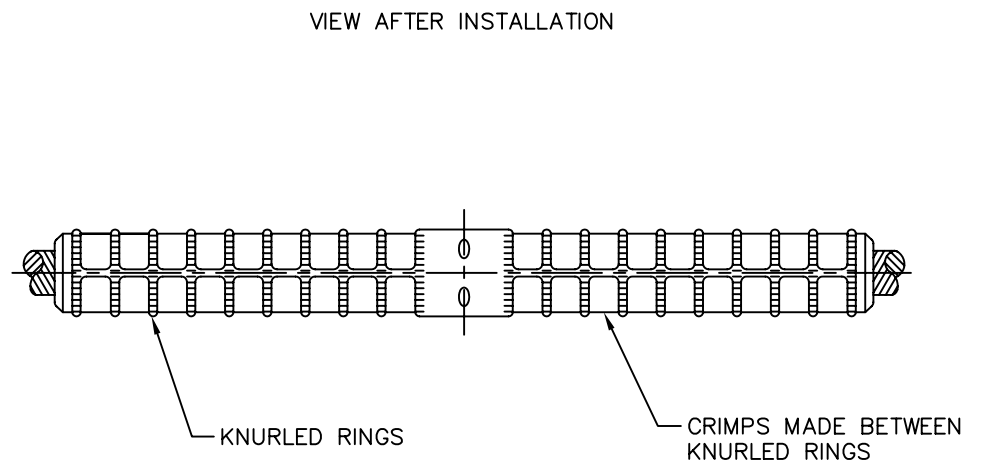
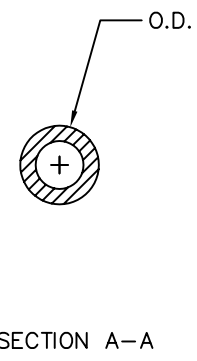
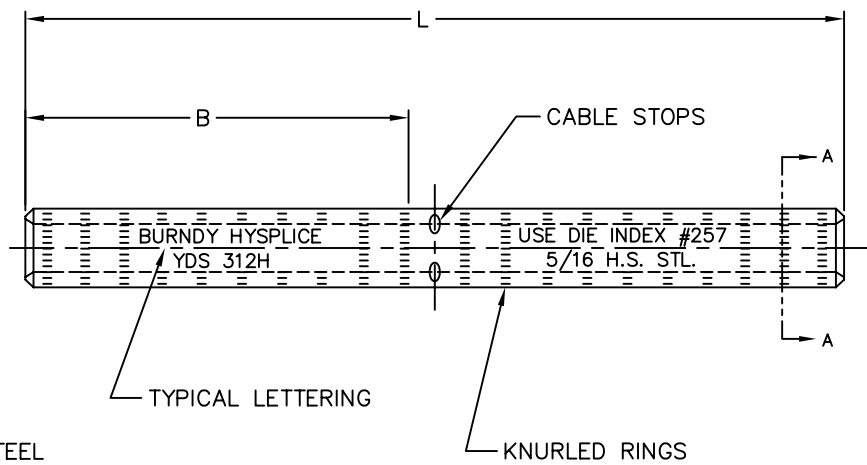


DRAWING NO.
SC18038-01

CAT. NO.	CONDUCTOR (STEEL)			O.D.	B APPROX	L APPROX	INSTALLATION DATA				REF. DWG.	
	SIZE	GRADE	STR.				INDEX NO.	HYPRESS™ DIE SET				CRIMPS PER END
								Y33RK	Y34A	Y48B		
YDS438H	7/16	H.S.	7	.84	4.13	8.75	314			C314	5	FC22713
YDS375H	3/8	H.S.& UT	7	.75	4.21	9.07	304			C304	4	FC19704
YDS500H	1/2	H.S.	7	.97	4.71	9.69	294 293			C294 C293	6	FC20178
YDS312E	5/16	E.H.S.	7	.71	3.89	8.41	341 305			C341 C305	3	FC21691
YDS312H	5/16	H.S.	7	.66	5.00	10.55	257		A312HYD	C257*	20	FC17633
YDS250E	1/4	E.H.S.	7	.59	2.98	6.75	609		A250EYD		10	FC31718
YDS438U	7/16	UT.G.	7	.97	4.66	9.90	293			C293	6	FC32588
YDS375E	3/8	E.H.S.	7	.86	4.61	9.81	313		△	C313	5	FC56894
YDS281U	9/32	UT.G S.M.	7	.64	2.73	5.88	607	K281UYDT			10	FC30782
YDS281E	9/32	E.H.S.	7	.64	3.26	6.97	253			C253	3	FC32744
YDS607G1	#8	130	3/.096	.39	1.88	4.03	242 244		A26RSYF	C242 C244	≠ 3	FC21940
YDS61G1	#6	130	3/.117	.47	2.17	4.50	248		A28RSYF	C248	≠ 6	FC21938

REV.	DATE	DESCRIPTION	ECO	BY	C'K'D.
A	05/17/10	REDRAWN TO AUTOCAD PER M/U.	20980	RB	PL



MATERIAL; STEEL
FINISH; GALVANIZED

NOTES:

- MULTIPLE CRIMPS DIES MAKING "X" CRIMPS SIMULTANEOUSLY.
*C312HYD-4-CRIMPS
≠C26RSYF-2 CRIMPS (WILL OVERLAP)
≠C28RSYF-2 CRIMPS
- △ Y35 HYPRESS™- 15 CRIMPS WITH U-313 DIE SET.

TO ORDER BURNDY® PRODUCTS CALL
UNITED STATES:
1-800-346-4175 (LONDONDERRY, NH)
CANADA:
1-800-361-6975 (QUEBEC)
1-800-387-6487 (ALL OTHER PROVINCES)
FOR PRODUCT INFO: <http://www.burndy.com>

HYSPLICE™ TENSION (STEEL CABLE)	
ITEM NO: --	
CAT NO: YDS- & YDS-G1 (SEE TABLE)	
SCALE: 1/1	
DRAWN BY: R. BOISVERT 05/17/10	
CHECKER: J. SYLVIA 04/30/10	
DSN APPVL: R. DEFRANCE 04/30/10	
MFG APPVL: J. HEAD 04/30/10	
QC APPVL: J. BRODEUR 05/03/10	
MKT APPVL: J. SYLVIA 04/30/10	
PROD FAM: --	
PROJECT #: --	SIZE
DOCUMENT TYPE: Sales	D
REL LEVEL: AutoCAD	
DRAWING NO	REV
SC18038-01	A
SHEET 1 OF 1	

