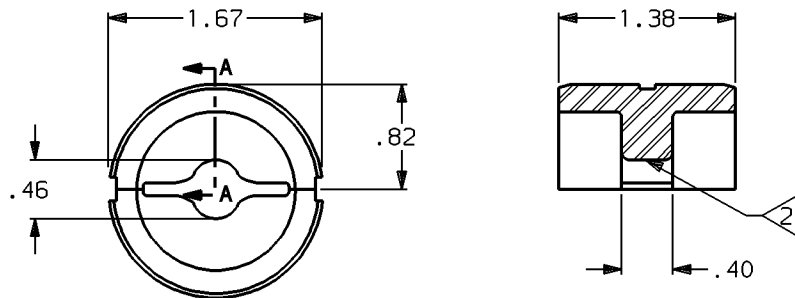
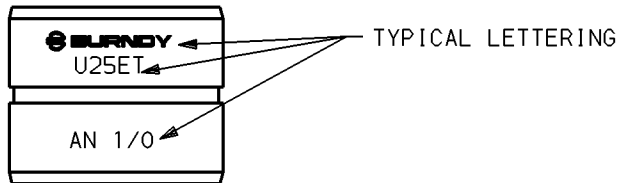


# ACCOMMODATES

REV.	DATE	DESCRIPTION	BY	C'K'D.
1	6/16/93	ADDED "T" SUFFIX TO CAT# ON DIE. REMOVED NOTE 3. (PCN 1293)	JLM	RER

CONNECTOR	CONDUCTOR
YAEV25..SERIES	AN 1/0



SECTION A-A

U25ET BUTTING DIE

FEATURES: HARDENED ALLOY STEEL, BLACKENED.  
 : EMBOSSES CONNECTOR WHEN CRIMPING  
 : STAMPED FOR DIE SET IDENTIFICATION.

## NOTES:

1. DIE SET MAY BE USED IN ALL VERSIONS OF THE Y39, Y35, Y750 HYPRESS TOOLS.
2. DIE SET CONTAINS RECESSED LETTERING IN CRIMP GROOVE THUS CONNECTORS ARE EMBOSSED WITH "1/0" WHEN CRIMPING.
3. REMOVED PER PCN 1293.

CIRCULAR TWIN DIE			
CAT NO: U25ET		SCALE FULL SIZE	
DRAWN: J. MICHAUD	4/15/93	CHECKED: R. ROBICHEAU	4/15/93
DSGN APPVL: J. LEFAVOUR	4/16/93	DSGN APPVL: R. MACDONALD	4/16/93
Q.A. APPVL: A. LLOYD	4/23/93	MKTG APPVL: M. BLAKE	4/19/93
CAD FILE: SC208425-SHT01		PM REF: N/A	
		MDL REF: N/A	
		PROJECT: DO 52622	
		DRAWING NO.	REV
		SC208425	1
		SHEET 1 OF 1	

REV: 111991