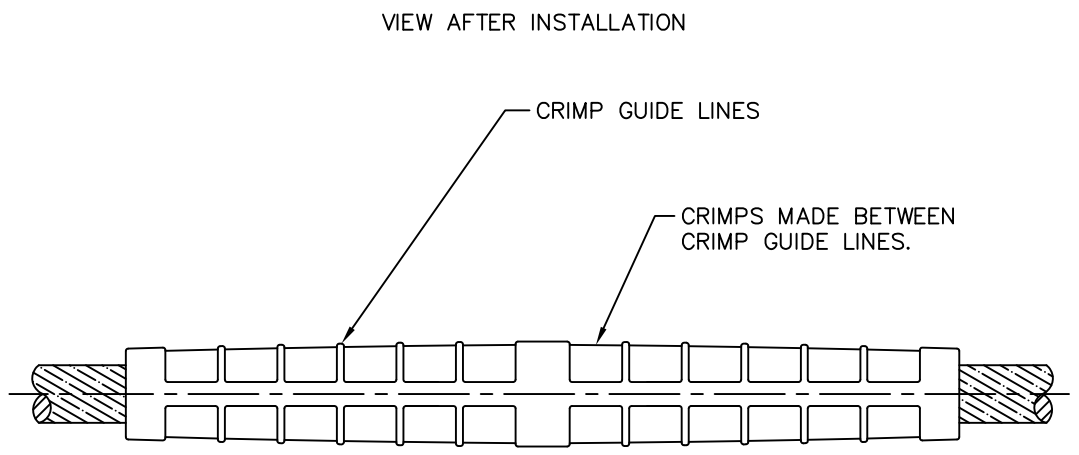
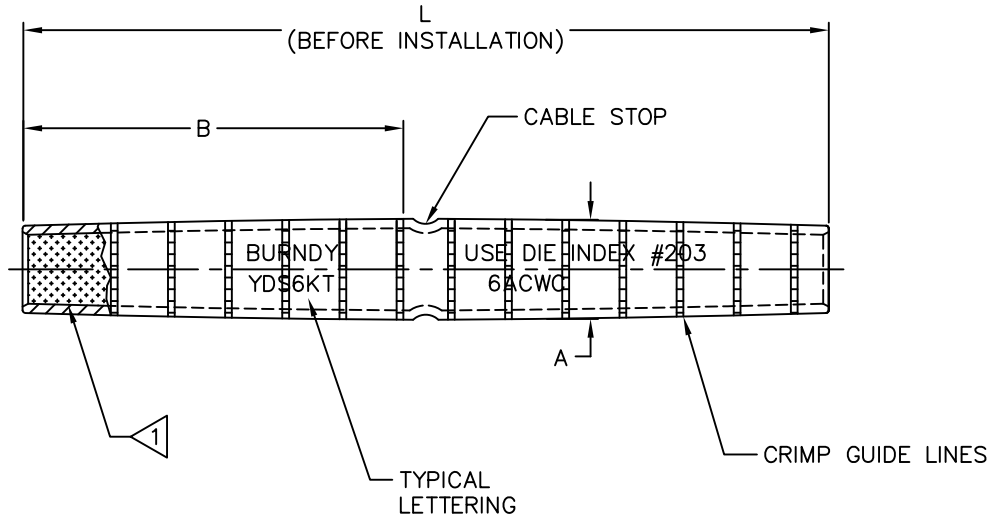


DRAWING NO.
SC24477-01

REV.	DATE	DESCRIPTION	ECO	BY	C'K'D.
B	11/20/2014	UPDATE INSTALLATION DATA PER M/U.	38357	RB	WZ

CATALOG NO.	CONDUCTOR COPPERWELD-COPPER			INSTALLATION DATA							
	SIZE	STR.		A	B	L	INDEX NO.	HYTOOL™ WITH NO. OF CRIMPS-EACH END		HYPRES™ DIE SET & NO. OF CRIMPS - EACH END	
		CW	CU					MD6 & DIE SET	Y35		
YDS8KT	8A (.199)	1	2	.41	2.31	4.80	202	--	-	U202	8
							162	W-162	8	U162	8
YDS6KT	6A (.230)	1	2	.43	2.83	6.06	203	--	-	U203	10
							162	W-162	10	U162	10
YDS4KT	4A (.290)	1	2	.54	3.03	6.28	204	--	-	U204	10
							163	W-163	10	U163	10
YDS3KT	3A (.326)	1	2	.62	3.70	7.72	373	--	-	U373	8
YDS2KT	2A (.366)	1	2	.67	3.72	7.68	U165	--	-	--	-
							205	W-165	8	--	-



NOTE:

▶ MATERIAL: COPPER TUBE
BARREL LINED UNIFORMLY WITH PENETROX™

TO ORDER BURNDY® PRODUCTS CALL
UNITED STATES:
1-800-346-4175 (LONDONDERRY, NH)
CANADA:
1-800-361-6975 (QUEBEC)
1-800-387-6487 (ALL OTHER PROVINCES)
FOR PRODUCT INFO: <http://www.burndy.com>

HYSPLICE™, TENSION (CU-WELD-CU)	
ITEM NO: --	
CAT NO: YDS-KT (SEE TABLE)	
SCALE: N/A	
DRAWN BY: R. BOISVERT 10/23/08	
CHECKER: P. LAPONIUS 10/24/08	
DSN APPVL: W. ZAHLMAN 08/01/08	
MFG APPVL: --	
QC APPVL: C. ACKERMAN 08/18/08	
MKT APPVL: D. HAMILTON 08/26/08	
PROD FAM: --	
PROJECT #: --	SIZE
DOCUMENT TYPE: Sales	D
REL LEVEL: AutoCAD	
DRAWING NO	REV
SC24477-01	B
SHEET 1 OF 1	

