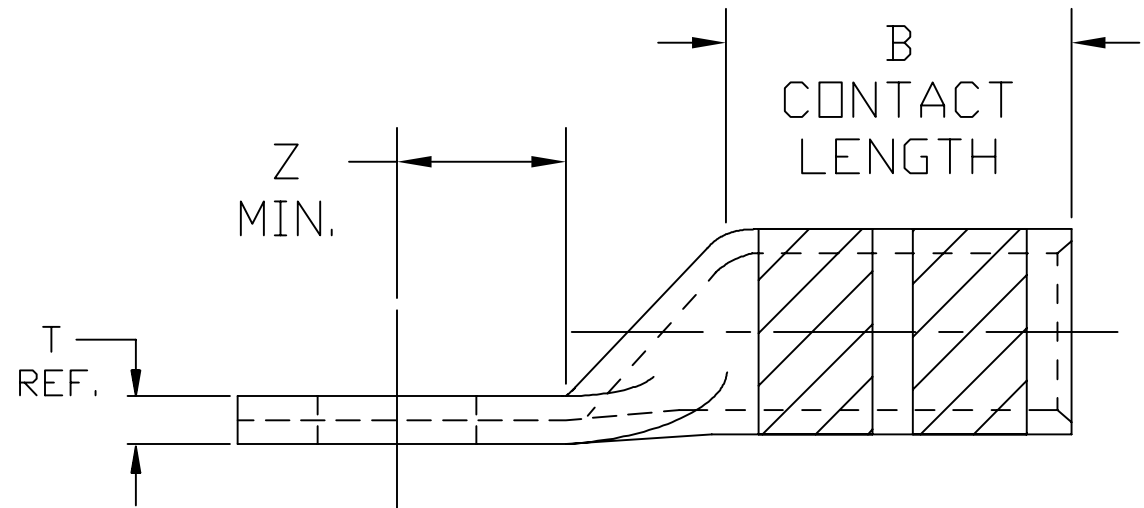
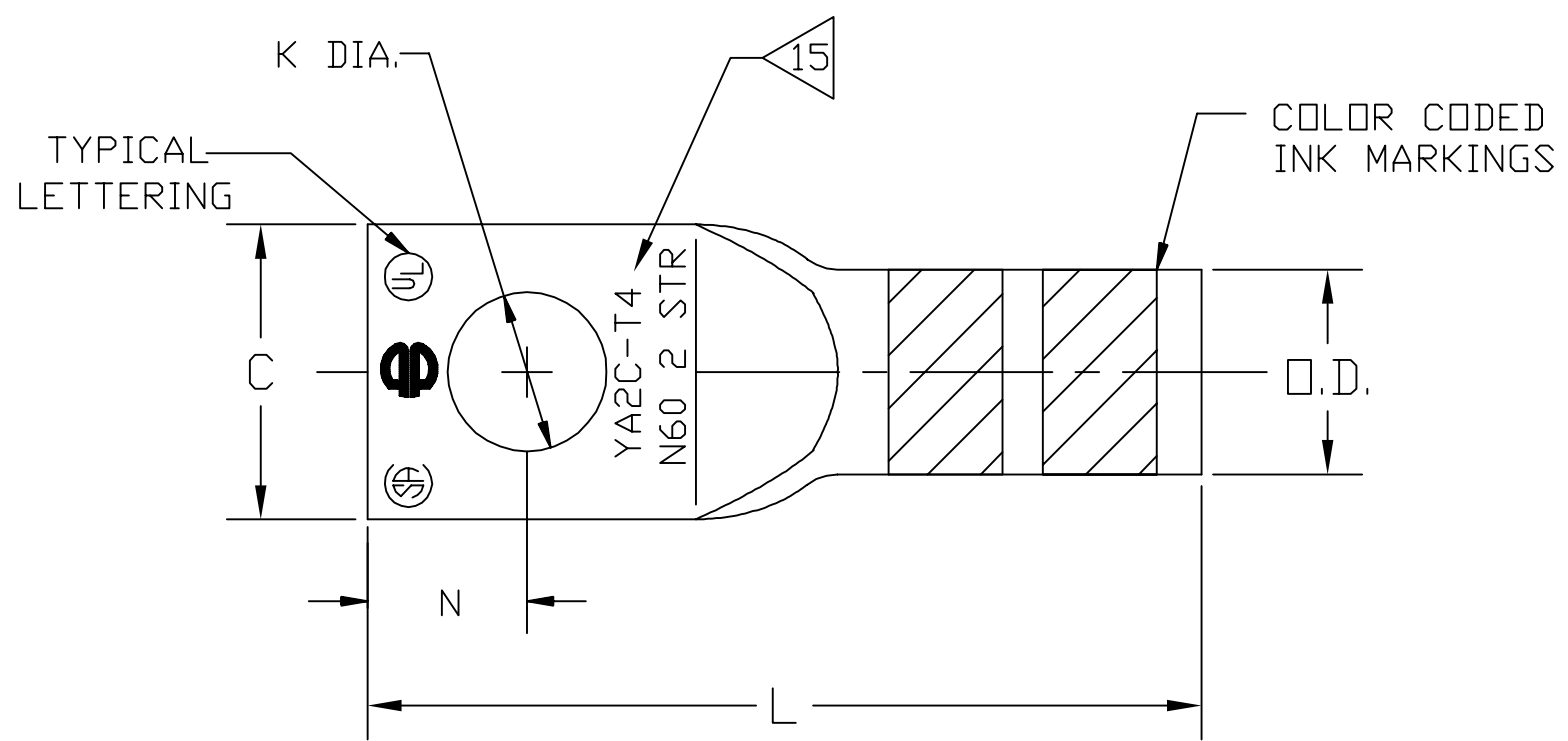


INSTALLATION TOOLING (# CRIMPS)

CATALOG NUMBER	COMMERCIAL COPPER CABLE	BOLT SIZE	METRIC BOLT SIZE	DIMENSIONS									COLOR CODE	DIE INFORMATION		MECHANICAL					HYDRAULIC				DIELESS (# CRIMPS)	WIRE STRIP LENGTH
				B ±.06	C ±.03	K DIA. ±.02	L ±.09	N ±.06	D.D. ±.01	T REF.	Z MIN.	DIE INDEX		TYPE	Y122CMR	DUR840	MD6 MD7	MD6--R2 BAT500	MD7-34R	Y34A Y34B Y34BH	Y35, Y39 Y750, BAT35 BAT750, PAT750	Y46	Y45			
YA6C-T3	#6 STR. (.184) #6 SOL	5/16"	M8	1.12 [28]	.53 [14]	.34 [9]	2.13 [54]	.38 [10]	.29 [7]	.06 [2]	.36 [9]	BLUE	7	BLUE DIE SET NEST INDENTOR		X5CRT (2)	W5CRT(2) W5CVT(2)	W5CRT(2) W5CVT(2)	W5CRT(2) W5CVT(2)	----- B6CD(1) A6CD(1) Y34PR	U5CRT(2) U8CABT(2) Y34PR	U5CRT(2) U8CABT(2) Y34PR	U5CRT(2) U8CABT(2) Y34PR	MECHANICAL: MY29-3 (2) MY29-11 (2) HYDRAULIC: Y644M (1) PAT644 (1)	1-3/16"	
YA6C-T4	#6 STR. (.184) #6 SOL	3/8"	-----	1.12 [28]	.58 [15]	.40 [10]	2.13 [54]	.38 [10]	.29 [7]	.06 [2]	.36 [9]	BLUE	7	BLUE DIE SET NEST INDENTOR		X5CRT (2)	W5CRT(2) W5CVT(2)	W5CRT(2) W5CVT(2)	W5CRT(2) W5CVT(2)	----- B6CD(1) A6CD(1) Y34PR	U5CRT(2) U8CABT(2) Y34PR	U5CRT(2) U8CABT(2) Y34PR	U5CRT(2) U8CABT(2) Y34PR		1-3/16"	
YA6C-T1	#6 STR. (.184) #6 SOL	#10	-----	1.12 [28]	.41 [10]	.20 [5]	1.86 [47]	.25 [6]	.29 [7]	.09 [3]	.22 [6]	BLUE	7	BLUE DIE SET NEST INDENTOR		X5CRT (2)	W5CRT(2) W5CVT(2)	W5CRT(2) W5CVT(2)	W5CRT(2) W5CVT(2)	----- B6CD(1) A6CD(1) Y34PR	U5CRT(2) U8CABT(2) Y34PR	U5CRT(2) U8CABT(2) Y34PR	U5CRT(2) U8CABT(2) Y34PR		1-3/16"	
YA4C-T6	#4 STR (.232)	1/2"	M12	1.12 [28]	.75 [19]	.52 [13]	2.52 [64]	.53 [13]	.34 [9]	.06 [2]	.54 [14]	GRAY	8 346	GRAY DIE SET NEST INDENTOR	GRAY(4)	X4CRT(2)	W4CRT(2) W4CVT(2)	W4CRT(2) W4CVT(2)	W4CRT(2) W4CVT(2)	----- B4CD(1) A4CD(1) Y34PR	U4CRT(2) U6CABT(2) Y34PR	U4CRT(2) U6CABT(2) Y34PR	U4CRT(2) U6CABT(2) Y34PR		17	1-3/16"
YA4C-T7	#4 STR (.232)	3/8"	-----	1.12 [28]	.58 [15]	.40 [10]	2.27 [58]	.41 [10]	.34 [9]	.08 [2]	.42 [11]	GRAY	8 346	GRAY DIE SET NEST INDENTOR	GRAY(4)	X4CRT(2)	W4CRT(2) W4CVT(2)	W4CRT(2) W4CVT(2)	W4CRT(2) W4CVT(2)	----- B4CD(1) A4CD(1) Y34PR	U4CRT(2) U6CABT(2) Y34PR	U4CRT(2) U6CABT(2) Y34PR	U4CRT(2) U6CABT(2) Y34PR			1-3/16"
YA2C-T4	#2 STR (.292)	3/8"	-----	1.25 [32]	.66 [17]	.40 [10]	2.43 [62]	.41 [10]	.42 [11]	.11 [3]	.42 [11]	BROWN	10	BROWN DIE SET NEST INDENTOR	BROWN(4)	X2CRT(2)	W2CRT(2) W2CVT(2)	W2CRT(2) W2CVT(2)	W2CRT(2) W2CVT(2)	----- B2CD(1) A2CD(1) Y34PR	U2CRT(2) Y34PR	U2CRT(2) Y34PR	U2CRT(2) Y34PR			1-5/16"
YA2C-T6	#2 STR (.292)	1/2"	M12	1.25 [32]	.81 [21]	.52 [13]	2.74 [70]	.56 [14]	.42 [11]	.08 [2]	.56 [14]		11 OR 375	GREEN DIE SET NEST INDENTOR		X1CRT-1 (2)	W1CRT-1(2) W1CVT(3)	W1CRT-1(2) W1CVT(3)	W1CRT-1(2) W1CVT(3)	----- B1CD(1) A1CD(1) Y34PR	U1CRT(2) Y34PR	U1CRT(2) Y34PR	U1CRT(2) Y34PR		1-1/2"	

NOTES:

- MATERIAL: COPPER TUBING.
- FINISH: TIN PLATED.
- CATALOG # PT6515 ADAPTOR IS REQUIRED TO USE "U" DIES IN Y45 SERIES TOOLS.
- CATALOG # PUADP-1 ADAPTOR IS REQUIRED TO USE "U" DIES IN Y46 SERIES TOOLS.
- Y35P3 INDENTOR ADAPTOR REQUIRED FOR Y34PR INDENTOR.
- PERMANENT DIE IN TOOLING.
- DIMENSIONS IN BRACKETS [] ARE IN MILLIMETERS ROUNDED OFF TO THE NEAREST MILLIMETER, UNLESS OTHERWISE NOTED, AND ARE FOR REFERENCE ONLY.
- FOR USE BY CUSTOMERS THAT HAVE THIS HYPRESS, NO NEW HYPRESS TOOLS ARE BEING PROCESSED. Y34A USES A--D NEST DIES ONLY.
- CONNECTORS ARE UL LISTED.
- CONNECTORS ARE CSA CERTIFIED.
- FOR OIL TIGHT SEALED VERSIONS ADD SUFFIX "-DT" OR "-DTS".
- "X", "W-RT", "W-VT", & "U" DIE SETS ARE COLOR CODED. "A" & "B" DIES ARE NOT COLOR CODED. NESTS AND INDENTOR TYPE ARE NOT COLOR CODED.
- THE CATALOG NUMBER FOR THE HYLUG WITH COLOR DOT ONLY IS YA2C-T37
- THE Y500CT & BCT500 HYDRAULIC TOOL MAY ALSO BE USED. THESE TOOLS USE ALL "X" AND "W" DIES SHOWN IN THE MECHANICAL RATCHET COLUMN PER BARREL SIZE. (EX. USE X5CRT, W5CRT, & W5CVT DIES FOR YA6C-T3).
- WHERE SPACE LIMITATIONS PERMIT, THE CATALOG NUMBER STAMPED ON THE PART WILL BE YA-T SUFFIX DESIGNATION.
- FOR 6C, 4C AND 2C SIZES ONLY.
- DO NOT USE PAT644 OR Y644 TOOLING WITH 6 AWG SOL.



TO ORDER BURNDY® PRODUCTS CALL
 UNITED STATES:
 1-800-346-4175 (LONDONDERRY, NH)
 CANADA:
 1-800-361-6975 (QUEBEC)
 1-800-387-6487 (ALL OTHER PROVINCES)
 FOR PRODUCT INFO: <http://www.burndy.com>

HYLUG™	
ITEM NO: N/A	
CAT NO: YA-C-T- (TABLE)	
SCALE: N/A	DRAWN BY: ASM 5/15/81
CHECKER: CAR 5/18/81	DSN APPVL: LB 5/19/81
MFG APPVL: --	QC APPVL: J BRODEUR 12/27/96
MKT APPVL: G SCHWEBLER 12/26/96	DRAWING NO: SC084945-01
PROD FAM: --	REV: C
PROJECT #: --	SIZE: D
DOCUMENT TYPE: Sales	SHEET 1 OF 1
REL LEVEL: AutoCAD	

REV.	DATE	DESCRIPTION	ECO	BY	C'K'D.
C	06/16/2015	ADDED "#6 SOL" TO YA6C CATALOGS, CHANGED FROM "Y2MR" TO "Y122CMR" IN TABLE AND ADDED NOTE 16.	40605	ARJ	DD