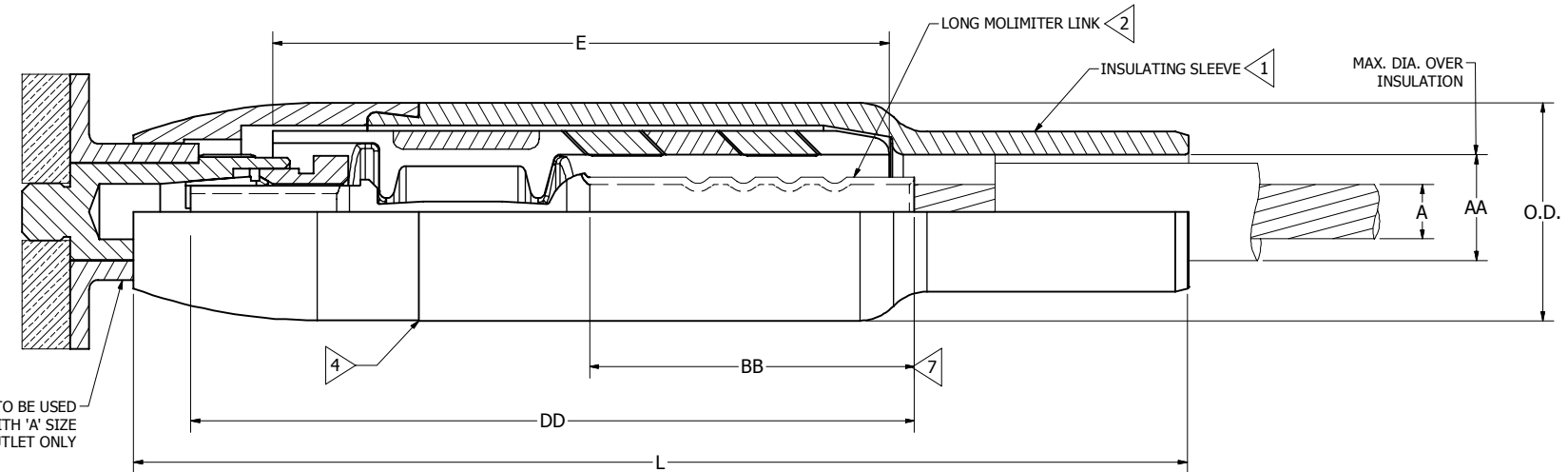
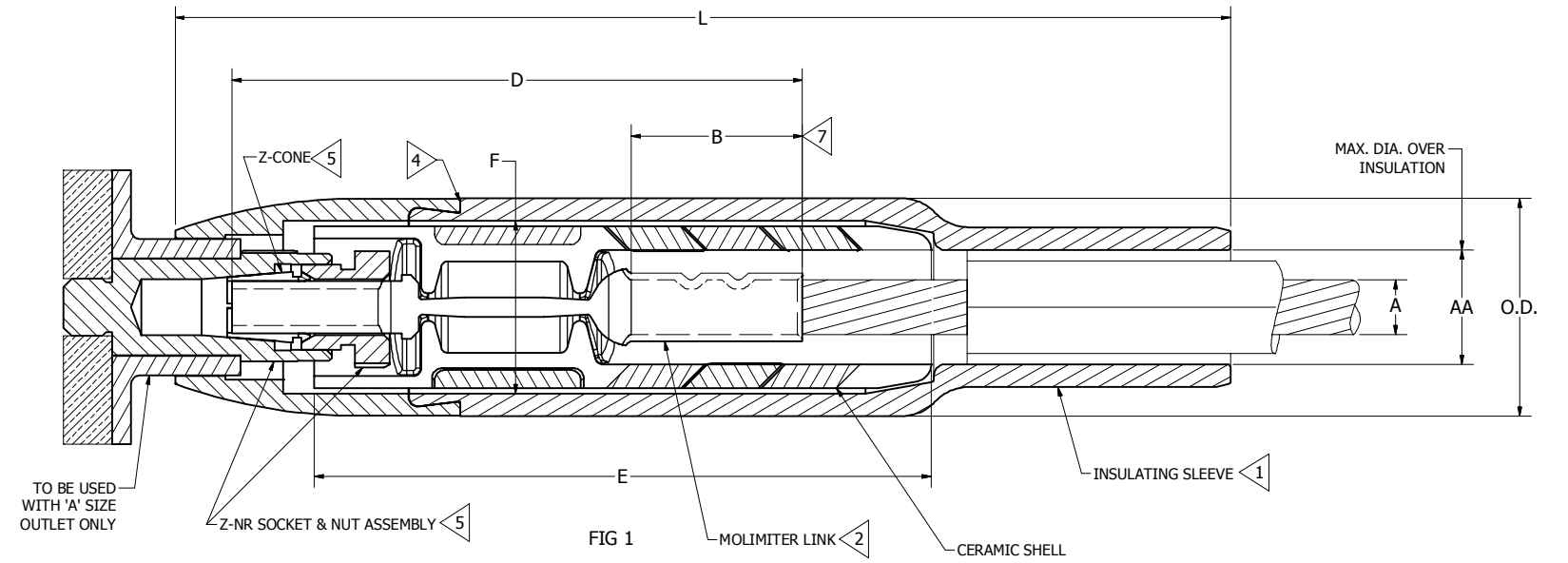


RUBBER-INSULATED CABLE	PAPER-INSULATED CABLE					A CABLE SIZE	AA	B	BB	D	DD	E	F	L	O.D.	FOR CONNECTION TO MOLE USE	
	CAT. NO.	FIG. NO.	CAT. NO. (SHORT)	FIG. NO.	CAT. NO. (LONG)											FIG. NO.	Z-NR SOCKET & NUT ASSEMBLY
YFM27CR	1	YFM27CP	1	YFM27CPL	2	3/0 STR (.470)	1.34	1.86	--	6.22	--	6.76	1.89	11.50	2.38	Z28NR	Z2828
YFM28CR	1	YFM28CP	1	YFM28CPL	2	4/0 STR (.528)	1.34	1.86	3.06	6.22	7.25	6.76	1.89	11.50	2.38	Z28NR	Z2828
YFM29CR	1	YFM29CP	1	YFM29CPL	2	250 KCMIL (.575)	1.34	1.88	3.56	6.19	7.88	6.76	1.89	11.50	2.38	Z29NR	Z2929
YFM30CR	1	YFM30CP	1	YFM30CPL	2	300 KCMIL (.630)	1.34	2.00	3.67	6.81	8.48	6.76	1.89	11.50	2.38	Z30NR	Z3030
YFM31CR	1	YFM31CP	1	YFM31CPL	2	350 KCMIL (.681)	1.34	2.00	3.69	6.94	8.62	6.76	1.89	11.50	2.38	Z32NR	Z3132
YFM32CR	1	YFM32CP	1	YFM32CPL	2	400 KCMIL (.728)	1.34	2.12	3.81	7.27	8.75	6.76	1.89	11.50	2.38	Z32NR	Z3232
YFM34CR	1	YFM34CP	1	YFM34CPL	2	500 KCMIL (.814)	1.34	2.75	4.31	8.26	9.90	6.76	1.89	11.50	2.38	Z34NR	Z3434

REV	DATE	DESCRIPTION	ECO	BY	C'H'K.
A	02/20/2014	LIMITER SHELL REPLACED AS PER ECO	33547	PB	VK

CATALOG NO.	INSTALLATION TOOLING (# CRIMPS)									
	DIE INFORMATION		HYDRAULIC						WIRE STRIP LENGTH	
	DIE INDEX	TYPE	Y34A	Y750, PAT750, Y35, Y39	PAT46, Y46	Y45	Y48B	Y60BHU	YFM--CR YFM--CP	YFM--CPL
YFM27--	15	PURPLE DIE SET	--	U28RT (2)	U28RT (2)	U28RT (2)	C28R (2)	L28RT (1)	2.50	3.75
		NEST INDENTOR	A28D (1) Y34PR	U28D-I (1) Y34PR	U28D-I (1) Y34PR	U28D-I (1) Y34PR	C28D (1) Y48PR	--		
YFM28--	15	PURPLE DIE SET	--	U28RT (2)	U28RT (2)	U28RT (2)	C28R (2)	L28RT (1)	2.50	3.75
		NEST INDENTOR	A28D (1) Y34PR	U28D-I (1) Y34PR	U28D-I (1) Y34PR	U28D-I (1) Y34PR	C28D (1) Y48PR	--		
YFM29--	16	YELLOW DIE SET	--	U29RT (2)	U29RT (2)	U29RT (2)	C29R (2)	L29RT (1)	2.50	3.75
		NEST INDENTOR	A29D (2) Y34PR	U29D-I (2) Y34PR	U29D-I (2) Y34PR	U29D-I (2) Y34PR	C29D (1) Y48PR	--		
YFM30--	17	WHITE DIE SET	--	U30RT (4)	U30RT (4)	U30RT (4)	C30R (1)	L30RT (1)	2.50	3.75
		NEST INDENTOR	A30D (2) Y34PR	U30D-I (2) Y34PR	U30D-I (2) Y34PR	U30D-I (2) Y34PR	C30D (2) Y48PR	--		
YFM31--	18	RED DIE SET	--	U31RT (4)	U31RT (4)	U31RT (4)	C31R (1)	L31RT (1)	2.50	3.75
		NEST INDENTOR	A31D (2) Y34PR	U31D-I (2) Y34PR	U31D-I (2) Y34PR	U31D-I (2) Y34PR	C31D (1) Y48PR	--		
YFM32--	19	BLUE DIE SET	--	U32RT (4)	U32RT (4)	U32RT (4)	C32R (1)	L32RT (1)	2.50	4.50
		NEST INDENTOR	A32D (2) Y34PR	U32D-I (2) Y34PR	U32D-I (2) Y34PR	U32D-I (2) Y34PR	C32D (2) Y48PR	--		
YFM34--	20	BROWN DIE SET	--	U34RT (4)	U34RT (4)	U34RT (4)	C34R (2)	L34RT (2)	3.25	4.50
		NEST INDENTOR	A34D (2) Y34PR	U34D-I (2) Y34PR	U34D-I (2) Y34PR	U34D-I (2) Y34PR	C34D (2) Y48PR	--		

- NOTES:
- 1> WHEN FURNISHED WITHOUT RUBBER INSULATING SLEEVE 'C' IS REMOVED FROM CAT. NO.; EXAMPLE YFM29CR BECOMES YFM29R.
 - 2> YFM-CP & YFM-CPL LIMITER LINKS BRAZED TO MAKE OIL TIGHT SEAL.
 3. MAXIMUM VOLTAGE RATING: 250 VOLTS.
 - 4> THE ENDS AND THE JUNCTION OF THE TWO SLEEVE HALVES SHOULD BE SEALED BY TAPING.
 - 5> MOLE, CONE AND SOCKET AND NUT ASSEMBLY ARE NOT INCLUDED IN CAT. NO. AND MUST BE ORDERED SEPARATELY.
 - 6> FOR Z-NR SOCKET & NUT ASSEMBLY CROSS FLATS DIMENSIONS AND RECOMMENDED INSTALLATION TORQUE, REFER TO 50032378.
 - 7> CRIMP AREA.
 - 8> CATALOG NUMBER "PT6515" ADAPTOR IS REQUIRED TO USE "U" TYPE DIES IN THE Y45 SERIES TOOLS.
 - 9> CATALOG NUMBER "PUADP-1" ADAPTOR IS REQUIRED TO USE "U" TYPE DIES IN THE Y46 SERIES TOOLS.
 - 10> Y35P3 INDENTOR ADAPTOR IS REQUIRED FOR Y34PR INDENTOR.
 11. THIS DRAWING TO BE INTERPRETED PER ASME Y14.5M-2009.



REFERENCES:
FOR LARGER SIZES SEE SC..027963-01, SD..029052-01
SUPERSEDES SD..09349-02

TO ORDER BURNDY® PRODUCTS CALL		MOLIMITER™	
UNITED STATES 1-800-346-4175 (LONDONDERRY, NH)		ITEM NO: ---	
CANADA: 1-800-361-6975 (QUEBEC) 1-800-387-6487 (ALL OTHER PROVINCES)		CAT. NO: YFM-- (SEE TABLE)	
FOR PRODUCT INFO: http://www.burndy.com		DRAWN BY: P.D. 8/26/1953	
		CHECKER: ---	
		DSN APRVL: ---	
		MFG APRVL: ---	
		QA APRVL: ---	
		MKT APRVL: ---	
		PROD FAM: ---	
		PROJECT #: ---	
		DOCUMENT TYPE: SALES	
		REL LEVEL: Released	
		DRAWING NO: SD009349-01	
		SHEET 1 OF 1	
		REV: A	