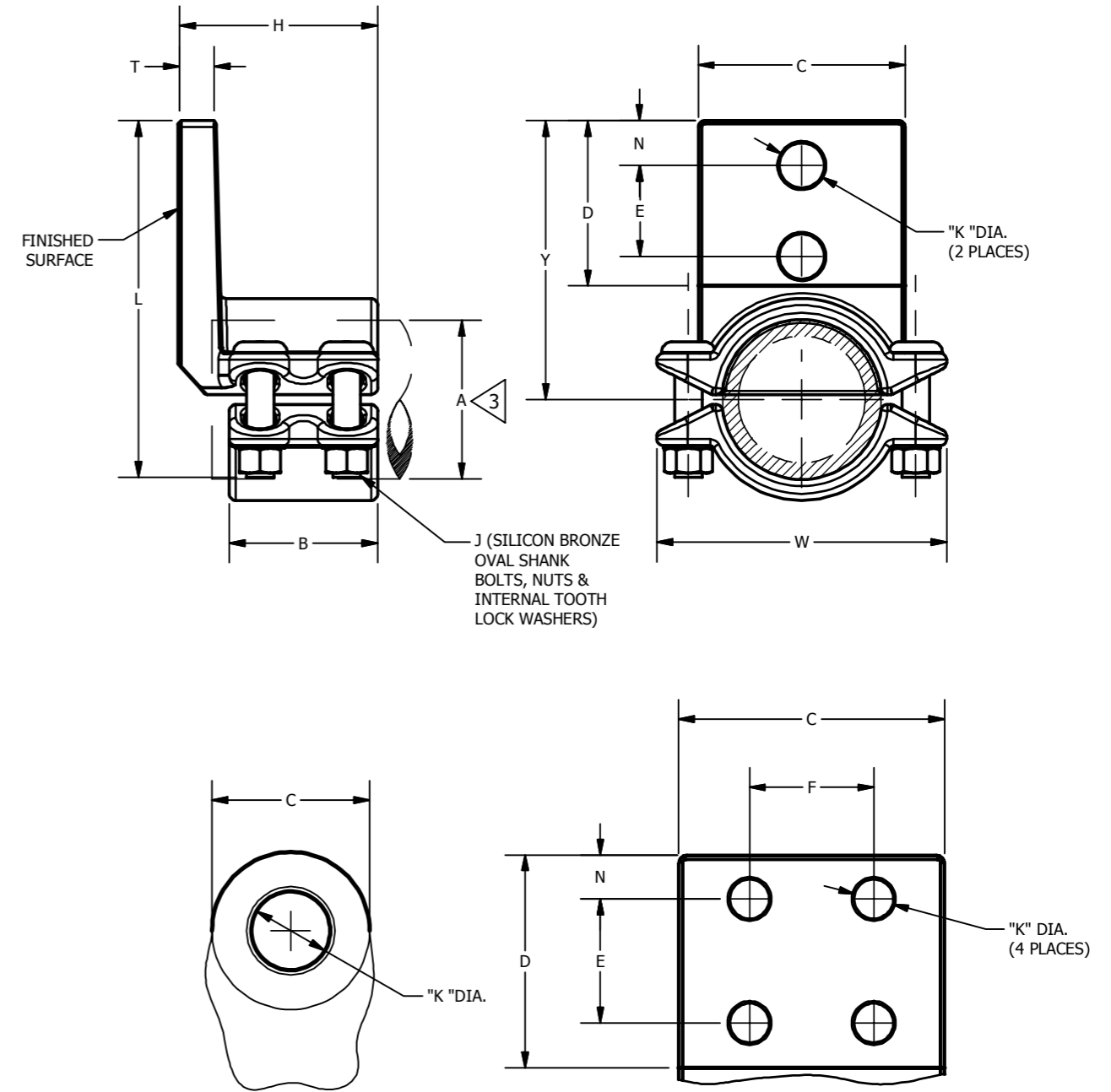


CATALOG NO.	ITEM NO.	ACCOMMODATES "A"	NO. OF HOLES IN PAD	B	C	D	E & F	H	J	K	L	N	T	W	Y
NA1290	50031326	3/8" (.675 [17] DIA.)	1	1.38 [35]	1.50 [38]	-	-	2.44 [62]		.44 [11]	3.06 [78]	.75 [19]	.25 [6]	2.12 [54]	2.22 [56]
NA12290	50031327		2		1.38 [35]	1.88 [48]	1.00 [25]					3.44 [87]			.44 [11]
NA1390	50031328	1/2" (.840 [21] DIA.)	1		1.62 [41]	-	-	2.50 [64]		.56 [14]	3.41 [87]	.81 [21]		2.25 [57]	2.44 [62]
NA13290	50031329		2		1.50 [41]	2.00 [51]	1.12 [28]					3.81 [97]			.44 [11]
NA132N90	000341	3/4" (1.050 [27] DIA.)	1	2.00 [51]	3.00 [76]	1.75 [44]		2.56 [65]	.38 [10]	.56 [14]	4.81 [122]	.62 [16]		2.44 [62]	3.83 [97]
NA1490	50031330				2	1.75 [44]	2.25 [57]				1.38 [35]				5.03 [128]
NA14290	50031331	1" (1.315 [33] DIA.)	2	2.00 [51]	3.00 [76]	1.75 [44]		2.56 [65]	.38 [10]	.56 [14]	5.09 [129]	.62 [16]		2.75 [70]	3.94 [100]
NA142N90	290140				4	3.00 [76]	3.00 [76]				1.75 [44]				5.09 [129]
NA144N90	290244	1 1/4" (1.660 [42] DIA.)	2	2.69 [68]	1.88 [48]	2.25 [57]	1.38 [35]	2.56 [65]	.50 [13]	.44 [11]	4.47 [114]	.44 [11]		3.50 [89]	3.38 [86]
NA15290	50031332				4	1.88 [48]	3.00 [76]				1.75 [44]				5.21 [132]
NA152N90	2900MN	1 1/2" (1.900 [48] DIA.)	4	2.69 [68]	2.25 [57]	2.25 [57]	1.38 [35]	2.56 [65]	.50 [13]	.44 [11]	4.47 [114]	.44 [11]		3.94 [100]	3.38 [86]
NA15490	50031333				2	2.25 [57]	3.00 [76]				1.75 [44]				5.21 [132]
NA154N90	290034	2 (2.375 [60] DIA.)	2	2.69 [68]	3.00 [76]	3.00 [76]	1.75 [44]	3.44 [87]	.56 [14]	.56 [14]	5.72 [145]	.62 [16]		4.62 [118]	4.13 [105]
NA162N90	290056				4	2.25 [57]	2.50 [64]				2.50 [64]	1.62 [41]			
NA16490	50031334	3" (3.500 [89] DIA.)	4	3.25 [83]	2.50 [64]	3.00 [76]	1.75 [44]	4.19 [106]	.62 [16]	.44 [11]	5.84 [148]	.62 [16]		6.19 [157]	4.31 [109]
NA164N90	290040				2	2.50 [64]	3.00 [76]				1.75 [44]				5.84 [148]
NA172N90	290163	3 1/2" (4.000 [102] DIA.)	4	3.25 [83]	2.50 [64]	3.00 [76]	1.75 [44]	4.31 [109]	.81 [21]	.44 [11]	5.86 [149]	.62 [16]		6.81 [173]	4.44 [112]
NA17490	50031335				2	2.62 [67]	2.62 [67]				1.50 [38]				5.86 [149]
NA174N90	290SXU	4" (4.500 [114] DIA.)	4	3.25 [83]	3.00 [76]	3.00 [76]	1.75 [44]	4.31 [109]	.81 [21]	.44 [11]	5.47 [139]	.56 [15]		7.44 [189]	4.06 [103]
NA18290	50031336				2	3.00 [76]	3.00 [76]				1.75 [44]				5.47 [139]
NA182N90	290288	4" (4.500 [114] DIA.)	4	3.25 [83]	2.75 [70]	3.50 [89]	2.00 [51]	4.19 [106]	.69 [18]	.50 [13]	6.69 [170]	.75 [19]		5.25 [133]	5.28 [134]
NA18490	50031337				2	2.75 [70]	3.00 [76]				1.75 [44]				6.69 [170]
NA184N90	290130	3 1/2" (4.000 [102] DIA.)	4	3.25 [83]	3.12 [80]	3.12 [79]	1.50 [38]	4.19 [106]	.69 [18]	.50 [13]	6.19 [157]	.62 [16]		5.06 [129]	4.91 [125]
NA19290	50031338				2	3.12 [80]	3.00 [76]				1.75 [44]				6.19 [157]
NA19490	50031339	3" (3.500 [89] DIA.)	4	3.25 [83]	3.00 [76]	4.00 [102]	2.38 [60]	4.19 [106]	.62 [16]	.56 [14]	6.47 [164]	.81 [21]		6.19 [157]	6.06 [154]
NA194N90	290070				2	3.00 [76]	3.75 [95]				2.00 [51]				6.47 [164]
NA20490	50031340	3 1/2" (4.000 [102] DIA.)	4	3.25 [83]	3.75 [95]	3.00 [76]	1.75 [44]	4.31 [109]	.81 [21]	.69 [18]	7.22 [183]	.88 [22]		6.81 [173]	5.81 [148]
NA204N90	27014017				2	3.75 [95]	3.00 [76]				1.75 [44]				7.22 [183]
NA21490	50031341	4" (4.500 [114] DIA.)	4	3.25 [83]	4.38 [111]	4.38 [111]	2.50 [64]	4.31 [109]	.81 [21]	.81 [21]	8.62 [219]	.94 [24]		7.44 [189]	6.78 [172]
NA214N90	290386				2	4.38 [111]	3.00 [76]				1.75 [44]				8.62 [219]
NA22490	50031342	4" (4.500 [114] DIA.)	4	3.25 [83]	4.75 [121]	4.75 [121]	2.75 [70]	4.31 [109]	.81 [21]	.81 [21]	9.28 [236]	1.00 [25]		7.44 [189]	7.44 [189]
NA224N90	50031343				2	4.75 [121]	3.00 [76]				1.75 [44]				9.28 [236]
NA224N90	50031343	4" (4.500 [114] DIA.)	4	3.25 [83]	5.25 [133]	5.25 [133]	3.12 [79]	4.31 [109]	.81 [21]	.81 [21]	10.06 [156]	1.06 [27]		7.44 [189]	8.22 [209]
NA224N90	50031343				2	5.25 [133]	3.00 [76]				1.75 [44]				10.06 [156]

REV	DATE	DESCRIPTION	ECO	BY	C'HK.
B	10/04/2013	TO INCLUDE PLATING OPTIONS ON DRAWING SD021664-01	33534	NPR	NJS



NOTES:

1 MATERIAL:
CAST COPPER ALLOY

2 FINISH:
BRIGHT DIPPED

3 ACCOMMODATES:
SEE TABLE

4 NOMINAL BOLT INSTALLATION TORQUE:
1/2" SILICON BRONZE HARDWARE - 480 LB-IN [55 Nm]
3/8" SILICON BRONZE HARDWARE - 240 LB-IN [30 Nm]
5/8" SILICON BRONZE HARDWARE - 660 LB-IN [75 Nm]

5 DIMENSIONS IN BRACKETS [] DENOTES METRIC UNITS [SI UNITS] AND ARE ROUNDED TO THE NEAREST WHOLE NUMBER. UNLESS OTHERWISE SPECIFIED THESE UNITS SHALL BE USED FOR REFERENCE ONLY.

6 MARKING:
BURNDY
---(CATALOG NUMBER)
---(ACCOMMODATES)

7 PLATING OPTIONS: CONTACT BURNDY FOR OTHER AVAILABLE PLATING OPTIONS. ADD SUFFIX TN FOR TIN PLATED BODY AND CAP ONLY. ADD SUFFIX W FOR TIN PLATED BODY AND CAP WITH TIN PLATED HARDWARE. ADD SUFFIX SV FOR SILVER PLATING.

TO ORDER BURNDY® PRODUCTS CALL
UNITED STATES
1-800-346-4175 (LONDONDERRY, NH)
CANADA:
1-800-361-6975 (QUEBEC)
1-800-387-6487 (ALL OTHER PROVINCES)
FOR PRODUCT INFO: <http://www.burndy.com>

90° TERMINAL FOR TUBING		DRAWING NO	REV
ITEM NO: (SEE TABLE)		SD021664-01	B
CAT. NO: NA-90 (GENERAL)			
DRAWN BY: K. MOHAMMED	8/21/2013		
CHECKER: R LAVOIE	9/20/2013		
DSN APRVL: R LAVOIE	10/9/2013		
MFG APRVL: --			
QA APRVL: J HILLMAN	10/11/2013		
MKT APRVL: B MICHAUD	10/8/2013		
PROD FAM: SUBSTATION			
PROJECT #: --	SIZE		
DOCUMENT TYPE: SALES	B		
REL LEVEL: Released			