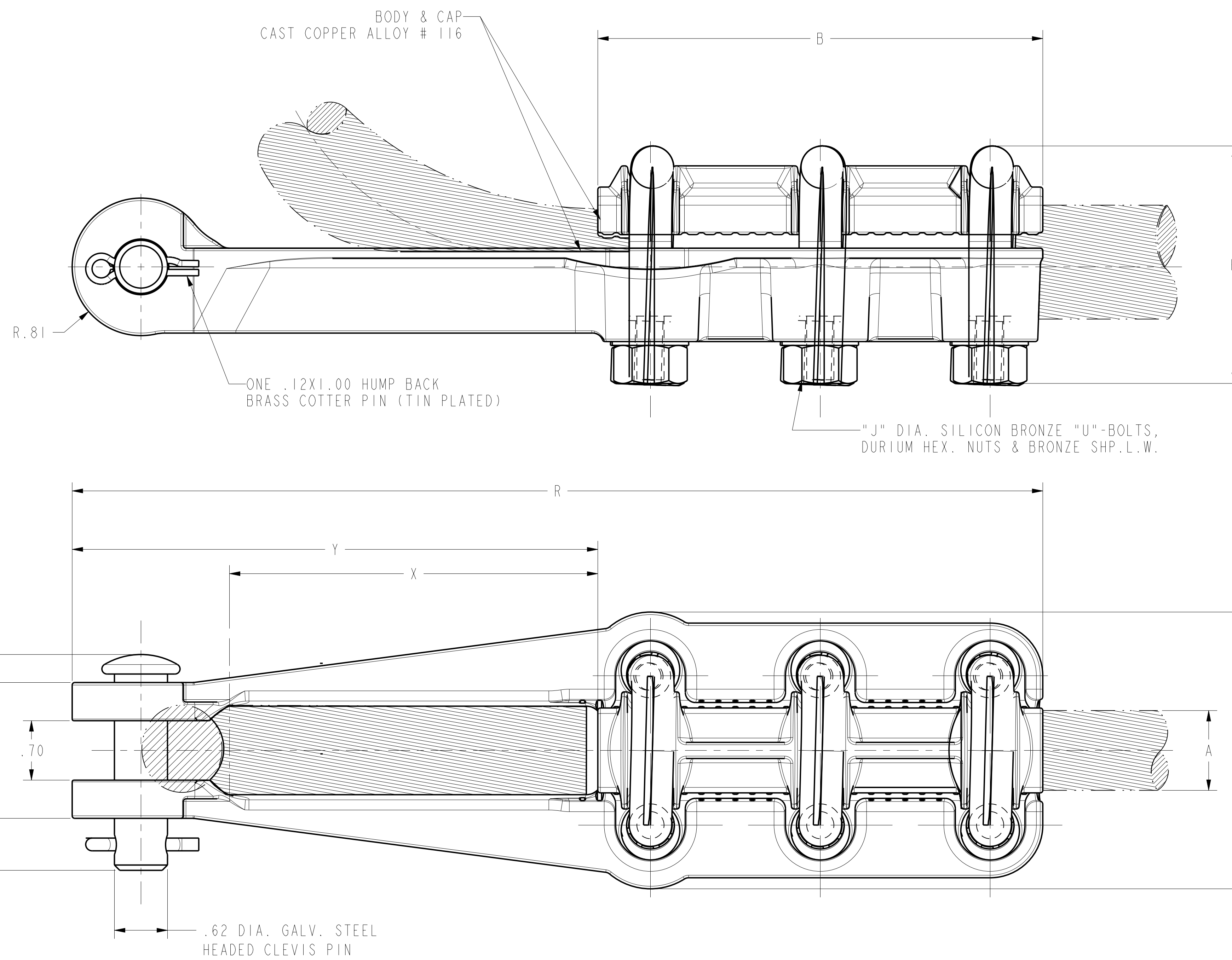


CAT. NO.	ITEM NUMBER	'A' CABLE RANGE		B	H	J	R	W	WW	X	Y	Z
		FROM	TO									
DUW28	131125	#1 STR. (.330 DIA.)	4/0 STR. (.528 DIA.)	4.56 [116]	2.50 [63.5]	.375 [9.5]	9 [229]	2.31 [59]	2.34 [59]	3.62 [92]	4.44 [113]	1.60 [41]
DUW31	131150	4/0 STR. (.528 DIA.)	350 kcmil (.681 DIA.)	4.56 [116]	1.94 [49]	.375 [9.5]	9 [229]	2.44 [62]	2.34 [59]	3.62 [92]	4.44 [113]	1.60 [41]
DUW34	131175	350 kcmil (.681 DIA.)	500 kcmil (.814 DIA.)	4.66 [118]	2.66 [67.5]	.500 [13]	9.09 [231]	2.72 [69]	2.34 [59]	3.62 [92]	4.44 [113]	1.60 [41]
DUW44	131225	500 kcmil (.814 DIA.)	1000 kcmil (1.152 DIA.)	5.25 [133]	2.81 [71]	.500 [13]	10.62 [270]	3.22 [82]	2.34 [59]	4.56 [116]	5.38 [137]	1.60 [41]
DUW46	131017	1000 kcmil (1.152 DIA.)	1500 kcmil (1.412 DIA.)	5.56 [141]	3.66 [93]	.625 [16]	10.78 [274]	3.91 [99]	2.67 [68]	4.41 [112]	5.22 [132.5]	2.04 [52]
DUW48	001512	1500 kcmil (1.412 DIA.)	2000 kcmil (1.631 DIA.)	5.56 [141]	3.72 [94.5]	.625 [16]	10.78 [274]	4.14 [105]	2.67 [68]	4.41 [112]	5.22 [132.5]	2.04 [52]

REV	DATE	DESCRIPTION	ECO	BY	C'H'K.
B	2021-02-23 23:00:00 EST	DRAWING RELEASED	210224005308	MM	NJS



NOTES:

- MATERIAL: AS NOTED
- ACCOMMODATES: SEE TABLE
- NOMINAL BOLT INSTALLATION TORQUE:  
 3/8" SILICON BRONZE HARDWARE - 240 LB-IN [30 Nm]  
 1/2" SILICON BRONZE HARDWARE - 480 LB-IN [55 Nm]  
 5/8" SILICON BRONZE HARDWARE - 660 LB-IN [75 Nm]
- DIMENSIONS IN BRACKETS [ ] DENOTES METRIC UNITS [SI UNITS] AND ARE ROUNDED TO THE NEAREST WHOLE NUMBER. UNLESS OTHERWISE SPECIFIED THESE UNITS SHALL BE USED FOR REFERENCE ONLY.
- FINISH: BRIGHT DIPPED

STRAIN CLAMP			
ITEM NO:	SEE TABLE		
CAT. NO:	DUW-- (SEE TABLE)		
DRAWN BY:	R KONATHALA 04/04/14		
CHECKER:	NJ SUDHAKAR 03/18/21		
DSN APPVL:	D DOBRINSKI 03/18/21		
MFG APPVL:	B MERRITT 03/18/21		
QA APPVL:	J BRODEUR 03/18/21		
MKT APPVL:	M THERRIEN 03/19/21		
PROD FAM:	--	DRAWING NO	SD022054-01
PROJECT #:	--	SIZE	D
DOCUMENT TYPE:	Sales		
REL LEVEL:	Released		
		SHEET 1 OF 1	B



REV: CREO\_05/20/21