

REV	DATE	DESCRIPTION	ECO	BY	C'K'.
E	12/06/2013 00:00:00 AM	DIMENSIONS WAS CORRECTED IN TABLE	34200	SAV	MB

BURNDY CATALOG NUMBER	FIG. NO.	STR. CU CABLE SIZE	STUD SIZE	C ±.020	D MIN.	L MAX.	N ±.010	O.D. ±.015	T ±.015	B MIN.	INSTALLATION TOOLING			
											NON-HYDRAULIC		PNEUMATIC	HYDRAULIC
											NON-RATCHET	RATCHET		
YAVI8HL33	1	22-16	#6	.250	.309	.815	.120	.210	.040	.247	Y10D, Y10-22	Y10MRPA WITH J1022NC5 DIE MR8G98, MR890 Y8MRBI, MR20	Y6NCB OR Y6NCP WITH J1022NC5 DIE	--
YAVI8HI			#8	.313	.403	.909	.156	.210	.030	.247				
YAVI8H			#10	.313	.403	.909	.156	.210	.030	.247				
YAVI4HL33	1	20-14	#6	.250	.309	.856	.125	.240	.050	.247	Y10D, Y10-22	Y10MRPA WITH J1022NC5 DIE MR8G98, MR890 Y8MRBI, MR20	Y6NCB OR Y6NCP WITH J1022NC5 DIE	--
YAVI4HI			#8	.312	.403	.950	.150	.240	.040	.247				
YAVI4H			#10	.312	.403	.950	.150	.240	.040	.247				
YAVI4H2	2	12-10	1/4	.412	.575	1.138	.250	.240	.030	.247	Y10D, Y10-22	Y10MRPA WITH J1022NC5 DIE MR8G98, MR890 Y8MRBI, MR20	Y6NCB OR Y6NCP WITH J1022NC5 DIE	--
YAVI0T11			#8	.380	.450	.971	.188	.210	.060	.402				
YAVI0			#10	.380	.450	.971	.188	.210	.060	.402				
YAVI0T3	2	8	1/4	.469	.574	1.093	.234	.210	.050	.392	MY29-11	MR4C, MR890, Y8MRBI, M8ND WITH N8CT DIE	Y6NCB OR Y6NCP WITH Y2CNC NEST AND J8CNC INDENTOR DIES	Y35, Y35BH, Y39, Y39BH, Y750, Y750BH WITH UV8L NEST AND Y34PL INDENTOR DIES Y29BH WITH DV8L NEST AND Y29PL INDENTOR DIES
YAVI0T2			5/16	.532	.606	1.126	.266	.210	.040	.392				
YAVI0T4			3/8	.558	.654	1.174	.281	.210	.040	.390				
YAV8CL	3	6	#10	.407	.483	1.150	.283	.270	.080	.405	MY28 MY29-11	MR4C	Y6NCB OR Y6NCP WITH Y2CNC NEST AND J6CNC INDENTOR DIES	Y35, Y35BH, Y39, Y39BH, Y750, Y750BH WITH UV8L NEST AND Y34PL INDENTOR DIES Y29BH WITH DV6L NEST AND Y29PL INDENTOR DIES
YAV8CL1			1/4	.455	.545	1.222	.228	.270	.070	.405				
YA6CL1			#10	.406	.480	1.266	.220	.300	.090	.515				
YAV6CL1	2	4	#10	.480	.523	1.307	.240	.310	.080	.467	MY28 MY29-11	MR4C	Y6NCB OR Y6NCP WITH Y2CNC NEST AND J6CNC INDENTOR DIES	Y35, Y35BH, Y39, Y39BH, Y750, Y750BH WITH UV8L NEST AND Y34PL INDENTOR DIES Y29BH WITH DV4L NEST AND Y29PL INDENTOR DIES
YA6CL	3		1/4	.452	.670	1.453	.312	.300	.080	.515				
YAV6CL	2		1/4	.480	.533	1.307	.240	.310	.080	.467				
YAV6CL4	2	3	5/16	.600	.646	1.430	.300	.310	.060	.467	MY28 MY29-11	MR4C	Y6NCB OR Y6NCP WITH Y2CNC NEST AND J6CNC INDENTOR DIES	Y35, Y35BH, Y39, Y39BH, Y750, Y750BH WITH UV8L NEST AND Y34PL INDENTOR DIES Y29BH WITH DV4L NEST AND Y29PL INDENTOR DIES
YA6CL4	3		3/8	.625	.838	1.621	.406	.300	.060	.515				
YAV6CL2	2		3/8	.600	.646	1.430	.300	.310	.060	.467				
YA4CL4	3	2	3/8	.577	.824	1.919	.406	.340	.080	.092	MY28 MY29-11	MR4C	Y6NCB OR Y6NCP WITH Y2CNC NEST AND J6CNC INDENTOR DIES	Y35, Y35BH, Y39, Y39BH, Y750, Y750BH WITH UV8L NEST AND Y34PL INDENTOR DIES Y29BH WITH DV4L NEST AND Y29PL INDENTOR DIES
YAV4CL2	2		3/8	.625	.638	1.131	.313	.380	.080	.467				
YAV4CL3	2		#10	.547	.522	1.368	.250	.380	.080	.467				

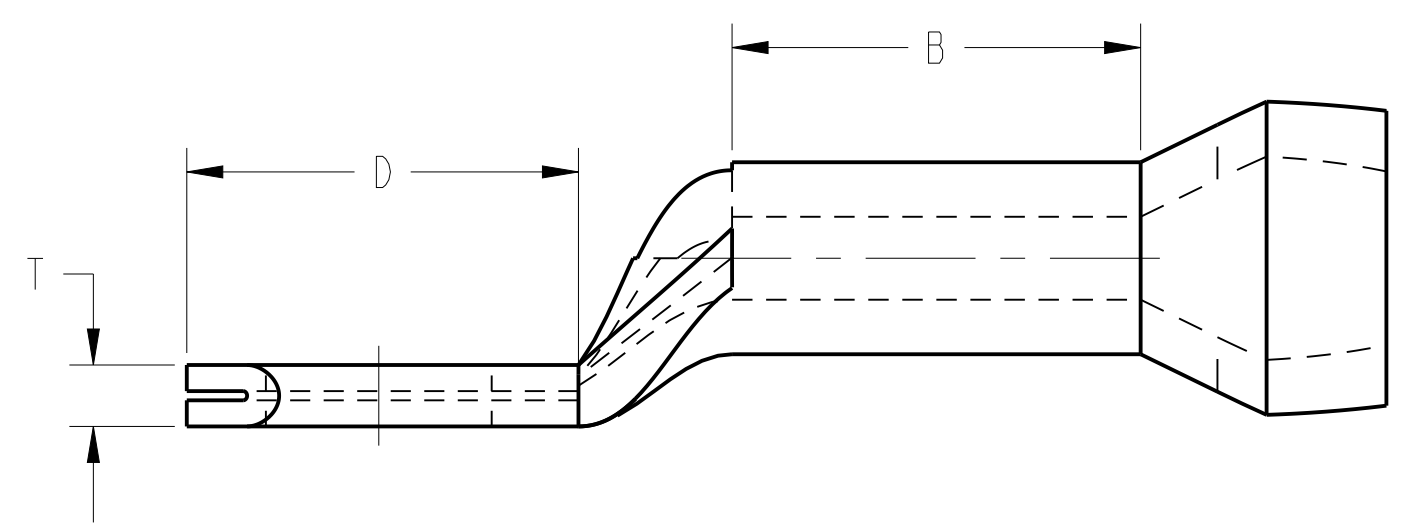
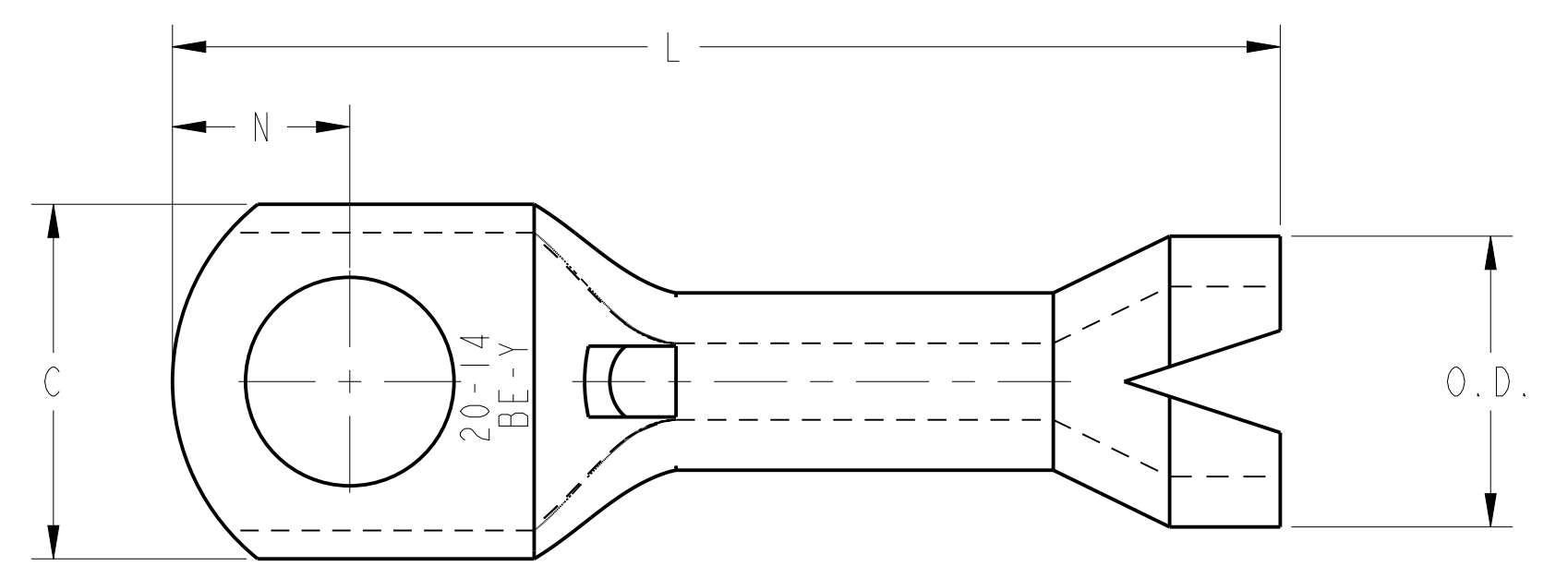


FIGURE 1

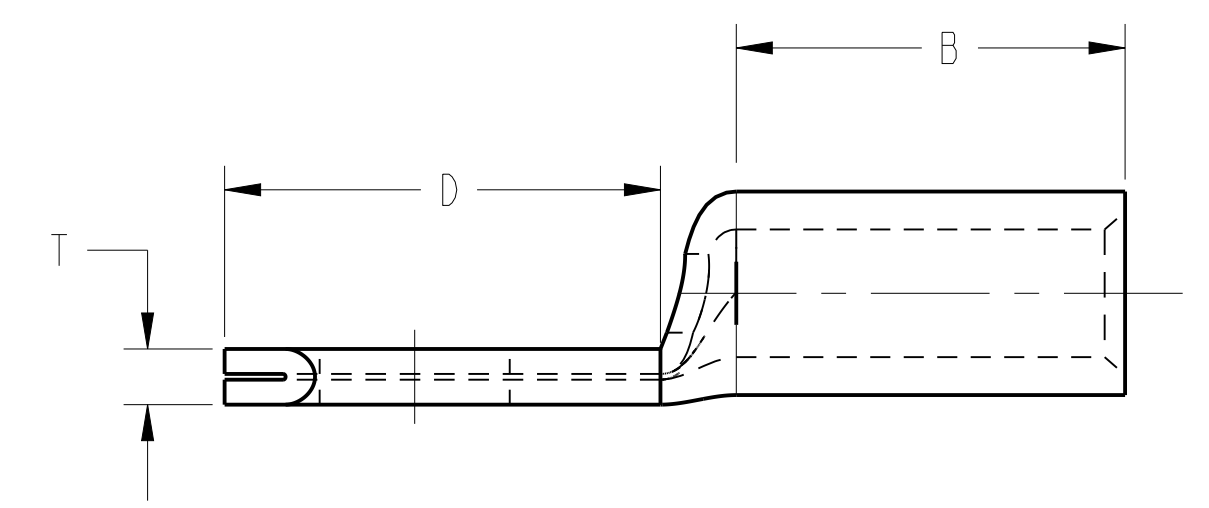
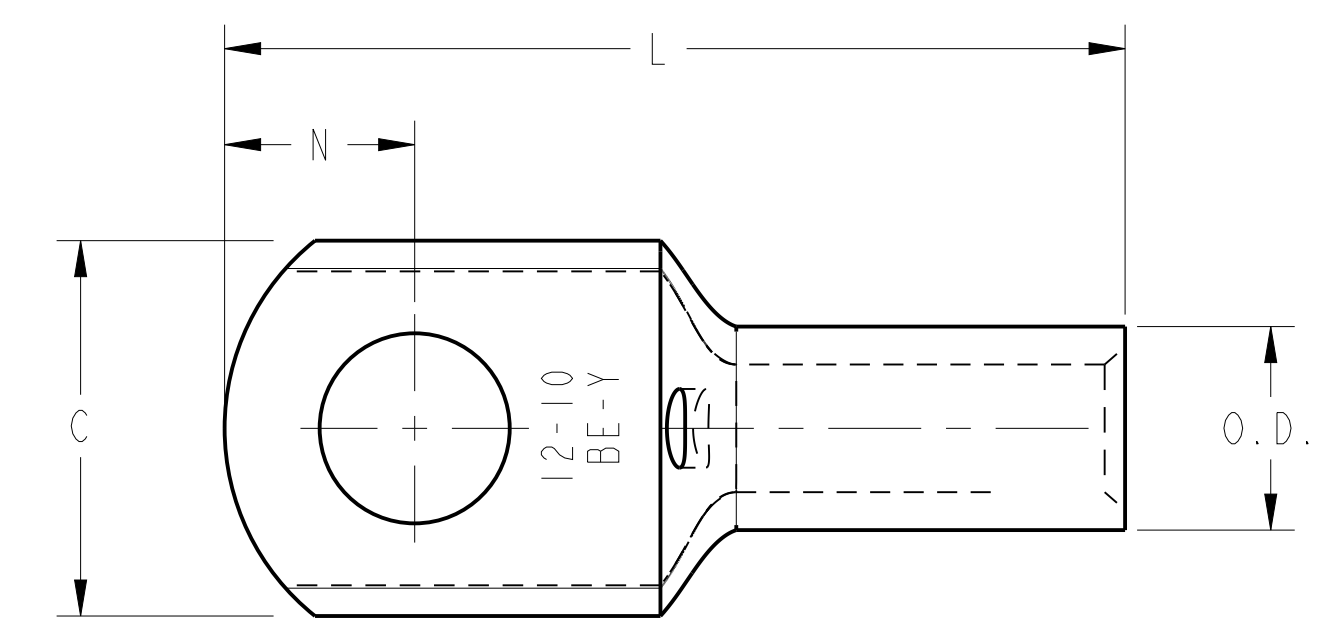


FIGURE 2

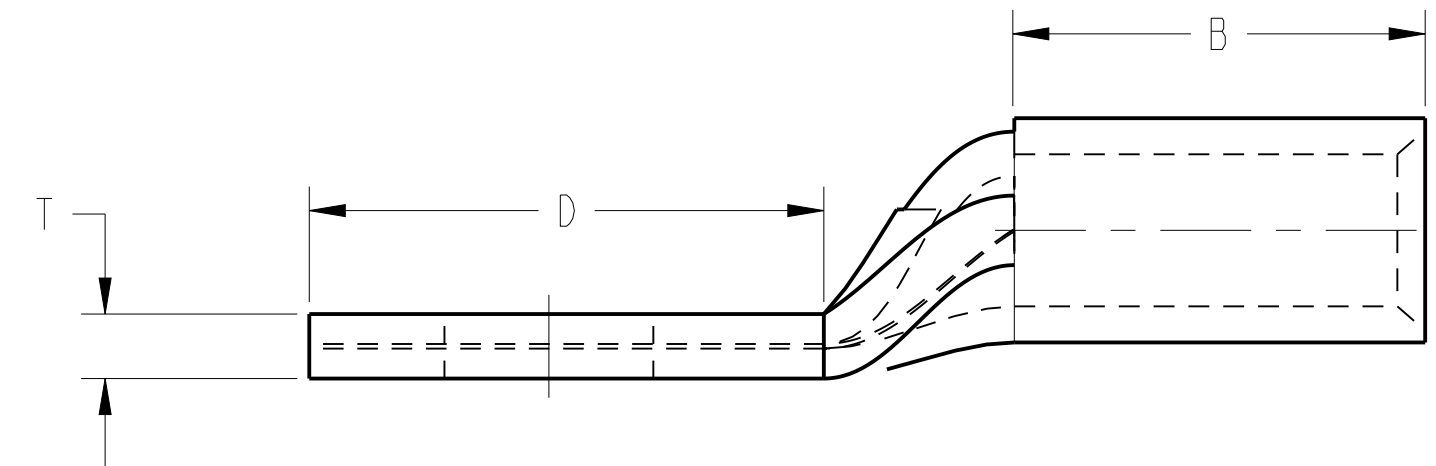
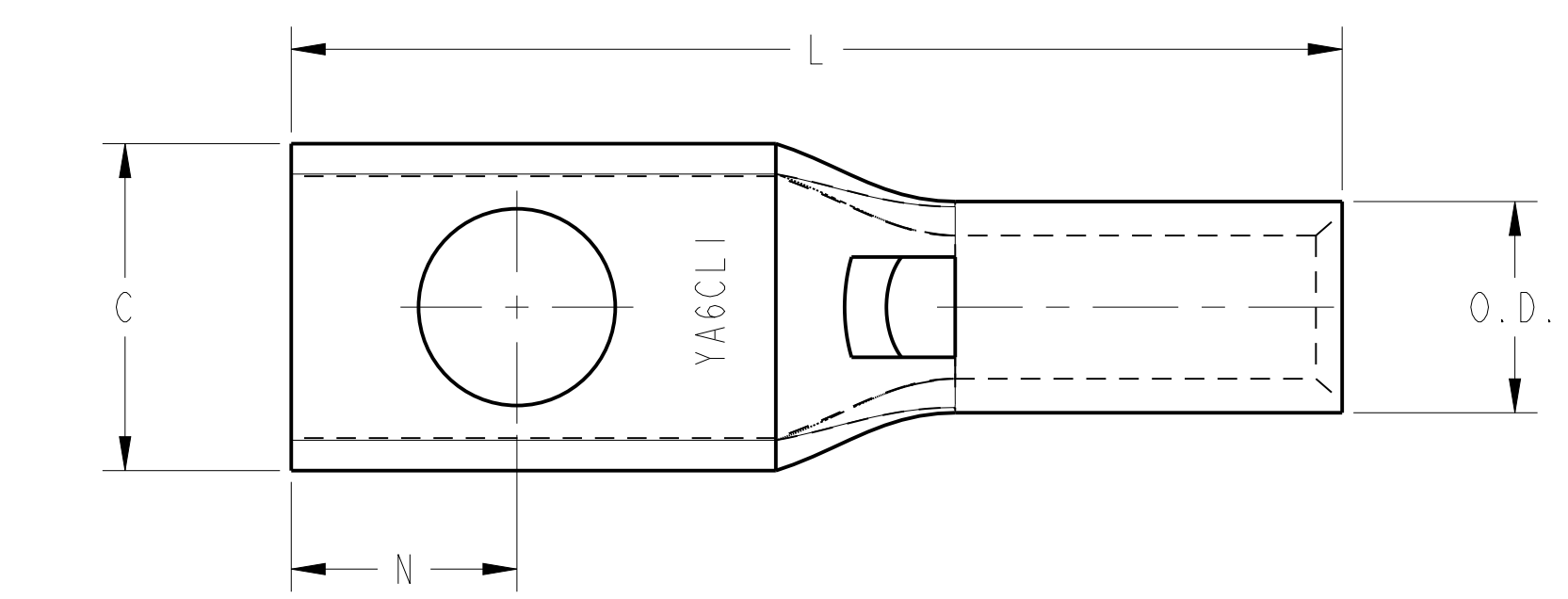


FIGURE 3

- NOTES:
- MATERIAL: COPPER TUBING.
 - FINISH: TIN PLATED.
 - SUFFIX "NK" DENOTES NICKEL PLATING (I.E. YAVI0T4NK).

TO ORDER BURNDY® PRODUCTS CALL		HYLUG™	
UNITED STATES 1-800-346-4175 (LONDONDERRY, NH)		ITEM NO: SEE TABLE	CAT. NO: YA--- (TABLE)
CANADA: 1-800-361-6975 (QUEBEC) 1-800-387-6487 (ALL OTHER PROVINCES)		DRAWN BY: P. LAPONIUS 1/20/05	CHECKER: D. BOISVERT 2/02/05
FOR PRODUCT INFO: http://www.burndy.com		DSN APPVL: D. SHIBILIA 2/02/05	MFG APPVL: --
		QA APPVL: J. BRODEUR 2/09/05	MKT APPVL: A. ZWIT 2/02/05
		PROD FAM: --	SCALE: 4.000
		PROJECT #: --	SIZE: D
		DOCUMENT TYPE: Sales	DRAWING NO: SD025110-01
		REL LEVEL: Released	REV: E
			SHEET 1 OF 1

REV: PE0200