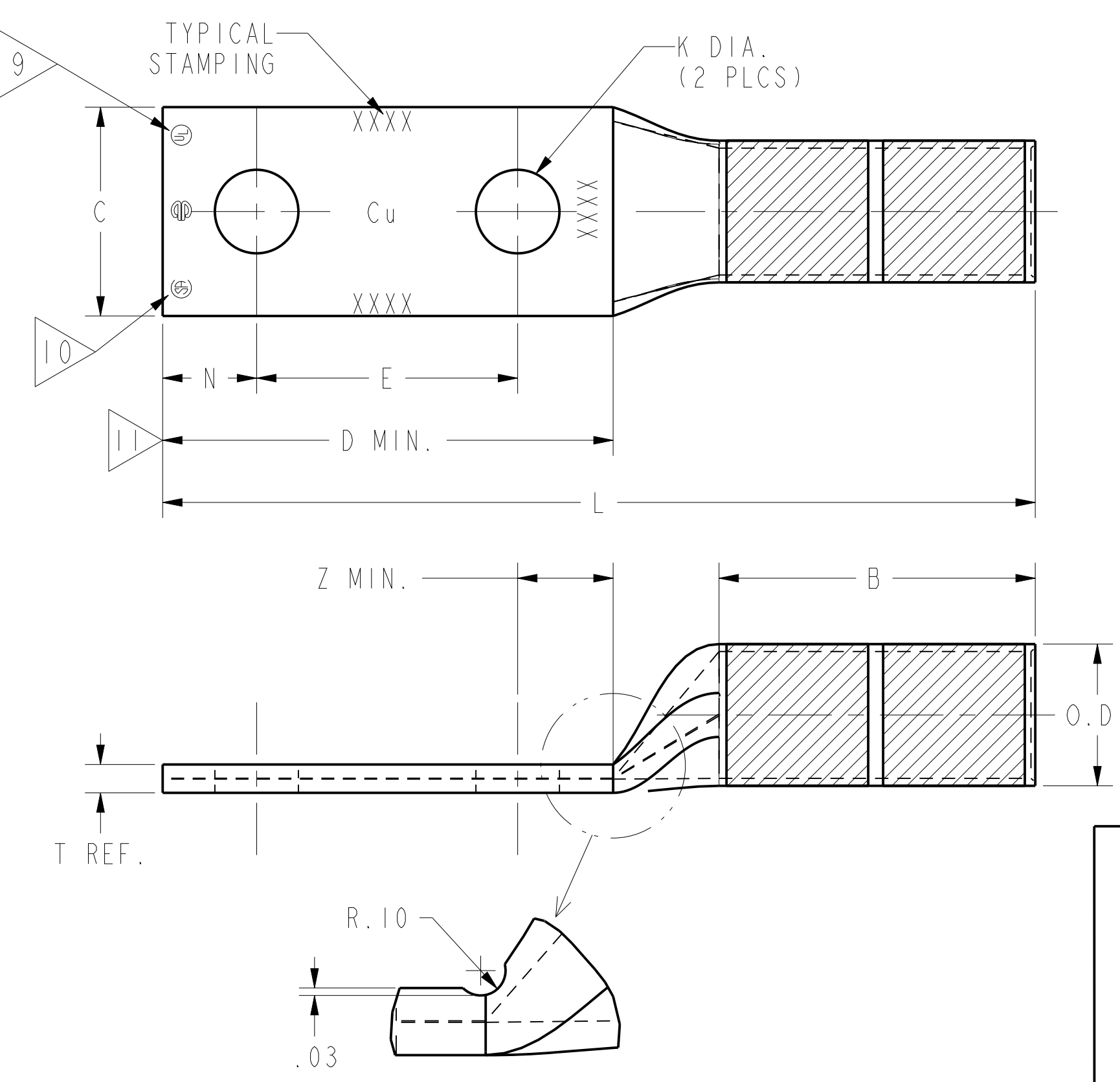


CATALOG NUMBER	STRANDED COPPER CONDUCTOR ACCOMMODATED			BOLT SIZE	METRIC BOLT SIZE	DIMENSIONS							TOLERANCE BLOCK								
	CODE (AWG)	NAVY	METRIC SIZE (CLASS 2)			B	C	E	K DIA.	L	N	O.D.	T REF.	Z MIN.	TOLERANCE BLOCK						
YA322N	400 kcmil	400	-----	1/2	M12	2.12 [54]	1.40 [36]	↑	↑	5.85 [149]	↑	.95 [24]	.19 [5]	↑	TOLERANCE BLOCK						
YA322NUNPL	400 kcmil	400	-----	1/2	M12	2.13 [54]	1.48 [38]	1.75 [44]	.56 [14]	5.93 [151]	.63 [16]	1.01 [26]	.21 [5]	.64 [16]	TOLERANCE BLOCK						
YA332N	450 kcmil	-----	-----	1/2	M12	2.25 [57]	1.55 [39]	↓	↓	6.06 [154]	↓	1.05 [27]	.22 [6]	↓	TOLERANCE BLOCK						
YA342N	500 kcmil	-----	240mm ² STR[23.1]	1/2	M12	2.63 [67]	1.65 [42]	↓	↓	6.49 [165]	↓	1.13 [29]	.25 [6]	↓	TOLERANCE BLOCK						
YA352N	550 kcmil	-----	-----	1/2	M12										TOLERANCE BLOCK						

INSTALLATION TOOLING (# CRIMPS)																		
CATALOG NO.	COLOR CODE	DIE INFORMATION			MECHANICAL				HYDRAULIC							DIELESS (# CRIMPS)	WIRE STRIP LENGTH	
		DIE INDEX	TYPE	YIMRTC	OUR840	MD6 MD7	MD6--R2 MD7-34R	PAT600 Y500	Y34A Y34B Y34BH	Y35, Y39 Y750, PAT750	Y46 PAT46	Y45	Y48B	Y60BHU				
YA322N	BLUE	19 470	BLUE DIE SET	-----	-----	-----	W32RT(4) W32VT(4)	W32VT(4)	-----	Y32RT(4) U30ART(4)	Y32RT(4) U30ART(4)	Y32RT(4) U30ART(4)	C32R(1) C30ART(1)	L32RT(1) L30ART(1)	HYDRAULIC: PAT644(1) Y644(1) PAT81KFT(3) Y81KFT(3) PAT4PC834(3) Y4PC834(3)	2-3/16"		
YA332N	GRAY	326 538	GRAY DIE SET	-----	-----	-----	W33RT(4) W33VT(4)	W33VT(4)	-----	Y33RT(4) U33RT(4)	Y33RT(4) U33RT(4)	Y33RT(4) U33RT(4)	-----	L33RT(1)	HYDRAULIC: PAT644(1) Y644(1) PAT81KFT(4) Y81KFT(4) PAT4PC834(4) Y4PC834(4)	2-3/16"		
YA322NUNPL			NEST INDENTOR	-----	-----	-----	-----	-----	B33D(2) A33D(2) Y34PR	U33D-1(2) Y34PR	U33D-1(2) Y34PR	U33D-1(2) Y34PR	C33D(2) Y48PR	-----				
YA342N	BROWN	20 299	BROWN DIE SET	-----	-----	-----	W34RT(4) W34VT(4)	W34VT(4)	-----	Y34RT(4) U31ART(2)	Y34RT(4) U31ART(2)	Y34RT(4) U31ART(2)	C34R(2) C31AR(2)	L34RT(2)	HYDRAULIC: PAT644(1) Y644(1) PAT81KFT(4) Y81KFT(4) PAT4PC834(4) Y4PC834(4)	2-5/16"		
	NEST INDENTOR	-----	-----	-----	-----	-----	B34D(1) A34D(1) Y34PR	U34D-1(2) Y34PR	U34D-1(2) Y34PR	U34D-1(2) Y34PR	U34D-1(2) Y34PR	C34D(2) Y48PR	-----					
YA352N	YELLOW	21	YELLOW DIE SET	-----	-----	-----	-----	-----	-----	Y35RT(4) U35RT(4)	Y35RT(4) U35RT(4)	Y35RT(4) U35RT(4)	-----	L35RT(2)	HYDRAULIC: PAT644(1) Y644(1) PAT81KFT(4) Y81KFT(4) PAT4PC834(4) Y4PC834(4)	2-11/16"		
	NEST INDENTOR	-----	-----	-----	-----	-----	-----	-----	-----	P35D(2) P44PR	-----	C35D(2) Y48PR	-----					

- NOTES:
- MATERIAL: COPPER TUBING
 - FINISH: TIN PLATED. FOR UNPLATED VERSION, ADD SUFFIX "BR" TO CATALOG NUMBER EX. YA322NBR.
 - CATALOG # PT6515 ADAPTOR IS REQUIRED TO USE "U" DIES IN Y45 SERIES TOOLS.
 - CATALOG # PUADP-1 ADAPTOR IS REQUIRED TO USE "U" DIES IN Y46 SERIES TOOLS.
 - Y35P3 INDENTOR ADAPTOR REQUIRED FOR Y34PR INDENTOR.
 - PERMANENT DIE IN TOOLING.
 - DIMENSIONS IN BRACKETS [] ARE IN MILLIMETERS ROUNDED OFF TO THE NEAREST MILLIMETER, UNLESS OTHERWISE NOTED, AND ARE FOR REFERENCE ONLY.
 - FOR USE BY CUSTOMERS THAT HAVE THIS HYPRESS. NO NEW Y34A HYPRESSES ARE BEING PROCESSED. Y34A USES A--D TYPE NEST DIES.
 - CONNECTORS ARE UL LISTED; UNDRILLED VERSIONS ARE NOT UL LISTED.
 - CONNECTORS ARE CSA CERTIFIED; UNDRILLED VERSIONS ARE NOT CSA CERTIFIED.
 - FOR UNDRILLED VERSIONS ADD SUFFIX "-U" TO END OF CATALOG NUMBER. FOR UNDRILLED VERSIONS, USE D MIN. = N MAX. + E MIN. + Z MIN.
 - "X", "W-RT", "W-VT", "U", & "L" DIE SETS ARE COLOR CODED. "A", "B", AND "C" DIES ARE NOT COLOR CODED. NESTS AND INDENTOR TYPE ARE NOT COLOR CODED.
 - PAT600 AND Y500 ARE HYDRAULIC TOOLS.
 - ALTERNATE TRANSITION DESIGN.
 - ADD SUFFIX "UNPL" FOR UNPLATED CONNECTORS WITH NO INK MARKINGS IN BARREL.
 - ADD SUFFIX "DT" OR "DTS" TO ORDER LUGS WITH CRIMP BARREL SEALED AIR TIGHT INSIDE THE TRANSITION.



REFERENCE :SE209513

TO ORDER BURNDY® PRODUCTS CALL
 UNITED STATES
 1-800-346-4175 (LONDONDERRY, NH)
 CANADA:
 1-800-361-6975 (QUEBEC)
 1-800-387-6487 (ALL OTHER PROVINCES)
 FOR PRODUCT INFO: <http://www.burndy.com>

HYLUG™	
ITEM NO:	N/A
CAT. NO:	YA--2N (SEE TABLE)
DRAWN BY:	J MICHAUD 11/18/94
CHECKER:	D FILLION 11/18/94
DSN APPVL:	C PALAGI 10/24/94
MFG APPVL:	--
QA APPVL:	C ACKERMAN 11/17/94
MKT APPVL:	T NELSON 11/10/94
PROD FAM:	CM&R COMPRESSION
DRAWING NO:	SD031189
PROJECT #:	--
DOCUMENT TYPE:	Sales
REL LEVEL:	Released
SCALE:	NTS
SHEET:	4 OF 10