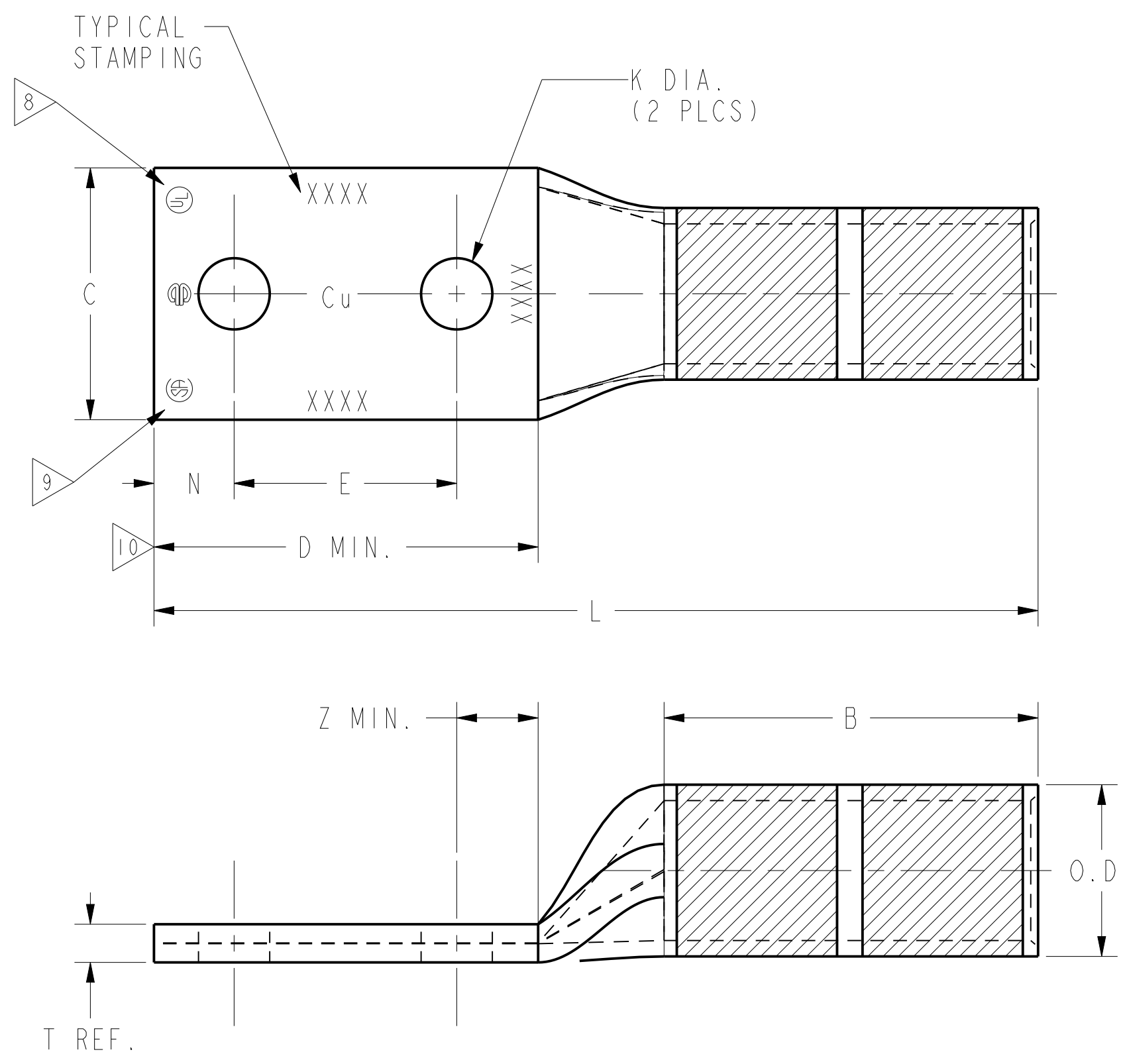


CATALOG NUMBER	STRANDED COPPER CONDUCTOR ACCOMMODATED			BOLT SIZE	METRIC BOLT SIZE	DIMENSIONS								
	CODE (AWG)	NAVY	METRIC SIZE (CLASS 2)			B	C	E	K DIA.	L	N	O.D.	T REF.	Z MIN.
YA402N	800 kcmil	----	400mm <sup>2</sup> STR [26.1]	1/2	M12	2.94 [75]	1.98 [50]	1.75 [44]	.56 [14]	6.95 [177]	.63 [16]	1.35 [34]	.30 [8]	.64 [16]
YA412N	850 kcmil	----	----	1/2	M12		2.01 [51]					1.38 [35]	.31 [8]	
YA44-2N	1000 kcmil	----	500mm <sup>2</sup> STR [28.3]	1/2	M12	3.00 [76]	2.19 [56]	1.50 [38]	.32 [8]					

REV	DATE	DESCRIPTION	ECO	BY	C.H.K.
E	2018-03-23 00:00:00 EDT	DRAWING UPDATED AS PER MARKUP	48772	YR	VS

INSTALLATION TOOLING (# CRIMPS)																
CATALOG NO.	COLOR CODE	DIE INFORMATION		MECHANICAL RATCHET					HYDRAULIC					DIELESS (# CRIMPS)	WIRE STRIP LENGTH	
		DIE INDEX	TYPE	YIMRTC	OUR840 BCT500	MD6 MD7	MD6--R2 BAT500 BCT500	MD7-34R	Y34A Y34B Y34BH	Y35, Y39 Y750, BAT35 BAT750	Y46	Y45	Y48B			Y60BHU
YA402N	ORANGE	25	ORANGE DIE SET	----	----	----	----	----	----	----	P40RT(4)	S40RT(4)	C40R(2)	L40RT(2)	HYDRAULIC: Y644(1) PAT644(1) Y81KFT(4) PAT81KFT(4) Y4PC834(4) PAT4PC834(4)	3"
			NEST	----	----	----	----	----	----	----	P40D(2)	----	C40D(2)	----		
			INDENTOR	----	----	----	----	----	----	----	P44PR	----	Y48PR	----		
YA412N	GOLD	26	GOLD DIE SET	----	----	----	----	----	----	----	----	----	----	----	3"	
			NEST	----	----	----	----	----	----	----	----	----	----	----		
			INDENTOR	----	----	----	----	----	----	----	----	----	----	----		
YA442N	WHITE	27	WHITE DIE SET	----	----	----	----	----	----	----	P44RT(4)	S44RT(4)	C44R(2)	L44RT(2)	3-1/16"	
			NEST	----	----	----	----	----	----	----	----	----	C44D(2)	----		
			INDENTOR	----	----	----	----	----	----	----	----	----	Y48PR	----		

CONNECTOR SIZE	TOLERANCES						
	B	C	E	K DIA.	L	N	O.D.
-6C THRU -25	±.06	±.04	±.02	±.02	±.09	±.03	±.01
-26 THRU -34	±.08	±.04	±.02	±.02	±.12	±.03	±.01
-35 AND UP	±.09	±.06	±.02	±.02	±.15	±.06	±.01



- NOTES:**
- MATERIAL: COPPER TUBING
  - FINISH: TIN PLATED. FOR UNPLATED VERSION, ADD SUFFIX "BR" TO CATALOG NUMBER EX. YA402NBR.
  - CATALOG # PT6515 ADAPTOR IS REQUIRED TO USE "U" DIES IN Y45 SERIES TOOLS.
  - CATALOG # PUADP-1 ADAPTOR IS REQUIRED TO USE "U" DIES IN Y46 SERIES TOOLS.
  - PERMANENT DIE IN TOOLING.
  - DIMENSIONS IN BRACKETS [ ] ARE IN MILLIMETERS ROUNDED OFF TO THE NEAREST MILLIMETER, UNLESS OTHERWISE NOTED, AND ARE FOR REFERENCE ONLY.
  - FOR USE BY CUSTOMERS THAT HAVE THIS HYPRESS™ NO NEW Y34A HYPRESS™ TOOLS ARE BEING PROCESSED. Y34A USES A--D TYPE NEST DIES.
  - CONNECTORS ARE UL LISTED; UNDRILLED VERSIONS ARE NOT UL LISTED.
  - CONNECTORS ARE CSA CERTIFIED; UNDRILLED VERSIONS ARE NOT CSA CERTIFIED.
  - FOR UNDRILLED VERSIONS ADD SUFFIX "-U" TO END OF CATALOG NUMBER. FOR UNDRILLED VERSIONS, USE D MIN. = N MAX. + E MIN. + Z MIN.
  - "X", "W-RT", "W-VT", "U", & "L" DIE SETS ARE COLOR CODED. "A", "B", AND "C" DIES ARE NOT COLOR CODED. NESTS AND INDENTOR TYPE ARE NOT COLOR CODED.
  - BAT500 AND BCT500 ARE HYDRAULIC TOOLS.
  - ADD SUFFIX "DT" OR "DTS" TO ORDER LUGS WITH CRIMP BARREL SEALED AIR TIGHT INSIDE THE TRANSITION.

REFERENCE: SE209513

TO ORDER BURNDY® PRODUCTS CALL		HYLUG™	
UNITED STATES 1-800-346-4175 (LONDONDERRY, NH)		ITEM NO: N/A	CAT. NO: YA--2N (SEE TABLE)
CANADA: 1-800-361-6975 (QUEBEC) 1-800-387-6487 (ALL OTHER PROVINCES)		DRAWN BY: J MICHAUD 11/18/94	CHECKER: D FILLION 11/18/94
FOR PRODUCT INFO: <a href="http://www.burndy.com">http://www.burndy.com</a>		DSN APPVL: C PALAGI 10/24/94	MFG APPVL: --
		QA APPVL: C ACKERMAN 11/17/94	MKT APPVL: T NELSON 11/10/94
		PROD FAM: CM&R COMPRESSION	DRAWING NO: SD031189
		PROJECT #: --	SCALE: 1:1
		DOCUMENT TYPE: Sales	REV: E
		REL LEVEL: Released	SHEET 6 OF 10

REV: PE0200