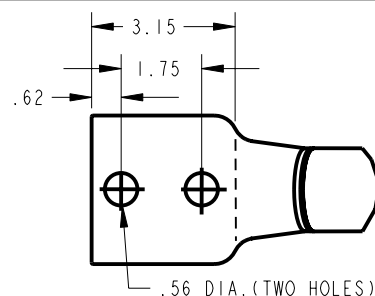


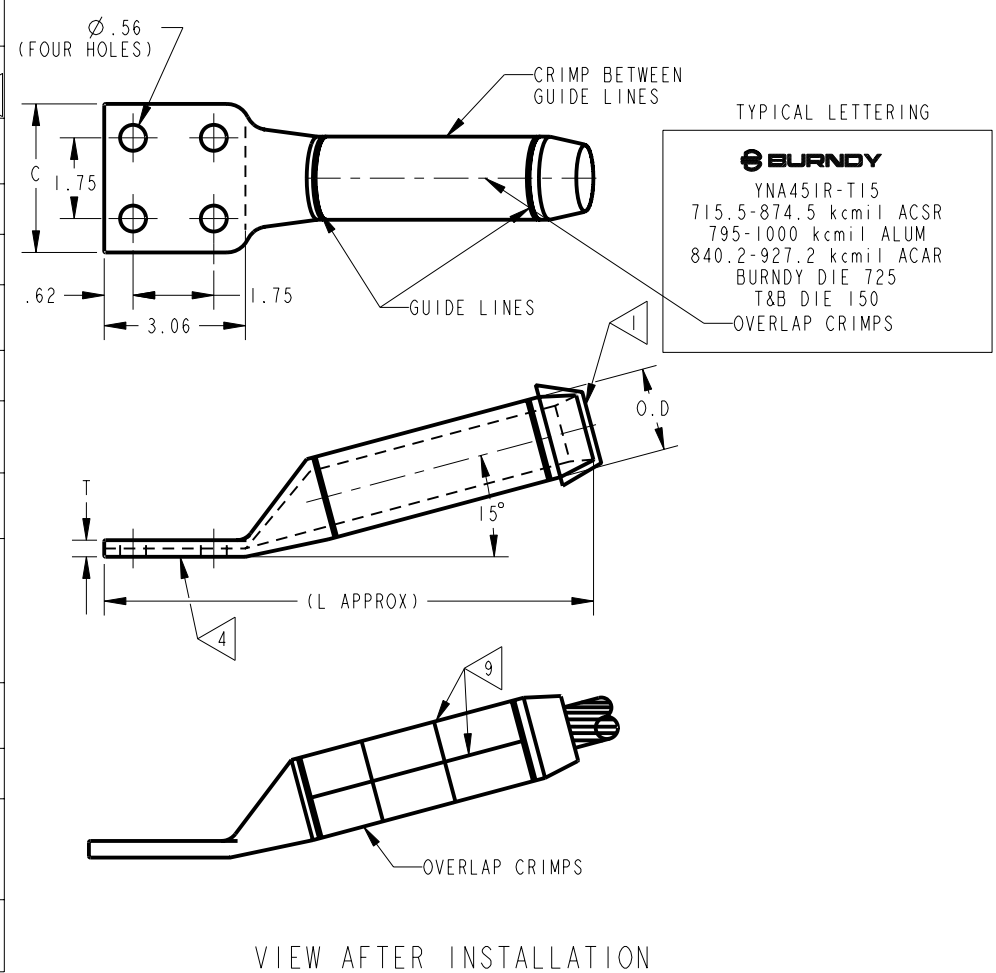
DRAWING NO.
SD64930

CONDUCTOR ACSR-ALUM-ACAR ALL STRANDING	CATALOG NO.	FIG. NO.	C	L	O.D.	T	INSTALLATION DATA OVERLAP CRIMPS						
							BURNDY HYPRESS & DIE SET			ALCOA DIE SET		T & B DIE SET	
							TOOL DIE NO.			Y60B	I50B	H2H	T&B 21940 TYPE PRESS
300-336.4 kcmil ACSR 336.4-350 kcmil ALUM. 395.1-395.2 kcmil ACAR.	YNA32R-TI5	2	1.68	9.04	1.19	.36	717			L717	M717	H717	96
397.5 kcmil ACSR 397.5-477 kcmil ALUM	YNA34R-TI5		1.78	9.21	1.30	.42	719			L719	M719	H719	106
477 kcmil ACSR 500-556.5 kcmil ALUM	YNA36R-TI5		1.96	9.63	1.41	.44	720			L720	M720	H720	115
556.5 kcmil ACSR 600-650 kcmil ALUM 634.9-653.1 kcmil ACAR	YNA39R-TI5		2.08	10.02	1.50	.50	722			L722	M722	H722	125
605-666.6 kcmil ACSR 700-800 kcmil ALUM	YNA43R-TI5	3.22		10.21	1.61	.36	724			L724	M724	H724	140
715.5-874.5 kcmil ACSR 795-1000 kcmil ALUM 840.2-927.2 kcmil ACAR	YNA451R-TI5			10.65	1.80	.45	725			L725	M725	H725	150
900-1113 kcmil ACSR 45-7 STR 1033.5-1272 kcmil ALUM 983.1-1198 kcmil ACAR	YNA49R-TI5			10.94	1.97	.52	727			L727	M727	H727	161
1113.54-1951R-1351.5 kcmil ACSR 1351.5-1510 kcmil ALUM 1277-1280 kcmil ACAR	YNA52R-TI5	1					728			L728	M728	H728	189
1431 kcmil ACSR 1590-1600 kcmil ALUM 1534-kcmil ACAR	YNA54R-TI5			14.02		2.25	.71	728			L728	M728	H728
1510.5-1590 kcmil ACSR 1700-1800 kcmil ALUM 1650 kcmil ACAR 42/19 STR.	YNA56R-TI5	3.44	13.36			.86	729			L729	M729	H729	204
1780 kcmil ACSR 2000 kcmil ALUM	YNA58R-TI5		14.08		2.50	.80							212, 214
2032.1-2034.5 kcmil ACSR	YNA585R-TI5		13.81			.75	735			L735	M735	H735	214
2156-2167kcmil ACSR 2250-2300 kcmil	YNA59R-TI5	3.57	13.75			.64							
2300 kcmil ACSR 2500 kcmil ALUM 2267-2500 kcmil ACAR	YNA594R-TI5	8	3.70	13.50	2.60	.68	740			L740	M740	H740	-----

- NOTES:
- 1 BARRELS PRE-FILLED WITH PENETROX & SEALED.
 - 2 THE DIES LISTED ARE MANUFACTURED BY BURNDY CORP. FOR USE IN ALCOA H2H&I50B PRESSES.
 - 3 THE EQUIVALENT T&B DIE INDEXES ARE LISTED FOR YOUR CONVENIENCE.
 - 4 TONGUE COATED WITH AN OXIDE RETARDANT.
 - 5 TO SPECIFY HYLUG INCLUDING HARDWARE: ADD SUFFIX H TO RESPECTIVE CAT.NO eg.YNA451RTI5H.
 - 6.) THE 15° ANGLE PAD HYLUGS WHEN COMBINED WITH THE 15° ANGLE PAD DEAD ENDS PER SD63948 ALLOW TAPS TO BE MADE OF ZERO OR 30° ORIENTATION.
 - 7.) RECOMMENDED TORQUE:
1/2" DIA. ALUM.BOLTS-300 IN-LB.
 - 8 MODEL 100A ALCOA COMPRESSOR CAN BE USED WITH MH814 DIE SET.
 - 9 FLASH FORMED DURING CRIMPING SHOULD BE REMOVED BY FILING & SHARP EDGES ROUNDED OFF. THE BARREL PORTION OF THIS CONNECTOR WILL OPERATE QUIETER THAN THE CONDUCTOR AT EXTRA HIGH VOLTAGES.
 10. CONNECTOR IS INDIVIDUALLY PACKAGED & SEALED IN POLYTUBE.



REV	DATE	DESCRIPTION	ECO	BY	C'H'K.
A	6/2/2006 1:39:00 PM	REMOVE STAMPING ON TONGUE; ADD STAMPING ON BARREL	12996	PY	PR



INSTALLATION INSTRUCTION ON DWG. SD64890.

SUPERSEDES SD64930-6
SC69346-0

MATERIAL:
ALUM TUBE.

REFERENCE:
SD64927 FOR
LOW VOLTAGE DESIGN.

STRAIGHT DESIGN SEC
SD58036

TO ORDER BURNDY PRODUCTS CALL 1-800-346-4175 MANCHESTER, NH 03109, USA FOR PRODUCT INFO = http://www.fciconnect.com	
HYLUG ACSR-AAC-ACAR.EHV > 230 KV	
ITEM NO: 10056172	
CAT. NO: YNA-R-TI5(TABLE)	5
DRAWN BY: S.D.C.	4-27-71
CHECKER: J.P.S.	5-12-71
DSN APPVL: --	5-14-71
MFG APPVL: --	--
QA APPVL: --	--
MKT APPVL: --	--
PROD FAM: --	SCALE: 0.500
PROJECT #: --	DRAWING NO
DOCUMENT TYPE: Sales	SD64930
REL LEVEL: C	SHEET 1 OF 1
	REV
	A

REV: PE0200