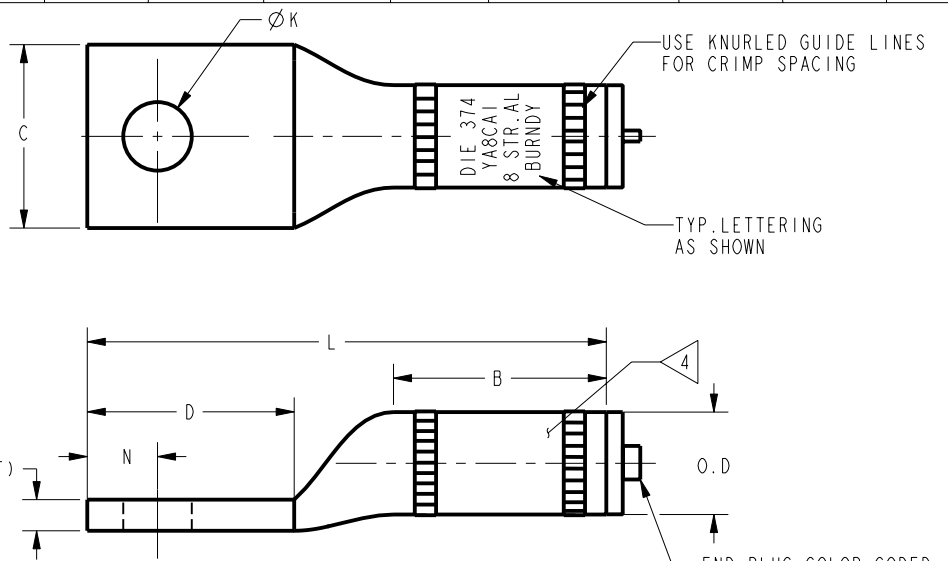


DRAWING NO.
SD073935

CATALOG NUMBER	CONDUCTOR SIZE		CONNECTOR DIMENSIONS-LINEAR MEASURE IN, [mm]										INFORMATION
	ALUMINUM	COPPER	STUD SIZE	NO. OF HOLES	B	C	D	Ø K	L	N	O.D	(T)	
YA8CA1	8 AWG- (8.4mm ²) CLASS B CONCENTRIC COMPACT SIW	8 AWG- (8.4mm ²) CLASS B,C CONCENTRIC COMPACT	10	1	.62	.53	.60	.20	1.50	.20	.30	.09	TIN
[16]					[13]	[15]	[5]	[38]	[5]	[8]	[2]	NONE	
YA8CA2			1/4		.62	.53	.75	.28	1.65	.25	.09	TIN	
YA8CA3					[16]	[13]	[19]	[7]	[42]	[6]	[2]	NONE	
YA8CA4													

REV	DATE	DESCRIPTION	ECO	BY	C'H'K.
BC	2020-12-15 23:00:00 EST	NOTE ADDED IN SHEET #14, 15 AND 16	201211003133	DD	MA

COLOR CODE	BURNDY® INSTALLATION TOOLING (#CRIMPS)										DIELESS (#CRIMPS)		STRIP LENGTH
	DIE INFORMATION		MECHANICAL		HYDRAULIC						MECHANICAL	HYDRAULIC	
DIE INDEX	TYPE	OUR840	MD6	Y34A	Y35, Y39	Y46	Y45	Y48BH	Y60				
BLUE	BLUE DIE SET	X8CART (2)	X8CART (2) W374 (1)	--	U8CABT (1)	U8CABT (1)	U8CABT (1)	--	--	MRC840AL (1) MY29-3 (1)	Y81KFT (1) PAT81KFT (1)	3/4"	
	NEST INDENTOR	--	--	--	--	--	--	--	--				



- NOTES:
1. ALL HYLUGS™ ACCOMMODATE U.S. STANDARD WASHERS.
 2. REMOVE ALL EXCESS PENETROX™ FROM CONNECTOR AND ADJACENT CONDUCTOR PRIOR TO TAPING.
 3. UL LISTED AND CSA CERTIFIED WIRE CONNECTORS. RATED 75 C (AL7CU) FOR USE WITH COPPER OR ALUMINUM CONDUCTOR. APPROVAL APPLY TO TIN PLATED CONNECTORS ONLY.
 4. CONNECTOR BARRELS PREFILLED WITH PENETROX™
 5. DIMENSIONS IN BRACKETS [] ARE IN MILLIMETERS ROUNDED OFF TO THE NEAREST MILLIMETER, UNLESS OTHERWISE NOTED, AND ARE FOR REFERENCE ONLY.
 6. ADD SUFFIX "DT" TO ORDER LUGS WITH CRIMP BARREL SEALED AIR TIGHT INSIDE THE TRANSITION.
 7. CATALOG #PT6515 ADAPTOR IS REQUIRED TO USE "U" DIES IN Y45 SERIES TOOLS.
 8. CATALOG #PUADP-1 ADAPTOR IS REQUIRED TO USE "U" DIES IN Y46 SERIES TOOLS.
 9. Y35P3 INDENTOR ADAPTOR REQUIRED FOR "Y34PR" TYPE INDENTORS.
 10. FOR USE BY CUSTOMERS THAT HAVE THIS HYPRESS™. NO NEW HYPRESSES™ ARE BEING PROCESSED.
 11. ADD SUFFIX "U" TO ORDER LUGS WITH UNDRILLED TONGUE.

UNINSULATED COMPRESSION TERMINAL
MATERIAL: ALUMINUM TUBE

TO ORDER BURNDY® PRODUCTS CALL		HYLUG™	
UNITED STATES: 1-800-346-4175 (LONDONDERRY, NH)		ITEM NO: NA	
CANADA: 1-800-361-6975 (QUEBEC) 1-800-387-6487 (ALL OTHER PROVINCES)		CAT. NO: YA8CA-(SEE TABLE)	
FOR PRODUCT INFO: http://www.burndy.com		DRAWN BY: E.S.K 7/19/72	
		CHECKER: S.F.P 8/01/72	
		DSN APPVL: R.B 8/02/72	
		MFG APPVL: --	
		QA APPVL: D.VARIO 6/19/95	
		MKT APPVL: P.WERTHMAN 6/19/95	
		SCALE: 2:1	
		PROD FAM: CM&R COMPRESSION	
		DRAWING NO: SD073935	
		REV: BC	
		PROJECT #: --	
		SIZE: C	
		DOCUMENT TYPE: Sales	
		REL LEVEL: Released	
		SHEET 1 OF 24	

REV: PE0200

DRAWING NO.
SD073935

CATALOG NUMBER	CONDUCTOR SIZE		CONNECTOR DIMENSIONS-LINEAR MEASURE IN, [mm]										INFORMATION	BARREL LETTERING INFORMATION
	ALUMINUM	COPPER	STUD SIZE	NO. OF HOLES	B	C	D	Ø K	L	N	O.D	(T)		
YA6CA1	6 AWG (13.3mm ²)	6 AWG (13.3mm ²)	1/4	1	.75 [19]	.47 [12]	.75 [19]	.28 [7]	1.84 [47]	.33 [8]	.34 [9]	.14 [4]	TIN	FIG. 2
YA6CA2	CLASS B CONCENTRIC COMPRESSED	CLASS B,C CONCENTRIC COMPRESSED	3/8		.75 [19]	.65 [17]	1.19 [30]	.44 [11]	2.28 [58]	.44 [11]		.09 [2]	NONE	FIG. 1
YA6CA3	CLASS B CONCENTRIC COMPRESSED	CLASS B,C CONCENTRIC COMPRESSED	3/8	1	.75 [19]	.65 [17]	1.19 [30]	.44 [11]	2.28 [58]	.44 [11]	.34 [9]	.14 [4]	TIN	FIG. 2
YA6CA4	COMPACT SIW	COMPACT	3/8		.75 [19]	.65 [17]	1.19 [30]	.44 [11]	2.28 [58]	.44 [11]		.09 [2]	NONE	FIG. 1

REV	DATE	DESCRIPTION	ECO	BY	C'H'K.
BC	2020-12-15 23:00:00 EST	NOTE ADDED IN SHEET #14, 15 AND 16	201211003133	DD	MA

COLOR CODE	BURNDY® INSTALLATION TOOLING (#CRIMPS)										DIELESS (#CRIMPS)		STRIP LENGTH
	DIE INFORMATION		MECHANICAL		HYDRAULIC						MECHANICAL	HYDRAULIC	
	DIE INDEX	TYPE	OUR840	MD6	Y34A Y34B	Y35, Y39 Y750, PAT750	Y46	Y45	Y48BH	Y60			
GRAY	346 161	GRAY DIE SET	X6CART (2) X161 (2)	X6CART (2) W161 (1)	A6CAB (1)	U6CABT (1) U161 (1)	U6CABT (1) U161 (1)	U6CABT (1) U161 (1)	--	--	MRC840AL (1) MY29-3 (1)	Y81KFT (1) PAT81KFT (1) Y644 (1) PAT644 (1)	7/8"
	346	NEST INDENTOR	--	--	A4CD(1) B1CD(1) Y34PA	--	--	--	--	--			

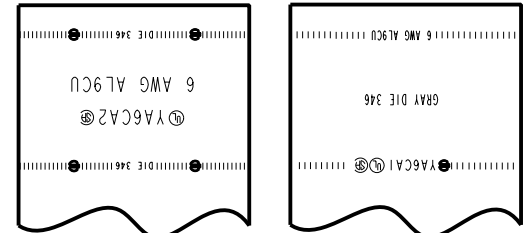
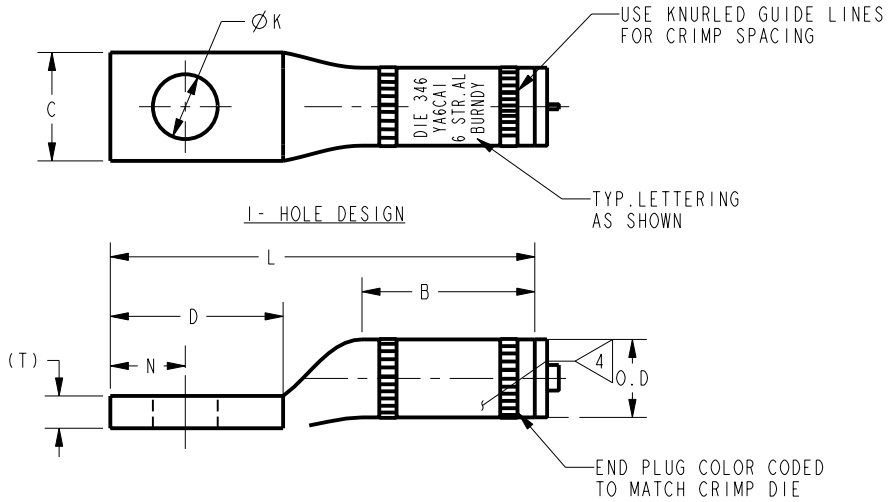


FIG. 1
FIG. 2
BARREL LETTERING VIEW

- NOTES:
- ALL HYLUGS™ ACCOMMODATE U.S. STANDARD WASHERS
 - REMOVE ALL EXCESS PENETROX™ FROM CONNECTOR AND ADJACENT CONDUCTOR PRIOR TO TAPING.
 - UL LISTED AND CSA CERTIFIED WIRE CONNECTORS. RATED 90 C (AL9CU) FOR USE WITH COPPER OR ALUMINUM CONDUCTOR. APPROVAL APPLY TO TIN PLATED CONNECTORS ONLY.
 - CONNECTOR BARRELS PREFILLED WITH PENETROX™
 - DIMENSIONS IN BRACKETS [] ARE IN MILLIMETERS ROUNDED OFF TO THE NEAREST MILLIMETER, UNLESS OTHERWISE NOTED, AND ARE FOR REFERENCE ONLY.
 - ADD SUFFIX "DT" TO ORDER LUGS WITH CRIMP BARREL SEALED AIR TIGHT INSIDE THE TRANSITION.
 - CATALOG #PT6515 ADAPTOR IS REQUIRED TO USE "U" DIES IN Y45 SERIES TOOLS.
 - CATALOG #PUADP-1 ADAPTOR IS REQUIRED TO USE "U" DIES IN Y46 SERIES TOOLS.
 - Y35P3 INDENTOR ADAPTOR REQUIRED FOR "Y34PR" TYPE INDENTORS.
 - FOR USE BY CUSTOMERS THAT HAVE THIS HYPRESS™. NO NEW HYPRESSES™ ARE BEING PROCESSED.
 - ADD SUFFIX "U" TO ORDER LUGS WITH UNDRILLED TONGUE.
 - ENLARGED BARREL MARKING VIEW.

UNINSULATED COMPRESSION TERMINAL
MATERIAL: ALUMINUM TUBE

<p>TO ORDER BURNDY® PRODUCTS CALL</p> <p>UNITED STATES: 1-800-346-4175 (LONDONDERRY, NH)</p> <p>CANADA: 1-800-361-6975 (QUEBEC) 1-800-387-6487 (ALL OTHER PROVINCES)</p> <p>FOR PRODUCT INFO: http://www.burndy.com</p>	HYLUG™	
	ITEM NO: NA	
	CAT. NO: YA6CA-(SEE TABLE)	
	DRAWN BY: E.S.K	7/19/72
	CHECKER: S.F.P	8/01/72
	DSN APPVL: R.B	8/02/72
	MFG APPVL: --	--
	QA APPVL: D.VARIO	6/19/95
	MKT APPVL: P.WERTHMAN	6/19/95
	SCALE: 2:1	
PROD FAM: CM&R COMPRESSION	DRAWING NO	REV
PROJECT #: --	SIZE	
DOCUMENT TYPE: Sales	SD073935	BC
REL LEVEL: Released	C	SHEET 2 OF 24

REV: PE0200

DRAWING NO.
SD073935

CATALOG NUMBER	CONDUCTOR SIZE		CONNECTOR DIMENSIONS-LINEAR MEASURE IN, [mm]											INFORMATION	BARREL LETTERING INFORMATION
	ALUMINUM	COPPER	STUD SIZE	NO. OF HOLES	B	C	D	E	Ø K	L	N	O.D.	(T)		
YA4CA1	4 AWG- (21.2mm ²) CLASS B CONCENTRIC COMPRESSED S1W	4 AWG- (21.2mm ²) CLASS B,C CONCENTRIC COMPRESSED COMPACT	1/4	1	.88 [22]	.47 [12]	.75 [19]	--	.28 [7]	2.13 [54]	.33 [8]	.43 [11]	.18 [5]	TIN	FIG. 2
YA4CA2			1/4		.88 [22]	.47 [12]	.75 [19]	--	.28 [7]	2.13 [54]	.33 [8]		NONE	FIG. 1	
YA4CA3			5/16	.88 [22]	.80 [20]	.87 [22]	--	.38 [10]	2.25 [57]	.41 [10]	.12 [3]		TIN	FIG. 2	
YA4CA4			5/16	.88 [22]	.80 [20]	.87 [22]	--	.38 [10]	2.25 [57]	.41 [10]	NONE		FIG. 1		
YA4CA5			--	.88 [22]	.80 [20]	.75 [19]	--	.25 [6]	2.13 [54]	.33 [8]	.12 [3]		TIN	FIG. 1	
YA4CA6			3/8	.88 [22]	.80 [20]	.94 [24]	--	.44 [11]	2.32 [59]	.44 [11]	.12 [3]		TIN	FIG. 2	
YA4CA7			1/2	.88 [22]	.88 [22]	3.11 [79]	1.75 [44]	.56 [14]	4.50 [114]	.63 [16]	.11 [3]		TIN	FIG. 2	
YA4CA8			1/2	.88 [22]	.88 [22]	3.11 [79]	1.75 [44]	.56 [14]	4.50 [114]	.63 [16]	.11 [3]		TIN	FIG. 2	

REV	DATE	DESCRIPTION	ECO	BY	C'H'K.
BC	2020-12-15 23:00:00 EST	NOTE ADDED IN SHEET #14, 15 AND 16	201211003133	DD	MA

COLOR CODE	BURNDY® INSTALLATION TOOLING (#CRIMPS)										DIELESS (#CRIMPS)		STRIP LENGTH
	DIE INFORMATION		MECHANICAL		HYDRAULIC						MECHANICAL	HYDRAULIC	
	DIE INDEX	TYPE	OUR840	MD6	Y34A Y34B	Y35, Y39 Y750 PAT750	Y46	Y45	Y48BH	Y60			
GREEN	375 162	GREEN DIE SET	X4CART (3)	X4CART (3) W162 (3)	A4CAB (1)	U4CABT (1) U162 (1)	U4CABT (1) U162 (1)	U4CABT (1) U162 (1)	--	--	MRC840AL (2) MY29-3 (1)	Y81KFT (1) PAT81KFT (1) Y644 (1) PAT644 (1) Y444 (1) PAT444 (1)	1"
	375	NEST INDENTOR	--	--	AICD(1) BICD(1) Y34PA	--	--	--	--	--			

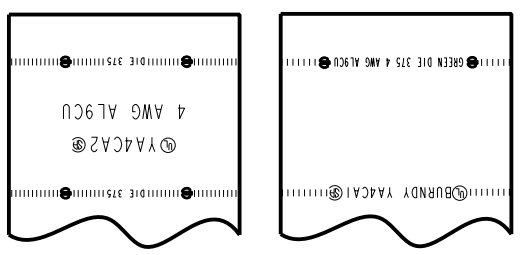
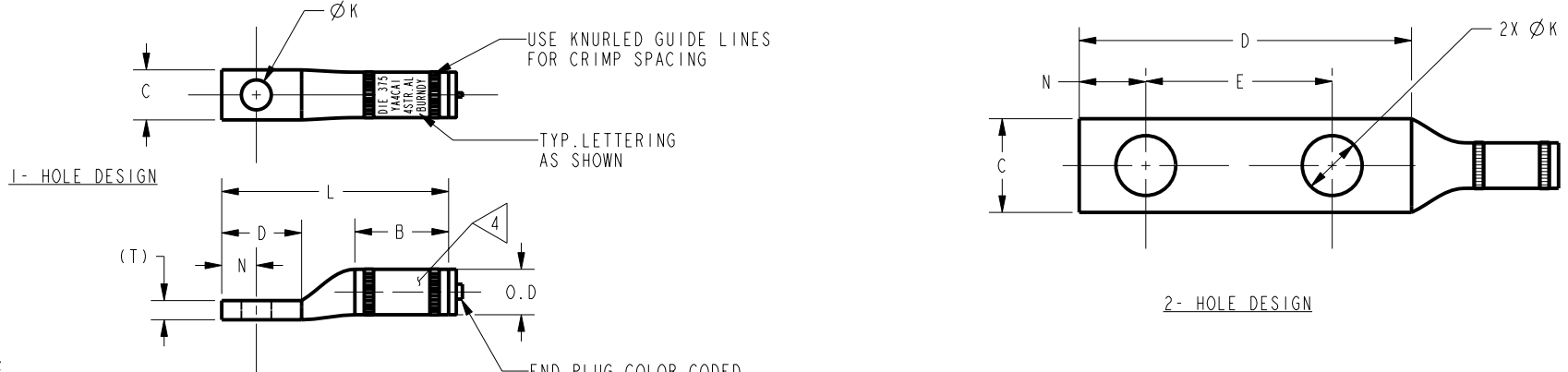


FIG. 1 FIG. 2

BARREL LETTERING VIEW



- NOTES:
- ALL HYLUGS™ ACCOMMODATE U.S. STANDARD WASHERS
 - REMOVE ALL EXCESS PENETROX™ FROM CONNECTOR AND ADJACENT CONDUCTOR PRIOR TO TAPING.
 - UL LISTED AND CSA CERTIFIED WIRE CONNECTORS. RATED 90 C (AL9CU) FOR USE WITH COPPER OR ALUMINUM CONDUCTOR. APPROVAL APPLY TO TIN PLATED CONNECTORS ONLY.
 - CONNECTOR BARRELS PREFILLED WITH PENETROX™
 - DIMENSIONS IN BRACKETS [] ARE IN MILLIMETERS ROUNDED OFF TO THE NEAREST MILLIMETER, UNLESS OTHERWISE NOTED, AND ARE FOR REFERENCE ONLY.
 - ADD SUFFIX "DT" TO ORDER LUGS WITH CRIMP BARREL SEALED AIR TIGHT INSIDE THE TRANSITION.
 - CATALOG #PT6515 ADAPTOR IS REQUIRED TO USE "U" DIES IN Y45 SERIES TOOLS.
 - CATALOG #PUADP-1 ADAPTOR IS REQUIRED TO USE "U" DIES IN Y46 SERIES TOOLS.
 - Y35P3 INDENTOR ADAPTOR REQUIRED FOR "Y34PR" TYPE INDENTORS.
 - FOR USE BY CUSTOMERS THAT HAVE THIS HYPRESS™. NO NEW HYPRESSES™ ARE BEING PROCESSED.
 - ADD SUFFIX "U" TO ORDER LUGS WITH UNDRILLED TONGUE.
 - ENLARGED BARREL MARKING VIEW.

UNINSULATED COMPRESSION TERMINAL
MATERIAL: ALUMINUM TUBE

TO ORDER BURNDY® PRODUCTS CALL		HYLUG™	
UNITED STATES: 1-800-346-4175 (LONDONDERRY, NH)		ITEM NO: NA	CAT. NO: YA4CA-(SEE TABLE)
CANADA: 1-800-361-6975 (QUEBEC) 1-800-387-6487 (ALL OTHER PROVINCES)		DRAWN BY: E.S.K 7/19/72	CHECKER: S.F.P 8/01/72
FOR PRODUCT INFO: http://www.burndy.com		DSN APPVL: R.B 8/02/72	MFG APPVL: --
		GA APPVL: D.VARIO 6/19/95	MKT APPVL: P.WERTHMAN 6/19/95
		PROD FAM: CM&R COMPRESSION	DRAWING NO: SD073935
		PROJECT #: --	REV: BC
		DOCUMENT TYPE: Sales	SCALE: 2:1
		REL LEVEL: Released	SHEET 3 OF 24

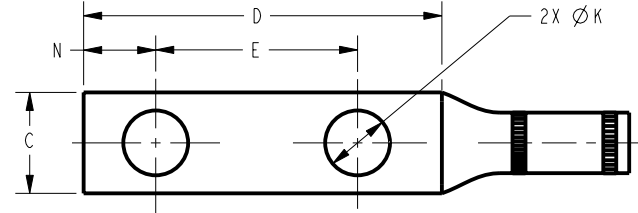
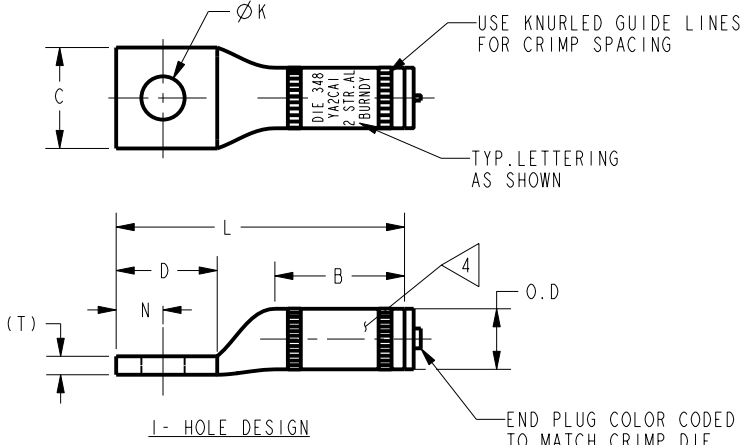
REV: PE0200

DRAWING NO.
SD073935

CATALOG NUMBER	CONDUCTOR SIZE		CONNECTOR DIMENSIONS-LINEAR MEASURE IN., [mm]											INFORMATION	BARREL LETTERING INFORMATION
	ALUMINUM	COPPER	STUD SIZE	NO. OF HOLES	B	C	D	E	Ø K	L	N	O.D.	(T)		
YA2CA1	#2 AWG- (33.6mm ²) CLASS B CONCENTRIC COMPRESSED COMPACT SIW	#2 AWG- (33.6mm ²) CLASS B,C CONCENTRIC COMPACT	5/16	1	1.12 [28]	.88 [22]	.88 [22]	--	.38 [10]	2.50 [64]	.41 [10]	.53 [13]	.16 [4]	TIN	FIG. 2
YA2CA2			1.12 [28]		.88 [22]	.88 [22]	--	.38 [10]	2.50 [64]	.41 [10]	NONE		FIG. 1		
YA2CA3			3/8	1.12 [28]	.88 [22]	.94 [24]	--	.44 [11]	2.56 [65]	.44 [11]	TIN		FIG. 2		
YA2CA4			1.12 [28]	.88 [22]	.94 [24]	--	.44 [11]	2.56 [65]	.44 [11]	NONE	FIG. 1				
YA2CA5			1/4	1.00 [25]	.50 [13]	.75 [19]	--	.28 [7]	2.25 [57]	.33 [8]	TIN		FIG. 2		
YA2CA9	1/2	2	1.12 [28]	.88 [22]	3.11 [79]	1.75 [44]	.56 [14]	4.73 [120]	.63 [16]	TIN	FIG. 2				

REV	DATE	DESCRIPTION	ECO	BY	C'H'K.
BC	2020-12-15 23:00:00 EST	NOTE ADDED IN SHEET #14, 15 AND 16	201211003133	DD	MA

COLOR CODE	BURNDY® INSTALLATION TOOLING (#CRIMPS)										DIELESS (#CRIMPS)		STRIP LENGTH
	DIE INFORMATION		MECHANICAL		HYDRAULIC						MECHANICAL	HYDRAULIC	
	DIE INDEX	TYPE	OUR840	MD6	Y34A Y34B	Y35, Y39 Y750 PAT750	Y46	Y45	Y48BH	Y60			
PINK	348 163 239	PINK DIE SET	X2CART (4) X239 (4)	X2CART (4) W163 (3) W239 (2)	A2CAB (1)	U2CABT (1) U163 (1) U239 (1)	U2CABT (1) U163 (1) U239 (1)	U2CABT (1) U163 (1) U239 (1)	--	--	MRC840AL (2) MY29-3 (2)	Y81KFT (2) PAT81KFT (2) Y644 (1) PAT644 (1) Y444 (1) PAT444 (1)	1 1/4"
	348	NEST INDENTOR	--	--	A26D(1) B26D(1) Y34PA	--	--	--	--	--			



2- HOLE DESIGN

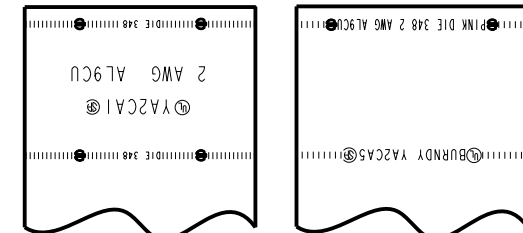


FIG. 1

FIG. 2

BARREL LETTERING VIEW

UNINSULATED COMPRESSION TERMINAL
MATERIAL: ALUMINUM TUBE

NOTES:

- ALL HYLUGS™ ACCOMMODATE U.S. STANDARD WASHERS
- REMOVE ALL EXCESS PENETROX™ FROM CONNECTOR AND ADJACENT CONDUCTOR PRIOR TO TAPING.
- UL LISTED AND CSA CERTIFIED WIRE CONNECTORS, RATED 90 C (AL9CU) FOR USE WITH COPPER OR ALUMINUM CONDUCTOR. APPROVAL APPLY TO TIN PLATED CONNECTORS ONLY.
- CONNECTOR BARRELS PREFILLED WITH PENETROX™
- DIMENSIONS IN BRACKETS [] ARE IN MILLIMETERS ROUNDED OFF TO THE NEAREST MILLIMETER, UNLESS OTHERWISE NOTED, AND ARE FOR REFERENCE ONLY.
- ADD SUFFIX "DT" TO ORDER LUGS WITH CRIMP BARREL SEALED AIR TIGHT INSIDE THE TRANSITION.
- CATALOG #PT6515 ADAPTOR IS REQUIRED TO USE "U" DIES IN Y45 SERIES TOOLS.
- CATALOG #PUADP-1 ADAPTOR IS REQUIRED TO USE "U" DIES IN Y46 SERIES TOOLS.
- Y35P3 INDENTOR ADAPTOR REQUIRED FOR "Y34PR" TYPE INDENTORS.
- FOR USE BY CUSTOMERS THAT HAVE THIS HYPRESS™. NO NEW HYPRESSES™ ARE BEING PROCESSED.
- ADD SUFFIX "U" TO ORDER LUGS WITH UNDRILLED TONGUE.
- ENLARGED BARREL MARKING VIEW.

REV: PE0200

TO ORDER BURNDY® PRODUCTS CALL		HYLUG™	
UNITED STATES: 1-800-346-4175 (LONDONDERRY, NH)		ITEM NO: NA	
CANADA: 1-800-361-6975 (QUEBEC) 1-800-387-6487 (ALL OTHER PROVINCES)		CAT. NO: YA2CA-(SEE TABLE)	
FOR PRODUCT INFO: http://www.burndy.com		DRAWN BY: E.S.K 7/19/72	
		CHECKER: S.F.P 8/01/72	
		DSN APPVL: R.B 8/02/72	
		MFG APPVL: --	
		QA APPVL: D.VARIO 6/19/95	
		MKT APPVL: P.WERTHMAN 6/19/95	
		SCALE: 1:1	
		PROD FAM: CM&R COMPRESSION	
		DRAWING NO	
		SD073935	
		REV	
		BC	
		SHEET 4 OF 24	

REV: PE0200

DRAWING NO.
SD073935

CATALOG NUMBER	CONDUCTOR SIZE		CONNECTOR DIMENSIONS-LINEAR MEASURE IN, [mm]										INFORMATION	BARREL LETTERING INFORMATION	
	ALUMINUM	COPPER	STUD SIZE	NO. OF HOLES	B	C	D	E	Ø K	L	N	O.D.			(T)
YAICA1	#1 AWG- (42.4mm ²) CLASS B CONCENTRIC COMPRESSED SIW	#1 AWG- (42.4mm ²) CLASS B,C CONCENTRIC COMPACT	3/8	1	.91 [23]	.76 [19]	1.19 [30]	--	.44 [11]	2.59 [66]	.44 [11]	.54 [14]	.19 [5]	TIN	FIG. 2
YAICA2			1/4		.91 [23]	.52 [13]	.75 [19]	--	.28 [7]	2.16 [55]	.33 [8]		.19 [5]	NONE	FIG. 1
YAICA3			5/16		.91 [23]	.76 [19]	.81 [21]	--	.38 [10]	2.25 [57]	.41 [10]		.19 [5]	TIN	FIG. 2
YAICA4			1/2		.91 [23]	.88 [22]	3.11 [79]	1.75 [44]	.56 [14]	4.52 [115]	.63 [16]		.19 [5]	TIN	FIG. 2
YAICA9			1/2		.91 [23]	.88 [22]	3.11 [79]	1.75 [44]	.56 [14]	4.52 [115]	.63 [16]		.19 [5]	TIN	FIG. 2

REV	DATE	DESCRIPTION	ECO	BY	C'H'K.
BC	2020-12-15 23:00:00 EST	NOTE ADDED IN SHEET #14, 15 AND 16	201211003133	DD	MA

COLOR CODE	BURNDY® INSTALLATION TOOLING (#CRIMPS)										DIELESS (#CRIMPS)		STRIP LENGTH
	DIE INFORMATION		MECHANICAL		HYDRAULIC						MECHANICAL	HYDRAULIC	
	DIE INDEX	TYPE	OUR840	MD6	Y34A Y34B	Y35, Y39 Y750 PAT750	Y46	Y45	Y48BH	Y60			
GOLD	471 163	GOLD DIE SET	XICART (3)	XICART (3) WI63 (3)	AICAR (1)	UICART (1) UI63 (1)	UICART (1) UI63 (1)	UICART (1) UI63 (1)	--	--	MRC840AL (2) MY29-3 (2)	Y81KFT (2) PAT81KFT (2) Y644 (1) PAT644 (1) Y444 (1) PAT444 (1)	1 1/16"
	471	NEST INDENTOR	--	--	A26D(1) B26D(1) Y34PR-5	--	P26D(1) P34PR-5	--	--	--	--		

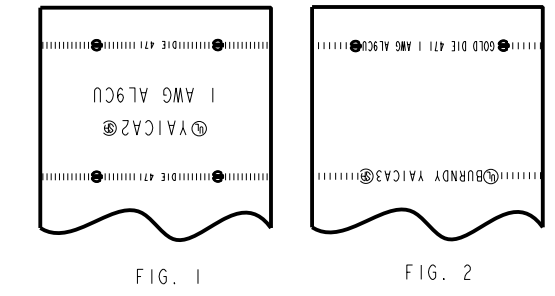
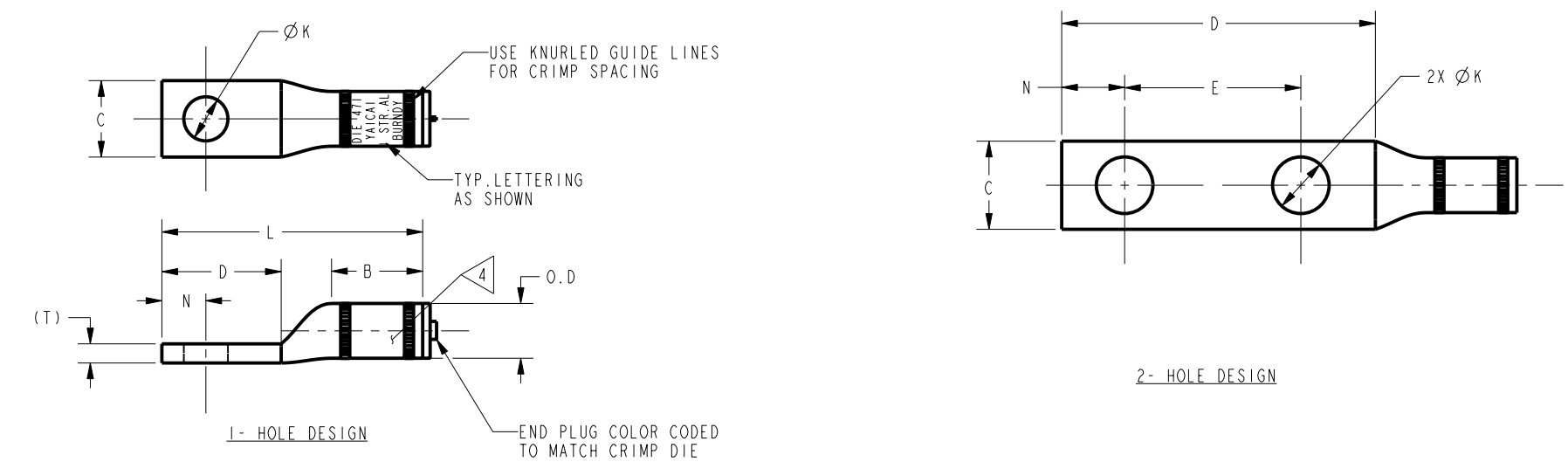


FIG. 1
FIG. 2
BARREL LETTERING VIEW



- NOTES:
- ALL HYLUGS™ ACCOMMODATE U.S. STANDARD WASHERS
 - REMOVE ALL EXCESS PENETROX™ FROM CONNECTOR AND ADJACENT CONDUCTOR PRIOR TO TAPING.
 - UL LISTED AND CSA CERTIFIED WIRE CONNECTORS. RATED 90 C (AL9CU) FOR USE WITH COPPER OR ALUMINUM CONDUCTOR. APPROVAL APPLY TO TIN PLATED CONNECTORS ONLY.
 - CONNECTOR BARRELS PREFILLED WITH PENETROX™
 - DIMENSIONS IN BRACKETS [] ARE IN MILLIMETERS ROUNDED OFF TO THE NEAREST MILLIMETER, UNLESS OTHERWISE NOTED, AND ARE FOR REFERENCE ONLY.
 - ADD SUFFIX "DT" TO ORDER LUGS WITH CRIMP BARREL SEALED AIR TIGHT INSIDE THE TRANSITION.
 - CATALOG #PT6515 ADAPTOR IS REQUIRED TO USE "U" DIES IN Y45 SERIES TOOLS.
 - CATALOG #PUADP-1 ADAPTOR IS REQUIRED TO USE "U" DIES IN Y46 SERIES TOOLS.
 - Y35P3 INDENTOR ADAPTOR REQUIRED FOR "Y34PR" TYPE INDENTORS.
 - FOR USE BY CUSTOMERS THAT HAVE THIS HYPRESS™. NO NEW HYPRESSES™ ARE BEING PROCESSED.
 - ADD SUFFIX "U" TO ORDER LUGS WITH UNDRILLED TONGUE.
 - ENLARGED BARREL MARKING VIEW.

TO ORDER BURNDY® PRODUCTS CALL		HYLUG™	
UNITED STATES: 1-800-346-4175 (LONDONDERRY, NH)		ITEM NO: NA	
CANADA: 1-800-361-6975 (QUEBEC) 1-800-387-6487 (ALL OTHER PROVINCES)		CAT. NO: YAICA-(SEE TABLE)	
FOR PRODUCT INFO: http://www.burndy.com		DRAWN BY: E.S.K 7/19/72	
		CHECKER: S.F.P 8/01/72	
		DSN APPVL: R.B 8/02/72	
		MFG APPVL: --	
		QA APPVL: D.VARIO 6/19/95	
		MKT APPVL: P.WERTHMAN 6/19/95	
		SCALE: 1:1	
		PROD FAM: CM&R COMPRESSION	
		DRAWING NO	
		SD073935	
		REV	
		BC	
		SHEET 5 OF 24	

REV: PE0200

A

B

C

D

A

B

C

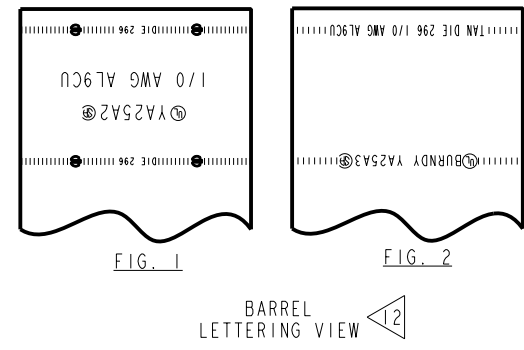
D

DRAWING NO.
SD073935

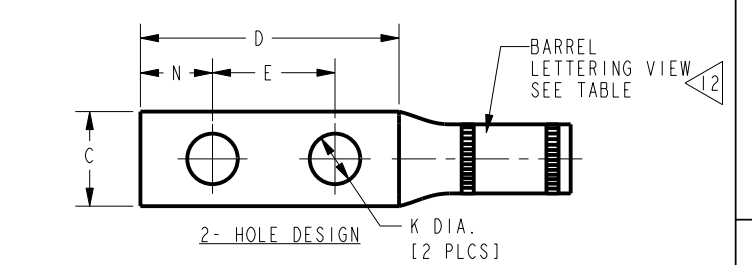
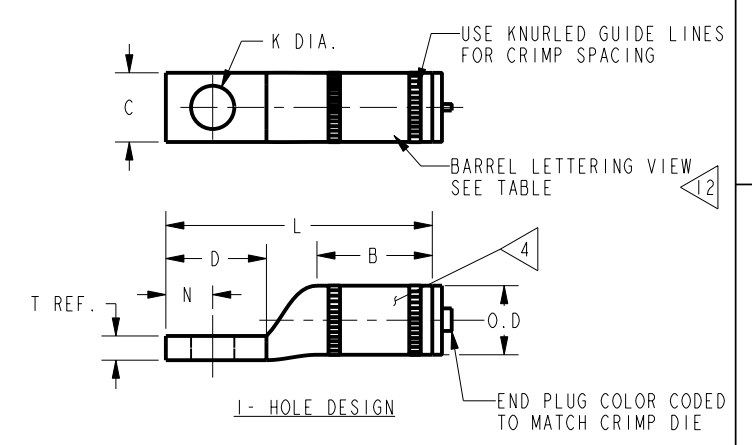
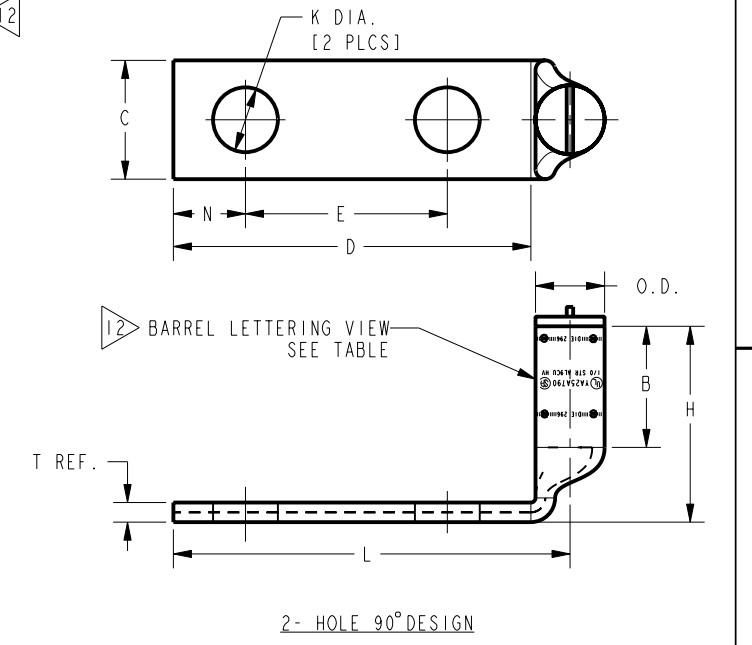
CATALOG NUMBER	CONDUCTOR SIZE		CONNECTOR DIMENSIONS-LINEAR MEASURE IN, [mm]													INFORMATION	
	ALUMINUM	COPPER	STUD SIZE	NO. OF HOLES	B	C	D	E	H	K DIA.	L	N	O.D	T REF.	PLATING	BARREL LETTERING INFORMATION	
YA25A1	1/0 AWG- (53.5mm ²) CLASS B CONCENTRIC COMPRESSED SIW	1/0 AWG (53.5mm ²) CLASS B, C CONCENTRIC COMPRESSED	5/16	1	1.00	.60	.87	--	--	.38	2.31	.41	.60	.21	TIN	FIG. 2	
YA25A2					[25]	[15]	[22]	--	--	[10]	[59]	[10]			[5]	NONE	FIG. 1
YA25A3			3/8	1	1.05	.82	1.18	--	--	.44	2.67	.63	.60	.21	TIN	FIG. 2	
YA25A3NT69					[27]	[21]	[30]	--	--	[11]	[68]	[16]			[5]	NONE	FIG. 2
YA25A4			3/8	1	1.05	.82	1.18	--	--	.44	2.67	.63	.60	.21	TIN	FIG. 1	
YA25A9					[27]	[21]	[30]	--	--	[11]	[68]	[16]			[5]	NONE	FIG. 1
YA25A10			--	--	--	--	1.00	.60	.87	--	--	.56	2.83	.63	.60	TIN	FIG. 2
YA25A5							[25]	[15]	[22]	--	--	[14]	[72]	[16]		[5]	NONE
YA25A6			3/8	1	--	--	1.05	.82	2.24	1.06	--	.44	3.73	.63	.60	TIN	FIG. 2
YA25A7							[27]	[21]	[57]	[27]	--	--	[11]	[95]		[16]	[5]
YA25A8			1/2	2	--	--	1.05	1.03	3.10	1.75	--	.56	4.59	.63	.60	TIN	FIG. 2
YA25A790							[27]	[26]	[79]	[44]	--	--	[14]	[117]		[16]	[4]
					1.70						3.44			TIN	FIG. 2		
					[43]						[87]						

COLOR CODE	BURNDY® INSTALLATION TOOLING (#CRIMPS)										DIELESS (#CRIMPS)		STRIP LENGTH
	DIE INFORMATION		MECHANICAL		HYDRAULIC						MECHANICAL	HYDRAULIC	
	DIE INDEX	TYPE	OUR840	MD6	Y34A Y34B	Y35, Y39 Y750, PAT750	Y46	Y45	Y48BH	Y60			
TAN	296 241	TAN DIE SET	X25ART (4) X241 (4)	X25ART (4) W241 (2)	A25AR (1)	U25ART(1) U241 (1)	U25ART(1) U241 (1)	U25ART (1) U241 (1)	C25AR (1) U241 (1)	--	MRC840AL (2) MY29-3 (2)	Y81KFT (2) PAT81KFT (2) Y644 (1) PAT644 (1) Y444 (1) PAT444 (1)	1 3/16"
	296	NEST INDENTOR	--	--	A27D(1) B27D(1) Y34PR-5	--	P27D(1) P34PR-5	--	--	--			

- NOTES:
- ALL HYLUGS™ ACCOMMODATE U.S. STANDARD WASHERS
 - REMOVE ALL EXCESS PENETROX™ FROM CONNECTOR AND ADJACENT CONDUCTOR PRIOR TO TAPING.
 - UL LISTED AND CSA CERTIFIED WIRE CONNECTORS. RATED 90 C (AL9CU) FOR USE WITH COPPER OR ALUMINUM CONDUCTOR. APPROVAL APPLY TO TIN PLATED CONNECTORS ONLY.
 - CONNECTOR BARRELS PREFILLED WITH PENETROX™
 - DIMENSIONS IN BRACKETS [] ARE IN MILLIMETERS ROUNDED OFF TO THE NEAREST MILLIMETER, UNLESS OTHERWISE NOTED, AND ARE FOR REFERENCE ONLY.
 - ADD SUFFIX "DT" TO ORDER LUGS WITH CRIMP BARREL SEALED AIR TIGHT INSIDE THE TRANSITION.
 - CATALOG #PT6515 ADAPTOR IS REQUIRED TO USE "U" DIES IN Y45 SERIES TOOLS.
 - CATALOG #PUADP-1 ADAPTOR IS REQUIRED TO USE "U" DIES IN Y46 SERIES TOOLS.
 - Y35P3 INDENTOR ADAPTOR REQUIRED FOR "Y34PR" TYPE INDENTORS.
 - FOR USE BY CUSTOMERS THAT HAVE THIS HYPRESS™. NO NEW HYPRESSES™ ARE BEING PROCESSED.
 - ADD SUFFIX "U" TO ORDER LUGS WITH UNDRILLED TONGUE.
 - ENLARGED BARREL MARKING VIEW.



REV	DATE	DESCRIPTION	ECO	BY	C'H'K.
BC	2020-12-15 23:00:00 EST	NOTE ADDED IN SHEET #14, 15 AND 16	201211003133	DD	MA



UNINSULATED COMPRESSION TERMINAL
MATERIAL: ALUMINUM TUBE

TO ORDER BURNDY® PRODUCTS CALL		HYLUG™	
UNITED STATES: 1-800-346-4175 (LONDONDERRY, NH)		ITEM NO: NA	
CANADA: 1-800-361-6975 (QUEBEC) 1-800-387-6487 (ALL OTHER PROVINCES)		CAT. NO: YA25A-(SEE TABLE)	
FOR PRODUCT INFO: http://www.burndy.com		DRAWN BY: E.S.K 7/19/72	
		CHECKER: S.F.P 8/01/72	
		DSN APPVL: R.B 8/02/72	
		MFG APPVL: --	
		QA APPVL: D.VARIO 6/19/95	
		MKT APPVL: P.WERTHMAN 6/19/95	
		SCALE: 1:1	
		PROD FAM: CM&R COMPRESSION	
		DRAWING NO	
		SD073935	
		REV	
		BC	
		SHEET 6 OF 24	

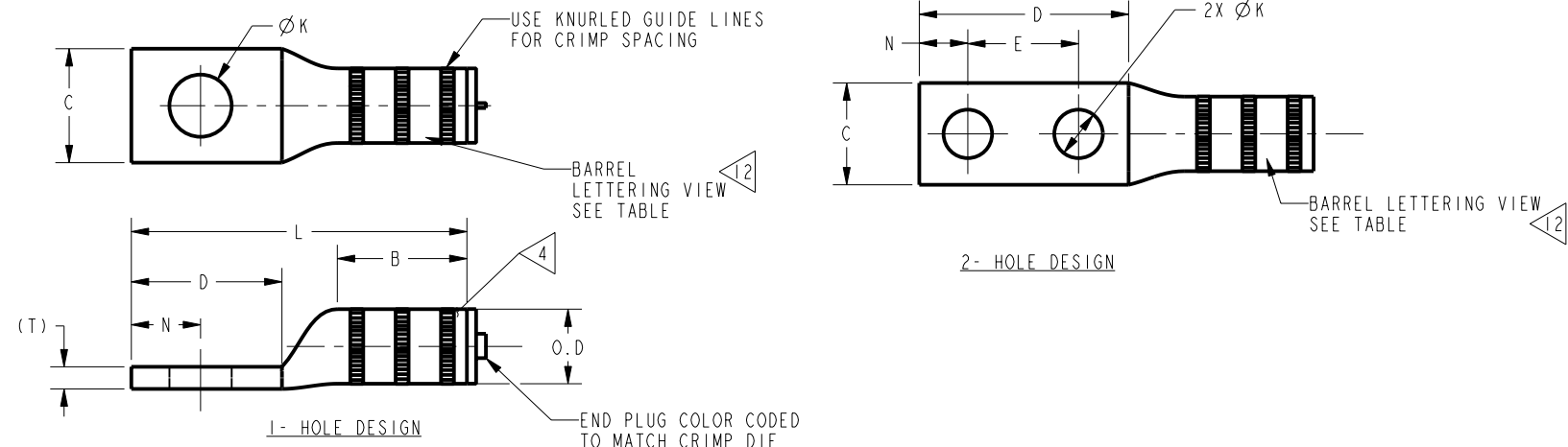
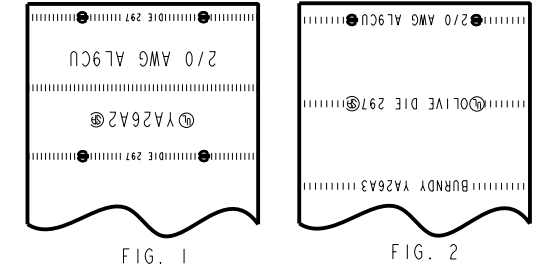
REV: PE0200

DRAWING NO.
SD073935

CATALOG NUMBER	CONDUCTOR SIZE		CONNECTOR DIMENSIONS-LINEAR MEASURE ϕ N, [mm]										INFORMATION	BARREL LETTERING INFORMATION	
	ALUMINUM	COPPER	STUD SIZE	NO.OF. HOLES	B	C	D	E	ϕ K	L	N	O.D			(T)
YA26A1	2/0 AWG- (67.4mm ²) CLASS B CONCENTRIC COMPRESSED COMPACT SIW	2/0 AWG- (67.4mm ²) CLASS B,C CONCENTRIC COMPRESSED COMPACT	1/2	1	1.17	1.03	1.36	--	.56	3.03	.63	.67 [17]	.20	TIN	FIG. 2
YA26A2			[30]		[26]	[35]		[14]	[77]	[16]	[5]		NONE	FIG. 1	
YA26A6			3/8		1.17	.67	1.18	--	.44	2.79	.44		.24	TIN	FIG. 2
YA26A7			5/16		1.17	.67	.81	--	.38	2.52	.41		.24	TIN	FIG. 2
YA26A8			5/8		1.17	1.03	1.36	--	.69	3.03	.63		.20	TIN	FIG. 2
YA26A9			5/16		1.17	1.03	1.57	.75	.38	3.24	.41		.24	TIN	FIG. 2
YA26A3			1/2	1.17	1.03	3.11	1.75	.56	4.78	.63	.20		TIN	FIG. 2	
YA26A4			3/8	1.17	.92	1.89	1.00	.44	3.56	.44	.24		NONE	FIG. 1	
YA26A5			3/8	[30]	[23]	[48]	[25]	[11]	[90]	[11]	[6]		TIN	FIG. 2	

REV	DATE	DESCRIPTION	ECO	BY	C'H'K.
BC	2020-12-15 23:00:00 EST	NOTE ADDED IN SHEET #14, 15 AND 16	201211003133	DD	MA

COLOR CODE	BURNDY® INSTALLATION TOOLING (#CRIMPS)										DIELESS (#CRIMPS)		STRIP LENGTH
	DIE INFORMATION		MECHANICAL		HYDRAULIC						MECHANICAL	HYDRAULIC	
	DIE INDEX	TYPE	OUR840	MD6	Y34A Y34B	Y35, Y39 Y750 PAT750	Y46	Y45	Y48BH	Y60			
OLIVE	297 BG 245	OLIVE DIE SET	X26ART (4) XBG (4) X245 (4)	X26ART (4) WBG (2) W245 (3)	A26AR (2)	U26ART (2) UBG (2) U245 (1)	U26ART (2) UBG (2) U245 (1)	U26ART (2) UBG (2) U245 (1)	C28AR (1)	--	MRC840AL (3) MY29-3 (2)	Y81KFT (2) PAT81KFT (2) Y644 (1) PAT644 (1) Y444 (1) PAT444 (1)	1 3/8"
	297	NEST INDENTOR	--	--	A29D(1) B29D(1) Y34PR-5	--	P29D(1) P34PR-5	--	--	--	--		



- NOTES:
- ALL HYLUGS™ ACCOMMODATE U.S. STANDARD WASHERS
 - REMOVE ALL EXCESS PENETROX™ FROM CONNECTOR AND ADJACENT CONDUCTOR PRIOR TO TAPING.
 - UL LISTED AND CSA CERTIFIED WIRE CONNECTORS, RATED 90 C (AL9CU) FOR USE WITH COPPER OR ALUMINUM CONDUCTOR. APPROVAL APPLY TO TIN PLATED CONNECTORS ONLY.
 - CONNECTOR BARRELS PREFILLED WITH PENETROX™
 - DIMENSIONS IN BRACKETS [] ARE IN MILLIMETERS ROUNDED OFF TO THE NEAREST MILLIMETER, UNLESS OTHERWISE NOTED, AND ARE FOR REFERENCE ONLY.
 - ADD SUFFIX "DT" TO ORDER LUGS WITH CRIMP BARREL SEALED AIR TIGHT INSIDE THE TRANSITION.
 - CATALOG #PT6515 ADAPTOR IS REQUIRED TO USE "U" DIES IN Y45 SERIES TOOLS.
 - CATALOG #PUADP-1 ADAPTOR IS REQUIRED TO USE "U" DIES IN Y46 SERIES TOOLS.
 - Y35P3 INDENTOR ADAPTOR REQUIRED FOR "Y34PR" TYPE INDENTORS.
 - FOR USE BY CUSTOMERS THAT HAVE THIS HYPRESS™. NO NEW HYPRESSES™ ARE BEING PROCESSED.
 - ADD SUFFIX "U" TO ORDER LUGS WITH UNDRILLED TONGUE.
 - ENLARGED BARREL MARKING VIEW.

UNINSULATED COMPRESSION TERMINAL
MATERIAL: ALUMINUM TUBE

TO ORDER BURNDY® PRODUCTS CALL		HYLUG™	
UNITED STATES: 1-800-346-4175 (LONDONDERRY, NH)		ITEM NO: NA	CAT. NO: YA26A-(SEE TABLE)
CANADA: 1-800-361-6975 (QUEBEC) 1-800-387-6487 (ALL OTHER PROVINCES)		DRAWN BY: E.S.K 7/9/72	CHECKER: S.F.P 8/01/72
FOR PRODUCT INFO: http://www.burndy.com		DSN APPVL: R.B 8/02/72	MFG APPVL: --
		GA APPVL: D.VARIO 6/19/95	MKT APPVL: P.WERTHMAN 6/19/95
		PROD FAM: CM&R COMPRESSION	DRAWING NO: SD073935
		PROJECT #: --	SCALE: 1:1
		DOCUMENT TYPE: Sales	REV: BC
		REL LEVEL: Released	SHEET 7 OF 24

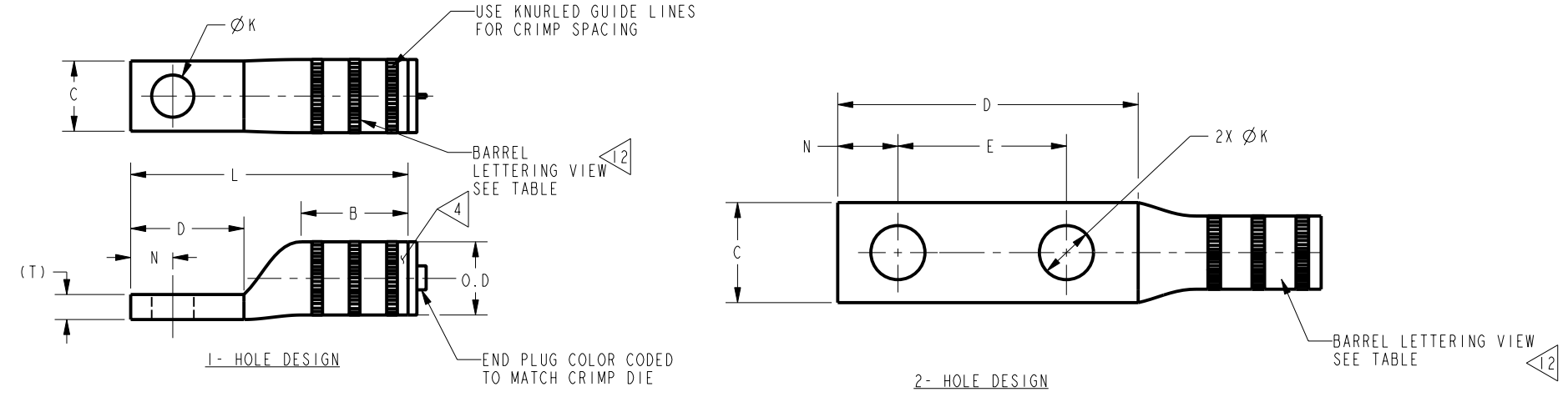
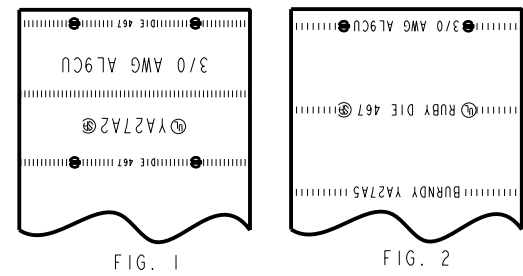
REV: PE0200

DRAWING NO.
SD073935

CATALOG NUMBER	CONDUCTOR SIZE		CONNECTOR DIMENSIONS- LINEAR MEASURE (in, mm)											INFORMATION	BARREL LETTERING INFORMATION
	ALUMINUM	COPPER	STUD SIZE	NO. OF HOLES	B	C	D	E	Ø K	L	N	O.D.	(T)		
YA27A1	3/0 AWG- (86mm ²) CLASS B CONCENTRIC COMPRESSED COMPACT SIW	3/0 AWG- (86mm ²) CLASS B,C CONCENTRIC COMPRESSED COMPACT	3/8	1	1.11	.73	1.18	--	.44	2.88	.44	.76	.26	TIN	FIG. 2
[28]					[19]	[30]	[11]	[73]	[11]	[7]	NONE		FIG. 1		
YA27A2			1/2	1	1.31	1.04	1.37	--	.56	3.27	.63	.76	.26	TIN	FIG. 2
[33]					[26]	[35]	[14]	[83]	[16]	[7]	NONE		FIG. 1		
YA27A3			1/2	2	1.31	1.04	3.12	1.75	.56	5.02	.63	.76	.26	TIN	FIG. 2
[33]					[26]	[79]	[44]	[14]	[128]	[16]	[7]		NONE	FIG. 1	
YA27A4			1/2	2	1.31	1.04	1.89	1.00	.44	3.79	.44	.76	.26	TIN	FIG. 2
[33]	[26]	[48]			[25]	[11]	[96]	[11]	[7]	NONE	FIG. 1				
YA27A5	1/2	2	1.31	1.04	1.89	1.00	.44	3.79	.44	.76	.26	TIN	FIG. 2		
[33]			[26]	[48]	[25]	[11]	[96]	[11]	[7]		NONE	FIG. 1			
YA27A6	1/2	2	1.31	1.04	1.89	1.00	.44	3.79	.44	.76	.26	TIN	FIG. 2		
[33]			[26]	[48]	[25]	[11]	[96]	[11]	[7]		NONE	FIG. 1			
YA27A7	3/8	2	1.31	1.04	1.89	1.00	.44	3.79	.44	.76	.26	TIN	FIG. 2		

REV	DATE	DESCRIPTION	ECO	BY	C'H'K.
BC	2020-12-15 23:00:00 EST	NOTE ADDED IN SHEET #14, 15 AND 16	201211003133	DD	MA

COLOR CODE	BURNDY® INSTALLATION TOOLING (# CRIMPS)										DIELESS (#CRIMPS)		STRIP LENGTH
	DIE INFORMATION		MECHANICAL		HYDRAULIC						MECHANICAL	HYDRAULIC	
	DIE INDEX	TYPE	OUR840	MD6	Y34A Y34B	Y35, Y39 Y750 PAT750	Y46	Y45	Y48BH	Y60			
RUBY	467 166	RUBY DIE SET	X27ART (4)	X27ART (4) WI66 (4)	A27AR (2)	U27ART (2) U166 (2)	U27ART (2) U166 (2)	U27ART (2) U166 (2)	U27AR (1)	--	MRC840AL (3) MY29-3 (2)	Y81KFT (2) PAT81KFT (2) Y644 (1) PAT644 (1) Y444 (1) PAT444 (1)	1 1/2"
	467	NEST INDENTOR	--	--	A30D(1) B30D(1) Y34PR-5	--	P30D(1) P34PR-5	--	--	--			



- NOTES:
- ALL HYLUGS™ ACCOMMODATE U.S. STANDARD WASHERS
 - REMOVE ALL EXCESS PENETROX™ FROM CONNECTOR AND ADJACENT CONDUCTOR PRIOR TO TAPING.
 - UL LISTED AND CSA CERTIFIED WIRE CONNECTORS, RATED 90 C (AL9CU) FOR USE WITH COPPER OR ALUMINUM CONDUCTOR. APPROVAL APPLY TO TIN PLATED CONNECTORS ONLY.
 - CONNECTOR BARRELS PREFILLED WITH PENETROX™
 - DIMENSIONS IN BRACKETS [] ARE IN MILLIMETERS ROUNDED OFF TO THE NEAREST MILLIMETER, UNLESS OTHERWISE NOTED, AND ARE FOR REFERENCE ONLY.
 - ADD SUFFIX "DT" TO ORDER LUGS WITH CRIMP BARREL SEALED AIR TIGHT INSIDE THE TRANSITION.
 - CATALOG #PT6515 ADAPTOR IS REQUIRED TO USE "U" DIES IN Y45 SERIES TOOLS.
 - CATALOG #PUADP-1 ADAPTOR IS REQUIRED TO USE "U" DIES IN Y46 SERIES TOOLS.
 - Y35P3 INDENTOR ADAPTOR REQUIRED FOR "Y34PR" TYPE INDENTORS.
 - FOR USE BY CUSTOMERS THAT HAVE THIS HYPRESS™. NO NEW HYPRESSES™ ARE BEING PROCESSED.
 - ADD SUFFIX "U" TO ORDER LUGS WITH UNDRILLED TONGUE.
 - ENLARGED BARREL MARKING VIEW.

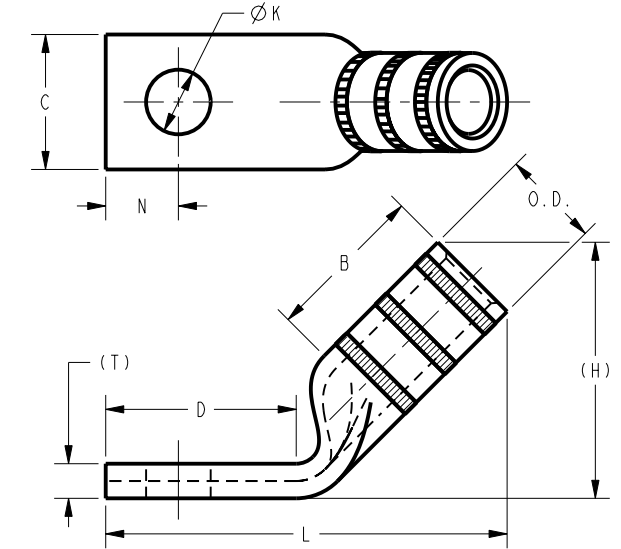
UNINSULATED COMPRESSION TERMINAL MATERIAL: ALUMINUM TUBE

TO ORDER BURNDY® PRODUCTS CALL		HYLUG™	
UNITED STATES: 1-800-346-4175 (LONDONDERRY, NH)		ITEM NO: NA	CAT. NO: YA27A-(SEE TABLE)
CANADA: 1-800-361-6975 (QUEBEC) 1-800-387-6487 (ALL OTHER PROVINCES)		DRAWN BY: E.S.K 7/19/72	CHECKER: S.F.P 8/01/72
FOR PRODUCT INFO: http://www.burndy.com		DSN APPVL: R.B 8/02/72	MFG APPVL: --
		GA APPVL: D.VARIO 6/19/95	MKT APPVL: P.WERTHMAN 6/19/95
		PROD FAM: CM&R COMPRESSION	DRAWING NO: SD073935
		PROJECT #: --	REV: BC
		DOCUMENT TYPE: Sales	SIZE: C
		REL LEVEL: Released	SHEET 8 OF 24

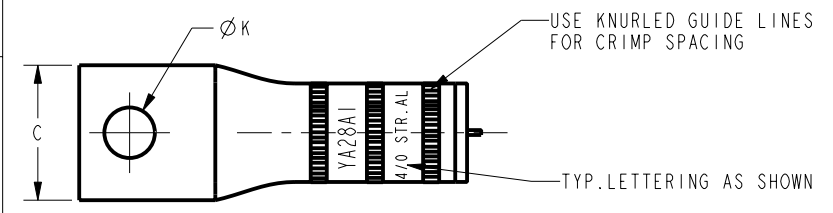
REV: PE0200

DRAWING NO. SD073935	CONDUCTOR SIZE		CONNECTOR DIMENSIONS-LINEAR MEASURE IN. [mm]											INFORMATION	
	ALUMINUM	COPPER	STUD SIZE	NO. OF HOLES	B ±.08	C ±.04	D REF.	E ±.02	ØK ±.02	L ±.12	N ±.03	O.D. ±.01	T REF.		H REF.
YA28A1	4/0 AWG- (107mm ²) CLASS B CONCENTRIC COMPRESSED S1W	4/0 AWG- (107mm ²) CLASS B, C CONCENTRIC COMPRESSED COMPACT	3/8	1	1.39	1.17	1.18	--	.44	3.26	.44	.85 [22]	.30 [8]	--	TIN
YA28A2					[35]	[30]	[30]	--	[11]	[83]	[11]				NONE
YA28A3					1.39	1.17	1.36	--	.56	3.44	.63				TIN
YA28A4			1/2	1	[35]	[30]	[35]	--	[14]	[87]	[16]	NONE			
YA28A9			5/8	1	1.39	1.17	1.52	--	.69	3.60	.75	TIN			
YA28A5			1/2	2	1.39	1.17	3.11	1.75	.56	5.19	.63	TIN			
YA28A6					[35]	[30]	[79]	[44]	[14]	[132]	[16]	NONE			
YA28A7			3/8	2	1.39	1.17	1.89	1.00	.44	3.97	.44	TIN			
YA28A8			1/2	1	[35]	[30]	[48]	[25]	[11]	[101]	[11]	NONE			
YA28A8			1/2	2	1.39	1.17	3.11	1.75	.56	5.19	.63	NONE			
YA28A8			1/2	1	[35]	[30]	[79]	[44]	[14]	[132]	[16]	NONE			
YA28A345			1/2	1	1.39	1.17	1.36	--	.56	3.48	.63	TIN			
YA28A390			1/2	1	[35]	[30]	[35]	--	[14]	1.90	[16]	TIN			
YA28A590	1/2	2	1.39	1.17	3.11	1.75	.56	3.63	.63	TIN					
YA28A590	1/2	2	[35]	[30]	[79]	[44]	[14]	[98]	[16]	TIN					

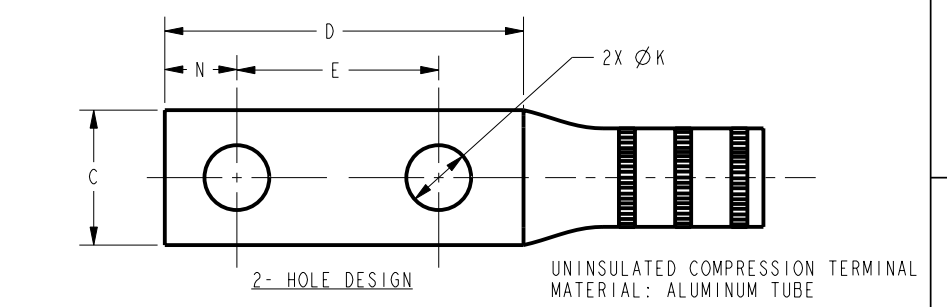
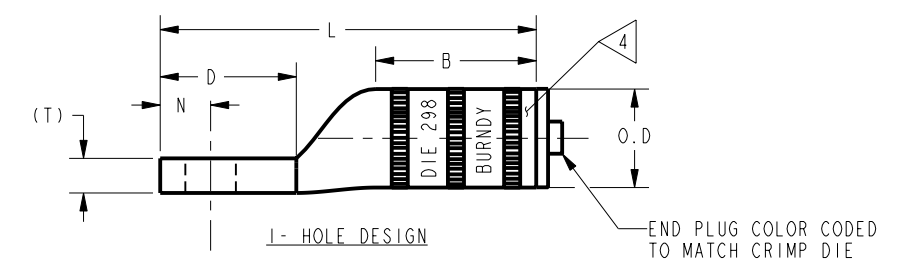
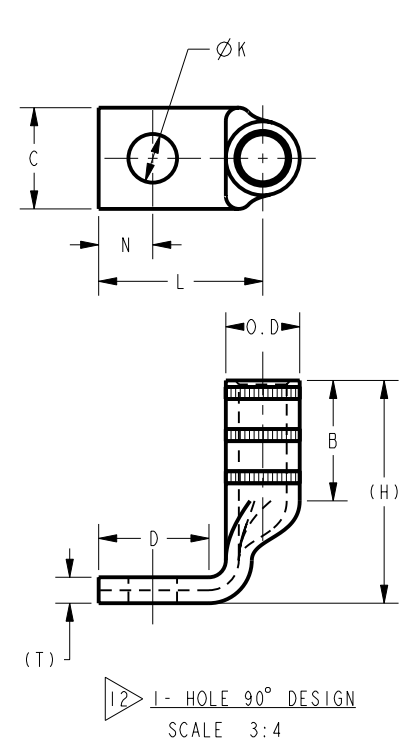
REV	DATE	DESCRIPTION	ECO	BY	C'H'K.
BC	2020-12-15 23:00:00 EST	NOTE ADDED IN SHEET #14, 15 AND 16	201211003133	DD	MA



COLOR CODE	BURNDY® INSTALLATION TOOLING (#CRIMPS)										DIELESS (#CRIMPS)		STRIP LENGTH
	DIE INFORMATION		MECHANICAL		HYDRAULIC						MECHANICAL	HYDRAULIC	
	DIE INDEX	TYPE	OUR840	MD6	Y34A Y34B	Y35, Y39 Y750 PAT750	Y46	Y45	Y48BH	Y60			
WHITE	298 660	WHITE DIE SET	X28ART (6) X660 (8)	X28ART (6) W660 (3)	A28AR (2)	U28ART (2) U660 (2)	U28ART (2) U660 (2)	U28ART (2) U660 (2)	C28AR (1)	--	MRC840AL (3) MY29-3 (2)	Y81KFT (2) PAT81KFT (2) Y644 (1) PAT644 (1) Y444 (1) PAT444 (1)	1 5/8"
	298	NEST INDENTOR	--	--	A31D(1) B31D(1) Y34PR-5	--	P31D(1) P34PR-5	--	--	--	--		



- NOTES:**
- ALL HYLUGS™ ACCOMMODATE U.S. STANDARD WASHERS
 - REMOVE ALL EXCESS PENETROX™ FROM CONNECTOR AND ADJACENT CONDUCTOR PRIOR TO TAPING.
 - UL LISTED AND CSA CERTIFIED WIRE CONNECTORS. RATED 90 C (AL9CU) FOR USE WITH COPPER OR ALUMINUM CONDUCTOR. APPROVAL APPLY TO TIN PLATED CONNECTORS ONLY.
 - CONNECTOR BARRELS PREFILLED WITH PENETROX™
 - DIMENSIONS IN BRACKETS [] ARE IN MILLIMETERS ROUNDED OFF TO THE NEAREST MILLIMETER, UNLESS OTHERWISE NOTED, AND ARE FOR REFERENCE ONLY.
 - NO-OX-ID "A" COATED TO PREVENT FORMATION OF OXIDATION
 - ADD SUFFIX "DT" TO ORDER LUGS WITH CRIMP BARREL SEALED AIR TIGHT INSIDE THE TRANSITION.
 - CATALOG #PT6515 ADAPTOR IS REQUIRED TO USE "U" DIES IN Y45 SERIES TOOLS.
 - CATALOG #PUADP-1 ADAPTOR IS REQUIRED TO USE "U" DIES IN Y46 SERIES TOOLS.
 - Y35P3 INDENTOR ADAPTOR REQUIRED FOR "Y34PR" TYPE INDENTORS.
 - FOR USE BY CUSTOMERS THAT HAVE THIS HYPRESS™. NO NEW HYPRESSES™ ARE BEING PROCESSED.
 - CAN ALSO BE ORDERED AS 2 HOLE 45 AND 90 DEGREE.
 - ADD SUFFIX "U" TO ORDER LUGS WITH UNDRILLED TONGUE.



TO ORDER BURNDY® PRODUCTS CALL		HYLUG™	
UNITED STATES: 1-800-346-4175 (LONDONDERRY, NH)		ITEM NO: NA	
CANADA: 1-800-361-6975 (QUEBEC) 1-800-387-6487 (ALL OTHER PROVINCES)		CAT. NO: YA28A-(SEE TABLE)	
FOR PRODUCT INFO: http://www.burndy.com		DRAWN BY: E.S.K 7/19/72	
		CHECKER: S.F.P 8/01/72	
		DSN APPVL: R.B 8/02/72	
		MFG APPVL: --	
		QA APPVL: D.VARIO 6/19/95	
		MKT APPVL: P.WERTHMAN 6/19/95	
		SCALE: 1:1	
		PROD FAM: CM&R COMPRESSION	
		DRAWING NO: SD073935	
		REV: BC	
		PROJECT #: --	
		SIZE: C	
		DOCUMENT TYPE: Sales	
		REL LEVEL: Released	
		SHEET 9 OF 24	

REV: PE0200

D
C
B
A

D
C
B
A

4 3 2 1

DRAWING NO.
SD073935

CATALOG NUMBER	CONDUCTOR SIZE		CONNECTOR DIMENSIONS - LINEAR MEASUREMENT IN, [mm]											INFORMATION	BARREL LETTERING INFORMATION
	ALUMINUM	COPPER	STUD SIZE	NO. OF HOLES	B	C	D	E	Ø K	L	N	O.D	(T)		
YA29A1	250 Kcmil - (127mm ²) CLASS B CONCENTRIC COMPRESSED COMPACT SIW	250 Kcmil - (127mm ²) CLASS B,C CONCENTRIC COMPRESSED COMPACT	1/2	1	1.45 [37]	1.26 [32]	1.36 [35]	--	.56 [14]	3.53 [90]	.63 [16]	.92 [37]	.33 [8]	TIN	FIG. 2
YA29A2			1/2	1	1.45 [37]	1.26 [32]	3.11 [79]	1.75 [44]	.56 [14]	5.28 [134]	.63 [16]		.33 [8]	NONE	FIG. 1
YA29A3			3/8	2	1.45 [37]	1.26 [32]	1.89 [48]	1.00 [25]	.44 [11]	4.06 [103]	.44 [11]		.33 [8]	TIN	FIG. 2
YA29A4			3/8	2	1.45 [37]	1.26 [32]	1.89 [48]	1.00 [25]	.44 [11]	4.06 [103]	.44 [11]		.33 [8]	NONE	FIG. 1
YA29A5			5/8	1	1.45 [37]	1.26 [32]	1.52 [39]	--	.69 [18]	3.69 [94]	.75 [19]		.33 [8]	TIN	FIG. 2
YA29A6			5/8	1	1.45 [37]	1.26 [32]	1.52 [39]	--	.69 [18]	3.69 [94]	.75 [19]		.33 [8]	NONE	FIG. 1

REV	DATE	DESCRIPTION	ECO	BY	C'H'K.
BC	2020-12-15 23:00:00 EST	NOTE ADDED IN SHEET #14, 15 AND 16	201211003133	DD	MA

COLOR CODE	BURNDY® INSTALLATION TOOLING (#CRIMPS)										DIELESS (#CRIMPS)		STRIP LENGTH
	DIE INFORMATION		MECHANICAL		HYDRAULIC						MECHANICAL	HYDRAULIC	
	DIE INDEX	TYPE	OUR840	MD6	10 Y34A Y34B	9 Y35, Y39 Y750 PAT750	9 Y46	9 Y45	Y48BH	Y60			
RED	324	RED DIE SET	--	--	A29AR (2)	U29ART (2)	U29ART (2)	U29ART (2)	C29AR (1)	L29ART (1)	--	Y81KFT (2) PAT81KFT (2) Y644 (1) PAT644 (1) Y444 (1) PAT444 (1)	1 5/8"
		NEST INDENTOR	--	--	A32D(1) B32D(1) Y34PR-5	--	P32D(1) P34PR-5	--	--	--	--		

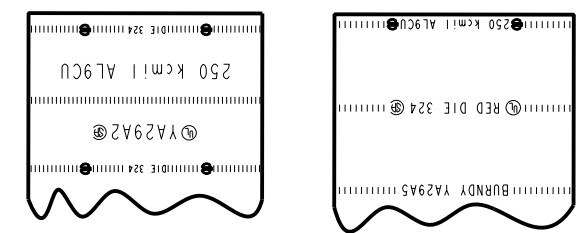
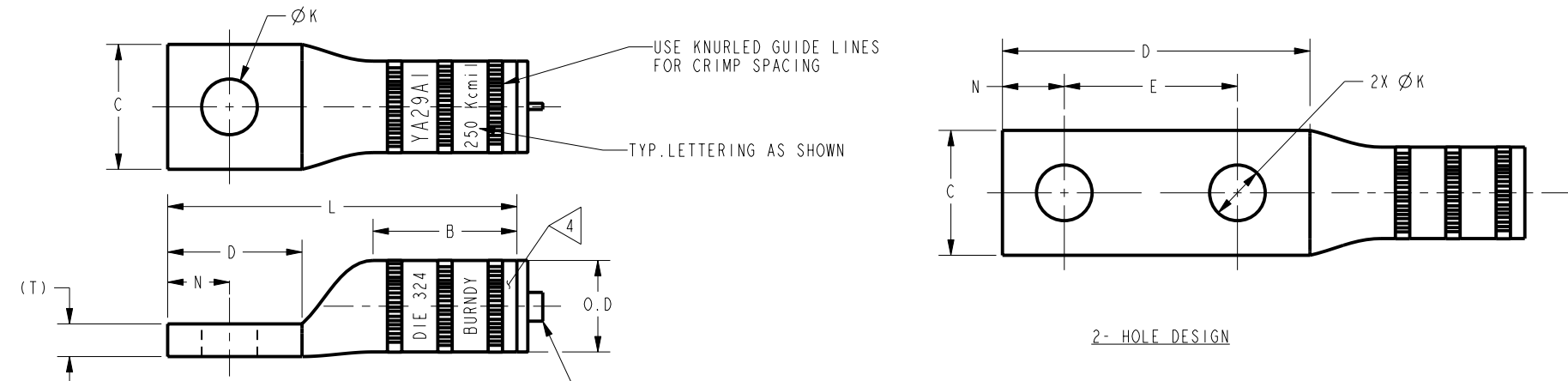


FIG. 1
FIG. 2
BARREL LETTERING VIEW



- NOTES:
- ALL HYLUGS™ ACCOMMODATE U.S. STANDARD WASHERS
 - REMOVE ALL EXCESS PENETROX™ FROM CONNECTOR AND ADJACENT CONDUCTOR PRIOR TO TAPING.
 - UL LISTED AND CSA CERTIFIED WIRE CONNECTORS, RATED 90 C (AL9CU) FOR USE WITH COPPER OR ALUMINUM CONDUCTOR. APPROVAL APPLY TO TIN PLATED CONNECTORS ONLY.
 - CONNECTOR BARRELS PREFILLED WITH PENETROX™
 - DIMENSIONS IN BRACKETS [] ARE IN MILLIMETERS ROUNDED OFF TO THE NEAREST MILLIMETER, UNLESS OTHERWISE NOTED, AND ARE FOR REFERENCE ONLY.
 - ADD SUFFIX "DT" TO ORDER LUGS WITH CRIMP BARREL SEALED AIR TIGHT INSIDE THE TRANSITION.
 - CATALOG #PT6515 ADAPTOR IS REQUIRED TO USE "U" DIES IN Y45 SERIES TOOLS.
 - CATALOG #PUADP-1 ADAPTOR IS REQUIRED TO USE "U" DIES IN Y46 SERIES TOOLS.
 - Y35P3 INDENTOR ADAPTOR REQUIRED FOR "Y34PR" TYPE INDENTORS.
 - FOR USE BY CUSTOMERS THAT HAVE THIS HYPRESS™. NO NEW HYPRESSES™ ARE BEING PROCESSED.
 - ADD SUFFIX "U" TO ORDER LUGS WITH UNDRILLED TONGUE.
 - ENLARGED BARREL MARKING VIEW.

TO ORDER BURNDY® PRODUCTS CALL		HYLUG™	
UNITED STATES: 1-800-346-4175 (LONDONDERRY, NH)		ITEM NO: NA	
CANADA: 1-800-361-6975 (QUEBEC) 1-800-387-6487 (ALL OTHER PROVINCES)		CAT. NO: YA29A-(SEE TABLE)	
FOR PRODUCT INFO: http://www.burndy.com		DRAWN BY: E.S.K 7/20/72	
		CHECKER: S.F.P 8/01/72	
		DSN APPVL: R.B 8/02/72	
		MFG APPVL: --	
		QA APPVL: D.VARIO 8/19/95	
		MKT APPVL: P.WERTHMAN 6/18/95	
		SCALE: 1:1	
		PROD FAM: CM&R COMPRESSION	
		DRAWING NO: SD073935	
		PROJECT #: --	
		SIZE: C	
		DOCUMENT TYPE: Sales	
		REV: BC	
		SHEET 10 OF 24	
		REV LEVEL: Released	

REV: PE0200

D
C
B
A

D
C
B
A

DRAWING NO.
SD073935

CATALOG NUMBER	CONDUCTOR SIZE		CONNECTOR DIMENSIONS-LINEAR MEASUREMENTS, [mm]											INFORMATION	BARREL LETTERING INFORMATION		
	ALUMINUM	COPPER	STUD SIZE	NO. OF HOLES	B	C	D	E	Ø K	L	N	O.D.	(T)			PLATING	
YA30A1	300 Kcmil- (152mm ²) CLASS B CONCENTRIC COMPRESSED COMPACT SIW	300 Kcmil- (152mm ²) CLASS B,C CONCENTRIC COMPRESSED COMPACT	1/2	1	1.53	1.38	1.37	--	.56	3.90	.63	1.01	.36	TIN	FIG. 2		
YA30A2					[39]	[35]	[35]	--	[14]	[99]	[16]			NONE	FIG. 1		
YA30A6			3/8	1	1.53	1.38	1.37	--	.44	3.90	.63	1.01	.36	TIN	FIG. 2		
YA30A3					[39]	[35]	[35]	--	[11]	[99]	[16]			NONE	FIG. 1		
YA30A4			4/0 AWG CCA DLO (329/22)	300 Kcmil- (152mm ²) CLASS B,C CONCENTRIC COMPRESSED COMPACT	1/2	2	1.53	1.38	3.11	1.75	.56	5.64	.63	1.01	.36	TIN	FIG. 2
YA30A5							[39]	[35]	[79]	[44]	[14]	[143]	[16]			NONE	FIG. 1
YA30A9NT100	5/16	1	1.53	1.38	1.89	1.00	.44	4.42	.44	1.01	.36	TIN	FIG. 2				
			[39]	[25]	[35]	--	[10]	[99]	[16]			NONE	FIG. 1				

REV	DATE	DESCRIPTION	ECO	BY	C'H'K.
BC	2020-12-15 23:00:00 EST	NOTE ADDED IN SHEET #14, 15 AND 16	201211003133	DD	MA

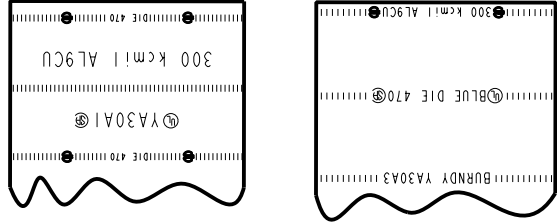
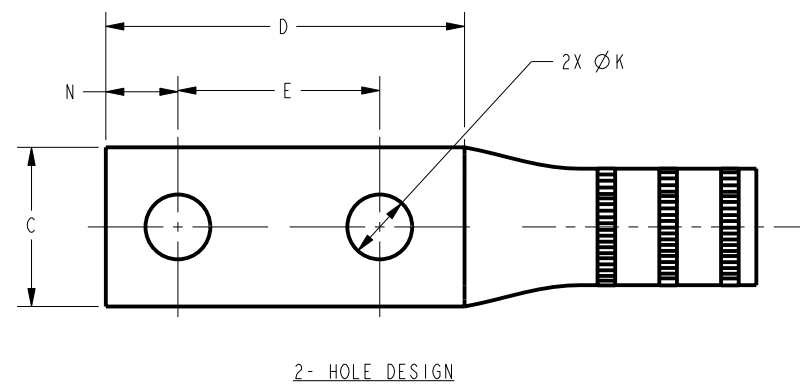
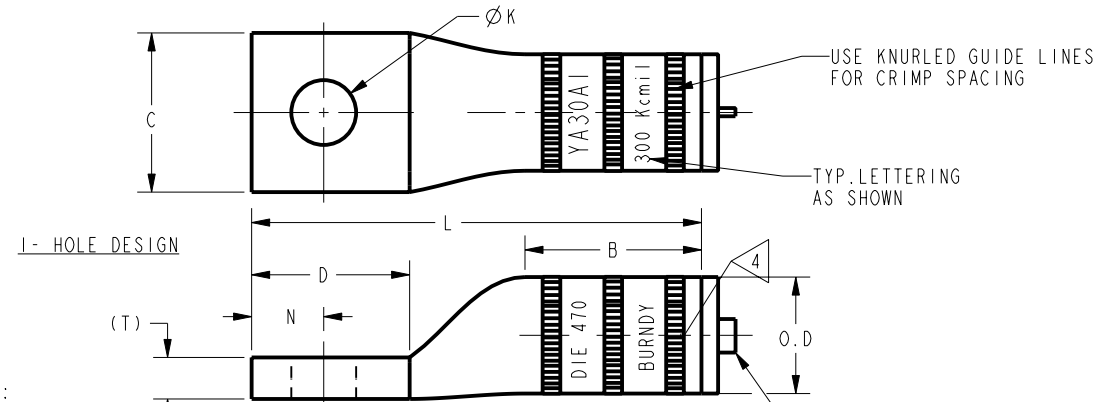


FIG. 1

FIG. 2

BARREL LETTERING VIEW

COLOR CODE	BURNDY® INSTALLATION TOOLING (#CRIMPS)										DIELESS (#CRIMPS)		STRIP LENGTH
	DIE INFORMATION		MECHANICAL		HYDRAULIC						MECHANICAL	HYDRAULIC	
DIE INDEX	TYPE	OUR840	MD6	Y34A Y34B	Y35, Y39 Y750 PAT750	Y46	Y45	Y48BH	Y60				
BLUE	470	BLUE DIE SET	--	--	A30AR (2)	U30ART (2)	U30ART (2)	U30ART (2)	C30AR (1)	L30ART (1)	--	Y81KFT (2) PAT81KFT (2) Y644 (1) PAT644 (1) Y444 (1) PAT444 (1)	1 3/4"
		NEST INDENTOR	--	--	A34D(1) Y34PR-11	--	P34D(1) P48PR-1	--	C34D(1) Y48PR-1	--	--		



NOTES:

- ALL HYLUGS™ ACCOMMODATE U.S. STANDARD WASHERS
- REMOVE ALL EXCESS PENETROX™ FROM CONNECTOR AND ADJACENT CONDUCTOR PRIOR TO TAPING.
- UL LISTED AND CSA CERTIFIED WIRE CONNECTORS. RATED 90 C (AL9CU) FOR USE WITH COPPER OR ALUMINUM CONDUCTOR. APPROVAL APPLY TO TIN PLATED CONNECTORS ONLY.
- CONNECTOR BARRELS PREFILLED WITH PENETROX™
- DIMENSIONS IN BRACKETS [] ARE IN MILLIMETERS ROUNDED OFF TO THE NEAREST MILLIMETER, UNLESS OTHERWISE NOTED, AND ARE FOR REFERENCE ONLY.
- ADD SUFFIX "DT" TO ORDER LUGS WITH CRIMP BARREL SEALED AIR TIGHT INSIDE THE TRANSITION.
- CATALOG #PT6515 ADAPTOR IS REQUIRED TO USE "U" DIES IN Y45 SERIES TOOLS.
- CATALOG #PUADP-1 ADAPTOR IS REQUIRED TO USE "U" DIES IN Y46 SERIES TOOLS.
- Y35P3 INDENTOR ADAPTOR REQUIRED FOR "Y34PR" TYPE INDENTORS.
- FOR USE BY CUSTOMERS THAT HAVE THIS HYPRESS™. NO NEW HYPRESSES™ ARE BEING PROCESSED.
- UL LISTED WITH DLO COPPER CLAD ALUMINUM CONDUCTOR USING Y644 AND Y444 TOOLS ONLY.
- ADD SUFFIX "U" TO ORDER LUGS WITH UNDRILLED TONGUE.
- ENLARGED BARREL MARKING VIEW.

UNINSULATED COMPRESSION TERMINAL
MATERIAL: ALUMINUM TUBE

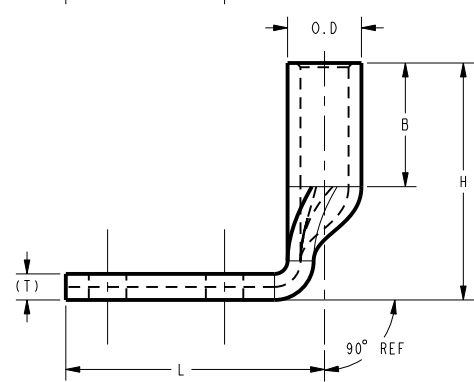
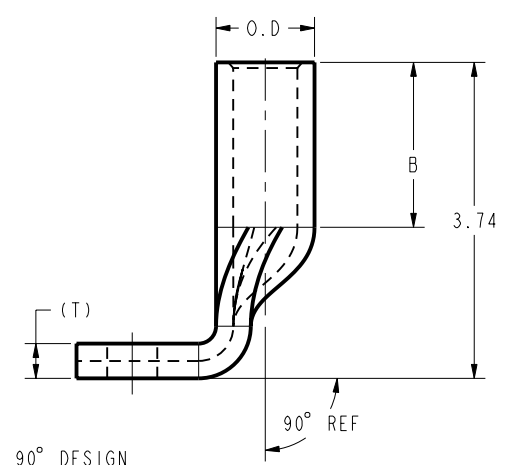
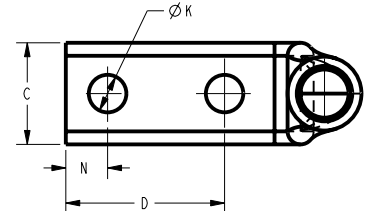
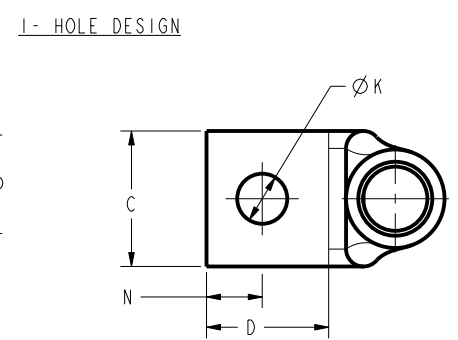
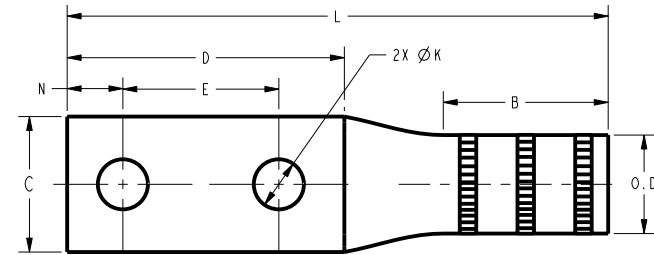
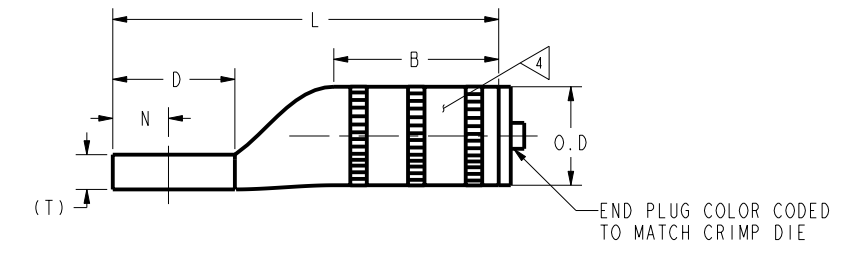
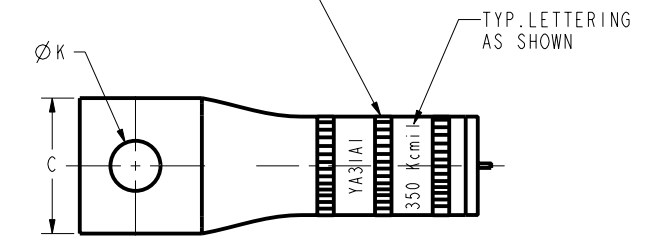
TO ORDER BURNDY® PRODUCTS CALL		HYLUG™	
UNITED STATES: 1-800-346-4175 (LONDONDERRY, NH)		ITEM NO: NA	
CANADA: 1-800-361-6975 (QUEBEC) 1-800-387-6487 (ALL OTHER PROVINCES)		CAT. NO: YA30A-(SEE TABLE)	
FOR PRODUCT INFO: http://www.burndy.com		DRAWN BY: E.S.K 7/20/72	
		CHECKER: S.F.P 8/01/72	
		DSN APPVL: R.B 8/02/72	
		MFG APPVL: --	
		QA APPVL: D.VARIO 8/19/95	
		MKT APPVL: P.WERTHMAN 6/18/95	
		SCALE: 1:1	
		PROD FAM: CM&R COMPRESSION	
		DRAWING NO	
		SD073935	
		REV	
		BC	
		SHEET 11 OF 24	

REV: PE0200

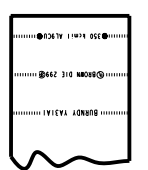
CATALOG NUMBER	CONDUCTOR SIZE		CONNECTOR DIMENSIONS-LINEAR MEASURE IN, [mm]											INFORMATION	BARREL LETTERING INFORMATION	
	ALUMINUM	COPPER	STUD SIZE	NO. OF HOLES	B	C	D	E	H	Ø K	L	N	O.D.			(T)
YA31A1			1/2	1	1.85 [47]	1.52 [39]	1.37 [35]	--	--	.56 [14]	4.33 [110]	.63 [16]		.39 [10]	TIN	FIG. 1
YA31A2			1/2	1	1.85 [47]	1.52 [39]	1.37 [35]	--	--	.56 [14]	4.33 [110]	.63 [16]		.39 [10]	NONE	FIG. 2
YA31A3			1/2	1	1.85 [47]	1.52 [39]	3.11 [79]	1.75 [44]	--	.56 [14]	6.07 [154]	.63 [16]		.39 [10]	TIN	FIG. 1
YA31A4			1/2	1	1.85 [47]	1.52 [39]	3.11 [79]	1.75 [44]	--	.56 [14]	6.07 [154]	.63 [16]		.39 [10]	NONE	FIG. 2
YA31A5	350 Kcmil- (177mm ²) CLASS B CONCENTRIC COMPRESSED COMPACT SIW	350 Kcmil- (177mm ²) CLASS B,C CONCENTRIC COMPRESSED COMPACT	3/8	2	1.85 [47]	1.52 [39]	1.89 [48]	1.00 [25]	--	.44 [11]	4.85 [123]	.44 [11]		.39 [10]	TIN	FIG. 1
YA31A5NT119			3/8	2	1.85 [47]	1.00 [25]	1.89 [48]	1.00 [25]	--	.44 [11]	4.85 [123]	.44 [11]		.39 [10]	TIN	FIG. 2
YA31A5NT100			3/8	2	1.85 [47]	1.00 [25]	1.89 [48]	1.00 [25]	--	.44 [11]	4.85 [123]	.44 [11]		.39 [10]	NONE	FIG. 2
YA31A6			3/8	2	1.85 [47]	1.00 [25]	1.89 [48]	--	--	.44 [11]	3.85 [98]	.44 [11]		.39 [10]	TIN	FIG. 1
YA31A9NT100	250 Kcmil CCA DLO (399/22)		3/8	1	1.85 [47]	1.00 [25]	1.89 [48]	--	--	.44 [11]	4.85 [123]	.44 [11]	1.11 [28]	.39 [10]	TIN	FIG. 2
YA31A12			5/8	1	1.85 [47]	1.52 [39]	1.37 [35]	--	--	.65 [17]	4.33 [110]	.63 [16]		.39 [10]	TIN	FIG. 1
YA31A190			1/2	1	1.85 [47]	1.52 [39]	1.37 [35]	--	3.74 [95]	.56 [14]	2.12 [54]	.63 [16]		.39 [10]	TIN	FIG. 1
YA31A390			1/2	2	1.85 [47]	1.52 [39]	3.11 [79]	1.75 [44]	3.74 [95]	.56 [14]	3.87 [98]	.63 [16]		.39 [10]	TIN	FIG. 2

REV	DATE	DESCRIPTION	ECO	BY	C'H'K.
BC	2020-12-15 23:00:00 EST	NOTE ADDED IN SHEET #14, 15 AND 16	201211003133	DD	MA

USE KNURLED GUIDE LINES FOR CRIMP SPACING



COLOR CODE	BURNDY® INSTALLATION TOOLING (#CRIMPS)										STRIP LENGTH		
	DIE INFORMATION		MECHANICAL		HYDRAULIC							DIELESS (#CRIMPS)	
	DIE INDEX	TYPE	OUR840	MD6	10 Y34A Y34B	9 Y35, Y39 Y750 PAT750	9 Y46	9 Y45	Y48BH	Y60		MECHANICAL	HYDRAULIC
BROWN	299	BROWN DIE SET	--	W31ART (4)	--	U31ART (2)	U31ART (2)	U31ART (2)	C31ART (1)	--	--	Y81KFT (3) PAT81KFT (3) Y644 (1) PAT644 (1) Y444 (1) PAT444 (1)	2 1/8"
		NEST INDENTOR	--	--	--	P35D(1) P48PR-1	--	C35D(1) Y48PR-1	--	--	--	--	



DEVELOPED LETTERING VIEWS

- NOTES:
- ALL HYLUGS™ ACCOMMODATE U.S. STANDARD WASHERS.
 - REMOVE ALL EXCESS PENETROX™ FROM CONNECTOR AND ADJACENT CONDUCTOR PRIOR TO TAPING.
 - UL LISTED AND CSA CERTIFIED WIRE CONNECTORS. RATED 90 C (AL9CU) FOR USE WITH COPPER OR ALUMINUM CONDUCTOR. APPROVAL APPLY TO TIN PLATED CONNECTORS ONLY.
 - CONNECTOR BARRELS PREFILLED WITH PENETROX™.
 - DIMENSIONS IN BRACKETS [] ARE IN MILLIMETERS ROUNDED OFF TO THE NEAREST MILLIMETER, UNLESS OTHERWISE NOTED, AND ARE FOR REFERENCE ONLY.
 - ADD SUFFIX "DT" TO ORDER LUGS WITH CRIMP BARREL SEALED AIR TIGHT INSIDE THE TRANSITION.
 - CATALOG #PT6515 ADAPTOR IS REQUIRED TO USE "U" DIES IN Y45 SERIES TOOLS.
 - CATALOG #PUADP-1 ADAPTOR IS REQUIRED TO USE "U" DIES IN Y46 SERIES TOOLS.
 - Y35P3 INDENTOR ADAPTOR REQUIRED FOR "Y34PR" TYPE INDENTORS.
 - FOR USE BY CUSTOMERS THAT HAVE THIS HYPRESS™. NO NEW HYPRESSES™ ARE BEING PROCESSED.
 - UL LISTED WITH DLO COPPER CLAD ALUMINUM CONDUCTOR USING Y644 AND Y444 TOOLS ONLY.
 - ADD SUFFIX "U" TO ORDER LUGS WITH UNDRILLED TONGUE.
 - ENLARGED BARREL MARKING VIEWS.

TO ORDER BURNDY® PRODUCTS CALL
 UNITED STATES
 1-800-346-4175 (LONDONDERRY, NH)
 CANADA:
 1-800-361-6975 (QUEBEC)
 1-800-387-6487 (ALL OTHER PROVINCES)
 FOR PRODUCT INFO: <http://www.burndy.com>

HYLUG™	
ITEM NO:	N/A
CAT. NO:	YA31A-(SEE TABLE)
DRAWN BY:	E.S.K 7/21/72
CHECKER:	S.F.P 8/01/72
DSN APPVL:	R.B 8/02/72
MFG APPVL:	--
QA APPVL:	D.VARIO 6/18/95
MKT APPVL:	P.WERTHMAN 6/18/95
PROD FAM:	CM&R COMPRESSION
PROJECT #:	--
DOCUMENT TYPE:	Sales
REL LEVEL:	Released



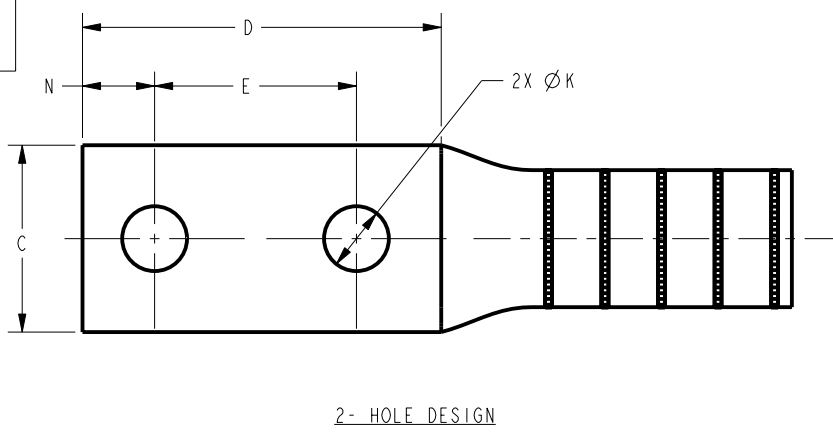
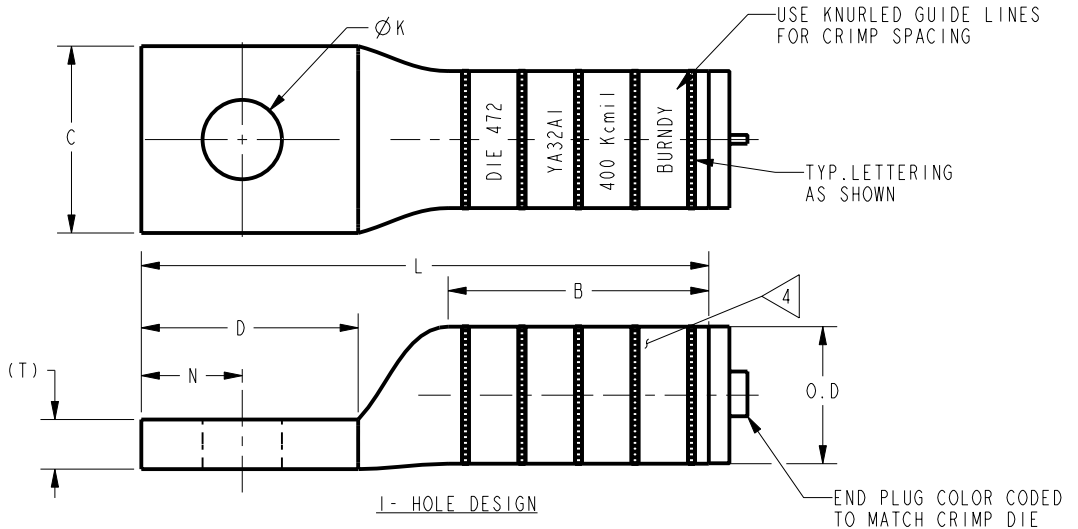
SCALE:	DRAWING NO.	REV.
1:1	SD073935	BC
	SHEET 12 OF 24	

REV: PEO200

DRAWING NO. SD073935		4		3										2		1	
CATALOG NUMBER	CONDUCTOR SIZE		CONNECTOR DIMENSIONS-LINEAR MEASURE IN, [mm] <5										INFORMATION				
	ALUMINUM	COPPER	STUD SIZE	NO. OF HOLES	B	C	D	E	Ø K	L	N	O.D.	(T)	PLATING			
YA32A1 YA32A2	400 kcmil- (203mm ²) CLASS B CONCENTRIC COMPRESSED COMPACT S1W	400 kcmil- (203mm ²) CLASS B,C CONCENTRIC COMPRESSED COMPACT	5/8	1	2.26 [57]	1.62 [41]	1.88 [48]	--	.69 [18]	4.92 [125]	.88 [22]		.43 [11]	TIN <3 NONE			
YA32A6			1/2	1	2.26 [57]	1.62 [41]	1.88 [48]	--	.56 [14]	4.92 [125]	.88 [22]			.43 [11]	TIN <3 NONE		
YA32A3			1/2	2	2.26 [57]	1.62 [41]	3.11 [79]	1.75 [44]	.56 [14]	6.15 [156]	.63 [16]	1.19 [30]		.43 [11]	TIN <3 NONE		
YA32A4			1/2	2	2.26 [57]	1.62 [41]	3.11 [79]	1.75 [44]	.56 [14]	6.15 [156]	.63 [16]	1.19 [30]		.43 [11]	TIN <3 NONE		
YA32A5			3/8	2	2.26 [57]	1.62 [41]	1.89 [48]	1.00 [25]	.44 [11]	4.93 [125]	.44 [11]			.43 [11]	TIN <3		
YA32A7			3/8	2	2.64 [67]	1.75 [44]	1.75 [44]			5.68 [144]							

REV	DATE	DESCRIPTION	ECO	BY	C'H'K.
BC	2020-12-15 23:00:00 EST	NOTE ADDED IN SHEET #14, 15 AND 16	201211003133	DD	MA

COLOR CODE	BURNDY® INSTALLATION TOOLING (#CRIMPS)										DIELESS (#CRIMPS)		STRIP LENGTH
	DIE INFORMATION		MECHANICAL		HYDRAULIC						MECHANICAL	HYDRAULIC	
	DIE INDEX	TYPE	OUR840	MD6	Y34A Y34B	Y35, Y39 Y750 PAT750	Y46	Y45	Y48BH	Y60			
GREEN	472	GREEN DIE SET NEST INDENTOR	--	--	--	U32ART (4)	U32ART (4)	U32ART (4)	C32AR (2)	L32ART (2)	--	Y81KFT (4) PAT81KFT (4) Y644 (1) PAT644 (1) Y444 (1) PAT444 (1)	2 1/2"



- NOTES:
- ALL HYLUGS™ ACCOMMODATE U.S. STANDARD WASHERS
 - REMOVE ALL EXCESS PENETROX™ FROM CONNECTOR AND ADJACENT CONDUCTOR PRIOR TO TAPING.
 - UL LISTED AND CSA CERTIFIED WIRE CONNECTORS. RATED 90 C (AL9CU) FOR USE WITH COPPER OR ALUMINUM CONDUCTOR. APPROVAL APPLY TO TIN PLATED CONNECTORS ONLY.
 - CONNECTOR BARRELS PREFILLED WITH PENETROX™
 - DIMENSIONS IN BRACKETS [] ARE IN MILLIMETERS ROUNDED OFF TO THE NEAREST MILLIMETER, UNLESS OTHERWISE NOTED, AND ARE FOR REFERENCE ONLY.
 - ADD SUFFIX "DT" TO ORDER LUGS WITH CRIMP BARREL SEALED AIR TIGHT INSIDE THE TRANSITION.
 - CATALOG #PT6515 ADAPTOR IS REQUIRED TO USE "U" DIES IN Y45 SERIES TOOLS.
 - CATALOG #PUADP-1 ADAPTOR IS REQUIRED TO USE "U" DIES IN Y46 SERIES TOOLS.
 - Y35P3 INDENTOR ADAPTOR REQUIRED FOR "Y34PR" TYPE INDENTORS.
 - FOR USE BY CUSTOMERS THAT HAVE THIS HYPRESS™. NO NEW HYPRESSES™ ARE BEING PROCESSED.
 - ADD SUFFIX "U" TO ORDER LUGS WITH UNDRILLED TONGUE.

UNINSULATED COMPRESSION TERMINAL
MATERIAL: ALUMINUM TUBE

TO ORDER BURNDY® PRODUCTS CALL		HYLUG™	
UNITED STATES: 1-800-346-4175 (LONDONDERRY, NH)		ITEM NO: NA	
CANADA: 1-800-361-6975 (QUEBEC) 1-800-387-6487 (ALL OTHER PROVINCES)		CAT. NO: YA32A-(SEE TABLE)	
FOR PRODUCT INFO: http://www.burndy.com		DRAWN BY: E.S.K 7/21/72	
		CHECKER: S.F.P 8/01/72	
		DSN APPVL: R.B 8/02/72	
		MFG APPVL: --	
		QA APPVL: D.VARIO 6/18/95	
		MKT APPVL: P.WERTHMAN 6/18/95	
		SCALE: 1:1	
		PROD FAM: CM&R COMPRESSION	
		DRAWING NO	
		SD073935	
		REV	
		BC	
		SHEET 13 OF 24	

REV: PE0200

DRAWING NO.
SD073935

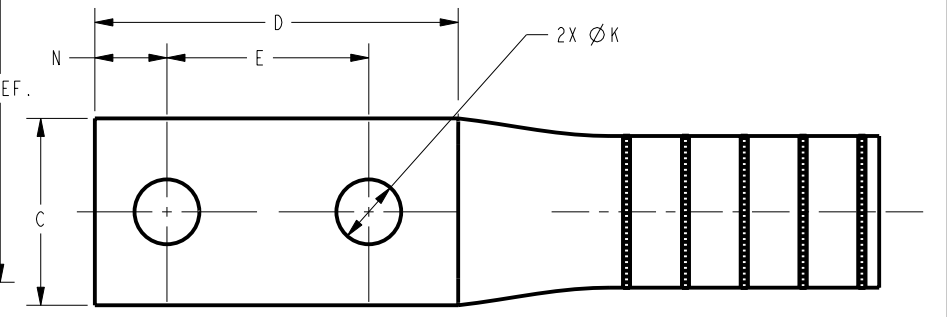
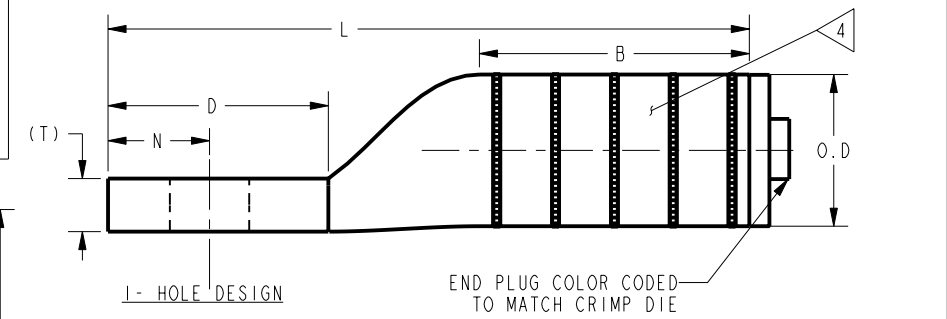
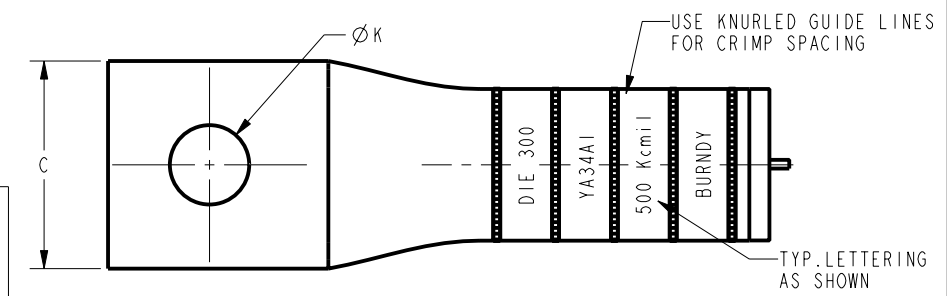
CATALOG NUMBER	CONDUCTOR SIZE		CONNECTOR DIMENSIONS-LINEAR MEASURE IN, [mm]												INFORMATION		
	ALUMINUM	COPPER	STUD SIZE	NO. OF HOLES	B	C	D	E	H	Ø K	L	N	O.D.	(T)		PLATING	
YA34A1	500 kcmil- (253mm ²) CLASS B CONCENTRIC COMPRESSED COMPACT SIW	500 kcmil- (253mm ²) CLASS B,C CONCENTRIC COMPRESSED COMPACT	5/8	1	2.34 [59]	1.80 [46]	1.91 [49]	--	--	.69 [18]	5.56 [141]	.88 [22]	1.32 [34]	.46 [12]	TIN		
YA34A2			5/8	1	2.34 [59]	1.80 [46]	1.37 [35]	--	--	.56 [14]	5.02 [128]	.63 [16]		.46 [12]	NONE		
YA34A7			1/2	1	2.34 [59]	1.80 [46]	1.37 [35]	--	--	.56 [14]	5.02 [128]	.63 [16]		.46 [12]	TIN		
YA34A3			1/2	2	2.34 [59]	1.62 [41]	3.15 [80]	1.75 [44]	--	--	.56 [14]	6.80 [173]		.63 [16]	.46 [12]	TIN	
YA34A4			1/2	2	2.34 [59]	1.62 [41]	3.15 [80]	1.75 [44]	--	--	.56 [14]	6.80 [173]		.63 [16]	.46 [12]	NONE	
YA34A5			3/8	2	2.34 [59]	1.80 [46]	1.89 [48]	1.00 [25]	--	--	.44 [11]	5.54 [141]		.44 [11]	.46 [12]	TIN	
YA34A11			3/8	2	2.34 [59]	1.80 [46]	2.27 [58]	1.38 [35]	--	--	.44 [11]	5.92 [150]		.44 [11]	.46 [12]	TIN	
YA34A6			1/2	2	2.34 [59]	1.80 [46]	3.15 [80]	1.75 [44]	--	--	.56 [14]	6.80 [173]		.63 [16]	.46 [12]	NONE	
YA34A9			350 Kcmil CCA DLO (551/22)		3/8	1	2.34 [59]	1.80 [46]	1.18 [48]	--	--	.44 [11]		4.83 [115]	.44 [11]	.46 [12]	TIN
YA34A390					1/2	2	2.34 [59]	1.62 [41]	3.15 [80]	1.75 [44]	4.59 [117]	.56 [14]		4.09 [104]	.63 [16]	.46 [12]	TIN
YA34A8			1/2	2	2.34 [59]	1.80 [46]	3.15 [80]	1.75 [44]	--	.56 [14]	6.77 [172]	.63 [16]	.46 [12]	TIN			
YA34A10			3/8	2	2.34 [59]	1.80 [46]	2.64 [67]	1.75 [44]	--	.44 [11]	6.29 [160]	.44 [11]	.46 [12]	NONE			

REV	DATE	DESCRIPTION	ECO	BY	C'H'K.
BC	2020-12-15 23:00:00 EST	NOTE ADDED IN SHEET #14, 15 AND 16	201211003133	DD	MA

COLOR CODE	BURNDY® INSTALLATION TOOLING (#CRIMPS)										DIELESS (#CRIMPS)		STRIP LENGTH
	DIE INFORMATION		MECHANICAL		HYDRAULIC						MECHANICAL	HYDRAULIC	
	DIE INDEX	TYPE	OUR840	MD6	Y34A Y34B	Y35, Y39 Y750 PAT750	Y46	Y45	Y48BH	Y60			
PINK	300	PINK DIE SET	--	--	--	U34ART (4)	U34ART (4)	U34ART (4)	C34AR (2)	L34ART (2)	--	Y81KFT (4) PAT81KFT (4) Y644 (1) PAT644 (1) Y444 (1) PAT444 (1)	2 5/8"
		NEST INDENTOR	--	--	--	--	P39D (1) P48PR-1	--	C39D (1) Y48PR-1	--	--		

NOTES:

- ALL HYLUGS™ ACCOMMODATE U.S. STANDARD WASHERS
- REMOVE ALL EXCESS PENETROX™ FROM CONNECTOR AND ADJACENT CONDUCTOR PRIOR TO TAPING.
- UL LISTED AND CSA CERTIFIED WIRE CONNECTORS. RATED 90 C (AL9CU) FOR USE WITH COPPER OR ALUMINUM CONDUCTOR. APPROVAL APPLY TO TIN PLATED CONNECTORS ONLY.
- CONNECTOR BARRELS PREFILLED WITH PENETROX™
- DIMENSIONS IN BRACKETS [] ARE IN MILLIMETERS ROUNDED OFF TO THE NEAREST MILLIMETER, UNLESS OTHERWISE NOTED, AND ARE FOR REFERENCE ONLY.
- NO-OX-ID "A" COATED TO PREVENT FORMATION OF OXIDATION
- CAN BE MOUNTED SIDE BY SIDE ON 4-HOLE NEMA PAD.
- ADD SUFFIX "DT" TO ORDER LUGS WITH CRIMP BARREL SEALED AIR TIGHT INSIDE THE TRANSITION.
- CATALOG #PT6515 ADAPTOR IS REQUIRED TO USE "U" DIES IN Y45 SERIES TOOLS.
- CATALOG #PUADP-1 ADAPTOR IS REQUIRED TO USE "U" DIES IN Y46 SERIES TOOLS.
- Y35P3 INDENTOR ADAPTOR REQUIRED FOR "Y34PR" TYPE INDENTORS.
- FOR USE BY CUSTOMERS THAT HAVE THIS HYPRESS™. NO NEW HYPRESSES™ ARE BEING PROCESSED.
- UL LISTED WITH DLO COPPER CLAD ALUMINUM CONDUCTOR USING Y644 AND Y444 TOOLS ONLY.
- ADD SUFFIX "U" TO ORDER LUGS WITH UNDRILLED TONGUE.
- ROUND OR SQUARE SIDES ON MOUNTING PAD ACCEPTABLE



UNINSULATED COMPRESSION TERMINAL MATERIAL: ALUMINUM TUBE

TO ORDER BURNDY® PRODUCTS CALL		HYLUG™	
UNITED STATES: 1-800-346-4175 (LONDONDERRY, NH)		ITEM NO: NA	
CANADA: 1-800-361-6975 (QUEBEC) 1-800-387-6487 (ALL OTHER PROVINCES)		CAT. NO: YA34A-(SEE TABLE)	
FOR PRODUCT INFO: http://www.burndy.com		DRAWN BY: E.S.K 7/21/72	
		CHECKER: S.F.P 8/01/72	
		DSN APPVL: R.B 8/02/72	
		MFG APPVL: --	
		QA APPVL: D.VARIO 6/18/95	
		MKT APPVL: P.WERTHMAN 6/18/95	
		SCALE: 1:1	
		PROD FAM: CM&R COMPRESSION	
		DRAWING NO	
		SD073935	
		REV	
		BC	
		SHEET 14 OF 24	

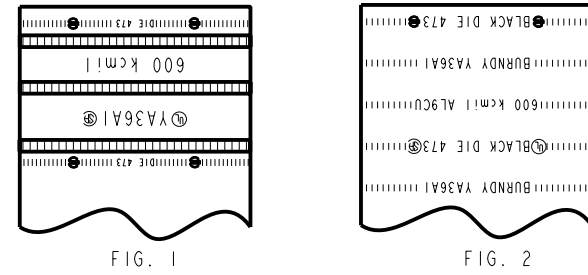
REV: PE0200



DRAWING NO.
SD073935

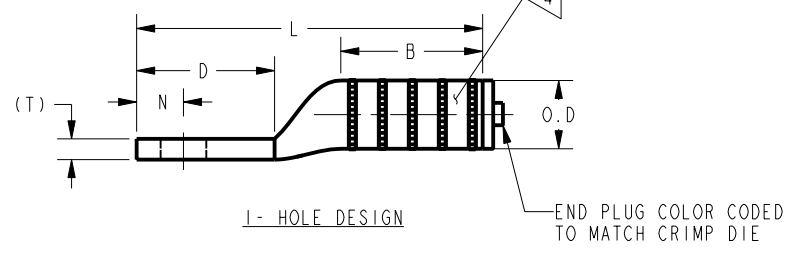
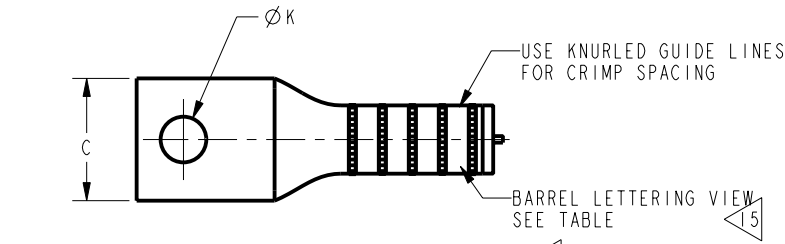
CATALOG NUMBER	CONDUCTOR SIZE		CONNECTOR DIMENSIONS-LINEAR MEASURE IN, [mm]											INFORMATION	BARREL LETTERING INFORMATION		
	ALUMINUM	COPPER	STUD SIZE	NO. OF HOLES	B	C	D	E	Ø K	L	N	O.D	(T)			PLATING	
YA36A1	600 kcmil- (304mm ²) CLASS B CONCENTRIC COMPRESSED COMPACT SIW	600 kcmil- (304mm ²) CLASS B,C CONCENTRIC COMPRESSED COMPACT	5/8	1	2.47	1.97	1.88	--	.69	5.82	.88	1.44 [37]	.52	TIN	FIG. 1		
YA36A2					[63]	[50]	[48]		[18]	[148]	[22]		[13]	NONE	FIG. 1		
YA36A3			1/2	2	2.47	1.62	3.15	1.75	.56	7.09	.63		.52	TIN	FIG. 2		
YA36A4					[63]	[41]	[80]	[44]	[14]	[180]	[16]		[13]	NONE	FIG. 1		
YA36A3NT13			1/2	2	2.47	1.31	3.15	1.75	.56	7.09	.63		.52	TIN	FIG. 1		
YA36A5					[63]	[33]	[80]	[44]	[14]	[180]	[16]		[13]	NONE	FIG. 1		
YA36A8			500 Kcmil CCA DLO (779/22)		1/2	1	2.47	1.97	1.89	1.00	.44		5.64	.69	.52	TIN	FIG. 1
YA36A10							[63]	[50]	[48]	[25]	[11]		[143]	[18]	[13]	NONE	FIG. 1
YA36A17					1/2	2	2.47	1.97	3.15	1.75	.56		7.06	.63	.52	TIN	FIG. 2
			[63]	[50]			[80]	[44]	[14]	[179]	[16]		[13]	NONE	FIG. 2		

REV	DATE	DESCRIPTION	ECO	BY	C'H'K.
BC	2020-12-15 23:00:00 EST	NOTE ADDED IN SHEET #14, 15 AND 16	201211003133	DD	MA

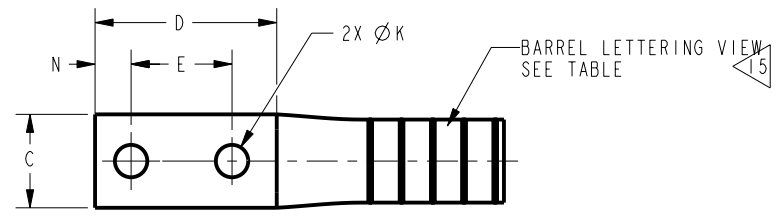


BARREL LETTERING VIEW

COLOR CODE	BURNDY® INSTALLATION TOOLING (#CRIMPS)										DIELESS (#CRIMPS)		STRIP LENGTH
	DIE INFORMATION		MECHANICAL				HYDRAULIC				MECHANICAL	HYDRAULIC	
	DIE INDEX	TYPE	OUR840	MD6	Y34A Y34B	Y35, Y39 Y750 PAT750	Y46	Y45	Y48BH	Y60			
BLACK	473	BLACK DIE SET	--	--	--	U36ART (4)	U36ART (4)	U36ART (4)	C36AR (2)	L36ART (2)	--	Y81KFT (4) PAT81KFT (4) Y644 (1) PAT644 (1) Y444 (1) PAT444 (1)	2 7/8"
		NEST INDENTOR	--	--	--	--	P44D(2) P48PR-1	--	C44D(2) Y48PR-1	--	--		



1- HOLE DESIGN



2- HOLE DESIGN

UNINSULATED COMPRESSION TERMINAL
MATERIAL: ALUMINUM TUBE

NOTES:

- ALL HYLUGS™ ACCOMMODATE U.S. STANDARD WASHERS
- REMOVE ALL EXCESS PENETROX™ FROM CONNECTOR AND ADJACENT CONDUCTOR PRIOR TO TAPING.
- UL LISTED AND CSA CERTIFIED WIRE CONNECTORS, RATED 90 C (AL9CU) FOR USE WITH COPPER OR ALUMINUM CONDUCTOR. APPROVAL APPLY TO TIN PLATED CONNECTORS ONLY.
- CONNECTOR BARRELS PREFILLED WITH PENETROX™
- DIMENSIONS IN BRACKETS [] ARE IN MILLIMETERS ROUNDED OFF TO THE NEAREST MILLIMETER, UNLESS OTHERWISE NOTED, AND ARE FOR REFERENCE ONLY.
- CAN BE MOUNTED SIDE BY SIDE ON FOUR HOLE NEMA PAD
- THE YA39A12 IS NOT UL LISTED OR CSA CERTIFIED
- ADD SUFFIX "DT" TO ORDER LUGS WITH CRIMP BARREL SEALED AIR TIGHT INSIDE THE TRANSITION.
- CATALOG #PT6515 ADAPTOR IS REQUIRED TO USE "U" DIES IN Y45 SERIES TOOLS.
- CATALOG #PUADP-1 ADAPTOR IS REQUIRED TO USE "U" DIES IN Y46 SERIES TOOLS.
- Y35P3 INDENTOR ADAPTOR REQUIRED FOR "Y34PR" TYPE INDENTORS.
- FOR USE BY CUSTOMERS THAT HAVE THIS HYPRESS™. NO NEW HYPRESSES™ ARE BEING PROCESSED.
- UL LISTED WITH DLO COPPER CLAD ALUMINUM CONDUCTOR USING Y644 AND Y444 TOOLS ONLY.
- ADD SUFFIX "U" TO ORDER LUGS WITH UNDRILLED TONGUE.
- ENLARGED BARREL MARKING VIEW.
- ROUND OR SQUARE SIDES ON MOUNTING PAD ACCEPTABLE

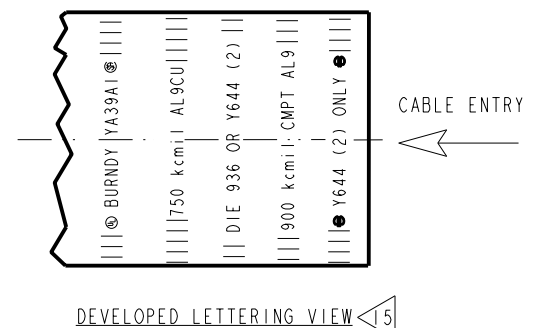
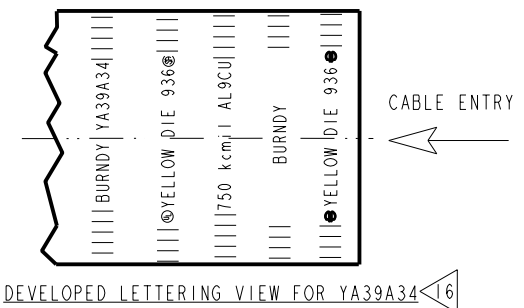
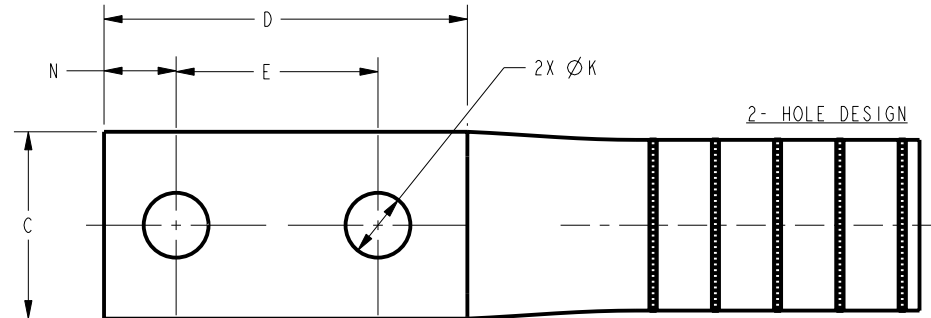
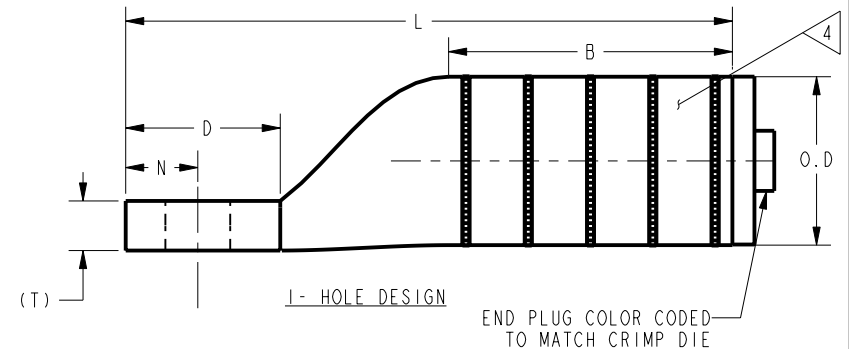
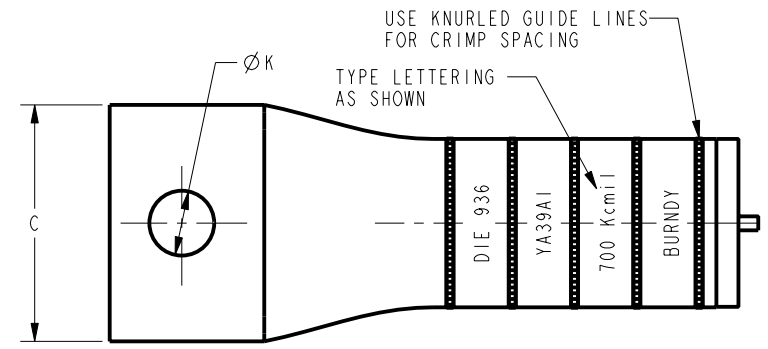
TO ORDER BURNDY® PRODUCTS CALL		HYLUG™	
UNITED STATES: 1-800-346-4175 (LONDONDERRY, NH)		ITEM NO: NA	
CANADA: 1-800-361-6975 (QUEBEC) 1-800-387-6487 (ALL OTHER PROVINCES)		CAT. NO: YA36A-(SEE TABLE)	
FOR PRODUCT INFO: http://www.burndy.com		DRAWN BY: E.S.K 7/21/72	
		CHECKER: S.F.P 8/01/72	
		DSN APPVL: R.B 8/02/72	
		MFG APPVL: --	
		QA APPVL: D.VARIO 6/18/95	
		MKT APPVL: P.WERTHMAN 6/18/95	
		SCALE: 1:1	
		PROD FAM: CM&R COMPRESSION	
		DRAWING NO: SD073935	
		REV: BC	
		PROJECT #: --	
		SIZE: C	
		DOCUMENT TYPE: Sales	
		REL LEVEL: Released	
		SHEET 15 OF 24	

REV: PE0200

CATALOG NUMBER	CONDUCTOR SIZE		CONNECTOR DIMENSIONS-LINEAR MEASURE IN, [mm]											INFORMATION		
	ALUMINUM	COPPER	STUD SIZE	NO. OF HOLES	B	C	D	E	Ø K	L	N	O.D	(T)		PLATING	
YA39A1	700 -750 kcmil - (355-380mm ²) CLASS B CONCENTRIC COMPRESSED COMPACT SIW	700 -750 kcmil - (355-380mm ²) CLASS B, C CONCENTRIC COMPRESSED COMPACT	1/2	1	2.46 [62]	2.05 [52]	1.34 [34]	--	.56 [14]	5.26 [134]	.63 [16]	1.46 [37]	.43 [11]	TIN		
YA39A2			5/8	1	2.46 [62]	2.05 [52]	1.88 [48]	--	.69 [18]	5.80 [147]	.88 [22]		.43 [11]	NONE		
YA39A3			900 kcmil CLASS B COMPACT ONLY	700 -750 kcmil - (355-380mm ²) CLASS B, C CONCENTRIC COMPRESSED COMPACT	1/2	2	2.46 [62]	1.62 [41]	3.15 [80]	1.75 [44]	.56 [14]	7.07 [180]	.63 [16]	1.46 [37]	.43 [11]	TIN
YA39A4					3/8	2	2.46 [62]	2.05 [52]	1.89 [48]	1.00 [25]	.44 [11]	5.81 [148]	.44 [11]		.43 [11]	NONE
YA39A5					1/2	2	2.46 [62]	1.62 [41]	6.33 [161]	1.75 [44]	.56 [14]	10.25 [260]	.63 [16]	1.46 [37]	.43 [11]	TIN
YA39A6			600 Kcmil CCA DLO (925/22)	700 -750 kcmil - (355-380mm ²) CLASS B, C CONCENTRIC COMPRESSED COMPACT	1/2	2	2.46 [62]	2.05 [52]	3.15 [80]	1.75 [44]	.56 [14]	7.04 [179]	.63 [16]	1.46 [37]	.43 [11]	TIN
YA39A7	3/4	1			2.46 [62]	2.05 [52]	2.19 [56]	--	.81 [21]	6.17 [157]	1.00 [25]	1.46 [37]	.43 [11]		TIN	

REV	DATE	DESCRIPTION	EC	BY	C'H'K.
BC	2020-12-15 23:00:00 EST	NOTE ADDED IN SHEET #14, 15 AND 16	201211003133	DD	MA

COLOR CODE	BURNDY® INSTALLATION TOOLING (#CRIMPS)										DIELESS (#CRIMPS)		STRIP LENGTH
	DIE INFORMATION		MECHANICAL		HYDRAULIC						MECHANICAL	HYDRAULIC	
	DIE INDEX	TYPE	OUR840	MD6	Y34A Y34B	Y35, Y39 Y750 PAT750	Y46	Y45	Y48BH	Y60			
YELLOW	936	YELLOW DIE SET	--	--	--	U39ART-2 (4)	U39ART-2 (4)	U39ART-2 (4)	--	L39ART-2 (2)	--	Y81KFT (4) PAT81KFT (4) Y644 (2) PAT644 (2) Y444 (2) PAT444 (2)	2 7/8"
		NEST INDENTOR	--	--	--	--	--	--	--	--	--		



NOTES:
 1. ALL HYLUGS™ ACCOMMODATE U.S. STANDARD WASHERS
 2. REMOVE ALL EXCESS PENETROX™ FROM CONNECTOR AND ADJACENT CONDUCTOR PRIOR TO TAPING.
 3. UL LISTED AND CSA CERTIFIED WIRE CONNECTORS. RATED 90 C (AL9CU) FOR USE WITH COPPER OR ALUMINUM CONDUCTOR. APPROVAL APPLY TO TIN PLATED CONNECTORS ONLY.
 4. CONNECTOR BARRELS PREFILLED WITH PENETROX™
 5. DIMENSIONS IN BRACKETS [] ARE IN MILLIMETERS ROUNDED OFF TO THE NEAREST MILLIMETER, UNLESS OTHERWISE NOTED, AND ARE FOR REFERENCE ONLY.
 6. CAN BE MOUNTED SIDE BY SIDE ON FOUR HOLE NEMA PAD
 7. THE YA39A12 IS NOT UL LISTED OR CSA CERTIFIED
 8. ADD SUFFIX "DT" TO ORDER LUGS WITH CRIMP BARREL SEALED AIR TIGHT INSIDE THE TRANSITION.
 9. CATALOG #PT6515 ADAPTOR IS REQUIRED TO USE "U" DIES IN Y45 SERIES TOOLS.
 10. CATALOG #PUADP-1 ADAPTOR IS REQUIRED TO USE "U" DIES IN Y46 SERIES TOOLS.
 11. Y35P3 INDENTOR ADAPTOR REQUIRED FOR "Y34PR" TYPE INDENTORS.
 12. FOR USE BY CUSTOMERS THAT HAVE THIS HYPRESSES™. NO NEW HYPRESSES™ ARE BEING PROCESSED.

- 13. USE PAT644, Y644, PAT444, OR Y444 TOOLING ONLY WHEN INSTALLING 900 KCMIL COMPACT AL APPLY 2 CRIMPS.
- 14. UL LISTED WITH DLO COPPER CLAD ALUMINUM CONDUCTOR USING Y644 TOOLS ONLY.
- 15. SEE DEVELOPED LETTERING VIEW FOR THESE CATALOGS.
- 16. SEE DEVELOPED LETTERING VIEW FOR YA39A34.
- 17. ADD SUFFIX "U" TO ORDER LUGS WITH UNDRILLED TONGUE.
- 18. ROUND OR SQUARE SIDES ON MOUNTING PAD ACCEPTABLE.

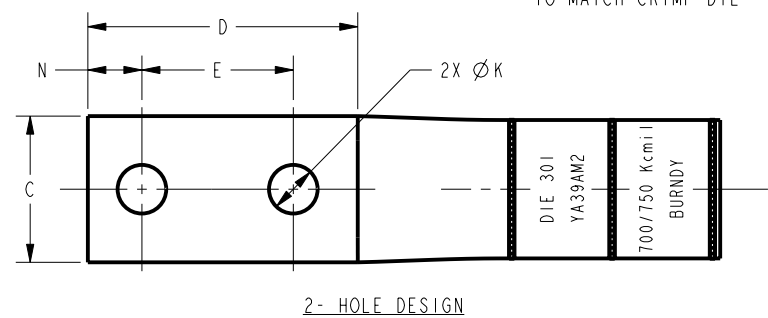
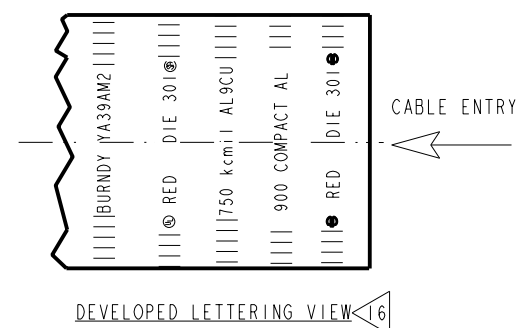
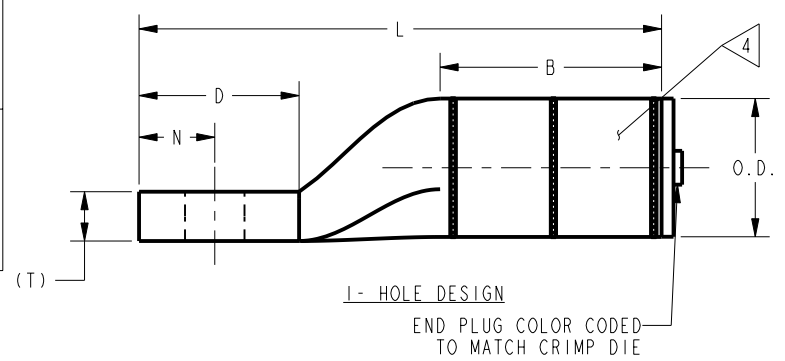
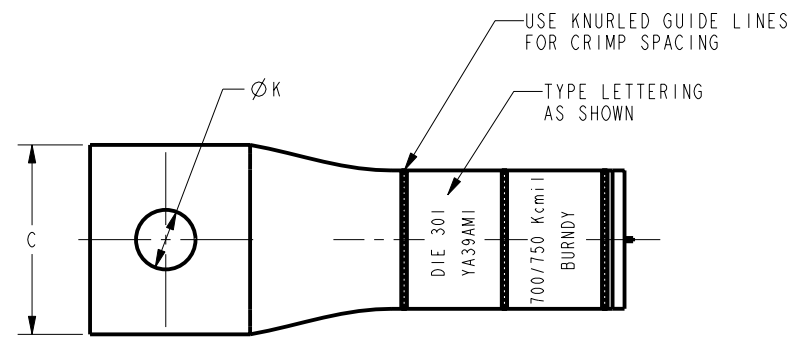
TO ORDER BURNDY® PRODUCTS CALL UNITED STATES: 1-800-346-4175 (LONDONDERRY, NH) CANADA: 1-800-361-6975 (QUEBEC) 1-800-387-6487 (ALL OTHER PROVINCES) FOR PRODUCT INFO: http://www.burndy.com		HYLUG™	
		ITEM NO: NA	CAT. NO: YA39A-(SEE TABLE)
DRAWN BY: E.S.K 7/21/72 CHECKER: S.F.P 8/01/72 DSN APPVL: R.B 8/02/72 MFG APPVL: -- QA APPVL: D.VARIO 6/18/95 MKT APPVL: P.WERTHMAN 6/18/95			
PROD FAM: CM&R COMPRESSION PROJECT #: -- DOCUMENT TYPE: Sales REL LEVEL: Released		SCALE: 2:1 DRAWING NO: SD073935 SHEET 16 OF 24	REV: BC

REV: PE0200

CATALOG NUMBER	CONDUCTOR SIZE		CONNECTOR DIMENSIONS-LINEAR MEASURE IN, [mm]											INFORMATION
	ALUMINUM	COPPER	STUD SIZE	NO. OF HOLES	B	C	D	E	Ø K	L	N	O.D	(T)	
YA39AM1	700 -750 kcmil - (355-380mm ²) CLASS B CONCENTRIC COMPRESSED	700 -750 kcmil - (355-380mm ²) CLASS B,C CONCENTRIC COMPRESSED COMPACT	5/8	1	2.56 [65]	2.19 [56]	1.85 [47]	--	.69 [18]	6.04 [153]	.88 [22]	1.60 [41]	.57 [14]	TIN
YA39AM2	140 COMPACT SIW		1/2	2	2.56 [65]	1.69 [43]	3.12 [79]	1.75 [44]	.56 [14]	7.31 [186]	.63 [16]	1.60 [41]	.57 [14]	TIN
YA39AM3	900 kcmil CLASS B COMPACT ONLY		1/2	2	2.56 [65]	1.69 [43]	3.88 [99]	1.75 [44]	.56 [14]	8.07 [205]	.63 [16]	1.60 [41]	.57 [14]	TIN

REV	DATE	DESCRIPTION	ECO	BY	C'H'K.
BC	2020-12-15 23:00:00 EST	NOTE ADDED IN SHEET #14, 15 AND 16	201211003133	DD	MA

COLOR CODE	DIE INFORMATION		BURNDY® INSTALLATION TOOLING (#CRIMPS)								DIELESS (#CRIMPS)		STRIP LENGTH		
	DIE INDEX	TYPE	MECHANICAL		HYDRAULIC				MECHANICAL		HYDRAULIC				
RED	301	RED DIESET	--	--	Y34A Y34B	Y35, Y39 Y750 PAT750	Y46	Y45	Y48BH	Y60	P39ART (4)	S39ART (4)	C39AR (4)	L39ART (4)	2 7/8"
		NEST INDENTOR	--	--	--	--	--	--	P45D(2) P48PR-1	--	C45D(2) Y48PR-1	--	--	Y81KFT (4) PAT81KFT (4) Y644 (1) PAT644 (1) Y444 (1) PAT444 (1)	



- NOTES:**
- ALL HYLUGS™ ACCOMMODATE U.S. STANDARD WASHERS
 - REMOVE ALL EXCESS PENETROX™ FROM CONNECTOR AND ADJACENT CONDUCTOR PRIOR TO TAPING.
 - UL LISTED AND CSA CERTIFIED WIRE CONNECTORS. RATED 90 C (AL9CU) FOR USE WITH COPPER OR ALUMINUM CONDUCTOR. APPROVAL APPLY TO TIN PLATED CONNECTORS ONLY.
 - CONNECTOR BARRELS PREFILLED WITH PENETROX™
 - DIMENSIONS IN BRACKETS [] ARE IN MILLIMETERS ROUNDED OFF TO THE NEAREST MILLIMETER, UNLESS OTHERWISE NOTED, AND ARE FOR REFERENCE ONLY.
 - CAN BE MOUNTED SIDE BY SIDE ON FOUR HOLE NEMA PAD
 - USE ONLY WHEN CUSTOMER REQUIRES 1.600 O.D VARIATION FOR COMPATABILITY WITH OLD INSTALATION TOOLING, FOR ALL OTHER APPLICATION USE C39-1 TUBING(1.460 O.D)
 - THE YA39A12 IS NOT UL LISTED OR CSA CERTIFIED
 - ADD SUFFIX "DT" TO ORDER LUGS WITH CRIMP BARREL SEALED AIR TIGHT INSIDE THE TRANSITION.
 - CATALOG #PT6515 ADAPTOR IS REQUIRED TO USE "U" DIES IN Y45 SERIES TOOLS.

- CATALOG #PUADP-1 ADAPTOR IS REQUIRED TO USE "U" DIES IN Y46 SERIES TOOLS.
- Y35P3 INDENTOR ADAPTOR REQUIRED FOR "Y34PR" TYPE INDENTORS.
- FOR USE BY CUSTOMERS THAT HAVE THIS HYPRESS™. NO NEW HYPRESSES™ ARE BEING PROCESSED.
- USE PAT644, Y644, PAT444, OR Y444 TOOLING ONLY WHEN INSTALLING 900 KCMIL COMPACT AL. APPLY 2 CRIMPS.
- ADD SUFFIX "U" TO ORDER LUGS WITH UNDRILLED TONGUE.
- SEE DEVELOPED LETTERING VIEW FOR CATALOGUE YA39AM2

TO ORDER BURNDY® PRODUCTS CALL UNITED STATES: 1-800-346-4175 (LONDONDERRY, NH) CANADA: 1-800-361-6975 (QUEBEC) 1-800-387-6487 (ALL OTHER PROVINCES) FOR PRODUCT INFO: http://www.burndy.com		HYLUG™ ITEM NO: NA CAT. NO: YA39A-(SEE TABLE) DRAWN BY: E.S.K 7/21/72 CHECKER: S.F.P 8/01/72 DSN APPVL: R.B 8/02/72 MFG APPVL: -- QA APPVL: D.VARIO 6/18/95 MKT APPVL: P.WERTHMAN 6/18/95 PROD FAM: CM&R COMPRESSION PROJECT #: -- DOCUMENT TYPE: Sales REL LEVEL: Released	
SCALE: 1:1 DRAWING NO: SD073935 SHEET 17 OF 24		BURNDY REV: BC	

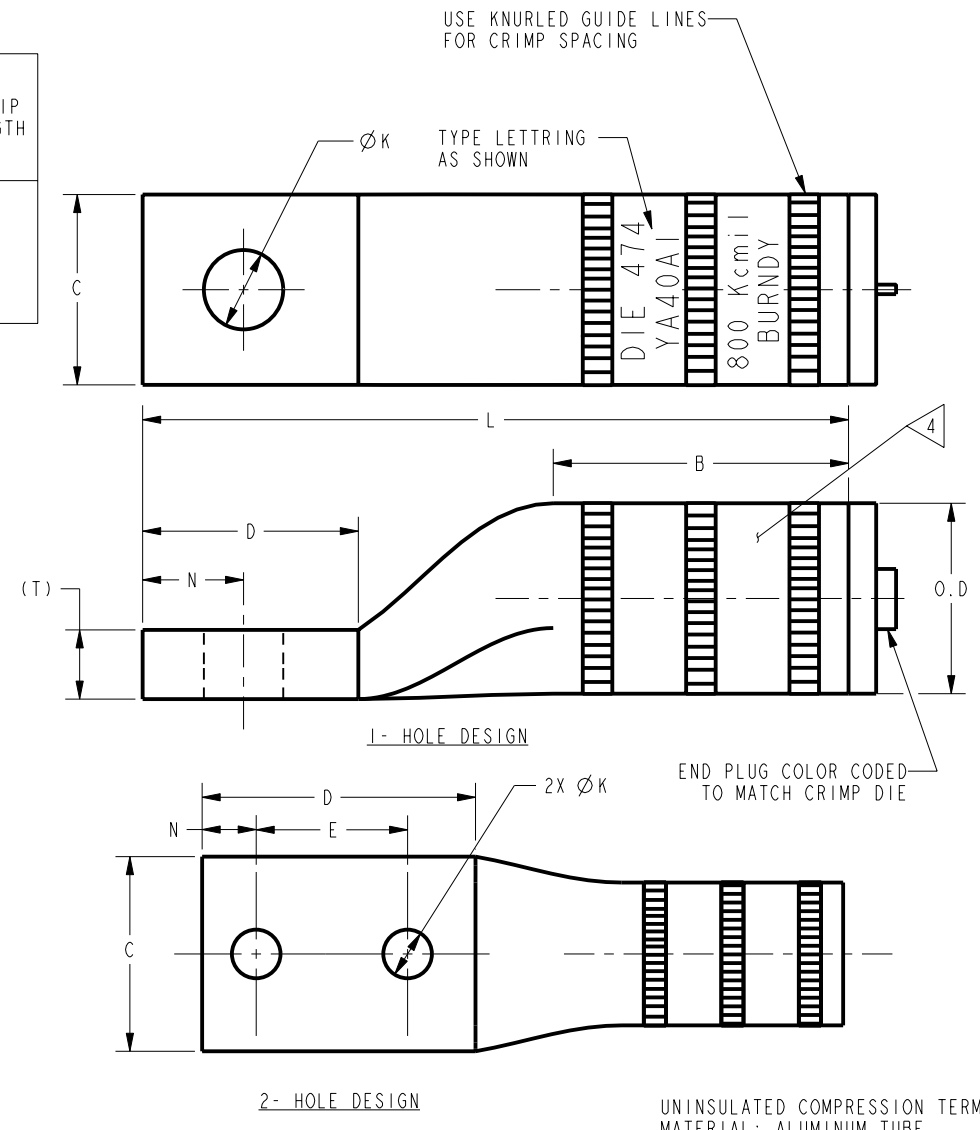
REV: PE0200

DRAWING NO. SD073935		4												3												2												1											
CATALOG NUMBER	CONDUCTOR SIZE		CONNECTOR DIMENSIONS-LINEAR MEASURE IN. [mm]												INFORMATION																																		
	ALUMINUM	COPPER	STUD SIZE	NO. OF HOLES	B	C	D	E	F	ϕ_K	L	N	O.D.	(T)		PLATING																																	
YA40A1	800 kcmil - (405mm ²) CLASS B CONCENTRIC COMPRESSED COMPACT SIW	800 kcmil - (405mm ²) CLASS B,C CONCENTRIC COMPRESSED COMPACT	5/8	1	2.56	1.65	1.87	--	--	.69	6.12	.88	1.65	[42]	TIN																																		
YA40A2					[65]	[42]	[47]	--	--	[18]	[155]	[22]			NONE																																		
YA40A3			1/2	2	2.56	2.25	3.16	1.75	--	.56	7.41	.63	[42]	[15]	TIN																																		
YA40A4							[65]	[57]	[80]	[44]	--	[14]			[188]	[16]	NONE																																

REV	DATE	DESCRIPTION	ECO	BY	C'H'K.
BC	2020-12-15 23:00:00 EST	NOTE ADDED IN SHEET #14, 15 AND 16	201211003133	DD	MA

COLOR CODE	BURNDY® INSTALLATION TOOLING (#CRIMPS)										DIELESS (#CRIMPS)		STRIP LENGTH
	DIE INFORMATION		MECHANICAL		HYDRAULIC						MECHANICAL	HYDRAULIC	
	DIE INDEX	TYPE	OUR840	MD6	Y34A Y34B	Y35, Y39 Y750 PAT750	Y46	Y45	Y48BH	Y60			
GRAY	474	GRAY DIE SET	--	--	--	--	P40ART (4)	S40ART (4)	C40AR (2)	L40ART (2)	--	Y644MBH (1) ONLY Y444 (1) PAT444 (1)	3"
		NEST INDENTOR	--	--	--	--	P45D(4) P48PR-1	--	C45D(2) Y48PR-1	--	--		

- NOTES:**
- ALL HYLUGS™ ACCOMMODATE U.S. STANDARD WASHERS
 - REMOVE ALL EXCESS PENETROX™ FROM CONNECTOR AND ADJACENT CONDUCTOR PRIOR TO TAPING.
 - UL LISTED AND CSA CERTIFIED WIRE CONNECTORS. RATED 90 C (AL9CU) FOR USE WITH COPPER OR ALUMINUM CONDUCTOR. APPROVAL APPLY TO TIN PLATED CONNECTORS ONLY.
 - CONNECTOR BARRELS PREFILLED WITH PENETROX™
 - DIMENSIONS IN BRACKETS [] ARE IN MILLIMETERS ROUNDED OFF TO THE NEAREST MILLIMETER, UNLESS OTHERWISE NOTED, AND ARE FOR REFERENCE ONLY.
 - ADD SUFFIX "DT" TO ORDER LUGS WITH CRIMP BARREL SEALED AIR TIGHT INSIDE THE TRANSITION.
 - CATALOG #PT6515 ADAPTOR IS REQUIRED TO USE "U" DIES IN Y45 SERIES TOOLS.
 - CATALOG #PUADP-1 ADAPTOR IS REQUIRED TO USE "U" DIES IN Y46 SERIES TOOLS.
 - Y35P3 INDENTOR ADAPTOR REQUIRED FOR "Y34PR" TYPE INDENTORS.
 - FOR USE BY CUSTOMERS THAT HAVE THIS HYPRESS™. NO NEW HYPRESSES™ ARE BEING PROCESSED.
 - ADD SUFFIX "U" TO ORDER LUGS WITH UNDRILLED TONGUE.



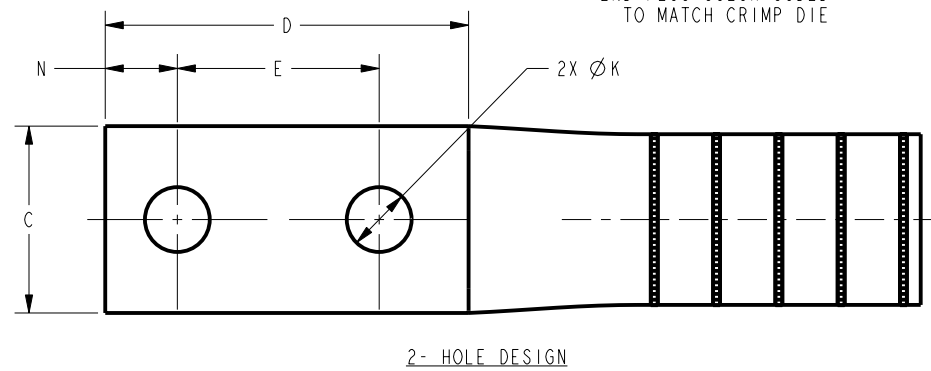
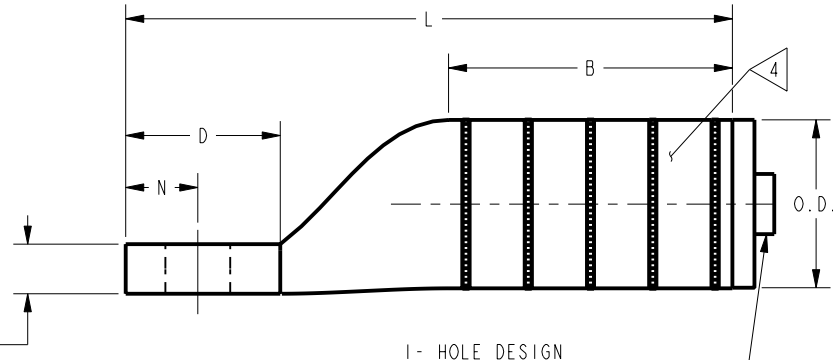
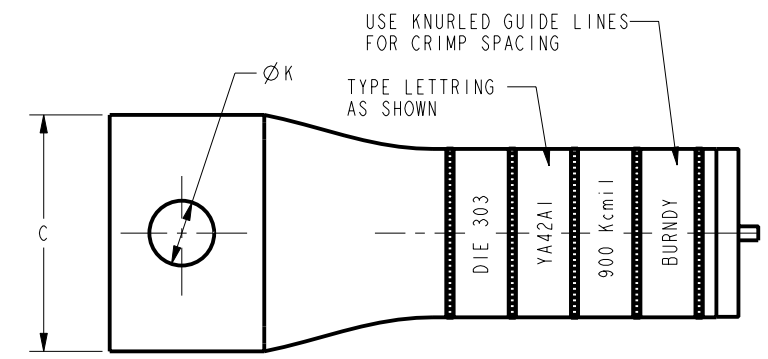
TO ORDER BURNDY® PRODUCTS CALL		HYLUG™	
UNITED STATES: 1-800-346-4175 (LONDONDERRY, NH)		ITEM NO: NA	CAT. NO: YA40A-8YA44A-(SEE TABLE)
CANADA: 1-800-361-6975 (QUEBEC) 1-800-387-6487 (ALL OTHER PROVINCES)		DRAWN BY: E.S.K 7/21/72	CHECKER: S.F.P 8/01/72
FOR PRODUCT INFO: http://www.burndy.com		DSN APPVL: R.B 8/02/72	MFG APPVL: --
		GA APPVL: D.VARIO 6/18/95	MKT APPVL: P.WERTHMAN 6/18/95
		PROD FAM: CM&R COMPRESSION	DRAWING NO: SD073935
		PROJECT #: --	SIZE: C
		DOCUMENT TYPE: Sales	REV: BC
		REL LEVEL: Released	SHEET 18 OF 24

REV: PE0200

DRAWING NO. SD073935	CONDUCTOR SIZE		CONNECTOR DIMENSIONS-LINEAR MEASURE IN, [mm]											INFORMATION
	ALUMINUM	COPPER	STUD SIZE	NO. OF HOLES	B	C	D	E	ϕ K	L	N	O.D.	(T)	
YA42A1	3	3	1/2	1	2.46 [62]	2.14 [54]	1.36 [35]	--	.56 [14]	5.32 [135]	.63 [16]	1.50 [38]	.39 [10]	TIN 3
YA42A3			5/8	1	2.46 [62]	2.14 [54]	1.86 [47]	--	.69 [18]	5.82 [148]	.88 [22]	1.50 [38]	.39 [10]	TIN 3
YA42A4			5/8	1	2.46 [62]	1.62 [41]	1.86 [47]	--	.69 [18]	5.82 [148]	.88 [22]	1.50 [38]	.39 [10]	TIN 3
YA42A5	6		1/2	2	2.46 [62]	1.62 [41]	3.13 [79]	1.75 [44]	.56 [14]	7.09 [180]	.63 [16]	1.50 [38]	.39 [10]	TIN 3
YA42A7			3/8	2	2.46 [62]	2.14 [54]	2.00 [51]	1.00 [25]	.44 [11]	5.96 [151]	.44 [11]	1.50 [38]	.39 [10]	TIN 3

REV	DATE	DESCRIPTION	ECO	BY	C'H'K.
BC	2020-12-15 23:00:00 EST	NOTE ADDED IN SHEET #14, 15 AND 16	201211003133	DD	MA

COLOR CODE	DIE INFORMATION		BURNDY® INSTALLATION TOOLING (#CRIMPS)								DIELESS (#CRIMPS)		STRIP LENGTH
	DIE INDEX	TYPE	MECHANICAL		HYDRAULIC						MECHANICAL	HYDRAULIC	
GRAY	303	DIE SET	--	--	Y34A Y34B	Y35, Y39 Y750 PAT750	Y46	Y45	Y48BH	Y60	--	--	2 7/8"
		NEST INDENTOR	--	--	--	U42ART (4)	U42ART (4)	U42ART (4)	--	--	--	--	



- NOTES:
- ALL HYLUGS™ ACCOMMODATE U.S. STANDARD WASHERS
 - REMOVE ALL EXCESS PENETROX™ FROM CONNECTOR AND ADJACENT CONDUCTOR PRIOR TO TAPING.
 - UL LISTED AND CSA CERTIFIED WIRE CONNECTORS. RATED 90 C (AL9CU) U42ART DIE IS FOR 900 Kcmil AL ONLY. Y644 TOOL IS FOR 600-900 Kcmil AL OR 600 Kcmil COPPER.
 - CONNECTOR BARRELS PREFILLED WITH PENETROX™
 - DIMENSIONS IN BRACKETS [] ARE IN MILLIMETERS ROUNDED OFF TO THE NEAREST MILLIMETER, UNLESS OTHERWISE NOTED, AND ARE FOR REFERENCE ONLY.
 - CAN BE MOUNTED SIDE BY SIDE ON FOUR HOLE NEMA PAD
 - ADD SUFFIX "DT" TO ORDER LUGS WITH CRIMP BARREL SEALED AIR TIGHT INSIDE THE TRANSITION.
 - CATALOG #PT6515 ADAPTOR IS REQUIRED TO USE "U" DIES IN Y45 SERIES TOOLS.
 - CATALOG #PUADP-1 ADAPTOR IS REQUIRED TO USE "U" DIES IN Y46 SERIES TOOLS.
 - Y35P3 INDENTOR ADAPTOR REQUIRED FOR "Y34PR" TYPE INDENTORS.
 - FOR USE BY CUSTOMERS THAT HAVE THIS HYPRESS™. NO NEW HYPRESSES™ ARE BEING PROCESSED.
 - ADD SUFFIX "U" TO ORDER LUGS WITH UNDRILLED TONGUE.

UNINSULATED COMPRESSION TERMINAL MATERIAL: ALUMINUM TUBE

HYLUG™

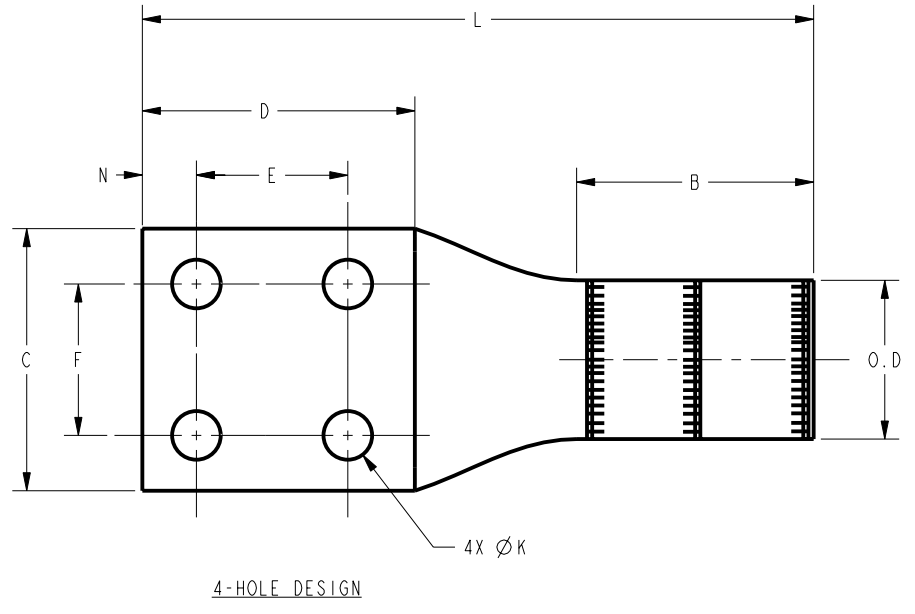
TO ORDER BURNDY® PRODUCTS CALL		ITEM NO: NA	
UNITED STATES: 1-800-346-4175 (LONDONDERRY, NH)		CAT. NO: YA39A-(SEE TABLE)	
CANADA: 1-800-361-6975 (QUEBEC) 1-800-387-6487 (ALL OTHER PROVINCES)		DRAWN BY: E.S.K 7/21/72	BURNDY
FOR PRODUCT INFO: http://www.burndy.com		CHECKER: S.F.P 8/01/72	
		DSN APPVL: R.B 8/02/72	
		MFG APPVL: --	
		GA APPVL: D.VARIO 6/18/95	
		MKT APPVL: P.WERTHMAN 6/18/95	SCALE: 1:1
		PROD FAM: CM&R COMPRESSION	DRAWING NO
		PROJECT #: --	SD073935
		DOCUMENT TYPE: Sales	REV
		REL LEVEL: Released	BC

SHEET 19 OF 24

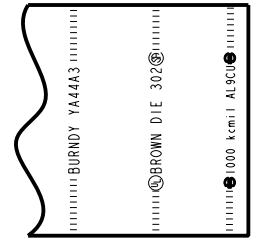
REV: PE0200

DRAWING NO. SD073935	CONDUCTOR SIZE		CONNECTOR DIMENSIONS-LINEAR MEASURE IN, [mm]											INFORMATION			
	ALUMINUM	COPPER	STUD SIZE	NO. OF HOLES	B	C	D	E	F	Ø K	L	N	O.D		(T)	PLATING	
YA44A1	1000 kcmil- (507mm ²) CLASS B CONCENTRIC COMPACT SIV	1000 kcmil- (507mm ²) CLASS B,C CONCENTRIC COMPACT	5/8	1	2.74 [70]	2.50 [64]	1.89 [48]	--	--	.69 [18]	6.50 [165]	.88 [22]	1.84 [47]	.66 [17]	TIN		
YA44A2			1/2	2	2.74 [70]	1.65 [42]	3.15 [80]	1.75 [44]	--	--	.56 [14]	7.76 [197]		.63 [16]	.55 [14]	NONE	
YA44A3			1/2	2	2.74 [70]	1.65 [42]	2.90 [74]	1.50 [38]	--	--	.56 [14]	7.51 [191]		.63 [16]	.55 [14]	TIN	
YA44A4			1/2	2	2.74 [70]	1.65 [42]	2.90 [74]	1.50 [38]	--	--	.56 [14]	7.51 [191]		.63 [16]	.55 [14]	NONE	
YA44A5			1/2	2	2.74 [70]	1.65 [42]	2.90 [74]	1.50 [38]	--	--	.56 [14]	7.51 [191]		.63 [16]	.55 [14]	TIN	
YA44A6			750 Kcmil 800 Kcmil CCA DLO (1184/22) (1258/22)	1/2	4	2.74 [70]	3.03 [77]	3.15 [80]	1.75 [44]	1.75 [44]	.56 [14]	7.76 [197]		.63 [16]	.53 [13]	.55 [14]	TIN
YA44A7			5/8	1	2.74 [70]	1.46 [37]	1.89 [48]	--	--	.69 [18]	6.50 [165]	.88 [22]			.55 [14]	TIN	
YA44A8			1/2	2	2.74 [70]	2.50 [64]	3.15 [80]	1.75 [44]	--	--	.56 [14]	7.76 [197]		.63 [16]	.66 [17]	TIN	
YA44A9			1/2	2(SLOTS)	2.74 [70]	1.65 [42]	3.15 [80]	1.75 [44]	--	(SLOT)		7.76 [197]		.63 [16]	.55 [14]	TIN	

REV	DATE	DESCRIPTION	ECO	BY	C'H'K.
BC	2020-12-15 23:00:00 EST	NOTE ADDED IN SHEET #14, 15 AND 16	201211003133	DD	MA

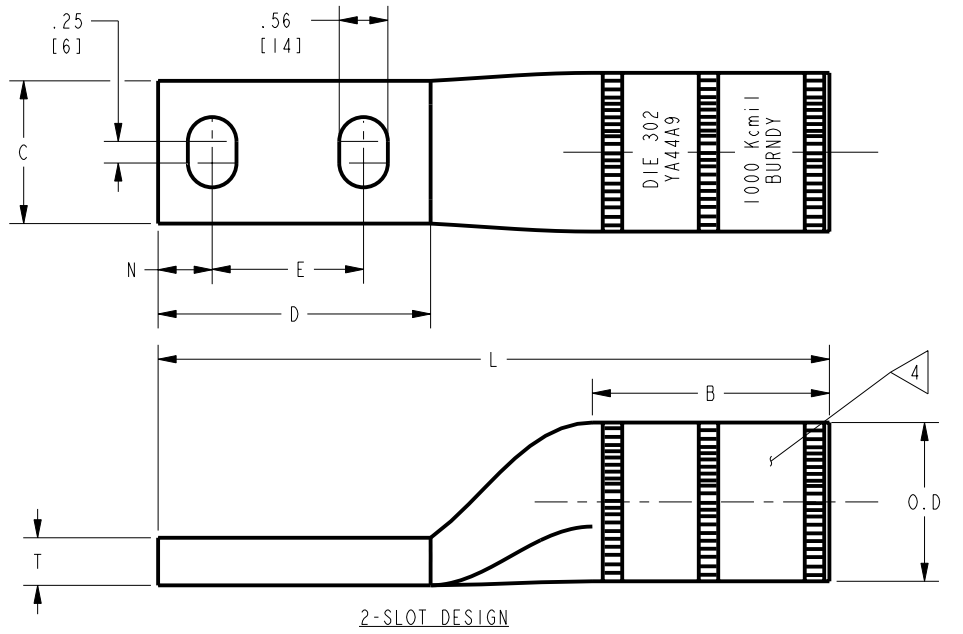


COLOR CODE	BURNDY® INSTALLATION TOOLING (#CRIMPS)										DIELESS (#CRIMPS)		STRIP LENGTH	
	DIE INFORMATION		MECHANICAL		HYDRAULIC						MECHANICAL			HYDRAULIC
	DIE INDEX	TYPE	OUR840	MD6	9 Y34A 10 Y34B	Y35, Y39 Y750 PAT750	8 Y46	7 Y45	Y48BH	Y60	MECHANICAL	HYDRAULIC		
BROWN	302	BROWN DIE SET	--	--	--	--	P44ART (4)	S44ART (4)	C44AR (2)	L44ART (2)	--	Y644MBH (1) ONLY Y444 (1) PAT444 (1)	3 1/8"	
		NEST INDENTOR	--	--	--	--	NO NEST (2) P48PR-1	--	F46D(2) Y48PR-1	--				



NOTES:

- ALL HYLUGS™ ACCOMMODATE U.S. STANDARD WASHERS
- REMOVE ALL EXCESS PENETROX™ FROM CONNECTOR AND ADJACENT CONDUCTOR PRIOR TO TAPING.
- UL LISTED AND CSA CERTIFIED WIRE CONNECTORS. RATED 90 C (AL9CU) FOR USE WITH COPPER OR ALUMINUM CONDUCTOR. APPROVAL APPLY TO TIN PLATED CONNECTORS ONLY.
- CONNECTOR BARRELS PREFILLED WITH PENETROX™
- DIMENSIONS IN BRACKETS [] ARE IN MILLIMETERS ROUNDED OFF TO THE NEAREST MILLIMETER, UNLESS OTHERWISE NOTED, AND ARE FOR REFERENCE ONLY.
- ADD SUFFIX "DT" TO ORDER LUGS WITH CRIMP BARREL SEALED AIR TIGHT INSIDE THE TRANSITION.
- CATALOG #PT6515 ADAPTOR IS REQUIRED TO USE "U" DIES IN Y45 SERIES TOOLS.
- CATALOG #PUADP-1 ADAPTOR IS REQUIRED TO USE "U" DIES IN Y46 SERIES TOOLS.
- Y35P3 INDENTOR ADAPTOR REQUIRED FOR "Y34PR" TYPE INDENTORS.
- FOR USE BY CUSTOMERS THAT HAVE THIS HYPRESS™. NO NEW HYPRESSES™ ARE BEING PROCESSED.
- UL LISTED WITH DLO COPPER CLAD ALUMINUM CONDUCTOR USING Y644MBH AND Y444/PAT444 TOOLS ONLY.
- ADD SUFFIX "U" TO ORDER LUGS WITH UNDRILLED TONGUE.
- SEE DEVELOPED LETTERING VIEW FOR THESE CATALOGS.



TO ORDER BURNDY® PRODUCTS CALL		HYLUG™	
UNITED STATES: 1-800-346-4175 (LONDONDERRY, NH)		ITEM NO: N/A	CAT. NO: YA44A- (SEE TABLE)
CANADA: 1-800-361-6975 (QUEBEC) 1-800-387-6487 (ALL OTHER PROVINCES)		DRAWN BY: E.S.K 7/21/72	CHECKER: S.F.P 8/01/72
FOR PRODUCT INFO: http://www.burndy.com		DSN APPVL: R.B 8/02/72	MFG APPVL: --
		GA APPVL: D.VARIO 6/18/95	MKT APPVL: P.WERTHMAN 6/18/95
		PROD FAM: CM&R COMPRESSION	DRAWING NO: SD073935
		PROJECT #: --	REV: BC
		DOCUMENT TYPE: Sales	SCALE: 1:1
		REL LEVEL: Released	SHEET 20 OF 24

REV: PE0200

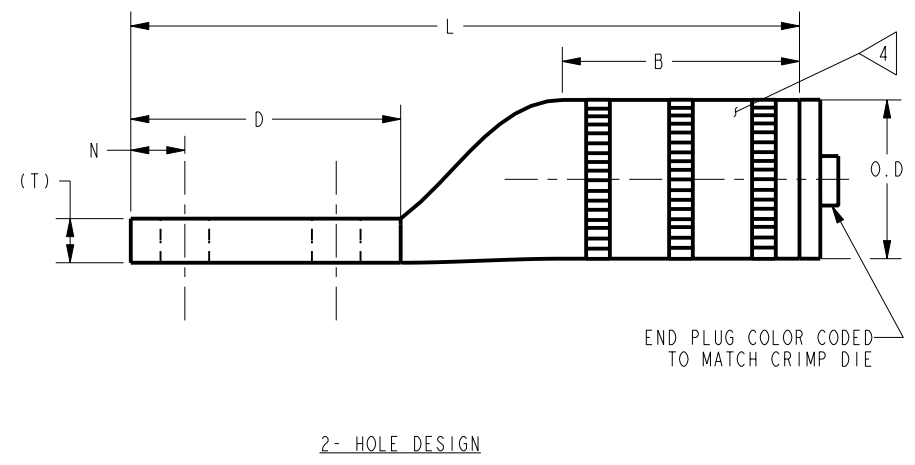
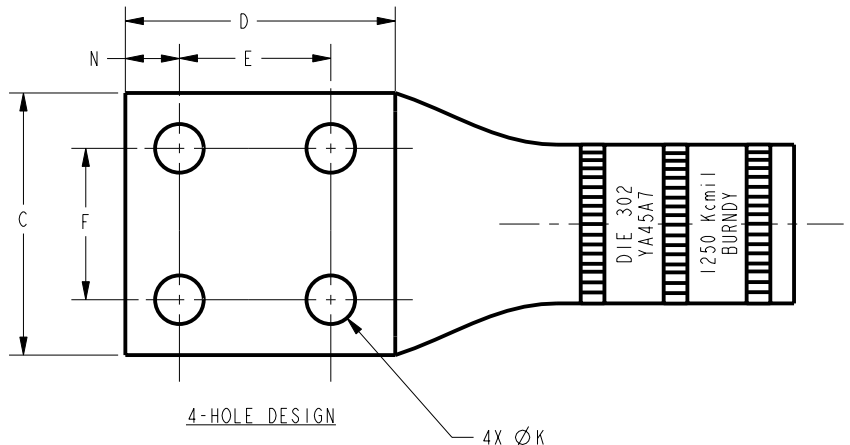
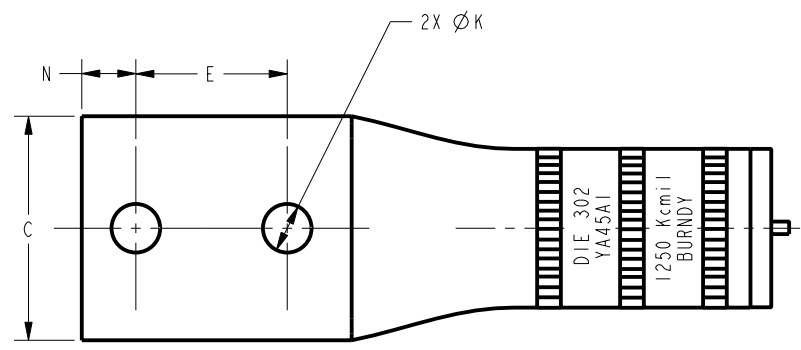
D
C
B
A

D
C
B
A

DRAWING NO. SD073935	CONDUCTOR SIZE		CONNECTOR DIMENSIONS-LINEAR MEASURE IN, [mm]											INFORMATION	
	ALUMINUM	COPPER	STUD SIZE	NO. OF HOLES	B	C	D	E	F	Ø K	L	N	O.D		(T)
YA45A1	1250 kcmil- (633mm ²) CLASS B CONCENTRIC COMPRESSED SIW	1250 kcmil- (633mm ²) CLASS B,C CONCENTRIC COMPRESSED COMPACT	1/2	2	3.30 [84]	3.03 [77]	3.12 [79]	1.75 [44]	--	.56 [14]	8.72 [221]	.63 [16]	2.26 [57]	.93 [24]	TIN
YA45A2			1/2	2	2.74 [70]	2.59 [66]	3.12 [79]	1.75 [44]	--	.56 [14]	7.73 [196]	.63 [16]	1.84 [47]	.51 [13]	NONE
YA45A5			1/2	4	3.30 [84]	3.03 [77]	3.12 [79]	1.75 [44]	1.75 [44]	.56 [14]	8.72 [221]	.63 [16]	2.26 [57]	.93 [24]	TIN
YA45A6			1/2	4	2.74 [70]	2.59 [66]	3.12 [79]	1.75 [44]	1.75 [44]	.56 [14]	7.73 [196]	.63 [16]	1.84 [47]	.43 [11]	NONE
YA45A3	900 Kcmil- (456mm ²)	1250 kcmil- (633mm ²) CLASS B,C CONCENTRIC COMPRESSED COMPACT	1/2	4	3.30 [84]	3.03 [77]	3.12 [79]	1.75 [44]	1.75 [44]	.56 [14]	8.72 [221]	.63 [16]	2.26 [57]	.93 [24]	TIN
YA45A4			1/2	4	2.74 [70]	2.59 [66]	3.12 [79]	1.75 [44]	1.75 [44]	.56 [14]	7.73 [196]	.63 [16]	1.84 [47]	.43 [11]	NONE
YA45A7	1000 Kcmil- (507mm ²)	1250 kcmil- (633mm ²) CLASS B,C CONCENTRIC COMPRESSED COMPACT	1/2	4	3.30 [84]	3.03 [77]	3.12 [79]	1.75 [44]	1.75 [44]	.56 [14]	8.72 [221]	.63 [16]	2.26 [57]	.93 [24]	TIN
YA45A8	1/2		4	2.74 [70]	2.59 [66]	3.12 [79]	1.75 [44]	1.75 [44]	.56 [14]	7.73 [196]	.63 [16]	1.84 [47]	.43 [11]	NONE	

REV	DATE	DESCRIPTION	ECO	BY	C'H'K.
BC	2020-12-15 23:00:00 EST	NOTE ADDED IN SHEET #14, 15 AND 16	201211003133	DD	MA

COLOR CODE	BURNDY® INSTALLATION TOOLING (#CRIMPS)										DIELESS (#CRIMPS)		STRIP LENGTH
	DIE INFORMATION		MECHANICAL		HYDRAULIC						MECHANICAL	HYDRAULIC	
DIE INDEX	TYPE	OUR840	MD6	Y34A Y34B	Y35, Y39 Y750 PAT750	Y46	Y45	Y48BH	Y60				
BROWN	302	BROWN DIE SET	--	--	--	--	P44ART (4)	S44ART (4)	C44AR (2)	L44ART (2)	--	Y644MBH (1) ONLY	3 1/8"
		NEST INDENTOR	--	--	--	--	NO NEST (2) P48PR-1	--	F46D(2) Y48PR-1	--			



- NOTES:
- ALL HYLUGS™ ACCOMMODATE U.S. STANDARD WASHERS
 - REMOVE ALL EXCESS PENETROX™ FROM CONNECTOR AND ADJACENT CONDUCTOR PRIOR TO TAPING.
 - UL LISTED AND CSA CERTIFIED WIRE CONNECTORS. RATED 70C (AL7CU) FOR USE WITH COPPER OR ALUMINUM CONDUCTOR. APPROVAL APPLY TO TIN PLATED CONNECTORS ONLY.
 - CONNECTOR BARRELS PREFILLED WITH PENETROX™
 - DIMENSIONS IN BRACKETS [] ARE IN MILLIMETERS ROUNDED OFF TO THE NEAREST MILLIMETER, UNLESS OTHERWISE NOTED, AND ARE FOR REFERENCE ONLY.
 - ADD SUFFIX "DT" TO ORDER LUGS WITH CRIMP BARREL SEALED AIR TIGHT INSIDE THE TRANSITION.
 - CATALOG #PT6515 ADAPTOR IS REQUIRED TO USE "U" DIES IN Y45 SERIES TOOLS.
 - CATALOG #PUADP-1 ADAPTOR IS REQUIRED TO USE "U" DIES IN Y46 SERIES TOOLS.
 - Y35P3 INDENTOR ADAPTOR REQUIRED FOR "Y34PR" TYPE INDENTORS.
 - FOR USE BY CUSTOMERS THAT HAVE THIS HYPRESS™. NO NEW HYPRESSES™ ARE BEING PROCESSED.
 - UL LISTED WITH DLO COPPER CLAD ALUMINUM CONDUCTOR USING Y644MBH AND Y444/PAT44 TOOLS ONLY.
 - ADD SUFFIX "U" TO ORDER LUGS WITH UNDRILLED TONGUE.

UNINSULATED COMPRESSION TERMINAL
MATERIAL: ALUMINUM TUBE

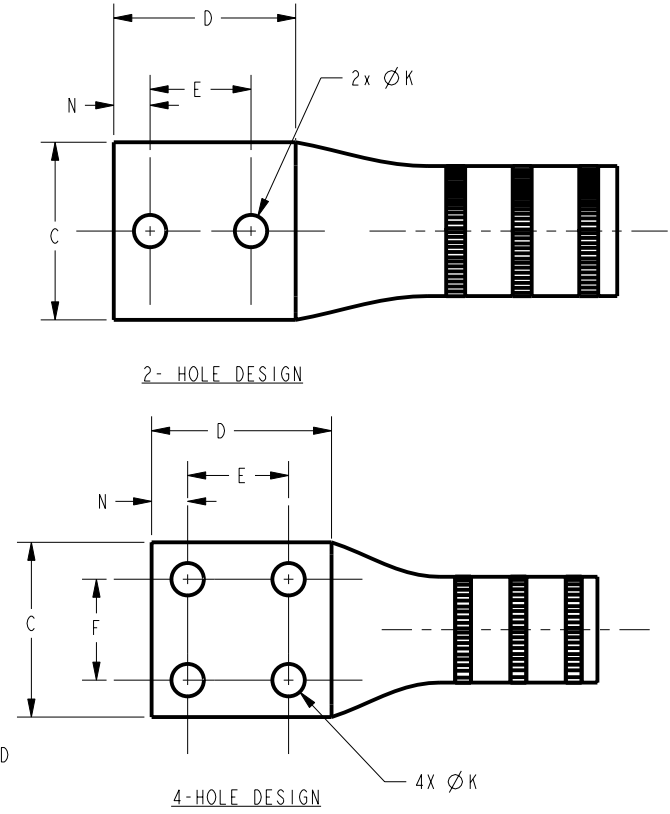
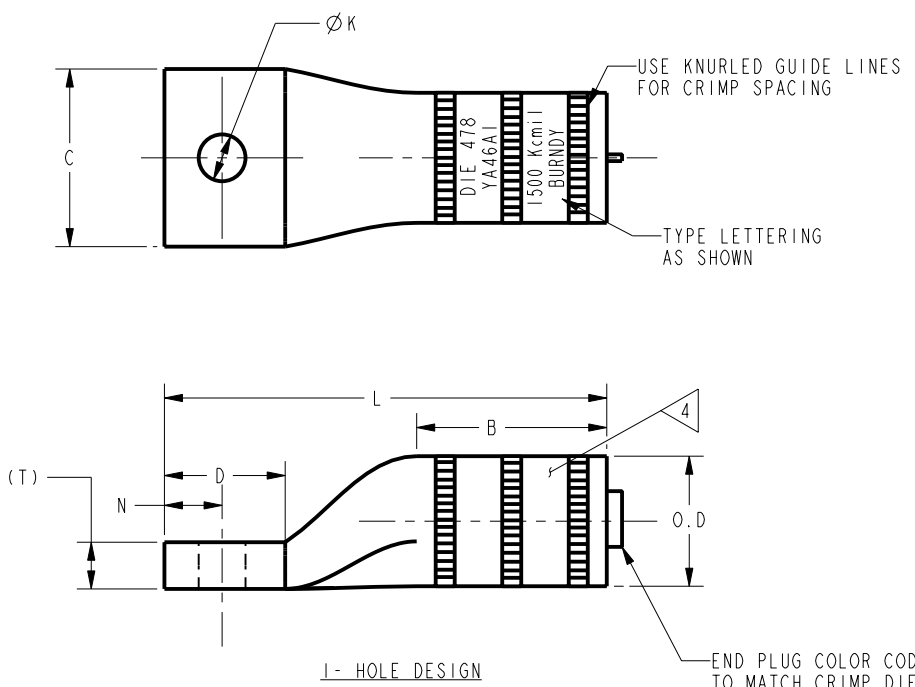
TO ORDER BURNDY® PRODUCTS CALL UNITED STATES: 1-800-346-4175 (LONDONDERRY, NH) CANADA: 1-800-361-6975 (QUEBEC) 1-800-387-6487 (ALL OTHER PROVINCES) FOR PRODUCT INFO: http://www.burndy.com	HYLUG™	
	ITEM NO: NA	
	CAT. NO: YA45A-(SEE TABLE)	
	DRAWN BY: E.S.K	7/21/72
	CHECKER: S.F.P	8/01/72
	DSN APPVL: R.B	8/02/72
	MFG APPVL: --	--
	QA APPVL: D.VARIO	6/18/95
	MKT APPVL: P.WERTHMAN	6/18/95
	SCALE: 1:1	
PROD FAM: CM&R COMPRESSION	DRAWING NO: SD073935	REV: BC
PROJECT #: --	SIZE: C	SHEET 21 OF 24
DOCUMENT TYPE: Sales		
REL LEVEL: Released		

REV: PE0200

DRAWING NO. SD073935		4		3										2		1	
CATALOG NUMBER	CONDUCTOR SIZE		CONNECTOR DIMENSIONS-LINEAR MEASURE IN, [mm]											INFORMATION			
	ALUMINUM	COPPER	STUD SIZE	NO. OF HOLES	B	C	D	E	F	ϕ_K	L	N	O.D.		(T)	PLATING	
YA46A1	1500 Kcmil- (760mm ²) CLASS B CONCENTRIC COMPRESSED COMPACT SIW	1500 Kcmil- (760mm ²) CLASS B,C CONCENTRIC COMPRESSED COMPACT	3/4	1	3.30 [84]	3.08 [78]	2.09 [53]	--	--	.81 [21]	7.67 [195]	1.00 [25]	2.26 [57]	.81 [21]	TIN \triangleleft 3		
YA46A2			1/2	2	3.30 [84]	3.08 [78]	3.15 [80]	1.75 [44]	--	.56 [14]	8.73 [222]	.63 [16]		.81 [21]	NONE		
YA46A3			1/2	4	3.30 [84]	3.08 [78]	3.15 [80]	1.75 [44]	1.75 [44]	.56 [14]	8.73 [222]	.63 [16]		.81 [21]	TIN \triangleleft 3		
YA46A4			1/2	4	3.30 [84]	3.08 [78]	3.15 [80]	1.75 [44]	1.75 [44]	.56 [14]	8.73 [222]	.63 [16]		.81 [21]	NONE		
YA46A5			1/2	4	3.30 [84]	3.08 [78]	3.15 [80]	1.75 [44]	1.75 [44]	.56 [14]	8.73 [222]	.63 [16]		.81 [21]	TIN \triangleleft 3		
YA46A6			1/2	4	3.30 [84]	3.08 [78]	3.15 [80]	1.75 [44]	1.75 [44]	.56 [14]	8.73 [222]	.63 [16]		.81 [21]	NONE		

REV	DATE	DESCRIPTION	ECO	BY	C'H'K.
BC	2020-12-15 23:00:00 EST	NOTE ADDED IN SHEET #14, 15 AND 16	201211003133	DD	MA

COLOR CODE	BURNDY® INSTALLATION TOOLING (#CRIMPS)										DIELESS (#CRIMPS)		STRIP LENGTH
	DIE INFORMATION		MECHANICAL		HYDRAULIC						MECHANICAL	HYDRAULIC	
	DIE INDEX	TYPE	OUR840	MD6	Y34A Y34B	Y35, Y39 Y750 PAT750	Y46	Y45	Y48BH	Y60			
BLUE	478	BLUE DIE SET NEST INDENTOR	--	--	--	--	--	--	C46AR (2) C46AD(2) Y48PR-1	L46ART (2)	--	--	3 3/4"



- NOTES:
1. ALL HYLUGS™ ACCOMMODATE U.S. STANDARD WASHERS
 2. REMOVE ALL EXCESS PENETROX™ FROM CONNECTOR AND ADJACENT CONDUCTOR PRIOR TO TAPING.
 3. UL LISTED AND CSA CERTIFIED WIRE CONNECTORS. RATED 70C (AL7CU) FOR USE WITH COPPER OR ALUMINUM CONDUCTOR. APPROVAL APPLY TO TIN PLATED CONNECTORS ONLY.
 4. CONNECTOR BARRELS PREFILLED WITH PENETROX™
 5. DIMENSIONS IN BRACKETS [] ARE IN MILLIMETERS ROUNDED OFF TO THE NEAREST MILLIMETER, UNLESS OTHERWISE NOTED, AND ARE FOR REFERENCE ONLY.
 6. ADD SUFFIX "DT" TO ORDER LUGS WITH CRIMP BARREL SEALED AIR TIGHT INSIDE THE TRANSITION.
 7. CATALOG #PT6515 ADAPTOR IS REQUIRED TO USE "U" DIES IN Y45 SERIES TOOLS.
 8. CATALOG #PUADP-1 ADAPTOR IS REQUIRED TO USE "U" DIES IN Y46 SERIES TOOLS.
 9. Y35P3 INDENTOR ADAPTOR REQUIRED FOR "Y34PR" TYPE INDENTORS.
 10. FOR USE BY CUSTOMERS THAT HAVE THIS HYPRESS™. NO NEW HYPRESSES™ ARE BEING PROCESSED.
 11. ADD SUFFIX "U" TO ORDER LUGS WITH UNDRILLED TONGUE.

UNINSULATED COMPRESSION TERMINAL
MATERIAL: ALUMINUM TUBE

TO ORDER BURNDY® PRODUCTS CALL		HYLUG™	
UNITED STATES: 1-800-346-4175 (LONDONDERRY, NH)		ITEM NO: NA	
CANADA: 1-800-361-6975 (QUEBEC) 1-800-387-6487 (ALL OTHER PROVINCES)		CAT. NO: YA46A-(SEE TABLE)	
FOR PRODUCT INFO: http://www.burndy.com		DRAWN BY: E.S.K 7/21/72	
		CHECKER: S.F.P 8/01/72	
		DSN APPVL: R.B 8/02/72	
		MFG APPVL: --	
		QA APPVL: D.VARIO 6/18/95	
		MKT APPVL: P.WERTHMAN 6/18/95	
		SCALE: 1:1	
		PROD FAM: CM&R COMPRESSION	
		DRAWING NO	
		SD073935	
		REV	
		BC	
		SHEET 22 OF 24	

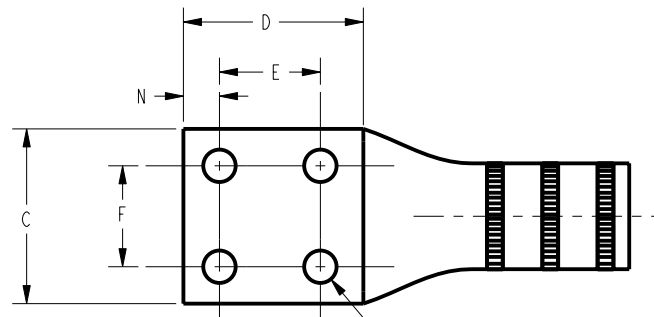
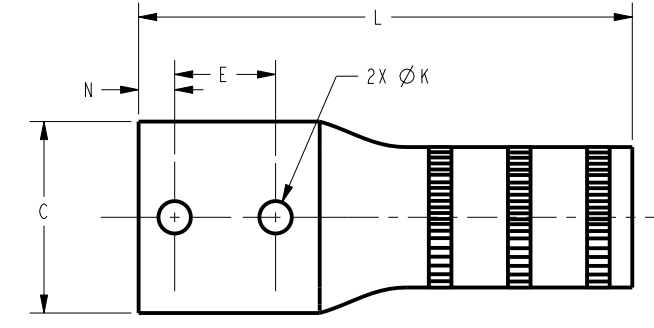
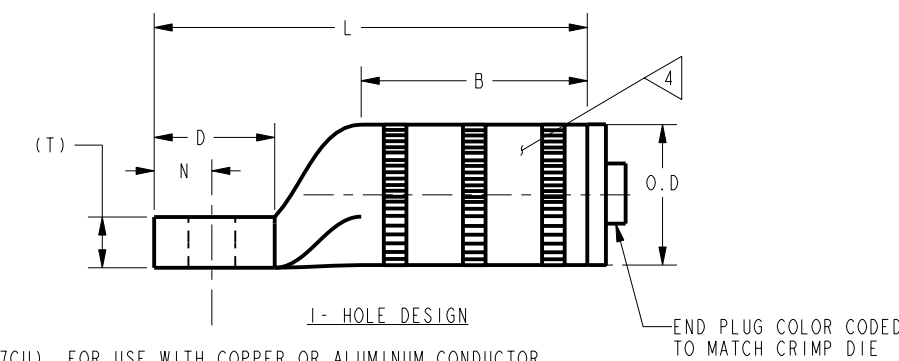
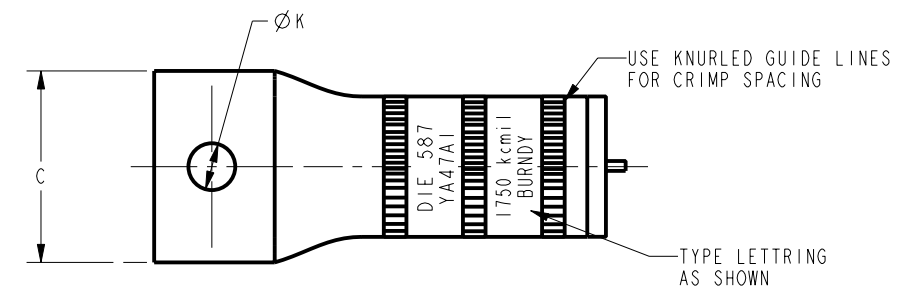
REV: PE0200

DRAWING NO.
SD073935

CATALOG NUMBER	CONDUCTOR SIZE		CONNECTOR DIMENSIONS-LINEAR MEASURE IN, [mm]											INFORMATION	
	ALUMINUM	COPPER	STUD SIZE	NO. OF HOLES	B	C	D	E	F	Ø K	L	N	O.D		(T)
YA47A1	1750 Kcmil- (887mm ²) CLASS B CONCENTRIC COMPRESSED COMPACT SIW	1750 Kcmil- (887mm ²) CLASS B,C CONCENTRIC COMPRESSED COMPACT	3/4	1	3.92 [100]	3.32 [84]	2.09 [53]	--	--	.81 [21]	7.51 [191]	1.00 [25]	2.44 [62]	.88 [22]	TIN
YA47A2			1/2	2	3.92 [100]	3.32 [84]	3.14 [80]	1.75 [44]	--	.56 [14]	8.56 [217]	.63 [16]		.88 [22]	NONE
YA47A3			1/2	4	3.92 [100]	3.32 [84]	3.14 [80]	1.75 [44]	1.75 [44]	.56 [14]	8.56 [217]	.63 [16]		.88 [22]	TIN
YA47A4			1/2	4	3.92 [100]	3.32 [84]	3.14 [80]	1.75 [44]	1.75 [44]	.56 [14]	8.56 [217]	.63 [16]		.88 [22]	NONE
YA47A5			1/2	4	3.92 [100]	3.32 [84]	3.14 [80]	1.75 [44]	1.75 [44]	.56 [14]	8.56 [217]	.63 [16]		.88 [22]	TIN
YA47A6			1/2	4	3.92 [100]	3.32 [84]	3.14 [80]	1.75 [44]	1.75 [44]	.56 [14]	8.56 [217]	.63 [16]		.88 [22]	NONE

REV	DATE	DESCRIPTION	ECO	BY	C'H'K.
BC	2020-12-15 23:00:00 EST	NOTE ADDED IN SHEET #14, 15 AND 16	201211003133	DD	MA

COLOR CODE	BURNDY® INSTALLATION TOOLING (#CRIMPS)										DIELESS (#CRIMPS)		STRIP LENGTH
	DIE INFORMATION		MECHANICAL		HYDRAULIC						MECHANICAL	HYDRAULIC	
DIE INDEX	TYPE	OUR840	MD6	Y34A Y34B	Y35, Y39 Y750 PAT750	Y46	Y45	Y488H	Y60				
WHITE	587	WHITE DIE SET NEST INDENTOR	--	--	--	--	--	--	--	L47ART (2)	--	--	4 3/8"



NOTES:

- ALL HYLUGS™ ACCOMMODATE U.S. STANDARD WASHERS
- REMOVE ALL EXCESS PENETROX™ FROM CONNECTOR AND ADJACENT CONDUCTOR PRIOR TO TAPING.
- UL LISTED AND CSA CERTIFIED WIRE CONNECTORS. RATED 70C (AL7CU) FOR USE WITH COPPER OR ALUMINUM CONDUCTOR. APPROVAL APPLY TO TIN PLATED CONNECTORS ONLY.
- CONNECTOR BARRELS PREFILLED WITH PENETROX™
- DIMENSIONS IN BRACKETS [] ARE IN MILLIMETERS ROUNDED OFF TO THE NEAREST MILLIMETER, UNLESS OTHERWISE NOTED, AND ARE FOR REFERENCE ONLY.
- ADD SUFFIX "DT" TO ORDER LUGS WITH CRIMP BARREL SEALED AIR TIGHT INSIDE THE TRANSITION.
- CATALOG #PT6515 ADAPTOR IS REQUIRED TO USE "U" DIES IN Y45 SERIES TOOLS.
- CATALOG #PUADP-1 ADAPTOR IS REQUIRED TO USE "U" DIES IN Y46 SERIES TOOLS.
- Y35P3 INDENTOR ADAPTOR REQUIRED FOR "Y34PR" TYPE INDENTORS.
- FOR USE BY CUSTOMERS THAT HAVE THIS HYPRESS™. NO NEW HYPRESSES™ ARE BEING PROCESSED.
- ADD SUFFIX "U" TO ORDER LUGS WITH UNDRILLED TONGUE.

UNINSULATED COMPRESSION TERMINAL
MATERIAL: ALUMINUM TUBE

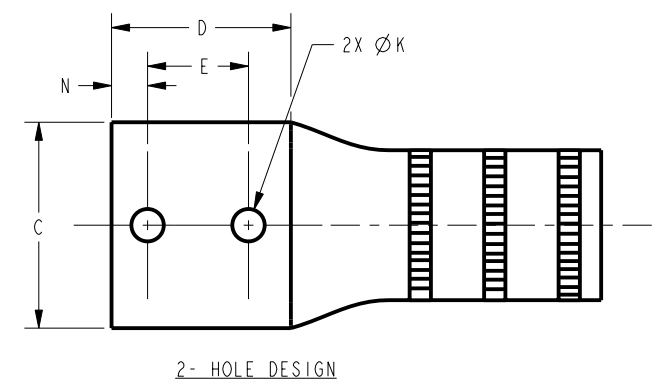
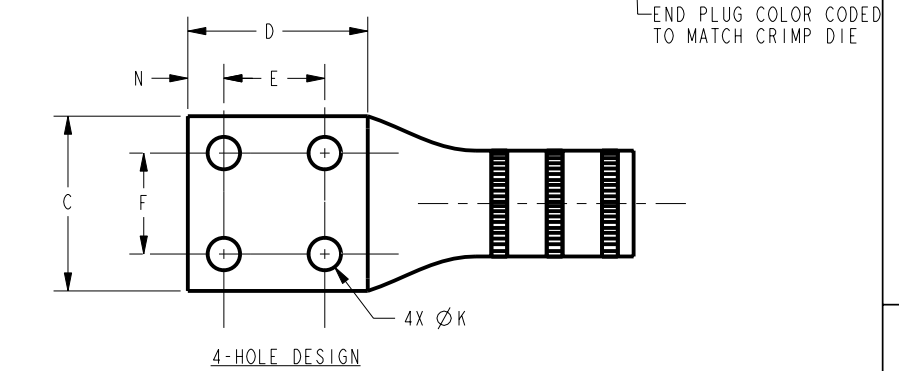
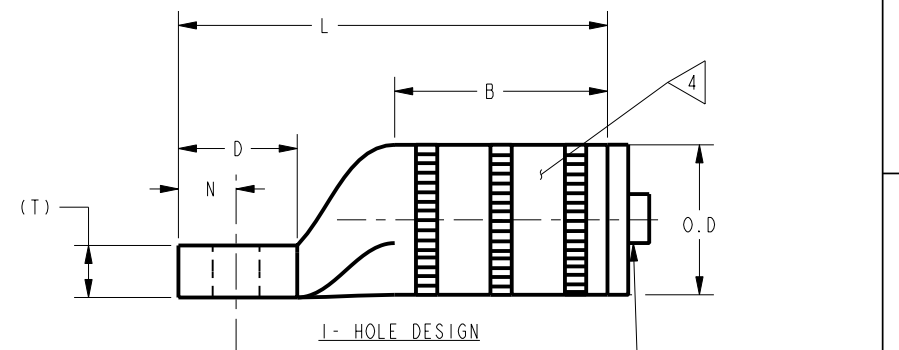
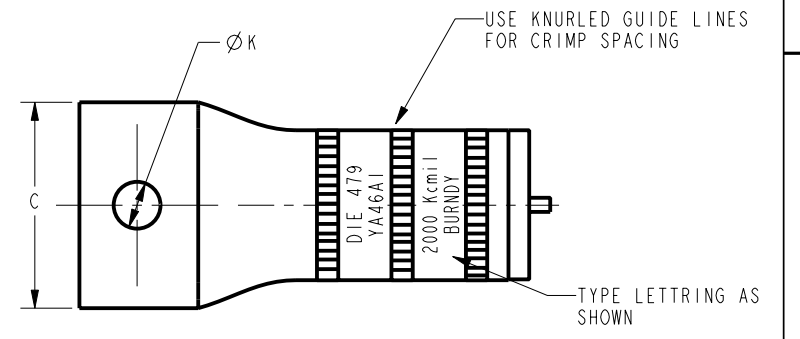
TO ORDER BURNDY® PRODUCTS CALL		HYLUG™	
UNITED STATES: 1-800-346-4175 (LONDONDERRY, NH)		ITEM NO: NA	CAT. NO: YA47A-(SEE TABLE)
CANADA: 1-800-361-6975 (QUEBEC) 1-800-387-6487 (ALL OTHER PROVINCES)		DRAWN BY: E.S.K 7/21/72	CHECKER: S.F.P 8/01/72
FOR PRODUCT INFO: http://www.burndy.com		DSN APPVL: R.B 8/02/72	MFG APPVL: --
		GA APPVL: D.VARIO 6/18/95	MKT APPVL: P.WERTHMAN 6/18/95
		PROD FAM: CM&R COMPRESSION	DRAWING NO: SD073935
		PROJECT #: --	REV: BC
		DOCUMENT TYPE: Sales	SCALE: 1:1
		REL LEVEL: Released	SHEET 23 OF 24

REV: PE0200

DRAWING NO. SD073935	CONDUCTOR SIZE		CONNECTOR DIMENSIONS-LINEAR MEASURE IN. [mm]											INFORMATION			
	ALUMINUM	COPPER	STUD SIZE	NO. OF HOLES	B	C	D	E	F	Ø K	L	N	O.D		(T)	PLATING	
YA48A1	2000 Kcmil- (1010mm ²) CLASS B CONCENTRIC COMPRESSED COMPACT SIW	2000 Kcmil- (1010mm ²) CLASS B,C CONCENTRIC COMPRESSED COMPACT	3/4	1	3.69 [94]	3.57 [91]	2.06 [52]	--	--	.81 [21]	7.44 [189]	1.00 [25]	2.60 [66]	.80 [20]	TIN 3		
YA48A2																NONE	
YA48A3					1/2	2	3.69 [94]	3.57 [91]	3.11 [79]	1.75 [44]	--	.56 [14]		8.49 [216]	.63 [16]	.90 [23]	TIN 3
YA48A4																	NONE
YA48A8					1/2	2	3.69 [94]	2.60 [66]	3.00 [76]	1.75 [44]	--	.66 [17]		8.40 [213]	.55 [14]	.90 [23]	TIN 3
YA48A5																	NONE
YA48A6					1/2	4	3.69 [94]	3.57 [91]	3.11 [79]	1.75 [44]	1.75 [44]	.56 [14]		8.49 [216]	.63 [16]	.90 [23]	TIN 3
YA48A10					--	--	3.69 [94]	3.57 [91]	3.05 [77]	--	--	--		8.49 [216]	--	.90 [23]	NONE
YA483A1					1/2	2	3.69 [94]	3.63 [92]	3.11 [79]	1.75 [44]	--	.56 [14]		8.49 [216]	.63 [16]	.79 [20]	TIN 3
YA483A2																	NONE

REV	DATE	DESCRIPTION	ECO	BY	C'H'K.
BC	2020-12-15 23:00:00 EST	NOTE ADDED IN SHEET #14, 15 AND 16	201211003133	DD	MA

COLOR CODE	BURNDY® INSTALLATION TOOLING (#CRIMPS)										DIELESS (#CRIMPS)		STRIP LENGTH	
	DIE INFORMATION		MECHANICAL		HYDRAULIC						MECHANICAL	HYDRAULIC		
	DIE INDEX	TYPE	OUR840	MD6	Y34A Y34B	Y35, Y39 Y750 PAT750	Y46	Y45	Y488H	Y60				
RED	479	RED DIE SET NEST INDENTOR	--	--	--	--	--	--	--	--	L48ART (2)	--	--	4 1/8"



- NOTES:
- ALL HYLUGS™ ACCOMMODATE U.S. STANDARD WASHERS
 - REMOVE ALL EXCESS PENETROX™ FROM CONNECTOR AND ADJACENT CONDUCTOR PRIOR TO TAPING.
 - UL LISTED AND CSA CERTIFIED WIRE CONNECTORS, RATED 70C (AL7CU) FOR USE WITH COPPER OR ALUMINUM CONDUCTOR. APPROVAL APPLY TO TIN PLATED CONNECTORS ONLY.
 - CONNECTOR BARRELS PREFILLED WITH PENETROX™
 - DIMENSIONS IN BRACKETS [] ARE IN MILLIMETERS ROUNDED OFF TO THE NEAREST MILLIMETER, UNLESS OTHERWISE NOTED, AND ARE FOR REFERENCE ONLY.
 - ADD SUFFIX "DT" TO ORDER LUGS WITH CRIMP BARREL SEALED AIR TIGHT INSIDE THE TRANSITION.
 - THIS CONNECTOR DESIGNED TO BE WELDED TO AN ALUMINIUM BUS AND WILL HAVE A BARE FINISH AND NO PENETROX
 - CATALOG #PT6515 ADAPTOR IS REQUIRED TO USE "U" DIES IN Y45 SERIES TOOLS.
 - CATALOG #PUADP-1 ADAPTOR IS REQUIRED TO USE "U" DIES IN Y46 SERIES TOOLS.
 - Y35P3 INDENTOR ADAPTOR REQUIRED FOR "Y34PR" TYPE INDENTORS.
 - FOR USE BY CUSTOMERS THAT HAVE THIS HYPRESS™. NO NEW HYPRESSES™ ARE BEING PROCESSED.
 - ADD SUFFIX "U" TO ORDER LUGS WITH UNDRILLED TONGUE.

TO ORDER BURNDY® PRODUCTS CALL		HYLUG™	
UNITED STATES: 1-800-346-4175 (LONDONDERRY, NH)		ITEM NO: NA	CAT. NO: YA48A-(SEE TABLE)
CANADA: 1-800-361-6975 (QUEBEC) 1-800-387-6487 (ALL OTHER PROVINCES)		DRAWN BY: E.S.K 7/21/72	CHECKER: S.F.P 8/01/72
FOR PRODUCT INFO: http://www.burndy.com		DSN APPVL: R.B 8/02/72	MFG APPVL: --
		GA APPVL: D.VARIO 6/18/95	MKT APPVL: P.WERTHMAN 6/18/95
		PROD FAM: CM&R COMPRESSION	DRAWING NO: SD073935
		PROJECT #: --	REV: BC
		DOCUMENT TYPE: Sales	SHEET 24 OF 24
		REL LEVEL: Released	SCALE: 1:2

REV: PE0200

