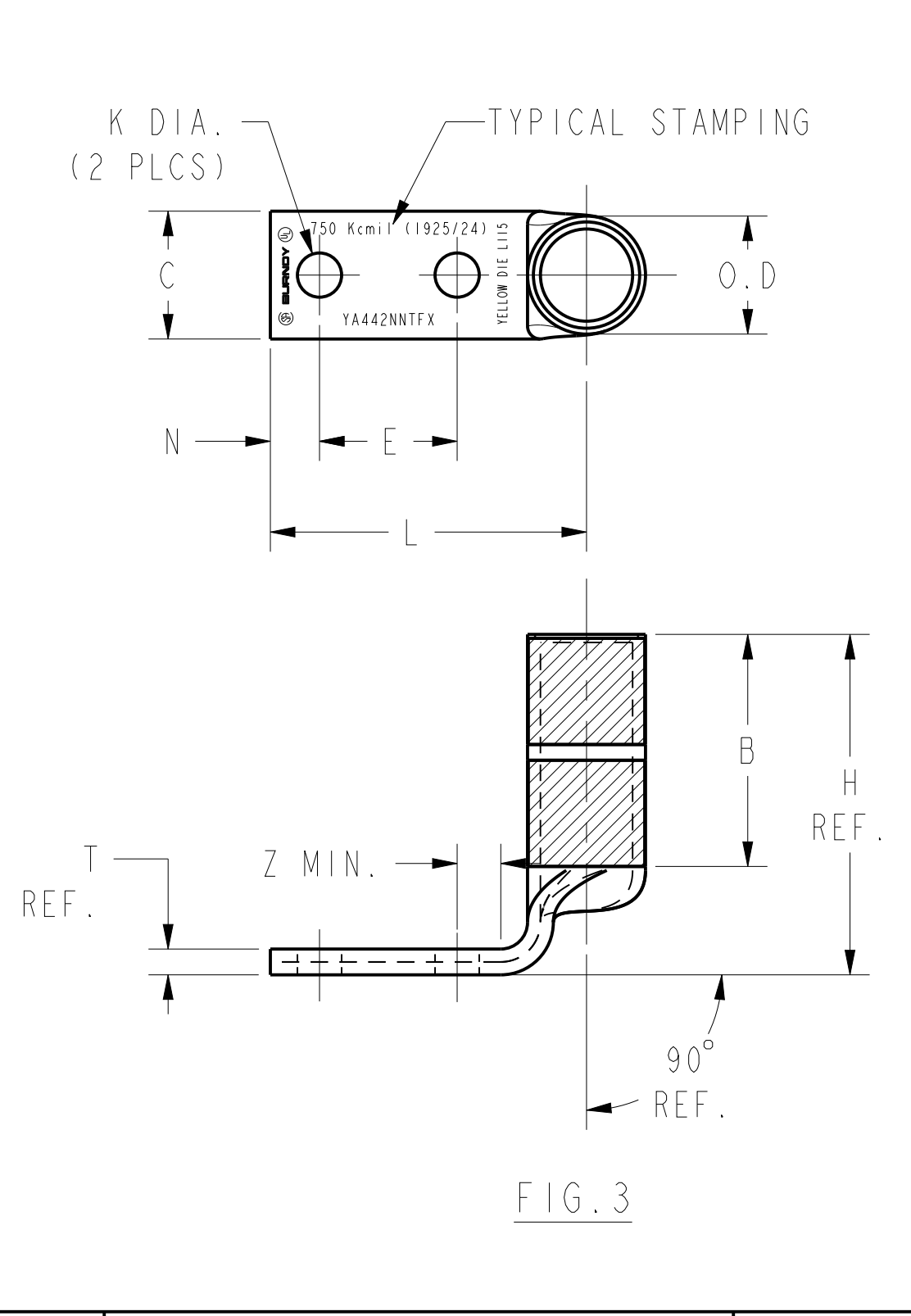
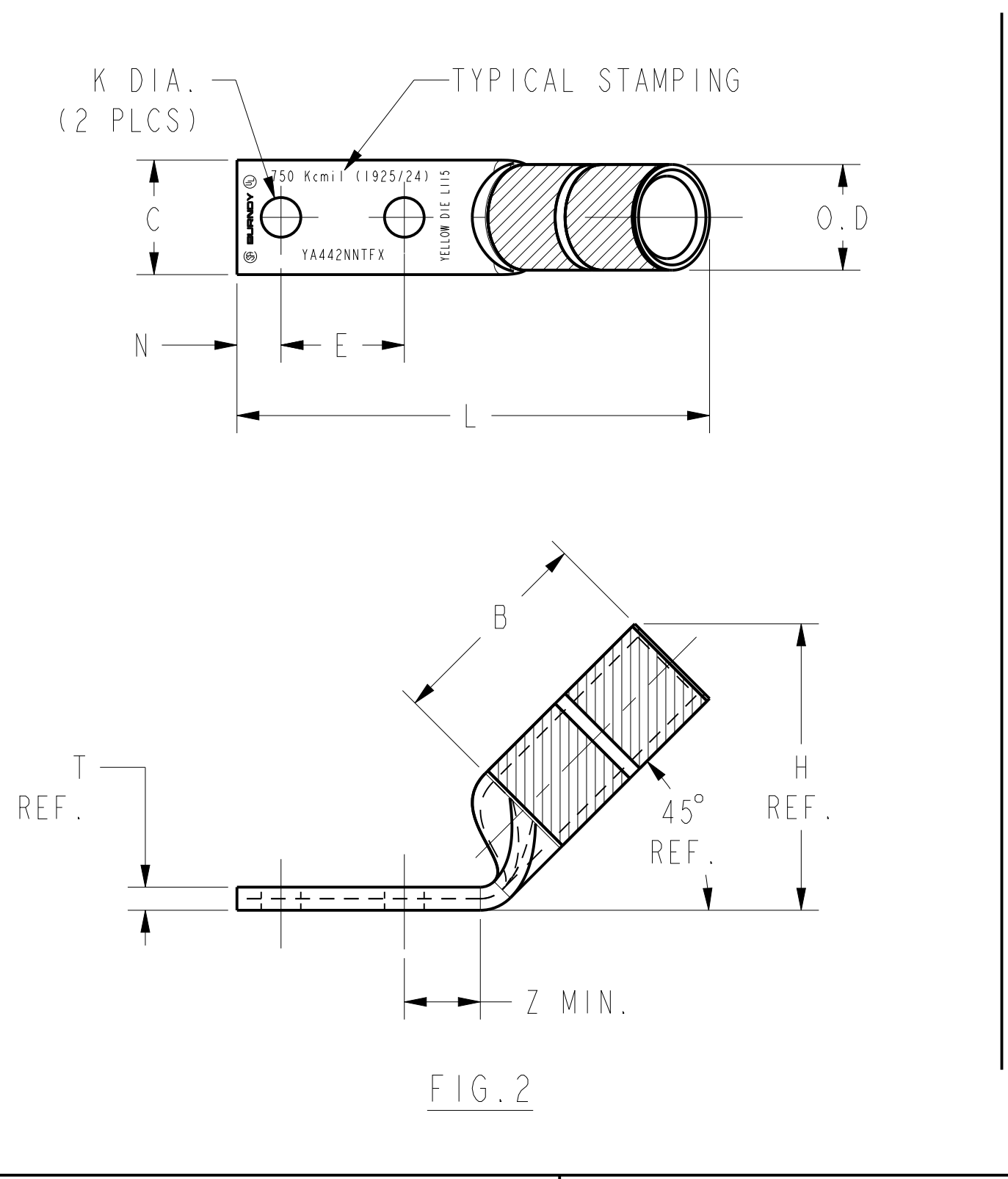
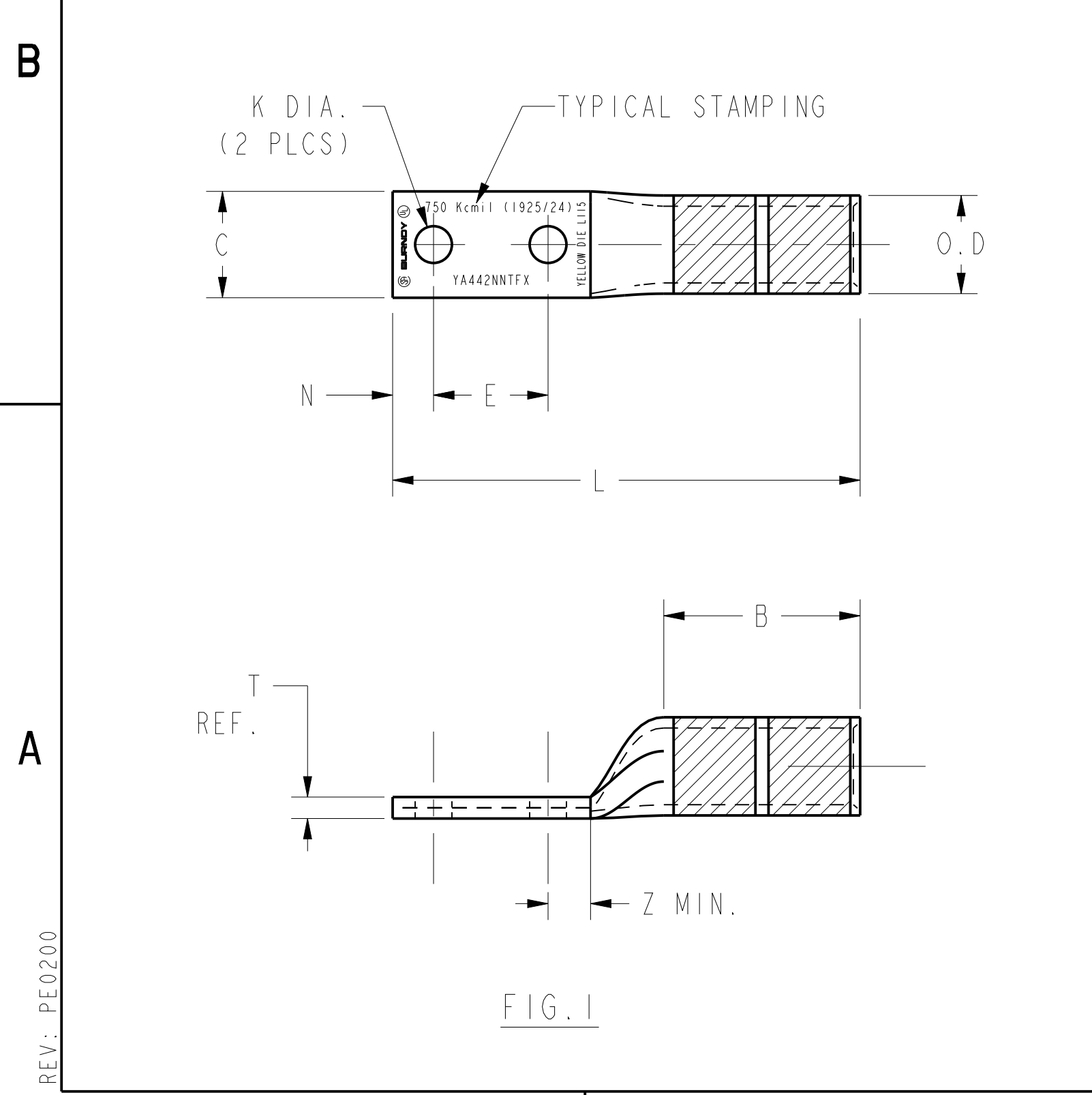


REV	DATE	DESCRIPTION	ECO	BY	C'K'R.
L	03/20/2017 00:00:00 AM	YA442TC38FX ADDED IN TABLE	46260	SM	MB

CATALOG NO.	CONDUCTOR SIZE	BOLT SIZE	FIG NO.	DIMENSIONS										INSTALLATION TOOLING (# CRIMPS)									
				B	C	E	H	K	L	N	O.D.	T	Z	COLOR CODE	DIE INFORMATION		MECHANICAL		HYDRAULIC			DIELESS (# CRIMPS)	WIRE STRIP LENGTH
				±.09	±.06	±.02	REF.	±.02	±.15	±.06	±.01	REF.	MIN.		DIE INDEX	TYPE	MD7-34R	BCT500 Y500CT PAT600	Y35, Y39, Y750 BAT750, PAT750	Y45	Y46		
YA342NTCFX	373.7 kcmil 925/24 (350 kcmil FLEX)	1/2	1	2.25 [57]	1.55 [39]	1.75 [44]	---	.56 [14]	6.08 [154]	.63 [16]	1.06 [27]	.23 [6]	.65 [17]	BLUE	19 OR 470	DIE SET	W32VT (4)	W32VT (4) W32RT (4)	U32RT (4)	U32RT (4)	U32RT (4)	HYDRAULIC: Y644, Y644M Y644MBH, BAT644M PAT644M (1) PAT81KFT (2) Y81KFT (2) PAT4PC834 (2) Y4PC834 (2)	2-516
YA382TC38FX	535.3 kcmil 1325/24 (500 kcmil FLEX)	3/8	1	2.81 [71]	1.84 [47]	1.00 [25]	---	.41 [10]	5.77 [147]	.50 [13]	1.25 [32]	.27 [7]	.53 [13]	PINK	L99	DIE SET	---	---	U38XRT (4) U38XRTWE (4)	U38XRT (4) U38XRTWE (4)	U38XRT (4) U38XRTWE (4)		3-3/16
YA382TC38FX45		3/8	2	2.81 [71]	1.84 [47]	1.00 [25]	3.60 [91]	.41 [10]	5.29 [134]	.50 [13]	1.25 [32]	.27 [7]	.53 [13]	PINK	L99	DIE SET	---	---	U38XRT (4) U38XRTWE (4)	U38XRT (4) U38XRTWE (4)	U38XRT (4) U38XRTWE (4)		3-3/16
YA382TC38FX90		3/8	3	2.81 [71]	1.84 [47]	1.00 [25]	4.21 [107]	.41 [10]	2.84 [72]	.50 [13]	1.25 [32]	.27 [7]	.53 [13]	PINK	L99	DIE SET	---	---	U38XRT (4) U38XRTWE (4)	U38XRT (4) U38XRTWE (4)	U38XRT (4) U38XRTWE (4)		3-3/16
YA382TC38E10FX		3/8	1	2.81 [71]	1.84 [47]	1.25 [32]	---	.41 [10]	6.02 [153]	.50 [13]	1.25 [32]	.27 [7]	.53 [13]	PINK	L99	DIE SET	---	---	U38XRT (4) U38XRTWE (4)	U38XRT (4) U38XRTWE (4)	U38XRT (4) U38XRTWE (4)		3-3/16
YA382TC38E10FX45		3/8	2	2.81 [71]	1.84 [47]	1.25 [32]	3.60 [91]	.41 [10]	5.54 [141]	.50 [13]	1.25 [32]	.27 [7]	.53 [13]	PINK	L99	DIE SET	---	---	U38XRT (4) U38XRTWE (4)	U38XRT (4) U38XRTWE (4)	U38XRT (4) U38XRTWE (4)		3-3/16
YA382TC38E10FX90		3/8	3	2.81 [71]	1.84 [47]	1.25 [32]	4.21 [107]	.41 [10]	3.09 [78]	.50 [13]	1.25 [32]	.27 [7]	.53 [13]	PINK	L99	DIE SET	---	---	U38XRT (4) U38XRTWE (4)	U38XRT (4) U38XRTWE (4)	U38XRT (4) U38XRTWE (4)		3-3/16
YA382NTCFX		1/2	1	2.81 [71]	1.84 [47]	1.75 [44]	---	.56 [14]	6.77 [172]	.63 [16]	1.25 [32]	.27 [7]	.65 [17]	PINK	L99	DIE SET	---	---	U38XRT (4) U38XRTWE (4)	U38XRT (4) U38XRTWE (4)	U38XRT (4) U38XRTWE (4)		3-3/16
YA382NTCFX45		1/2	2	2.81 [71]	1.84 [47]	1.75 [44]	3.60 [91]	.56 [14]	6.29 [160]	.63 [16]	1.25 [32]	.27 [7]	.65 [17]	PINK	L99	DIE SET	---	---	U38XRT (4) U38XRTWE (4)	U38XRT (4) U38XRTWE (4)	U38XRT (4) U38XRTWE (4)		3-3/16
YA382NTCFX90		1/2	3	2.81 [71]	1.84 [47]	1.75 [44]	4.21 [107]	.56 [14]	3.84 [98]	.63 [16]	1.25 [32]	.27 [7]	.65 [17]	PINK	L99	DIE SET	---	---	U38XRT (4) U38XRTWE (4)	U38XRT (4) U38XRTWE (4)	U38XRT (4) U38XRTWE (4)		3-3/16
YA382NT38FX	3/8	1	2.81 [71]	1.63 [41]	1.00 [25]	---	.41 [10]	5.77 [147]	.50 [13]	1.25 [32]	.27 [7]	.53 [13]	PINK	L99	DIE SET	---	---	U38XRT (4) U38XRTWE (4)	U38XRT (4) U38XRTWE (4)	U38XRT (4) U38XRTWE (4)	3-3/16		
YA382NT38FX45	3/8	2	2.81 [71]	1.63 [41]	1.00 [25]	3.60 [91]	.41 [10]	5.29 [134]	.50 [13]	1.25 [32]	.27 [7]	.53 [13]	PINK	L99	DIE SET	---	---	U38XRT (4) U38XRTWE (4)	U38XRT (4) U38XRTWE (4)	U38XRT (4) U38XRTWE (4)	3-3/16		
YA382NT38FX90	3/8	3	2.81 [71]	1.63 [41]	1.00 [25]	4.21 [107]	.41 [10]	2.84 [72]	.50 [13]	1.25 [32]	.27 [7]	.53 [13]	PINK	L99	DIE SET	---	---	U38XRT (4) U38XRTWE (4)	U38XRT (4) U38XRTWE (4)	U38XRT (4) U38XRTWE (4)	3-3/16		
YA382NNTFX	1/2	1	2.81 [71]	1.63 [41]	1.75 [44]	---	.56 [14]	6.77 [172]	.63 [16]	1.25 [32]	.27 [7]	.65 [17]	PINK	L99	DIE SET	---	---	U38XRT (4) U38XRTWE (4)	U38XRT (4) U38XRTWE (4)	U38XRT (4) U38XRTWE (4)	3-1/16		
YA382NNTFX45	1/2	2	2.81 [71]	1.63 [41]	1.75 [44]	3.60 [91]	.56 [14]	6.29 [160]	.63 [16]	1.25 [32]	.27 [7]	.65 [17]	PINK	L99	DIE SET	---	---	U38XRT (4) U38XRTWE (4)	U38XRT (4) U38XRTWE (4)	U38XRT (4) U38XRTWE (4)	3-1/16		
YA382NNTFX90	1/2	3	2.81 [71]	1.63 [41]	1.75 [44]	4.21 [107]	.56 [14]	3.84 [98]	.63 [16]	1.25 [32]	.27 [7]	.65 [17]	PINK	L99	DIE SET	---	---	U38XRT (4) U38XRTWE (4)	U38XRT (4) U38XRTWE (4)	U38XRT (4) U38XRTWE (4)	3-1/16		
YA382ENT38FX	3/8	1	2.81 [71]	1.35 [34]	1.00 [25]	---	.41 [10]	5.77 [147]	.50 [13]	1.25 [32]	.27 [7]	.53 [13]	PINK	L99	DIE SET	---	---	U38XRT (4) U38XRTWE (4)	U38XRT (4) U38XRTWE (4)	U38XRT (4) U38XRTWE (4)	3-1/16		
YA382ENT38FX45	3/8	2	2.81 [71]	1.35 [34]	1.00 [25]	3.60 [91]	.41 [10]	5.29 [134]	.50 [13]	1.25 [32]	.27 [7]	.53 [13]	PINK	L99	DIE SET	---	---	U38XRT (4) U38XRTWE (4)	U38XRT (4) U38XRTWE (4)	U38XRT (4) U38XRTWE (4)	3-1/16		
YA382ENT38FX90	3/8	3	2.81 [71]	1.35 [34]	1.00 [25]	4.21 [107]	.41 [10]	2.84 [72]	.50 [13]	1.25 [32]	.27 [7]	.53 [13]	PINK	L99	DIE SET	---	---	U38XRT (4) U38XRTWE (4)	U38XRT (4) U38XRTWE (4)	U38XRT (4) U38XRTWE (4)	3-1/16		



- NOTES:
- MATERIAL: COPPER TUBING
  - FINISH: ELECTRO-TIN PLATED.
  - CATALOG # PT6515 ADAPTOR IS REQUIRED TO USE "U" DIES IN Y45 SERIES TOOLS.
  - CATALOG # PUADPI ADAPTOR IS REQUIRED TO USE "U" DIES IN Y46 SERIES TOOLS.
  - THIS DIE SET MAKES HEXAGONAL CRIMPS.
  - CONNECTORS ARE UL LISTED.
  - CONNECTORS ARE CSA CERTIFIED.
  - DIMENSIONS IN BRACKETS [ ] ARE IN MILLIMETERS ROUNDED OFF TO THE NEAREST MILLIMETER, UNLESS OTHERWISE NOTED, METRIC DIMENSIONS ARE FOR REFERENCE ONLY.
  - FOR LEAD PLATED VERSIONS, REPLACE THE SUFFIX "FX" WITH SUFFIX "LD" (EXAMPLE: YA382NTCLD)
  - SUFFIX "U" ON THE CATALOGUE NUMBER END SIGNALS FOR UNDRILLED TONGUE.

TO ORDER BURNDY® PRODUCTS CALL

UNITED STATES  
1-800-346-4175 (LONDONDERRY, NH)

CANADA:  
1-800-361-6975 (QUEBEC)  
1-800-387-6487 (ALL OTHER PROVINCES)

FOR PRODUCT INFO: <http://www.burndy.com>

HYLUG™(NARROW TONGUE) FLEX	
ITEM NO:	N/A
CAT. NO:	YA---2N---FX- (SEE TABLE)
DRAWN BY:	J. GAUDET 5/21/92
CHECKER:	K. HENRY 5/22/92
DSN APPVL:	C. PALAGI 5/22/92
MFG APPVL:	---
QA APPVL:	A. LLOYD 5/22/92
MKT APPVL:	---
PROD FAM:	CM&R COMPRESSION
PROJECT #:	---
DOCUMENT TYPE:	Sales
REL LEVEL:	Released

**BURNDY**

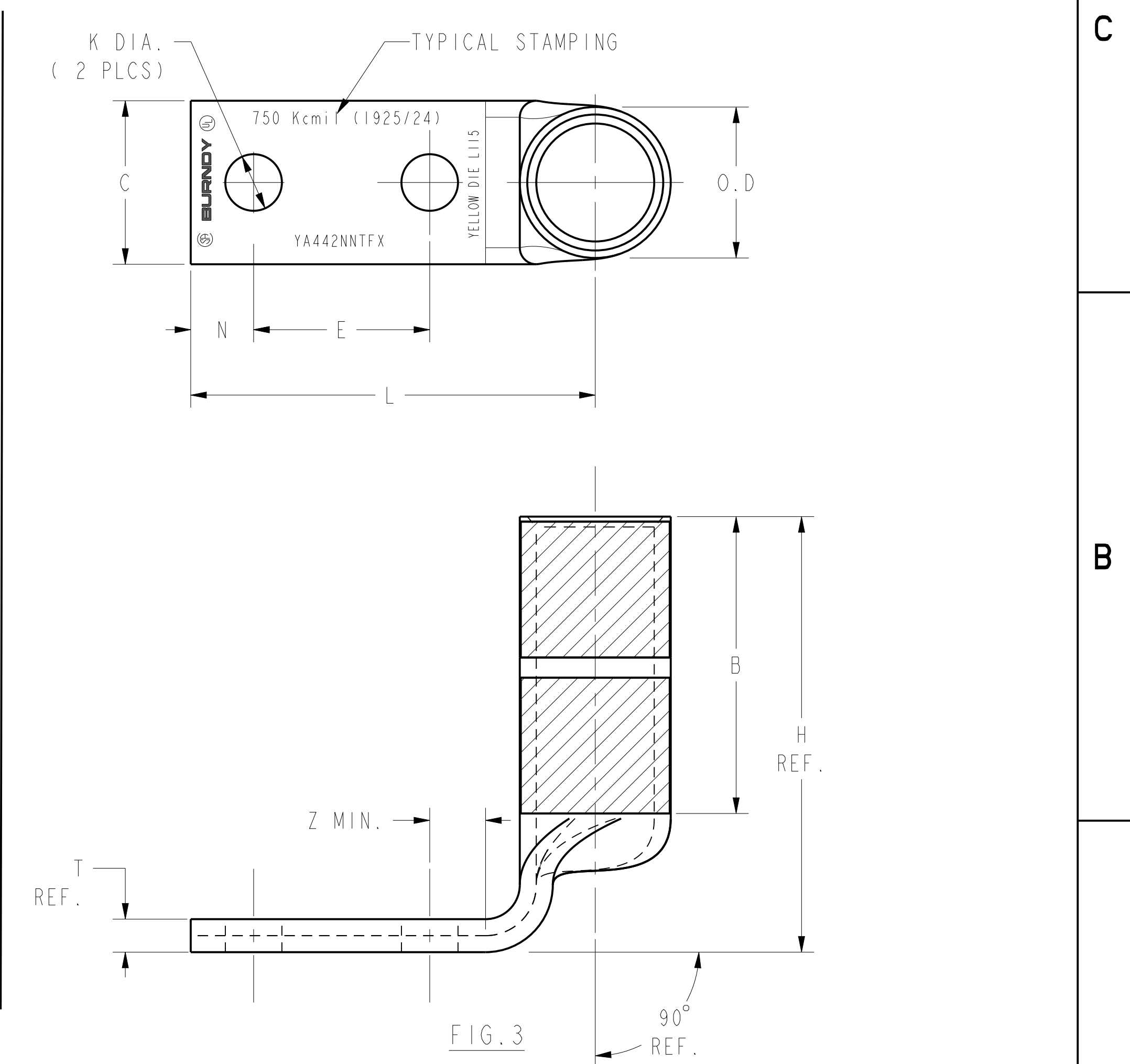
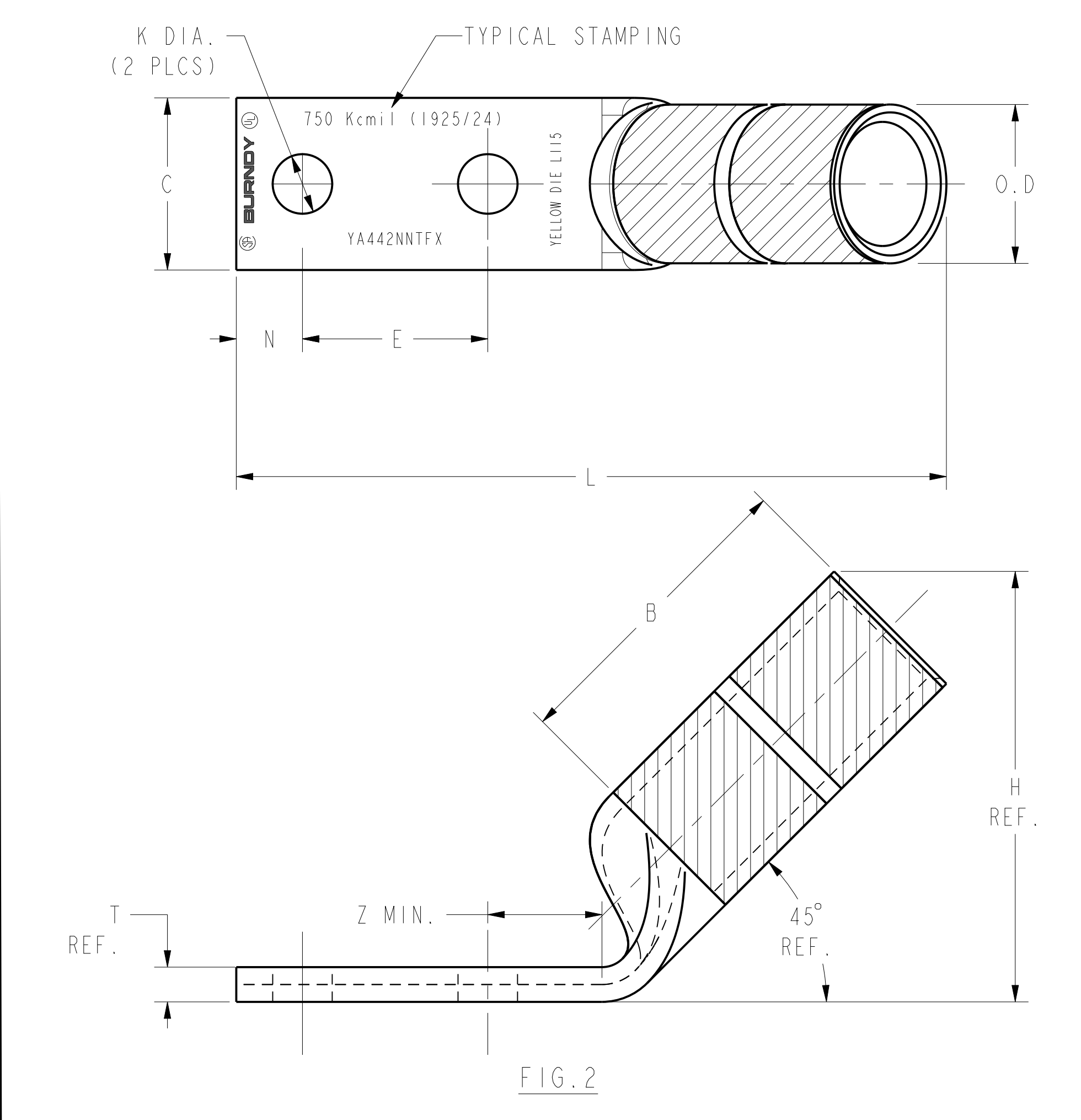
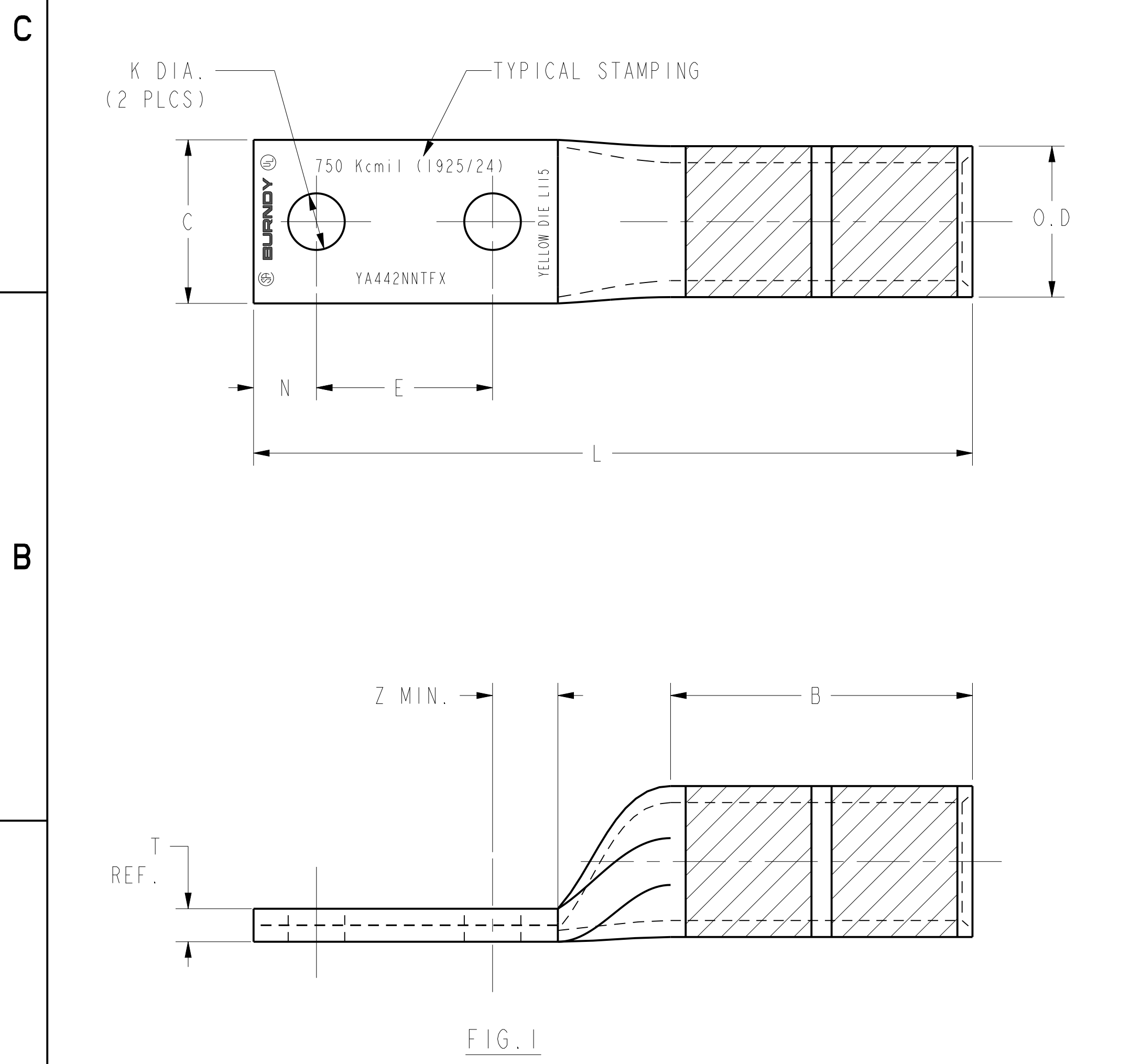
SCALE: 1:1

DRAWING NO: SD207814

SHEET 1 OF 2

REV	DATE	DESCRIPTION	ECO	BY	C.H.K.
L	03/20/2017 00:00:00 AM	YA442TC38FX ADDED IN TABLE	46260	SM	MB

CATALOG NO.	CONDUCTOR SIZE	BOLT SIZE	FIG NO.	DIMENSIONS										INSTALLATION TOOLING (# CRIMPS)									
				B	C	E	H	K	L	N	O.D.	T	Z	COLOR CODE	DIE INFORMATION		MECHANICAL		HYDRAULIC		DIELESS (# CRIMPS)	WIRE STRIP LENGTH	
				±.09	±.06	±.02	REF.	±.02	±.15	±.06	±.01	REF.	MIN.		DIE INDEX	TYPE	MD7-34R	BCT500 Y500CT PAT600	Y35, Y39, Y750 BAT750, PAT750	Y45			Y46
YA442NT38FX	777.7 kcmil 1925/24 (750 kcmil FLEX)	3/8	1	3.00 [76]	1.63 [41]	1.00 [25]	---	.40 [10]	6.14 [156]	.50 [13]	1.50 [38]	.41 [10]	.44 [11]	YELLOW	L115	DIE SET	---	---	U44XRT (4) UR4141WE (4)	U44XRT (4) UR4141WE (4)	U44XRT (4) UR4141WE (4)	HYDRAULIC:	3-1/16
YA442NNTFX		1/2	1	3.00 [76]	1.63 [41]	1.75 [44]	---	.56 [14]	7.14 [181]	.63 [16]	1.50 [38]	.32 [8]	.65 [17]	YELLOW	L115	DIE SET	---	---	U44XRT (4) UR4141WE (4)	U44XRT (4) UR4141WE (4)	U44XRT (4) UR4141WE (4)		3-1/16
YA442NNTFX45		1/2	2	3.00 [76]	1.63 [41]	1.75 [44]	4.17 [106]	.56 [14]	6.69 [170]	.63 [16]	1.50 [38]	.32 [8]	.65 [17]	YELLOW	L115	DIE SET	---	---	U44XRT (4) UR4141WE (4)	U44XRT (4) UR4141WE (4)	U44XRT (4) UR4141WE (4)	Y644, Y644M Y644MBH, BAT644M PAT644M (1)	3-1/16
YA442NNTFX90		1/2	3	3.00 [76]	1.63 [41]	1.75 [44]	4.69 [119]	.56 [14]	4.01 [102]	.63 [16]	1.50 [38]	.32 [8]	.65 [17]	YELLOW	L115	DIE SET	---	---	U44XRT (4) UR4141WE (4)	U44XRT (4) UR4141WE (4)	U44XRT (4) UR4141WE (4)	PAT81KFT (2) Y81KFT (2) PAT4PC834 (2) Y4PC834 (2)	3-1/16
YA442NTCFX		1/2	1	3.00 [76]	2.18 [55]	1.75 [44]	---	.56 [14]	7.14 [181]	.63 [16]	1.50 [38]	.32 [8]	.65 [17]	YELLOW	L115	DIE SET	---	---	U44XRT (4) UR4141WE (4)	U44XRT (4) UR4141WE (4)	U44XRT (4) UR4141WE (4)		3-1/16
YA442NTCFXU		1/2	1	3.00 [76]	2.18 [55]	---	---	---	---	---	---	---	---	---	---	---	---	---	---	---	---		3-1/16
YA442TC38FX		3/8	1	3.00 [76]	2.19 [56]	1.00 [25]	---	.41 [10]	6.14 [156]	.50 [13]	1.50 [38]	.33 [8]	.44 [11]	YELLOW	L115	DIE SET	---	---	U44XRT (4) UR4141WE (4)	U44XRT (4) UR4141WE (4)	U44XRT (4) UR4141WE (4)		3-1/16



REV: PEO200

SEE SHEET ONE FOR NOTES

TO ORDER BURNDY® PRODUCTS CALL		HYLUG™ (NARROW TONGUE) FLEX	
UNITED STATES 1-800-346-4175 (LONDONDERRY, NH)		ITEM NO: N/A	CAT. NO: YA---2N---FX- (SEE TABLE)
CANADA: 1-800-361-6975 (QUEBEC) 1-800-387-6487 (ALL OTHER PROVINCES)		DRAWN BY: R. BOISVERT 03/05/09	CHECKER: J. MICHAUD 03/09/09
FOR PRODUCT INFO: <a href="http://www.burndy.com">http://www.burndy.com</a>		DSN APPVL: J. MICHAUD 02/26/09	MFG APPVL: --
		QA APPVL: J. BRODEUR 03/03/09	MKT APPVL: J. SYLVIA 02/24/09
		PROD FAM: CM&R COMPRESSION	DRAWING NO: SD207814
		PROJECT #: --	SCALE: 1:1
		DOCUMENT TYPE: Sales	REV: L
		REL LEVEL: Released	SHEET 2 OF 2