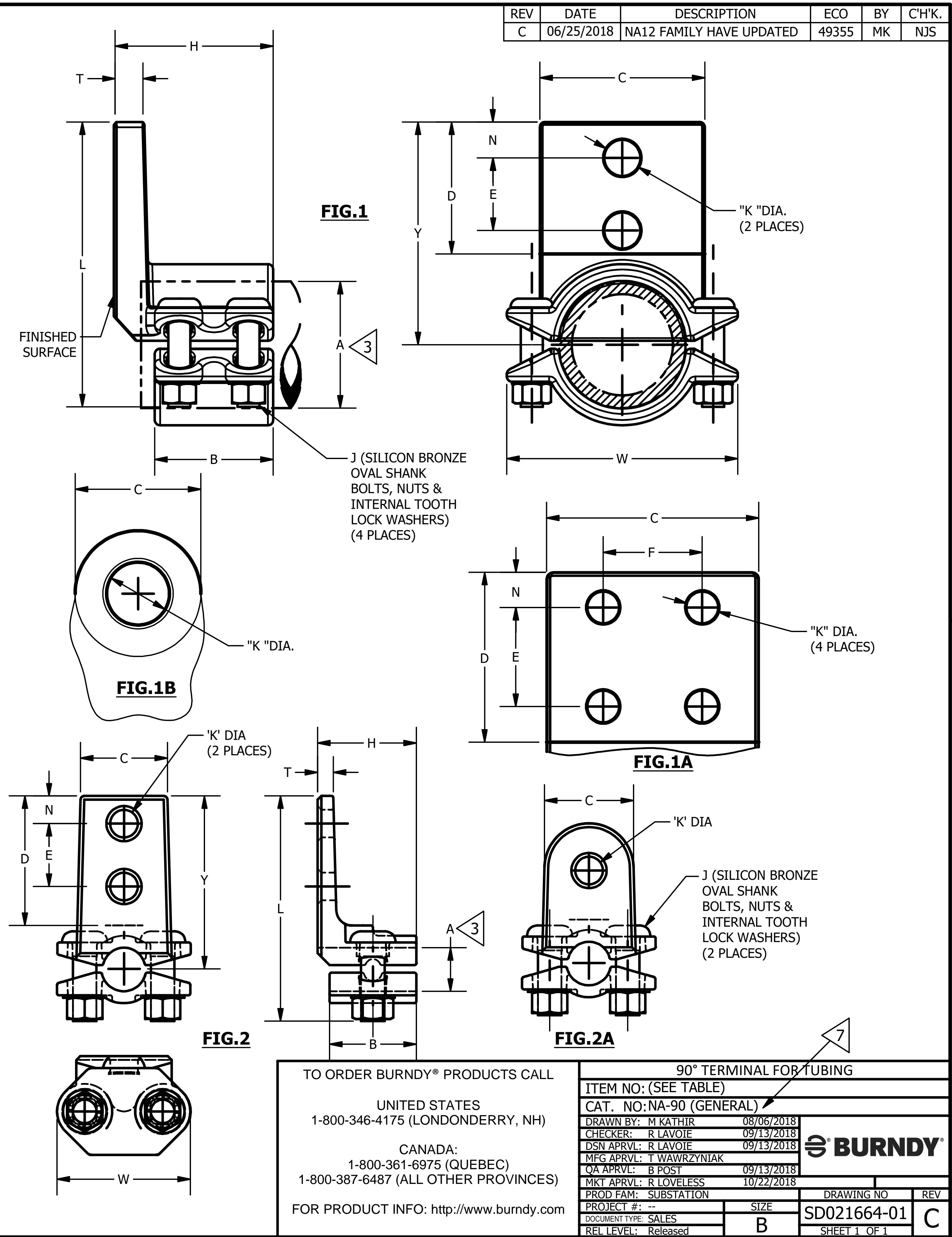


CATALOG NO.	ITEM NO.	ACCOMMODATES "A"	FIG NO	NO. OF HOLES IN PAD	B	C	D	E & F	H	J	K	L	N	T	W	Y		
NA1290	50031326	3/8" (.675 [17] DIA.)	2A	1	1.38 [35]	1.50 [38]	-	-	2.44 [62]	.38 [10]	.44 [11]	3.06 [78]	.75 [19]	.25 [6]	2.12 [54]	2.22 [56]		
NA12290	50031327		2	2		1.88 [48]	1.00 [25]				.44 [11]	3.44 [87]	.44 [11]				2.59 [66]	
NA122N90	50093043		2	2		1.38 [35]	3.00 [76]	1.75 [44]				.56 [14]	3.58 [91]			.62 [16]		2.75 [70]
NA122N90W	290103		2	2		3.00 [76]	1.75 [44]											
NA1390	50031328	1/2" (.840 [21] DIA.)	1B	1	2.00 [51]	1.62 [41]	-	-	2.50 [64]	.38 [10]	.56 [14]	3.41 [87]	.81 [21]	.31 [8]	2.25 [57]	2.44 [62]		
NA13290	50031329		1	2		1.50 [41]	2.00 [51]	1.12 [28]				.44 [11]	3.81 [97]			.44 [11]		2.83 [72]
NA132N90	000341		1	2		1.50 [41]	3.00 [76]	1.75 [44]				.56 [14]	4.81 [122]			.62 [16]		3.83 [97]
NA1490	50031330	3/4" (1.050 [27] DIA.)	1B	1	2.00 [51]	1.75 [44]	-	-	2.56 [65]	.38 [10]	.56 [14]	3.78 [96]	.88 [22]	.38 [10]	2.44 [62]	2.69 [68]		
NA14290	50031331		1	2		1.62 [41]	2.25 [57]	1.38 [35]				.44 [11]	4.28 [109]			.44 [11]		3.19 [81]
NA142N90	290140		1	2		1.62 [41]	3.00 [76]	1.75 [44]				.56 [14]	5.03 [128]			.62 [16]		3.94 [100]
NA144N90	290244		1A	4		3.00 [76]	3.00 [76]	1.75 [44]					5.09 [129]					4.00 [102]
NA15290	50031332	1" (1.315 [33] DIA.)	1	2	2.69 [68]	1.88 [48]	2.25 [57]	1.38 [35]	3.38 [86]	.50 [13]	.44 [11]	4.47 [114]	.44 [11]	.50 [13]	2.75 [70]	3.38 [86]		
NA152N90	2900MN		1	2		1.88 [48]	3.00 [76]	1.75 [44]				.56 [14]	5.21 [132]			.62 [16]		4.12 [105]
NA15490	50031333		1A	4		2.25 [57]	2.25 [57]	1.38 [35]				.44 [11]	4.47 [114]			.44 [11]		3.38 [86]
NA154N90	290034		1A	4		3.00 [76]	3.00 [76]	1.75 [44]					5.21 [132]			.62 [16]		4.12 [105]
NA162N90	290056	1 1/4" (1.660 [42] DIA.)	1	2	2.69 [68]	2.25 [57]	3.00 [76]	1.75 [44]	3.31 [84]	.56 [14]	.56 [14]	5.72 [145]	.62 [16]	.44 [11]	3.50 [89]	4.13 [105]		
NA16490	50031334		1A	4		2.50 [64]	2.50 [64]	1.62 [41]				.44 [11]	5.22 [133]			.44 [11]		3.81 [97]
NA164N90	290040		1A	4		3.00 [76]	3.00 [76]	1.75 [44]					5.84 [148]			.62 [16]		4.31 [109]
NA172N90	290163		1	2		2.50 [64]	3.00 [76]	1.75 [44]					5.86 [149]					4.44 [113]
NA17490	50031335	1 1/2" (1.900 [48] DIA.)	1A	4	2.69 [68]	2.62 [67]	2.62 [67]	1.50 [38]	3.38 [86]	.50 [13]	5.47 [139]	.56 [15]		.50 [13]	3.94 [100]	4.06 [103]		
NA174N90	290SXU		1A	4		3.00 [76]	3.00 [76]	1.75 [44]					5.86 [149]			.62 [16]		4.44 [112]
NA18290	50031336	2 (2.375 [60] DIA.)	1	2	2.69 [68]	2.75 [70]	3.50 [89]	2.00 [51]	3.44 [87]	.56 [14]	6.69 [170]	.75 [19]		.56 [14]	4.62 [118]	5.28 [134]		
NA182N90	290288		1	2		2.75 [70]	3.00 [76]	1.75 [44]					6.19 [157]			.62 [16]		4.78 [121]
NA18490	50031337		1A	4		3.12 [80]	3.12 [79]	1.50 [38]					6.31 [160]			.81 [21]		4.91 [125]
NA184N90	290130		1A	4		3.00 [76]	3.00 [76]	1.75 [44]					6.19 [157]			.62 [16]		4.78 [121]
NA19290	50031338	2 1/2" (2.875 [73] DIA.)	1	2	3.25 [83]	3.00 [76]	4.00 [102]	2.38 [60]	3.62 [92]	.62 [16]	6.47 [164]	.81 [21]		.69 [18]	5.25 [133]	6.06 [154]		
NA19490	50031339		1A	2		3.75 [95]	3.75 [95]	2.00 [51]					7.22 [183]			.88 [22]		5.81 [148]
NA194N90	290070		1A	2		3.00 [76]	3.00 [76]	1.75 [44]					6.47 [164]			.62 [16]		5.06 [129]
NA20490	50031340	3" (3.500 [89] DIA.)	1A	4	3.25 [83]	4.38 [111]	4.38 [111]	2.50 [64]	4.19 [106]	.62 [16]	8.62 [219]	.94 [24]		.62 [16]	6.07 [154]	6.78 [172]		
NA204N90	27014017		1A	4		4.38 [111]	3.00 [76]	1.75 [44]					7.25 [184]			.62 [16]		5.41 [137]
NA2044N90	25004443		1A	4		4.00 [102]	4.00 [102]						8.86 [225]			1.12 [29]		6.69 [170]
NA21490	50031341	3 1/2" (4.000 [102] DIA.)	1A	4	3.25 [83]	4.75 [121]	4.75 [121]	2.75 [70]	4.31 [109]	.62 [16]	9.28 [236]	1.00 [25]		.81 [21]	7.44 [189]	7.44 [189]		
NA214N90	290386		1A	4		4.75 [121]	3.00 [76]	1.75 [44]					7.53 [191]			.62 [16]		5.69 [145]
NA22490	50031342	4" (4.500 [114] DIA.)	1A	4	3.25 [83]	5.25 [133]	5.25 [133]	3.12 [79]	4.31 [109]	.62 [16]	10.06 [156]	1.06 [27]		.81 [21]	7.44 [189]	8.22 [209]		
NA224N90	50031343		1A	4		3.00 [76]	3.00 [76]	1.75 [44]					7.81 [198]			.62 [16]		5.97 [152]

NOTES:

- MATERIAL: CAST COPPER ALLOY
- FINISH: BRIGHT DIPPED
- ACCOMMODATES: SEE TABLE
- NOMINAL BOLT INSTALLATION TORQUE:  
1/2" SILICON BRONZE HARDWARE - 480 LB-IN [55 Nm]  
3/8" SILICON BRONZE HARDWARE - 240 LB-IN [30 Nm]  
5/8" SILICON BRONZE HARDWARE - 660 LB-IN [75 Nm]
- DIMENSIONS IN BRACKETS [ ] DENOTES METRIC UNITS [SI UNITS] AND ARE ROUNDED TO THE NEAREST WHOLE NUMBER. UNLESS OTHERWISE SPECIFIED THESE UNITS SHALL BE USED FOR REFERENCE ONLY.
- MARKING:  
BURNDY  
---(CATALOG NUMBER)  
---(ACCOMMODATES)
- PLATING OPTIONS: CONTACT BURNDY FOR OTHER AVAILABLE PLATING OPTIONS. ADD SUFFIX TN FOR TIN PLATED BODY AND CAP ONLY. ADD SUFFIX W FOR TIN PLATED BODY AND CAP WITH TIN PLATED HARDWARE. ADD SUFFIX SV FOR SILVER PLATING.



TO ORDER BURNDY® PRODUCTS CALL

UNITED STATES  
1-800-346-4175 (LONDONDERRY, NH)

CANADA:  
1-800-361-6975 (QUEBEC)  
1-800-387-6487 (ALL OTHER PROVINCES)

FOR PRODUCT INFO: <http://www.burndy.com>

90° TERMINAL FOR TUBING

ITEM NO: (SEE TABLE)  
CAT. NO: NA-90 (GENERAL)

DRAWN BY: M KATHIR	08/06/2018
CHECKER: R LAVOIE	09/13/2018
DSN APRVL: R LAVOIE	09/13/2018
MFG APRVL: T WAWRZYNIAK	
QA APRVL: B POST	09/13/2018
MKT APRVL: R LOVELESS	10/22/2018

PROD FAM: SUBSTATION      DRAWING NO: SD021664-01      REV: C

PROJECT #: --      SIZE: B      SHEET 1 OF 1

DOCUMENT TYPE: SALES      REL LEVEL: Released