

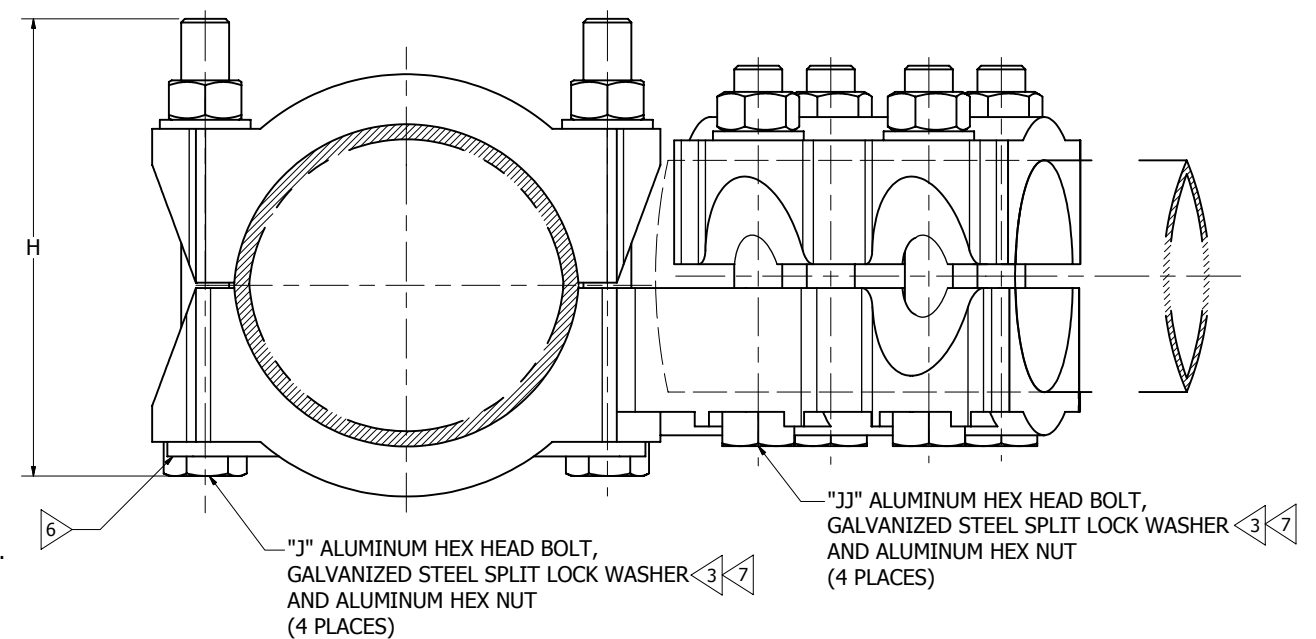
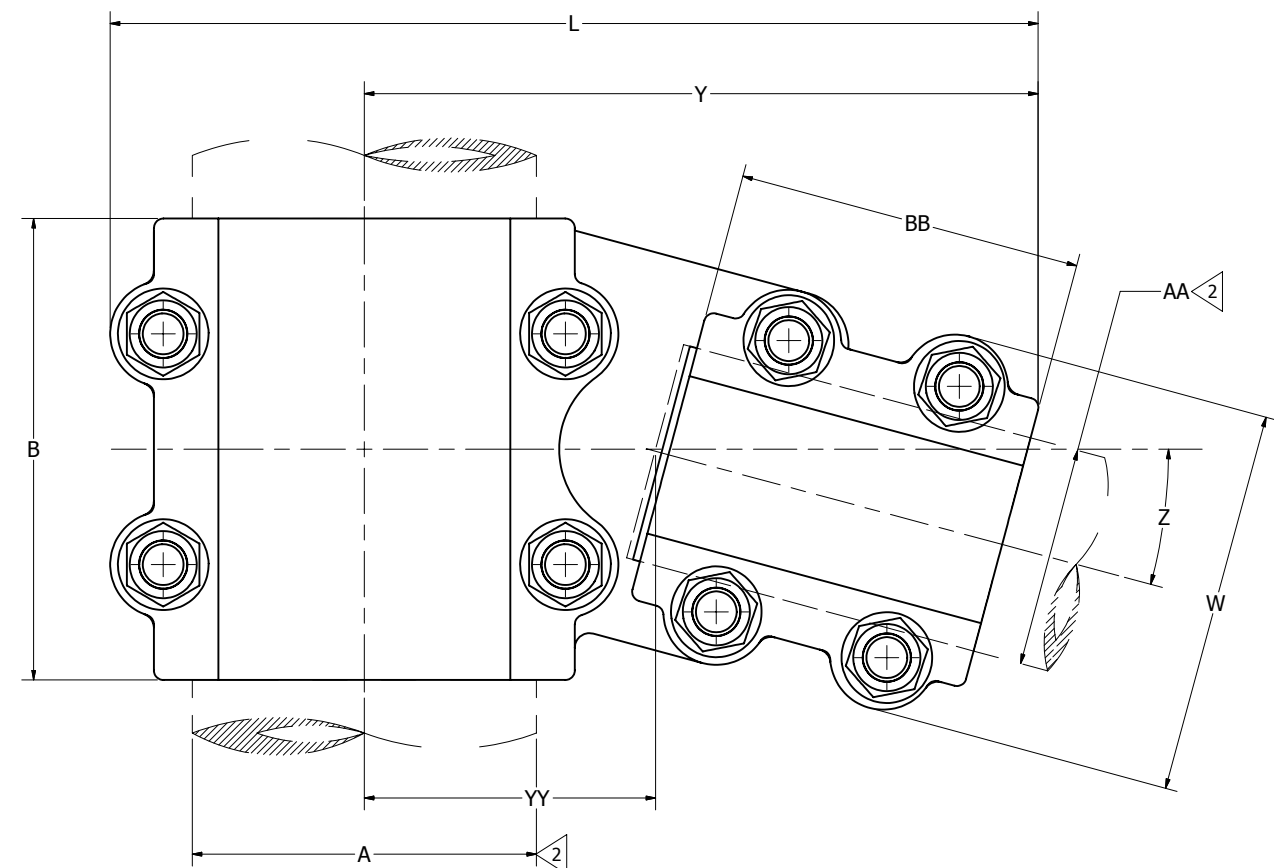
ALUM. IPS		CATALOG NUMBER	B	BB	H	J	JJ	L	W	Y	YY	Z (DEG)
RUN 'A'	TAP 'AA'											
3 1/2" I.P.S. (4.000 DIA.) ALUM. TUBE	2" I.P.S. (2.375 DIA.) ALUM. TUBE	NNT21A18A80	5.50 [140]	4.25 [108]	5.56 [141]	5/8"-11	5/8"-11	11.16 [283]	4.50 [114]	8.06 [205]	3.44 [87]	10
4" I.P.S. (4.000 DIA.) ALUM. TUBE	2" I.P.S. (2.375 DIA.) ALUM. TUBE	NNT22A18A80	6.00 [152]	4.25 [108]	6.19 [157]	5/8"-11	5/8"-11	11.65 [296]	4.50 [114]	8.34 [212]	3.72 [95]	10
5" I.P.S. (5.563 DIA.) ALUM. TUBE	2 1/2" I.P.S. (2.875 DIA.) ALUM. TUBE	NNT24A19A80	4.75 [121]	4.50 [114]	7.09 [180]	5/8"-11	5/8"-11	13.12 [333]	5.00 [127]	9.25 [235]	4.25 [108]	10
4" I.P.S. (4.500 DIA.) ALUM. TUBE	2 1/2" I.P.S. (2.875 DIA.) ALUM. TUBE	NNT22A19A80	6.00 [152]	4.50 [114]	6.19 [157]	5/8"-11	5/8"-11	12.04 [306]	5.00 [127]	8.73 [222]	3.72 [94]	10
70MM (2.760 DIA.) ALUM. TUBE	70MM (2.760 DIA.) ALUM. TUBE	NNT188A188A80	4.50 [114]	4.50 [114]	4.91 [125]	5/8"-11	5/8"-11	10.25 [230]	4.88 [124]	7.81 [198]	2.78 [71]	10
2 1/2" I.P.S. (2.875 DIA.) ALUM. TUBE	1 1/2" I.P.S. (1.900 DIA.) ALUM. TUBE	NNT19A17A75	4.00 [102]	4.00 [102]	4.39 [112]	1/2"-13	1/2"-13	9.69 [246]	3.62 [92]	7.50 [191]	3.56 [90]	15
5" I.P.S. (5.563 DIA.) ALUM. TUBE	2" I.P.S. (2.375 DIA.) ALUM. TUBE	NNT24A18AG2	6.00 [152]	4.25 [108]	6.94 [176]	5/8"-11	5/8"-11	12.62 [321]	4.50 [114]	9.12 [232]	4.25 [108]	10
4" I.P.S. (4.500 DIA.) ALUM. TUBE	2 1/2" I.P.S. (2.875 DIA.) ALUM. TUBE	NNT22A19A75	6.00 [152]	4.50 [114]	6.19 [157]	5/8"-11	5/8"-11	12.35 [314]	5.00 [127]	9.04 [230]	3.72 [94]	15
2 1/2" I.P.S. (2.875 DIA.) ALUM. TUBE	1 1/4" I.P.S. (1.660 DIA.) ALUM. TUBE	NNT19A16A80	4.00 [102]	3.75 [95]	4.38 [111]	1/2"-13	1/2"-13	9.53 [242]	3.44 [87]	7.06 [179]	3.06 [78]	10
4" I.P.S. (4.500 DIA.) ALUM. TUBE	2" I.P.S. (2.375 DIA.) ALUM. TUBE	NNT22A18A75	6.00 [152]	4.25 [108]	6.19 [157]	5/8"-11	5/8"-11	11.75 [298]	4.50 [114]	8.44 [214]	3.62 [92]	15
5" I.P.S. (5.563 DIA.) ALUM. TUBE	3" I.P.S. (3.500 DIA.) ALUM. TUBE	NNT24A20A80	6.00 [152]	5.00 [127]	6.94 [176]	5/8"-11	5/8"-11	13.72 [348]	5.62 [143]	9.87 [251]	4.53 [115]	10
3" I.P.S. (3.500 DIA.) ALUM. TUBE	3" I.P.S. (3.500 DIA.) ALUM. TUBE	NNT20A20A80	5.00 [127]	5.00 [127]	5.41 [137]	5/8"-11	5/8"-11	11.63 [295]	5.62 [143]	8.82 [224]	2.81 [71]	10
2" I.P.S. (2.375 DIA.) ALUM. TUBE	2" I.P.S. (2.375 DIA.) ALUM. TUBE	NNT18A18A80	4.25 [108]	4.25 [108]	4.40 [112]	5/8"-11	5/8"-11	9.50 [241]	4.50 [114]	7.25 [184]	2.54 [65]	10
2" I.P.S. (2.375 DIA.) ALUM. TUBE	2" I.P.S. (2.375 DIA.) ALUM. TUBE	NNT18A18A75	4.25 [108]	4.25 [108]	4.40 [112]	5/8"-11	5/8"-11	9.50 [241]	4.50 [114]	7.25 [184]	2.54 [65]	15
3" I.P.S. (3.500 DIA.) ALUM. TUBE	2" I.P.S. (2.375 DIA.) ALUM. TUBE	NNT20A18A75	5.00 [127]	4.25 [108]	5.41 [137]	5/8"-11	5/8"-11	10.34 [263]	4.50 [114]	7.52 [191]	2.81 [71]	15
3 1/2" I.P.S. (4.000 DIA.) ALUM. TUBE	1 1/4" I.P.S. (1.660 DIA.) ALUM. TUBE	NNT21A16A75	4.00 [102]	3.75 [95]	5.56 [141]	1/2"-13	1/2"-13	10.28 [261]	3.41 [87]	7.41 [188]	3.00 [76]	15

NOTES:

- MATERIAL: CAST ALUMINUM ALLOY
- ACCOMMODATES : SEE TABLE
- HARDWARE FOR CAT. NO.NNT24A18AG2 TO BE STAINLESS STEEL.
- SCRATCH BRUSH CONNECTOR CONTACT SURFACE DRY, THEN APPLY PENETROX™ A. PENETROX™ CAN BE PURCHASED FROM BURNDY LLC, IN CANS OR PLASTIC SQUEEZE BOTTLES.
- DIMENSIONS IN BRACKETS [] DENOTES METRIC UNITS [SI UNITS] AND ARE ROUNDED TO THE NEAREST WHOLE NUMBER. UNLESS OTHERWISE SPECIFIED THESE UNITS SHALL BE USED FOR REFERENCE ONLY.

- HEX BOLTS CAPTURED TO PREVENT TURNING DURING INSTALLATION.
- NOMINAL BOLT INSTALLATION TORQUE:
1/2" HEX. ALUMINUM HARDWARE : 300 LB-IN [35 Nm].
1/2" HEX. GALVANIZED STEEL & STAINLESS STEEL HARDWARE : 480 LB-IN [55 Nm].
5/8" HEX. ALUMINUM HARDWARE : 480 LB-IN [55 Nm].
5/8" HEX. GALVANIZED STEEL & STAINLESS STEEL HARDWARE : 660 LB-IN [75 Nm].
- OPTIONAL HARDWARE VARIATIONS ARE AVAILABLE BY ADDING THE FOLLOWING SUFFIX TO THE CATALOG NUMBER.
GS = GALVANIZED STEEL
SS = STAINLESS STEEL
SSDN = STAINLESS STEEL BOLTS, WASHERS & SILICON BRONZE NUTS.
EXAMPLE: NNT-A-A-GS

REV C	DATE 11/01/2016	DESCRIPTION FOCUS REQUEST FPN1610074	ECO 45254	BY CV	CHK. MB
----------	--------------------	---	--------------	----------	------------



TO ORDER BURNDY® PRODUCTS CALL		ANGLE 'T' CONNECTOR	
UNITED STATES 1-800-346-4175 (LONDONDERRY, NH)		ITEM NO: N/A	
CANADA: 1-800-361-6975 (QUEBEC) 1-800-387-6487 (ALL OTHER PROVINCES)		CAT. NO: NNT-A-A-75,NNT-A-A-80,NNT-A-A-G2 (TABLE)	
FOR PRODUCT INFO: http://www.burndy.com		DRAWN BY: --	
		CHECKER: D BOUDREAU 12/6/2012	
		DSN APRVL: NJ SUDHAKAR 1/12/2016	
		MFG APRVL: T WAWRZYNIAK 1/22/2016	
		QA APRVL: J HILLMAN 1/20/2016	
		MKT APRVL: B KEENAN 1/22/2016	
		PROD FAM:	
		PROJECT #: FPN1610074	
		DOCUMENT TYPE: SALES	
		REL LEVEL: Released	
		SIZE: D	
		DRAWING NO: SD029950-01	
		SHEET 1 OF 1	
		REV: C	