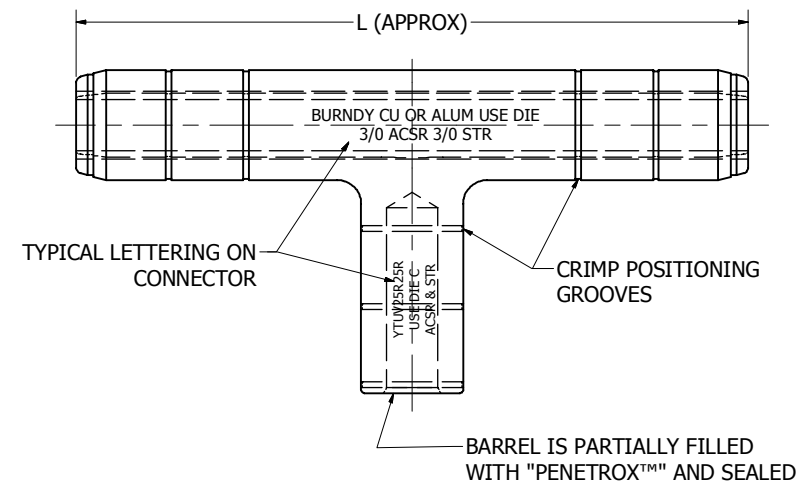
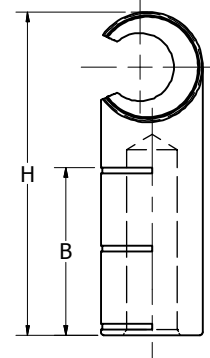
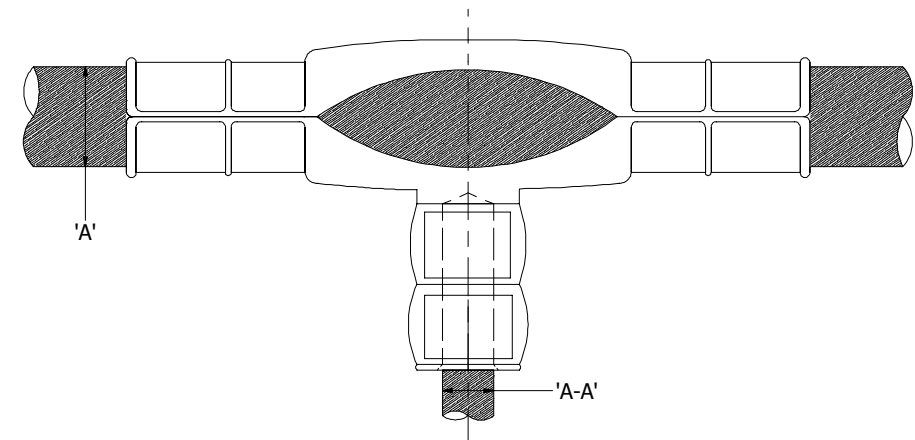


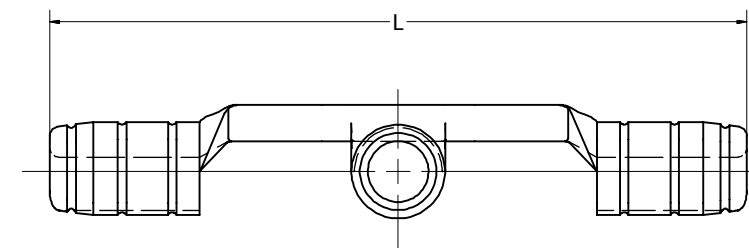
CATALOG NUMBER	CONDUCTOR RANGES						INSTALLATION DATA										B	H	L
	A RUN			A-A TAP			RUN					TAP							
	KAMIL OR AVG	TYPE	STRANDING	KAMIL ACSR OR AVG	KAMIL ALUM OR AVG	KAMIL COPPER OR AVG	DIE INDEX	MD6 MID7	PER END	HY-PRESS DIE SETS		DIE INDEX	MD6 DIESET & CRIMP	HY-PRESS DIESET		NO. OF CRIMP OPER.			
										Y35, Y70, Y45, Y46	CRIMP OPER PER END			Y35, Y70, Y45, Y46	NO. OF CRIMP OPER.				
YTU25R2W	10	ACSR	6-1	# 4 6-1,7-1 STR	# 4 7 STR	# 4 7 8 STR	C	W-C	2	U-C	1	BG	WBG	3	U-BG	1	.82	2.40	4.84
YTU25R2R	80	ALLUM. COPPER	7, 9, 12	# 2 6-1, 7-1 STR	# 2 STR	# 2,7 8 STR											[25]	[61]	[123]
YTU25R25R		ACSR	8-1	80 8-1 STR	10 7,9 STR	10 7,9,12 STR													
YTU26R2W		ACSR	6-1	# 4 6-1,7-1 STR	# 4 7 STR	# 4 7 8 STR	L	W-L	2		1	BG	WBG	3	U-BG	1	.97	2.41	5.00
YTU26R2R		ALLUM. COPPER	7, 9, 12	# 2 6-1, 7-1 STR	# 2 STR	# 2,7 8 STR											[25]	[61]	[127]
YTU26R25R	2/0	ACSR	7, 9, 12	10 6-1 STR	10 7,9 STR	10 7,9,12 STR													
YTU26R26R		ALLUM. COPPER	7, 9, 12	2/0 6-1 STR	2/0 7,9 STR	2/0 7,9,12 STR													
YTU26R25R G4		ACSR	7, 9, 12	2/0 6-1 STR	2/0 7,9 STR	2/0 7,9,12 STR													
YTU27R2W		ACSR	6-1	# 4 6-1,7-1 STR	# 4 7 STR	# 4 7 8 STR	L	W-L	2		1	G	W-G	3	U-BG	1	.97	2.41	5.00
YTU27R2R		ALLUM. COPPER	7, 9, 12	# 2 6-1, 7-1 STR	# 2 STR	# 2,7 8 STR											[25]	[61]	[127]
YTU27R25R	3/0	ACSR	7, 9, 12	10 6-1 STR	10 7,9 STR	10 7,9,12 STR													
YTU27R26R		ALLUM. COPPER	7, 9, 12	2/0 6-1 STR	2/0 7,9 STR	2/0 7,9,12 STR													
YTU27R27R		ALLUM. COPPER	7, 9, 12	3/0 6-1 STR	3/0 7,9 STR	3/0 7,9,12 STR													
YTU28R2W		ACSR	6-1	# 4 6-1,7-1 STR	# 4 7 STR	# 4 7 8 STR	L	-	-										
YTU28R2R		ALLUM. COPPER	7, 9, 12	# 2 6-1, 7-1 STR	# 2 STR	# 2,7 8 STR													
YTU28R25R	4/0	ACSR	7, 9, 12	10 6-1 STR	10 7,9 STR	10 7,9,12 STR													
YTU28R26R		ALLUM. COPPER	7, 9, 12	2/0 6-1 STR	2/0 7,9 STR	2/0 7,9,12 STR													
YTU28R27R		ALLUM. COPPER	7, 9, 12	3/0 6-1 STR	3/0 7,9 STR	3/0 7,9,12 STR													
YTU28R28R		ALLUM. COPPER	7, 9, 12	4/0 6-1 STR	4/0 7,9 STR	4/0 7,9,12 STR													
YTU28R28R G4		ALLUM. COPPER	7, 9, 12	4/0 6-1 STR	4/0 7,9 STR	4/0 7,9,12 STR													
YTU30R2W		ACSR	18-16,7,26-7	# 4 6-1,7-1 STR	# 4 7 STR	# 4 7 8 STR	M	-	-										
YTU30R2R	266.8	ALLUM. COPPER	7, 9, 37	# 2 6-1,7-1 STR	# 2 STR	# 2,7 8 STR													
YTU30R25R	300	ALLUM. COPPER	19,37	10 6-1 STR	10 7,9 STR	10 7,9,12 STR													
YTU30R26R	300	ALLUM. COPPER	19,37	2/0 6-1 STR	2/0 7,9 STR	2/0 7,9,12 STR													
YTU30R27R	250	ALLUM. COPPER	12, 19, 37	3/0 6-1 STR	3/0 7,9 STR	3/0 7,9,12 STR													
YTU30R28R	250	ALLUM. COPPER	12, 19, 37	4/0 6-1 STR	4/0 7,9 STR	4/0 7,9,12 STR													
YTU30R30R		ALLUM. COPPER	12, 19, 37	266.8 kamil 18-16,7, 26-7, STR	300 kamil 19,37 STR	300 kamil 19,37 STR													
YTU32R2W		ACSR	18-1	# 4 6-1,7-1 STR	# 4 7 STR	# 4 7 8 STR	M	-	-										
YTU32R2R	336.4	ALLUM. COPPER	19,37	# 2 6-1,7-1 STR	# 2 STR	# 2,7 8 STR													
YTU32R25R	336.4	ALLUM. COPPER	25,7	10 6-1 STR	10 7,9 STR	10 7,9,12 STR													
YTU32R26R	300	ALLUM. COPPER	19,37	2/0 6-1 STR	2/0 7,9 STR	2/0 7,9,12 STR													
YTU32R27R		ALLUM. COPPER	19,37	3/0 6-1 STR	3/0 7,9 STR	3/0 7,9,12 STR													
YTU32R28R	350	ALLUM. COPPER	19,37	4/0 6-1 STR	4/0 7,9 STR	4/0 7,9,12 STR													
YTU32R30R	350	ALLUM. COPPER	19,37	266.8 kamil 18-16,7, 26-7, STR	300 kamil 19,37 STR	300 kamil 19,37 STR													
YTU32R32R		ALLUM. COPPER	19,37	336.4 kamil 18-1 STR	350 kamil 19,37 STR	350 kamil 19,37 STR													
YTU33R2W		ACSR	26-7,30-7	# 4 6-1,7-1 STR	# 4 7 STR	# 4 7 8 STR	M	-	-										
YTU33R2R	336.4	ALLUM. COPPER	19,37	# 2 6-1,7-1 STR	# 2 STR	# 2,7 8 STR													
YTU33R25R	400	ALLUM. COPPER	19,37	10 6-1 STR	10 7,9 STR	10 7,9,12 STR													
YTU33R26R	400	ALLUM. COPPER	19,37	2/0 6-1 STR	2/0 7,9 STR	2/0 7,9,12 STR													
YTU33R27R	397.5	ALLUM. COPPER	19,37	3/0 6-1 STR	3/0 7,9 STR	3/0 7,9,12 STR													
YTU33R28R	397.5	ALLUM. COPPER	19,37	4/0 6-1 STR	4/0 7,9 STR	4/0 7,9,12 STR													
YTU33R30R		ALLUM. COPPER	19,37	266.8 kamil 18-16,7, 26-7, STR	300 kamil 19,37 STR	300 kamil 19,37 STR													
YTU33R32R		ALLUM. COPPER	19,37	336.4 kamil 18-1 STR	350 kamil 19,37 STR	350 kamil 19,37 STR													
YTU33R33R		ALLUM. COPPER	19,37	336.4 kamil 26,7,30-7 STR	400 kamil 19,37 STR	400 kamil 19,37 STR													
YTU33R4W		ALLUM. COPPER	19,37	397.5 kamil 18-1 STR	400 kamil 19,37 STR	400 kamil 19,37 STR													
YTU33R4W		ALLUM. COPPER	19,37	# 6 6-1 STR	# 6 7 STR	# 6 7 STR													



VIEW BEFORE INSTALLATION



VIEW AFTER INSTALLATION



YTU25R25R NOT RECOMMENDED FOR 1/0 CU. TO 1/0 CU. ◀ 4

NOTES:

- SCRATCH BRUSH CONDUCTOR & CONNECTOR CONTACT SURFACES DRY, THEN APPLY "PENETROX™-A". "PENETROX™-A" NOT INCLUDED IN CAT.NO., CAN BE PURCHASED FROM BURNDY® CORP. IN CANS OR PLASTIC SQUEEZE BOTTLES.
- INSERT CONDUCTOR IN CONNECTOR AND MAKE REQUIRED NUMBER OF CRIMPS STARTING AT CROTCH AND WORKING TOWARDS ENDS.
- SAME AS YTU26R26R EXCEPT WITH A PAPER LABEL READING: 1/0 ACSR 6-1 STR DIE INDEX 705.
- SAME AS YTU28R28R EXCEPT WITH A PAPER LABEL READING: MAY ALSO BE INSTALLED WITH T&B DIE 76
- RECOMMENDED PRIMARILY FOR JOINING ALL COMBINATIONS OF ALUMINUM, COPPER OR ACSR, RUN OR TAP. ALSO WHEN T-TAPS ARE USED FOR TRANSFORMER TAPS. T-TAPS ARE RECOMMENDED FOR THOSE APPLICATIONS WHERE THE TOTAL CURRENT THROUGH THE CONNECTOR DOES NOT EXCEED THE RATED CURRENT CARRYING CAPACITY OF EITHER THE RUN OR TAP CONNECTOR.

▶ IT IS RECOMMENDED THAT EXTRA EFFORT BE USED TO REMOVE OXIDES FROM CONDUCTOR THAT HAS BEEN IN SERVICE BEFORE TEE-TAP INSTALLATION. ADDITIONAL USE OF PENETROX™ IS ALSO RECOMMENDED.

7. DIMENSIONS IN BRACKETS [] ARE IN MILLIMETERS ROUNDED OFF TO THE NEAREST MILLIMETER, UNLESS OTHERWISE SPECIFIED AND ARE FOR REFERENCE ONLY.

8. MATERIAL: ALUMINUM.

▶ DOUBLE CRIMP DIE SETS:

▶ U DIE WITH ADAPTER PT-6515.

▶ U DIE WITH ADAPTER PUADP-1.

11. FOR FASTER INSTALLATIONS USE BURNDY® PATRIOT® FAMILY OF BATTERY TOOLS.

REFERENCES: SE045717, SD033889N6, -N23, -N24
SUPERSEDES: SD031286-27(SHT-1)

TO ORDER BURNDY® PRODUCTS CALL		T - TAP	
UNITED STATES 1-800-346-4175 (LONDONDERRY, NH)		ITEM NO: N/A	
CANADA: 1-800-361-6975 (QUEBEC) 1-800-387-6487 (ALL OTHER PROVINCES)		CAT. NO: YTU (SEE TABLE)	
FOR PRODUCT INFO: http://www.burndy.com		DRAWN BY: ARAVIND SWAMY 11/6/2014	
		CHECKER: MANIKANDAN B 11/7/2014	
		DSN APRVL: W ZAHLMAN 7/10/2014	
		MFG APRVL: W BENEDICT	
		QA APRVL: C KOWALCZY 7/10/2014	
		MKT APRVL: J HALL 7/16/2014	
		PROD FAM: --	
		DRAWING NO	
		SD031286	
		REV	
		A	
		SHEET 1 OF 2	