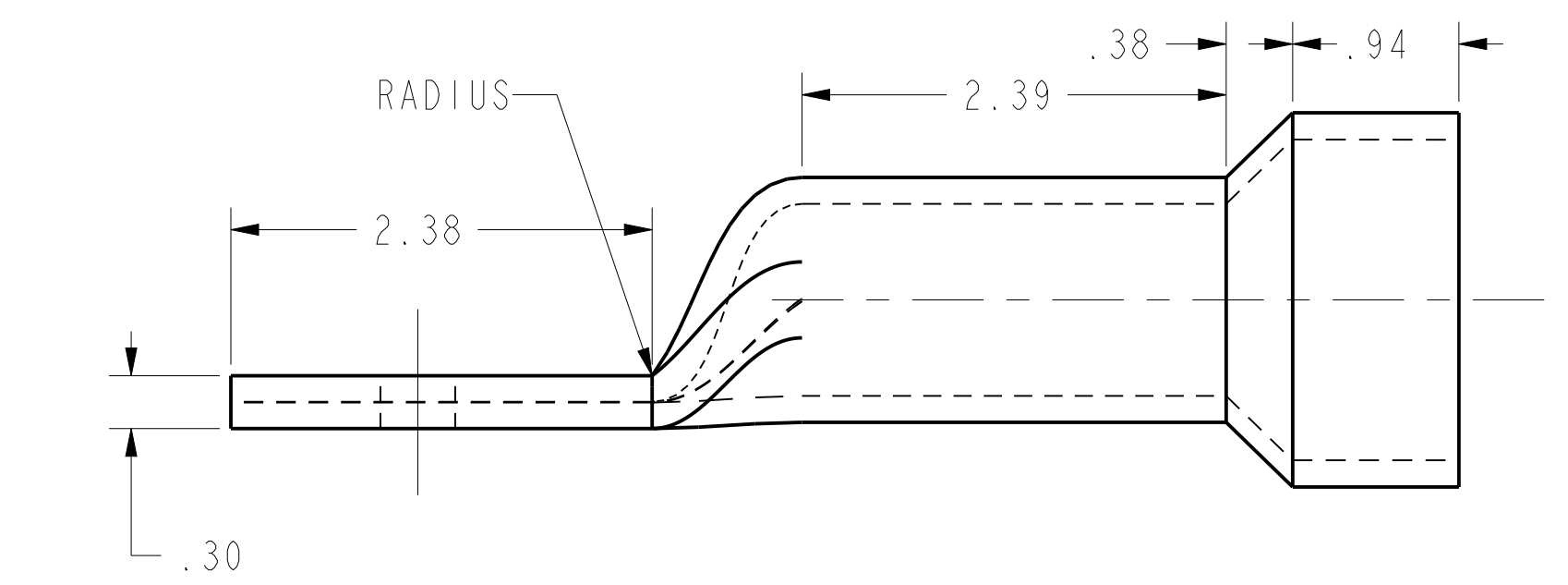
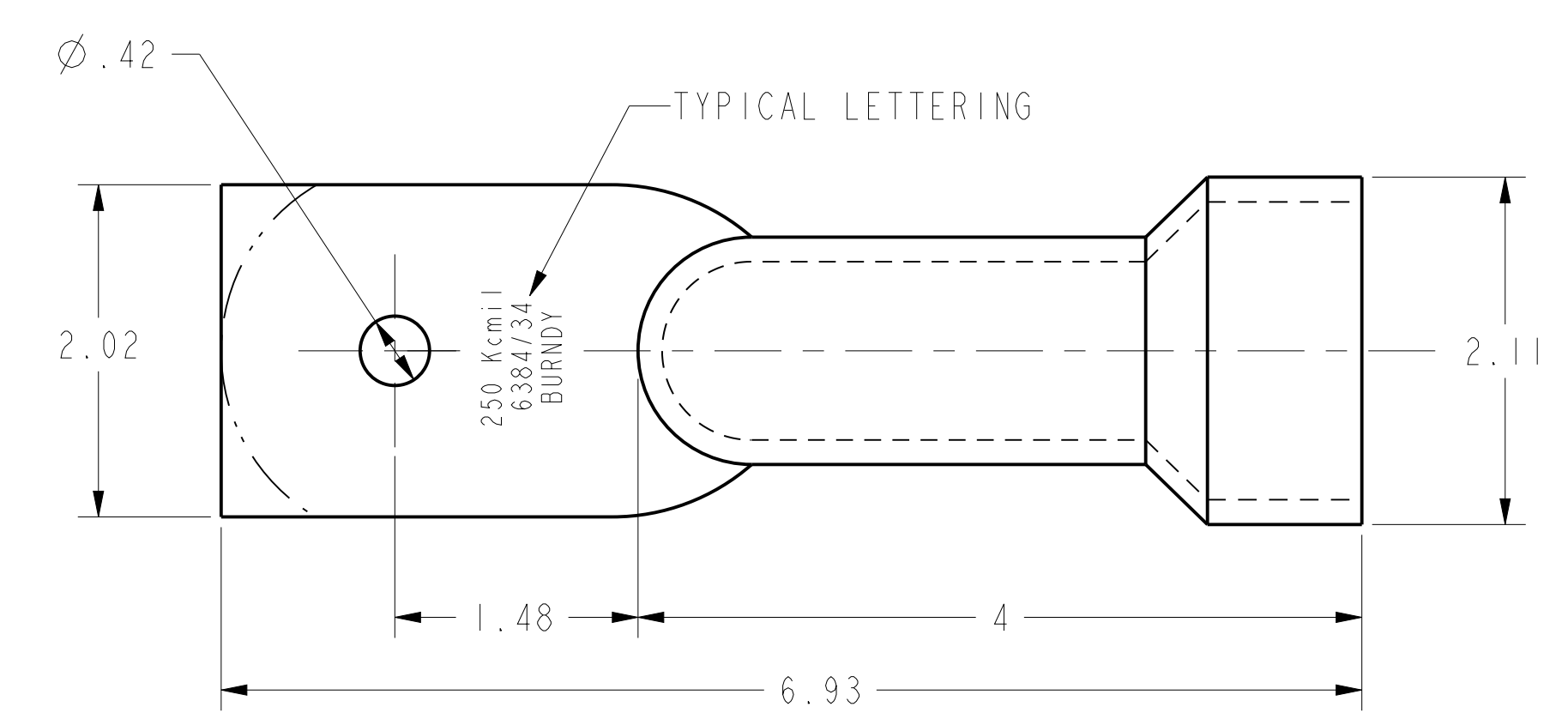


CATALOG #	CONDUCTOR ASTM "CLASS M"			B	BB	C	D	K	L	OD	S	T	X	Y	INSTALLATION DATA			
	COPPER FLEX CABLE	MAX DIA. OVER INSUL	MAX DIA. OVER CU	± .05	± .02	± .02	MIN	± .010	± .05	MAX	± .03	± .02	MIN	± .09	DIE SET CAT. NO.	Y35, Y39, Y750	U-DIE	NEST INDENTOR
YA1CLH75LD	2STR (1666/34)	.525 [13]	.337 [9]	.56 [14]	.50 [13]	.69 [18]	1.41 [36]	.406 [10]	2.94 [75]	.64 [16]	.12 [3]	.11 [3]	.91 [23]	1.44 [37]	G1CH34-1	Y35, Y39, Y750	U2CRT	UICD1 Y34PR
YA25LH83LD	1STR (2107/34)	.602 [15]	.376 [10]	.63 [16]	.50 [13]	.75 [19]	1.41 [36]	.406 [10]	3.00 [76]	.77 [20]	.12 [3]	.12 [3]	.91 [23]	1.50 [38]	G25H39-1	Y35, Y39, Y750	UICRT	U25D1 Y34PR2
YA26LH77LD	1/0 (2646/34)	.660 [17]	.423 [11]	.69 [18]	.62 [16]	.81 [21]	1.41 [36]	.406 [10]	3.25 [83]	.79 [21]	.12 [3]	.12 [3]	.91 [23]	1.75 [45]	G26H42-1	Y35, Y39, Y750	U25RT	U26D1 Y34PR2
YA26LH83LD								.525 [13]										
YA27LH77	2/0 (3325/34)	.724 [18]	.508 [13]	.75 [19]	.62 [16]	.91 [23]	1.41 [36]	.406 [10]	3.38 [86]	.86 [22]	.19 [5]	.12 [3]	.91 [23]	1.89 [46]	G27H46-1	Y35, Y39, Y750	U26RT	U27D1 Y34PR2
YA27LH77LD																		
YA27LH77TZ																		
YA27LH94																		
YA28LH82	3/0 (4256/34)	.795 [20]	.576 [15]	1.00 [25]	.62 [16]	1.02 [26]	1.41 [36]	.406 [10]	3.86 [98]	.95 [24]	.19 [5]	.14 [4]	.91 [23]	2.36 [60]	G28H51-1	Y35, Y39, Y750	U27RT	U28D1 Y34PR2
YA28LH82LD																		
YA28LH82TN																		
YA28LH89																		
YA29LH75LD	4/0 (5320/34)	.869 [22]	.645 [16]	1.00 [25]	.63 [16]	1.11 [28]	1.41 [36]	.406 [10]	3.87 [98]	1.04 [26]	.31 [8]	.16 [4]	.89 [23]	2.42 [61]	G29H56-1	Y35, Y39, Y750	U28RT	U29D1 Y34PR2
YA29LH75																		
YA29LH90																		
YA29LH90TZ																		
YA30LH74	250 Kcmil (6384/34)	.972 [25]	.721 [18]	1.00 [25]	.62 [16]	1.18 [30]	1.53 [39]	.406 [10]	3.91 [99]	1.16 [29]	.31 [8]	.16 [4]	.91 [23]	2.38 [60]	G30H62-1	Y35, Y39, Y750	U29RT	U30D1 Y34PR2



- NOTES:
- 1 MATERIAL: COPPER TUBE
 - 2 SUITABLE FOR USE IN Y34C OR Y34CN-HYPRESS AND Y29 DSI DIE SHOE AND ADAPTER FOR MOUNTING IN PUNCH PRESS.
 - 3 REFERENCES - SD025392-01
 - 4 TOLERANCE ±.03
 - 5 CATALOG NUMBERS ENDING WITH "LD" INDICATE LEAD PLATING., TN INDICATES TIN PLATING. TZ INDICATES TIN - ZINC PLATING.
 - 6 USE Y35P3 ADAPTER WITH NEST/INDENTOR DIE SET IN THIS TOOLING.

TO ORDER BURNDY® PRODUCTS CALL		HYSEALUG™	
UNITED STATES 1-800-346-4175 (LONDONDERRY, NH)		ITEM NO: SEE TABLE	CAT. NO: SEE TABLE
CANADA: 1-800-361-6975 (QUEBEC) 1-800-387-6487 (ALL OTHER PROVINCES)		DRAWN BY: M KATHIR 01/30/14	CHECKER: R ROMAN 07/08/14
FOR PRODUCT INFO: http://www.burndy.com		DSN APPVL: R ROMAN 07/08/14	MFG APPVL: --
		GA APPVL: C ACKERMAN 12/04/14	MKT APPVL: J SYLVIA 07/08/14
		PROD FAM: CM&R COMPRESSION	DRAWING NO: SD033245-01
		PROJECT #: NPDO2763	SCALE: 1:1
		DOCUMENT TYPE: Sales	REV: C
		REL LEVEL: Released	SHEET 1 OF 1

REV: PE0200