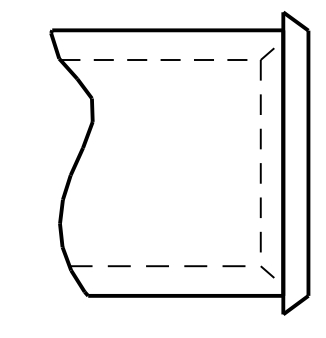
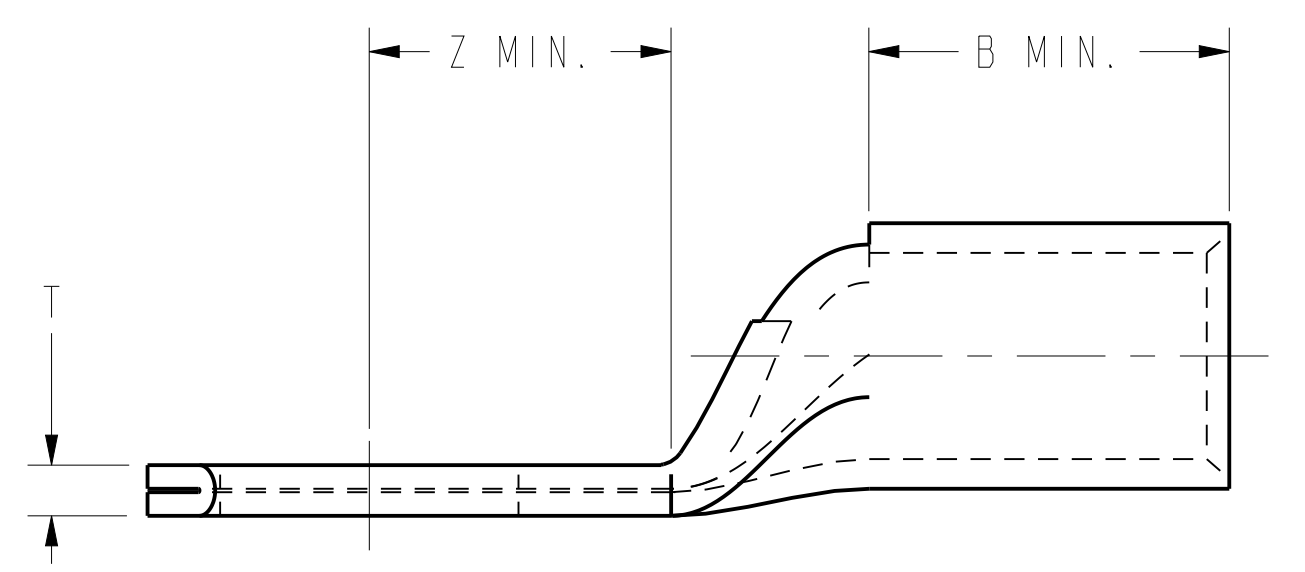
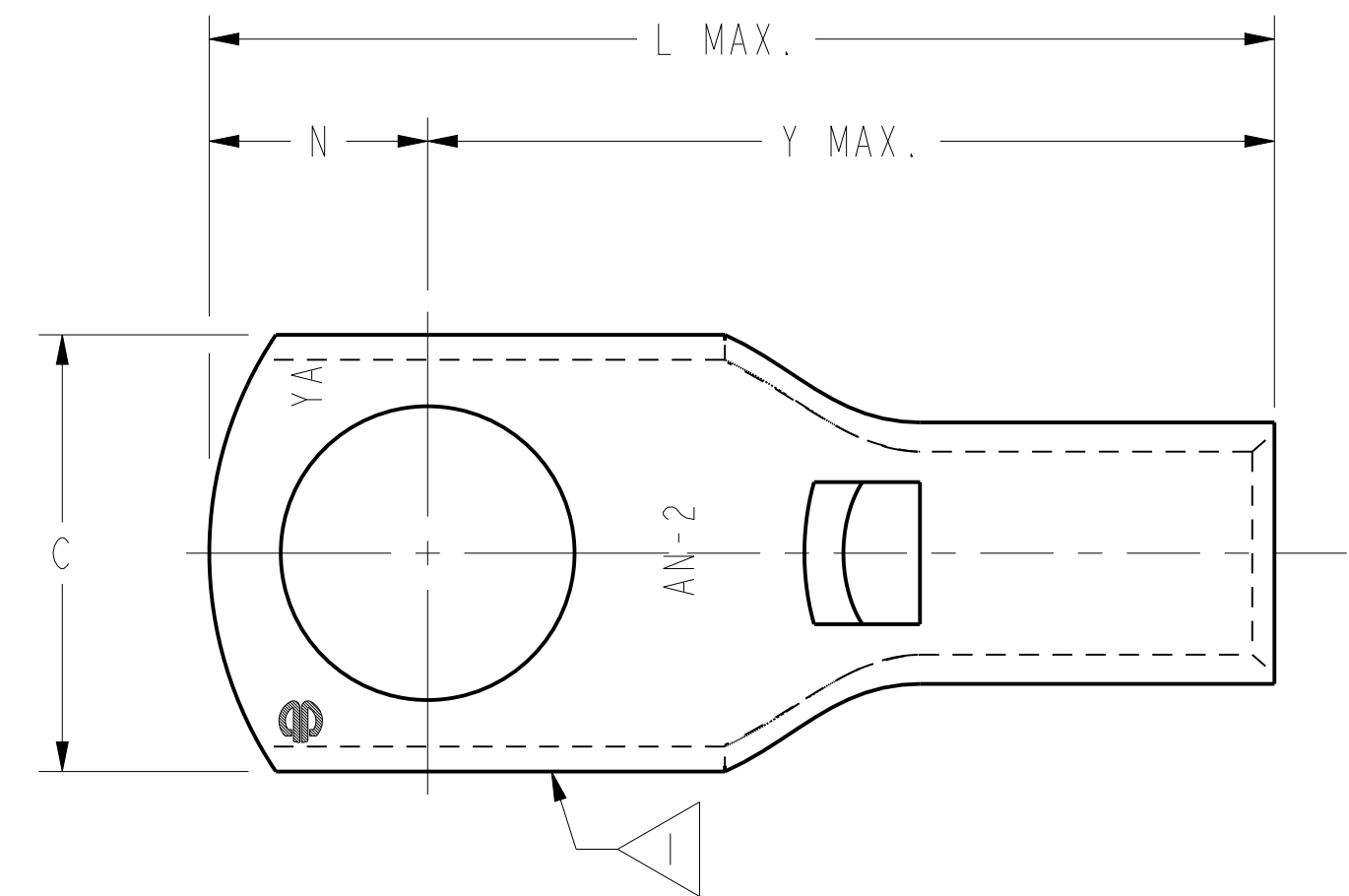


REV	DATE	DESCRIPTION	ECO	BY	CHK.
K	07/16/2015 00:00:00 AM	FOCUS REQUEST FPN1507024	40972	AS	MB

BURNDY® CATALOG NUMBER	COPPER AIRCRAFT CABLE MIL-W-5086	MS20659 DASH NUMBER	STUD SIZE	B MIN.	C ±.020	L MAX.	N ±.010	R REF.	T ±.020	Y MAX.	Z MIN.	INSTALL. TOOL INDEX NUMBER	
YAV2C-L3	AN-2	146	10	.595	.688	1.722	.344	.69	.091	1.373	.349	41	
YAV2C-L1		113	1/4			1.722	.344		.091	1.373	.349		
YAV2C-L2		147	5/16			1.722	.344		.091	1.373	.349		
YAV2C-L		114	3/8			1.722	.344		.091	1.373	.349		
YAV2C-L23		---	3/8			.688	1.868	.344		.091	1.519	.495	
YAV2C-L19		---	3/8			.665	1.943	.325		.094	1.613	.589	
YAV2C-L26		---	3/8-10MM			.688	1.722	.344		.091	1.373	.349	
YAV2C-L11		148	7/16			.770	1.878	.385		.079	1.488	.464	
YAV2C-L4		133	1/2			.770	1.878	.385		.079	1.488	.464	
YAV2C-L22		---	1/2			.770	2.082	.385	.69	.079	1.692	.668	
YAV2C-L38		---	3/4		.595	1.250	2.337	.625	.75	.051	1.707	.683	41
YAV2CL-L56		---	1/2		.725	.830	2.100	.406	.75	.120 MIN	1.685	.551	
YAVIC-L6		AN-1	---	10	.595	.760	1.666	.344	.75	.109	1.317	.246	42
YAVIC-L1	115		1/4			1.839	.380		.109	1.454	.383		
YAVIC-L2	149		5/16			1.839	.380		.109	1.454	.383		
YAVIC-L	116		3/8			1.839	.380		.109	1.454	.383		
YAVIC-L12	---		3/8-10MM			.760	1.759	.344		.109	1.410	.339	
YAVIC-L4	150		7/16			.860	1.970	.430		.102	1.535	.464	
YAVIC-L3	134		1/2			.840	1.970	.430		.100	1.535	.464	
YAVIC-L5	---		5/8		.595	1.060	2.431	.500	.75	.099	1.926	.855	42
YAVIC-L18	---	3/8			.760	1.989	.380		.109	1.604	.530		
YAV25-L5	AN-1/0	---	10	.658	.830	1.988	.375	.75	.110	1.608	.428	43	
YAV25-L29		---	10-5MM			1.988	.375		.110	1.608	.428		
YAV25-L1		117	1/4			2.028	.415		.110	1.608	.428		
YAV25-L2		151	5/16			2.028	.415		.110	1.608	.428		
YAV25-L		118	3/8			.830	2.028	.415		.110	1.608	.428	
YAV25-L15		---	3/8			.687	1.852	.343		.140	1.504	.324	
YAV25-L26		---	3/8			.880	2.089	.440		.104	1.644	.464	
YAV25-L30		---	3/8			.830	2.830	.390		.110	2.435	1.255	
YAV25-L28		---	3/8-10MM			.830	2.028	.390		.110	1.608	.428	
YAV25-L16		152	7/16			.880	2.089	.440		.105	1.644	.464	
YAV25-L3		135	1/2			.880	2.089	.440		.105	1.644	.464	
YAV25-L4		---	5/8			.880	2.305	.500		.105	1.800	.620	
YAV25-L23		---	3/4			.953	2.490	.625		.093	1.860	.680	
YAV25-L16G1		---	7/16			.830	2.089	.440		.110	1.644	.464	
YAV25-L3G2		---	1/2			.830	2.089	.440		.110	1.644	.464	
YAV25-L39	---	1/2		.658	.973±.040	2.089	.440	.75	.188 REF.	1.644	.464	43	



5 BELLED VIEW

- NOTES:
1. DUE TO METHODS OF MANUFACTURING, SERRATIONS APPEAR ON TONGUE.
 2. MATERIAL: COPPER TUBING
 3. STANDARD FINISH: TIN PLATED
ALTERNATE PLATING OPTIONS: ADD SUFFIX TO DENOTE DIFFERENT PLATING REQUIREMENTS.
NK = NICKEL PLATING
W = HOT TIN DIP.
SV = MATTE SILVER PLATING
BR = BARE (UNPLATED)
 4. ALL ITEMS ARE LISTED BY UNDERWRITERS LABS PER CONTROL NUMBER 670-B, FILE NUMBER E9498, WHITE CARD. (DOES NOT APPLY TO YAV--L-G).
 5. ADD SUFFIX "B" FOR BELLED BARREL. BELLED VERSIONS OF THESE HYLUGS™ DON'T CONFORM TO THE MS20659 DASH NO.

TO ORDER BURNDY® PRODUCTS CALL		HYLUG™	
UNITED STATES 1-800-346-4175 (LONDONDERRY, NH)		ITEM NO: N/A	CAT. NO: YAVL (SEE TABLE)
CANADA: 1-800-361-6975 (QUEBEC) 1-800-387-6487 (ALL OTHER PROVINCES)		DRAWN BY: ESK 02-02-73	CHECKER: TB 06-01-77
FOR PRODUCT INFO: http://www.burndy.com		DSN APPVL: TB 06-01-77	MFG APPVL: --
		QA APPVL: --	MKT APPVL: --
		PROD FAM: PROD./SMALL COMPRE.	DRAWING NO: SD034764
		PROJECT #: --	SCALE: 3:1
		DOCUMENT TYPE: Sales	REV: K
		REL LEVEL: Released	SHEET 2 OF 3

REV: PE0200