

REV	DATE	DESCRIPTION	ECO	BY	C.H.K.
D	2019-11-18 00:00:00 EST	ADDED NOTE 4(3)	53047	JL	TR

CATALOG NUMBER	STRANDED COPPER CONDUCTOR ACCOMMODATED			BOLT SIZE	METRIC BOLT SIZE	DIMENSIONS								
	CODE (AWG)	NAVY	METRIC SIZE (CLASS 2)			B	C	E	K DIA.	L	N	O.D.	T REF.	Z MIN.
YA402L	800 kcmil	-----	400mm <sup>2</sup> STR [26.1]	3/8	-----	1.42 [36]	1.98 [50]	1.13 [29]	.44 [11]	4.50 [114]	.50 [13]	1.35 [34]	.30 [8]	.52 [13]
YA40L2TC38				3/8	-----	1.42 [36]	1.98 [50]	1.00 [25]	.40 [10]	4.37 [111]	.50 [13]	1.35 [34]	.30 [8]	.52 [13]
YA402LN				1/2	M12	1.42 [36]	1.98 [50]	1.75 [44]	.56 [14]	5.38 [137]	.63 [16]	1.35 [34]	.30 [8]	.64 [16]
YA412L	800 kcmil	-----	-----	3/8	-----	1.88 [48]	2.01 [51]	1.13 [29]	.44 [11]	4.97 [126]	.50 [13]	1.38 [35]	.31 [6]	.52 [13]

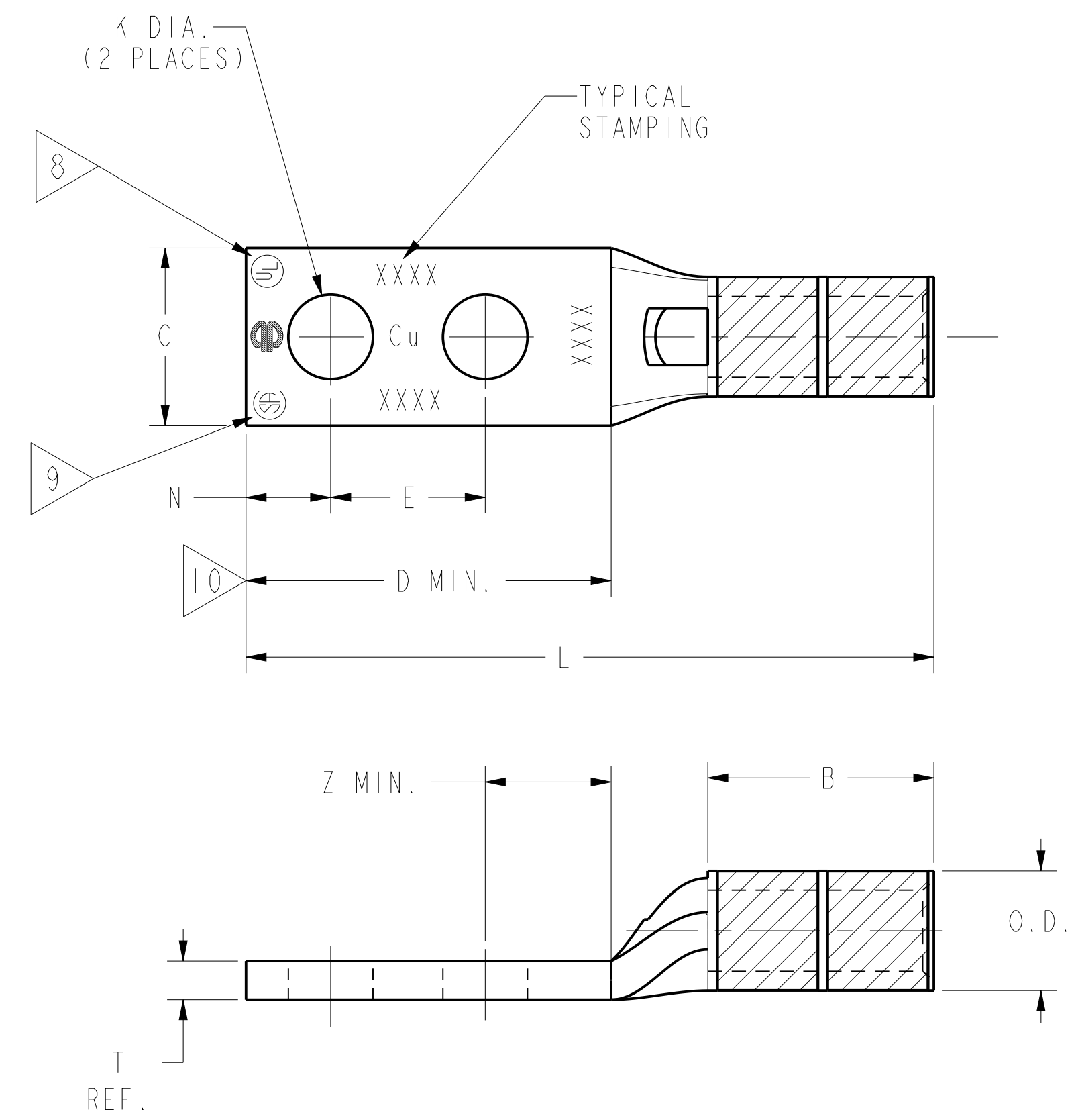
CONNECTOR SIZE	TOLERANCES						
	B	C	E	K DIA.	L	N	O.D.
-8C THRU -25	±.06	±.04	±.02	±.02	±.09	±.03	±.01
-26 THRU -34	±.08	±.04	±.02	±.02	±.12	±.03	±.01
-35 AND UP	±.09	±.06	±.02	±.02	±.15	±.06	±.01

TOLERANCE BLOCK

CATALOG NO.	COLOR CODE	INSTALLATION TOOLING (# CRIMPS)												DIELESS (# CRIMPS)	WIRE STRIP LENGTH
		DIE INFORMATION		MECHANICAL RATCHET				HYDRAULIC							
		DIE INDEX	TYPE	YIMRTC	OUR840	MD6 MD7	MD6--R2 MD7-34R	Y34A Y34B Y34BH	Y35, Y39 Y750, PAT750	Y46 PAT46	Y45	Y48B	Y60BHU		
YA402L YA40L2TC38 YA402LN	ORANGE	25	ORANGE DIE SET NEST INDENTOR	5	-----	-----	-----	-----	-----	P40RT(3) P40D(1) P44PR	S40RT(3)	C40R(1) C40D(1) Y48PR	L40RT(1)	HYDRAULIC: Y81KFT(3) Y4PC834(3) Y644(1)	1-15/16"
YA412L	GOLD	26	GOLD DIE SET NEST INDENTOR	5	-----	-----	-----	-----	-----	P41D(1) P44PR	-----	C41D(1) Y48PR	-----		1-15/16"

NOTES:

- MATERIAL: COPPER TUBING.
- FINISH: TIN PLATED.
- CATALOG # PT6515 ADAPTOR IS REQUIRED TO USE "U" DIES IN Y45 SERIES TOOLS.
- CATALOG # PUADP-1 ADAPTOR IS REQUIRED TO USE "U" DIES IN Y46 SERIES TOOLS.
- PERMANENT DIE IN TOOLING.
- DIMENSIONS IN BRACKETS [ ] ARE IN MILLIMETERS ROUNDED OFF TO THE NEAREST MILLIMETER, UNLESS OTHERWISE NOTED, AND ARE FOR REFERENCE ONLY.
- FOR USE BY CUSTOMERS THAT HAVE THIS HYPRESS™ NO NEW Y34A HYPRESS™ TOOLS ARE BEING PROCESSED. Y34A USES A--D TYPE NEST DIES.
- CONNECTORS ARE UL LISTED; UNDRILLED VERSIONS ARE NOT UL LISTED.
- CONNECTORS ARE CSA CERTIFIED; UNDRILLED VERSIONS ARE NOT CSA CERTIFIED.
- FOR UNDRILLED VERSIONS ADD SUFFIX "-U" TO END OF CATALOG NUMBER. FOR UNDRILLED VERSIONS, USE D MIN. = N MAX. + E MIN. + Z MIN.
- "X", "W-RT", "W-VT", "U", & "L" DIE SETS ARE COLOR CODED. "A", "B", AND "C" DIES ARE NOT COLOR CODED. NESTS AND INDENTOR TYPE ARE NOT COLOR CODED.
- FINISH: TIN PLATED. THE FOLLOWING SUFFIXES DENOTE OPTIONAL PLATING TYPES. BR = BARE; LD = LEAD; NK = NICKEL; SV = SILVER. ( EXAMPLE: YAV4CL2TC14NK )



TO ORDER BURNDY® PRODUCTS CALL		COPPER HYLUG™	
UNITED STATES 1-800-346-4175 (LONDONDERRY, NH)		ITEM NO: N/A	CAT. NO: YA--2L-, YA--2TC-
CANADA: 1-800-361-6975 (QUEBEC) 1-800-387-6487 (ALL OTHER PROVINCES)		DRAWN BY: J.MICHAUD 11/18/94	CHECKER: D.FILLION 11/18/94
FOR PRODUCT INFO: <a href="http://www.burndy.com">http://www.burndy.com</a>		DSN APPVL: C.PALAGI 10/24/94	MFG APPVL: N/A
		QA APPVL: C.ACKERMAN 11/17/02	MKT APPVL: N/A
		PROD FAM: CM&R COMPRESSION	DRAWING NO
		PROJECT #: --	SIZE
		DOCUMENT TYPE: Sales	SD035209
		REL LEVEL: Released	D
		SCALE: NTS	SHEET 14 OF 18

REV: PEO200