

CATALOG NUMBER	STRANDED COPPER CONDUCTOR ACCOMMODATED			BOLT SIZE	METRIC BOLT SIZE	DIMENSIONS								
	CODE (AWG)	NAVY	METRIC SIZE (CLASS 2)			B	C	E	K DIA.	L	N	O.D.	T REF.	Z MIN.
YA44L2TC38	1000 kcmil	-----	-----	3/8	-----	1.65 [42]	2.19 [56]	1.00 [25]	.40 [10]	4.74 [120]	.50 [13]	1.50 [38]	.33 [8]	.52 [13]
YA442L				1/2	M12		2.19 [56]	1.25 [32]	.56 [14]	5.24 [133]	.63 [16]			
YA44L2NTC12E24				1/2	M12		1.63 [41]	1.85 [47]	.52 [13]	5.65 [144]	.53 [13]			
YA44L2TC12				1/2	M12		2.19 [56]	1.25 [32]	.52 [13]	5.05 [128]	.53 [13]			
YA442LN				1/2	M12		2.19 [56]	1.75 [44]	.56 [14]	5.74 [146]	.63 [16]			
YA44L2TC58				5/8	-----		2.19 [56]	1.50 [38]	.69 [18]	5.55 [141]	.66 [17]			
YA452L	1250 kcmil	-----	630mm ² STR [33.2]	1/2	M12	2.00 [51]	2.46 [62]	1.38 [35]	.56 [14]	5.81 [148]	.63 [16]	1.69 [43]	.38 [10]	.64 [16]
YA452LN				1/2	M12	2.00 [51]	2.46 [62]	1.75 [44]	.56 [14]	6.19 [157]	.63 [16]	1.69 [43]	.38 [10]	.64 [16]

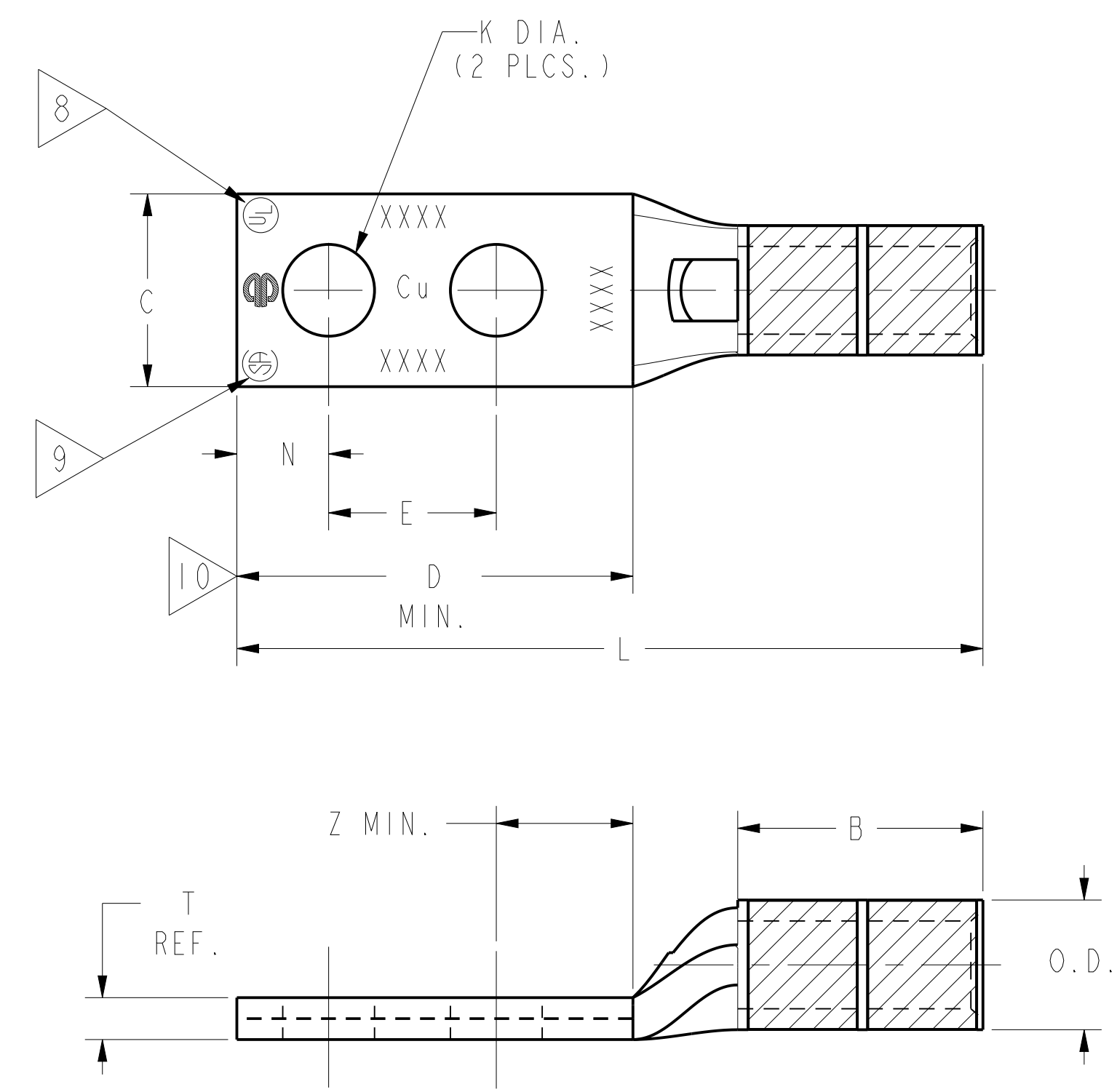
REV	DATE	DESCRIPTION	ECO	BY	CHK.
F	6/01/2011 12:00:00 AM	ADDED NOTE 1(3)	24644	BSB	TR

CONNECTOR SIZE	TOLERANCES						
	B	C	E	K DIA.	L	N	O.D.
-8C THRU -25	±.06	±.04	±.02	±.02	±.09	±.03	±.01
-26 THRU -34	±.08	±.04	±.02	±.02	±.12	±.03	±.01
-35 AND UP	±.09	±.06	±.02	±.02	±.15	±.06	±.01

TOLERANCE BLOCK

INSTALLATION TOOLING (# CRIMPS)																
CATALOG NO.	COLOR CODE	DIE INFORMATION			MECHANICAL				HYDRAULIC						DIELESS (# CRIMPS)	WIRE STRIP LENGTH
		DIE INDEX	TYPE	YIMRTC	OUR840	MD6 MD7	PAT500	MD7-34R	Y34A Y34B Y34BH	Y35, Y39 Y750, PAT750	Y46 PAT46	Y45	Y48B	Y60BHU		
YA44L2TC38 YA442L YA44L2NTC12E24 YA44L2TC12 YA442LN YA44L2TC58	WHITE	27	WHITE DIE SET NEST INDENTOR	-----	-----	-----	-----	-----	-----	-----	P44RT(3) P44D(1) P44PR	S44RT(3) -----	C44R(1) C44D(1) Y48PR	L44RT(1) -----	HYDRAULIC: Y644HS (1) Y81KFT (3) Y81KFTMBH (3) PAT81KFT-18V (3)	1-15/16"
YA452L YA452LN	YELLOW	29	YELLOW DIE SET NEST INDENTOR	-----	-----	-----	-----	-----	-----	-----	P45RT(3) P45D(1) P44PR	S45RT(3) -----	C45R(2) C45D(1) Y48PR	L45RT(2) -----	-----	2-1/16"

- NOTES:
- MATERIAL: COPPER TUBING.
 - FINISH: TIN PLATED.
 - CATALOG # PT6515 ADAPTOR IS REQUIRED TO USE "U" DIES IN Y45 SERIES TOOLS.
 - CATALOG # PUADP-1 ADAPTOR IS REQUIRED TO USE "U" DIES IN Y46 SERIES TOOLS.
 - PERMANENT DIE IN TOOLING.
 - DIMENSIONS IN BRACKETS [] ARE IN MILLIMETERS ROUNDED OFF TO THE NEAREST MILLIMETER, UNLESS OTHERWISE NOTED, AND ARE FOR REFERENCE ONLY.
 - FOR USE BY CUSTOMERS THAT HAVE THIS HYPRESS™ NO NEW Y34A HYPRESS™ TOOLS ARE BEING PROCESSED. Y34A USES A--D TYPE NEST DIES.
 - CONNECTORS ARE UL LISTED; UNDRILLED VERSIONS ARE NOT UL LISTED.
 - CONNECTORS ARE CSA CERTIFIED; UNDRILLED VERSIONS ARE NOT CSA CERTIFIED.
 - FOR UNDRILLED VERSIONS ADD SUFFIX "-U" TO END OF CATALOG NUMBER. FOR UNDRILLED VERSIONS, USE D MIN. = N MAX. + E MIN. + Z MIN.
 - "X", "W-RT", "W-VT", "U", & "L" DIE SETS ARE COLOR CODED. "A", "B", AND "C" DIES ARE NOT COLOR CODED. NESTS AND INDENTOR TYPE ARE NOT COLOR CODED.
 - FINISH: TIN PLATED. THE FOLLOWING SUFFIXES DENOTE OPTIONAL PLATING TYPES. BR = BARE; LD = LEAD; NK = NICKEL; SV = SILVER. (EXAMPLE: YAV4CL2TC14NK)



REFERENCE: SE209512
SUPERSEDES: SC91923

TO ORDER BURNDY® PRODUCTS CALL		COPPER HYLUG™	
UNITED STATES 1-800-346-4175 (LONDONDERRY, NH)		ITEM NO: N/A	CAT. NO: YA--2L-, YA--2TC- (TABLE)
CANADA: 1-800-361-6975 (QUEBEC) 1-800-387-6487 (ALL OTHER PROVINCES)		DRAWN BY: J.MICHAUD 11/18/94	CHECKER: D.FILLION 11/18/94
FOR PRODUCT INFO: http://www.burndy.com		DSN APPVL: C.PALAGI 10/24/94	MFG APPVL: -- --
		QA APPVL: C.ACKERMAN 11/10/94	MKT APPVL: T.NELSON 11/10/94
		PROD FAM: CM&R COMPRESSION	DRAWING NO: SD035209
		PROJECT #: --	SCALE: NTS
		DOCUMENT TYPE: Sales	REV: F
		REL LEVEL: Released	SHEET 15 OF 18

REV: PE0200