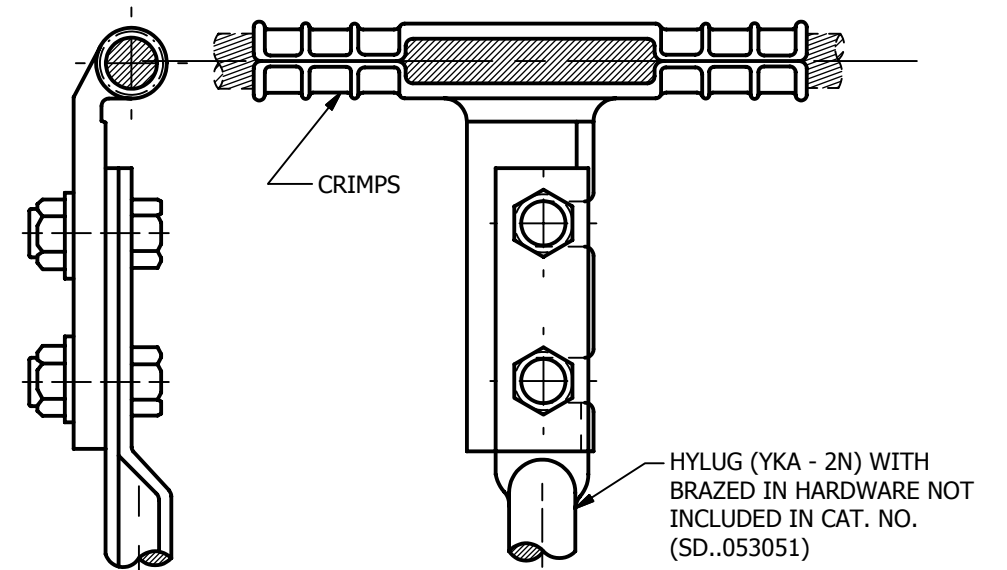
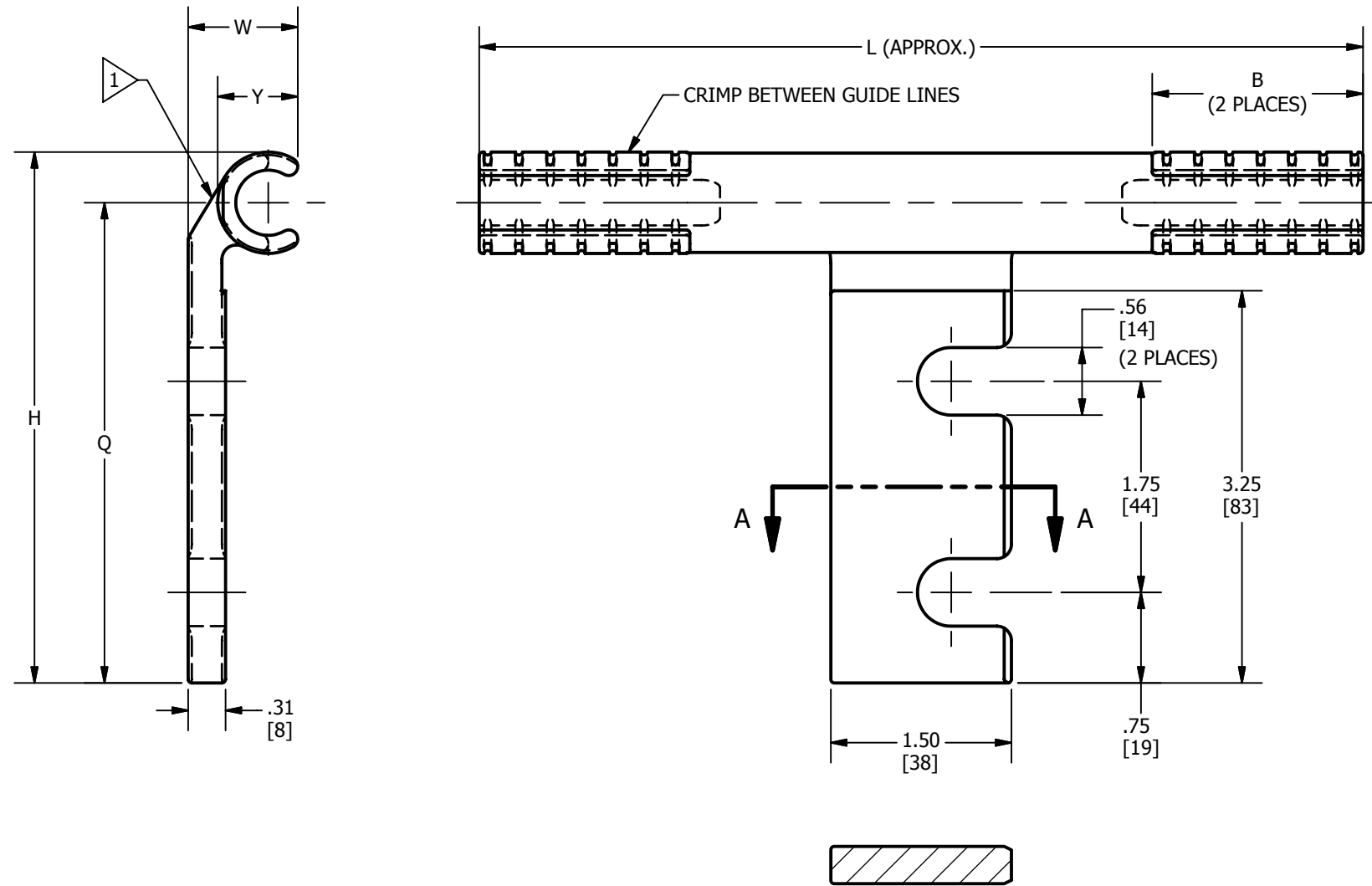
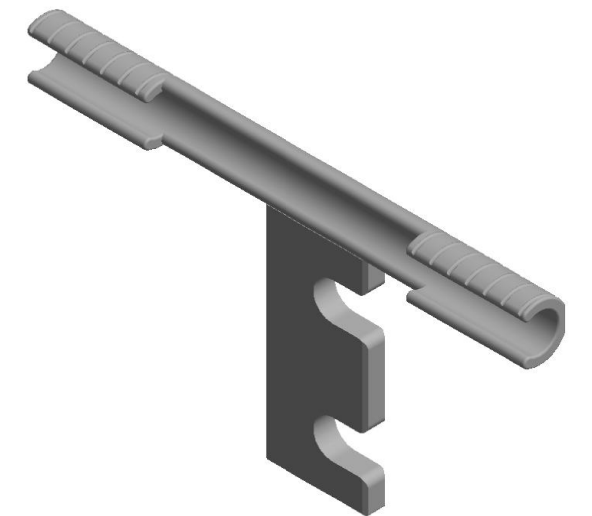


COPPER CONDUCTOR		CAT. NO.	B	H	Q	L	W	Y	DIE INDEX	TOOL INSTALLATION DATA	
AWG	STR									MD7, MD6	Y35, Y750, Y45, Y46
#6	7	YTA6C2N	1.06	4.19	3.88	5.59	.84	.56	163	W163 (3)	U163 (1)
#4	7	YTA4C2N	1.06	4.19	3.88	5.59	.84	.56	163	W163 (3)	U163 (1)
#2	7	YTA2C2N	1.06	4.19	3.88	5.59	.84	.56	163	W163 (3)	U163 (1)
1/0	7.19	YTA252N	1.75	4.40	3.98	7.34	.91	.67	166	W166 (6)	U166 (3)
2/0	7.19	YTA262N	1.75	4.40	3.98	7.34	.91	.81	166	W166 (6)	U166 (3)
2/0	7.19	YTA262NW	1.75	4.40	3.98	7.34	.91	.81	166	W166 (6)	U166 (3)
3/0	7.19	YTA272N	1.78	4.55	4.02	7.50	.88	.73	167	W167 (6)	U167/U568 (3)
4/0	7.19	YTA282N	1.84	4.62	4.09	7.68	.94	.84	168	--	U168 (4)

REV	DATE	DESCRIPTION	ECO	BY	C'H.K.
B	01/05/2016	DRAWING RELEASED	45647	CV	MB



VIEW AFTER INSTALLATION



3D VIEW

NOTES:

- 1 LETTERING ON THIS SURFACE: BURNDY
YTA26-2N
2/0 STR DIE 166
- 2. DIMENSIONS IN BRACKETS [] ARE IN MILLIMETERS ROUNDED OFF TO THE NEAREST MILLIMETER, UNLESS OTHERWISE SPECIFIED AND ARE FOR REFERENCE ONLY.
- 3. MATERIAL: CAST COPPER ALLOY.
- 4 ADD SUFFIX "W" FOR HOT TIN DIP.
- 5 ADD SUFFIX "TN" FOR TIN PLATED.

SECTION A-A
VIEW BEFORE INSTALLATION

TO ORDER BURNDY® PRODUCTS CALL		T-TAP LUG (NEMA) COPPER	
UNITED STATES 1-800-346-4175 (LONDONDERRY, NH)		ITEM NO: N/A	DRAWING NO
CANADA: 1-800-361-6975 (QUEBEC) 1-800-387-6487 (ALL OTHER PROVINCES)		CAT. NO: YTA-2N (SEE TABLE) 4	REV
FOR PRODUCT INFO: http://www.burndy.com		DRAWN BY: C. RAJEEV GANDHI 9/10/2013	SD052694-01
		CHECKER: J. SMITH 6/27/2014	B
		DSN APRVL: J. SMITH 6/27/2014	
		MFG APRVL: T. WAWRZYNIAK 7/2/2014	
		QA APRVL: J. HILMAN 6/27/2014	
		MKT APRVL: J. HALL 6/30/2014	
		PROD FAM: --	
		PROJECT #: --	
		DOCUMENT TYPE: SALES	
		REL LEVEL: Released	
		SIZE	
		B	
		SHEET 1 OF 1	