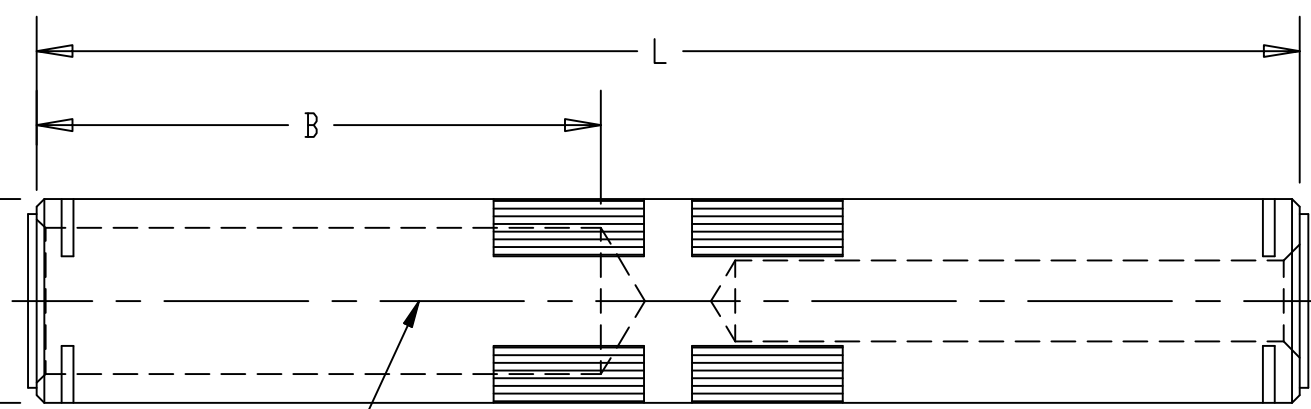


CATALOG NUMBER	DIMENSIONS			INSTALLATION TOOLING							KEARNEY WH-2 PRESS	WIRE STRIP LENGTH	
	B	L	O.D.	COLOR CODE	DIE INFORMATION		HYDRAULIC						
					DIE INDEX	TYPE	Y35,Y39,Y750 BAT35,BAT750	Y46	Y45	Y48B			Y60BHU
YCR25RG6 THRU YCR28RG8	2.88 [73]	6.38 [162]	1.06 [27]	PURPLE	654	DIE SET	U654	U654,P654	U654	-----	L654	1 OR 1 1/8-1	3"
			-----	705			U705	U705	U705	-----	-----		
YCR291RG1 THRU YCR37RG14	3.00 [76]	(FIG.1) 6.69[170] (FIG.2) 7.38[187]	1.25 [32]	-----	317	DIE SET	U317	U317	U317	C317	L317	1 1/8-1	3 1/16"
			-----	705			U705	U705	U705	-----	-----		

REV.	DATE	DESCRIPTION	ECO	BY	C'K'D.
B	12/06/13	DRAWING RELEASED	34240	GP	MB

CATALOG NUMBER	BARREL 'A'						BARREL 'B'					
	3 CONDUCTORS						3 CONDUCTORS					
	COPPER		ALUMINUM		ACSR		COPPER		ALUMINUM		ACSR	
	AWG, Kcmil	STR.	AWG, Kcmil	STR.	AWG, Kcmil	STR.	AWG, Kcmil	STR.	AWG, Kcmil	STR.	AWG, Kcmil	STR.
YCR25RG6	1/0	7,19	1/0	7,19	1/0	6-1	1/0	7,19	1/0	7,19	1/0	6-1
YCR26RG2	2/0	7,19	2/0	7,19	2/0	6-1	1/0	7,19	1/0	7,19	1/0	6-1
YCR26RG3							2/0	7,19	2/0	7,19	2/0	6-1
YCR27RG5	3/0	7,19	3/0	7,19	3/0	6-1	1/0	7,19	1/0	7,19	1/0	6-1
YCR27RG6							2/0	7,19	2/0	7,19	2/0	6-1
YCR27RG7							3/0	7,19	3/0	7,19	3/0	6-1
YCR28RG5	4/0	7,19	4/0	7,19	4/0	6-1	1/0	7,19	1/0	7,19	1/0	6-1
YCR28RG6							2/0	7,19	2/0	7,19	2/0	6-1
YCR28RG7							3/0	7,19	3/0	7,19	3/0	6-1
YCR28RG8							4/0	7,19	4/0	7,19	4/0	6-1
YCR291RG1	250	19	250	19	266.8	19-1	1/0	7,19	1/0	7,19	1/0	6-1
YCR291RG2							2/0	7,19	2/0	7,19	2/0	6-1
YCR291RG3							3/0	7,19	3/0	7,19	3/0	6-1
YCR291RG4							4/0	7,19	4/0	7,19	4/0	6-1
YCR291RG5		37	266.8	7,19			250	19,37	250	19,37	266.8	18-1
YCR30RG4	300	19	300	19,37	266.8	26-7	1/0	7,19	1/0	7,19	1/0	6-1
YCR30RG5							2/0	7,19	2/0	7,19	2/0	6-1
YCR30RG6							3/0	7,19	3/0	7,19	3/0	6-1
YCR30RG7							4/0	7,19	4/0	7,19	4/0	6-1
YCR30RG8							250	19,37	250	19,37	266.8	18-1
YCR30RG9	300	19,37	336.4	19			300	19,37	300	19,37	266.8	26-7



TYPICAL LETTERING

BURNDY YCR28G6
4/0 CU-AL 7 19
4/0 ACSR 64

USE DIE INDEX 654 705 KI KI 1/8-7
OVERLAP CRIMPS EACH END
2/0 CU-AL 7 19 2/0 ACSR 6-1

NOTES:

- MATERIAL: ALUMINUM.
- BARRELS PARTIALLY FILLED WITH PENETROX™ AND SEALED.
- CONNECTORS ARE DESIGNED FOR JOINING
 - A.) CU. TO ALUM. OR ACSR
 - B.) ALUM. OR ACSR TO ALUM. OR ACSR
- CATALOG # PT6515 ADAPTOR IS REQUIRED TO USE "U" DIES IN Y45 SERIES TOOLS.
- CATALOG # PUADP-1 ADAPTOR IS REQUIRED TO USE "U" DIES IN Y46 SERIES TOOLS.
- DIMENSIONS IN [] BRACKETS ARE IN MILLIMETERS, ROUNDED OFF TO THE NEAREST MILLIMETER, UNLESS OTHERWISE NOTED. METRIC DIMENSIONS ARE FOR REFERENCE ONLY.
- CRIMPS OVERLAP ON BOTH ENDS.
- ACCEPTABLE FOR USE ON COMPACT AAC.

TO ORDER BURNDY® PRODUCTS CALL
UNITED STATES:
1-800-346-4175 (LONDONDERRY, NH)
CANADA:
1-800-361-6975 (QUEBEC)
1-800-387-6487 (ALL OTHER PROVINCES)
FOR PRODUCT INFO: <http://www.burndy.com>

REDUCER	
ITEM NO: --	
CAT NO: YCR-R-G- (SEE TABLE)	
SCALE: 1:1	
DRAWN BY: MAP	11/19/64
CHECKER: MJM	02/23/65
DSN APPVL: RGH	02/27/65
MFG APPVL: A. BECK	07/21/95
QC APPVL: D. VARIO	07/25/95
MKT APPVL: --	--
PROD FAM: --	
PROJECT #: --	SIZE
DOCUMENT TYPE: SALES	C
REL LEVEL: RELEASED	

BURNDY

DRAWING NO	REV
SD057607	B
SHEET 1 OF 2	

REV.	DATE	DESCRIPTION	ECO	BY	C'K'D.
B	12/06/13	DRAWING RELEASED	34240	GP	MB

CATALOG NUMBER	BARREL 'A'						BARREL 'B'					
	3 CONDUCTORS						3 CONDUCTORS					
	COPPER		ALUMINUM		ACSR		COPPER		ALUMINUM		ACSR	
AWG, Kcmil	STR.	AWG, Kcmil	STR.	AWG, Kcmil	STR.	AWG, Kcmil	STR.	AWG, Kcmil	STR.	AWG, Kcmil	STR.	
YCR32RG1						1/0	7,19	1/0	7,19	1/0	6-1	
YCR32RG2						2/0	7,19	2/0	7,19	2/0	6-1	
YCR32RG3						3/0	7,19	3/0 4/0 CPT	7,19 19	3/0	6-1	
YCR32RG4						4/0	7,19	4/0	7,19	4/0	6-1	
YCR32RG5	350	19 37	350 397.5 477 CPT	19,37 19 19	336.4	18-1	250	19,37	250 266.8 336 CPT	19,37 7,19 19	266.8	18-1
YCR32RG6						300	19,37	300 336.4	19,37 19	266.8	26-7	
YCR32RG7						350	19,37	350 397.5	19,37 19	336.4	18-1 26-7	
YCR32RG8						# 4	7,19	# 4	7,19	# 4	7,1	
YCR32RG9						# 2	7,19	# 2	7,19	# 2	6,1	
YCR32RG10						# 4 SOL	----	# 4 SOL	----	-----	----	
YCR341RG1						1/0	7,19	1/0	7,19	1/0	6-1	
YCR341RG2						2/0	7,19	2/0	7,19	2/0	6-1	
YCR341RG3	400	19 37	400	19,37	336.4 387.5	30-7 18-1	3/0	7,19	3/0	7,19	3/0	6-1
YCR341RG4						4/0	7,19	4/0	7,19	4/0	6-1	
YCR341RG5						250	19,37	250 266.8	19,37 7,19	266.8	18-1	
YCR341RG6						300	19,37	300 336.4	19,37 19	266.8	26-7	
YCR341RG7	400	19,37	400	19,37	336.4 397.5	30-7 18-1	350	19,37	350 397.5	19,37 19	336.4	18-1 26-7
YCR341RG8						400	19,37	400	19,37	336.4 397.5	30-7 18-1	
YCR361RG2						1/0	7,19	1/0	7,19	1/0	6-1	
YCR361RG3						2/0	7,19	2/0	7,19	2/0	6-1	
YCR361RG4						3/0	7,19	3/0	7,19	3/0	6-1	
YCR361RG5	500	37,61	477 500	19,37 37,61	397.5 477	26-7 30-7 18-1	4/0	7,19	4/0	7,19	4/0	6-1
YCR361RG6						250	19,37	250 266.8	19,37 7,19	266.8	18-1	
YCR361RG7						300	19,37	300 336.4	19,37 19	266.8	26-7	
YCR361RG8						350	19,37	350 397.5	19,37 19	336.4	18-1 26-7	
YCR361RG9						400	19,37	400	19,37	336.4 397.5	30-7 18-1	
YCR361RG10						----	----	477 500	19,37 37,61	397.5 477	26-7 30-7	
YCR37RG5						1/0	7,19	1/0	7,19	1/0	6-1	
YCR37RG6						2/0	7,19	2/0	7,19	2/0	6-1	
YCR37RG7						3/0	7,19	3/0	7,19	3/0	6-1	
YCR37RG8						4/0	7,19	4/0	7,19	4/0	6-1	
YCR37RG9						250	19,37	250 266.8	19,37 7,19	266.8	18-1	
YCR37RG10	600	37,61	556.5 600	19,37 37,61	477 556.5	24-7 26-7 30-7 18-1	300	19,37	300 336.4	19,37 19	266.8	26-7
YCR37RG11						350	19,37	350 397.5	19,37 19	336.4	18-1 26-7	
YCR37RG12						400	19,37	400	19,37 19	366.4 397.5	30-7 18-1	
YCR37RG13						500	37,61	477 500	19,37 37,61	397.5 477	26-7 30-7 18-1	
YCR37RG14						----	----	556.5 600	19,37 37,61	477 556.5	24-7 26-7 30-7 18-1	

NOTES:
SEE SHEET 1 FOR NOTES AND VIEWS.

TO ORDER BURNDY® PRODUCTS CALL
UNITED STATES:
1-800-346-4175 (LONDONDERRY, NH)
CANADA:
1-800-361-6975 (QUEBEC)
1-800-387-6487 (ALL OTHER PROVINCES)
FOR PRODUCT INFO: <http://www.burndy.com>

REDUCER	
ITEM NO: --	
CAT NO: YCR-R-G- (SEE TABLE)	
SCALE: 1:1	
DRAWN BY: R. PERREAU 09/18/95	
CHECKER: J. MICHAUD 09/25/95	
DSN APPVL: C. PALAGI 06/16/95	
MFG APPVL: A. BECK 07/21/95	
QC APPVL: D. VARIO 07/25/95	
MKT APPVL: L. HERRON 07/10/95	
PROD FAM: --	DRAWING NO
PROJECT #: --	SD057607
DOCUMENT TYPE: SALES	REV
REL LEVEL: RELEASED	B
C	SHEET 2 OF 2