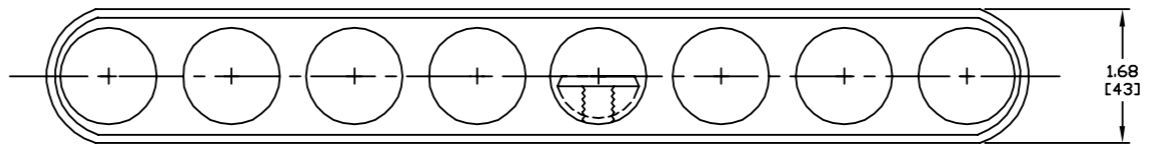
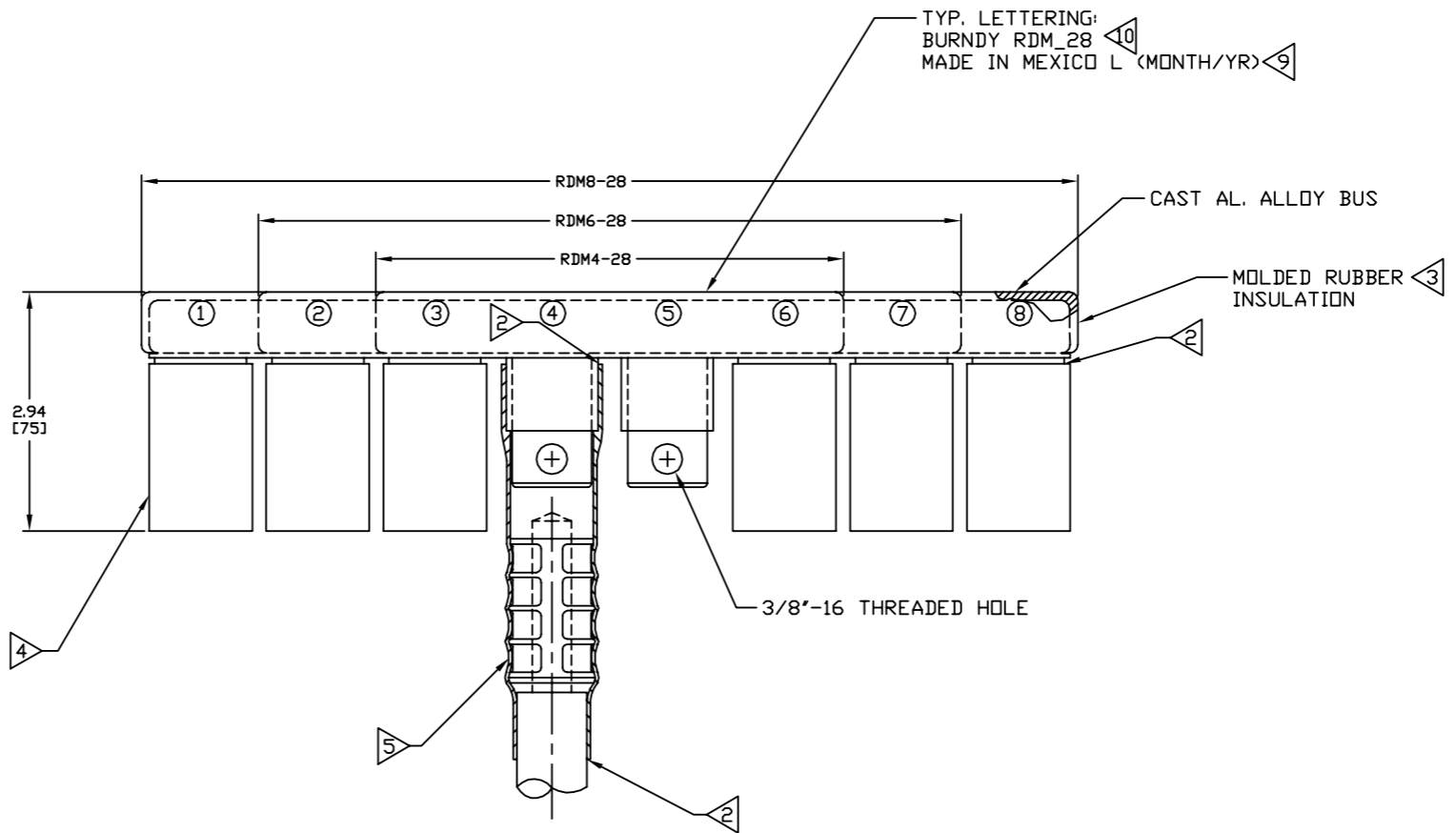


DRAWING NO.
SD060327-01

7 6 5 4 3 2 1

CATALOG NO.	ITEM NO.	L	NO. OF OUTLETS
RDM4-28	216540	5.81 [148]	4
RDM6-28	216560	8.78 [223]	6
RDM8-28	216222	11.75 [298]	8

REV.	DATE	DESCRIPTION	ECD	BY	C/K'D
B	8/2/2013	LOGO CHANGE	32736	MVP	MB



NOTES:

- SCRATCH BRUSHING OF ALUMINUM CONDUCTORS BEFORE MAKING INSTALLATIONS IS REQUIRED.
- SUBMERSIBLE JOINT.
- INSULATION - 600 VOLT RATING.
- REMOVABLE SEALING COVERS. FACTORY ASSEMBLED TO ALL LUGS EXCEPT ONE CENTER LUG.
- TYP. FIELD INSTALLATION OF CONNECTOR. FOR CONNECTOR ASS'Y SEE DRAWING SD60217 (SEE DRAWING SD63044 FOR RUBBER SLEEVE INSTALLATION).
- ACCOMMODATES: #4 STR. (.232 DIA.) CU OR AL TO 250 kcmil (.575 DIA.) CU OR AL 300 kcmil (.630 DIA.) AL TO 350 kcmil (.681 DIA.) AL
- CABLE INSULATIONS: SMOOTH ROUND DIA. OF RHW -USE, POLY, XLINK, POLY OR PVC MATERIAL.
- DIMENSIONS IN BRACKETS [] ARE IN MILLIMETERS ROUNDED OFF TO THE NEAREST MILLIMETER UNLESS OTHERWISE SPECIFIED, AND ARE FOR REFERENCE ONLY.
- COUNTRY OF ORIGIN, AND MO/YR. MANUFACTURED WILL APPEAR ON PART.
- SEE TABLE FOR NUMBER OF OUTLETS.

TO ORDER BURNDY® PRODUCTS CALL UNITED STATES: 1-800-346-4175 (LONDONDERRY, NH) CANADA: 1-800-361-6975 (QUEBEC) 1-800-387-6487 (ALL OTHER PROVINCES) FOR PRODUCT INFO: http://www.burndy.com		URD MOLE (MEXICO)	
		ITEM NO: (TABLE)	
CAT NO: RDM--28 (TABLE)			
SCALE: 1/1			
DRAWN BY: R BOISVERT 03/28/07		DRAWING NO	
CHECKER: P LAPONUS 03/28/07		REV	
DSN APPVL: J MICHAUD 03/23/07		SD060327-01	
MFG APPVL: R CHARPENTIER 03/23/07		PROJECT #	
QC APPVL: J BRODEUR 03/26/07		SIZE	
MKT APPVL: S MOIST 03/23/07		D	
PROD FAM: --		SHEET 1 OF 1	
PROJECT #: --		REL LEVEL: Released	