

REV.	DATE	DESCRIPTION	ECO	BY	C'K'D.
0	3/20/97	ADDED SHEET	3032	PL	JLM

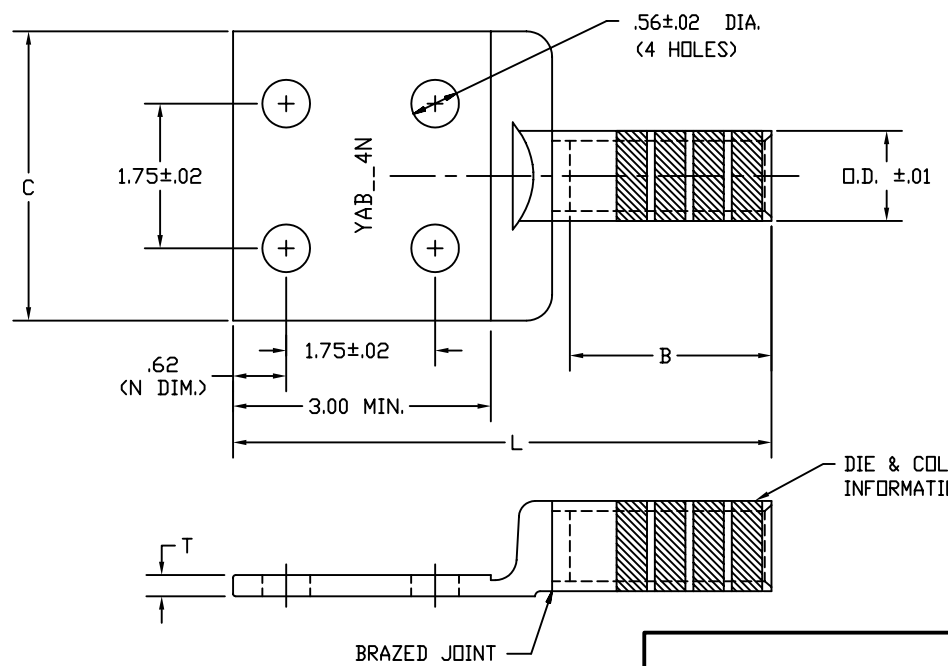
CATALOG NUMBER	COPPER CONDUCTOR AWG kcmil			DIMENSIONS				
	SIZE	STR	METRIC CABLE	B	C	L	O.D.	T
YAB32-4N	400 kcmil (.728)	19-37	-----	2.12 [54]	3.00 [76]	6.20 [157]	.95 [24]	.25 [6]
YAB34-4N	500 kcmil (.814)	19-37	-----	2.25 [57]	3.00 [76]	6.33 [161]	1.06 [27]	.25 [6]
YAB36-4N	600 kcmil (.893)	37-61	-----	2.69 [68]	3.00 [76]	6.79 [172]	1.19 [30]	.25 [6]
YAB37-4N	650 kcmil (.929)	61	-----	2.81 [71]	3.00 [76]	7.09 [180]	1.23 [31]	.31 [8]

CONNECTOR SIZE	TOLERANCES				
	B	C	L	N	T
32 - 34	±.08	+04 -.02	±.12	±.03	±.04
36 AND 37	±.09	±.06	±.15	±.06	±.04

TOLERANCE BLOCK

INSTALLATION TOOLING (# CRIMPS)

CATALOG NO.	COLOR CODE	DIE INFORMATION		MECHANICAL RATCHET		HYDRAULIC						DIELESS (# CRIMPS)	WIRE STRIP LENGTH
		DIE INDEX	TYPE	MD6--R2 BAT500	MD7-34R	Y34A Y34B Y34BH	Y35, Y39 Y750, BAT35 BAT750	Y46	Y45	Y48B	Y60BHU		
YAB32-4N	BLUE	19 470	BLUE DIE SET	W32RT(4) W32VT(4)	W32VT(4)	-----	U32RT(4) U30ART(4)	U32RT(4) U30ART(4)	U32RT(4) U30ART(4)	C32R(1) C30AR(1)	L32RT(1) L30ART(1)	HYDRAULIC: Y644M(1) BAT644M(1)	2-3/16"
			NEST	-----	-----	B32D(2) A32D(2)	U32D-1(2)	U32D-1(2)	U32D-1(2)	C32D(2)	-----		
			INDENTOR	-----	-----	Y34PR	Y34PR	Y34PR	Y34PR	Y48PR	-----		
YAB34-4N	BROWN	20 299	BROWN DIE SET	W34RT(4) W34VT(4)	W34VT(4)	-----	U34RT(4) U31ART(4)	U34RT(4) P34RT(4) U31ART(4)	U34RT(4) U31ART(4)	C34R(2) C31AR(2)	L34RT(2)	HYDRAULIC: Y644M(1) BAT644M(1)	2-5/16"
			NEST	-----	-----	B34D(2) A34D(2)	U34D-1(2)	U34D-1(2)	U34D-1(2)	C34D(2)	-----		
			INDENTOR	-----	-----	Y34PR	Y34PR	Y34PR	Y48PR	-----			
YAB36-4N	GREEN	22 472	GREEN DIE SET	-----	-----	-----	U36RT(4) U32ART(4)	U36RT(4) U32ART(4)	U36RT(4) U32ART(4)	C36R(2) C32AR(2)	L36RT(2) L32ART(2)	HYDRAULIC: Y644M(1) BAT644M(1)	2-3/4"
			NEST	-----	-----	-----	-----	P36D(2)	-----	C36D(2)	-----		
			INDENTOR	-----	-----	-----	-----	P44PR	-----	Y48PR	-----		
YAB37-4N	ORANGE	23	ORANGE DIE SET	-----	-----	-----	U37RT(4)	U37RT(4)	U37RT(4)	C37R(2)	L37RT(2)	HYDRAULIC: Y644M(1) BAT644M(1)	2-7/8"
			NEST	-----	-----	-----	-----	P37D(2)	-----	C37D(2)	-----		
			INDENTOR	-----	-----	-----	-----	P44PR	-----	Y48PR	-----		



NOTES:

- MATERIAL: COPPER TUBE AND CAST COPPER TONGUE.
- FINISH: TIN PLATED.
- CATALOG # PT6515 ADAPTOR IS REQUIRED TO USE 'U' DIES IN Y45 SERIES TOOLS.
- CATALOG # PUADP-1 ADAPTOR IS REQUIRED TO USE 'U' DIES IN Y46 SERIES TOOLS.
- Y35P3 INDENTOR ADAPTOR REQUIRED FOR Y34PR INDENTOR.
- DIMENSIONS IN BRACKETS [] ARE IN MILLIMETERS ROUNDED OFF TO THE NEAREST MILLIMETER, UNLESS OTHERWISE NOTED, AND ARE FOR REFERENCE ONLY.
- FOR USE BY CUSTOMERS THAT HAVE THIS HYPRESS™ NO NEW Y34A HYPRESS™ TOOLS ARE BEING PROCESSED. Y34A USES A--D NEST DIES ONLY.
- 'W-RT', 'W-VT', 'U', & 'L' DIE SETS ARE COLOR CODED. 'A', 'B', AND 'C' DIES ARE NOT COLOR CODED. NESTS AND INDENTOR TYPE ARE NOT COLOR CODED.
- CONSIDER YA-2N AND YA-4N PRODUCT LINE AS AN ALTERNATE CHOICE. SEE SD31189.
- FOR CATALOG NUMBERS THAT ARE OIL TIGHT SEALED ADD SUFFIX 'DT' OR 'DTS' TO CATALOG NUMBER.

TO ORDER BURNDY® PRODUCTS CALL
 UNITED STATES:
 1-800-346-4175 (LONDONDERRY, NH)
 CANADA:
 1-800-361-6975 (QUEBEC)
 1-800-387-6487 (ALL OTHER PROVINCES)
 FOR PRODUCT INFO: <http://www.burndy.com>

HYLUG™ CU, NEMA	
ITEM NO: N/A	
CAT NO: YAB--4N	
SCALE: N/A	
DRAWN BY: P LAPONIUS	3/20/97
CHECKER: J MICHAUD	4/1/97
DSN APPVL: K WOOD	9/19/96
MFG APPVL: --	--
QC APPVL: G VARID	10/15/96
MKT APPVL: G SCHWEBLER	10/15/96
PROJ FAM: --	
PROJECT #: --	
DOCUMENT TYPE: Sales	
REL LEVEL: AutoCAD	
DRAWING NO	REV
SD081315	0
SHEET 5 OF 8	