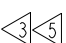
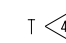
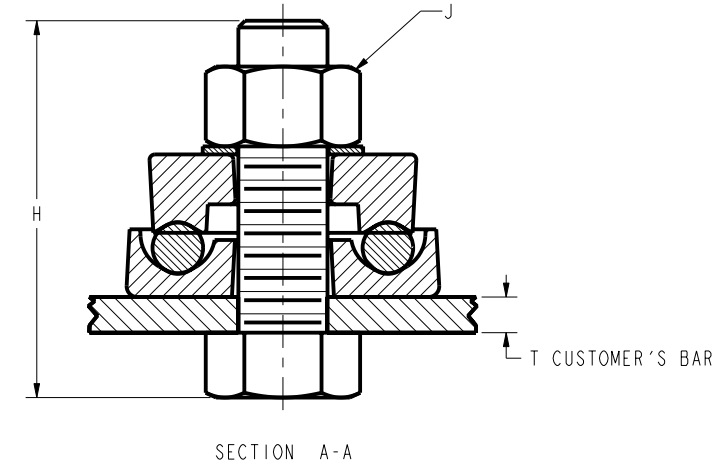
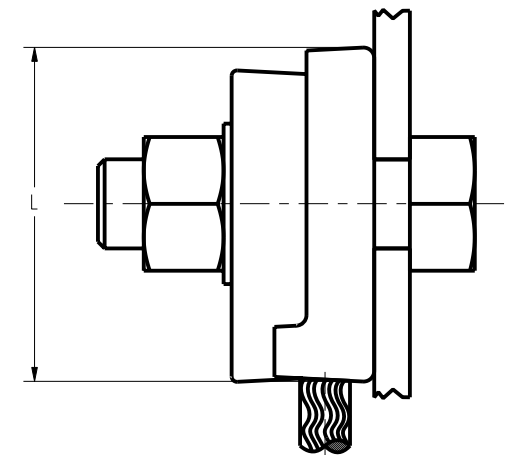
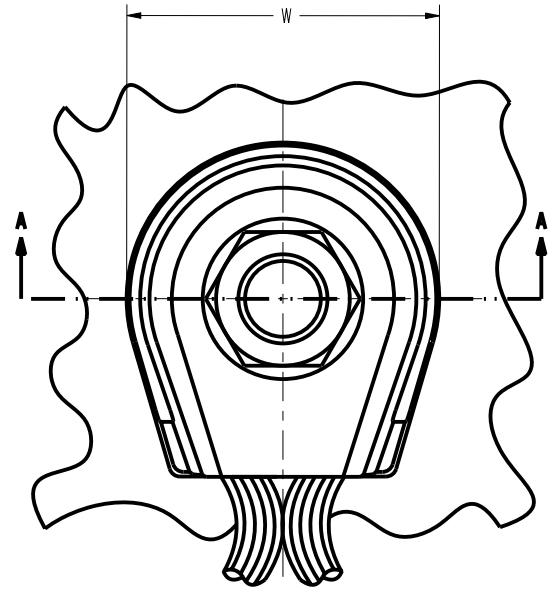


DRAWING NO.  
SD208785-01

REV	DATE	DESCRIPTION	ECO	BY	C'H'K.
C	2019-07-01 22:00:00 EDT	DRAWING UPDATED AS PER NEW DIMENSIONS	51716	PB	RG

CONDUCTOR RANGE (AWG)	CONDUCTOR RANGE (METRIC WIRE SIZE)	CATALOG. NO. 	H	J	W	L	T 	TORQUE	
								Lb*in	N*m
8 STR (.146 DIA) - 4 STR (.232 DIA)	[10mm <sup>2</sup> STR (4.1 DIA) - 16mm <sup>2</sup> STR (5.1 DIA)]	GZ4C-38	1.50 [38]	3/8" [10]	1.06 [27]	1.38 [35]	.25 [6]	240	27.0
		GZ4C-12	1.80 [46]	1/2" [13]	1.50 [38]	1.66 [42]		480	54.1
		GZ4C-58	1.90 [48]	5/8" [16]	1.50 [38]	1.66 [42]		660	74.4
3 STR (.260 DIA) - 2/0 STR (.416 DIA)	[25mm <sup>2</sup> STR (6.5 DIA) - 70mm <sup>2</sup> STR (10.9 DIA)]	GZ26-38	2.00 [51]	3/8" [10]	1.59 [40]	1.88 [48]		240	27.0
		GZ26-12	2.05 [52]	1/2" [13]	1.75 [44]	1.88 [48]		480	54.1
		GZ26-58	2.10 [53]	5/8" [16]	1.75 [44]	1.88 [48]		660	74.4
3/0 STR (.470 DIA) - 250 kcmil (.575 DIA)	[95mm <sup>2</sup> STR (12.8 DIA) - 120mm <sup>2</sup> STR (14.4 DIA)]	GZ29-38	2.25 [57]	3/8" [10]	2.18 [55]	2.34 [59]		240	27.0
		GZ29-12	2.30 [58]	1/2" [13]	2.18 [55]	2.34 [59]		480	54.1
		GZ29-58	2.40 [61]	5/8" [16]	2.18 [55]	2.34 [59]		660	74.4



NOTES:

- MATERIAL: CAST COPPER ALLOY.
- DIMENSIONS IN BRACKETS [ ] ARE IN MILLIMETERS ROUNDED OFF TO THE NEAREST MILLIMETER, UNLESS OTHERWISE NOTED, AND ARE FOR REFERENCE ONLY.
- ALL CATALOG NUMBERS ARE UL "UL" 467 LISTED, FILE NO. E9999.
- FOR BAR THICKNESS FROM 1/4" TO 1/2" ADD THE SUFFIX "T4" TO THE CATALOG NUMBER. FOR BAR THICKNESS FROM 1/2" TO 1" ADD THE SUFFIX "T8" TO THE CATALOG NUMBER.
- FOR TIN PLATED BODY ADD SUFFIX TN. FOR TIN PLATED BODY AND HARDWARE ADD SUFFIX W.

SUPERSEDES: SC18572 & SA8698N2

TO ORDER BURNDY® PRODUCTS CALL		GROUND CLAMP	
UNITED STATES 1-800-346-4175 (LONDONDERRY, NH)		ITEM NO: NA	SCALE: 2:1
CANADA: 1-800-361-6975 (QUEBEC) 1-800-387-6487 (ALL OTHER PROVINCES)		CAT. NO: GZ-(TABLE)	REV
FOR PRODUCT INFO: <a href="http://www.burndy.com">http://www.burndy.com</a>		DRAWN BY: J MICHAUD 10/27/93	SD208785-01
		CHECKER: K HENRY 11/02/93	C
		DSN APPVL: K MELLO 11/03/93	
		MFG APPVL: G DITROIA 11/03/93	
		QA APPVL: A LLOYD 11/03/93	
		MKT APPVL: P MCAULEY 11/03/93	
		PROJ #: DO 52808	
		DOCUMENT TYPE: Sales	
		REL LEVEL: Released	

REV: PE0200