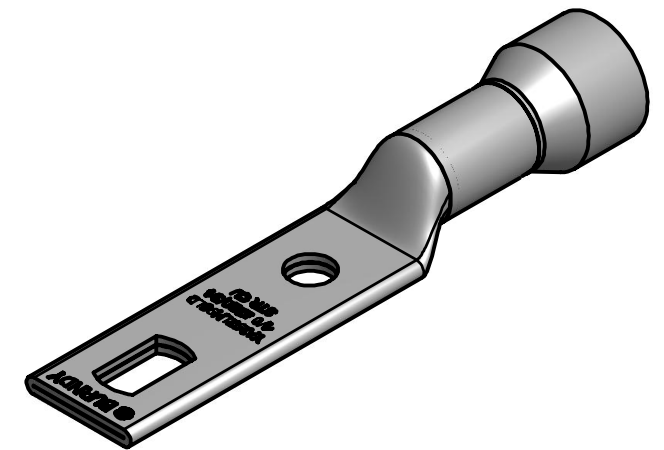
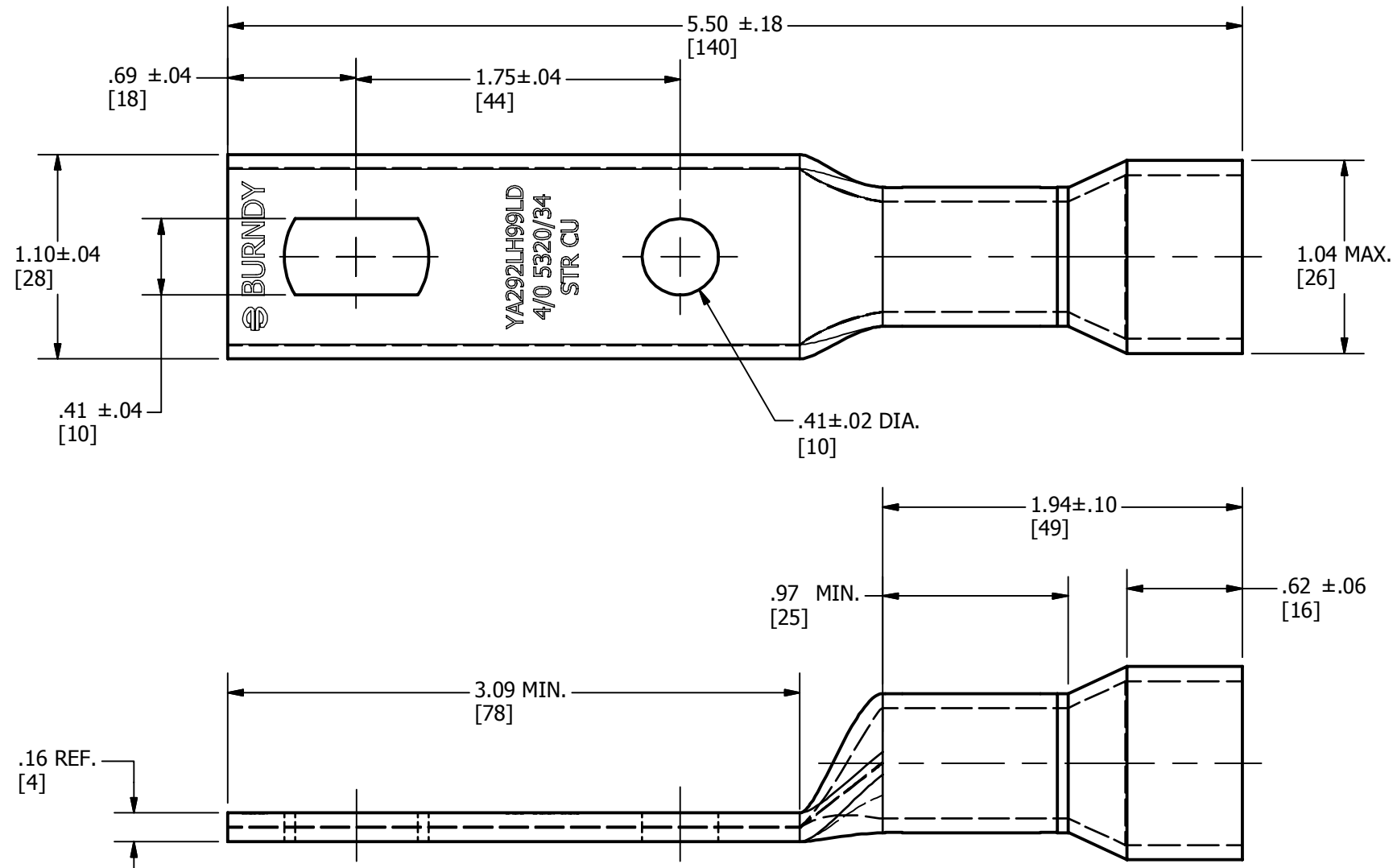


CU CONDUCTOR	DIE TYPE	INSTALLATION TOOLING (# OF CRIMPS) \triangleleft 7			
		MECHANICAL RATCHET		HYDRAULIC	
		MD6,MD7,MD6--2,PAT600, PATMD6,MD7-34R,BCT500	Y35,Y39, Y750,PAT750	Y46 \triangleleft 4 5	Y45 \triangleleft 3 5
4/0 AWG CLASS M (5320/34)	DIE SET	W28RT (2)	U28RT (1)	U28RT (1)	U28RT (1)
	NEST	--	U29D-1(1)	U29D-1(1)	U29D-1(1)
	INDENTOR	--	Y34PR	Y34PR	Y34PR

REV	DATE	DESCRIPTION	ECO	BY	C'H'K.
A	11/09/2015	REDRAW IN INVENTOR	42106	AV	MB



NOTES:

1. MATERIAL: COPPER TUBING.
2. FINISH: LEAD PLATED
- 3 \triangleleft CATALOG #PT6515 ADAPTOR IS REQUIRED TO USE "U" DIES IN Y45 SERIES TOOLS.
- 4 \triangleleft CATALOG #PUADP-1 ADAPTOR IS REQUIRED TO USE "U" DIES IN Y46 SERIES TOOLS
- 5 \triangleleft Y35P3 INDENTOR ADAPTOR IS REQUIRED FOR Y34PR INDENTOR.
6. DIMENSIONS IN BRACKETS [] ARE IN MILLIMETERS ROUNDED OFF TO THE NEAREST MILLIMETER, UNLESS OTHERWISE NOTED, AND ARE FOR REFERENCE ONLY.
- 7 \triangleleft USE HEAT SHRINK TO CLOSE GAP BETWEEN SHROUD AND WIRE INSULATION.

TO ORDER BURNDY PRODUCTS CALL		HYSEALUG™	
UNITED STATES		ITEM NO: 612281	
1-800-346-4175 (LONDONDERRY, NH)		CAT. NO: YA292LH99LD	
CANADA:		DRAWN BY: AVINASH V 11/9/2015	
1-800-361-6975 (QUEBEC)		CHECKER: MANIKANDAN B 11/9/2015	
1-800-387-6487 (ALL OTHER PROVINCES)		DSN APRVL: --	
FOR PRODUCT INFO: http://www.burndy.com		MFG APRVL: --	
		QA APRVL: --	
		MKT APRVL: --	
		PROD FAM: CM&R COMPRESSION	
		DRAWING NO	
		SD212368	
		REV	
		A	
		SHEET 1 OF 1	