

DRAWING NO.
SD214381

CATALOG NUMBER	CONDUCTOR		NAVY	FIG. NO.	BOLT SIZE	DIMENSIONS										DIE INDEX	COLOR CODE	INSTALLATION TOOLING (# CRIMPS)			DIELESS (# CRIMPS)	WIRE STRIP LENGTH
	FLEX	CODE (AWG)				B	C	H MIN.	K DIA.	L	N	O.D.	T REF.	Z MIN.	MECHANICAL			HYDRAULIC				
YAV28L-TC12FXG2	4/0 WELD 550/24	4/0	200	1	1/2	1.03	1.14	--	.53	3.07	.53	.77	.15	.90	15	PURPLE	W28RT (2)	U28RT (1)	U28RT (1)	MECHANICAL: MY29-11 (1)	1'-1/16"	
[26]						[29]	[13]	[78]	[13]	[20]	[4]	[23]										
YAV28L-TC12FXG3	4/0 WELD 550/24	4/0	200	2	1/2	1.03	1.14	.89	.53	3.07	.53	.77	.15	.55	15	PURPLE	W28RT (3)	U28RT (1)	U28RT (1)	MECHANICAL: MY29-11 (1)	1'-1/16"	
[26]						[29]	[23]	[78]	[13]	[20]	[4]	[14]										
YAV28L-TC38FXG2	4/0 WELD 550/24	4/0	200	1	3/8	1.03	1.14	--	.41	2.82	.41	.77	.15	.77	15	PURPLE	W28VT (2)	UR420WE (1)	UR420WE (1)	HYDRAULIC: Y644M (1)	1'-1/16"	
[26]						[29]	[10]	[72]	[10]	[20]	[4]	[20]										
YAV28L-TC38FXG3	4/0 WELD 550/24	4/0	200	2	3/8	1.03	1.14	.89	.41	2.82	.41	.77	.15	.42	15	PURPLE	W28VT (2)	UR420WE (1)	UR420WE (1)	HYDRAULIC: Y644M (1)	1'-1/16"	
[26]						[29]	[23]	[72]	[10]	[20]	[4]	[11]										

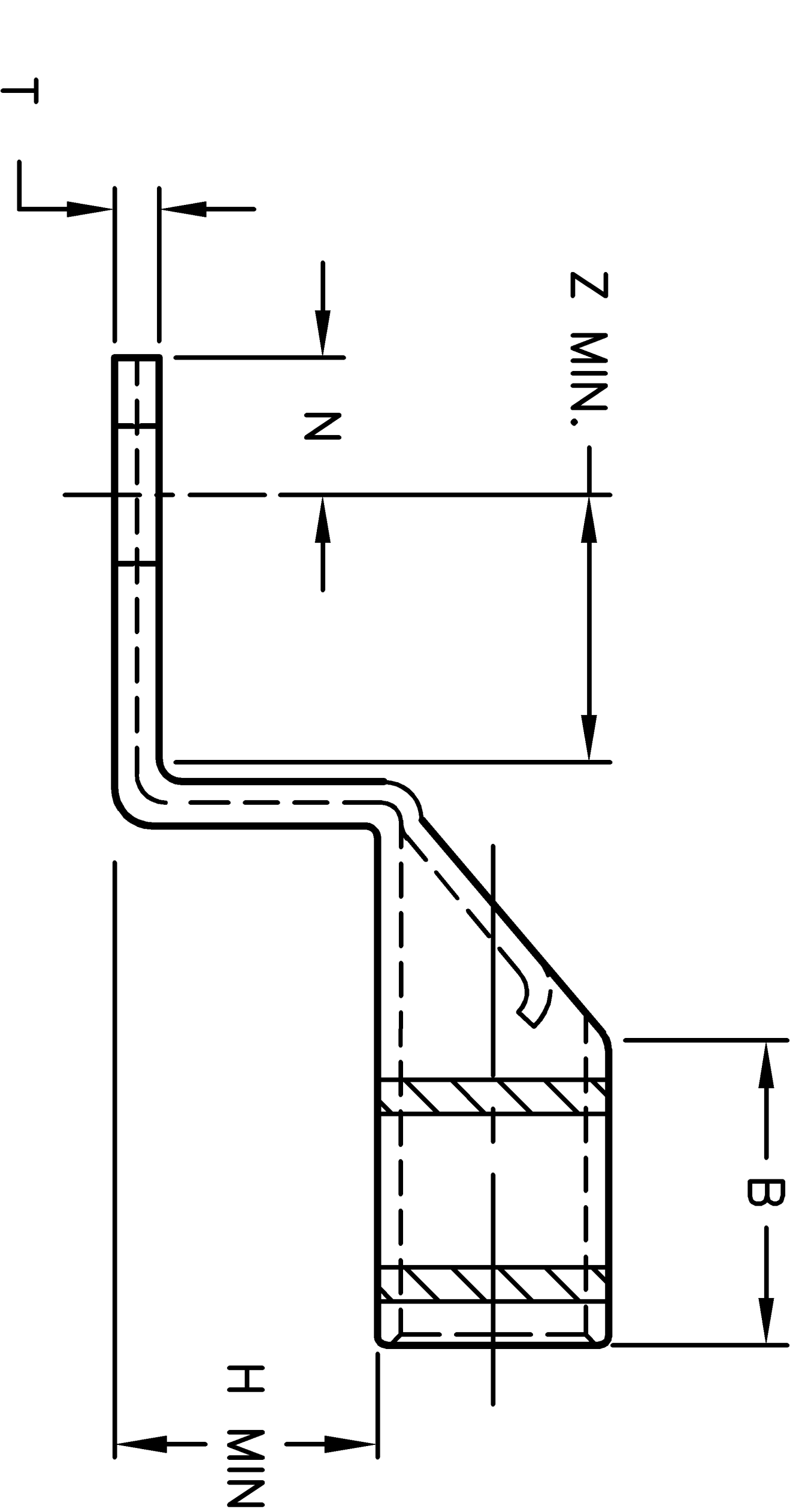
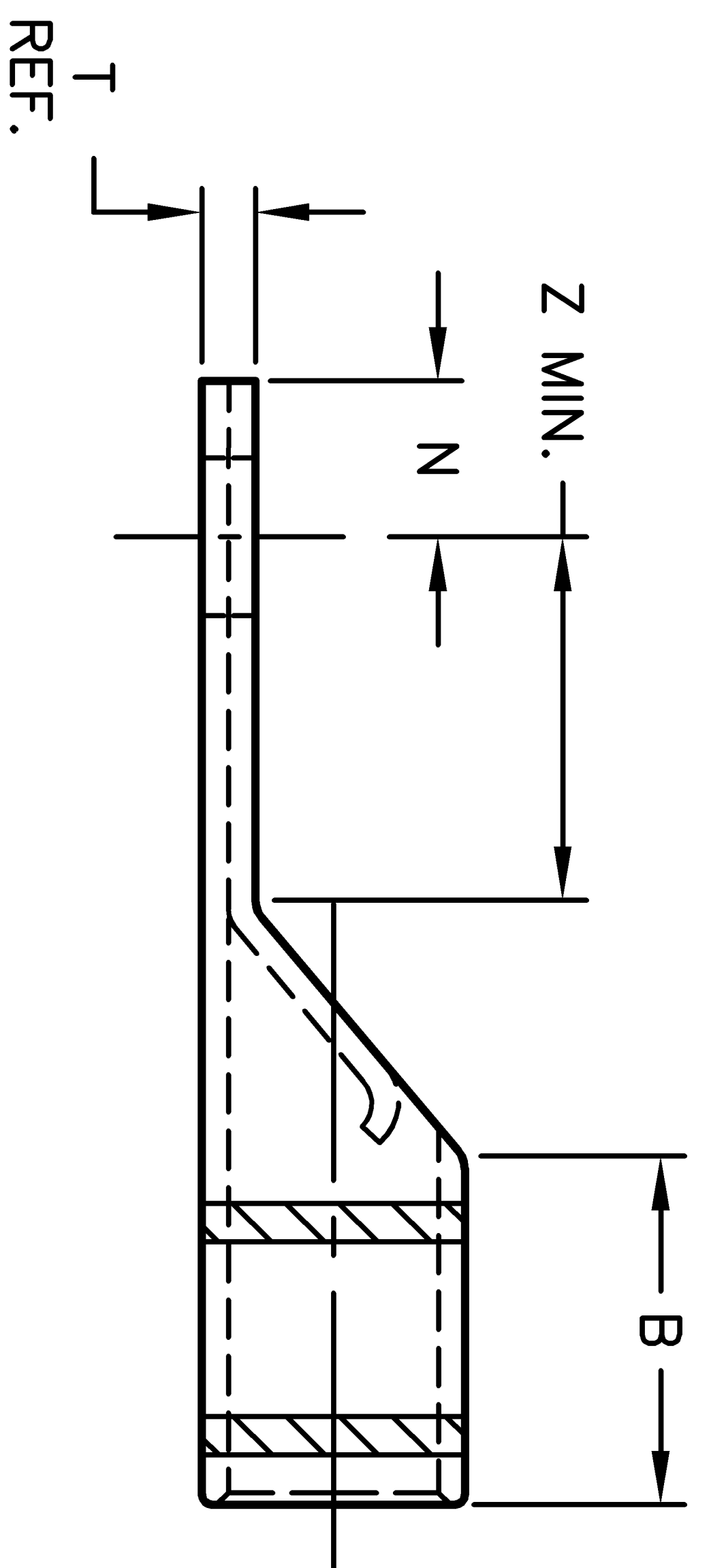
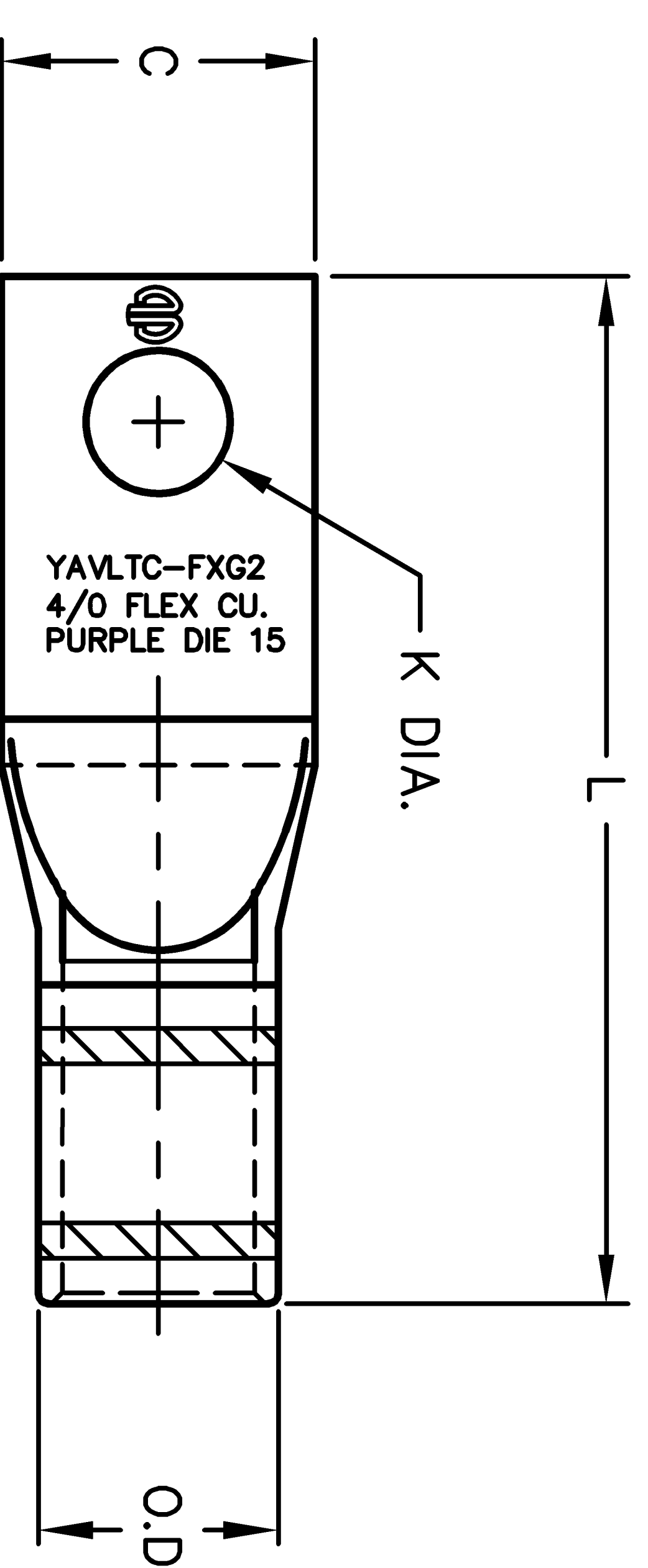
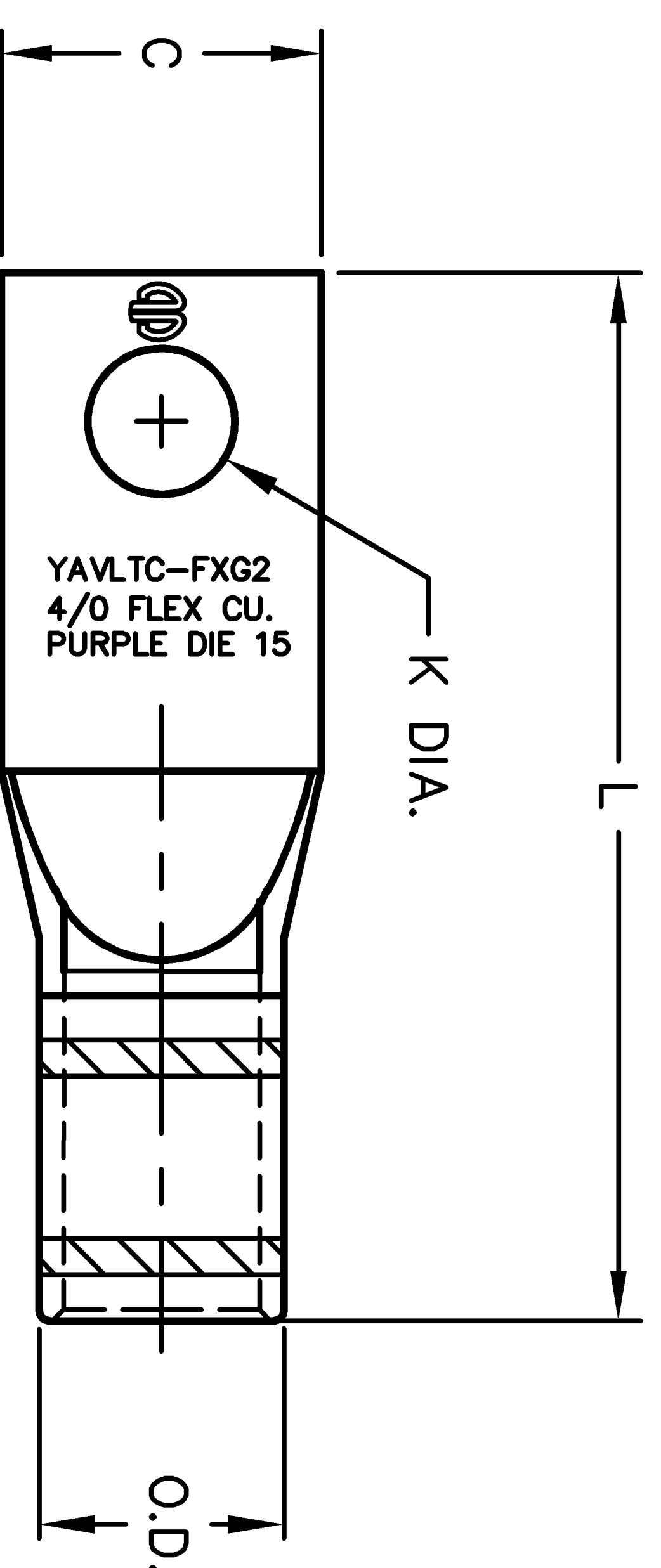


FIG. 1

FIG. 2

NOTES:

1. MATERIAL: COPPER TUBING.
2. FINISH: TIN PLATED.
3. CATALOG # PT6515 ADAPTOR IS REQUIRED TO USE "U" DIES IN Y45 SERIES TOOLS.
4. CATALOG # PUADP-1 ADAPTOR IS REQUIRED TO USE "U" DIES IN Y46 SERIES TOOLS.
5. NAVY CABLE SIZE MAY BE OMITTED ON SOME SIZES BECAUSE OF SPACE LIMITATIONS.
6. DIMENSIONS IN BRACKETS [] ARE IN MILLIMETERS, ROUNDED OFF TO THE NEAREST MILLIMETER, UNLESS OTHERWISE NOTED, AND ARE FOR REFERENCE ONLY.

REV.	DATE	DESCRIPTION	ECO	BY	PL	U/LM
A	2/15/02	DRAWING RELEASED, TYPED CHANGED DIE CODE INDEX FROM #5 TO 15 (4/15/02 PL)	7267	PL	U/LM	

TO ORDER BURNDY PRODUCTS CALL 1-800-346-4175
MANCHESTER, NH 03109, USA
FOR PRODUCT INFO = <http://www.fciconnect.com>

HYLUG™

CAT NO. YAV28L-TC--FXG-	(TABLE)	SCALE
DRAWN: P. LAPONUIS	2/15/02	CHECKED: J. MICHAUD
DSN: APPVL: J. MICHAUD	2/15/02	MFG APPVL: N/A
QA: APPVL: J. BRODEUR	2/13/02	
MKTG APPVL: N/A		
CAD FILE: SD214381-01-A		
MDL REF: N/A		

FCI

DRAWING NO. SD214381
SHEET 1 of 1