

Catalog Number	Wire Size		Fig	Stud Size	Dimensions								Color Code Die Index	Wire Strip Length	Temp Rating
	Class B Conductor (AL)	Class B,C Conductor (CU)			Stud Hole Diameter (K)	Outside Diameter (OD)	Barrel Length (B)	Pad Width (C)	Overall Length (L)	Hole Spacing (E)	Hole Offset (N)	Pad Thickness (T)			
YA8CA3S56T14E	8 AWG	8 AWG	1	1/4	0.28	0.30	0.62	0.56	1.65	-	0.33	0.09	Blue 374	11/16"	AL7CU
YA2CA5S53T14E	2 AWG	2 AWG	1	1/4	0.28	0.53	1.00	0.53	2.25	-	0.33	0.22	Pink 348	1-1/16"	AL9CU
YA2CA1S91T516E	2 AWG	2 AWG	1	5/16	0.38	0.53	1.12	0.91	2.50	-	0.41	0.16	Pink 348	1-3/16"	AL9CU
YA25A1S561T14E	1/0 AWG	1/0 AWG	1	1/4	0.28	0.60	1.00	0.61	2.18	-	0.33	0.21	Tan 296	1-1/16"	AL9CU
YA25A1S60T516E	1/0 AWG	1/0 AWG	1	5/16	0.38	0.60	1.00	0.63	2.29	-	0.41	0.21	Tan 296	1-1/16"	AL9CU
YA25A3N69T38E	1/0 AWG	1/0 AWG	1	3/8	0.44	0.60	1.05	0.69	2.38	-	0.44	0.21	Tan 296	1-1/8"	AL9CU
YA26A13N100T516E	2/0 AWG	2/0 AWG	1	5/16	0.38	0.67	1.11	1.00	2.45	-	0.41	0.24	Olive 297	1-3/16"	AL9CU
YA26A6N100T38E	2/0 AWG	2/0 AWG	1	3/8	0.44	0.67	1.11	1.00	2.53	-	0.44	0.24	Olive 297	1-3/16"	AL9CU
YA27A10S76T516E	3/0 AWG	3/0 AWG	1	5/16	0.38	0.76	1.11	0.76	2.58	-	0.44	0.26	Ruby 467	1-3/16"	AL9CU
YA28A14N100T516E	4/0 AWG	4/0 AWG	1	5/16	0.38	0.85	1.39	1.00	2.85	-	0.41	0.30	White 298	1-7/16"	AL9CU
YA28A1N100T38E	4/0 AWG	4/0 AWG	1	3/8	0.44	0.85	1.39	1.00	2.94	-	0.44	0.30	White 298	1-7/16"	AL9CU
YA30A1N131T12E	300 kcmil	300 kcmil	1	1/2	0.53	1.01	1.53	1.31	3.57	-	0.63	0.35	Blue 470	1-5/8"	AL9CU
YA30A9N100T516E	300 kcmil	300 kcmil	1	5/16	0.38	1.01	1.53	1.00	3.12	-	0.41	0.36	Blue 470	1-5/8"	AL9CU
YA30A6N100T38E	300 kcmil	300 kcmil	1	3/8	0.44	1.01	1.53	1.00	3.20	-	0.44	0.36	Blue 470	1-5/8"	AL9CU
YA31A11N100T516E	350 kcmil	350 kcmil	1	5/16	0.38	1.10	1.85	1.00	3.51	-	0.41	0.39	Brown 299	2"	AL9CU
YA31A9N100T38E	350 kcmil	350 kcmil	1	3/8	0.44	1.10	1.85	1.00	3.59	-	0.44	0.39	Brown 299	2"	AL9CU
YA32A8N106T516E	400 kcmil	400 kcmil	1	5/16	0.38	1.19	2.26	1.06	3.92	-	0.41	0.43	Green 472	2-5/16"	AL9CU
YA34A7N131T12E	500 kcmil	500 kcmil	1	1/2	0.53	1.31	1.64	1.31	3.88	-	0.63	0.35	Pink 300	1-11/16"	AL9CU
YA34A7N119TD12E	500 kcmil	500 kcmil	1	1/2	0.53	1.31	1.64	1.19	3.88	-	0.63	0.33	Pink 300	1-11/16"	AL9CU
YA34A8N131T38E	500 kcmil	500 kcmil	1	3/8	0.44	1.31	1.64	1.31	3.49	-	0.44	0.39	Pink 300	1-11/16"	AL9CU
YA34A3N131T12E	500 kcmil	500 kcmil	2	1/2	0.53	1.31	1.64	1.31	5.71	1.75	0.63	0.39	Pink 300	1-11/16"	AL9CU
YA36A9N131TD12E	600 kcmil	600 kcmil	1	1/2	0.53	1.31	1.64	1.31	3.95	-	0.63	0.39	Pink 300	1-11/16"	AL9CU
YA36A3N131TD38E	600 kcmil	600 kcmil	2	3/8	0.44	1.31	1.64	1.31	5.32	1.75	0.44	0.39	Pink 300	1-11/16"	AL9CU
YA36A3N131TD12E	600 kcmil	600 kcmil	2	1/2	0.53	1.31	1.64	1.31	5.71	1.75	0.63	0.39	Pink 300	1-11/16"	AL9CU
YA39A1N131TD12E	750 kcmil	-	1	1/2	0.53	1.31	1.86	1.31	4.28	-	0.63	0.31	Pink 300	2"	AL9CU
	900 CMPT ONLY	-	-	-	-	-	-	-	-	-	-	-	-	-	-
YA39A5N131TD12E	750 kcmil	-	2	1/2	0.53	1.31	1.86	1.31	4.28	1.75	0.63	0.31	Pink 300	2"	AL9CU
	900 CMPT ONLY	-	-	-	-	-	-	-	-	-	-	-	-	-	-

REV	DATE	DESCRIPTION	ECO	BY	C'H'K.
T	08/03/2021	RECREATED IN INVENTOR	210803010788	SS	WP

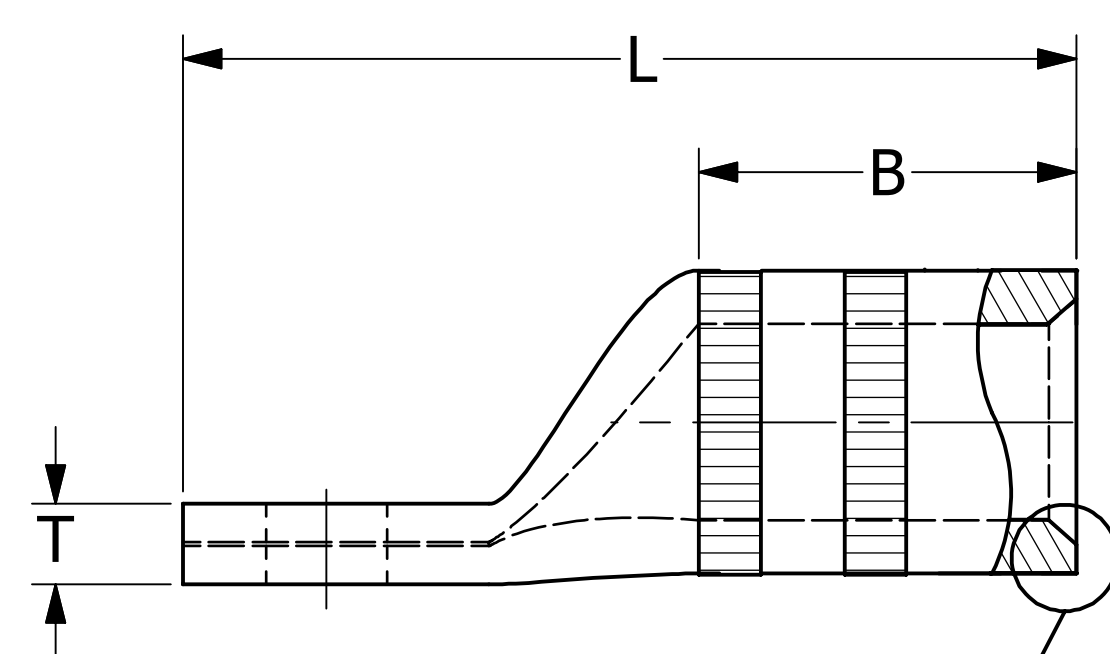
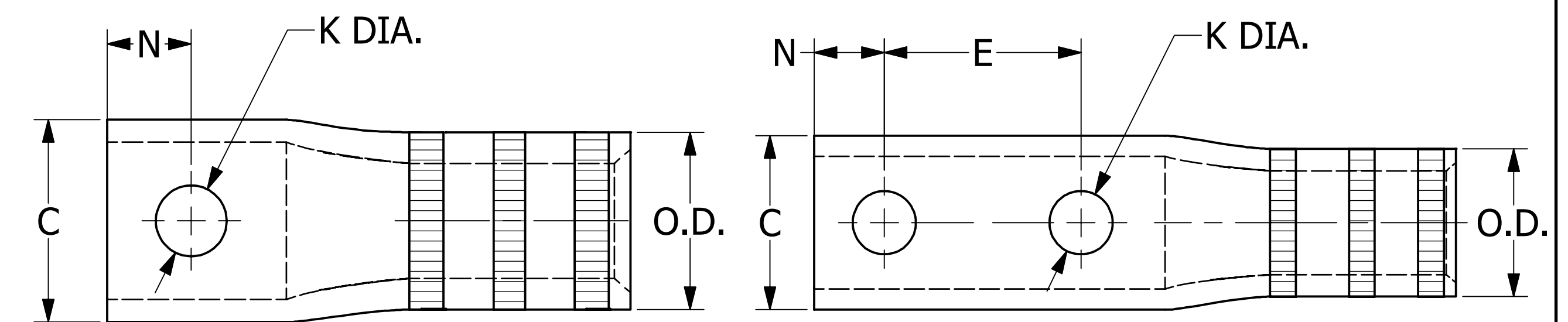
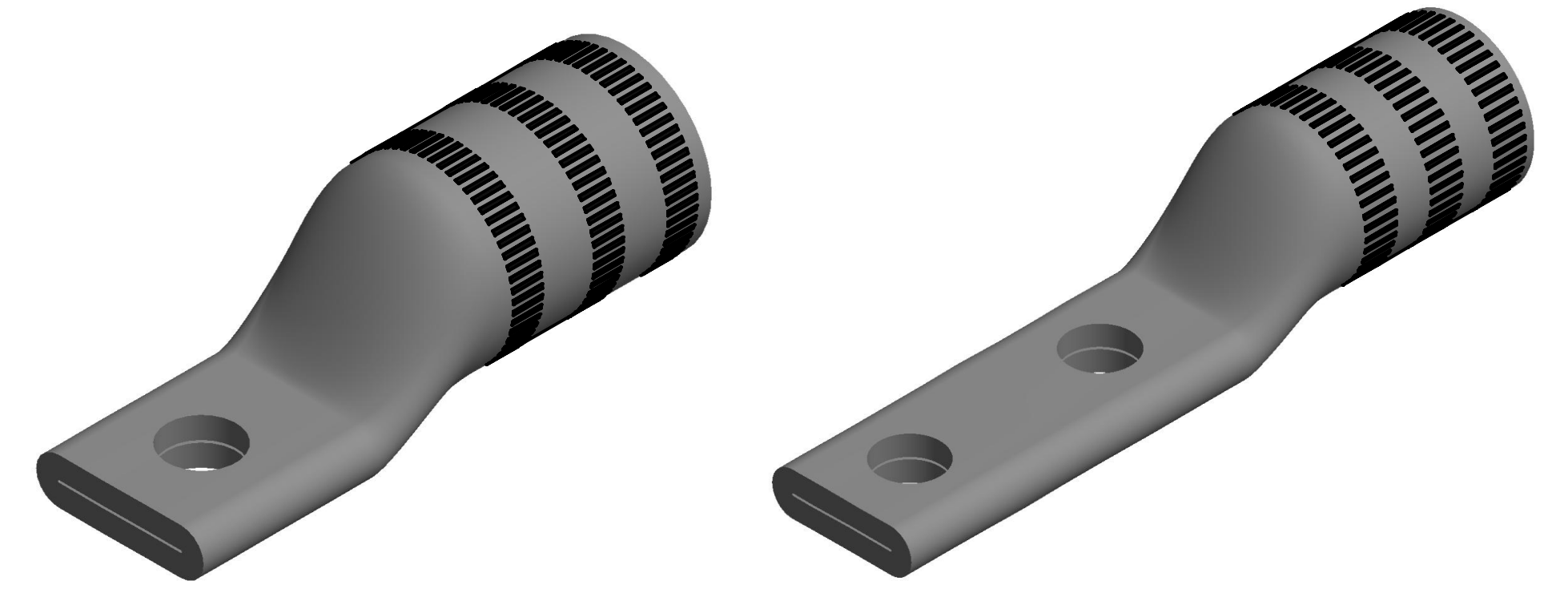
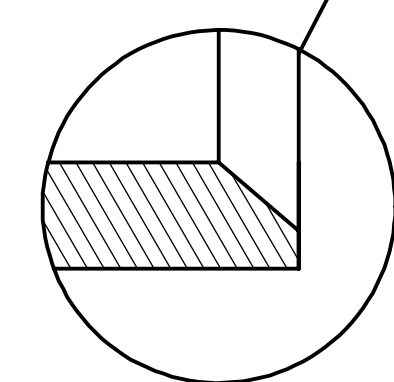


FIGURE -1



INTERNAL CHAMFER

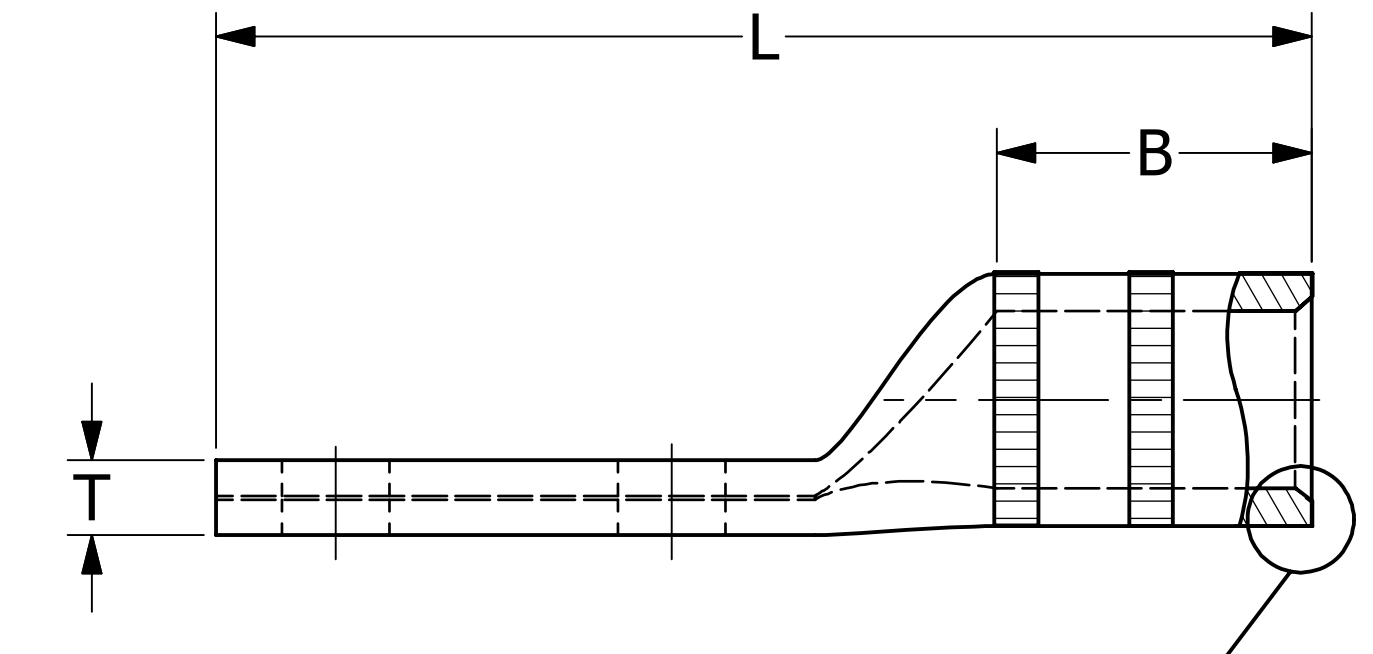
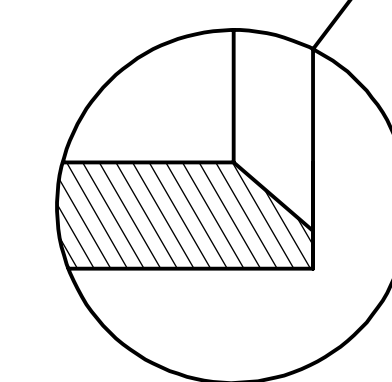


FIGURE -2



INTERNAL CHAMFER

- NOTES:
- CONNECTOR: TIN PLATED ALUMINUM COMPRESSION TERMINAL.
 - CONNECTION: COMPRESSION CONNECTIONS MADE ARE IRREVERSIBLE AND MAINTENANCE FREE.
 - APPLICABLE STANDARDS: PRODUCTS ARE ONLY UL LISTED AND CSA CERTIFIED WHEN INSTALLED USING THE BURNDY ENGINEERED SYSTEM: TOOLS, DIES (IF APPLICABLE), AND CONNECTORS.
 - UL LISTED TO UL486A-486B-WIRE CONNECTORS
 - CSA C22.2 NO 65.
 - TEMPERATURE AND VOLTAGE RATING:
 - UL LISTED 90°C OR 75°C, UP TO 35KV.
 - ALUMINUM CONNECTORS MARKED AL9CU ACCOMMODATE ALUMINUM (AL) AND COPPER (CU) WIRE UP TO 90°C.
 - ALUMINUM CONNECTORS MARKED AL7CU ACCOMMODATE ALUMINUM (AL) AND COPPER (CU) WIRE UP TO 75°C.
 - WIRE ACCOMMODATE TYPES (SEE TABLE): DUAL RATED TO ACCOMMODATE ALUMINUM AND COPPER WIRE.
 - ALUMINUM WIRE (AL): CLASS B (CONCENTRIC, COMPRESS, COMPACT).
 - CODE COPPER WIRE (CU) CLASS B (CONCENTRIC, COMPRESS, COMPACT) OR CLASS C STRANDING.
 - FEATURES:
 - TYPICAL BARREL ROLL MARKINGS (AS SPACE PERMITS): CRIMP ZONE IS INDICATED BY KNURL BANDS, BURNDY CORPORATE NAME OR LOGO, UL LOGO (IF APPLICABLE), CSA LOGO (IF APPLICABLE), WIRE SIZE, DIE COLOR CODE, DIE INDEX NUMBER.
 - BARREL DESIGN: BARREL END AT THE WIRE HAS AN INTERNAL CHAMFER, ALLOWING FOR A SMOOTH WIRE INSERTION AND IS SHORTER IN LENGTH THAN A STANDARD BARREL TO ACCOMMODATE LIMITED SPACE APPLICATIONS.
 - TERMINALS ARE PREFILLED WITH PENETROX™ A13, WHICH IS AN OXIDE INHIBITOR.
 - EACH TERMINAL HAS A COLOR-CODED END CAP TO MATCH THE DIE COLOR CODE. THIS CAP ALSO PREVENTS PARTICLES FROM ENTERING THE BARREL.
 - PAD/TONGUE/TANG/SPADE DESIGN: ONE-HOLE AND TWO-HOLE DESIGNS WITH A NARROW PAD WIDTH FOR CLOSE MOUNTING REQUIREMENTS.
 - INSTALLATION TOOLING AND DIES ARE CONSTANTLY BEING UPDATED. PLEASE SEE BURNDY MASTER CATALOG FOR THIS PRODUCT FAMILY, WHICH CAN BE FOUND ON THE BURNDY WEBSITE.
 - YA39A- CONNECTORS: 900 KCMIL CLASS B COMPACT ALUMINUM WIRE IS UL LISTED WITH THE 444/644 SERIES DIELESS TOOLS ONLY.

TO ORDER BURNDY® PRODUCTS CALL		HYLUG™													
UNITED STATES 1-800-346-4175 (LONDONDERRY, NH)		ITEM NO: SEE TABLE													
CANADA: 1-800-361-6975 (QUEBEC) 1-800-387-6487 (ALL OTHER PROVINCES)		CAT. NO: SEE TABLE													
FOR PRODUCT INFO: http://www.burndy.com		<table border="1"> <tr><td>DRAWN BY: P.LAPONIUS</td><td>02-11-2002</td></tr> <tr><td>CHECKER: G.ZAHLMAN</td><td>03-19-2002</td></tr> <tr><td>DSN APRVL: G.ZAHLMAN</td><td>03-19-2002</td></tr> <tr><td>MFG APRVL: --</td><td>--</td></tr> <tr><td>QA APRVL: J.BRODEUR</td><td>03-19-2002</td></tr> <tr><td>MKT APRVL: R.ROBICHEAU</td><td>03-19-2002</td></tr> </table>		DRAWN BY: P.LAPONIUS	02-11-2002	CHECKER: G.ZAHLMAN	03-19-2002	DSN APRVL: G.ZAHLMAN	03-19-2002	MFG APRVL: --	--	QA APRVL: J.BRODEUR	03-19-2002	MKT APRVL: R.ROBICHEAU	03-19-2002
DRAWN BY: P.LAPONIUS	02-11-2002														
CHECKER: G.ZAHLMAN	03-19-2002														
DSN APRVL: G.ZAHLMAN	03-19-2002														
MFG APRVL: --	--														
QA APRVL: J.BRODEUR	03-19-2002														
MKT APRVL: R.ROBICHEAU	03-19-2002														
		<table border="1"> <tr><td>PROJECT #:</td><td>SIZE</td><td>DRAWING NO</td><td>REV</td></tr> <tr><td>DOCUMENT TYPE: SALES</td><td>D</td><td>SD214515-01</td><td>T</td></tr> <tr><td>REL LEVEL: Released</td><td></td><td>SHEET 1 OF 3</td><td></td></tr> </table>		PROJECT #:	SIZE	DRAWING NO	REV	DOCUMENT TYPE: SALES	D	SD214515-01	T	REL LEVEL: Released		SHEET 1 OF 3	
PROJECT #:	SIZE	DRAWING NO	REV												
DOCUMENT TYPE: SALES	D	SD214515-01	T												
REL LEVEL: Released		SHEET 1 OF 3													

Catalog Number Type	Wire Size		Expanded Wire Range using 444/644 Series AL/CU	Wire Strip Length	Color Code Die Index	Hydraulic Tools - Dies Required (# Crimps)				Hydraulic Tools - Dieless # Crimps	
	Class B Conductor (AL)	Class B,C Conductor (CU)				750, 35 Series	45 Series Use PT6515 with U Dies	46 Series Use PUADP1 with U Dies	60 Series	81K, 4PC Series	444 644 Series
YA8CA3S56T14E	8 AWG	8 AWG	-	11/16"	Blue 374	U8CABT (1)	U8CABT (1)	U8CABT (1)	-	1 Crimp	-
YA2CA5S53T14E	2 AWG	2 AWG	6 AWG-2 AWG	1-1/16"	Pink 348	U2CABT (1)	U2CABT (1)	U2CABT (1)	-	1 Crimp	1 Crimp
YA2CA1S91T516E	2 AWG	2 AWG	6 AWG-2 AWG	1-3/16"	Pink 348	U2CABT (1)	U2CABT (1)	U2CABT (1)	-	1 Crimp	1 Crimp
YA25A15S61T14E	1/0 AWG	1/0 AWG	1 AWG-1/0 AWG	1-1/16"	Tan 296	U25ART (1)	U25ART (1)	U25ART (1)	-	1 Crimp	1 Crimp
YA25A1S60T516E	1/0 AWG	1/0 AWG	1 AWG-1/0 AWG	1-1/16"	Tan 296	U25ART (1)	U25ART (1)	U25ART (1)	-	1 Crimp	1 Crimp
YA25A3N69T38E	1/0 AWG	1/0 AWG	1 AWG-1/0 AWG	1-1/8"	Tan 296	U25ART (1)	U25ART (1)	U25ART (1)	-	1 Crimp	1 Crimp
YA26A13N100T516E	2/0 AWG	2/0 AWG	1 AWG-2/0 AWG	1-3/16"	Olive 297	U26ART (2)	U26ART (2)	U26ART (2)	L26ART (2)	2 Crimps Overlap	1 Crimp
YA26A6N100T38E	2/0 AWG	2/0 AWG	1 AWG-2/0 AWG	1-3/16"	Olive 297	U26ART (2)	U26ART (2)	U26ART (2)	L26ART (2)	2 Crimps Overlap	1 Crimp
YA27A10S76T516E	3/0 AWG	3/0 AWG	1 AWG-3/0 AWG	1-3/16"	Ruby 467	U27ART (2)	U27ART (2)	U27ART (2)	L27ART (2)	2 Crimps Overlap	1 Crimp
YA28A14N100T516E	4/0 AWG	4/0 AWG	1/0 AWG-4/0 AWG	1-7/16"	White 298	U28ART (2)	U28ART (2)	U28ART (2)	L28ART (2)	2 Crimps Overlap	1 Crimp
YA28A1N100T38E	4/0 AWG	4/0 AWG	1/0 AWG-4/0 AWG	1-7/16"	White 298	U28ART (2)	U28ART (2)	U28ART (2)	L28ART (2)	2 Crimps Overlap	1 Crimp
YA30A1N131T12E	300 kcmil	300 kcmil	2/0 AWG-300 kcmil	1-5/8"	Blue 470	U30ART (2)	U30ART (2)	U30ART (2)	L30ART (1)	2 Crimps Overlap	1 Crimp
YA30A9N100T516E	300 kcmil	300 kcmil	2/0 AWG-300 kcmil	1-5/8"	Blue 470	U30ART (2)	U30ART (2)	U30ART (2)	L30ART (1)	2 Crimps Overlap	1 Crimp
YA30A6N100T38E	300 kcmil	300 kcmil	2/0 AWG-300 kcmil	1-5/8"	Blue 470	U30ART (2)	U30ART (2)	U30ART (2)	L30ART (1)	2 Crimps Overlap	1 Crimp
YA31A11N100T516E	350 kcmil	350 kcmil	3/0 AWG-350 kcmil	1-29/32"	Brown 299	U31ART (4)	U31ART (4)	U31ART (4)	L31ART (1)	2 Crimps Overlap	1 Crimp
YA31A9N100T38E	350 kcmil	350 kcmil	3/0 AWG-350 kcmil	1-29/32"	Brown 299	U31ART (4)	U31ART (4)	U31ART (4)	L31ART (1)	2 Crimps Overlap	1 Crimp
YA32A8N106T516E	400 kcmil	400 kcmil	4/0 AWG-400 kcmil	2-5/16"	Green 472	U32ART (4)	U32ART (4)	U32ART (4)	L32ART (2)	2 Crimps Overlap	1 Crimp
YA34A7N131T12E	500 kcmil	500 kcmil	4/0 AWG-500 kcmil	1-11/16"	Pink 300	U34ART (4) Overlap	U34ART (4) Overlap	U34ART (4) Overlap	L34ART (2)	2 Crimps Overlap	1 Crimp
YA34A7N119TD12E	500 kcmil	500 kcmil	4/0 AWG-500 kcmil	1-11/16"	Pink 300	U34ART (4) Overlap	U34ART (4) Overlap	U34ART (4) Overlap	L34ART (2)	2 Crimps Overlap	1 Crimp
YA34A8N131T38E	500 kcmil	500 kcmil	4/0 AWG-500 kcmil	1-11/16"	Pink 300	U34ART (4) Overlap	U34ART (4) Overlap	U34ART (4) Overlap	L34ART (2)	2 Crimps Overlap	1 Crimp
YA34A3N131T12E	500 kcmil	500 kcmil	4/0 AWG-500 kcmil	1-11/16"	Pink 300	U34ART (4) Overlap	U34ART (4) Overlap	U34ART (4) Overlap	L34ART (2)	2 Crimps Overlap	1 Crimp
YA36A9N131TD12E	600 kcmil	600 kcmil	250 kcmil-600 kcmil	1-11/16"	Pink 300	U34ART (4) Overlap	U34ART (4) Overlap	U34ART (4) Overlap	L34ART (2)	2 Crimps Overlap	1 Crimp
YA36A3N131TD38E	600 kcmil	600 kcmil	250 kcmil-600 kcmil	1-11/16"	Pink 300	U34ART (4) Overlap	U34ART (4) Overlap	U34ART (4) Overlap	L34ART (2)	2 Crimps Overlap	1 Crimp
YA36A3N131TD12E	600 kcmil	600 kcmil	250 kcmil-600 kcmil	1-11/16"	Pink 300	U34ART (4) Overlap	U34ART (4) Overlap	U34ART (4) Overlap	L34ART (2)	2 Crimps Overlap	1 Crimp
YA39A1N131TD12E	750 kcmil 900 CMPT ONLY	-	500 kcmil CU 500-900 kcmil AL	1-29/32"	Pink 300	U34ART (4) Overlap	U34ART (4) Overlap	U34ART (4) Overlap	L34ART (2)	2 Crimps Overlap	1 Crimp
YA39A5N131TD12E	750 kcmil 900 CMPT ONLY	-	500-900 kcmil AL	1-29/32"	Pink 300	U34ART (4) Overlap	U34ART (4) Overlap	U34ART (4) Overlap	L34ART (2)	2 Crimps Overlap	1 Crimp

REV	DATE	DESCRIPTION	ECO	BY	C'H'K.
T	08/03/2021	RECREATED IN INVENTOR	210803010788	SS	WP

NOTES:

1. WHEN OVERLAPPING CRIMPS USING U34ART DIE, OVERLAP EACH CONSECUTIVE CRIMP BY 1/4 THE PLOW WIDTH OF THE DIE.
2. SOME CATALOG NUMBERS REQUIRE OVERLAPPING CRIMPS. PLEASE REFER TO THE OVERLAPPING CRIMP IMAGE THAT IS APPLICABLE BASED ON THE NUMBER OF CRIMPS REQUIRED. OVERLAP EACH CONSECUTIVE CRIMP SO THAT THE COMPLETED INSTALLATION OF ALL OVERLAPPING CRIMPS COVERS THE ENTIRE CRIMP ZONE.

TO ORDER BURNDY® PRODUCTS CALL		HYLUG™																												
UNITED STATES 1-800-346-4175 (LONDONDERRY, NH)		ITEM NO: SEE TABLE																												
CANADA: 1-800-361-6975 (QUEBEC) 1-800-387-6487 (ALL OTHER PROVINCES)		CAT. NO: SEE TABLE																												
FOR PRODUCT INFO: http://www.burndy.com		<table border="1"> <tr> <td>DRAWN BY: P.LAPONIUS</td> <td>02-11-2002</td> <td rowspan="4"></td> </tr> <tr> <td>CHECKER: G.ZAHLMAN</td> <td>03-19-2002</td> </tr> <tr> <td>DSN APRVL: G.ZAHLMAN</td> <td>03-19-2002</td> </tr> <tr> <td>MFG APRVL: --</td> <td>--</td> </tr> <tr> <td>QA APRVL: J.BRODEUR</td> <td>03-19-2002</td> <td></td> </tr> <tr> <td>MKT APRVL: R.ROBICHEAU</td> <td>03-19-2002</td> <td></td> </tr> <tr> <td>PROJ FAM: --</td> <td></td> <td>DRAWING NO</td> </tr> <tr> <td>PROJECT #: --</td> <td>SIZE</td> <td>SD214515-01</td> </tr> <tr> <td>DOCUMENT TYPE: SALES</td> <td>D</td> <td>SHEET 2 OF 3</td> </tr> <tr> <td>REL LEVEL: Released</td> <td></td> <td></td> </tr> </table>		DRAWN BY: P.LAPONIUS	02-11-2002		CHECKER: G.ZAHLMAN	03-19-2002	DSN APRVL: G.ZAHLMAN	03-19-2002	MFG APRVL: --	--	QA APRVL: J.BRODEUR	03-19-2002		MKT APRVL: R.ROBICHEAU	03-19-2002		PROJ FAM: --		DRAWING NO	PROJECT #: --	SIZE	SD214515-01	DOCUMENT TYPE: SALES	D	SHEET 2 OF 3	REL LEVEL: Released		
DRAWN BY: P.LAPONIUS	02-11-2002																													
CHECKER: G.ZAHLMAN	03-19-2002																													
DSN APRVL: G.ZAHLMAN	03-19-2002																													
MFG APRVL: --	--																													
QA APRVL: J.BRODEUR	03-19-2002																													
MKT APRVL: R.ROBICHEAU	03-19-2002																													
PROJ FAM: --		DRAWING NO																												
PROJECT #: --	SIZE	SD214515-01																												
DOCUMENT TYPE: SALES	D	SHEET 2 OF 3																												
REL LEVEL: Released																														
		REV	T																											

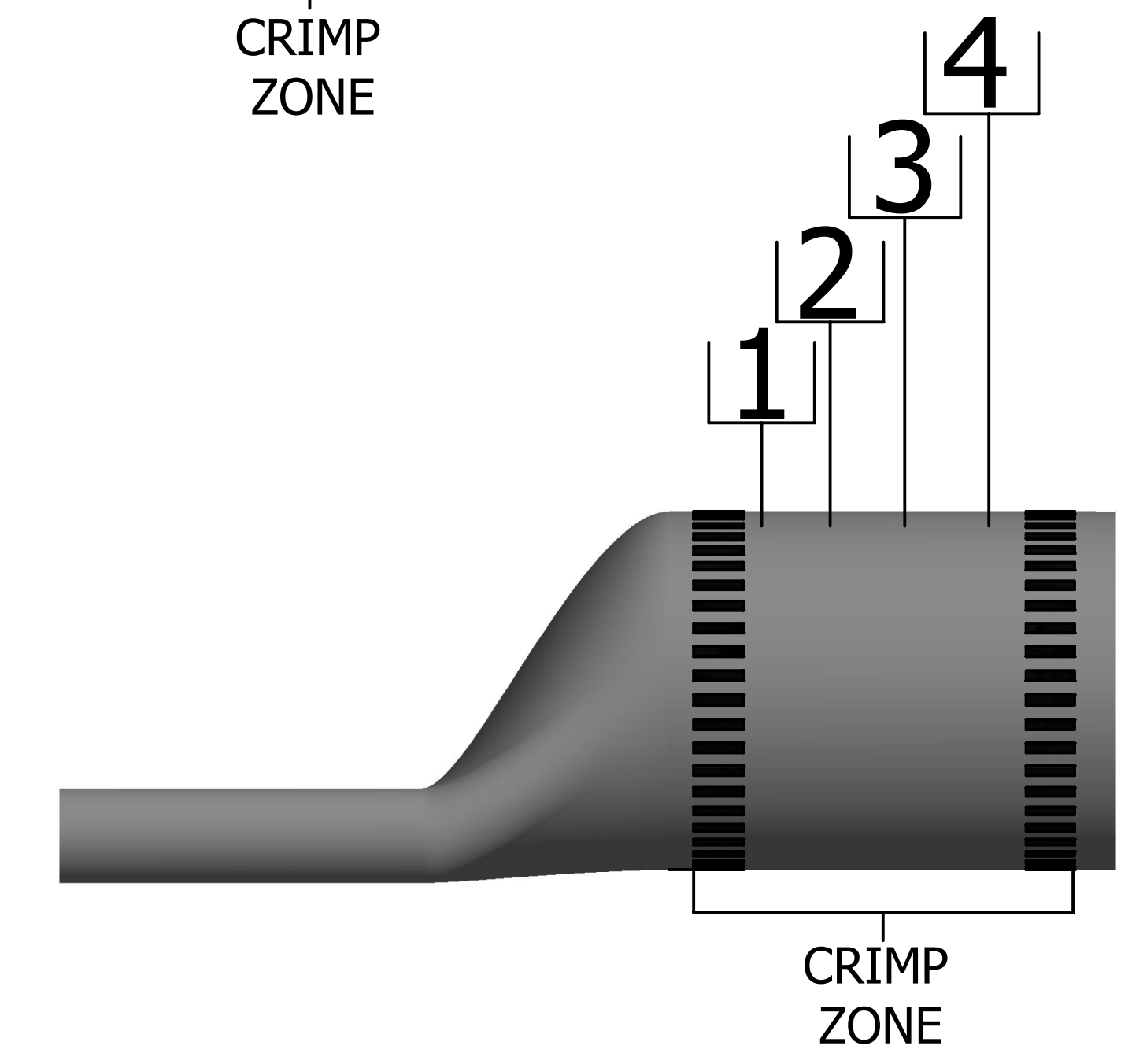
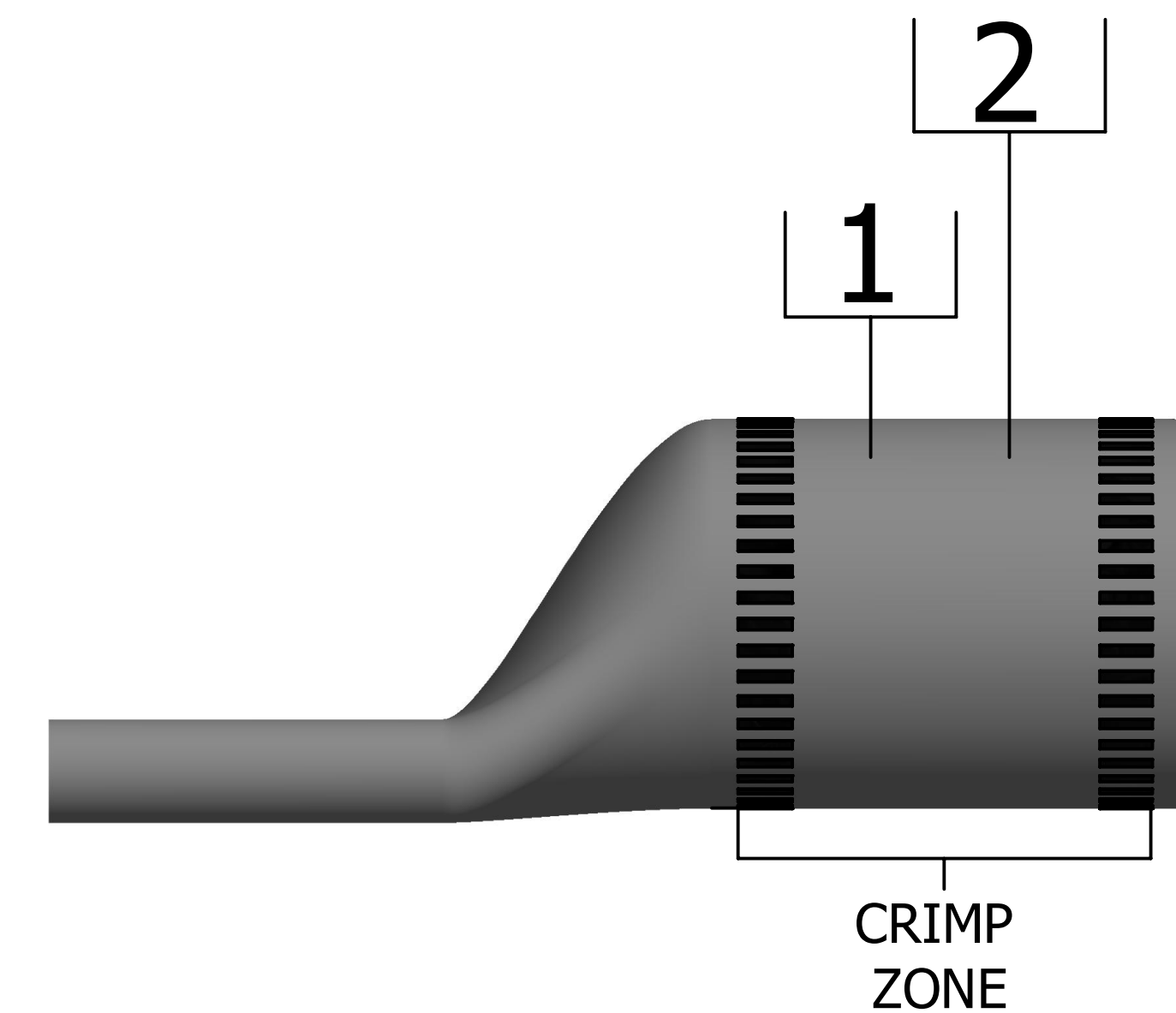
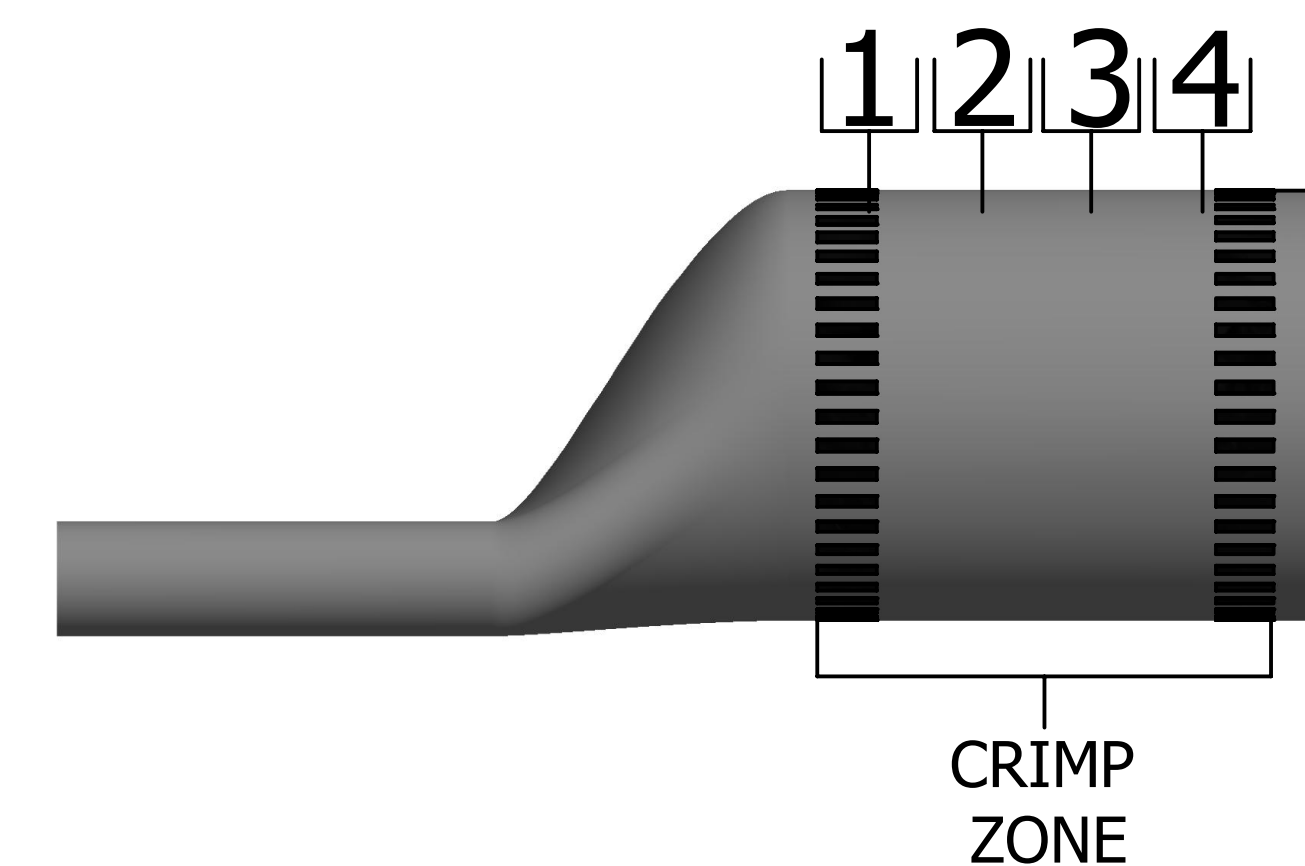
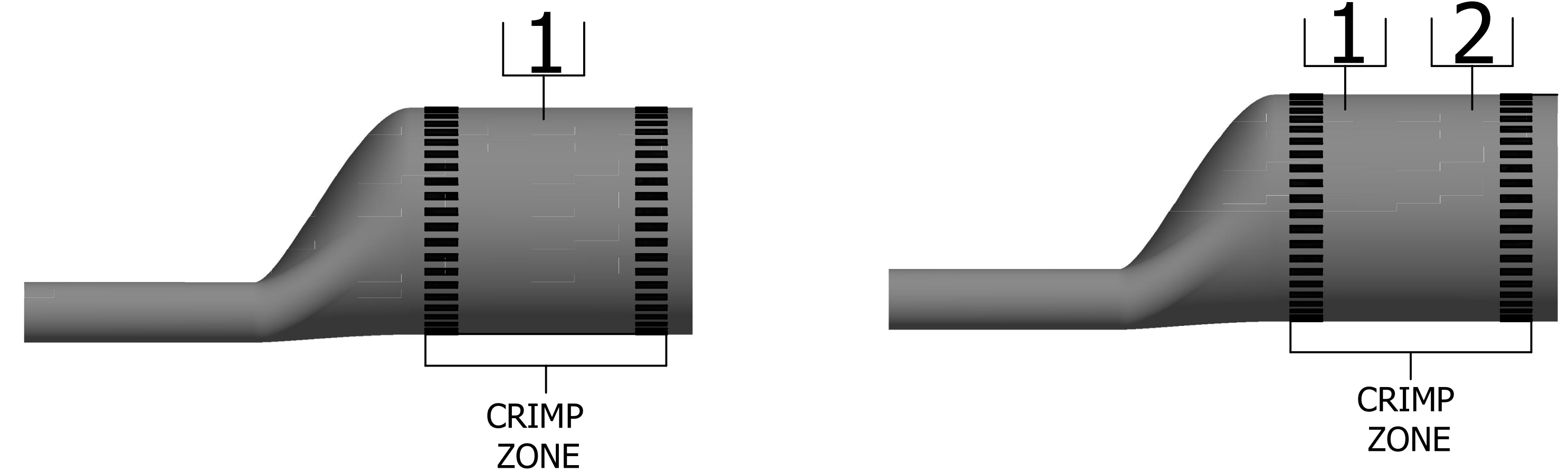
Installation Instructions:

Installation instructions help the installer understand proper wire preparation, proper insertion requirements, crimp zone location, individual crimp location, crimp order and crimp direction, to ensure safe and reliable wire connections. In order to obtain a UL Listing BURNDY certifies its products using the BURNDY Engineered System and select other crimp tool manufacturers in accordance with one or more UL categories.

Aluminum Installation Steps:

- Select the appropriate connector based on:
 - Wire Material
 - Wire Construction
 - Wire Size
- Strip the insulation to the appropriate wire strip length, based on the table's Wire Strip Length recommendation for the selected connector. Due to tolerances in the connector, wire strip length, and insulation stripping tools, this range may be 0" - 1/4". The exposed wire, also known as a "shiner", has no performance impact on the connection and there is no wire exposure requirement by BURNDY.
- Wire brush the bare conductor to remove any oxides. DO NOT wire brush tin-plated connectors.
- Apply PENETROX™ A13 oxide inhibitor to the bare conductor.
- Insert the conductor into the barrel for the full length. The connector barrel is filled with PENETROX™ A13, so be aware of the following:
 - Oxide inhibitor may discharge from the barrel when wire is fully inserted.
 - Oxide inhibitor may cause resistance that could feel like the wire is fully inserted. Ensure you insert the wire with enough force to penetrate the oxide inhibitor barrier until you reach the full wire insertion distance.
- Apply the proper number of crimps based on the installation tooling requirements. Use the illustrations as a guide on crimp placement and direction for the proper number of crimps. Some catalog numbers required overlapping crimps. Please refer to the overlapping crimp image that is applicable based on the number of crimps required. Overlap each crimp so that the completed installation of all overlapping crimps covers the entire crimp zone.
- Remove excess PENETROX™ A13 that may discharge during installation.

REV	DATE	DESCRIPTION	ECO	BY	CH'K.
T	08/03/2021	RECREATED IN INVENTOR	210803010788	SS	WP



2 OVERLAPPING CRIMPS

4 OVERLAPPING CRIMPS

TO ORDER BURNDY® PRODUCTS CALL		HYLUG™	
UNITED STATES 1-800-346-4175 (LONDONDERRY, NH)		ITEM NO: SEE TABLE	
CANADA: 1-800-361-6975 (QUEBEC) 1-800-387-6487 (ALL OTHER PROVINCES)		CAT. NO: SEE TABLE	
FOR PRODUCT INFO: http://www.burndy.com		DRAWN BY: P.LAPONIUS 02-11-2002 CHECKER: G.ZAHLMAN 03-19-2002 DSN APRVL: G.ZAHLMAN 03-19-2002 MFG APRVL: -- QA APRVL: J.BRODEUR 03-19-2002 MKT APRVL: R.ROBICHEAU 03-19-2002	
PROJECT #: --	SIZE: D	DRAWING NO: SD214515-01	
DOCUMENT TYPE: SALES	REL LEVEL: Released	SHEET 3 OF 3	