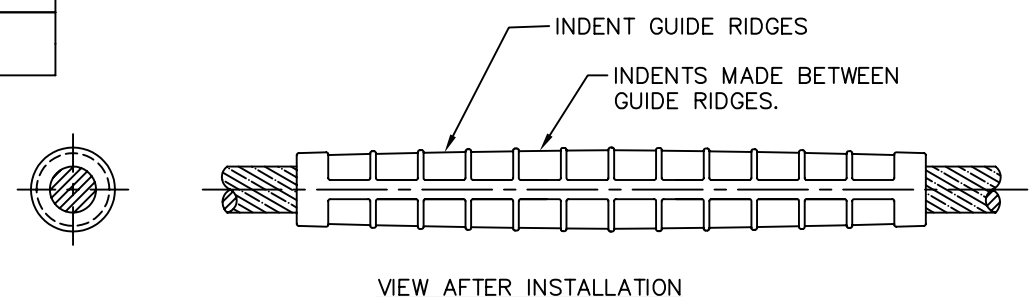
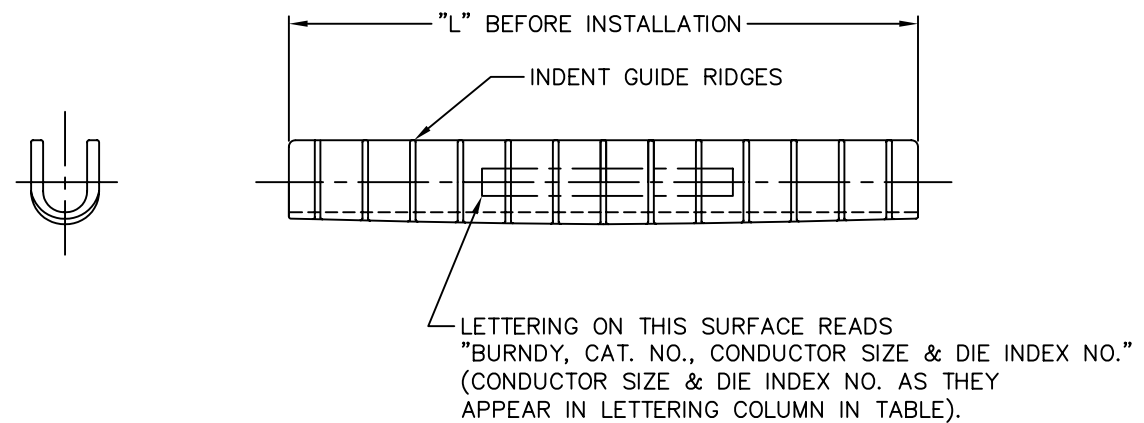


CATALOG NO.	CONDUCTOR		"L"	LETTERING	INSTALLATION DATA						REV.	DATE	DESCRIPTION	ECO	BY	C'K'D.	
	ACSR & AAC	STR.			DIE INDEX NO.	MD6		HYPRESS™ & DIE SET		PENETROX™							
					DIE SET	CRIMPS	Y34A	Y35	CRIMPS	PTS/100'							
YCU4R	#4 (.290)	6-1	6.25	#4 A.C.S.R. 6-1 7-1, #4 AAC, 7 USE DIE INDEX #237	237	W-237	12	A-237	U-237	6	2.0	B	4/14/09	ADDED CAT. # YCU4RG1 TO TABLE	17833	PL	PL
	#4 (.257)	7-1															
	#4 (.232)	7															
YCU2R	#2 (.316)	6-1	8.25	#2 A.C.S.R. 6-1 7-1 USE DIE INDEX #239	239	W-239	16	A-239	U-239	8	3.0						
	#2 (.325)	7-1															
YCU1R	#1 (.355)	6-1	8.75	#1 A.C.S.R. 6-1 8-1 USE DIE INDEX #241	693	W-693	20	--	U-693	10	3.5						
	80 kcmil (.367)	8-1															
YCU25R	1/0 (.398)	6-1	8.75	1/0 A.C.S.R. 6-1 USE DIE INDEX BG 243	BG	FIXED	30	8	--	--	--	8	3.5				
						W-BG	30	--	U-BG	30							
YCU26R	2/0 (.447)	6-1	10.06	2/0 A.C.S.R. 6-1 USE DIE INDEX 245 247	245	W-245	24	A-245	U-245	12	4.5						
YCU27R	3/0 (.502)	6-1	10.06	3/0 A.C.S.R. 6-1 USE DIE INDEX #247	247	W-247	24	A-247	U-247	12	5.0						
110.8 kcmil	12-7																
694	W-694	24															
YCU251RG1	101.8 kcmil	12-7	10.06	101.8 kcmil A.C.S.R. 12-7 USE DIE INDEX #247	247	W-247	24	A-247	U-247	12	5.0						
YCU261RG1	134.6 kcmil	12-7	11.82	134.6 kcmil A.C.S.R. 12-7 USE DIE INDEX #249	249	W-249	28	A-249	U-249	14	6.5						
YCU28R	4/0 (.563)	6-1	11.82	4/0 6-1, 159 kcmil 12-7 A.C.S.R. USE DIE INDEX #249	249	W-249	28	A-249	U-249	14	6.5						
	159 kcmil	12-7															
YCU30R	190.8 kcmil	12-7	11.56	190.8 12-7, 266.8 6-7, 26-7 & 18-7 A.C.S.R. USE DIE INDEX #251	251	--	-	A-251	U-251	20	7.5						
	266.8 kcmil	6-7															
	266.8 kcmil	18-1															
	266.8 kcmil	26-7															
YCU321R	336.4 kcmil	18-1	11.56	336.4 kcmil 18-1 A.C.S.R.-350 kcmil 19 STR ALUM., USE DIE INDEX #547	547	--	--	A-547	U-547	20	7.5						
					655	--	--	--	U-655								
YCU4RG1	#4 (.290)	6-1	8.44	#4 ACSR 6-1, 7-1 USE DIE INDEX #239	239	W-239	16	A-239	U-239	8	3.0						
	#4 (.257)	7-1															

REV.	DATE	DESCRIPTION	ECO	BY	C'K'D.
B	4/14/09	ADDED CAT. # YCU4RG1 TO TABLE	17833	PL	PL



INSTALLATION NOTES:

5. SMEAR PENETROX™ "A" OR EQUIVALENT ON THE CONTACT GROOVES AND ON THE CONDUCTOR STRANDS. SCRATCH BRUSHING AFTER APPLYING THE COMPOUND IS RECOMMENDED. PENETROX™ "A" MAY BE PURCHASED FROM FCI USA INC.. PENETROX™ "A" IS NOT INCLUDED IN CATALOG NO.
 6. CLOSING AND PARTIAL ROUNDING OF THE LEGS OF THE "U" SHAPE BY STRIKING WITH A Mallet, HAMMER OR LINEMAN'S PLIERS IS REQUIRED TO FACILITATE INSERTION OF THE REPAIR SLEEVE IN THE Y34A HYPRESS™
 7. INDENTS TO START AT ONE END OF THE SLEEVE AND WORK TOWARDS THE OTHER.
- 8 TWO CRIMPS MADE SIMULTANEOUSLY.

BEFORE INSTALLATION NOTES:

1. MATERIAL: CAST ALUMINUM
2. REFERENCE: SD21894 - YOU-R
3. THIS SLEEVE MADE FROM ALUMINUM SHEET METAL.
- 4 FOR REPAIR SLEEVES DESIGNED FOR INSTALLATION WITH THE SAME DIES USED TO INSTALL HYSPLICES™ ON THESE CONDUCTORS, REFER TO DRAWING NO. SD21894 WHICH LISTS THE YCU--R TYPE.

TO ORDER BURNDY® PRODUCTS CALL		REPAIR SLEEVE (A.C.S.R.)	
UNITED STATES:		ITEM NO: N/A	
1-800-346-4175 (LONDONDERRY, NH)		CAT NO: YCU-R- (TABLE)	
CANADA:		SCALE: N/A	
1-800-361-6975 (QUEBEC)		DRAWN BY: R. BOISVERT 09/22/08	
1-800-387-6487 (ALL OTHER PROVINCES)		CHECKER: P. WASON 09/23/08	
FOR PRODUCT INFO: http://www.burndy.com		DSN APPVL: P. WASON 09/18/08	
		MFG APPVL: -- --	
		QC APPVL: -- --	
		MKT APPVL: -- --	
		PROD FAM: -- --	
		PROJECT #: -- --	
		DOCUMENT TYPE: Sales	
		REL LEVEL: AutoCAD	
		DRAWING NO	
		SD22443-01	
		REV	
		B	
		SHEET 1 OF 1	