

ALUMINUM SLEEVE

STEEL SLEEVE

REV.	DATE	DESCRIPTION	ECO	BY	C'K'D.
A	06/28/11	REDRAWN TO AUTOCAD AND UPDATE TABLE PER M/J.	24365	RB	JH

CONDUCTOR		CATALOG NO. OF ASSEMBLY	FIG. NO.	ALUMINUM SLEEVE INSTALLATION DATA								STEEL SLEEVE INSTALLATION DATA											
ACSR				'A' O.D.	L	EE1 DIE NO.	BURNDY INSTALLATION TOOLS WITH DIES AND NO. OF CRIMPS EACH END				B	LL	EE1 DIE NO.	BURNDY INSTALLATION TOOLS WITH DIES OF CRIMPS EACH END									
SIZE	STR.						TOOL INDEX NO.	MD6 HYTOOL™	Y35 HYPRESS™	Y60 BHU				TOOL INDEX NO.	MD6 HYTOOL™	Y35 HYPRESS™	Y60BHU						
#2 (.316)	6-1	YDS2RE	1	.52	17.05	6A	693	W-6AE	20	U6AET	5			1.98	4.12	15	690	W-15E	8	U1SET	4		
#2 (.325)	7-1	YDS021RE	1	.52	17.05	6A	693	W-6AE	20	U6AET	5			2.21	4.76	25	691	W-25E	9	U2SET	3		
1/0 (.398)	6-1	YDS25RE	1	.62	17.05	8A	248	W-243	10	U25RYFT	5			2.21	4.76	25	691	W-25E	9	U2SET	3		
2/0 (.447)	6-1	YDS26R	1	.70	19.73	9A	245	W-245	12	U26RYFT	6			2.41	5.22	45	692	W-45E	12	U4SET	6		
3/0 (.502)	6-1	YDS27R	1	.78	16.75	10A	694	W-10AE	12	U10AET	6			2.50	5.25	55	246	W-248	8	U28RSYFT	8		
4/0 (.563)	6-1	YDS28RE	1	.88	18.81	11A	249	W-249	14	U28RYFT	7			2.47	5.25	55	248	W-248	8	U28RSYFT	8		
336.4 kcmil (.684)	18-1	YDS321RE	1	1.11	17.79	13A	655	-	-	U321RLYRT	9			2.21	4.76	25	691	W-25E	9	U2SET	3		
477 kcmil (.814)	18-1	YDS361R	1	1.30	25.41	14A	327	-	-	U361RYFT	16			2.50	5.25	55	246	W-5SE	8	U28RSYFT	8		
1113 kcmil (1.259)	45/7	YDS49R49RS	1	2.125	37	-	422	-	-	-	-	L422	8	4.95	10	-	419	-	-	-	-	L419	7

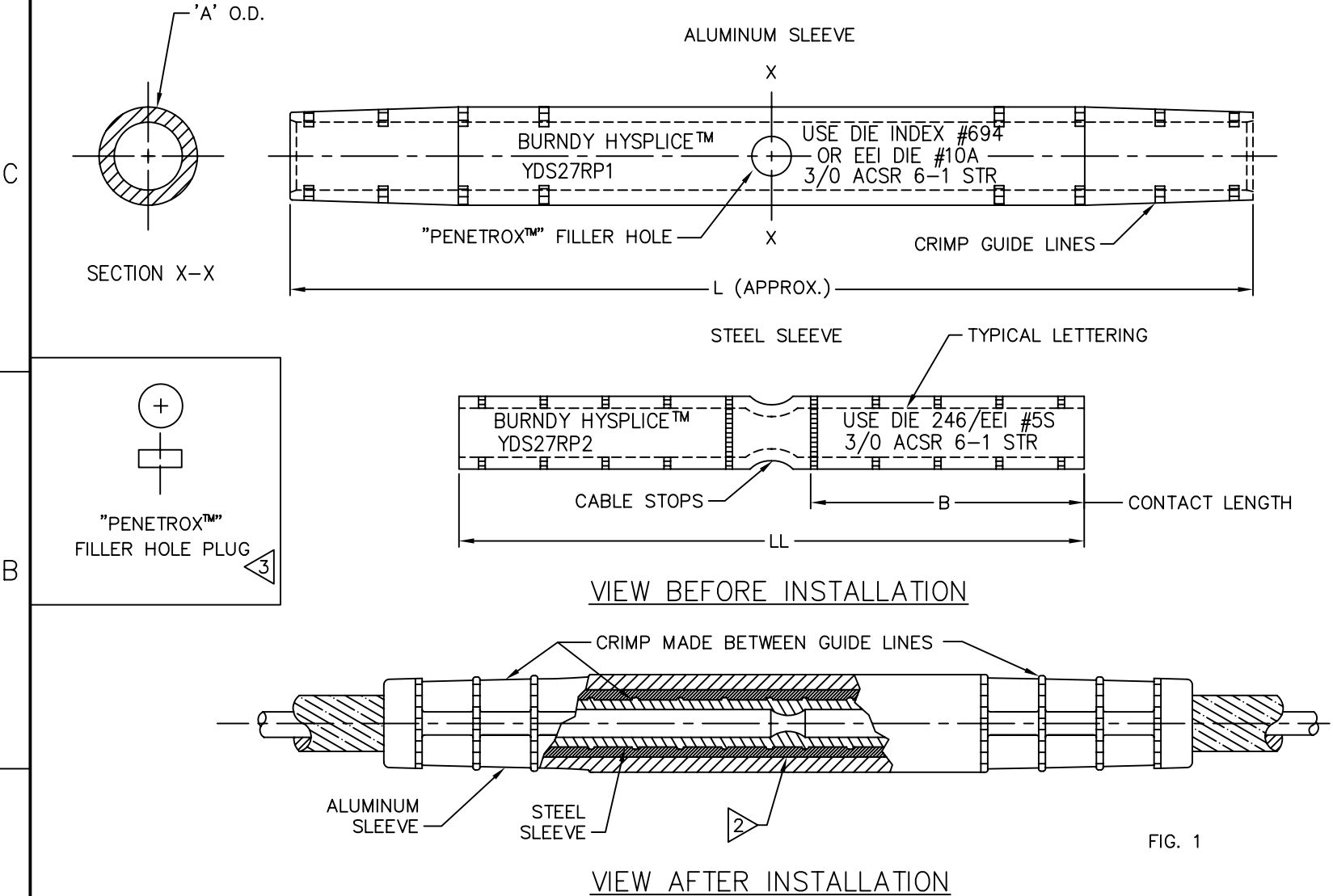
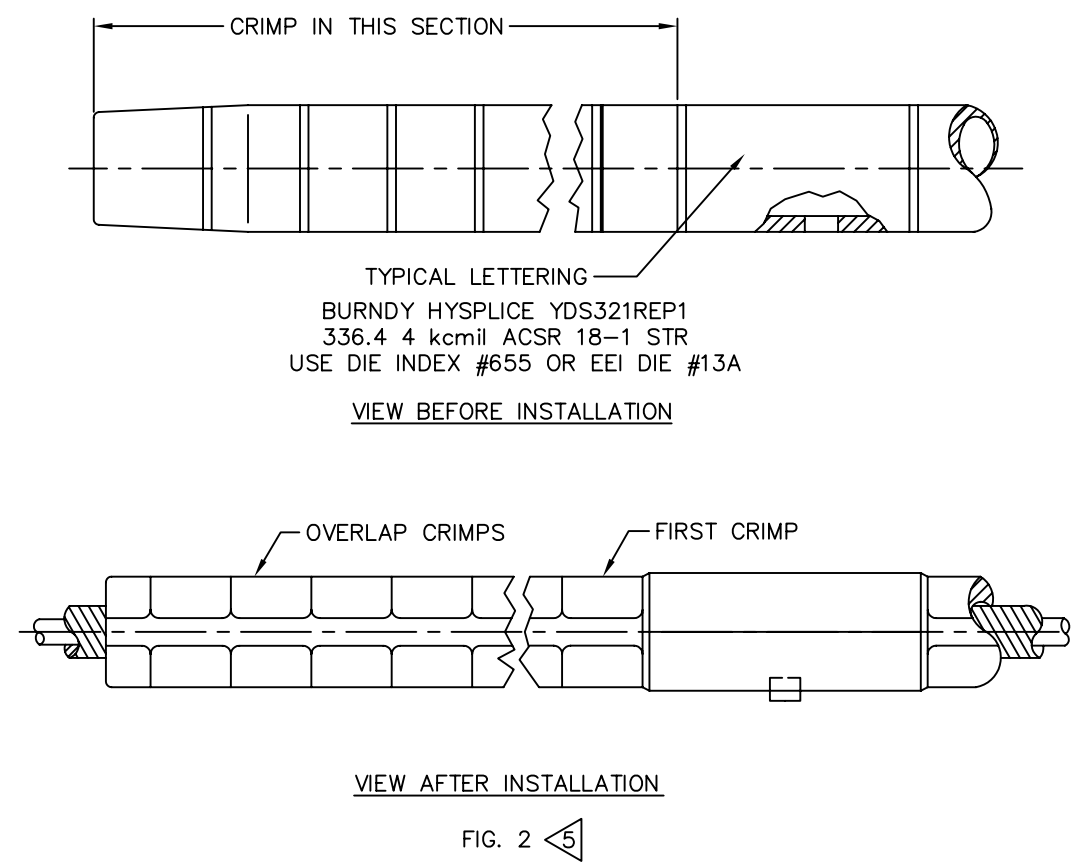


FIG. 1



REFERENCES: SD17980, FD51703

- NOTES:
- 1 THESE AL. SLEEVES HAVE NO PENETROX™ FILLER HOLE OR FILLER PLUG, BUT PENETROX™A IS USED.
  - 2 BURNDY® PENETROX™A (NOT INCLUDED IN CAT. NO.) MAY BE PURCHASED FROM BURNDY®.
  - 3 10% EXTRA PLUGS WILL BE FURNISHED WITH ALL ORDERS.
  - 4 RECOMMENDED NO. OF CRIMPS LISTED IN TABLE FOR BURNDY® TOOLING.
  - 5 WHEN USING OTHER MANUFACTURERS TOOLING, CRIMPS MAY OVERLAP OR BE SPACED 1/16" (MAX) APART. (FIG. 2).
  6. MATERIAL: AS SPECIFIED.

TO ORDER BURNDY® PRODUCTS CALL

UNITED STATES:  
1-800-346-4175 (LONDONDERRY, NH)

CANADA:  
1-800-361-6975 (QUEBEC)  
1-800-387-6487 (ALL OTHER PROVINCES)

FOR PRODUCT INFO: <http://www.burndy.com>

HYSPLICE™ (ACSR) EE1	
ITEM NO: ---	
CAT NO: YDS-RE, YDS-R (SEE TABLE)	
SCALE: NTS	
DRAWN BY: R. BOISVERT	06/28/11
CHECKER: J. HALL	06/28/11
DSN APPVL: W. ZAHLMAN	05/05/11
MFG APPVL: ---	---
QC APPVL: C. ACKERMAN	05/06/11
MKT APPVL: J. HALL	05/05/11
PROD FAM: ---	
PROJECT #: ---	SIZE
DOCUMENT TYPE: Sales	D
REL LEVEL: AutoCAD	

DRAWING NO: SD51698-01

REV: A

SHEET 1 OF 1