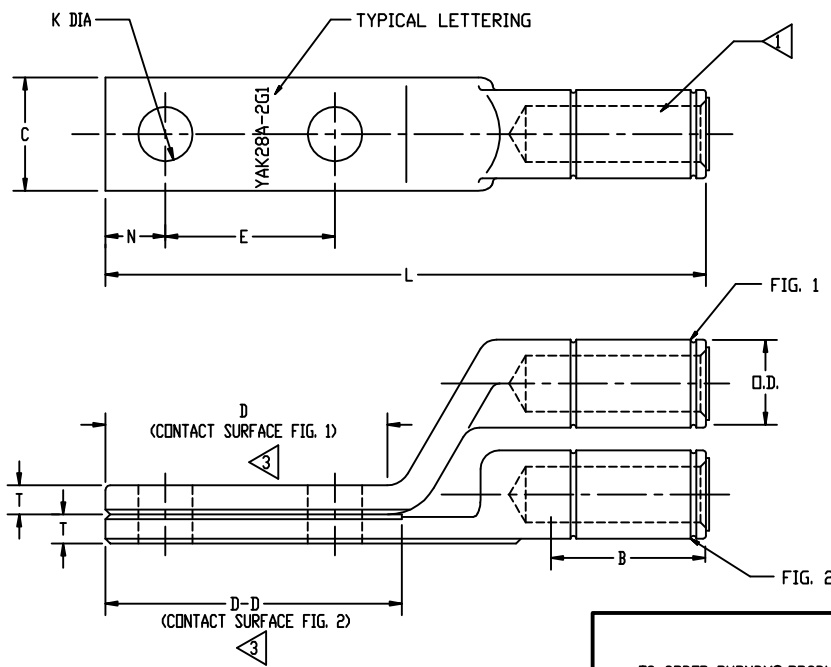


DRAWING NO.  
**SD59493**

CATALOG NUMBER	ALUM. CONDUCTOR SIZE	FIG. NO.	B	C	D	D-D	E	K	L	N	T	O.D.	DIE INDEX	BURNDY INSTALLATION TOOLING (# CRIMPS)							DIELESS (# CRIMPS)	WIRE STRIP LENGTH
														MECHANICAL		HYDRAULIC						
														MD6	OUR840	Y750,	Y35, Y39, BAT35, BAT750	Y45	Y46	Y48B		
YAK28A-2G1 YAK28A-2G2	4/0 STR. (.528 DIA.)	1 2	1.52 [39]	1.17 [30]	3.06 [78]	3.25 [83]	1.75 [44]	.56 [14]	6.20 [157]	.62 [16]	.30 [8]	.91 [23]	249 K840	W249 (4) W-K840 (6)	X249 (4)	U249 (2) UK840T (3)	U249 (2) UK840T (3)	U249 (2) UK840T (3)	C249 (1)	Y644M (1) BAT644M (1)	1 3/4"	
YAK29A-2G1 YAK29A-2G2	250 kcmil (.575 DIA.)	1 2	1.91 [49]	1.62 [41]	3.06 [78]	3.25 [83]	1.75 [44]	.56 [14]	6.84 [174]	.62 [16]	.38 [10]	1.11 [28]	299 705	---	---	U31ART (3) U705 (3)	U31ART (3) U705 (3)	U31ART (3) U705 (3)	C31AR (1)	Y644M (1) BAT644M (1)	2"	
YAK30A-2G1 YAK30A-2G2	300 kcmil (.629 DIA.)	1 2	1.91 [49]	1.62 [41]	3.06 [78]	3.25 [83]	1.75 [44]	.56 [14]	6.84 [174]	.62 [16]	.38 [10]	1.11 [28]	299 705	---	---	U31ART (3) U705 (3)	U31ART (3) U705 (3)	U31ART (3) U705 (3)	C31AR (1)	Y644M (1) BAT644M (1)	2"	
YAK31A-2G1 YAK31A-2G2	350 kcmil (.681 DIA.)	1 2	1.91 [49]	1.62 [41]	3.06 [78]	3.25 [83]	1.75 [44]	.56 [14]	6.84 [174]	.62 [16]	.38 [10]	1.11 [28]	299 705	---	---	U31ART (3) U705 (3)	U31ART (3) U705 (3)	U31ART (3) U705 (3)	C31AR (1)	Y644M (1) BAT644M (1)	2"	
YAK311A-2G1 YAK311A-2G2	397.5 kcmil (.724 DIA.)	1 2	2.41 [61]	1.62 [41]	3.06 [78]	3.25 [83]	1.75 [44]	.56 [14]	7.75 [197]	.62 [16]	.44 [11]	1.25 [32]	317 705	---	---	U317 (4) U705 (2)	U317 (4) U705 (2)	U317 (4) U705 (2)	C317 (2)	Y644M (1) BAT644M (1)	2 1/2"	
YAK34A-2G1 YAK34A-2G2	500 kcmil AL. (.813 DIA.) 500 kcmil AL. (.736 DIA.) (COMPRESSED)	1 2	2.41 [61]	1.62 [41]	3.06 [78]	3.25 [83]	1.75 [44]	.56 [14]	7.75 [197]	.62 [16]	.44 [11]	1.25 [32]	317 705	---	---	U317 (4) U705 (2)	U317 (4) U705 (2)	U317 (4) U705 (2)	C317 (2)	Y644M (1) BAT644M (1)	2 1/2"	
YAK361A-2G1 YAK361A-2G2	600 kcmil (.893 DIA.) 636 kcmil (.918 DIA.)	1 2	2.65 [67]	1.62 [41]	3.06 [78]	3.25 [83]	1.75 [44]	.56 [14]	8.22 [209]	.62 [16]	.62 [16]	1.50 [38]	508 788	---	---	U608 (3)	U608 (3) S722 (3)	U608 (3) P786 (3)	C608 (1)	Y644M (1) BAT644M (1)	2 11/16"	
YAK39A-2G1 YAK39A-2G2	700 kcmil (.964 DIA.) 750 kcmil (.998 DIA.)	1 2	2.65 [67]	1.62 [41]	3.06 [78]	3.25 [83]	1.75 [44]	.56 [14]	8.22 [209]	.62 [16]	.62 [16]	1.50 [38]	508 788	---	---	U608 (3)	U608 (3) S722 (3)	U608 (3) P786 (3)	C608 (1)	Y644M (1) BAT644M (1)	2 3/4"	



- NOTES:
- FIG. 1 & FIG. 2 BARRELS PARTIALLY FILLED WITH PENETROX™ & SEALED.
  - OVERLAP CRIMPS.
  - SCRATCH BRUSH CONTACT SURFACES OF TONGUE AND APPLY PENETROX™ PRIOR TO INSTALLATION.
  - CATALOG #PT6515 ADAPTER IS REQUIRED TO USE 'U' DIES IN Y45 SERIES TOOLS.
  - CATALOG #PUADP-1 ADAPTOR IS REQUIRED TO USE 'U' DIES IN Y46 SERIES TOOLS.
  - ACCOMMODATES 4/0 STR., AL. OR CU.
  - DIMENSIONS IN BRACKETS [ ] ARE IN MILLIMETERS ROUNDED OFF TO THE NEAREST MILLIMETER, UNLESS OTHERWISE NOTED, AND ARE FOR REFERENCE ONLY.
  - MATERIAL: CAST ALUMINUM.
  - FOR TIN PLATED FINISH ADD SUFFIX '-TN'

TO ORDER BURNDY® PRODUCTS CALL		STACKING HYLUG™ (ALUMINUM)	
UNITED STATES: 1-800-346-4175 (LONDONDERRY, NH)		ITEM NO: --	
CANADA: 1-800-361-6975 (QUEBEC) 1-800-387-6487 (ALL OTHER PROVINCES)		CAT NO: YAK-A-2G- (TABLE)	
FOR PRODUCT INFO: <a href="http://www.burndy.com">http://www.burndy.com</a>		SCALE: N/A	
REV. DATE DESCRIPTION ECO BY C'K'D.	DATE	DESCRIPTION	ECO BY C'K'D.
A 12/18/17 UPDATED AS PER MARKUP 48226 YR VS			
DRAWING NO SD59493		REV A	
SHEET 1 OF 2		SIZE D	
REL LEVEL: Released		MFG APPV: A. LLOYD 9/17/84	
DRAFTER: M.M.		CHECKER: M.M.	
DESIGNER: M.M.		DATE: 8/26/83	
PROJECT #		DATE: 9/1/83	
DOCUMENT TYPE		MFG APPV: --	

REV.	DATE	DESCRIPTION	ECO	BY	C'K'D.
A	12/18/17	UPDATED AS PER MARKUP	48226	YR	VS