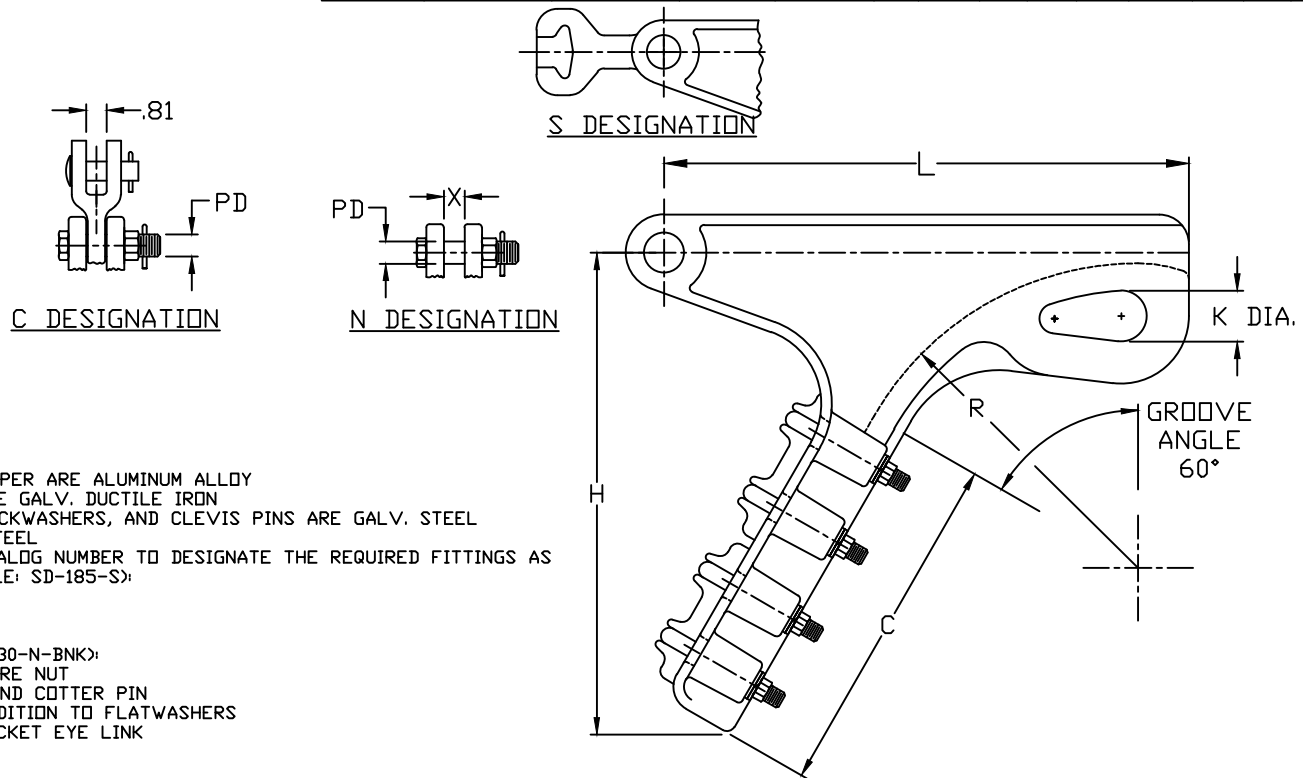


CAT. NUMBER	CLAMP RANGE			ULT. STR. (LBS)	U-BOLTS		DIMENSIONS IN INCHES							WT (LBS)
	ACSR	ALUMINUM	INCHES		NO.	SIZE	L	H	C	K	PD	R	X	
SD-57-N	#4 6/1	#4 7 STR	0.20-0.64	15,000	3	0.50	9.06	6.75	5.12	1.25	0.62	3.38	0.75	3.2
SD-57-S	TD	TD												4.4
SD-57-C	266.8 26/7	300 7 STR												4.8
SD-70-N	#2 7/1	#1 7 STR	0.30-0.75	20,000	4	0.50	10.25	8.38	6.50	1.25	0.62	4.25	0.94	4.7
SD-70-S	TD	TD												6.0
SD-70-C	397.5 18/1	397.5 37 STR												6.4
SD-86-N	3/0 6/1	3/0 19 STR	0.46-0.94	25,000	4	0.50	11.25	9.62	7.38	1.25	0.62	5.00	1.06	5.4
SD-86-S	TD	TD												6.8
SD-86-C	556 26/7	650 61 STR												7.1
SD-112-N	3/0 6/1	4/0 19 STR	0.50-1.20	30,000	5	0.50	13.12	11.50	8.25	1.38	0.75	6.50	1.38	8.4
SD-112-S	TD	TD												9.9
SD-112-C	954 54/7	1033.5 61 STR												10.4
SD-130-N	336.4 26/7	397.5 19 STR	0.70-1.42	35,000	5	0.62	14.00	13.12	9.50	1.50	0.75	7.50	1.44	13.2
SD-130-S	TD	TD												15.3
SD-130-C	1272 54/19	1510.5 61 STR												15.5
SD-155-N	1033.5 36/1	1100 91 STR	1.18-1.55	35,000	5	0.62	15.50	15.75	12.38	1.50	0.75	6.50	2.00	15.5
SD-155-S	TD	TD												17.3
SD-155-C	1590 54/19	1800 127 STR												17.3
SD-185-N	1192.5 45/7	1272 61 STR	1.30-1.85	50,000	5	0.62	17.00	18.00	12.38	1.50	1.00	12.00	1.88	21.0
SD-185-S	TD	TD												22.7
SD-185-C	2156 84/19	2500 127 STR												22.3



- NOTES:
- MATERIAL: CLAMP BODY AND KEEPER ARE ALUMINUM ALLOY
 SOCKET AND CLEVIS BODIES ARE GALV. DUCTILE IRON
 BOLTS, NUTS, FLATWASHERS, LOCKWASHERS, AND CLEVIS PINS ARE GALV. STEEL
 COTTER PINS ARE STAINLESS STEEL
 - A SUFFIX IS ADDED TO THE CATALOG NUMBER TO DESIGNATE THE REQUIRED FITTINGS AS SHOWN IN THE TABULATION (EXAMPLE: SD-185-S):
 S - SOCKET
 C - CLEVIS
 N - NO FITTING
 - OTHER SUFFIXES (EXAMPLE: SD-130-N-BNK):
 CRF - INCLUDES ACORN OR SPHERE NUT
 BNK - INCLUDES A BOLT, NUT, AND COTTER PIN
 LW - ADDS LOCKWASHERS IN ADDITION TO FLATWASHERS
 HSE - INCLUDES A HOT LINE SOCKET EYE LINK

32419	8/21/09	MTF	MTF
EC #	DATE	CHG BY	RESP ENG
DESC OF DWG: CORRECTED CABLE RANGE ON SD185, REMOVED SD130DP1 AND DP2			
REFORMATTED NOTES			
NEW BORDER			
--			
REASON (S) FOR CHANGE: --			
DISPOSITION OF MAT'L: --			

HPS*

CONFIDENTIAL: THIS DRAWING AND ITS CONTENTS ARE CONFIDENTIAL AND THE EXCLUSIVE PROPERTY OF HUBBELL POWER SYSTEMS. NO PUBLICATION, DISTRIBUTION OR COPIES MAY BE MADE WITHOUT THE WRITTEN CONSENT OF HUBBELL POWER SYSTEMS. HUBBELL POWER SYSTEMS UNPUBLISHED. ALL RIGHTS RESERVED UNDER THE COPYRIGHT LAWS.

HUBBELL POWER SYSTEMS

TITLE: **DEADEND BOLTED STRAIN CLAMP**

SIZE	DWG NO.	CAT / PART / ASSY NO.	REV
B	CUT SHEET	SEE TABLE	28
DO NOT SCALE THIS DRAWING	DRN BY WPG	DATE 4/28/99	SHEET 1 OF 1