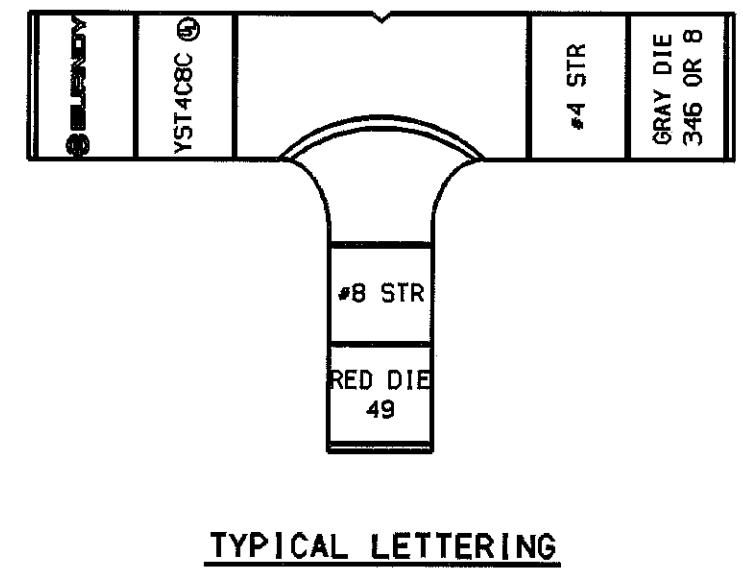
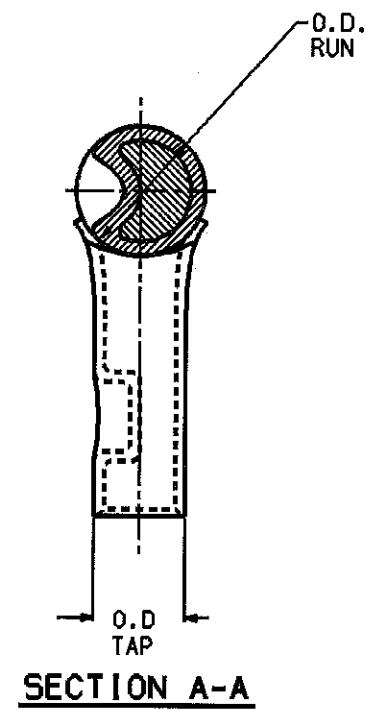
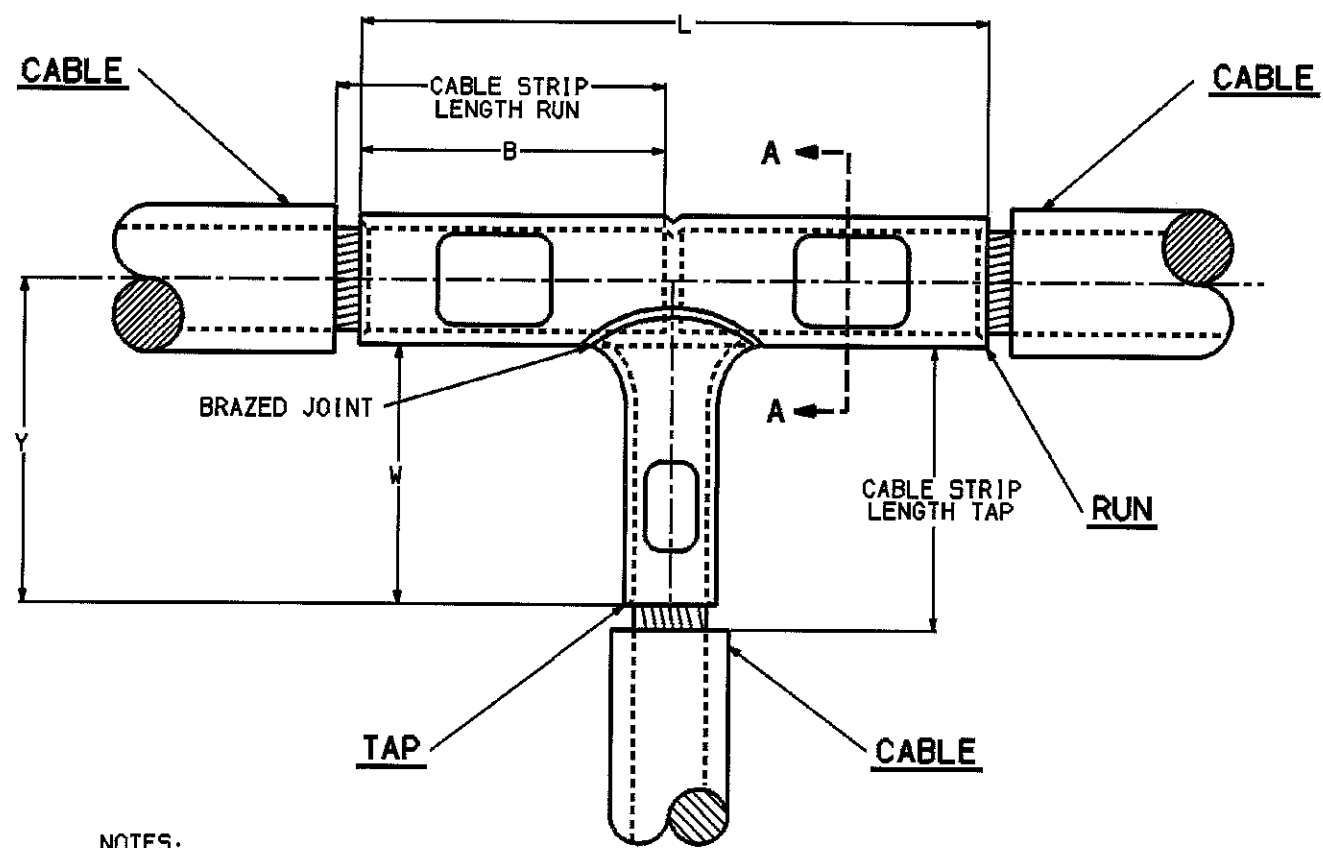


SE23886

ACCOMMODATES		CATALOG NUMBER	DIMENSIONS						CABLE STRIP LENGTH		INSTALLATION TOOLING						REV.	DATE	DESCRIPTION	BY	C.K'D.	
RUN	TAP		B		L		W MIN		Y	O.D.		DIELESS TOOLS RUN & TAP		RUN		TAP						
			(mm)	(mm)	(mm)	(mm)	(mm)	(mm)		MECHANICAL HYTOOL (CRIMPS)	HYDRAULIC HYPRESS	DIE INDEX	COLOR CODE	DIE NUMBER (# OF CRIMPS)	DIE INDEX	COLOR CODE						DIE NUMBER (# OF CRIMPS)
#4 STR. (.232 DIA.) [5.9 DIA.]	#8 STR. (.146 DIA.) [3.7 DIA.]	YST4C8C	1.12 [28]	3.19 [81]	1.38 [35]	X	.34 [8.6]	.26 [6.6]	1-3/16 [30]	1-7/16 [36]	HY29-3 (2) HY29-11 (2)	YS44M (1 CRIMP)	8	GRAY	U4CRT (2)	49	RED	U8CRT (2)				
#4 STR. (.232 DIA.) [5.9 DIA.]	#6 STR. (.184 DIA.) [4.7 DIA.]	YST4C6C	1.12 [28]	3.19 [81]	1.38 [35]	1.62 [41]	.34 [8.6]	.29 [7.4]	1-3/16 [30]	1-7/16 [36]	HY29-3 (2) HY29-11 (2)	YS44M (1 CRIMP)	8	GRAY	U4CRT (2)	7	BLUE	U5CRT (2)				
#4 STR. (.232 DIA.) [5.9 DIA.]	#4 STR. (.232 DIA.) [5.9 DIA.]	YST4C4C	1.12 [28]	3.25 [82]	1.38 [35]	1.62 [41]	.34 [8.6]	.34 [8.6]	1-3/16 [30]	1-7/16 [36]	HY29-3 (2) HY29-11 (2)	YS44M (1 CRIMP)	8	GRAY	U4CRT (2)	8	GRAY	U4CRT (2)				



- NOTES:
1. MATERIAL: COPPER
  2. FINISH: TIN PLATE
  3. DIMENSIONS IN BRACKETS [ ] ARE IN MILLIMETERS.
  4. THE MAXIMUM CABLE SIZE CRIMPED BY THE Y35 IS 400 Kcmil COPPER.
  5. USE ADAPTOR (CAT NO. P-UADP) WITH "U" DIES IN Y46 HYPRESS.
  6. FOR ADDITIONAL TOOLING, REFERENCE BURNDY CATALOG INSTALLATION TOOL INDEX.
  7. SHOWN INSTALLED WITH NEST AND INDENTOR.

**COUPLER TEE CONNECTOR**

DWG NO: YST4C-(TABLE)	DATE: 9/22/83	CHECKED: D FILLION	DATE: 9/29/83
DRAWN: J GAUDET	DESIGN APPR: C PALAGI	12/9/83	APPR: N/A
D.A. APPR: A LLOYD	5/12/83	APPR: D HAMILTON	4/26/83
CAD FILE: SE23886-BHT03	PRR REF: N/A	REL REF: N/A	PROJECT: C. O. 52398
		DRAWING NO: <b>SE23886</b> SHEET 3 of 21	