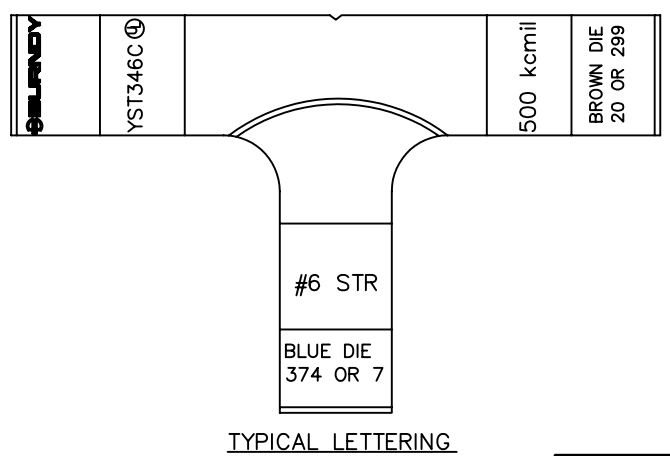
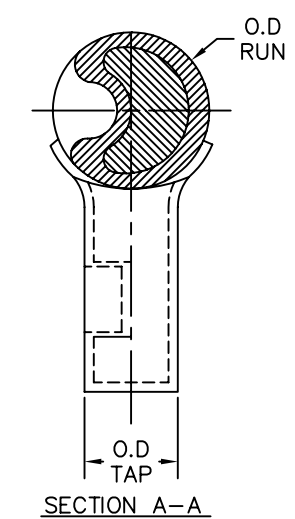
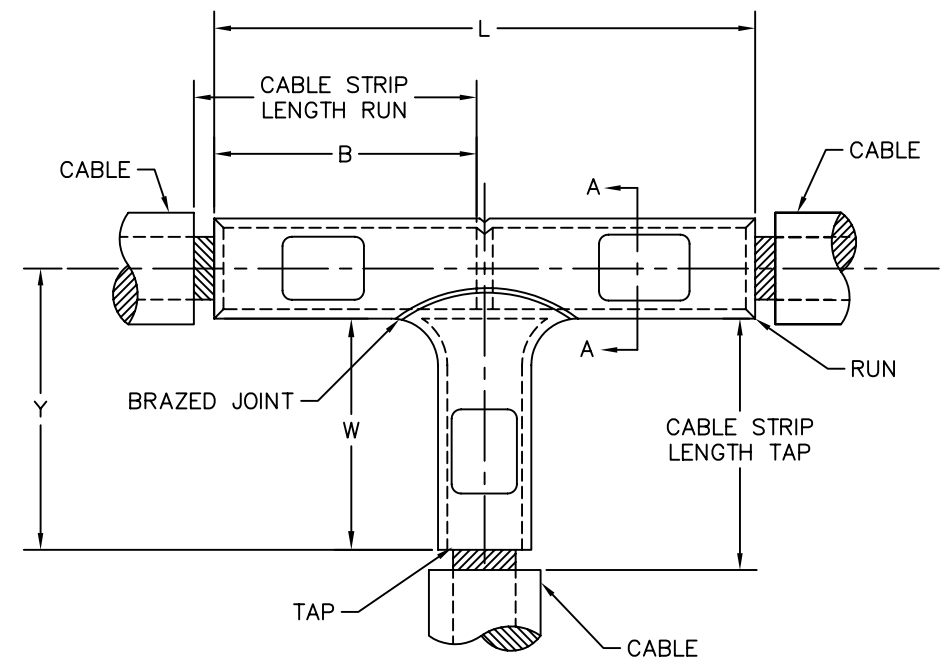


ACCOMMODATES		CATALOG NUMBER	DIMENSIONS						CABLE STRIP LENGTH		DIELESS TOOLS RUN & TAP		INSTALLATION TOOLING								
RUN	TAP		B [mm]	L [mm]	W MIN [mm]	Y MIN.	O.D RUN	O.D TAP	RUN RUN[mm]	TAP TAP[mm]	MECHANICAL HYTOOL (CRIMPS)	HYDRALIC HYPRESS	RUN Y35 <4> Y39, Y750, Y46 <5>		TAP Y35 <4> Y39, Y750, Y46 <5>		DIE INDEX	COLOR CODE	DIE NUMBER (# OF CRIMPS)	DIE INDEX	COLOR CODE
500 Kcmil (.814 DIA.) [21 DIA.]	#6 STR.(.184 DIA.) [4.7 DIA.]	YST346C	2.25 [57]	5.44 [138]	1.38 [35]	2.36 [60]	1.06 [27]	.29 [7.4]	2-5/16 [59]	1-7/16 [36]	MY29-3 (2) MY29-11 (2)	Y644M (1 CRIMP)	20	BROWN	U34RT (4)	7	BLUE	U5CRT (2)			
500 Kcmil (.814 DIA.) [21 DIA.]	#4 STR.(.232 DIA.) [5.9 DIA.]	YST344C	2.25 [57]	5.50 [140]	1.38 [35]	2.34 [59]	1.06 [27]	.34 [8.6]	2-5/16 [59]	1-7/16 [36]	MY29-3 (2) MY29-11 (2)	Y644M (1 CRIMP)	20	BROWN	U34RT (4)	8	GRAY	U4CRT (2)			
500 Kcmil (.814 DIA.) [21 DIA.]	#2 STR.(.291 DIA.) [7.4 DIA.]	YST342C	2.25 [57]	5.56 [141]	1.50 [38]	2.45 [62]	1.06 [27]	.42 [10.5]	2-5/16 [59]	1-9/16 [44]	MY29-3 (2) MY29-11 (2)	Y644M (1 CRIMP)	20	BROWN	U34RT (4)	10	BROWN	U2CRT (2)			
500 Kcmil (.814 DIA.) [21 DIA.]	#1 STR.(.330 DIA.) [8.4 DIA.]	YST341C	2.25 [57]	5.62 [143]	1.56 [40]	2.50 [64]	1.06 [27]	.46 [12]	2-5/16 [59]	1-5/8 [41]	MY29-3 (2) MY29-11 (2)	Y644M (1 CRIMP)	20	BROWN	U34RT (4)	11	GREEN	U1CRT (2)			
500 Kcmil (.814 DIA.) [21 DIA.]	1/0 STR. (.373 DIA.) [9.5 DIA.]	YST3425	2.25 [57]	5.69 [144]	1.70 [43]	2.48 [63]	1.06 [27]	.51 [13]	2-5/16 [59]	1-3/4 [44]	MY29-3 (2) MY29-11 (2)	Y644M (1 CRIMP)	20	BROWN	U34RT (4)	12	PINK	U25RT (2)			
500 Kcmil (.814 DIA.) [21 DIA.]	2/0 STR. (.419 DIA.) [10.6 DIA.]	YST3426	2.25 [57]	5.69 [144]	1.62 [41]	2.53 [64]	1.06 [27]	.56 [14]	2-5/16 [59]	1-11/16 [43]	MY29-3 (2) MY29-11 (2)	Y644M (1 CRIMP)	20	BROWN	U34RT (4)	13	BLACK	U26RT (2)			
500 Kcmil (.814 DIA.) [21 DIA.]	3/0 STR. (.470 DIA.) [12 DIA.]	YST3427	2.25 [57]	5.74 [146]	1.69 [43]	-	1.06 [27]	.62 [16]	2-5/16 [59]	1-3/4 [44]	MY29-3 (2) MY29-11 (2)	Y644M (1 CRIMP)	20	BROWN	U34RT (4)	14	ORANGE	U27RT (2)			
500 Kcmil (.814 DIA.) [21 DIA.]	4/0 STR. (.528 DIA.) [13 DIA.]	YST3428	2.25 [57]	5.81 [148]	1.75 [44]	2.58 [66]	1.06 [27]	.69 [18]	2-5/16 [59]	1-13/16 [46]	MY29-3 (2) MY29-11 (2)	Y644M (1 CRIMP)	20	BROWN	U34RT (4)	15	PURPLE	U28RT (2)			
500 Kcmil (.814 DIA.) [21 DIA.]	250 Kcmil (.575 DIA.) [15 DIA.]	YST3429	2.25 [57]	5.88 [149]	1.78 [45]	2.58 [66]	1.06 [27]	.75 [19]	2-5/16 [59]	1-7/8 [48]	MY29-3 (2) MY29-11 (2)	Y644M (1 CRIMP)	20	BROWN	U34RT (4)	16	YELLOW	U29RT (2)			
500 Kcmil (.814 DIA.) [21 DIA.]	300 Kcmil (.630 DIA.) [16 DIA.]	YST3430	2.25 [57]	5.94 [151]	2.25 [57]	2.97 [75]	1.06 [27]	.81 [20]	2-5/16 [59]	2-5/16 [59]	--	Y644M (1 CRIMP)	20	BROWN	U34RT (4)	17	WHITE	U30RT (4)			
500 Kcmil (.814 DIA.) [21 DIA.]	350 Kcmil (.681 DIA.) [17 DIA.]	YST3431	2.25 [57]	6.00 [152]	2.25 [57]	2.84 [72]	1.06 [27]	.88 [22]	2-5/16 [59]	2-5/16 [59]	--	Y644M (1 CRIMP)	20	BROWN	U34RT (4)	18	RED	U31RT (4)			
500 Kcmil (.814 DIA.) [21 DIA.]	400 Kcmil (.728 DIA.) [18 DIA.]	YST3432	2.25 [57]	6.06 [154]	2.25 [57]	2.84 [72]	1.06 [27]	.95 [24]	2-5/16 [59]	2-5/16 [59]	--	Y644M (1 CRIMP)	20	BROWN	U34RT (4)	19	BLUE	U32RT (4)			
500 Kcmil (.814 DIA.) [21 DIA.]	500 Kcmil (.814 DIA.) [21 DIA.]	YST3434	2.25 [57]	6.19 [157]	2.60 [66]	3.09 [78]	1.06 [27]	1.06 [27]	2-5/16 [59]	2-5/16 [70]	--	Y644M (1 CRIMP)	20	BROWN	U34RT (4)	20	BROWN	U34RT (4)			



NOTES:

1. MATERIAL: COPPER
2. FINISH: TIN PLATE
3. DIMENSIONS IN BRACKETS [ ] ARE IN MILIMETERS.
4. THE MAXIMUM CABLE SIZE CRIMPED BY THE Y35 IS 400 Kcmil COPPER.
5. USE ADAPTOR (CAT NO. P-UADP) WITH "U" DIES IN Y46 HYPRESS.
6. FOR ADDITIONAL TOOLING, REFERENCE BURNDY CATALOG INSTALLATION TOOL INDEX.
7. SHOWN INSTALLED WITH NEST AND INDENTOR.

TO ORDER BURNDY PRODUCTS CALL 1-800-346-4175  
MANCHESTER, NH 03109, USA  
FOR PRODUCT INFO = <http://www.burndy.com>

**COUPLER TEE CONNECTOR**

ITEM NO: N/A

CAT NO: YST34-(TABLE)

SCALE: N/A

DRAWN BY: J GAUDET 9/22/92

CHECKER: D FILLION 9/29/92

DSN APPVL: C PALAGI 12/9/92

MFG APPVL: N/A

QC APPVL: A LLOYD 5/12/93

MKT APPVL: D HAMILTON 4/26/93

PROJ #: --

PROJECT #: --

REL LEVEL: AUTOCAD

DRAWING NO: SE23886

REV: B

SHEET 16 OF 21