

CATALOG NUMBERS	FIG NO.	COMMERCIAL COPPER CABLE RANGE		METRIC COPPER CABLE RANGE		"H"	"L"	INSTALLATION TOOLING							
		RUN	TAP	RUN	TAP			MD6 HYTOOL™		OUR840	Y35 HYPRESS™				
								DIE INDEX NUMBER	DIE CATALOG NUMBER	NUMBER OF CRIMPS	NUMBER OF CRIMPS	DIE INDEX NUMBER	DIE CATALOG NUMBER	NUMBER OF CRIMPS	
YC10C10	1	#12 SOL (Ø.081) TO #10 STR (Ø.116)	#12 SOL (Ø.081) TO #10 STR (Ø.116)	[3.32]² (Ø[2.06]) TO [6.82]² (Ø[2.95])	[3.32]² (Ø[2.06]) TO [6.82]² (Ø[2.95])	.37 [9.4]	.32 [8.1]	238	162	1		238	U238	1	
YC8C8	1	#8 SOL (Ø.129) TO #8 STR (Ø.146)	#10 SOL (Ø.102) TO #8 STR (Ø.146)	[8.43]² (Ø[3.28]) TO [10.80]² (Ø[3.71])	[5.27]² (Ø[2.59]) TO [10.80]² (Ø[3.71])	.46 [12]	.50 [13]	162	162	2		162	U162	2	
YC4C8	2	#6 SOL (Ø.162) TO #4 STR (Ø.232)	#8 SOL (Ø.129) TO #8 STR (Ø.146)	[13.3]² (Ø[4.11]) TO [21.1]² (Ø[5.89])	[8.4]² (Ø[3.24]) TO [8.4]² (Ø[3.71]) TO	.73 [19]	.62 [16]	BG OR 5/8	BG	2		BG	U-BG	1	
YC4C6	2		#6 SOL (Ø.162) TO #6 STR (Ø.184)		[13.2]² (Ø[4.11]) TO [13.2]² (Ø[4.67])	.76 [19]	.57 [14]								
YC4C4	1		#6 SOL (Ø.162) TO #4 STR (Ø.232)		[13.2]² (Ø[4.11]) TO [21.1]² (Ø[5.89])	.81 [21]	.57 [14]				W-BG	1			
YC2C4	2	#4 SOL (Ø.204) TO #2 STR (Ø.320)	#8 SOL (Ø.129) TO #4 STR (Ø.232)	[21.1]² (Ø[5.18]) TO [33.5]² (Ø[8.13])	[8.4]² (Ø[3.28]) TO [33.6]² (Ø[6.55])	.98 [25]	.67 [17]	C	W-C	2		C	U-C	1	
YC2C2	1	#2 SOL (Ø.258) TO #2 STR (Ø.320)	#2 SOL (Ø.258) TO #2 STR (Ø.320)	[33.6]² (Ø[6.55]) TO [33.5]² (Ø[8.13])	[33.6]² (Ø[6.55]) TO [33.5]² (Ø[8.13])	1.05 [28]	.67 [17]					E	U-E	3	
YC26C2	2	1/0 STR (Ø.373) TO	#8 SOL (Ø.129) TO #2 STR (Ø.320)	[53.3]² (Ø[9.47]) TO	[8.4]² (Ø[3.24]) TO [33.5]² (Ø[8.13])	1.30 [33]	.92 [23]	--	--	--		OR	U-O	1	
YC26C26	1	2/0 STR (Ø.418)	1/0 STR (Ø.373) TO 2/0 STR (Ø.418)	[67.7]² (Ø[10.62])	[53.3]² (Ø[9.47]) TO [67.7]² (Ø[10.62])	1.35 [34]	.92 [23]	--	--	--		O	U-O	1	
YC28C2	2	3/0 STR (Ø.470) TO 4/0 STR (Ø.528)	#6 SOL (Ø.162) TO #2 STR (Ø.320)	[85.2]² (Ø[11.94]) TO [107.2]² (Ø[13.41])	[13.3]² (Ø[4.11]) TO [33.5]² (Ø[8.13])	1.65 [42]	1.07 [27]	--	--	--		F	U-F	3	
YC28C26	2		1/0 STR (Ø.373) TO 2/0 STR (Ø.418)		[53.3]² (Ø[9.47]) TO [67.7]² (Ø[10.62])	1.61 [41]	1.07 [27]	--	--	--	--		OR		
YC28C28	1		3/0 STR (Ø.470) TO 4/0 STR (Ø.528)		[85.2]² (Ø[11.94]) TO [107.2]² (Ø[13.41])	1.56 [40]	1.07 [27]	--	--	--	--		D3	U-D3	1

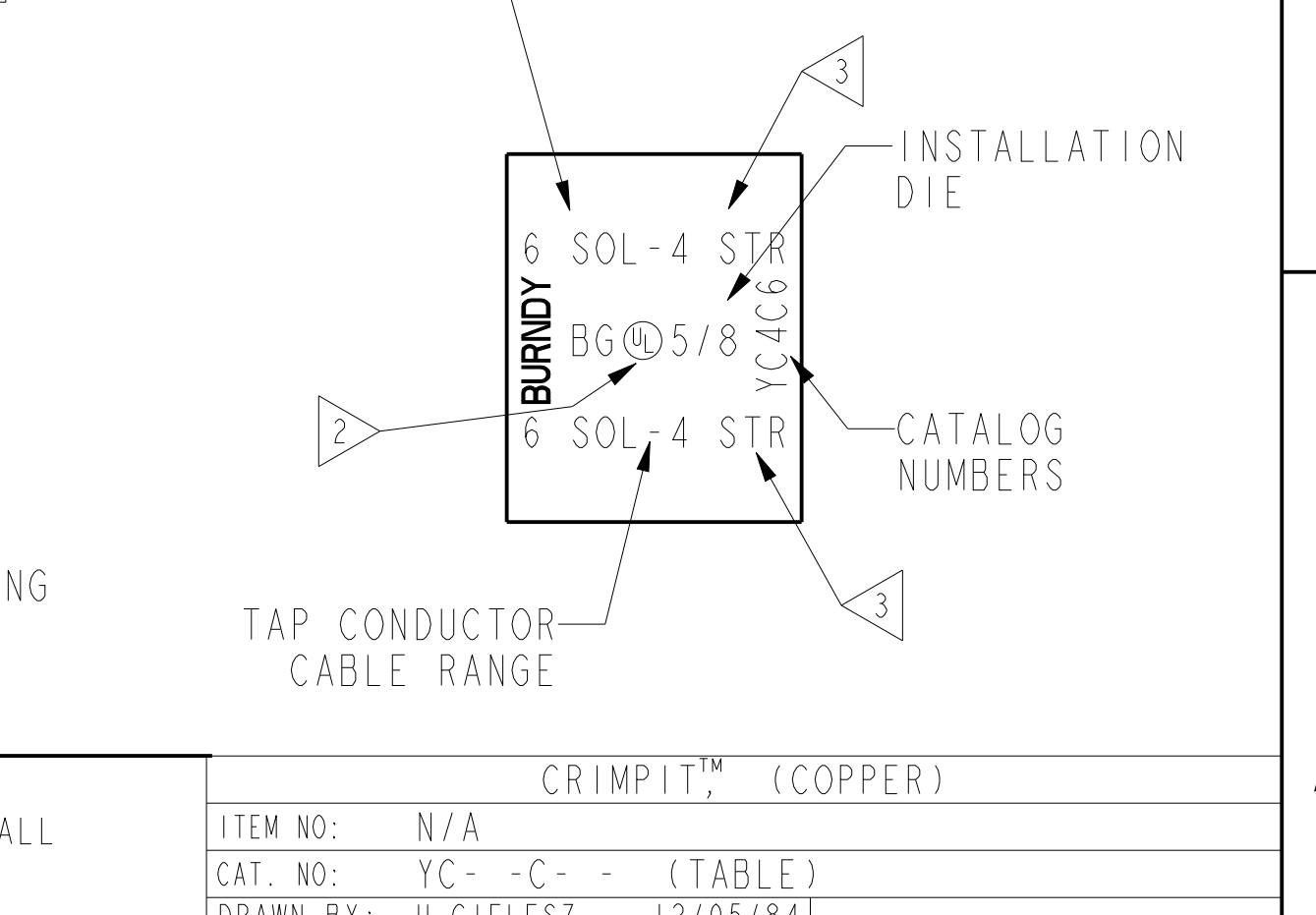
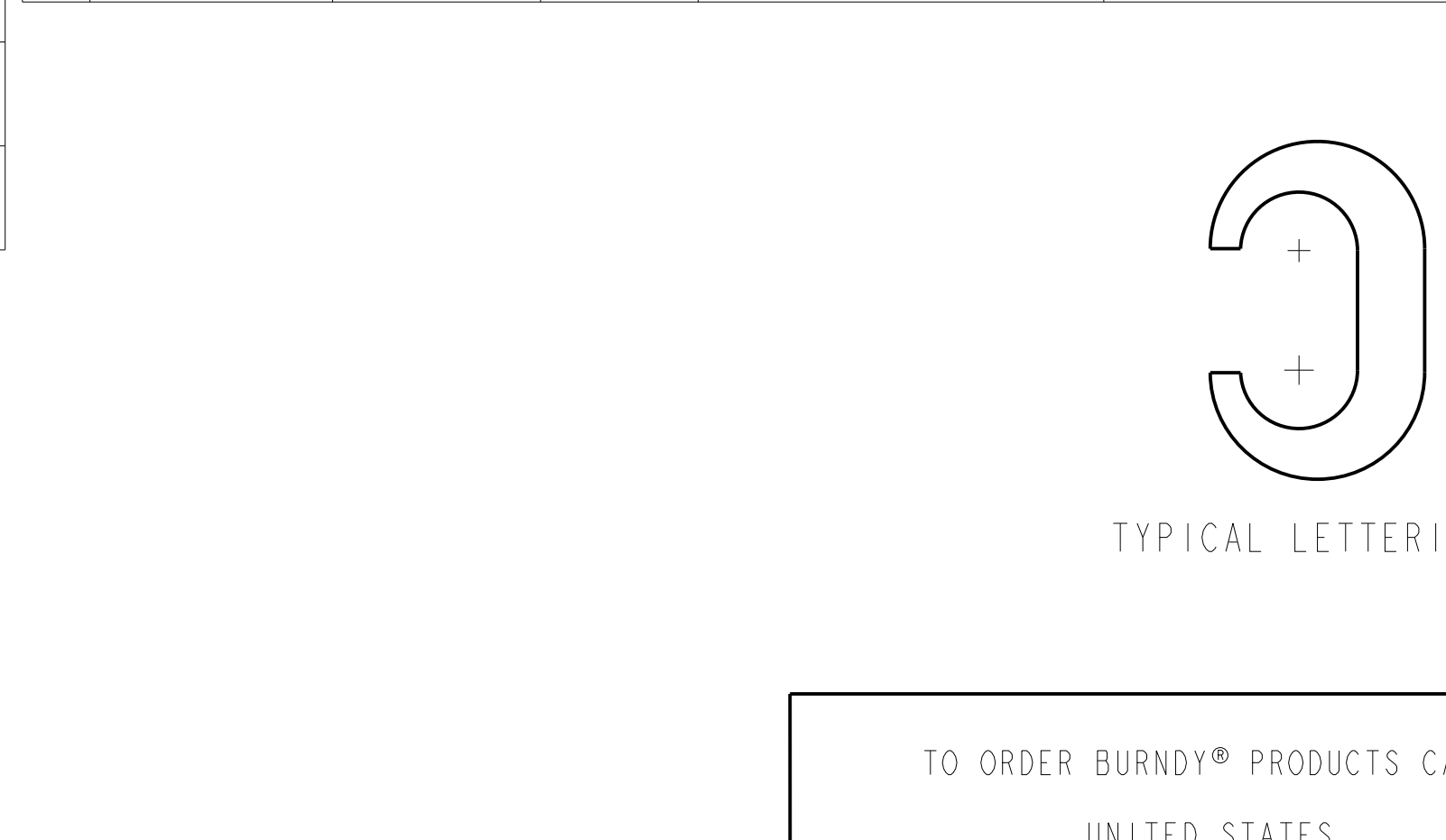
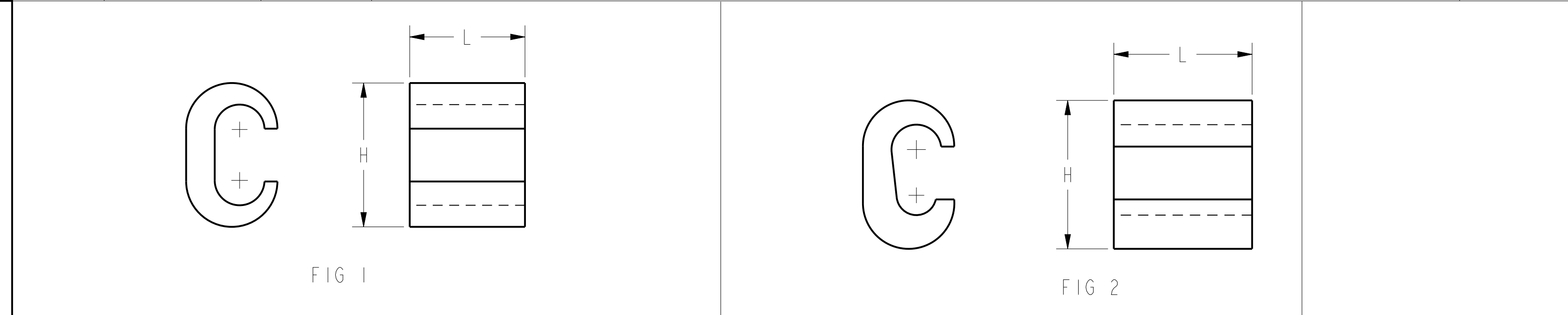
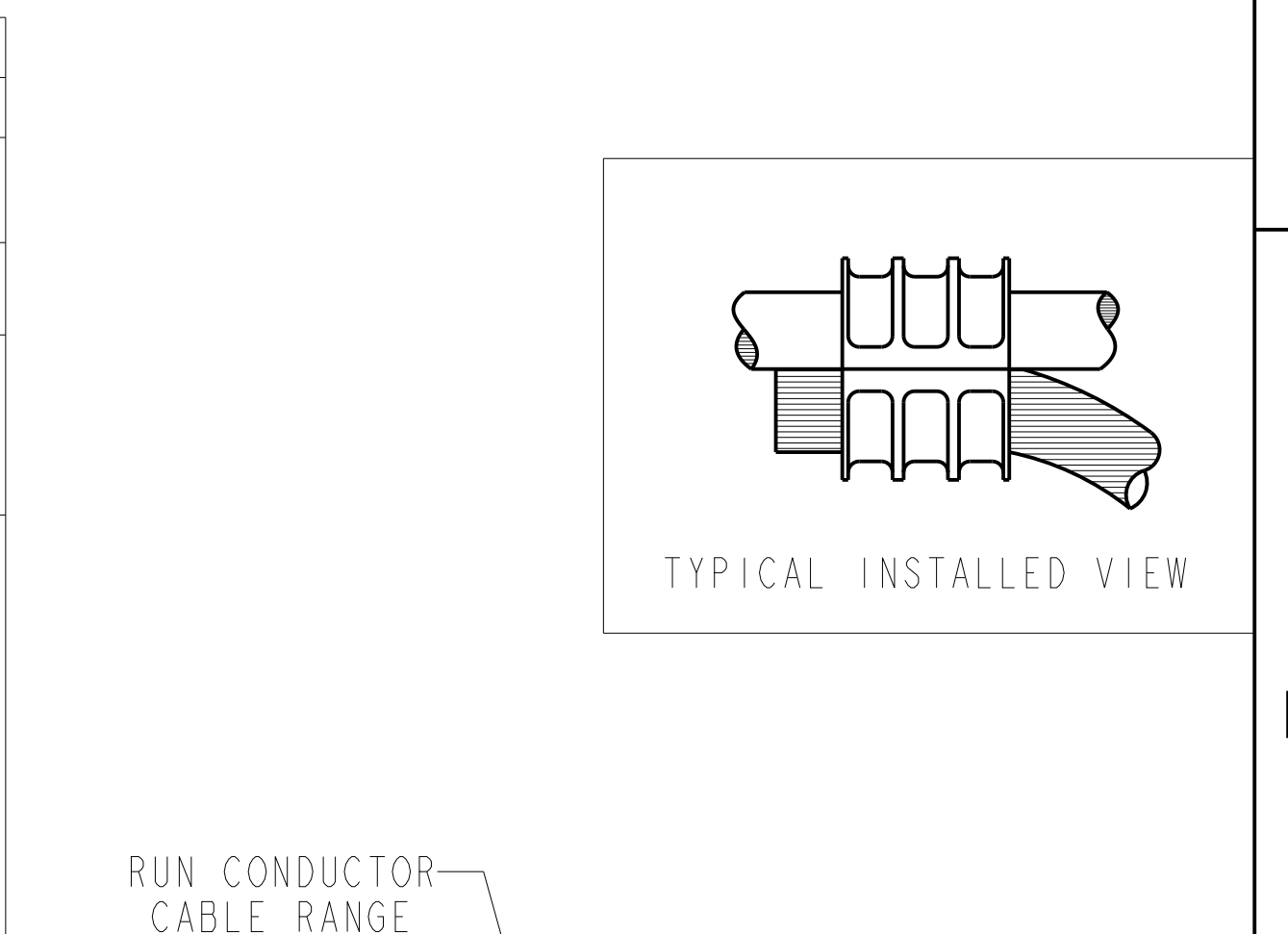
REV	DATE	DESCRIPTION	ECO	BY	C'H'K.
D	2018-04-06 00:00:00 EDT	UPDATED AS PER MARKUP	48872	YR	VS

NOTES:

- TWO CRIMPS MADE SIMULTANEOUSLY WITH ONE CLOSING OF TOOL.
- CONNECTOR NOT UL LISTED. LETTERING ON YC10C10 WILL NOT HAVE UL SYMBOL. THE WORD "OR" WILL REPLACE IT.
- WHEN MAX. AND MIN. CONDUCTOR NUMBERS ARE EQUIVALENT, THE MAX. CONDUCTOR NUMBERS NEED NOT BE SHOWN. BOTH NUMBERS WILL BE SHOWN IF THEY ARE NOT EQUIVALENT.
- THESE CONNECTORS ARE LINED WITH PENETROX™ S4 SILICON IRON. A NON BERYLLIUM CONTAINING MATERIAL. NP SUFFIX AT THE END OF CAT# DENOTES A NON PENETROX™ VERSION OF THESE CONNECTORS.
- DIMENSIONS IN BRACKETS [ ] ARE IN MILLIMETERS.
- YC4C4 ACCEPTS EXPANDED TAP RANGE OF 6 SOL - 4 STR.
- YC2C4 ACCEPTS EXPANDED RUN RANGE OF 4 SOL - 2 STR AND TAP RANGE OF 8 SOL - 2 SOL.

SELECTOR CHART	RUN CONDUCTOR														
	[3.3]² SOL.	[6.8]² STR.	[8.4]² SOL.	[8.4]² STR.	[13.2]² SOL.	[13.2]² STR.	[21.1]² SOL.	[21.1]² STR.	[33.6]² SOL.	[33.5]² STR.	[53.3]² STR.	[67.7]² STR.	[85.2]² [107.2]² STR.		
	#12 SOL.	#10 STR.	#8 SOL.	#8 STR.	#6 SOL.	#6 STR.	#4 SOL.	#4 STR.	#2 SOL.	#2 STR.	1/0 STR.	2/0 STR.	3/0 STR.	4/0 STR.	
[3.3]² SOL.	#12 SOL.	YC10C10													
[5.3]² SOL.	#10 SOL.			YC8C8											
[6.8]² STR.	#10 STR.														
[8.4]² SOL.	#8 SOL.														
[8.4]² STR.	#8 STR.							YC4C8							
[13.2]² SOL.	#6 SOL.											YC2C4			
[13.2]² STR.	#6 STR.													YC26C2	
[21.1]² SOL.	#4 SOL.														
[21.1]² STR.	#4 STR.														
[21.1]² STR.	#4 STR.														
[33.6]² SOL.	#2 SOL.														
[33.5]² STR.	#2 STR.														
[53.3]² STR.	1/0 STR.														
[67.7]² STR.	2/0 STR.													YC26C26	
[85.2]² STR.	3/0 STR.														
[107.2]² STR.	4/0 STR.													YC28C28	

SPECIAL CONDUCTOR COMBINATION	SELECTOR CHART				
	[26.6] SOL.	[33.6]² SOL.	[33.5]² STR.	[53.5]² STR.	[67.7]² STR.
	#3 SOL.	#2 SOL.	#2 STR.	1/0 [26.6]	2/0 STR.
[5.3]² SOL.	#10 SOL.				
[6.8]² STR.	#10 STR.				
[8.4]² SOL.	#8 SOL.				
[8.4]² STR.	#8 STR.				
[13.2]² SOL.	#6 SOL.				
[13.2]² STR.	#6 STR.				
[21.1]² SOL.	#4 SOL.				
[21.1]² STR.	#4 STR.				
[26.6]² SOL.	#3 SOL.				



TO ORDER BURNDY® PRODUCTS CALL UNITED STATES 1-800-346-4175 (LONDONDERRY, NH) CANADA: 1-800-361-6975 (QUEBEC) 1-800-387-6487 (ALL OTHER PROVINCES) FOR PRODUCT INFO: <a href="http://www.burndy.com">http://www.burndy.com</a>	CRIMPIT™ (COPPER)	
	ITEM NO:	N/A
	CAT. NO:	YC - - - (TABLE)
	DRAWN BY:	H CIELESZ 12/05/84
	CHECKER:	C.A.R. 12/10/84
	DSN APPVL:	R.L. 12/11/84
MFG APPVL:	--	
QA APPVL:	D VARIO 07/24/97	
MKT APPVL:	D HAMILTON --	
PROD FAM:	--	
PROJECT #:	--	
DOCUMENT TYPE:	Sales	
REL LEVEL:	Released	
SCALE:	4:1	
DRAWING NO:	SE090670	
REV:	D	
SHEET:	1 OF 1	