

CATALOG NUMBER	CABLE SIZE CLASS K		FIG. NO.	STUD SIZE	DIMENSIONS										DIE INDEX	INSTALLATION DATA		
	SIZE	STRANDING			B	BB	C	D MIN.	E	SHROUD I.D.	L	N	T REF.	S		Y35 Y39 Y45 Y46 Y750		
					NEST	INDENTOR	NO. OF CRIMPS											
YA1CLH89TN	#2	665/30	1	5/16	.88 [22]	.62 [16]	.81 [21]	.85 [22]	--	.50 [13]	3.15 [80]	.53 [13]	.12 [3]	.13 [3]	1018	UICD-1	Y34PR	1
YA25LH94TN	#1	836/30	1	5/16	.88 [22]	.62 [16]	.75 [19]	1.04 [26]	--	.54 [14]	3.20 [81]	.53 [13]	.12 [3]	.18 [5]	1019	U25D-1	Y34PR-2	1
YA26LH95TN	1/0	1064/30	1	5/16	.92 [23]	.75 [19]	.83 [21]	1.04 [26]	--	.61 [16]	3.37 [86]	.53 [13]	.12 [3]	.19 [5]	1020	U26D-1	Y34PR-2	1
YA27LH97TN	2/0	1323/30	1	5/16	1.00 [25]	.75 [19]	.91 [23]	1.04 [26]	--	.65 [17]	3.44 [87]	.53 [13]	.12 [3]	.20 [5]	1021	U27D-1	Y34PR-2	1
YA27LH98TN	2/0	1323/30	1	1/2	1.00 [25]	.75 [19]	.91 [23]	1.04 [26]	--	.65 [17]	3.44 [87]	.53 [13]	.12 [3]	.20 [5]	1021	U27D-1	Y34PR-2	1
YA28LH94TN	3/0	1666/30	1	5/16	1.00 [25]	.75 [19]	1.02 [26]	1.04 [26]	--	.72 [18]	3.44 [87]	.53 [13]	.14 [4]	.20 [5]	1022	U28D-1	Y34PR-2	1
YA28LH95TN	3/0	1666/30	1	1/2	1.00 [25]	.75 [19]	1.02 [26]	1.04 [26]	--	.72 [18]	3.44 [87]	.53 [13]	.14 [4]	.20 [5]	1022	U28D-1	Y34PR-2	1
YA282LH120TN	3/0	1666/30	2	1/2	1.44 [37]	.75 [19]	1.02 [26]	3.00 [76]	1.75 [44]	.72 [18]	6.09 [155]	.62 [16]	.14 [4]	.20 [5]	1022	U28D-1	Y34PR-2	1
YA30LH86TN	4/0	2107/30	1	5/16	1.06 [27]	.75 [19]	1.20 [31]	1.04 [26]	--	.83 [21]	3.59 [91]	.53 [13]	.16 [4]	.20 [5]	1024	U30D-1	Y34PR-2	1
YA30LH87TN	4/0	2107/30	1	1/2	1.06 [27]	.75 [19]	1.20 [31]	1.04 [26]	--	.83 [21]	3.59 [91]	.53 [13]	.16 [4]	.20 [5]	1024	U30D-1	Y34PR-2	1
YA302LH90TN	4/0	2107/30	2	1/2	1.06 [27]	.75 [19]	1.20 [31]	2.82 [72]	1.75 [44]	.83 [21]	5.62 [143]	.53 [13]	.16 [4]	.20 [5]	1024	U30D-1	Y34PR-2	1

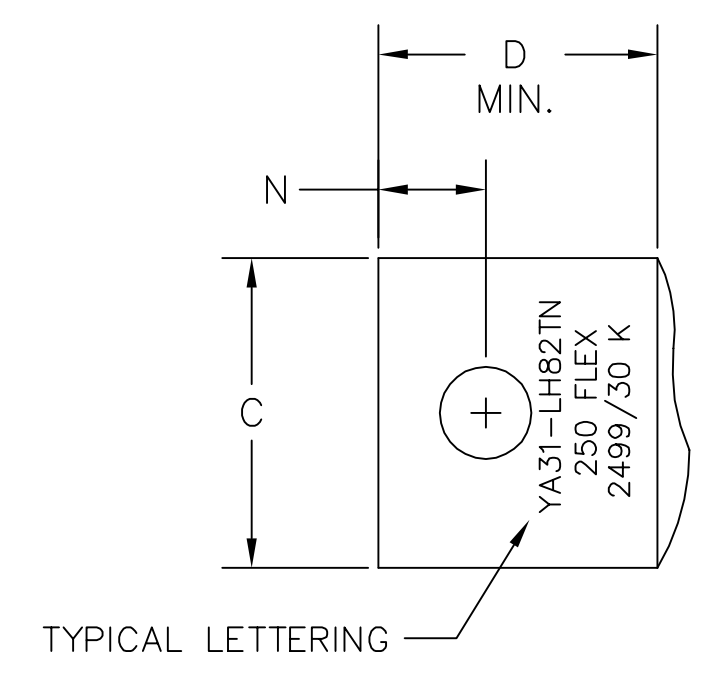


FIG. 1

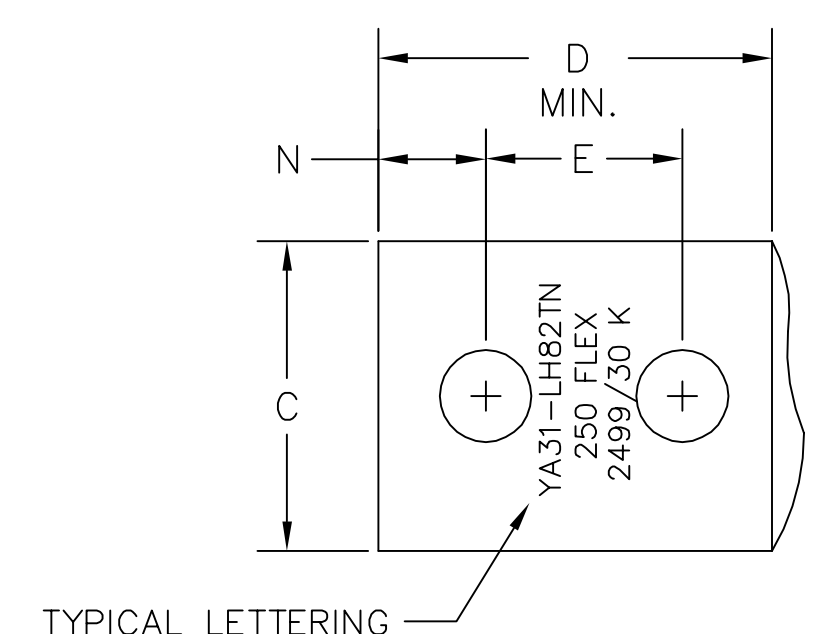
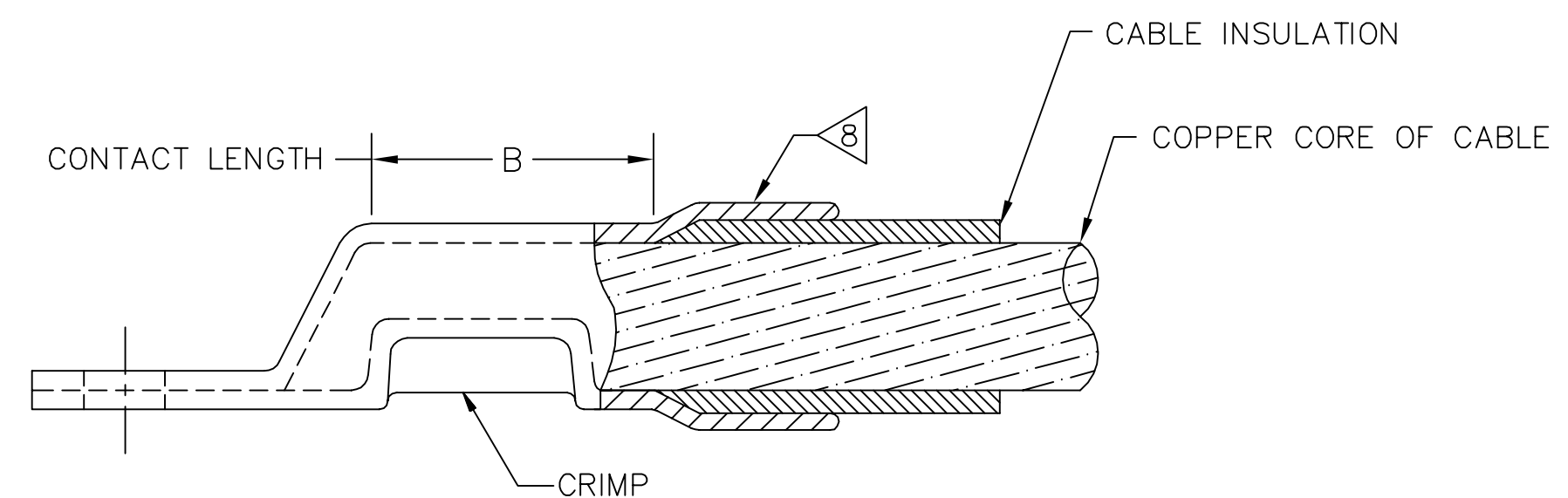
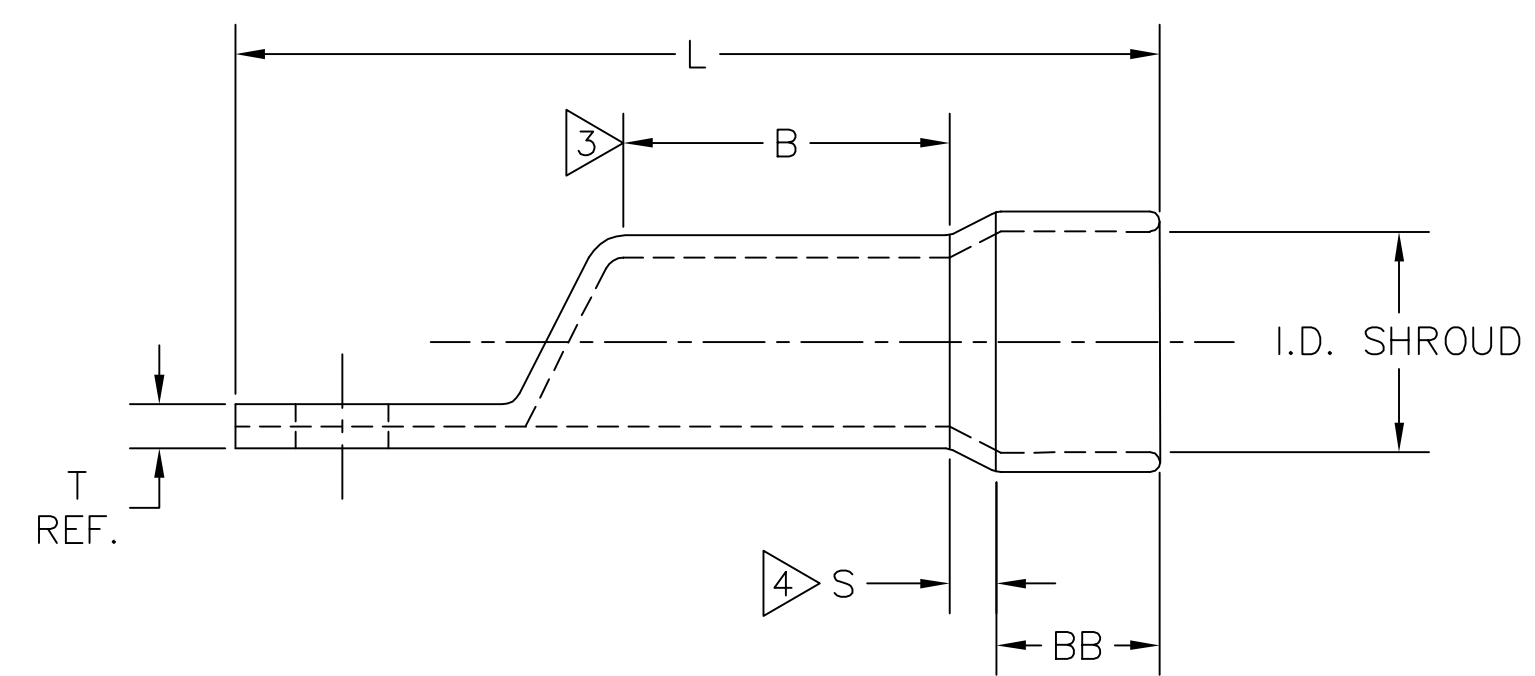


FIG. 2



VIEW OF CONNECTOR CRIMPED



NOTES:

1. MATERIAL: COPPER
2. FINISH: TIN-PLATED
3. STRIP INSULATION FROM CABLE FOR DISTANCE "B" (SEE TABLE)
4. SCARF INSULATION FROM CABLE FOR DISTANCE "S" (SEE TABLE)
5. CATALOG NUMBER Y35P3 ADAPTOR IS REQUIRED TO USE Y34PR TYPE INDENTORS WITH 'U' TYPE NEST DIES IN Y35 & Y750 SERIES TOOLS.
6. CATALOG NUMBER PT6515 ADAPTOR IS REQUIRED TO USE 'U' TYPE DIES IN Y45 SERIES TOOLS.
7. CATALOG NUMBER PUADP-1 ADAPTOR IS REQUIRED TO USE 'U' TYPE DIES IN Y46 SERIES TOOLS.
8. SHROUD NOT CRIMPED.
9. P39D NEST & P48PR-1 INDENTOR FOR Y46 HYPRESS™ ONLY.
10. DIMENSIONS IN BRACKETS [] ARE IN MILLIMETERS ROUNDED OFF TO THE NEAREST MILLIMETER, UNLESS OTHERWISE NOTED, AND ARE FOR REFERENCE ONLY.

REV.	DATE	DESCRIPTION	ECO	BY	C'K'D.
F	11/06/17	FORMAT CHANGE	47985	JP	MB

TO ORDER BURNDY® PRODUCTS CALL
 UNITED STATES:
 1-800-346-4175 (LONDONDERRY, NH)
 CANADA:
 1-800-361-6975 (QUEBEC)
 1-800-387-6487 (ALL OTHER PROVINCES)
 FOR PRODUCT INFO: <http://www.burndy.com>

BATTERY TERMINAL, SHROUDED	
ITEM NO: N/A	
CAT NO: YA- - - LH- - TN (TABLE)	
SCALE: 1/1	
DRAWN BY: D DOBRINSKI 5/1/91	
CHECKER: K HENRY 5/28/91	
DSN APPVL: R MACDONALD 5/18/91	
MFG APPVL: S HOLLOWAY 5/28/91	
QC APPVL: A LLOYD 5/13/91	
MKT APPVL: G.S.G. 5/28/91	
PROJ #:	SIZE
DOCUMENT TYPE: Sales	D
REL LEVEL: Released	
DRAWING NO	REV
SE206996	F
SHEET 1 OF 2	

