

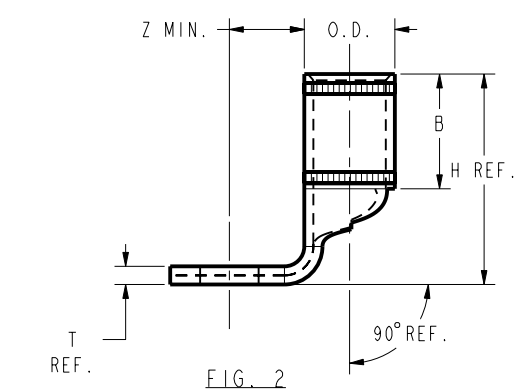
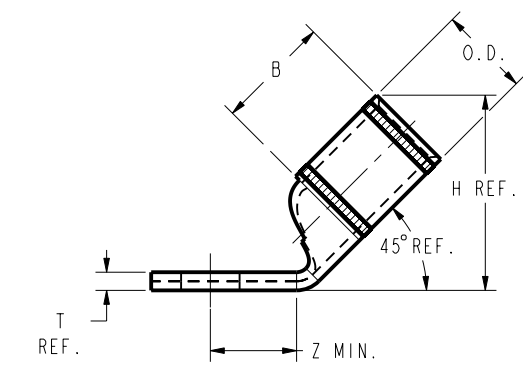
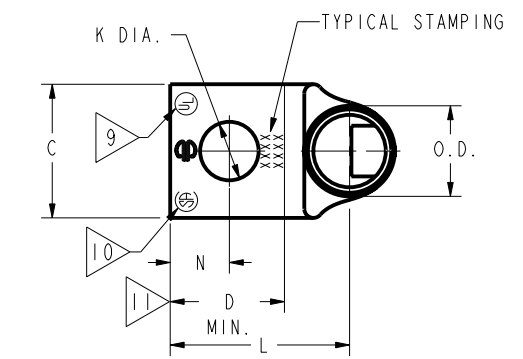
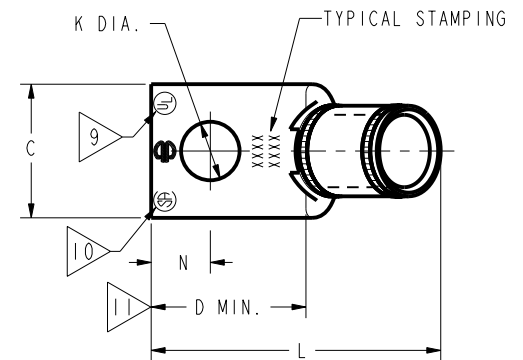
DRAWING NO. SE209240	7		6		5		4		3		2		1											
	CATALOG NUMBER	CODE (AWG)	NAVY	METRIC SIZE (CLASS 2)	BOLT SIZE	METRIC BOLT SIZE	FIG. NO.	DIMENSIONS							REVI	DATE	DESCRIPTION	ECO	BY	C'H'K.				
							B	C	H REF.	K DIA.	L	N	O.D.	T REF.	Z MIN.									
YA3CL45	#3 AWG #2 SOL	50	25mm ² STR [6.6]	5/16	M8	1	.88 [22]	.55 [14]	1.11 [28]	.33 [8]	1.76 [45]	.34 [9]	.38 [10]	.09 [2]	.36 [9]									
YA3CL90						2	.88 [22]	.55 [14]	1.32 [34]	.33 [8]	.98 [25]	.34 [9]	.38 [10]	.09 [2]	.36 [9]									
YA3CL445				3/8	M10	1	.88 [22]	.58 [15]	1.13 [29]	.41 [10]	1.89 [48]	.41 [10]	.38 [10]	.08 [2]	.42 [11]									
YA3CL490						2	.88 [22]	.58 [15]	1.34 [34]	.41 [10]	1.10 [28]	.41 [10]	.38 [10]	.08 [2]	.42 [11]									
YA3CL645				1/2	M12	1	.88 [22]	.73 [19]	1.12 [28]	.53 [13]	2.10 [53]	.53 [13]	.38 [10]	.07 [2]	.55 [14]									
YA3CL690						2	.88 [22]	.73 [19]	1.31 [33]	.53 [13]	1.34 [34]	.53 [13]	.38 [10]	.07 [2]	.55 [14]									

REVI	DATE	DESCRIPTION	ECO	BY	C'H'K.
E	05/02/2012 00:00:00 AM	TOOLING DETAILS UPDATED AS PER THE MARKUP	27322	DK	MA

CONNECTOR SIZE	TOLERANCES					
	B	C	K DIA.	L	N	O.D.
-8C THRU -25	±.06	±.04	±.02	±.09	±.03	±.01
-26 THRU -34	±.08	±.04	±.02	±.12	±.03	±.01
-35 AND UP	±.09	±.06	±.02	±.15	±.06	±.01

TOLERANCE BLOCK

CATALOG NO.	COLOR CODE	DIE INFORMATION		MECHANICAL						HYDRAULIC						DIELESS (# CRIMPS)	WIRE STRIP LENGTH
		DIE INDEX	TYPE	6 YIMRTC	OUR840	MD6 MD7	MD6--R2 MD7-34R	PATMD6 PAT600	BCT500 Y500CT	8 Y34A Y34B Y34BH	5 Y35, Y39 Y750, PAT750	5 4 Y46 PAT46	5 3 Y45	Y48B	Y60BHU		
YA3CL45 YA3CL90 YA3CL445 YA3CL490 YA3CL645 YA3CL690	WHITE	9	WHITE DIE SET NEST INDENTOR	WHITE (2)	W3CRT (1)	W3CRT (1)	W3CRT (1)	W3CRT (1)	W3CRT (1)	-----	U3CRT(1)	U3CRT(1)	U3CRT(1)	-----	-----	MECHANICAL: MY29-3(1) MY29-11(1) MRC840(1) HYDRAULIC: Y644(1) Y81KFT(1) Y4PC834(1)	15/16"
										B3CD(1) A3CD(1)	U3CD-1(1)	U3CD-1(1)	U3CD-1(1)				
										Y34PR	Y34PR	Y34PR	Y34PR				



REFERENCE: SD079848

- NOTES:
- MATERIAL : COPPER TUBING.
 - FINISH: ELECTRO-TIN PLATED.
 - CATALOG # PT6515 ADAPTOR IS REQUIRED TO USE "U" DIES IN Y45 SERIES TOOLS.
 - CATALOG # PUADP-1 ADAPTOR IS REQUIRED TO USE "U" DIES IN Y46 SERIES TOOLS.
 - Y35P3 INDENTOR ADAPTOR REQUIRED FOR Y34PR INDENTOR.
 - PERMANENT DIE IN TOOLING.
 - DIMENSIONS IN BRACKETS [] ARE IN MILLIMETERS ROUNDED OFF TO THE NEAREST MILLIMETER, UNLESS OTHERWISE NOTED, AND ARE FOR REFERENCE ONLY.
 - FOR USE BY CUSTOMERS THAT HAVE THIS HYPRESS™. NO NEW Y34A HYPRESS™ TOOLS ARE BEING PROCESSED. Y34A USES A-D NEST DIES ONLY.
 - CONNECTORS ARE UL LISTED; UNDRILLED VERSIONS ARE NOT UL LISTED.
 - CONNECTORS ARE CSA CERTIFIED; UNDRILLED VERSIONS ARE NOT CSA CERTIFIED.
 - FOR UNDRILLED VERSIONS ADD SUFFIX "-U" TO END OF CATALOG NUMBER. FOR UNDRILLED VERSIONS, USE D MIN. = N MAX. + Z MIN.
 - "X", "W-RT", "W-VT", "U", & "L" DIE SETS ARE COLOR CODED. "A", "B", AND "C" DIES ARE NOT COLOR CODED. NESTS AND INDENTOR TYPE ARE NOT COLOR CODED.

TO ORDER BURNDY® PRODUCTS CALL		HYLUG™ COPPER	
UNITED STATES 1-800-346-4175 (LONDONDERRY, NH)		ITEM NO: N/A	CAT. NO: YA3C-L- (TABLE)
CANADA: 1-800-361-6975 (QUEBEC) 1-800-387-6487 (ALL OTHER PROVINCES)		DRAWN BY: J MICHAUD 12/06/94	CHECKER: D FELLION 12/06/94
FOR PRODUCT INFO: http://www.burndy.com		DSN APPVL: C PALAGI 12/09/94	MFG APPVL: --
		QA APPVL: C ACKERMAN 12/23/94	MKT APPVL: T NELSON 12/16/94
		PROD FAM: CM&R COMPRESSION	DRAWING NO: SE209240
		PROJECT #: --	SCALE: 1:1
		DOCUMENT TYPE: Sales	REV: E
		REL LEVEL: Released	SHEET 7 OF 38

REV: PE0200