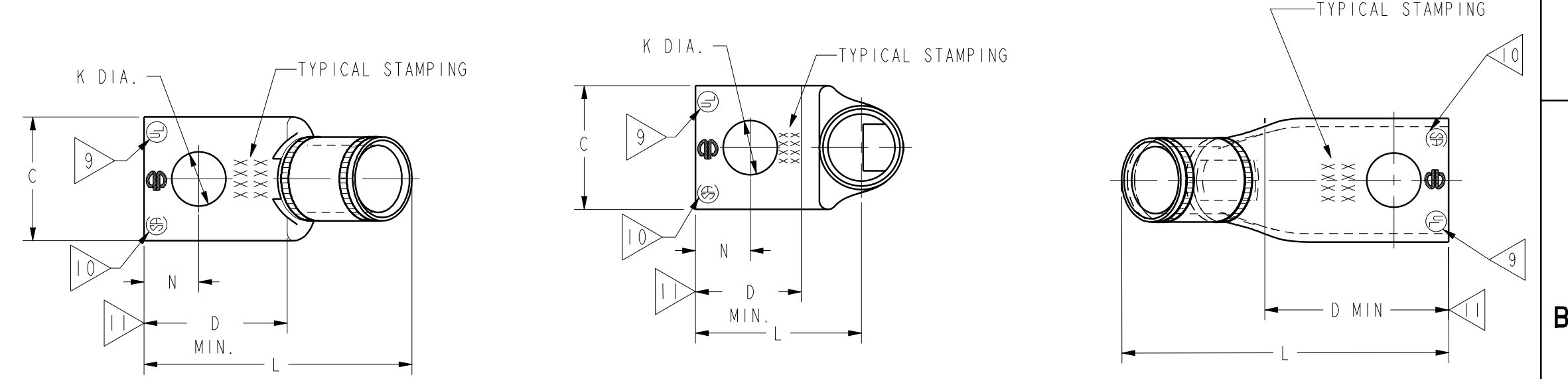


DRAWING NO. SE209240	7			6		5		4			3		2		1											
	STRANDED COPPER CONDUCTOR ACCOMMODATED			BOLT SIZE	METRIC BOLT SIZE	DIMENSIONS										REV	DATE	DESCRIPTION	ECO	BY	C'H'K.					
CATALOG NUMBER	CODE (AWG)	NAVY	METRIC SIZE (CLASS 2)	BOLT SIZE	METRIC BOLT SIZE	FIG. NO.	B	C	H REF.	K DIA.	L	N	O.D.	T REF.	Z MIN.	C	2018-04-12 01:00:00 EDT	UPDATED AS PER MU	48895	BK	VS					
YA27L245	3/0 AWG	150	-----	1/4	M6	1	1.00 [25]	.91 [23]	1.49 [38]	.27 [7]	1.91 [49]	.25 [6]	.62 [16]	.13 [3]	.33 [8]	TOLERANCES	-8C THRU -25 ±.06 ±.04 ±.02 ±.09 ±.03 ±.01	-26 THRU -34 ±.08 ±.04 ±.02 ±.12 ±.03 ±.01	-35 AND UP ±.09 ±.06 ±.02 ±.15 ±.06 ±.01	CONNECTOR SIZE	B	C	K DIA.	L	N	O.D.
YA27L290						2	1.66 [42]	.27 [7]	.99 [25]	.25 [6]	.33 [8]															
YA27L345				5/16	-----	1	1.49 [38]	.33 [8]	2.03 [52]	.34 [9]	.36 [9]															
YA27L390						2	1.66 [42]	.33 [8]	1.12 [28]	.34 [9]	.36 [9]															
YA27L445				3/8	-----	1	1.49 [38]	.40 [10]	2.16 [55]	.41 [10]	.42 [11]															
YA27L490						2	1.66 [42]	.40 [10]	1.24 [31]	.41 [10]	.42 [11]															
YA27L3135				5/16	-----	3	1.00 [25]	.91 [23]	1.49 [38]	.33 [8]	2.03 [52]	.34 [9]	.62 [16]	.13 [3]	.36 [9]											

CONNECTOR SIZE	TOLERANCES					
	B	C	K DIA.	L	N	O.D.
-8C THRU -25	±.06	±.04	±.02	±.09	±.03	±.01
-26 THRU -34	±.08	±.04	±.02	±.12	±.03	±.01
-35 AND UP	±.09	±.06	±.02	±.15	±.06	±.01

TOLERANCE BLOCK

INSTALLATION TOOLING (# CRIMPS)																
CATALOG NO.	COLOR CODE	DIE INFORMATION		MECHANICAL RATCHET				HYDRAULIC					DIELESS (# CRIMPS)	WIRE STRIP LENGTH		
		DIE INDEX	TYPE	6 YIMRTC	OUR840	MD6 MD7	MD6--R2 MD7-34R	PATMD6 PAT600	8 Y34A Y34B Y34BH	5 Y35, Y39 Y750, PAT750	5 4 Y46 PAT46	5 3 Y45			Y48B	Y60BHU
YA27L45 YA27L90	ORANGE	14	ORANGE DIE SET	-----	X27RT(3)	X27RT(2) W27RT(2) W27VT(2)	X27RT(2) W27RT(2) W27VT(2)	X27RT(2) W27RT(2) W27VT(2)	-----	U27RT(1)	U27RT(1)	U27RT(1)	-----	-----	MECHANICAL: MY29-3(1) MY29-11(1) MRC840(2)	1-1/16"
			NEST INDENTOR	-----	-----	-----	-----	-----	B27D(1) A27D(1) Y34PR	U27D-1(1) Y34PR	U27D-1(1) Y34PR	U27D-1(1) Y34PR	-----	-----	HYDRAULIC: Y644(1) Y81KFT(2) Y4PC834(2)	



- NOTES:
- MATERIAL : COPPER TUBING.
 - FINISH: ELECTRO-TIN PLATED.
 - CATALOG # PT6515 ADAPTOR IS REQUIRED TO USE "U" DIES IN Y45 SERIES TOOLS.
 - CATALOG # PUADP-1 ADAPTOR IS REQUIRED TO USE "U" DIES IN Y46 SERIES TOOLS.
 - Y35P3 INDENTOR ADAPTOR REQUIRED FOR Y34PR INDENTOR.
 - PERMANENT DIE IN TOOLING.
 - DIMENSIONS IN BRACKETS [] ARE IN MILLIMETERS ROUNDED OFF TO THE NEAREST MILLIMETER, UNLESS OTHERWISE NOTED, AND ARE FOR REFERENCE ONLY.
 - FOR USE BY CUSTOMERS THAT HAVE THIS HYPRESS™. NO NEW Y34A HYPRESS™ TOOLS ARE BEING PROCESSED. Y34A USES A--D NEST DIES ONLY.
 - CONNECTORS ARE UL LISTED; UNDRILLED VERSIONS ARE NOT UL LISTED.
 - CONNECTORS ARE CSA CERTIFIED; UNDRILLED VERSIONS ARE NOT CSA CERTIFIED.
 - FOR UNDRILLED VERSIONS ADD SUFFIX "-U" TO END OF CATALOG NUMBER. FOR UNDRILLED VERSIONS, USE D MIN. = N MAX. + Z MIN.
 - "X", "W-RT", "W-VT", "U", & "L" DIE SETS ARE COLOR CODED. "A", "B", AND "C" DIES ARE NOT COLOR CODED. NESTS AND INDENTOR TYPE ARE NOT COLOR CODED.

TO ORDER BURNDY® PRODUCTS CALL
 UNITED STATES
 1-800-346-4175 (LONDONDERRY, NH)
 CANADA:
 1-800-361-6975 (QUEBEC)
 1-800-387-6487 (ALL OTHER PROVINCES)
 FOR PRODUCT INFO: <http://www.burndy.com>

COPPER HYLUG™

ITEM NO:	N/A
CAT. NO:	YA27-L-- (TABLE)
DRAWN BY:	J MICHAUD 12/08/94
CHECKER:	D FELLION 12/08/94
DSN APPVL:	C PALAGI 12/08/94
MFG APPVL:	---
QA APPVL:	C ACKERMAN 12/23/94
MKT APPVL:	T NELSON 12/15/94
PROD FAM:	CM&R COMPRESSION
PROJECT #:	---
DOCUMENT TYPE:	Sales
REL LEVEL:	RELEASED

SCALE: 1:1
 DRAWING NO: SE209240
 SHEET 16 OF 38
 REV: C

REV: PE0200