

DRAWING NO.
SE209512

CATALOG NUMBER	STRANDED COPPER CONDUCTOR ACCOMMODATED			BOLT SIZE	METRIC BOLT SIZE	FIG. NO.	DIMENSIONS															
	CODE (AWG)	NAVY	METRIC SIZE (CLASS 2)				B	C	E	H REF	K DIA	L	N	O.D.	T REF	Z MIN						
YA28L2NTC51645	4/0 AWG	200	-----	5/16	-----	1	.88 [22]	1.02 [26]	1.75 [44]	1.49 [38]	.33 [8]	3.77 [96]	.34 [9]	.69 [18]	.14 [4]	.36 [9]						
YA28L2NTC51690						2			1.75 [44]	1.62 [41]	.33 [8]	2.92 [74]	.34 [9]									
YA28L2TC38E245						1			.75 [19]	1.49 [38]	.40 [10]	2.90 [74]	.41 [10]									
YA28L2TC38E290						2			.75 [19]	1.62 [41]	.40 [10]	2.05 [52]	.41 [10]									
YA28L2TC3845				3/8	-----	-----	1	-----	1	.88 [22]	1.02 [26]	1.00 [25]	1.49 [38]	.40 [10]	3.15 [80]	.41 [10]	.69 [18]	.14 [4]	.42 [11]			
YA28L2TC3890									2			1.00 [25]	1.62 [41]	.40 [10]	2.30 [58]	.41 [10]						
YA28L2TC38E1045							M10	-----	-----	1	-----	1	.88 [22]	1.02 [26]	1.25 [32]	1.49 [38]	.41 [10]	3.40 [86]	.41 [10]	.69 [18]	.14 [4]	.42 [11]
YA28L2TC38E1090												2			1.25 [32]	1.62 [41]	.41 [10]	2.55 [65]	.41 [10]			
YA282LN45							1/2	-----	-----	-----	-----	1	.88 [22]	1.02 [26]	1.75 [44]	1.49 [38]	.56 [14]	4.34 [110]	.62 [16]	.69 [18]	.14 [4]	.64 [16]
YA282LN90															2	1.75 [44]	1.62 [41]	.56 [14]	3.49 [89]			.62 [16]

REV	DATE	DESCRIPTION	ECO	BY	CHK	MA
C	06/01/2012 00:00:00 AM	CATALOG NUMBER ADDED TO THE TABLE	27506	DK	MA	

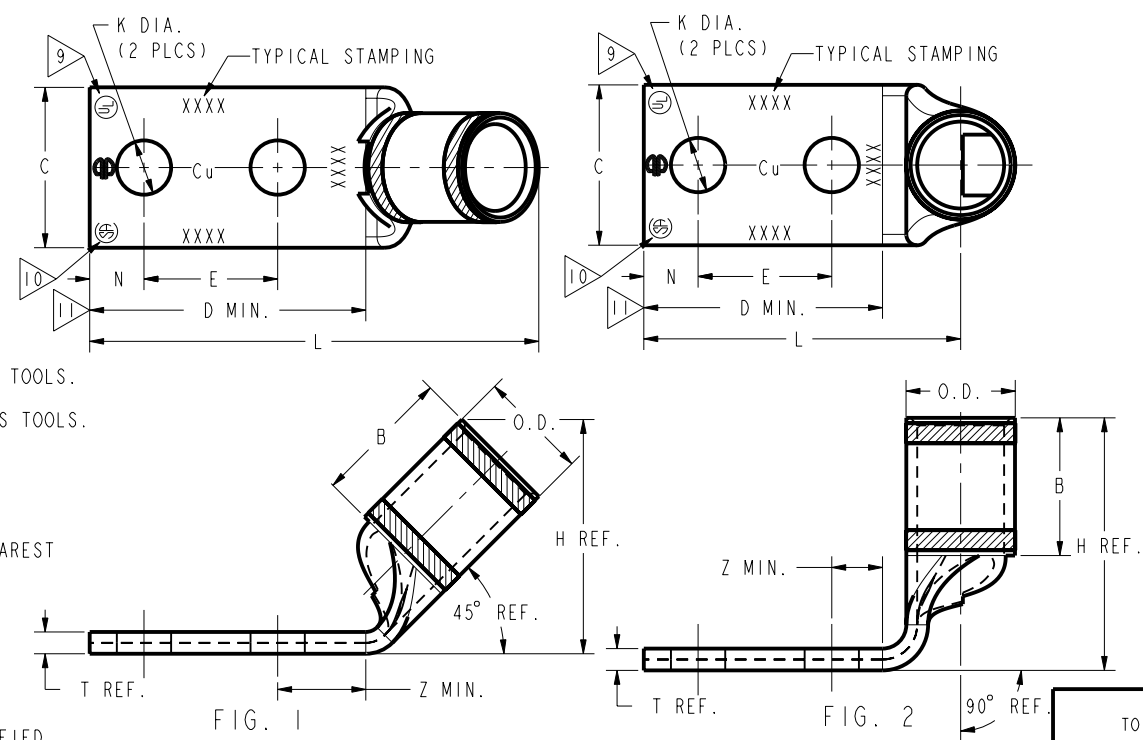
CONNECTOR SIZE	TOLERANCES						
	B	C	E	K DIA	L	N	O.D.
-8C THRU -25	±.06	±.04	±.02	±.02	±.09	±.03	±.01
-26 THRU -34	±.08	±.04	±.02	±.02	±.12	±.03	±.01
-35 AND UP	±.09	±.06	±.02	±.02	±.15	±.06	±.01

TOLERANCE BLOCK

INSTALLATION TOOLING (# CRIMPS)																
CATALOG NO.	COLOR CODE	DIE INFORMATION		MECHANICAL RATCHET				HYDRAULIC							DIELESS (# CRIMPS)	WIRE STRIP LENGTH
		DIE INDEX	TYPE	YIMRTC	OUR840	MD6 MD7	MD6--R2 MD7-34R	PATMD6 PAT600	Y34A Y34B Y34BH	Y35, Y39 Y750, BAT35 PAT750	Y46 PAT46	Y45	Y48B	Y60BHU		
ALL SHOWN ABOVE	PURPLE	15	PURPLE DIE SET	-----	X28RT(3)	W28RT(2) W28VT(2)	W28RT(2) W28VT(2)	W28RT(2) W28VT(2)	-----	U28RT(1)	U28RT(1)	U28RT(1)	C28R(1)	L28RT(1)	MECHANICAL: MY29-3(1) MY29-11(1) MRC840(2) HYDRAULIC: Y644(1) Y81KFT(2) Y4PC834(2)	1-1/8"
			NEST INDENTOR	-----	-----	-----	-----	-----	B28D(1) A28D(1) Y34PR	U28D-1(1) Y34PR	U28D-1(1) Y34PR	U28D-1(1) Y34PR	C28D(1) Y48PR	-----		

NOTES:

- MATERIAL: COPPER TUBING.
- FINISH: ELECTRO-TIN PLATED.
- CATALOG # PT6515 ADAPTOR IS REQUIRED TO USE "U" DIES IN Y45 SERIES TOOLS.
- CATALOG # PUADP-1 ADAPTOR IS REQUIRED TO USE "U" DIES IN Y46 SERIES TOOLS.
- Y35P3 INDENTOR ADAPTOR REQUIRED FOR Y34PR INDENTOR.
- PERMANENT DIE IN TOOLING.
- DIMENSIONS IN BRACKETS [] ARE IN MILLIMETERS ROUNDED OFF TO THE NEAREST MILLIMETER, UNLESS OTHERWISE NOTED, AND ARE FOR REFERENCE ONLY.
- FOR USE BY CUSTOMERS THAT HAVE THIS HYPRESS™. NO NEW Y34A HYPRESS™ TOOLS ARE BEING PROCESSED. Y34A USES A--D NEST DIES ONLY.
- CONNECTORS ARE UL LISTED, UNDRILLED VERSIONS ARE NOT UL LISTED.
- CONNECTORS ARE CSA CERTIFIED, UNDRILLED VERSIONS ARE NOT CSA CERTIFIED.
- FOR UNDRILLED VERSIONS ADD SUFFIX "-U" TO END OF CATALOG NUMBER. FOR UNDRILLED VERSIONS, USE D MIN. = N MAX. + E MIN. + Z MIN.
- "X", "W-RT", "W-VT", "U", & "L" DIE SETS ARE COLOR CODED. "A", "B", AND "C" DIES ARE NOT COLOR CODED. NESTS AND INDENTOR TYPE ARE NOT COLOR CODED.



REFERENCE: SD035209

TO ORDER BURNDY® PRODUCTS CALL
 UNITED STATES
 1-800-346-4175 (LONDONDERRY, NH)
 CANADA:
 1-800-361-6975 (QUEBEC)
 1-800-387-6487 (ALL OTHER PROVINCES)
 FOR PRODUCT INFO: <http://www.burndy.com>

COPPER HYLUG™	
ITEM NO: --	SCALE: 3:2
CAT. NO: YA-L-2TC-45-90/YA--2L-45-90, YA--2LN-45-90/YA-4L-45-90	REV: C
DRAWN BY: J. MICHARD 02/03/95	
CHECKER: D. FILLION 02/21/95	
DSN APPVL: C. PALAGI 03/09/95	
MFG APPVL: N/A	
QA APPVL: C. ACKERMAN 04/03/95	
MKT APPVL: T. NELSON 03/13/95	
PROD FAM: CM&R COMPRESSION	DRAWING NO: SE209512
PROJECT #: --	SIZE: D
DOCUMENT TYPE: Sales	SHEET 24 OF 52
REL LEVEL: Released	

REV: PE0200