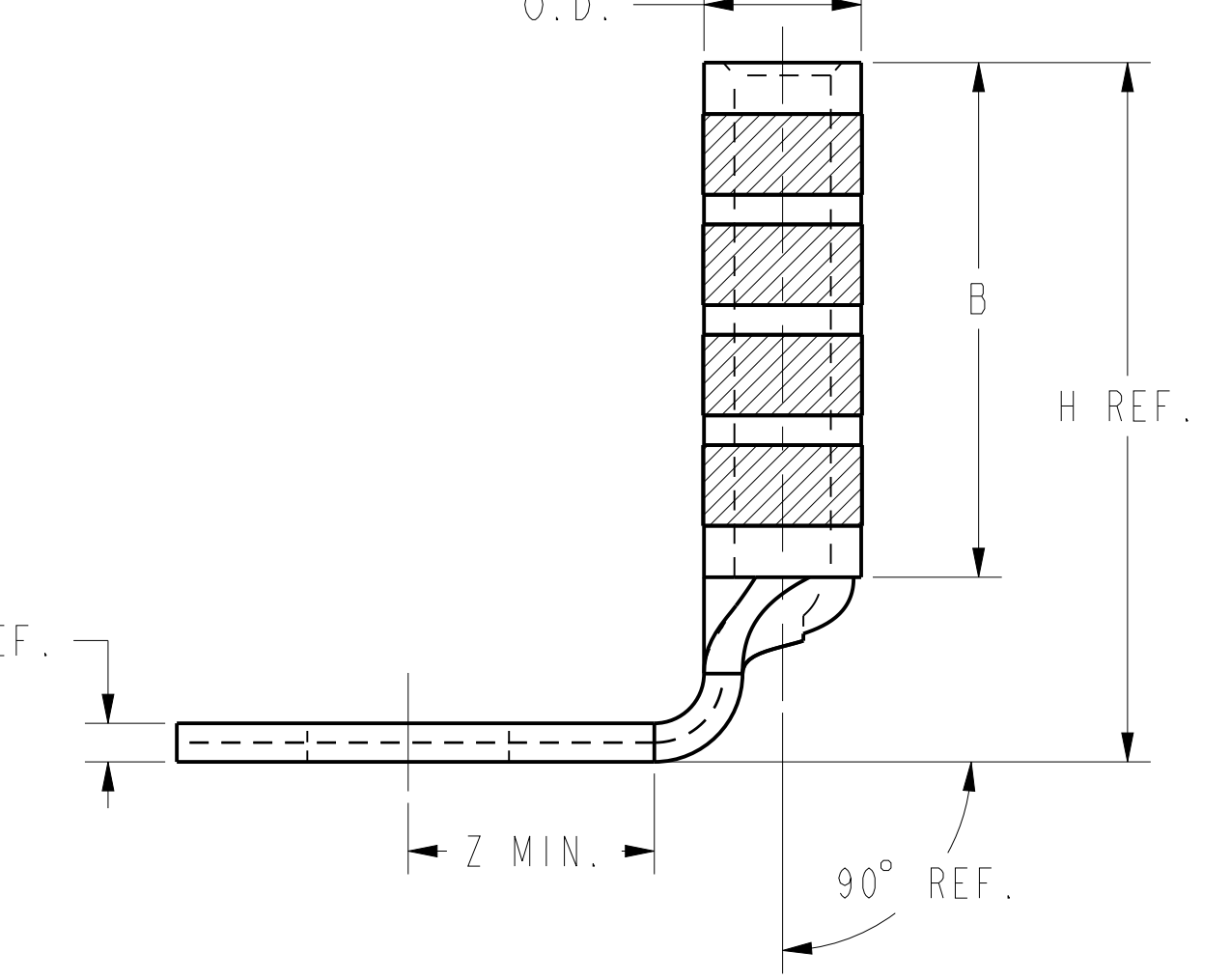
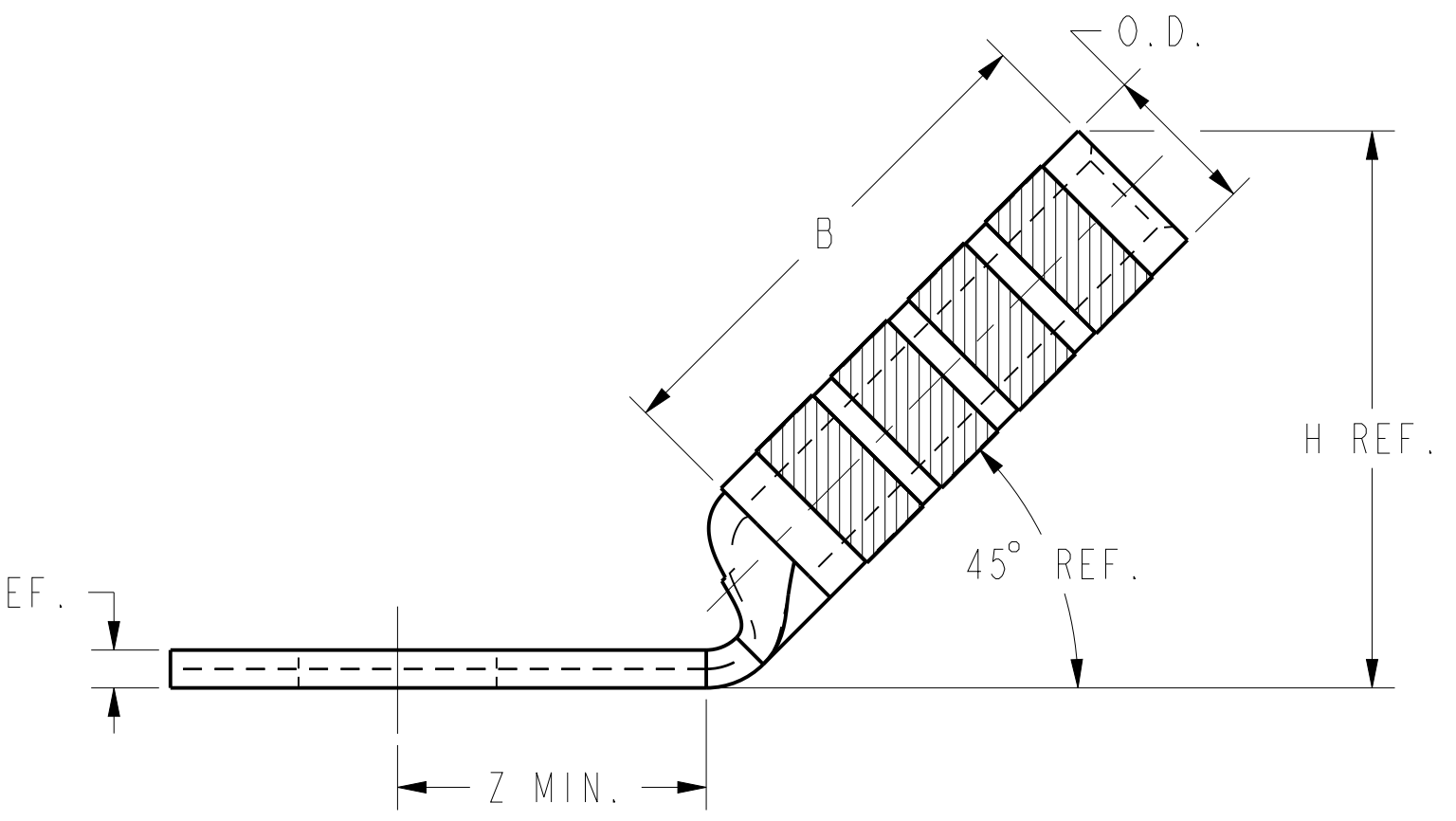
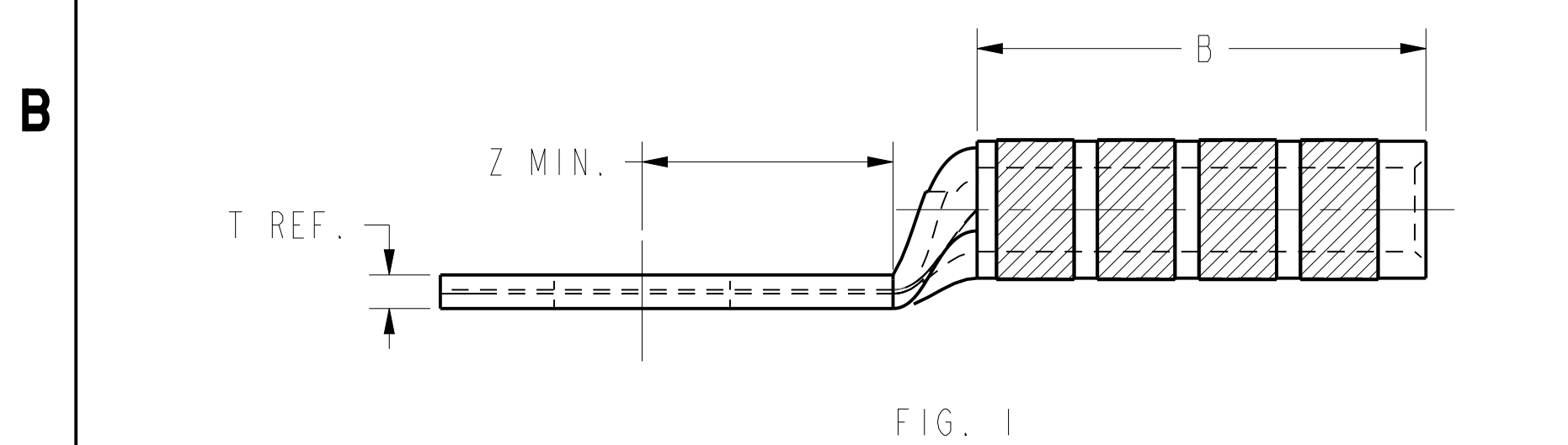
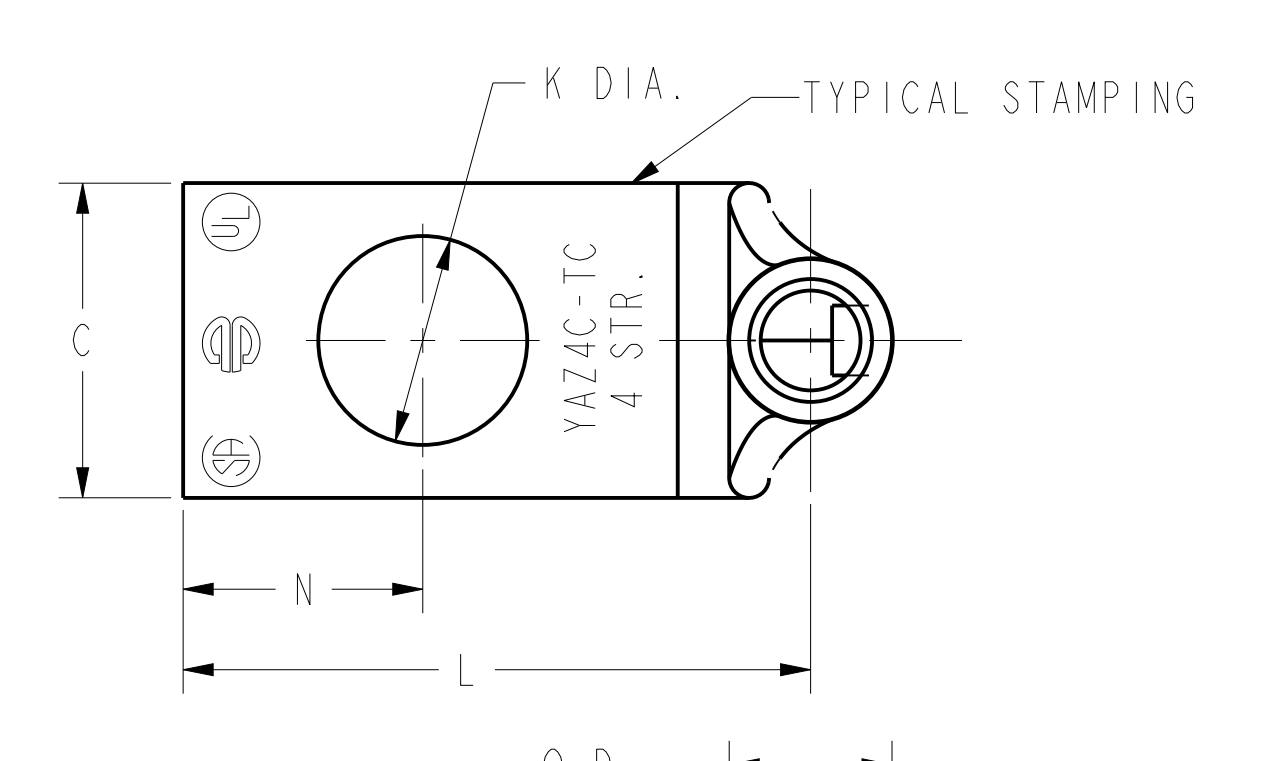
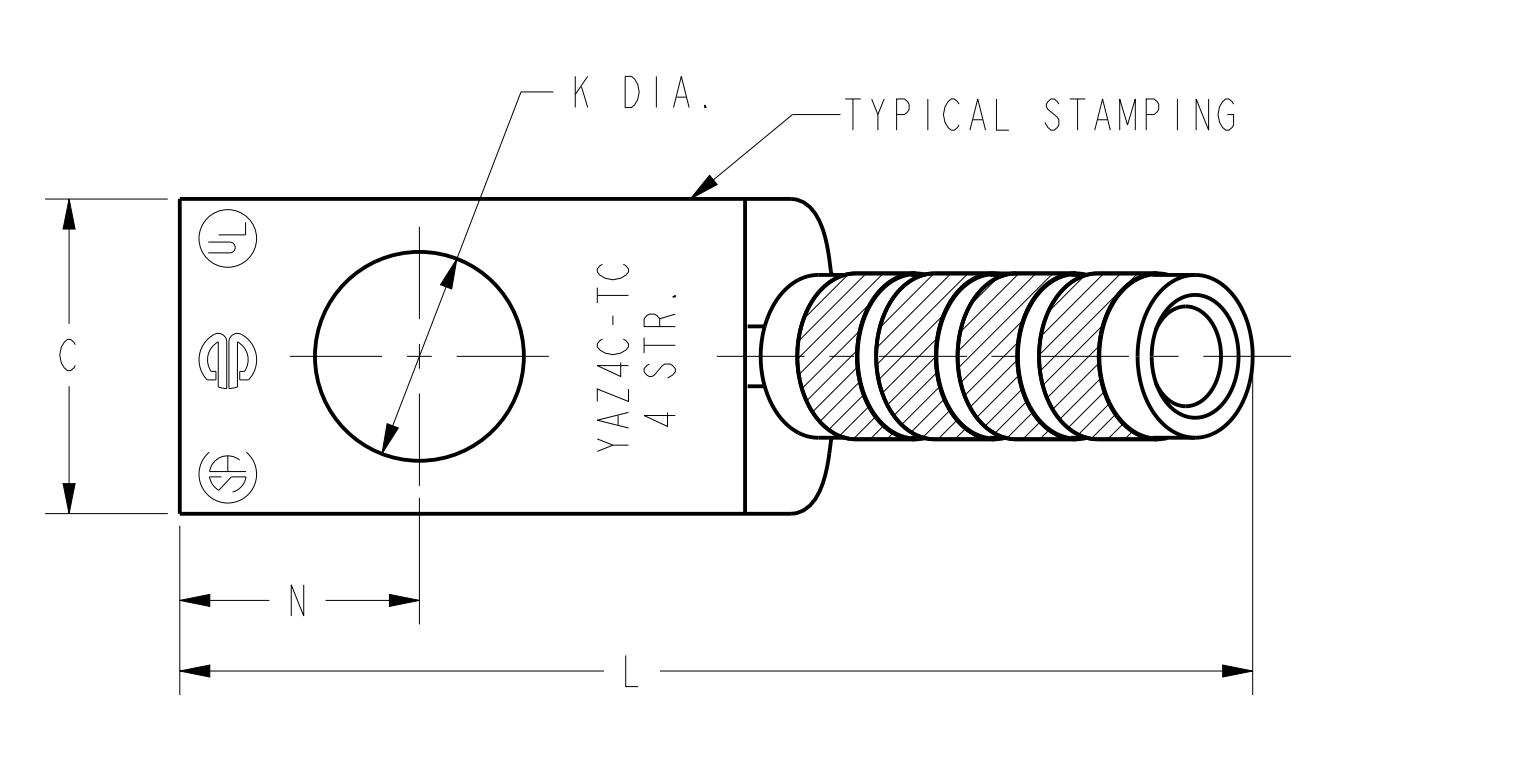
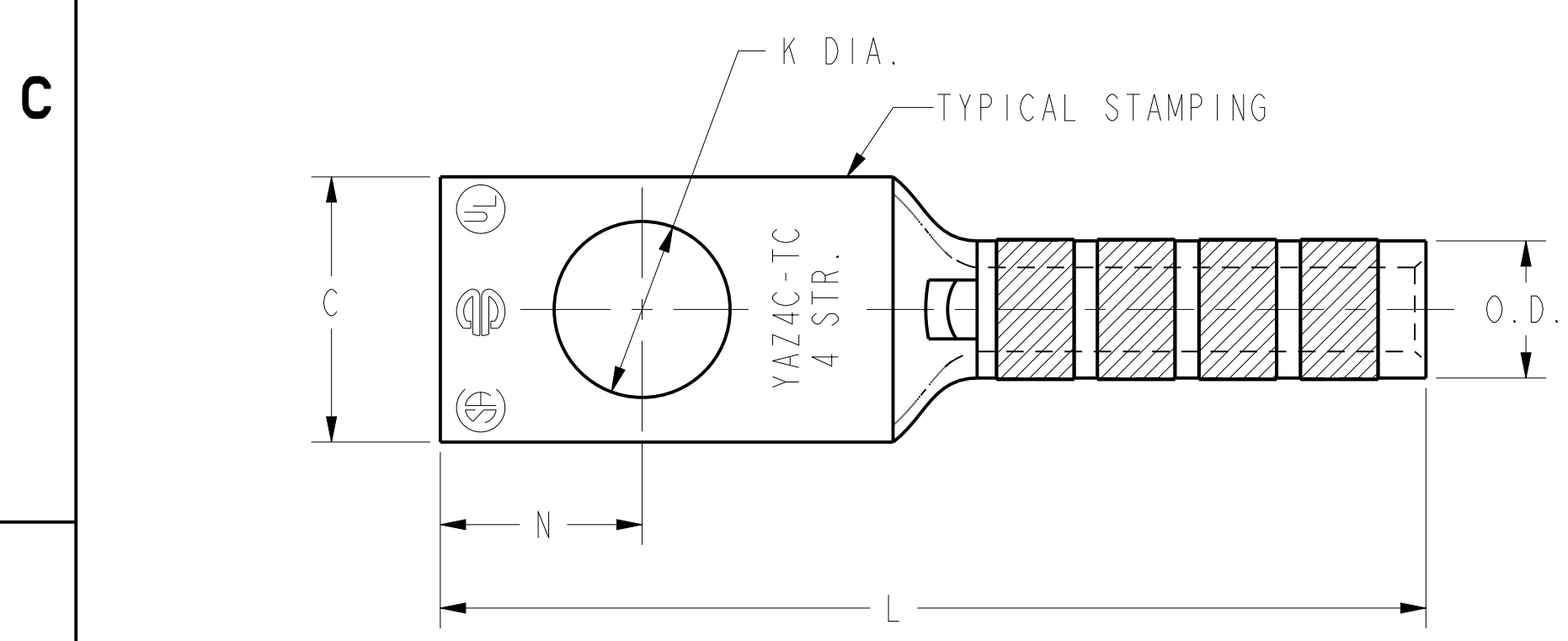


REV	DATE	DESCRIPTION	ECO	BY	C'H'K.
F	05/08/2017 00:00:00 AM	LOGO UPDATE	46692	BK	MB

CATALOG NO.	CONDUCTOR		BOLT SIZE	FIG. NO.	DIMENSIONS								INSTALLATION TOOLING (# CRIMPS)																					
	CODE (AWG)	NAVY			B	C	H REF.	K DIA.	L	N	O.D.	T REF.	Z MIN.	DIE INDEX	COLOR CODE	MECHANICAL			HYDRAULIC				DIELESS (# CRIMPS)	WIRE STRIP LENGTH										
																MD7-34R MD6	OUR840	YIMRTC Y122CMR 6	PAT600 Y500CT	Y34A 8	Y750 Y35, Y39, PAT750	PAT46, Y46 4			Y45 3									
YAZ4CTC10	#4 AWG. [- - - - -]	40	#10 [M5]	1	1.12 [28]	.50 [13]	--	.21 [5]	1.91 [49]	.25 [6]	.34 [9]	.27 [7]	8 OR 346	GRAY	W4CVT W4CRT (2)	W4CVT W4CRT (2)	GRAY (4)	W4CVT W4CRT (2)	A4CR A6CAB (2)	U4CRT U6CABT (2)	U4CRT U6CABT (2)	U4CRT U6CABT (2)	MECHANICAL: MY29-11(1) HYDRAULIC Y644, Y644M PAT644M Y644MBH, Y81KFT, Y4PC834, PAT81KFT, PAT4PC834 (1)	1-3/16										
YAZ4CTC14			1	1/4 [M6]	2		1.23 [31]	.27 [7]	1.84 [47]	.31 [8]					.09 [2]	.33 [8]	8 OR 346	GRAY	W4CVT W4CRT (2)	W4CVT W4CRT (2)	GRAY (4)	W4CVT W4CRT (2)			A4CR A6CAB (2)	U4CRT U6CABT (2)	U4CRT U6CABT (2)	U4CRT U6CABT (2)						
YAZ4CTC1445			2			3					1.53 [39]	.90 [23]	2.22 [56]	.41 [10]					2.00 [51]	.41 [10]	.08 [2]	.42 [11]			8 OR 346	GRAY	W4CVT W4CRT (2)	W4CVT W4CRT (2)	GRAY (4)	W4CVT W4CRT (2)	A4CR A6CAB (2)	U4CRT U6CABT (2)	U4CRT U6CABT (2)	U4CRT U6CABT (2)
YAZ4CTC1490 9			3																								3/8 [M10]	2	1.23 [31]	.41 [10]	2.00 [51]	.41 [10]	.08 [2]	.42 [11]
YAZ4CTC38			1	3	1.50 [38]	1.08 [27]	.34 [9]	.09 [2]	.33 [8]	8 OR 346	GRAY	W4CVT W4CRT (2)	W4CVT W4CRT (2)	GRAY (4)	W4CVT W4CRT (2)	A4CR A6CAB (2)	U4CRT U6CABT (2)	U4CRT U6CABT (2)	U4CRT U6CABT (2)	U4CRT U6CABT (2)														
YAZ4CTC3845			2									3	1.50 [38]	1.08 [27]	.34 [9]	.09 [2]	.33 [8]	8 OR 346	GRAY	W4CVT W4CRT (2)	W4CVT W4CRT (2)	GRAY (4)			W4CVT W4CRT (2)	A4CR A6CAB (2)	U4CRT U6CABT (2)	U4CRT U6CABT (2)	U4CRT U6CABT (2)					
YAZ4CTC3890 9			3																	1.12 [28]	1.50 [38]	1.08 [27]			.34 [9]	.09 [2]	.33 [8]	8 OR 346	GRAY	W4CVT W4CRT (2)	W4CVT W4CRT (2)	GRAY (4)	W4CVT W4CRT (2)	A4CR A6CAB (2)



NOTES:

- MATERIAL: COPPER TUBING.
- FINISH: TIN PLATED
- CATALOG # PT6515 ADAPTOR IS REQUIRED TO USE "U" DIES IN Y45 SERIES TOOLS.
- CATALOG # PUADP-1 ADAPTOR IS REQUIRED TO USE "U" DIES IN Y46 SERIES TOOLS.
- NAVY CABLE SIZE MAY BE OMITTED ON SOME SIZES BECAUSE OF SPACE LIMITATIONS.
- PERMANENT DIE IN TOOLING.
- DIMENSIONS, METRIC WIRE, & METRIC BOLT SIZES IN BRACKETS [] ARE IN MILLIMETERS. DIMENSIONS ARE ROUNDED OFF TO THE NEAREST MILLIMETER, UNLESS OTHERWISE NOTED, AND ARE FOR REFERENCE ONLY.
- FOR USE BY CUSTOMERS THAT HAVE THIS HYPRESS™. NO NEW Y34A HYPRESS™ TOOLS ARE BEING PROCESSED.
- THESE CONNECTORS CANNOT BE INSTALLED WITH Y45 TOOLING.

TO ORDER BURNDY® PRODUCTS CALL		HYLUG™ (ONE HOLE CODE)	
UNITED STATES 1-800-346-4175 (LONDONDERRY, NH)		ITEM NO: NA	CAT. NO: YAZ4C-TC- (TABLE)
CANADA: 1-800-361-6975 (QUEBEC) 1-800-387-6487 (ALL OTHER PROVINCES)		DRAWN BY: D.BOISVERT 02/03/2000	CHECKER: K.MCCARTHY 04/05/2000
FOR PRODUCT INFO: http://www.burndy.com		DSN APPVL: J.MICHAUD 05/04/2000	MFG APPVL: N/A
		QA APPVL: S.BROWN	MKT APPVL: R.ROBICHAU 02/01/2000
		PROD FAM: --	DRAWING NO: REV
		PROJECT #: --	SIZE: SE212356
		DOCUMENT TYPE: Sales	SHEET 7 OF 40
		REL LEVEL: Released	

REV: PE0200

A

B

C

D