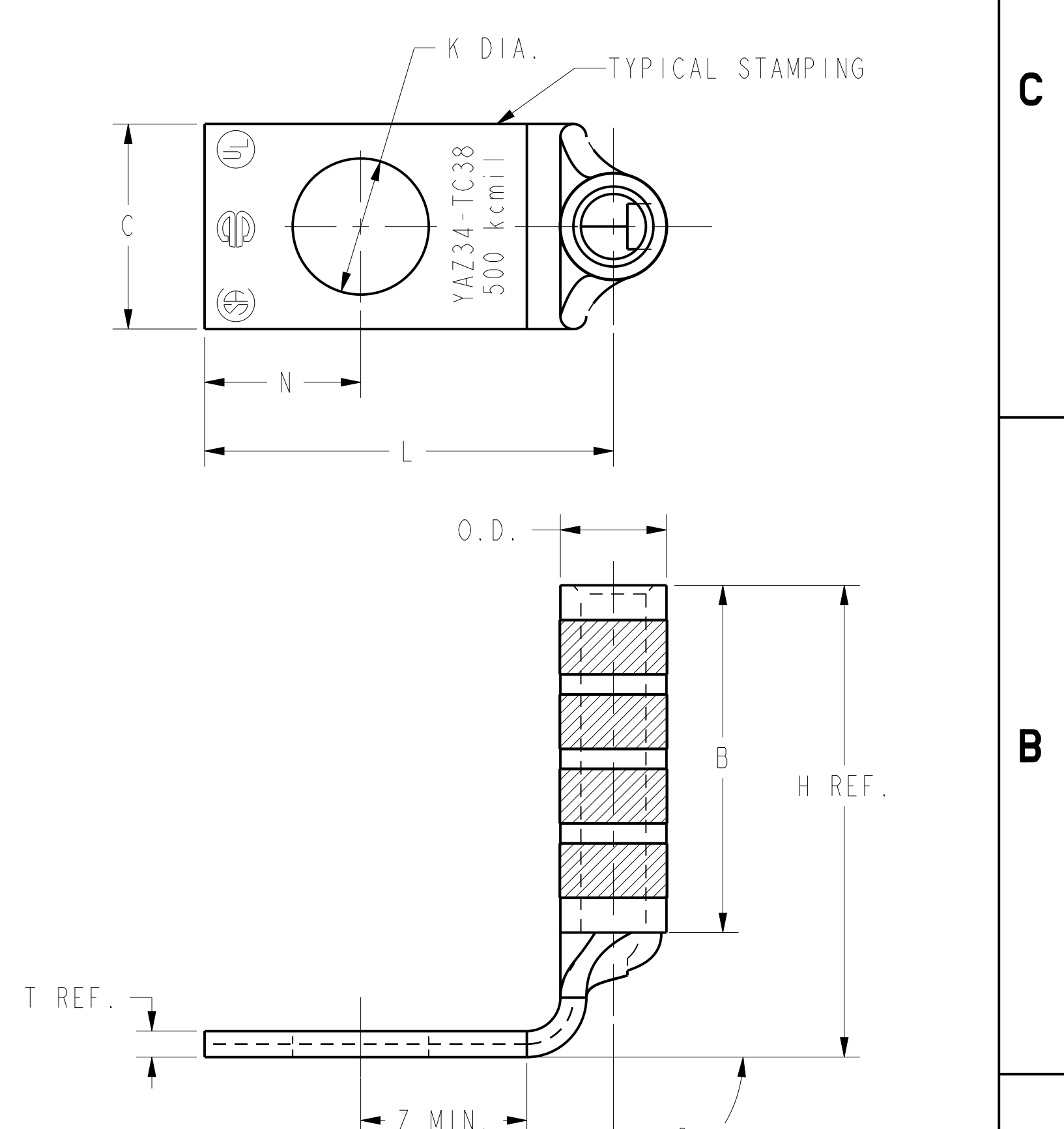
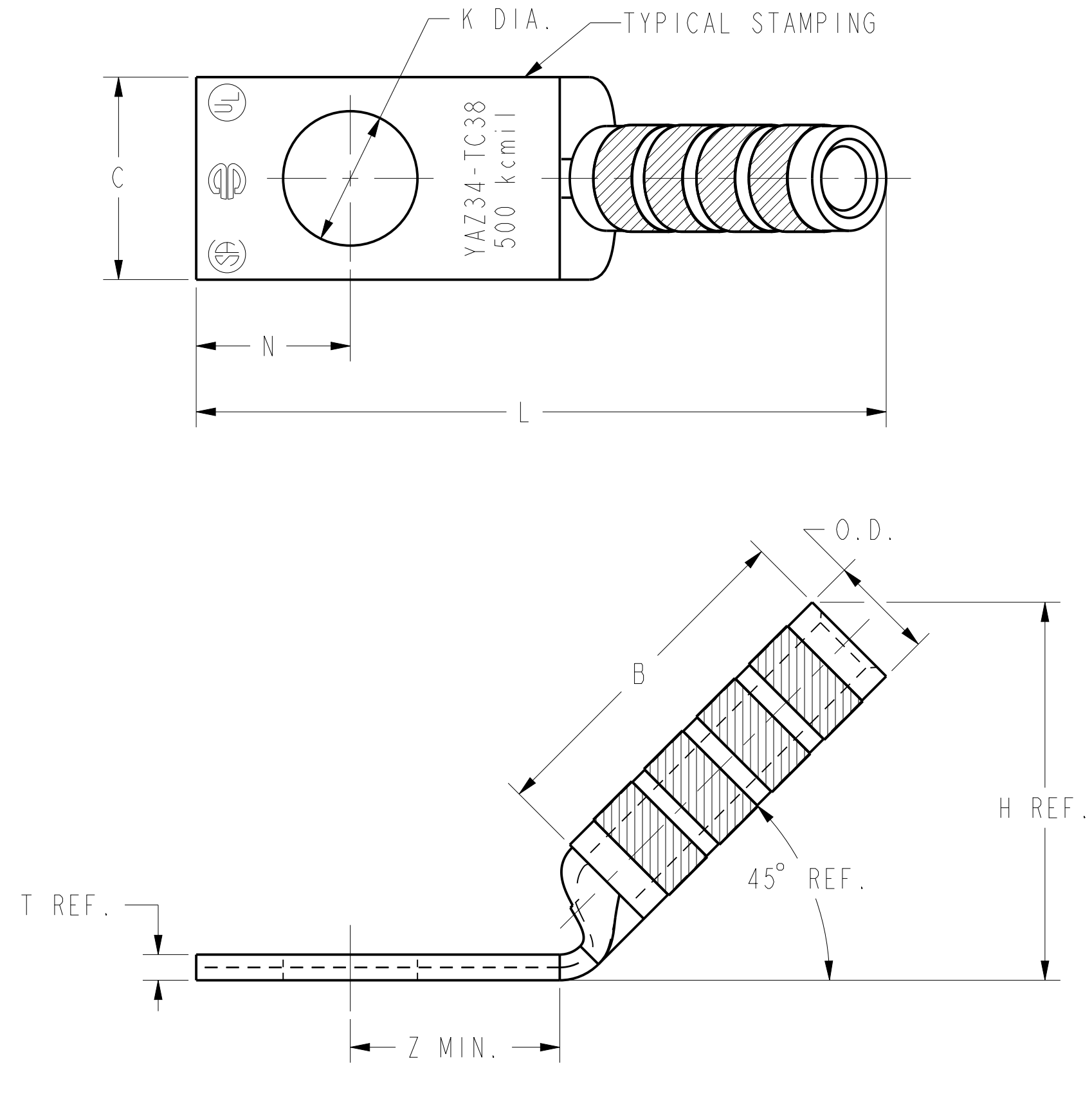
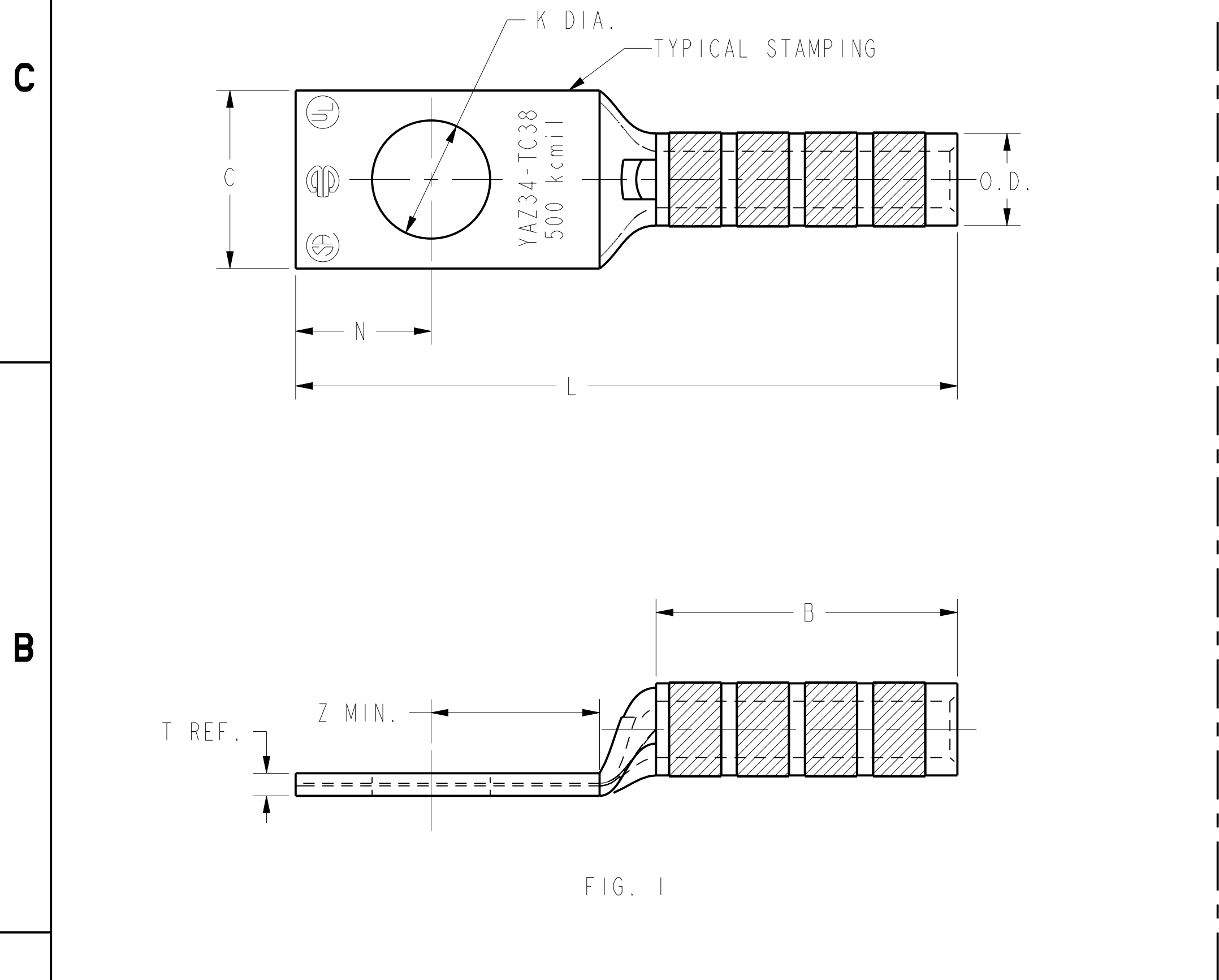


| REV | DATE                   | DESCRIPTION | ECO   | BY | C.H.K. |
|-----|------------------------|-------------|-------|----|--------|
| D   | 05/08/2017 00:00:00 AM | LOGO UPDATE | 46692 | BK | MB     |

| CATALOG. NO. | CONDUCTOR                              |      | BOLT SIZE    | FIG. NO. | DIMENSIONS   |               |               |             |                 |             |              |            | INSTALLATION TOOLING (# CRIMPS) |                 |                 |                 |               |                               |                               |                               |                               |                               |                               |  |                   |                             |              |
|--------------|--|------|--------------|----------|--------------|---------------|---------------|-------------|-----------------|-------------|--------------|------------|---------------------------------|-----------------|-----------------|-----------------|---------------|-------------------------------|-------------------------------|-------------------------------|-------------------------------|-------------------------------|-------------------------------|--|-------------------|-----------------------------|--------------|
|              | CODE (AWG)                             | NAVY |              |          | B ±.08       | C ±.04        | H REF.        | K DIA. ±.02 | L ±.12          | N ±.04      | O.D. ±.01    | T REF.     | Z MIN.                          | DIE INDEX       | COLOR CODE      | MECHANICAL      |               | HYDRAULIC                     |                               |                               |                               |                               |                               | DIELESS (# CRIMPS)   | WIRE STRIP LENGTH |                             |              |
|              |  |      |              |          |              |               |               |             |                 |             |              |            |                                 |                 |                 | MD7-34R         | BCT500 Y500CT | Y34A                          | Y750 Y39, BAT750              | Y46                           | Y45                           | Y48B                          | Y60B                          |  |                   |                             |              |
| YAZ34TC38    | 500 kcmil<br>[240mm <sup>2</sup> STR.] | --   | 3/8<br>[M10] | 1        | 2.25<br>[57] | 1.55<br>[39]  | --            | .40<br>[10] | 3.84<br>[98]    | .41<br>[10] | 1.06<br>[27] | .23<br>[6] | .42<br>[11]                     | 20<br>OR<br>299 | BROWN           | W34RT<br>(4)    | W34RT<br>(4)  | A34R<br>(4)                   | U34RT<br>(4)<br>U31ART<br>(2) | U34RT<br>(4)<br>U31ART<br>(2) | U34RT<br>(4)<br>U31ART<br>(2) | C34R<br>(2)<br>C31AR<br>(1)   | L34RT<br>(2)                  | HYDRAULIC<br>Y644, Y644M<br>BAT644M<br>Y644MBH,<br>Y1000<br>Y1000BH<br>(1) | 2-5/16            |                             |              |
| YAZ34TC3845  |  |      |              | 2        | 2.94<br>[75] | 3.41<br>[87]  | 3.49<br>[87]  |             | 1.53<br>[39]    |             |              |            |                                 | 4.10<br>[104]   | 4.10<br>[104]   | 20<br>OR<br>299 | BROWN         | W34RT<br>(4)                  | W34RT<br>(4)                  | A34R<br>(4)                   | U34RT<br>(4)<br>U31ART<br>(2) | U34RT<br>(4)<br>U31ART<br>(2) | U34RT<br>(4)<br>U31ART<br>(2) |  |                   | C34R<br>(2)<br>C31AR<br>(1) | L34RT<br>(2) |
| YAZ34TC3890  |  |      |              | 3        | 3.41<br>[87] | 4.10<br>[104] | 4.10<br>[104] |             | 20<br>OR<br>299 |             |              |            |                                 | BROWN           | W34RT<br>(4)    | W34RT<br>(4)    | A34R<br>(4)   | U34RT<br>(4)<br>U31ART<br>(2) | U34RT<br>(4)<br>U31ART<br>(2) | U34RT<br>(4)<br>U31ART<br>(2) | C34R<br>(2)<br>C31AR<br>(1)   | L34RT<br>(2)                  |                               |  |                   |                             |              |
| YAZ34TC12    | 500 kcmil<br>[240mm <sup>2</sup> STR.] | --   | 1/2<br>[M12] | 1        | 2.25<br>[57] | 1.55<br>[39]  | --            | .52<br>[13] | 4.10<br>[104]   | .53<br>[13] | 1.06<br>[27] | .23<br>[6] | .55<br>[14]                     | 20<br>OR<br>299 | BROWN           | W34RT<br>(4)    | W34RT<br>(4)  | A34R<br>(4)                   | U34RT<br>(4)<br>U31ART<br>(2) | U34RT<br>(4)<br>U31ART<br>(2) | U34RT<br>(4)<br>U31ART<br>(2) | C34R<br>(2)<br>C31AR<br>(1)   | L34RT<br>(2)                  |  |                   |                             |              |
| YAZ34TC1245  |  |      |              | 2        | 2.94<br>[75] | 3.41<br>[87]  | 3.74<br>[95]  |             | 4.10<br>[104]   |             |              |            |                                 | 4.10<br>[104]   | 20<br>OR<br>299 | BROWN           | W34RT<br>(4)  | W34RT<br>(4)                  | A34R<br>(4)                   | U34RT<br>(4)<br>U31ART<br>(2) | U34RT<br>(4)<br>U31ART<br>(2) | U34RT<br>(4)<br>U31ART<br>(2) | C34R<br>(2)<br>C31AR<br>(1)   |  |                   | L34RT<br>(2)                |              |
| YAZ34TC1290  |  |      |              | 3        | 3.41<br>[87] | 4.10<br>[104] | 4.10<br>[104] |             | 20<br>OR<br>299 |             |              |            |                                 | BROWN           | W34RT<br>(4)    | W34RT<br>(4)    | A34R<br>(4)   | U34RT<br>(4)<br>U31ART<br>(2) | U34RT<br>(4)<br>U31ART<br>(2) | U34RT<br>(4)<br>U31ART<br>(2) | C34R<br>(2)<br>C31AR<br>(1)   | L34RT<br>(2)                  |                               |  |                   |                             |              |



- NOTES:
- MATERIAL: COPPER TUBING.
  - FINISH: TIN PLATED
  - CATALOG # PT6515 ADAPTOR IS REQUIRED TO USE "U" DIES IN Y45 SERIES TOOLS.
  - CATALOG # PUADP-1 ADAPTOR IS REQUIRED TO USE "U" DIES IN Y46 SERIES TOOLS.
  - DIMENSIONS, METRIC WIRE, & METRIC BOLT SIZES IN BRACKETS [ ] ARE IN MILLIMETERS. DIMENSIONS ARE ROUNDED OFF TO THE NEAREST MILLIMETER, UNLESS OTHERWISE NOTED, AND ARE FOR REFERENCE ONLY.
  - FOR USE BY CUSTOMERS THAT HAVE THIS HYPRESS™. NO NEW Y34A HYPRESS™ TOOLS ARE BEING PROCESSED.

|   |  |                                  |                                 |
|---|--|----------------------------------|---------------------------------|
| TO ORDER BURNDY® PRODUCTS CALL  |  | HYLUG™ (ONE HOLE CODE)           |                                 |
| UNITED STATES<br>1-800-346-4175 (LONDONDERRY, NH)                           |  | ITEM NO: NA                      | CAT. NO: YAZ34-TC- (TABLE)      |
| CANADA:<br>1-800-361-6975 (QUEBEC)<br>1-800-387-6487 (ALL OTHER PROVINCES)  |  | DRAWN BY: D. BOISVERT 02/03/2000 | CHECKER: K. MCCARTHY 04/05/2000 |
| FOR PRODUCT INFO: <a href="http://www.burndy.com">http://www.burndy.com</a> |  | DSN APPVL: J.MICHAUD 05/04/2000  | MFG APPVL: N/A --               |
|   |  | GA APPVL: S.BROWN --             | MKT APPVL: --                   |
|   |  | PROD FAM: --                     | SCALE: NTS                      |
|   |  | PROJECT #: --                    | DRAWING NO: SE212356            |
|   |  | DOCUMENT TYPE: Sales             | REV: D                          |
|   |  | REL LEVEL: Released              | SHEET 26 OF 40                  |

REV: PEO200