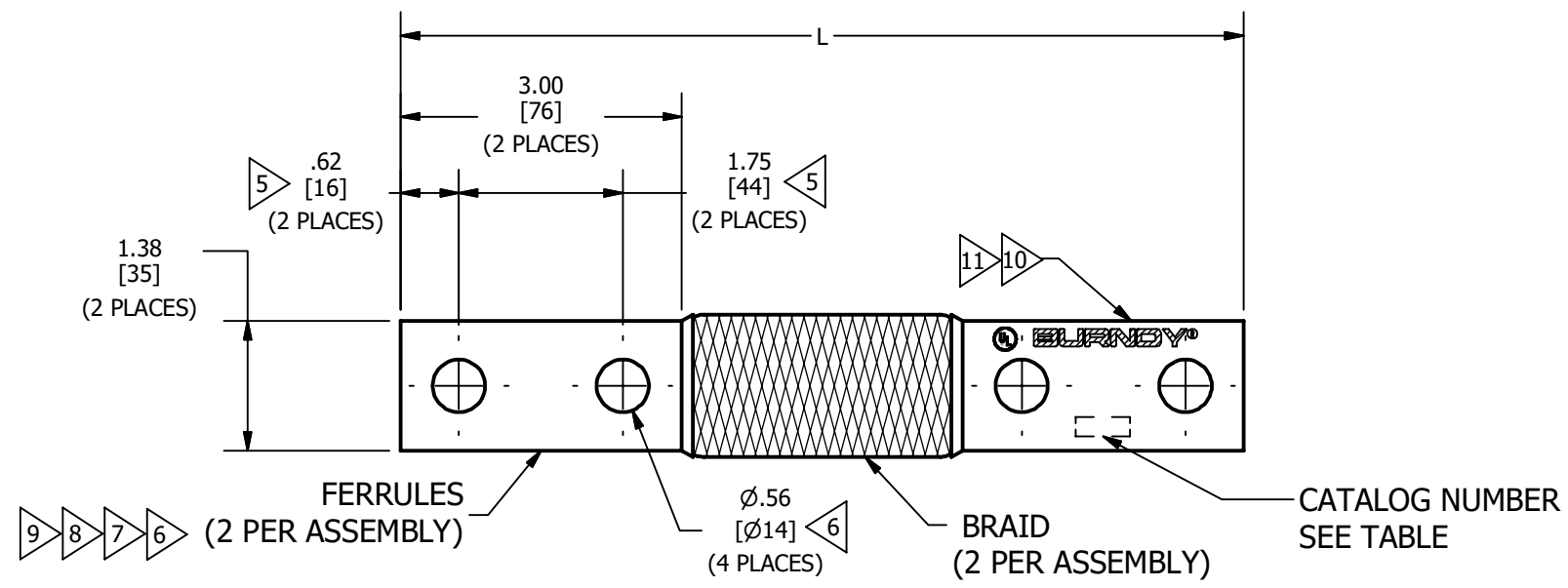


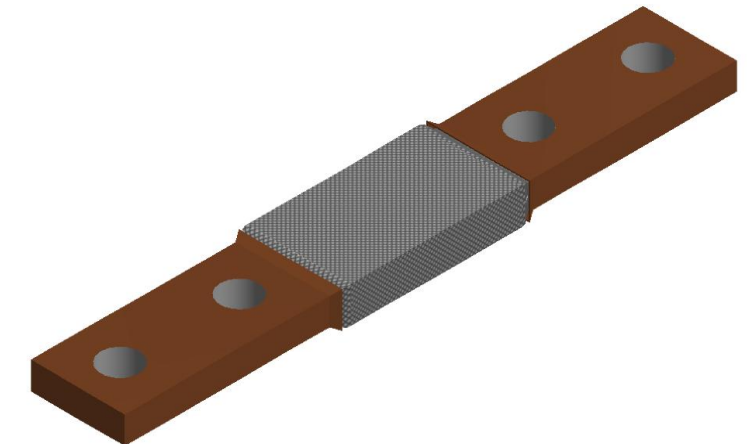
TABLE	
CATALOG NO.	L
B2F9N	9.00 [229]
B2F10N	10.00 [254]
B2F12N	12.00 [305]
B2F13N	13.00 [330]
B2F14N	14.00 [356]
B2F15N	15.00 [381]
B2F16N	16.00 [406]
B2F18N	18.00 [457]
B2F20N	20.00 [508]
B2F22N	22.00 [559]
B2F24N	24.00 [610]
B2F30N	30.00 [762]
B2F32N	32.00 [813]
B2F36N	36.00 [914]
B2F40N	40.00 [1016]
B2F42N	42.00 [1067]
B2F48N	48.00 [1219]
B2F106N	106.00 [2692]

REV	DATE	DESCRIPTION	ECO	BY	C'HK.
B	01/22/2020	REDRAWN IN INVENTOR & CATALOG NOS. UPADATED	52826	WP	YR



NOTES:

- MATERIAL: FERRULES -COPPER
BRAID- TINNED COPPER
- FINISH: UNPLATED
- APPROXIMATE AMP RATING: INDOOR= 600, OUTDOOR =720.THIS RATING MAY VARY WITH AMBIENT CONDITIONS, ORIENTATION OF THE BRAID AND OTHER SERVICE CONDITIONS.
- DIMENSIONS IN BRACKETS [] ARE IN MILLIMETERS ROUNDED OFF TO THE NEAREST MILLIMETER, UNLESS OTHERWISE NOTED, AND ARE FOR REFERENCE ONLY.
- ADD SUFFIX LETTER "U" AFTER "N" FOR UNDRILLED VERSIONS. EXAMPLES: B2F9NU OR B2FNUTN.
- SUFFIX "NK" DENOTES NICKEL PLATED FERRULES.
- SUFFIX "SV" DENOTES SILVER PLATED FERRULES.
- SUFFIX "TN" DENOTES TIN PLATED FERRULES.
- SUFFIX "W" DENOTES HOT-TIN DIPPED FERRULES.
- ALL SIZES ARE LISTED TO UL 467 GROUNDING & BONDING EQUIPMENT STANDARDS.
- BRAID SIZES MAY BE DESIGNATED BY SUFFIXES REPRESENTING VARIATIONS IN LENGTH, QUANTITY & SIZE OF MOUNTING HOLES,PAD SIZE & FINISH. (REF.NOTES 10)



TO ORDER BURNDY® PRODUCTS CALL		BRAID, FLEXIBLE	
UNITED STATES 1-800-346-4175 (LONDONDERRY, NH)		ITEM NO: NA	
CANADA: 1-800-361-6975 (QUEBEC) 1-800-387-6487 (ALL OTHER PROVINCES)		CAT. NO: B2F--N (TABLE)	
FOR PRODUCT INFO: http://www.burndy.com		DRAWN BY: P.LAPONIUS 05/02/2000	
		CHECKER: B.MICHAUD 05/04/2000	
		DSN APRVL: J.MICHAUD 05/04/2000	
		MFG APRVL: NA	
		QA APRVL: J.BRODEUR 04/05/2000	
		MKT APRVL: D.HAMILTON 04/05/2000	
		PROJ #: --	
		SIZE	
		SE212512-01	
		B	
		SHEET 1 OF 1	
		REV B	