

**\*\* TABLE 1 \*\***

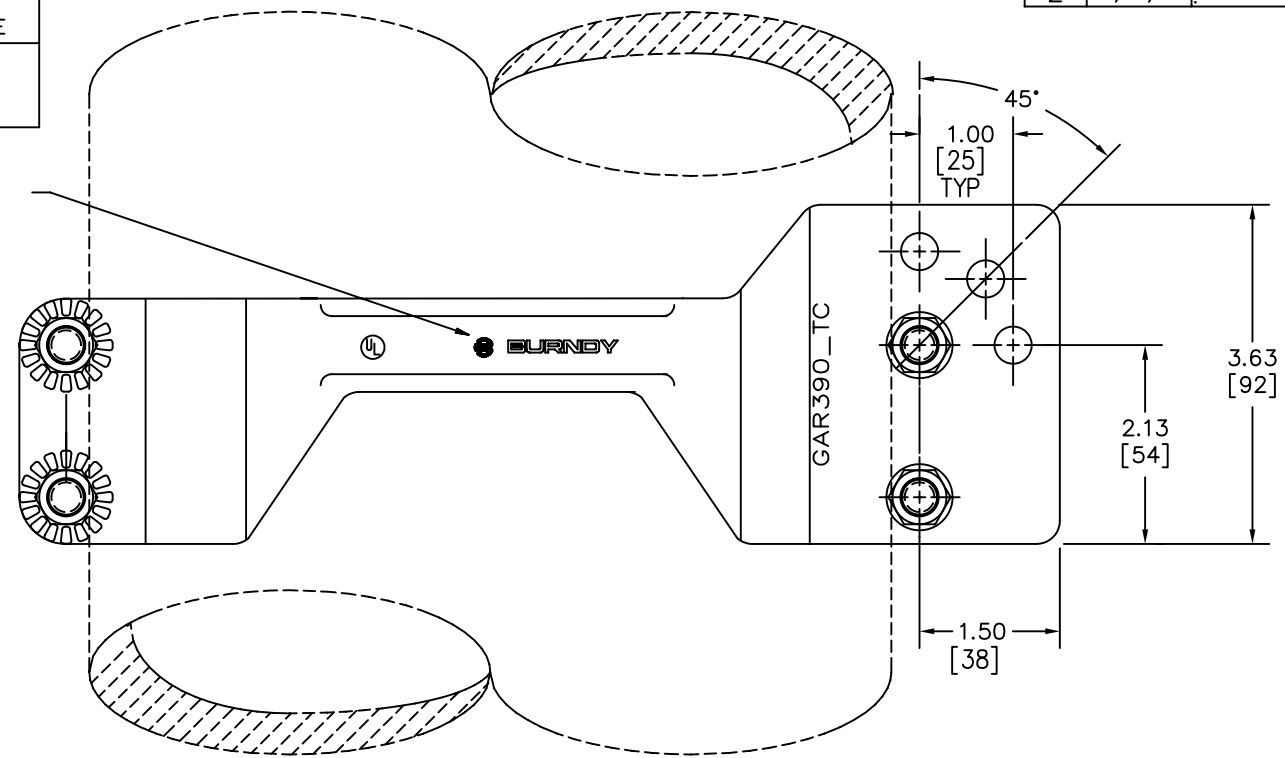
CATALOG NUMBER	ACCOMMODATES			H	J	W	RECOMMENDED TIGHTENING TORQUE
	I.P.S.	O.D. SIZE					
GAR3907TC	8"	8.62	[219]	10.00	[254]	11.25	[286]
GAR3908TC	10"	10.75	[273]	12.00	[305]	13.25	[337]
GAR3909TC	12"	12.75	[324]	14.00	[355]	15.25	[387]

REV.	DATE	DESCRIPTION	ECO	BY	C'K'D.
2	12/02/93	ADD NOTE 7 & METRIC EQUIVALENT	1566	NSP	JLM

**NOTES:**

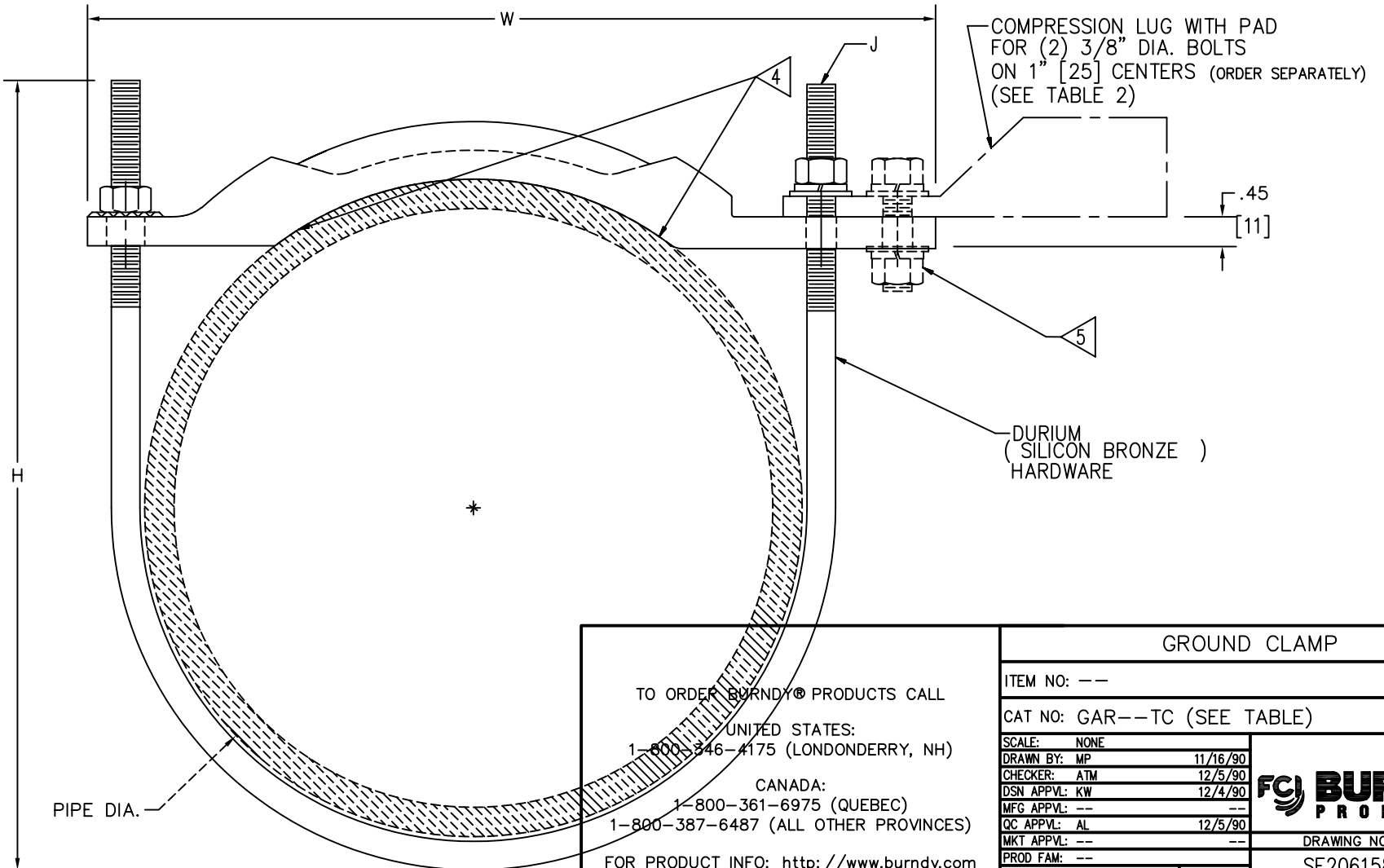
- BURNDY TYPE YA-2TC38, YA-L-2TC38 AND YAV-L-2TC38-FX. ALL -FX, -45, -90 VARIATIONS. (YA39L-2NT38 MAX. SIZE ACCOMMODATED)
- USE CATALOG NO. PT6515 ADAPTER WHEN USING "U" DIES IN Y45 TOOL.
- USE CATALOG NO. P-UADP ADAPTER WHEN USING "U" DIES IN Y46 TOOL.
- PREPARE PIPE SURFACE TO VIRGIN METAL SHINE UNDER BRASS SADDLE CONTACT AREA. APPLY CLAMP SADDLE TO SHINING METAL SURFACE TIGHTENING TORQUE 240 IN\*LBS. [27.1Nm] SEAL SADDLE PERIMETER BY APPLING OXIDE INHIBITING COMPOUND, BURNDY PEN-E OR EQUIVALENT.
- DURIUM (SILICON BRONZE) HARDWARE KIT (CAT # TMH 289). (ORDERED SEPARATELY) INCL: (1) 38x125 HEB  
(1) 38C HEN  
(1) 38 SW  
(2) 38 FW
- ADD SUFFIX-TNET TO OBTAIN TIN PLATED CONNECTOR (EX GAR3907TC-TNET). THESE CONNECTORS INCLUDE TIN PLATED HARDWARE KITS FOR MOUNTING TERMINALS. EXTRA KITS MAY BE ORDERED BY CAT NO. TMH289ET.
- DIMENSIONS IN BRACKETS [ ] ARE IN MILLIMETERE ROUNDED OFF TO THE NEAREST MILLIMETER, UNLESS OTHERWISE NOTED, AND ARE FOR REFERENCE ONLY.
- UL 467 LISTED FILE NO. E9999. ACCEPTABLE FOR DIRECT BURIAL.

TYPICAL LETTERING



**\*\* TABLE 2 \*\***

CONNECTOR TERMINAL GUIDE			INSTALLATION GUIDE TOOLS AND DIES											
GROUND CONDUCTOR (CODE) AWG	GROUND CONDUCTOR (CODE) METRIC	CATALOG NO.	BURNDY DIE INDEX	COLOR CODE	T AND B DIE CODES		BURNDY HYPRESS™ TOOLS, DIES, (*)CRIMPS					DIELESS	*	
					15 TON TBM 15	12 TON TBM 12	Y750 Y35 Y39	*	Y45	*	Y46			*
#10-14	2.5-4mm² STR	YA10-2TC38	-	-	-	-	-	-	-	-	-	-	Y8MRB-1	1
#8SOL/STR	N/A	YA8CL-2TC38	49	RED	21	21	U8CRT	1	U8CRT	1	U8CRT	1	Y8MRB-1	1
#6 STR	N/A	YA6CL-2TC38	7	BLUE	24	24	U5CRT	1	U5CRT	1	U5CRT	1		
#4 STR	N/A	YA4CL-2TC38	8	GREY	29	29	U4CRT	1	U4CRT	1	U4CRT	1		
#3 STR / 2 SOL	35mm² STR	YA3CL-2TC38	9	WHITE			U3CRT	1	U3CRT	1	U3CRT	1		
#2 STR	35mm² STR	YA2CL-2TC38	10	BROWN	33	33	U2CRT	1	U2CRT	1	U2CRT	1		
#1 STR	N/A	YA1CL-2TC38	11	GREEN	37	37	U1CRT	1	U1CRT	1	U1CRT	1		
1/0 STR	N/A	YA25L-2TC38	12	PINK	42H	42	U25RT	1	U25RT	1	U25RT	1	HYPRESS™	
2/0 STR	70mm² STR	YA26L-2TC38	13	BLACK	45	45	U26RT	1	U26RT	1	U26RT	1	Y644M	
3/0 STR	N/A	YA27L-2TC38	14	ORANGE	50	50	U27RT	1	U27RT	1	U27RT	1	1-CRIMP	
4/0 STR	N/A	YA28L-2TC38	15	PURPLE	54H	54	U28RT	1	U28RT	1	U28RT	1		
250kcmil	N/A	YA29L-2TC38	16	YELLOW	62	62	U29RT	1	U29RT	1	U29RT	1		
300kcmil	150mm² STR	YA30L-2TC38	17	WHITE	66	66H	U30RT	2	U30RT	2	U30RT	2		
350kcmil	185mm² STR	YA31L-2TC38	18	RED	71H	71H	U31RT	2	U31RT	2	U31RT	2		
400kcmil	N/A	YA32L-2TC38	19	BLUE	76	76H	U32RT	2	U32RT	2	U32RT	2		
500kcmil	N/A	YA34L-2TC38	20	BROWN	87H	87H	U34RT	2	U34RT	2	U34RT	2		
600kcmil	300mm² STR	YA36L-2TC38	22	GREEN	94H	94H	U39RT	2	U36RT	2	U36RT	2		
700kcmil	N/A	YA38L-2TC38	400	PINK	99H	99H	U38RT	2	U38RT	2	U38RT	2		
750kcmil	400mm² STR	YA39L-2NT38	24	BLACK	106H	106H	U39RT	2	U39RT	2	U39RT	2		



TO ORDER BURNDY® PRODUCTS CALL  
 UNITED STATES:  
 1-800-346-4175 (LONDONDERRY, NH)  
 CANADA:  
 1-800-361-6975 (QUEBEC)  
 1-800-387-6487 (ALL OTHER PROVINCES)  
 FOR PRODUCT INFO: <http://www.burndy.com>

GROUND CLAMP	
ITEM NO: ---	
CAT NO: GAR--TC (SEE TABLE)	
SCALE: NONE	
DRAWN BY: MP 11/16/90	
CHECKER: ATM 12/5/90	
DSN APPVL: KW 12/4/90	
MFG APPVL: ---	
QC APPVL: AL 12/5/90	
MKT APPVL: ---	
PROD FAM: ---	
PROJECT #: ---	
DOCUMENT TYPE: Sales	
REL LEVEL: AutoCAD	



DRAWING NO	REV
SE206158	2
SHEET 2 OF 2	