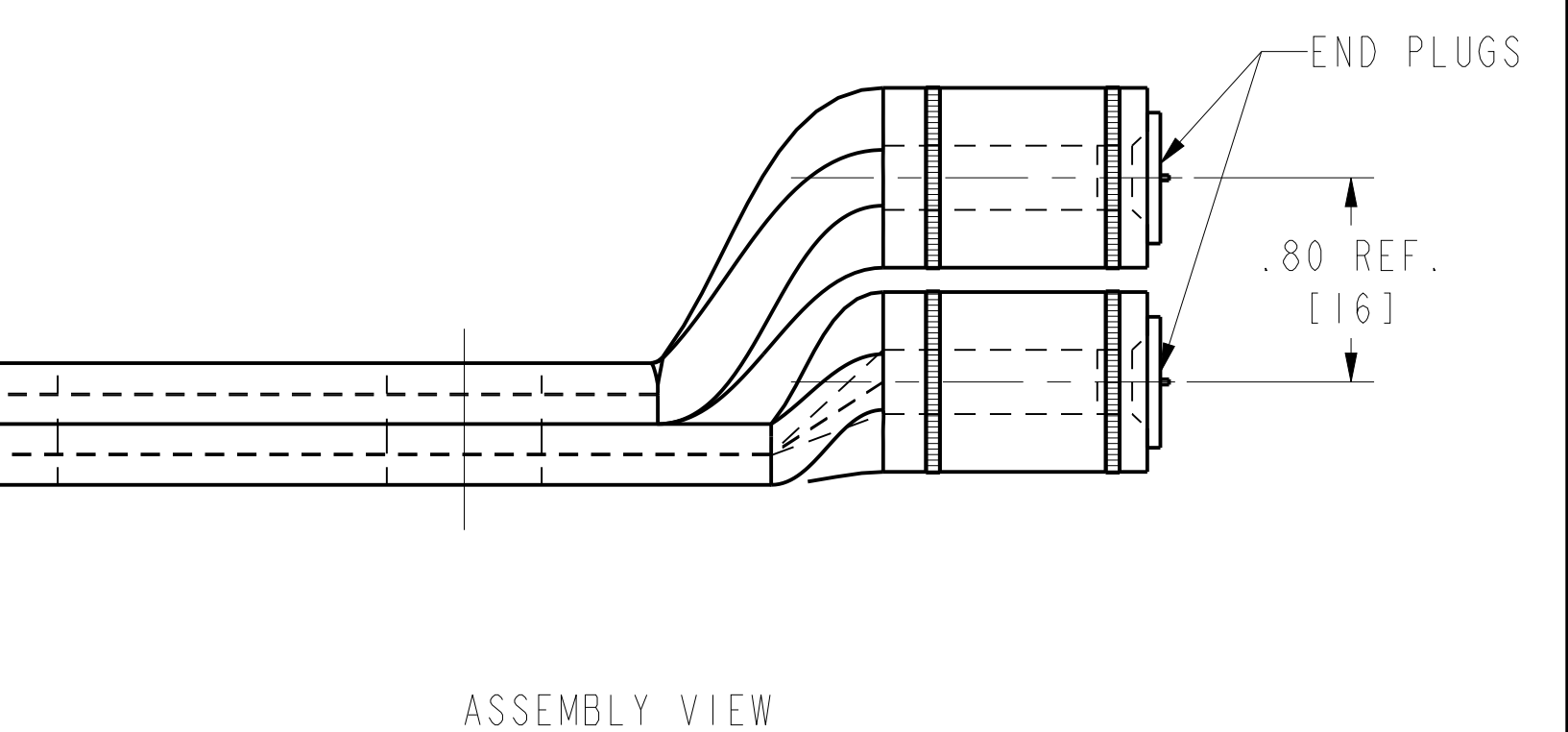
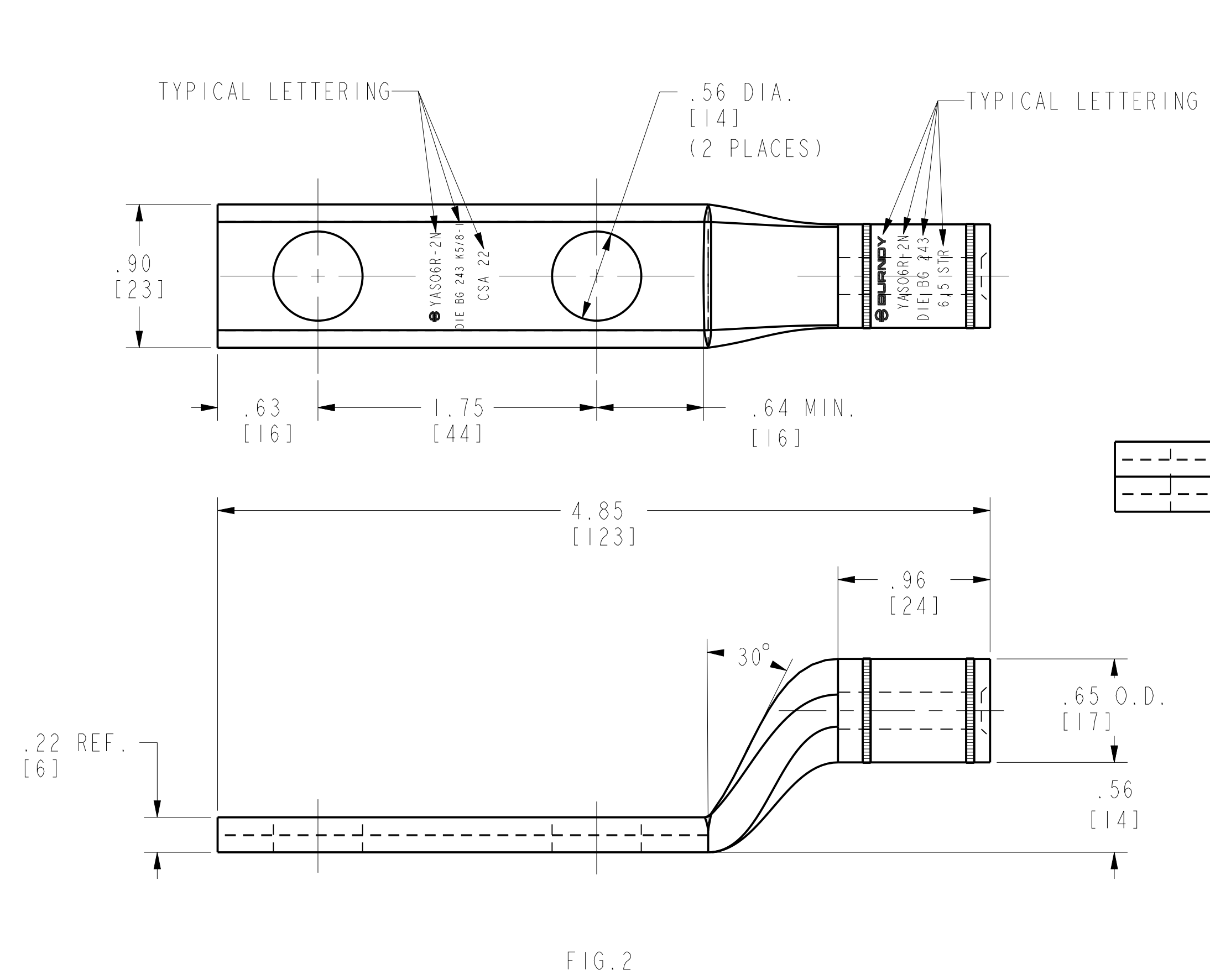
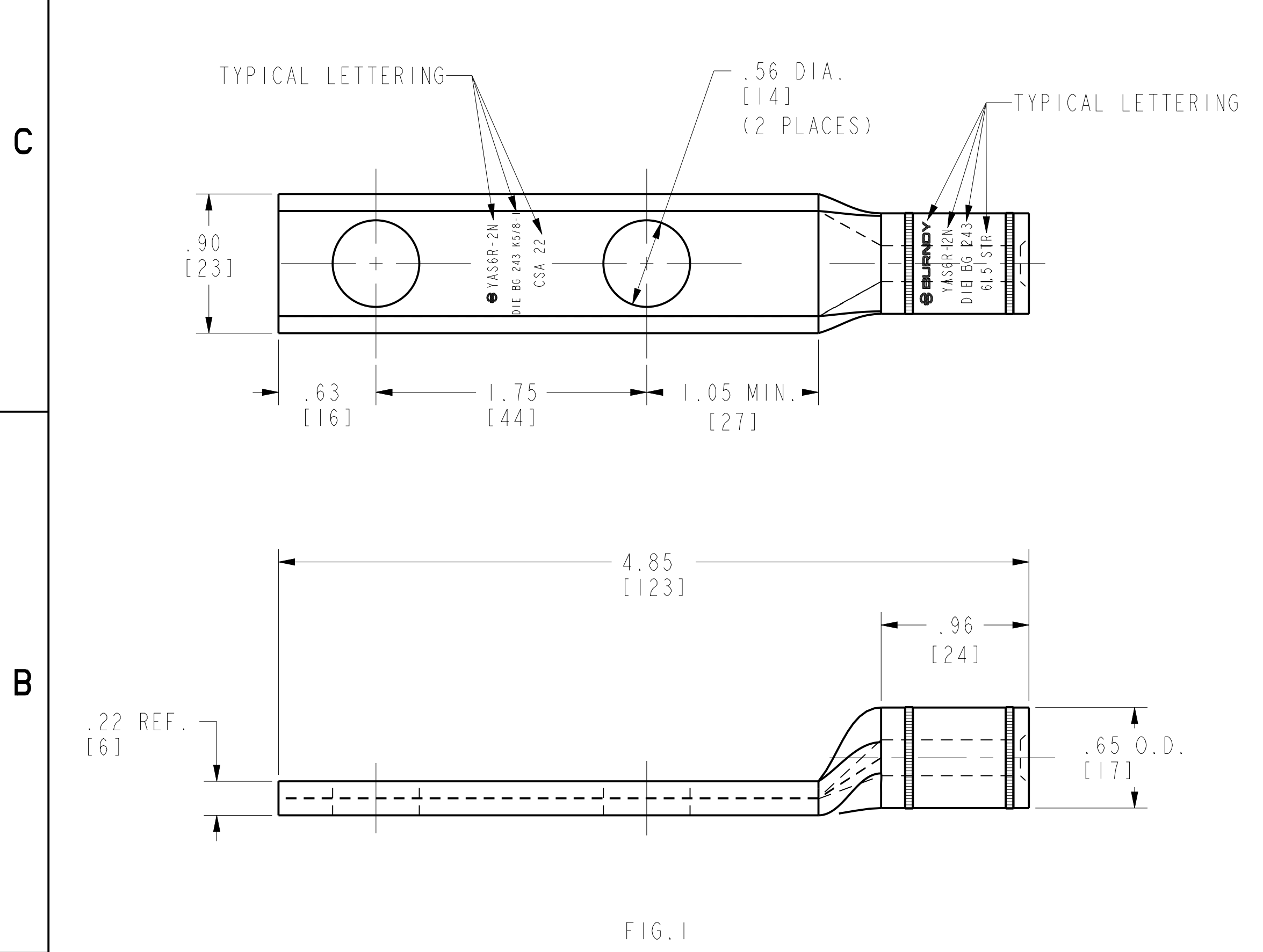


REV	DATE	DESCRIPTION	ECO	BY	C'H'K.
A	2021-05-05 01:00:00 EDT	REDRAWN TO CREO	210506007890	YR	SS

CONDUCTOR CU & AL	CATALOG NO.	FIG. NO.	INSTALLATION TOOLING TOOL, DIE & NO. OF CRIMPS										COLOR CODED END PLUG	DIE INDEX	WIRE STRIP LENGTH
			Y35	Y39	Y750	Y45	Y46	Y48B	Y60BHU	MD6	OUR840				
6(7STR)-5(7STR) CU, AL 6(6/1) ACSR	YAS6R2N	1	U-BG U243	U-BG U243	U-BG U243	U-BG U243	U-BG U243	----	----	PERMBG W-BG (1)	X-BG X-NBG (4)	BLUE	BG,243 K5/8-1 CSA22	1-3/32"	
	YASO6R2N	2	(1)	(1)	(1)	(1)									
4(7STR)-3(7STR) AL, CU 4(6/1) ACSR	YAS4R2N	1	U-BG U243	U-BG U243	U-BG U243	U-BG U243	U-BG U243	----	----	PERMBG W-BG (1)	X-BG X-NBG (4)	ORANGE	BG,243 K5/8-1 CSA22	1-3/32"	
	YASO4R2N	2	(1)	(1)	(1)	(1)									
2(7STR)-1(19STR) AL, CU 2(6/1) ACSR	YAS1R2N	1	U-BG U243	U-BG U243	U-BG U243	U-BG U243	U-BG U243	----	----	PERMBG W-BG (1)	X-BG X-NBG (4)	RED	BG,243 K5/8-1 CSA22	1-3/32"	
	YASO1R2N	2	(1)	(1)	(1)	(1)									
1/0(19STR) AL, CU 1/0(6/1) ACSR	YAS25R2N	1	U-BG U243	U-BG U243	U-BG U243	U-BG U243	U-BG U243	----	----	BG(3) W-BG (1)	X-BG X-NBG (4)	YELLOW	BG,243 K5/8-1 CSA22	1-3/32"	
	YASO25R2N	2	(1)	(1)	(1)	(1)									



NOTES:

- MATERIAL: ALUMINUM TUBING.
- FINISH: TIN PLATING IS OPTIONAL, ADD -TN TO CAT. NO.
- DIMENSIONS IN BRACKETS [ ] ARE IN MILLIMETERS ROUNDED OFF TO THE NEAREST MILLIMETER, UNLESS OTHERWISE NOTED, AND ARE FOR REFERENCE ONLY.
- PT6515 ADAPTOR IS REQUIRED FOR U-DIES IN Y45.
- PUADP-1 ADAPTOR IS REQUIRED FOR U-DIES IN Y46.
- OPTIONAL SEALED BARREL: ADD '-P' TO CATALOG NO.
- TERMINALS ARE PREFILLED WITH PENETROX™ A13 AND SEALED.

TO ORDER BURNDY® PRODUCTS CALL		STACKING HYLUG™	
UNITED STATES 1-800-346-4175 (LONDONDERRY, NH)		ITEM NO: N/A	CAT. NO: YAS-R-2N, YASO-R-2N (TABLE)
CANADA: 1-800-361-6975 (QUEBEC) 1-800-387-6487 (ALL OTHER PROVINCES)		DRAWN BY: J.MICHAUD 12/09/94	CHECKER: J.MICHAUD 12/09/94
FOR PRODUCT INFO: <a href="http://www.burndy.com">http://www.burndy.com</a>		DSN APPVL: C.PALAGI 12/09/94	MFG APPVL: N/A
		GA APPVL: D.VARIO 12/09/94	MKT APPVL: D.HAMILTON 12/09/94
		PROD FAM: CM&R Compression	DRAWING NO: SE208417
		PROJECT #: --	SCALE: 1:2
		DOCUMENT TYPE: Sales	SHEET 1 OF 4
		REL LEVEL: Released	REV: A

REV: PEO200

REV	DATE	DESCRIPTION	ECO	BY	CHK.
A	2021-05-05 01:00:00 EDT	REDRAWN TO CREO	210506007890	YR	SS

CONDUCTOR CU & AL	CATALOG NO.	FIG. NO.	INSTALLATION TOOLING TOOL, DIE & NO. OF CRIMPS									COLOR CODED END PLUG	DIE INDEX	WIRE STRIP LENGTH
			Y35	Y39	Y750	Y45	Y46	Y48B	Y60BHU	MD6	OUR840			
2/0(19STR) AL, CU 2/0(6/1) ACSR	YAS26R2N	1	UK840(2) U249(1)	UK840(2) U249(1)	UK840(2) U249(1)	UK840(2) U249(1)	UK840(2) U249(1)	----	----	W249 WK840 (4)	----	GRAY	249 840 CSA24	1-19/32"
	YASO26R2N	2												
3/0(19STR) AL, CU 3/0(6/1) ACSR	YAS27R2N	1	UK840(2) U249(1)	UK840(2) U249(1)	UK840(2) U249(1)	UK840(2) U249(1)	UK840(2) U249(1)	----	----	W249 WK840 (4)	----	BLACK	249 840 CSA24	1-19/32"
	YASO27R2N	2												
4/0(19STR) AL, CU 4/0(6/1) ACSR	YAS28R2N	1	UK840(2) U249(1)	UK840(2) U249(1)	UK840(2) U249(1)	UK840(2) U249(1)	UK840(2) U249(1)	----	----	W249 WK840 (4)	----	PINK	249 840 CSA24	1-19/32"
	YASO28R2N	2												

D

D

C

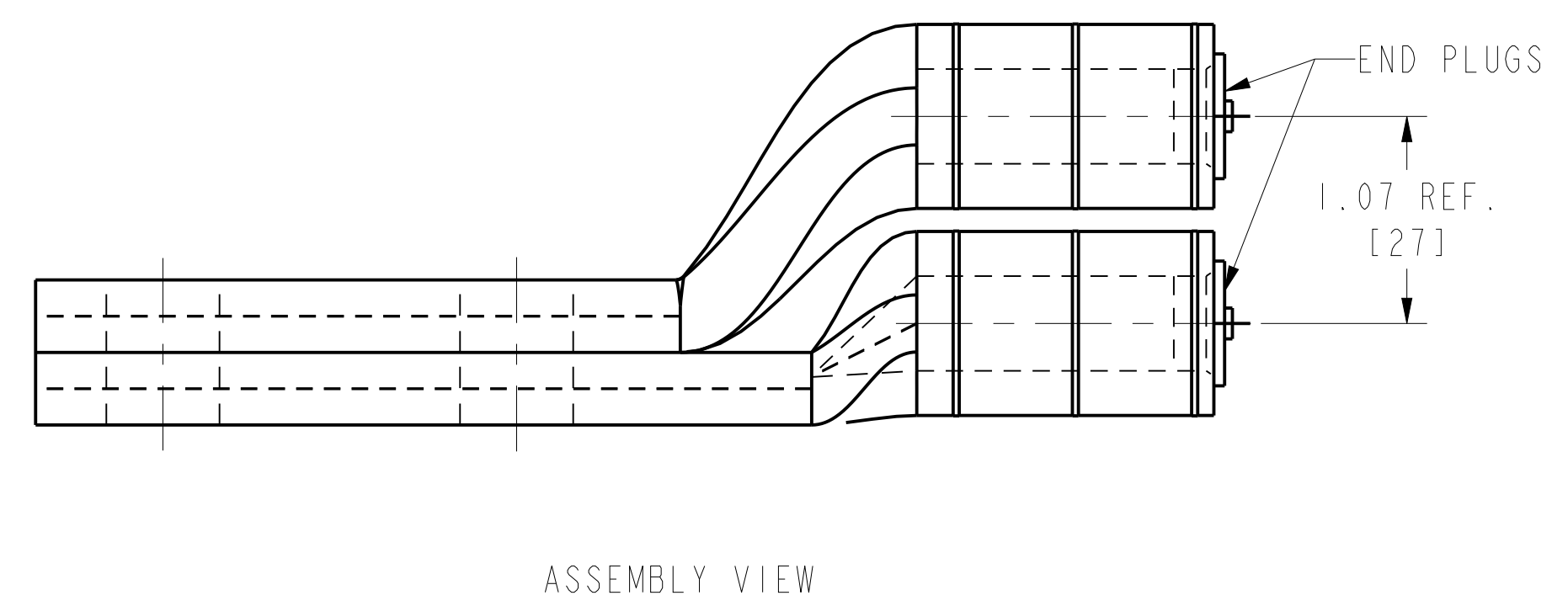
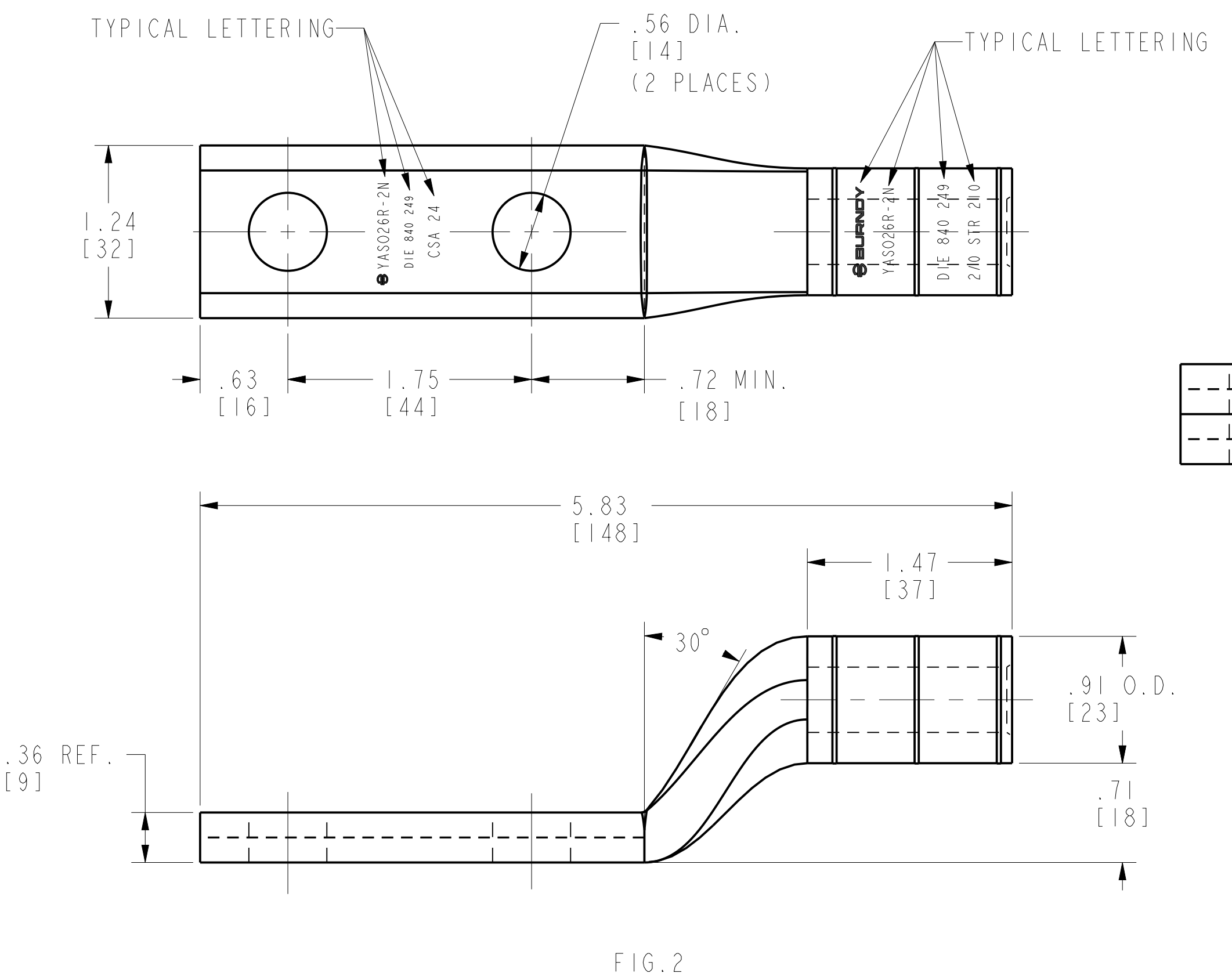
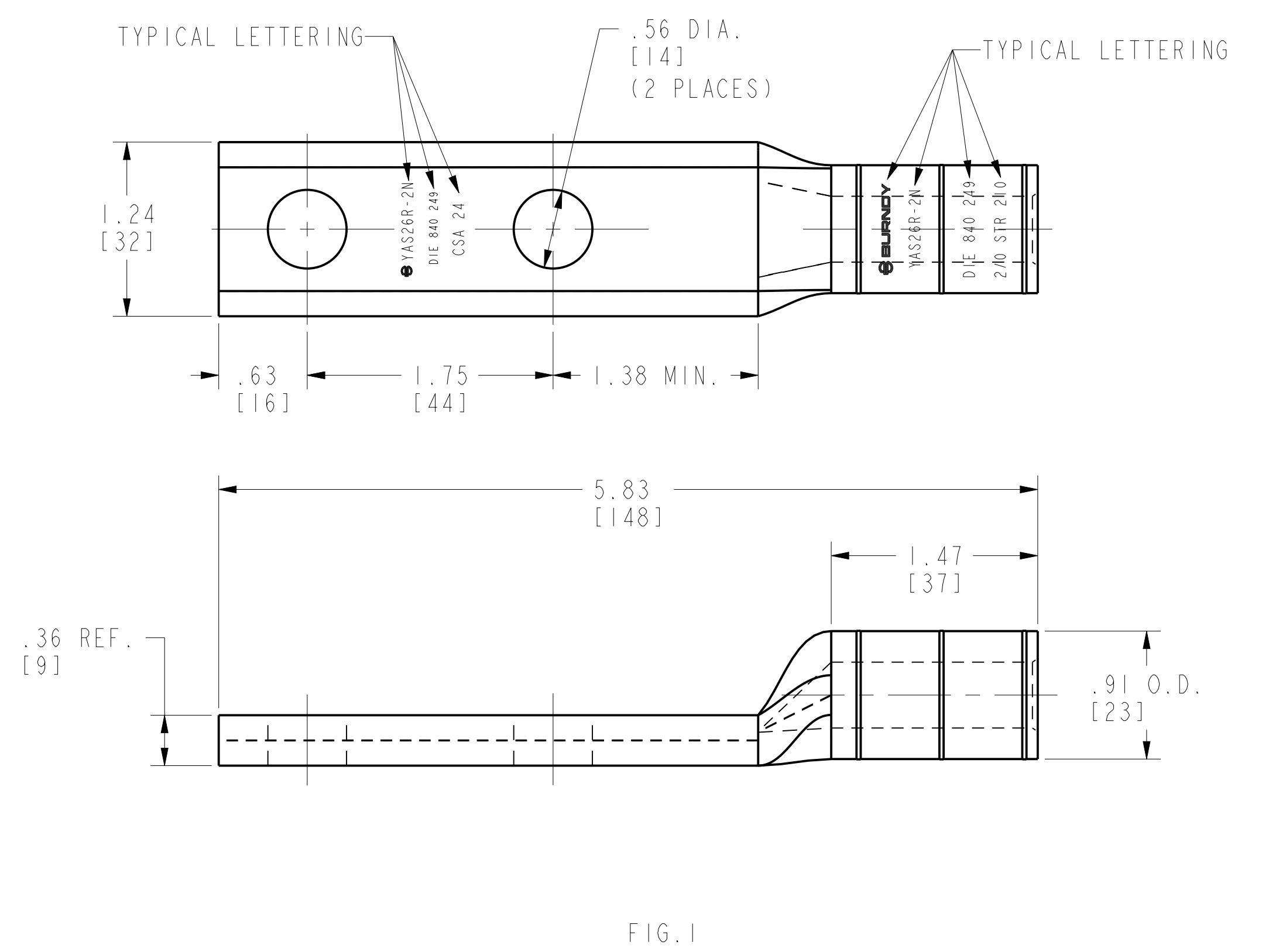
C

B

B

A

A



- NOTES:
- MATERIAL: ALUMINUM TUBING.
  - FINISH: TIN PLATING IS OPTIONAL, ADD -TN TO CAT. NO.
  - DIMENSIONS IN BRACKETS [ ] ARE IN MILLIMETERS ROUNDED OFF TO THE NEAREST MILLIMETER, UNLESS OTHERWISE NOTED, AND ARE FOR REFERENCE ONLY.
  - PT6515 ADAPTOR IS REQUIRED FOR U-DIES IN Y45.
  - PUADP-1 ADAPTOR IS REQUIRED FOR U-DIES IN Y46.
  - OPTIONAL SEALED BARREL: ADD '-P' TO CATALOG NO.
  - TERMINALS ARE PREFILLED WITH PENETROX™ A13 AND SEALED.

TO ORDER BURNDY® PRODUCTS CALL		STACKING HYLUG™	
UNITED STATES 1-800-346-4175 (LONDONDERRY, NH)		ITEM NO: N/A	CAT. NO: YAS-R-2N, YASO-R-2N (TABLE)
CANADA: 1-800-361-6975 (QUEBEC) 1-800-387-6487 (ALL OTHER PROVINCES)		DRAWN BY: J.MICHAUD 12/09/94	CHECKER: J.MICHAUD 12/09/94
FOR PRODUCT INFO: <a href="http://www.burndy.com">http://www.burndy.com</a>		DSN APPVL: C.PALAGI 12/09/94	MFG APPVL: N/A
		GA APPVL: D.VARIO 12/09/94	MKT APPVL: D.HAMILTON 12/09/94
		PROD FAM: CM&R Compression	DRAWING NO: SE208417
		PROJECT #: --	SCALE: 1:2
		DOCUMENT TYPE: Sales	SHEET 2 OF 4
		REL LEVEL: Released	REV: A

REV: PEO200

CONDUCTOR CU & AL	CATALOG NO.	FIG. NO.	DIMENSIONS								INSTALLATION TOOLING TOOL, DIE & NO. OF CRIMPS								COLOR CODED END PLUG	DIE INDEX	WIRE STRIP LENGTH	
			B	C	H	L	M REF	O.D.	T REF.	Z MIN.	Y35	Y39	Y750	Y45 4	Y46 5	Y48B	Y60BHU	MD6				OUR840
250, 300(37STR) AL, CU 266(18/1) ACSR	YAS30R2N	1	1.85 [47]	1.22 [31]	--	6.59 [167]	1.56 [40]	1.24 [31]	.40 [10]	1.79 [45]	U705 (2)	U705 (2)	U705 (2)	U705 (2)	U705 (2)	C317 (1)	L317 (1)	--	--	BLUE	317 705 KI-1/8-1 CSA26	2"
	YASO30R2N	2	1.85 [47]	1.22 [31]	.90 [23]	6.59 [167]	1.56 [40]	1.24 [31]	.40 [10]	.72 [18]	U317 (2)	U317 (2)	U317 (2)	U317 (2)	U317 (2)	C317 (1)	L317 (1)	--	--	BLUE	317 705 KI-1/8-1 CSA26	2"
350(37STR) AL, CU 336(18/1) ACSR	YAS321R2N	1	1.85 [47]	1.24 [31]	--	6.64 [169]	1.56 [40]	1.24 [31]	.39 [10]	1.79 [45]	U705 (2)	U705 (2)	U705 (2)	U705 (2)	U705 (2)	C317 (1)	L317 (1)	--	--	GREEN	317 705 KI-1/8-1 CSA26	2"
	YASO321R2N	2	1.85 [47]	1.24 [31]	.90 [23]	6.64 [169]	1.56 [40]	1.24 [31]	.39 [10]	.72 [18]	U317 (2)	U317 (2)	U317 (2)	U317 (2)	U317 (2)	C317 (1)	L317 (1)	--	--	GREEN	317 705 KI-1/8-1 CSA26	2"
400(37STR) AL, CU 397(18/1) ACSR	YAS33R2N	1	2.30 [58]	1.68 [43]	--	7.18 [182]	1.56 [40]	1.24 [31]	.44 [10]	1.82 [46]	U705 (2)	U705 (2)	U705 (2)	U705 (2)	U705 (2)	C317 (1)	L317 (1)	--	--	GREEN	317 705 KI-1/8-1 CSA26	2"
	YASO33R2N	2	2.30 [58]	1.68 [43]	.90 [23]	7.18 [182]	1.56 [40]	1.24 [31]	.44 [10]	.72 [18]	U317 (3)	U317 (3)	U317 (3)	U317 (3)	U317 (3)	C317 (1)	L317 (1)	--	--	GREEN	317 705 KI-1/8-1 CSA26	2"

REV	DATE	DESCRIPTION	ECO	BY	C'H'K.
A	2021-05-05 01:00:00 EDT	REDRAWN TO CREO	21050600	899R	SS

D

D

C

C

B

B

A

A

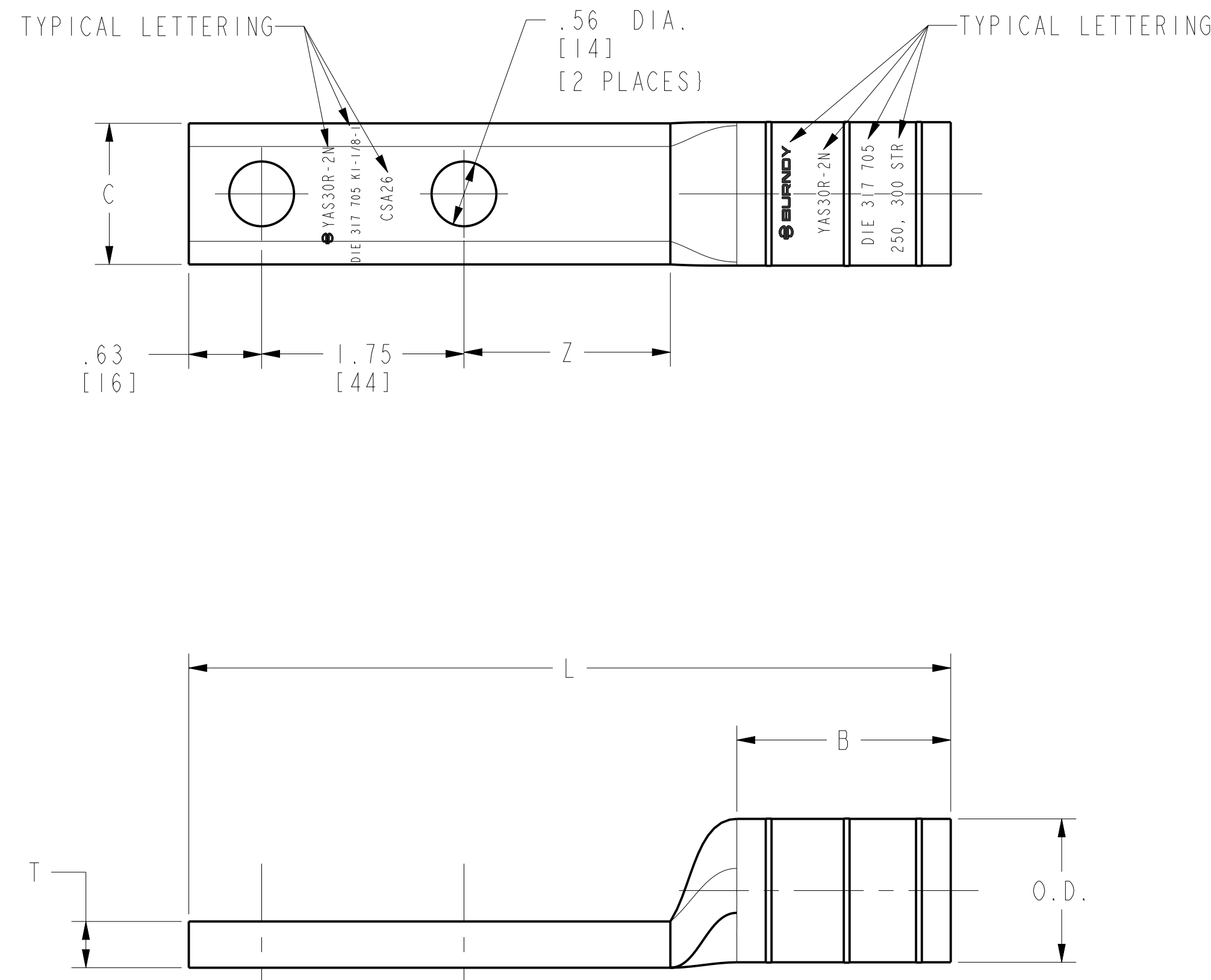


FIG. 1

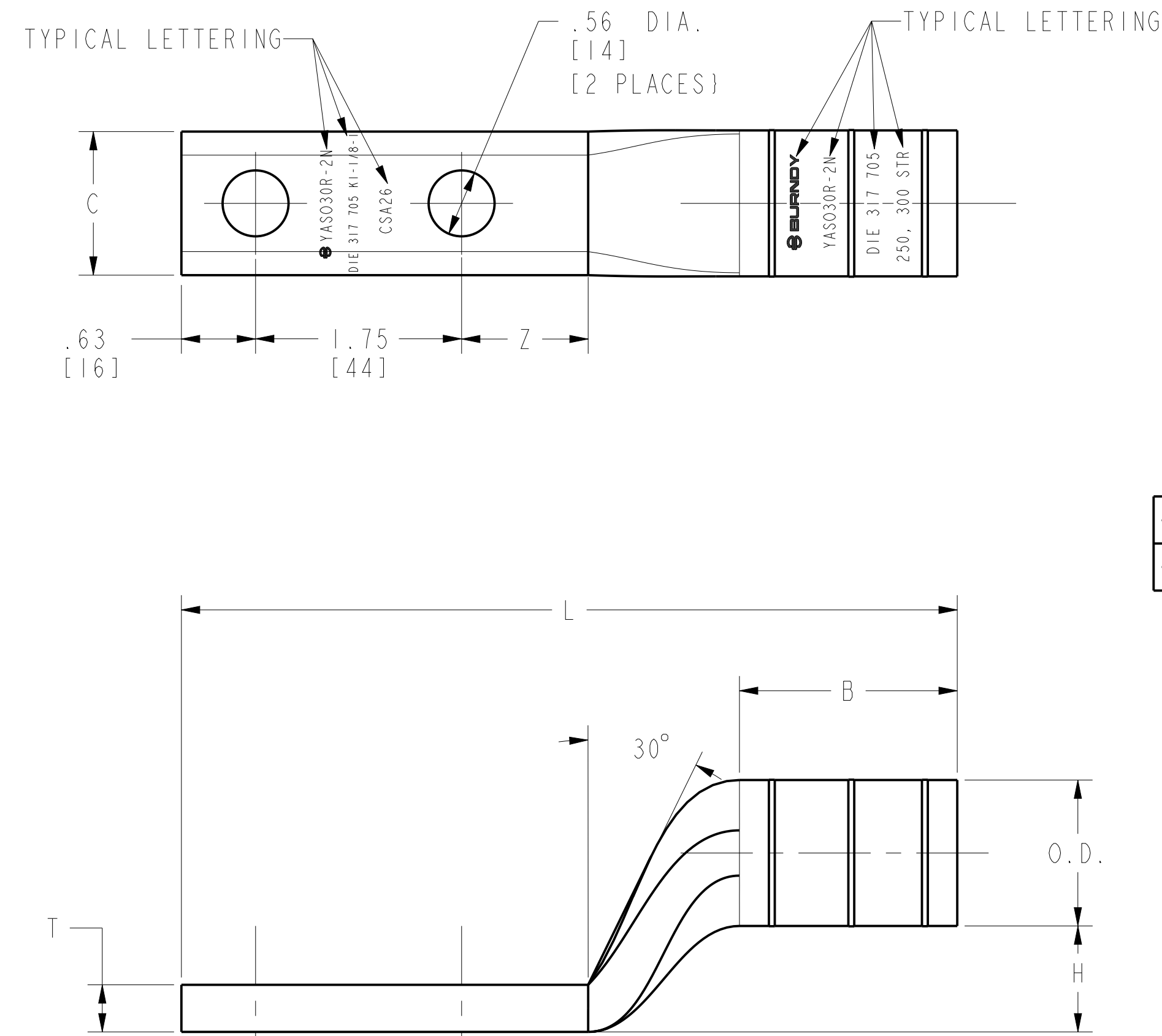
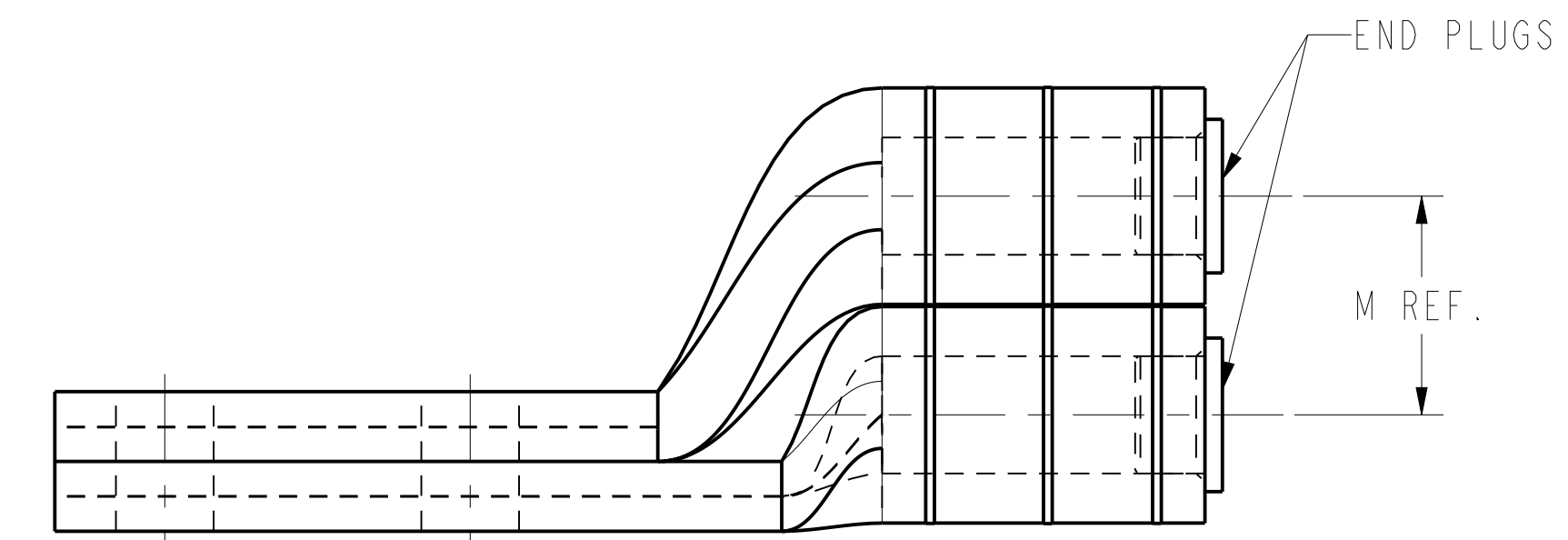


FIG. 2



ASSEMBLY VIEW

NOTES:

1. MATERIAL: ALUMINUM TUBING.
2. FINISH: TIN PLATING IS OPTIONAL, ADD -TN TO CAT. NO.
3. DIMENSIONS IN BRACKETS [ ] ARE IN MILLIMETERS ROUNDED OFF TO THE NEAREST MILLIMETER, UNLESS OTHERWISE NOTED, AND ARE FOR REFERENCE ONLY.
4. PT6515 ADAPTOR IS REQUIRED FOR U-DIES IN Y45.
5. PUADP-1 ADAPTOR IS REQUIRED FOR U-DIES IN Y46.
6. OPTIONAL SEALED BARREL: ADD '-P' TO CATALOG NO.
7. TERMINALS ARE PREFILLED WITH PENETROX™ A13 AND SEALED.

TO ORDER BURNDY® PRODUCTS CALL UNITED STATES 1-800-346-4175 (LONDONDERRY, NH) CANADA: 1-800-361-6975 (QUEBEC) 1-800-387-6487 (ALL OTHER PROVINCES) FOR PRODUCT INFO: <a href="http://www.burndy.com">http://www.burndy.com</a>		STACKING HYLUG™	
		ITEM NO: N/A CAT. NO: YAS-R-2N, YASO-R-2N (TABLE)	DRAWN BY: J.MICHAUD 12/09/94 CHECKER: J.MICHAUD 12/09/94 DSN APPVL: C.PALAGI 12/09/94 MFG APPVL: N/A -- QA APPVL: D.VARIO 12/09/94 MKT APPVL: D.HAMILTON 12/09/94
PROD FAM: CM&R Compression		DRAWING NO: SE208417	REV: A
PROJECT #: --		SIZE: D	SHEET 3 OF 4
DOCUMENT TYPE: Sales			
REL LEVEL: Released			

REV: PEO200

CONDUCTOR CU & AL	CATALOG NO.	FIG. NO.	DIMENSIONS								INSTALLATION TOOLING TOOL, DIE & NO. OF CRIMPS								COLOR CODED END PLUG	DIE INDEX	WIRE STRIP LENGTH	
			B	C	H	L	M REF.	O.D.	T REF.	Z MIN.	Y35	Y39	Y750	Y45 4	Y46 5	Y48B	Y60BHU	MD6				OUR840
500(37STR) AL, CU 477(18/1) ACSR	YAS361R2N	1	2.46 [62]	1.68 [43]	--	7.55 [192]	1.80 [46]	1.50 [38]	.47 [12]	1.98 [50]	U608 (4)	U608 (4)	U608 (4)	U608 (4)	U608 (4)	C722 (2)	L609 (2)	--	--	PINK	608 722 KI-5/16 CSA28	2-19/32"
	YASO361R2N	2	2.46 [62]	1.68 [43]	1.34 [35]	7.55 [192]	1.80 [46]	1.50 [38]	.47 [12]	.88 [22]	U608 (4)	U608 (4)	U608 (4)	U608 (4)	U608 (4)	C722 (2)	L609 (2)	--	--	PINK	608 722 KI-5/16 CSA28	2-19/32"
700(61STR) AL, CU 750(61STR) AL, CU	YAS39A2N	1	2.46 [62]	1.68 [43]	--	7.63 [194]	1.80 [46]	1.50 [38]	.47 [12]	1.98 [50]	U608 (4)	U608 (4)	U608 (4)	U608 (4)	U608 (4)	C722 (2)	L608 (2)	--	--	YELLOW	608 722 KI-5/16 CSA28	2-19/32"
	YASO39A2N	2	2.46 [62]	1.68 [43]	1.34 [35]	7.63 [194]	1.80 [46]	1.50 [38]	.47 [12]	.88 [22]	U608 (4)	U608 (4)	U608 (4)	U608 (4)	U608 (4)	C722 (2)	L608 (2)	--	--	YELLOW	608 722 KI-5/16 CSA28	2-19/32"

REV	DATE	DESCRIPTION	ECO	BY	C'H'K.
A	2021-05-05 01:00:00 EDT	REDRAWN TO CREO	21050600	899R	SS

D

D

C

C

B

B

A

A

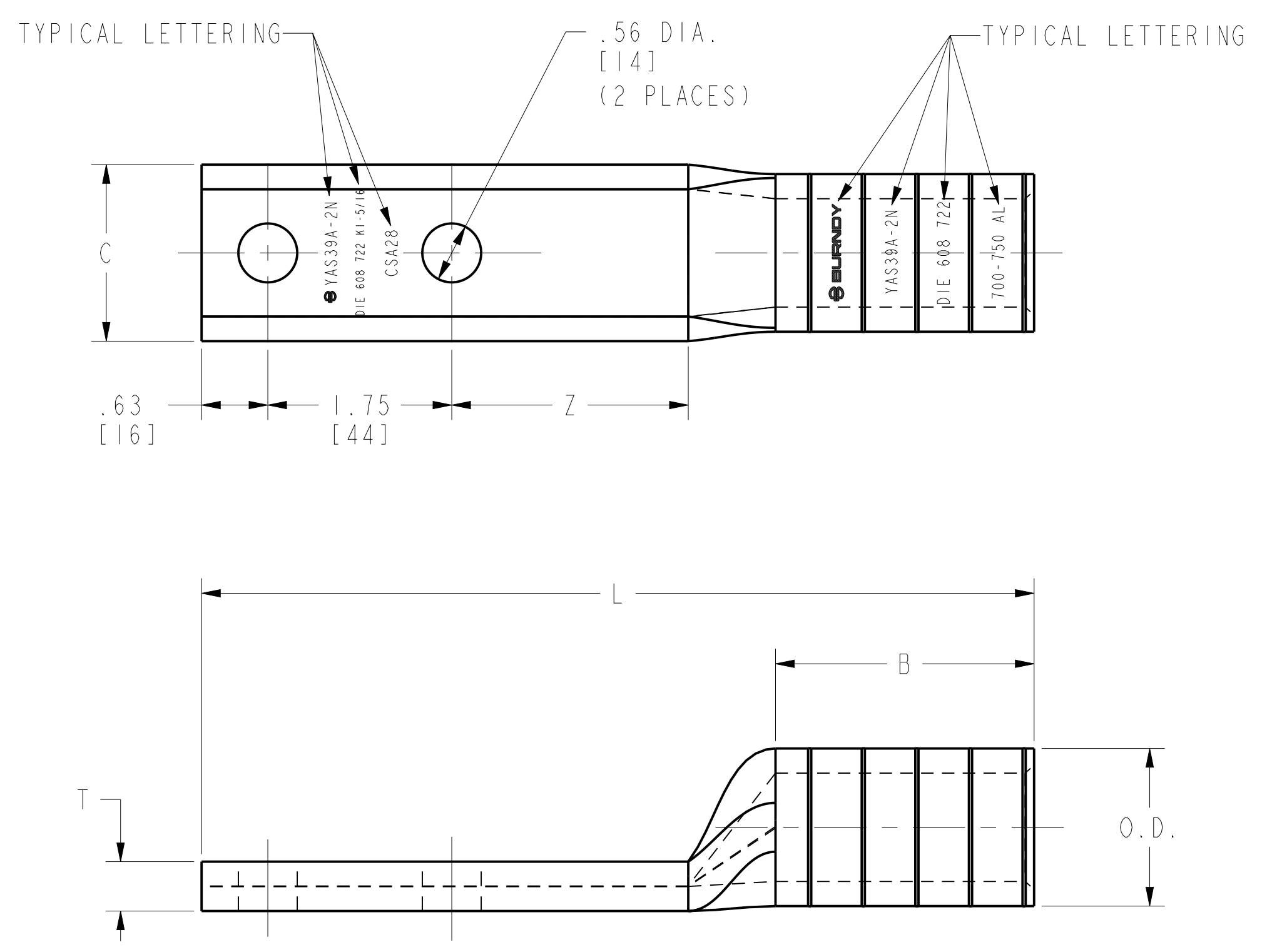


FIG. 1

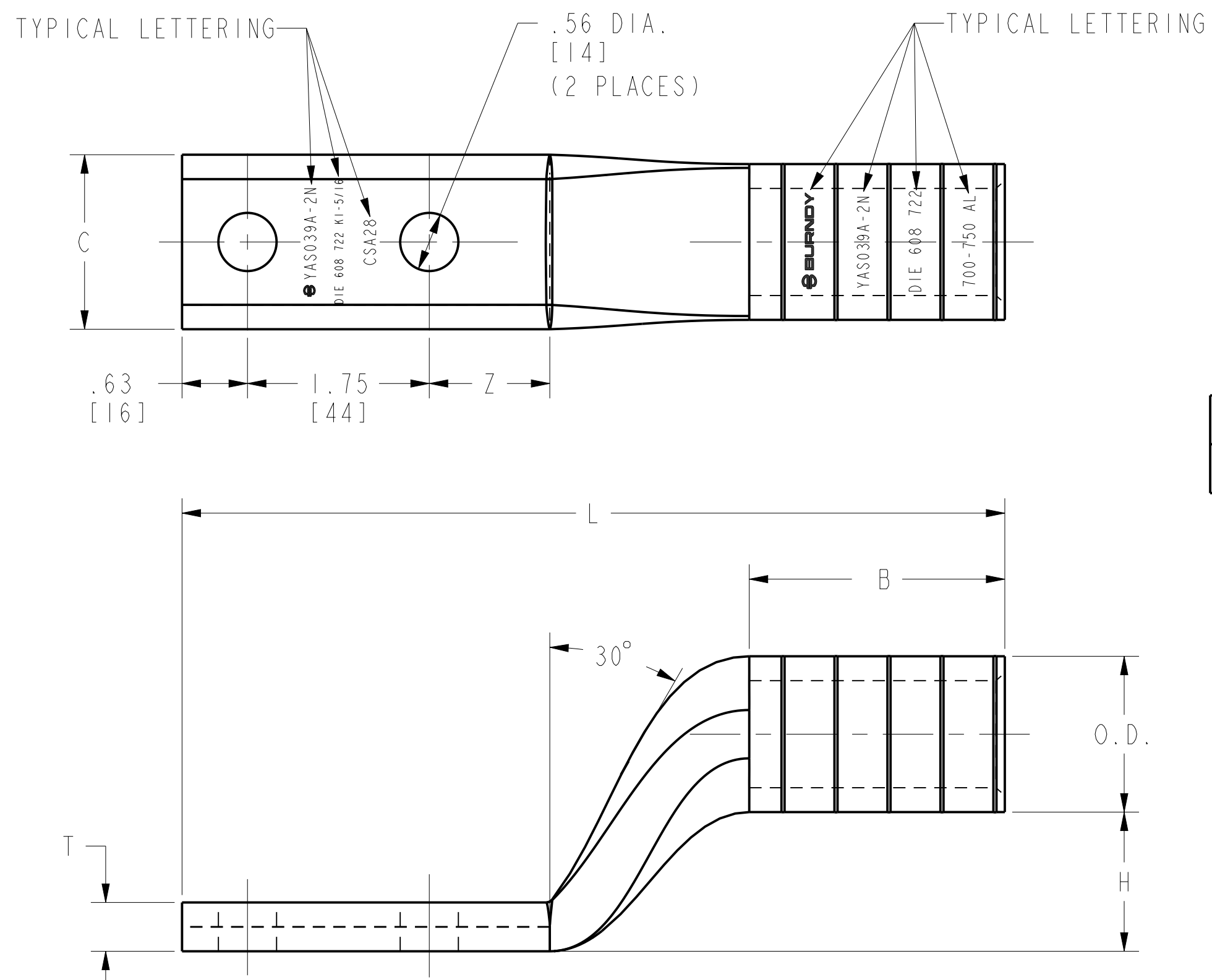
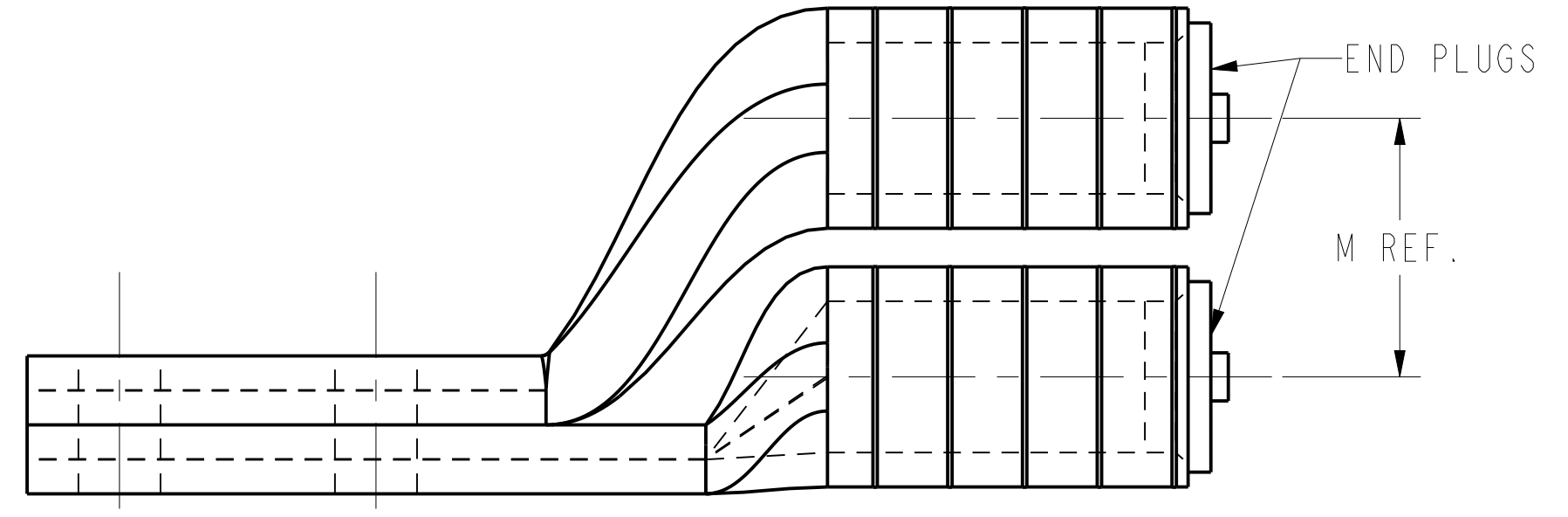


FIG. 2



ASSEMBLY VIEW

- NOTES:
1. MATERIAL: ALUMINUM TUBING.
  2. FINISH: TIN PLATING IS OPTIONAL, ADD -TN TO CAT. NO.
  3. DIMENSIONS IN BRACKETS [ ] ARE IN MILLIMETERS ROUNDED OFF TO THE NEAREST MILLIMETER, UNLESS OTHERWISE NOTED, AND ARE FOR REFERENCE ONLY.
  4. PT6515 ADAPTOR IS REQUIRED FOR U-DIES IN Y45.
  5. PUADP-1 ADAPTOR IS REQUIRED FOR U-DIES IN Y46.
  6. OPTIONAL SEALED BARREL: ADD '-P' TO CATALOG NO.
  7. TERMINALS ARE PREFILLED WITH PENETROX™ A13 AND SEALED.

TO ORDER BURNDY® PRODUCTS CALL		STACKING HYLUG™	
UNITED STATES 1-800-346-4175 (LONDONDERRY, NH)		ITEM NO: N/A	CAT. NO: YAS-A-2N, YASO-A-2N, YAS-R-2N, YASO-R-2N
CANADA: 1-800-361-6975 (QUEBEC) 1-800-387-6487 (ALL OTHER PROVINCES)		DRAWN BY: J. MICHAUD 12/09/94	CHECKER: J. MICHAUD 12/09/94
FOR PRODUCT INFO: <a href="http://www.burndy.com">http://www.burndy.com</a>		DSN APPVL: C. PALAGI 12/09/94	MFG APPVL: N/A
		QA APPVL: D. VARIO 12/09/94	MKT APPVL: D. HAMILTON 12/09/94
		PROD FAM: CM&R Compression	DRAWING NO: SE208417
		PROJECT #: --	SCALE: 1:2
		DOCUMENT TYPE: Sales	SHEET 4 OF 4
		REL LEVEL: Released	REV: A

REV: PEO200