

DRAWING NO. SE209240	7			6			5			4			3			2		1			
	CATALOG NUMBER	CODE (AWG)	NAVY	METRIC SIZE (CLASS 2)	BOLT SIZE	METRIC BOLT SIZE	FIG. NO.	B	C	H REF.	K DIA.	L	N	O.D.	T REF.	Z MIN.	REV	DATE	DESCRIPTION	ECO	BY
YA28L45	4/0 AWG	200	-----	1/2	M12	1	.88 [22]	1.02 [26]	1.49 [38]	.53 [13]	2.39 [61]	.53 [13]	.69 [18]	.14 [4]	.55 [14]	C	2023-01-06 00:00:00 EST	UPDATED AS PER MU	221219026524	YR	RA
YA28L90						2		1.62 [41]	.53 [13]	1.54 [39]	.53 [13]										
YA28L1745						1		1.49 [38]	.69 [18]	2.64 [67]	.66 [17]										
YA28L1790						2		1.02 [26]	1.62 [41]	1.79 [45]	.66 [17]										
YA28L5645						1		1.05 [27]	1.49 [38]	2.81 [71]	.75 [19]										
YA28L5690						2		1.05 [27]	1.60 [41]	1.97 [50]	.75 [19]										

CONNECTOR SIZE	TOLERANCES					
	B	C	K DIA.	L	N	O.D.
-8C THRU -25	±.06	±.04	±.02	±.09	±.03	±.01
-26 THRU -34	±.08	±.04	±.02	±.12	±.03	±.01
-35 AND UP	±.09	±.06	±.02	±.15	±.06	±.01

TOLERANCE BLOCK

INSTALLATION TOOLING (# CRIMPS)																	
CATALOG NO.	COLOR CODE	DIE INFORMATION		MECHANICAL RATCHET				HYDRAULIC							DIELESS (# CRIMPS)	WIRE STRIP LENGTH	
		DIE INDEX	TYPE	YIMRTC	OUR840	MD6 MD7	MD6--R2 MD7-34R	PATMD6 PAT600	Y34A Y34B Y34BH	Y35, Y39 Y750, PAT750	Y46 PAT46	Y45	Y48B	Y60BHU			
YA28L45	PURPLE	15	PURPLE DIE SET	-----	X28RT(3)	X28RT(2)	W28RT(2)	W28VT(2)	-----	U28RT(1)	U28RT(1)	U28RT(1)	C28R(1)	L28RT(1)	MECHANICAL: MY29-3(1) MY29-11(1) MRC840(2)	1-1/8"	
YA28L90			NEST	-----	-----	-----	-----	-----	B28D(1) A28D(1)	U28D-1(1)	U28D-1(1)	U28D-1(1)	C28D(1)	-----			HYDRAULIC: Y644(1) Y81KFT(2) Y4PC834(2)
			INDENTOR	-----	-----	-----	-----	-----	Y34PR	Y34PR	Y34PR	Y34PR	Y48PR	-----			

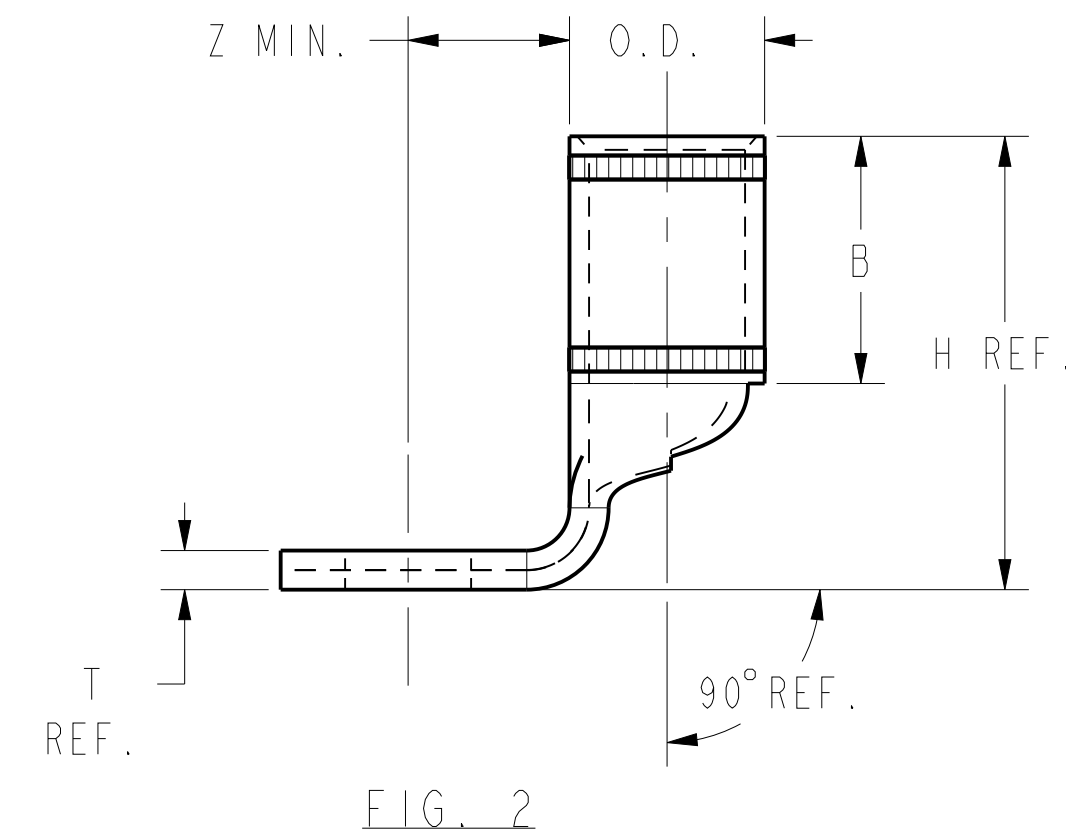
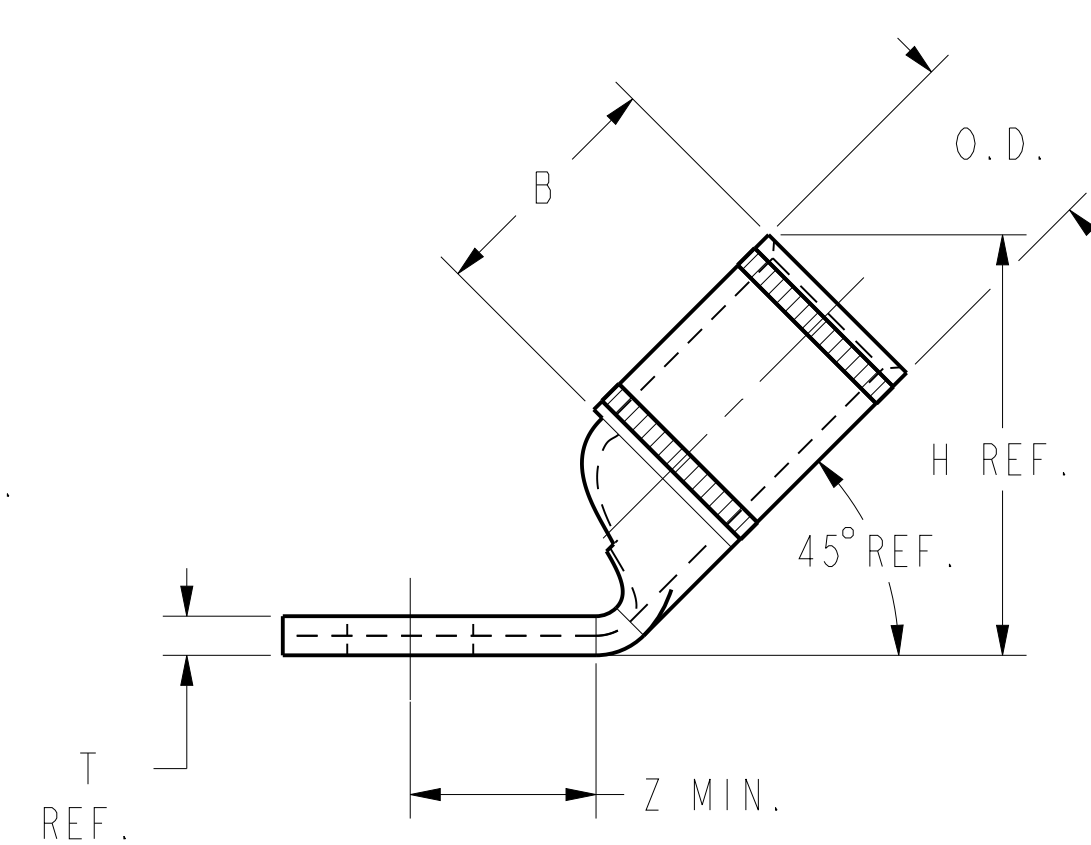
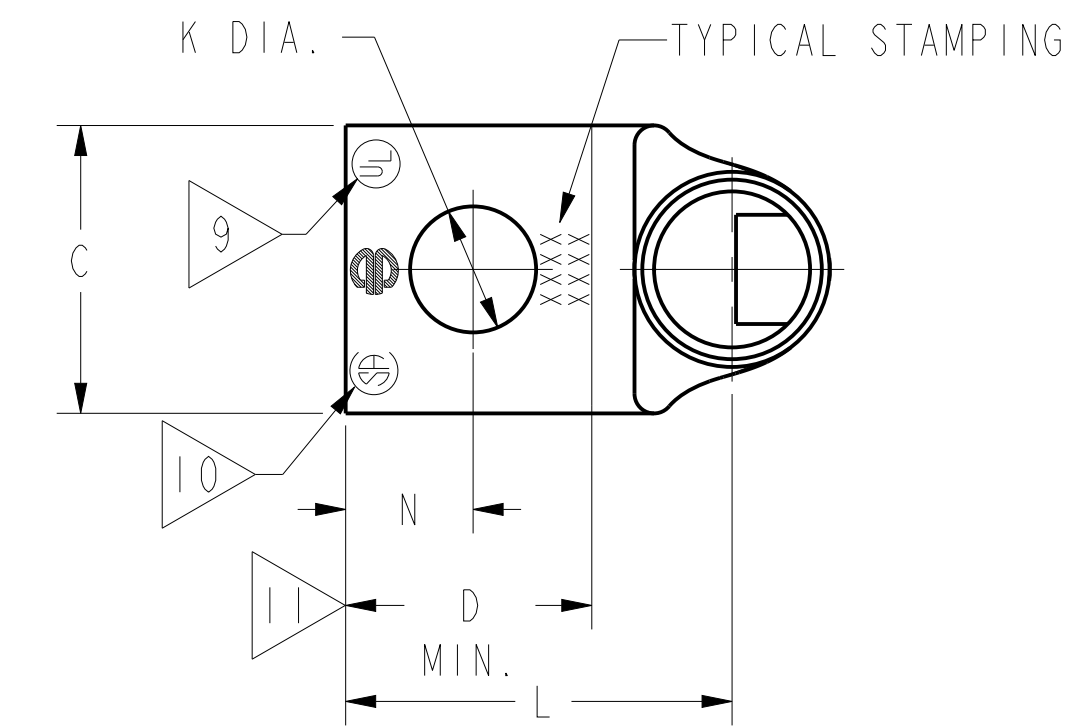
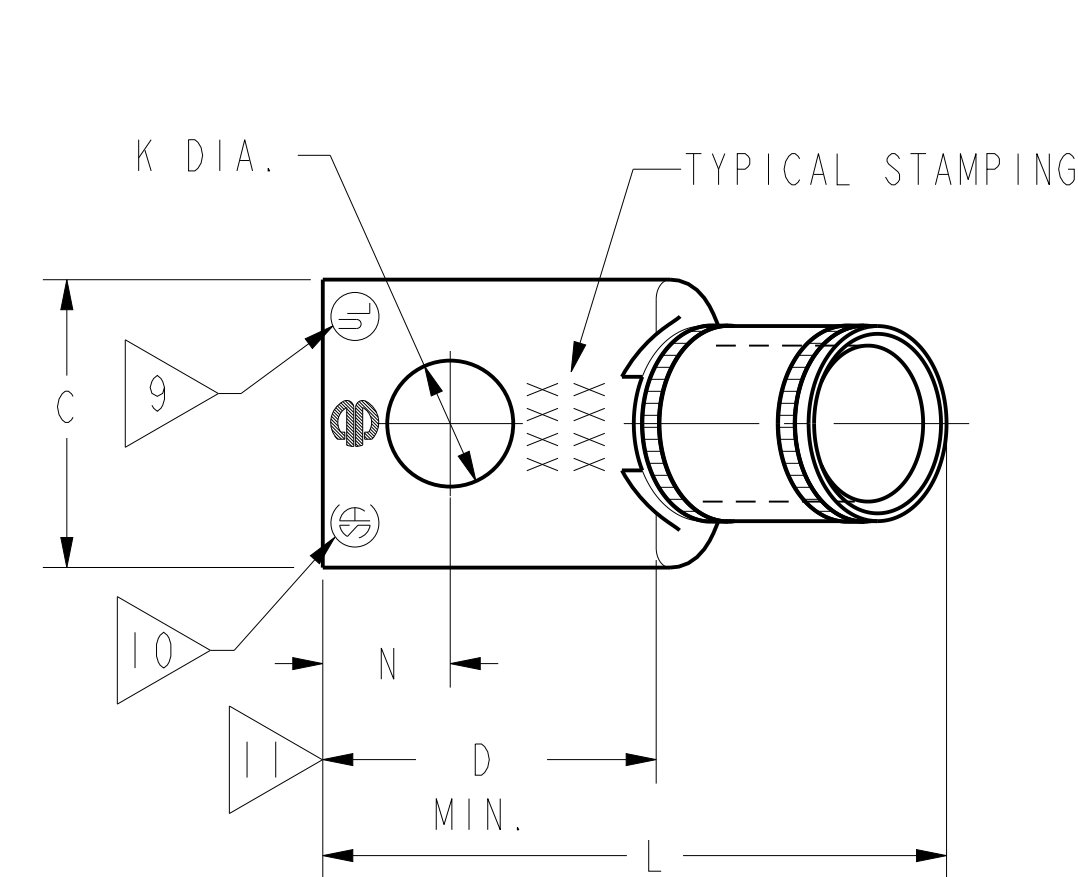


FIG. 1

FIG. 2

REFERENCE: SD079848

NOTES:

- MATERIAL : COPPER TUBING.
- FINISH: ELECTRO-TIN PLATED.
- CATALOG # PT6515 ADAPTOR IS REQUIRED TO USE "U" DIES IN Y45 SERIES TOOLS.
- CATALOG # PUADP-1 ADAPTOR IS REQUIRED TO USE "U" DIES IN Y46 SERIES TOOLS.
- Y35P3 INDENTOR ADAPTOR REQUIRED FOR Y34PR INDENTOR.
- PERMANENT DIE TOOLING.
- DIMENSIONS IN BRACKETS [] ARE IN MILLIMETERS ROUNDED OFF TO THE NEAREST MILLIMETER, UNLESS OTHERWISE NOTED, AND ARE FOR REFERENCE ONLY.
- FOR USE BY CUSTOMERS THAT HAVE THIS HYPRESS™. NO NEW Y34A HYPRESS™ TOOLS ARE BEING PROCESSED. Y34A USES A--D NEST DIES ONLY.
- CONNECTORS ARE UL LISTED; UNDRILLED VERSIONS ARE NOT UL LISTED.
- CONNECTORS ARE CSA CERTIFIED; UNDRILLED VERSIONS ARE NOT CSA CERTIFIED.
- FOR UNDRILLED VERSIONS ADD SUFFIX "-U" TO END OF CATALOG NUMBER. FOR UNDRILLED VERSIONS, USE D MIN. = N MAX. + Z MIN.
- "X", "W-RT", "W-VT", "U", & "L" DIE SETS ARE COLOR CODED. "A", "B", AND "C" DIES ARE NOT COLOR CODED. NESTS AND INDENTOR TYPE ARE NOT COLOR CODED.
- ADD SUFFIX "LD" = LEAD PLATING, "TZ" = TIN-ZINC, "SV" = SILVER, "NK" = NICKEL PLATING.

TO ORDER BURNDY@PRODUCTS CALL		COPPER HYLUG™	
UNITED STATES: 1-800-346-4175 (LONDONDERRY, NH)		ITEM NO: N/A	SCALE: 1:1
CANADA: 1-800-361-6975 (QUEBEC) 1-800-387-6487 (ALL OTHER PROVINCES)		CAT. NO: YA28-L-- (TABLE)	
FOR PRODUCT INFO: http://www.burndy.com		DRAWN BY: J MICHAUD 12/08/94	
		CHECKER: D FELLION 12/08/94	
		DSN APPVL: C PALAGI 12/08/94	
		MFG APPVL: -- --	
		QA APPVL: C ACKERMAN 12/23/94	
		MKT APPVL: T NELSON 12/15/94	
		PROD FAM: CM&R COMPRESSION	
		PROJECT #: --	
		DOCUMENT TYPE: Sales	
		REL LEVEL: Released	

REV: CREO_08/10/21