

CATALOG NUMBER	STRANDED COPPER CONDUCTOR ACCOMMODATED			BOLT SIZE	METRIC BOLT SIZE	FIG. NO.	DIMENSIONS								
	CODE (AWG)	NAVY	METRIC SIZE (CLASS 2)				B	C	H REF	K DIA	L	N	O.D.	T REF	Z MIN
YA8C-TC10-45	#8 AWG #6 SOL	23	10mm <sup>2</sup> STR [4.2]	#10	-----	1	.81 [21]	.41 [10]	.94 [24]	.21 [5]	1.46 [37]	.25 [6]	.27 [7]	.08 [2]	.27 [7]
YA8C-TC10-90							2	.41 [10]	1.17 [30]	.21 [5]	.68 [17]	.25 [6]	.27 [7]		
YA8C-TC14-45				1/4	M6	1	.44 [11]	.94 [24]	.27 [7]	1.57 [40]	.31 [8]	.33 [8]			
YA8C-TC14-90						2	.44 [11]	1.16 [29]	.27 [7]	.86 [22]	.31 [8]	.33 [8]			
YA8C-TC38-45				3/8	-----	1	.58 [15]	.93 [24]	.40 [10]	1.71 [43]	.41 [10]	.42 [11]			
YA8C-TC38-90							2	.81 [21]	.58 [15]	1.12 [28]	.40 [10]	1.04 [26]	.41 [10]	.42 [11]	

REV.	DATE	DESCRIPTION	ECO	BY	C'K'D.
1	03/18/96	ADD PHONE # & ADD 'TM'. CHG. TYPO ON 'C' TOL.	2801	JWA	JLM

CONNECTOR SIZE	TOLERANCES					
	B	C	K DIA	L	N	O.D.
-8C THRU -25	±.06	+0.04 -0.02	±.02	±.09	±.03	±.01
-26 THRU -34	±.08	+0.04 -0.06	±.02	±.12	±.03	±.01
-35 AND UP	±.09	±.06	±.02	±.15	±.06	±.01

TOLERANCE BLOCK

INSTALLATION TOOLING (# CRIMPS)

CATALOG NO.	DIE INFORMATION			MECHANICAL RATCHET					HYDRAULIC				DIELESS (# CRIMPS)	WIRE STRIP LENGTH		
	COLOR CODE	DIE INDEX	TYPE	Y2MR	OUR840	MD6 MD7	MD6--R2 BAT500	MD7-34R	Y34A Y34B Y34BH	Y35, Y39 Y750, BAT35 BAT750	Y46	Y45			Y48B	Y60BHU
YA8C-TC--45	RED	49	RED DIE SET	RED (2)	X8CRT(2)	W8CVT(2)	W8CVT(2)	W8CVT(2)	-----	U8CRT(2)	U8CRT(2)	U8CRT(2)	-----	-----	RATCHET: Y8MRB-1(2) MECHANICAL: MY29-3(2) MY29-11(2)	1-3/16"
YA8C-TC--90			NEST INDENTOR	-----	-----	-----	-----	-----	-----	-----	-----	-----	-----	-----		

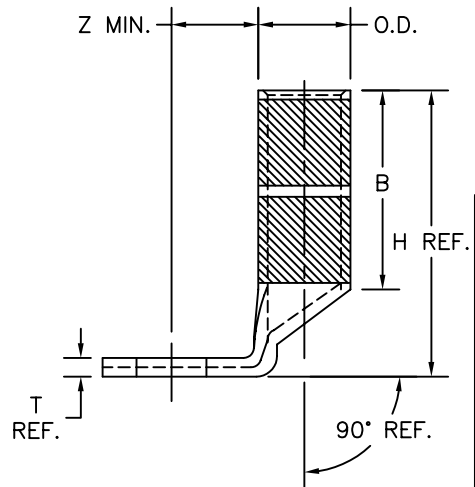
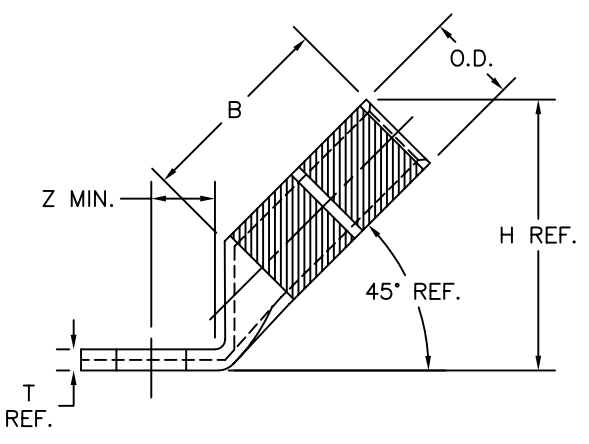
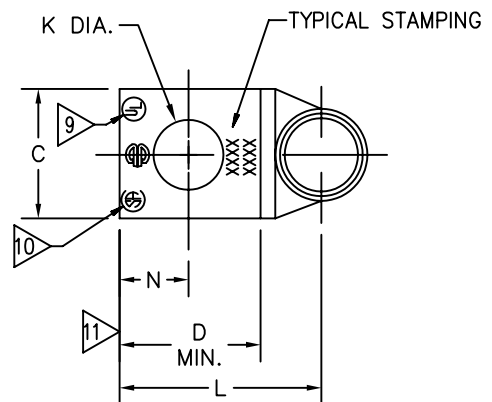
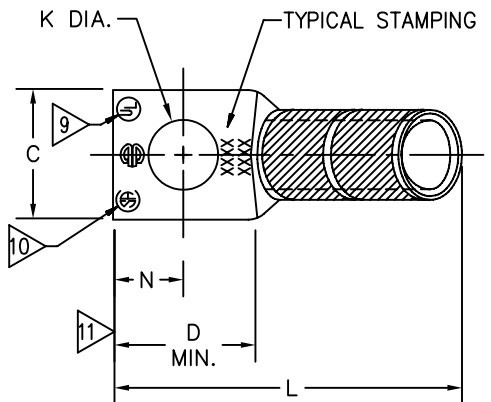


FIG. 1

FIG. 2

NOTES:

- MATERIAL: COPPER TUBING.
- FINISH: ELECTRO-TIN PLATED.
- CATALOG # PT6515 ADAPTOR IS REQUIRED TO USE "U" DIES IN Y45 SERIES TOOLS.
- CATALOG # PUADP-1 ADAPTOR IS REQUIRED TO USE "U" DIES IN Y46 SERIES TOOLS.
- Y35P3 INDENTOR ADAPTOR REQUIRED FOR Y34PR INDENTOR.
- PERMANENT DIE IN TOOLING.
- DIMENSIONS IN BRACKETS [ ] ARE IN MILLIMETERS ROUNDED OFF TO THE NEAREST MILLIMETER, UNLESS OTHERWISE NOTED, AND ARE FOR REFERENCE ONLY.
- FOR USE BY CUSTOMERS THAT HAVE THIS HYPRESS.™ NO NEW Y34A HYPRESSES™ ARE BEING PROCESSED. Y34A USES A--D NEST DIES ONLY.
- CONNECTORS ARE UL LISTED; UNDRILLED VERSIONS ARE NOT UL LISTED.
- CONNECTORS ARE CSA CERTIFIED; UNDRILLED VERSIONS ARE NOT CSA CERTIFIED.
- FOR UNDRILLED VERSIONS ADD SUFFIX "-U" TO END OF CATALOG NUMBER. FOR UNDRILLED VERSIONS, USE D MIN. = N MAX. + Z MIN.
- "X", "W-RT", "W-VT", "U", & "L" DIE SETS ARE COLOR CODED. "A", "B", AND "C" DIES ARE NOT COLOR CODED. NESTS AND INDENTOR TYPE ARE NOT COLOR CODED.

REFERENCE: SD79849

TO ORDER BURNDY® PRODUCTS CALL 1-800-346-4175  
MANCHESTER, NH 03109, USA  
FOR PRODUCT INFO = <http://www.fciconnect.com>

HYLUG™ (COPPER)

ITEM NO: ---	CAT NO: YA8C--TC- (TABLE)
SCALE: NTS	DRAWN BY: J. MICHAUD 01/17/95
CHECKER: D.FILLION 01/17/95	DSN APPVL: C.PALAGI 01/18/95
MFG APPVL: ---	QC APPVL: C. ACKERMAN 02/03/95
MKT APPVL: T. NELSON 01/25/95	PROD FAM: ---
PROJECT #: ---	SIZE: D
DOCUMENT TYPE: Sales	DRAWING NO: SE209241
REL LEVEL: AutoCAD	SHEET 1 OF 32

