

DRAWING NO. SE209241		7		6		5		4		3		2		1								
11	CATALOG NUMBER	STRANDED COPPER CONDUCTOR ACCOMMODATED		BOLT SIZE	METRIC BOLT SIZE	FIG. NO.	DIMENSIONS							REVI	DATE	DESCRIPTION	ECO	BY	C'H'K.			
		CODE (AWG)	NAVY				METRIC SIZE (CLASS 2)	B	C	H REF.	K DIA.	L	N	O.D.	T REF.	Z MIN.	C	11/09/2011 00:00:00 AM	TOOLING DETAILS UPDATED AS PER MARKUP	25811	DK	MA
		YA4CTC1045	#4 AWG				40	-----	#10	M5	1	1.12 [28]	.50 [13]	1.26 [32]	.21 [5]	1.74 [44]	.25 [6]	.34 [9]	.09 [2]	.27 [7]		
		2									1.56 [40]	.21 [5]	.78 [20]	.09 [2]	.27 [7]							
		1									1.16 [29]	.27 [7]	1.52 [39]	.09 [2]	.25 [6]							
2	1.12 [28]	.50 [13]		1.56 [40]	.27 [7]	.84 [21]					.25 [6]	.34 [9]	.09 [2]	.33 [8]								

CONNECTOR SIZE	TOLERANCES					
	B	C	K DIA.	L	N	O.D.
-8C THRU -25	±.06	±.04	±.02	±.09	±.03	±.01
-26 THRU -34	±.08	±.04	±.02	±.12	±.03	±.01
-35 AND UP	±.09	±.06	±.02	±.15	±.06	±.01

TOLERANCE BLOCK

INSTALLATION TOOLING (# CRIMPS)																
CATALOG NO.	DIE INFORMATION			MECHANICAL					HYDRAULIC					DIELESS (# CRIMPS)	WIRE STRIP LENGTH	
	COLOR CODE	DIE INDEX	TYPE	YIMRTC	OUR840	MD6 MD7	MD6--R2 MD7-34R	PATMD6 PAT600	8 Y34A Y34B Y34BH	5 Y750, BAT35 PAT750	5 4 Y46 PAT46	5 3 Y45	Y48B			Y60BHU

YA4CTC1045	GRAY	8 346	GRAY DIE SET	GRAY (4)	X4CRT(2)	X4CRT(2) W4CRT(2)	X4CRT(2) W4CRT(2)	X4CRT(2) W4CRT(2)	-----	U4CRT(2) U6CABT(2)	U4CRT(2) U6CABT(2)	U4CRT(2) U6CABT(2)	-----	-----	MECHANICAL: MY29-3(2) MY29-11(2) MRC840(2) HYDRAULIC: Y644(1) Y81KFT(1) YY4PC834(1)	1-3/16"	
YA4CTC1090			NEST	-----	-----	-----	-----	-----	B4CD(1) A4CD(1)	U4CD-1(1)	U4CD-1(1)	U4CD-1(1)	-----	-----			
YA4C45			INDENTOR	-----	-----	-----	-----	-----	-----	Y34PR	Y34PR	Y34PR	Y34PR	-----			-----
YA4C90			-----	-----	-----	-----	-----	-----	-----	-----	-----	-----	-----	-----			-----

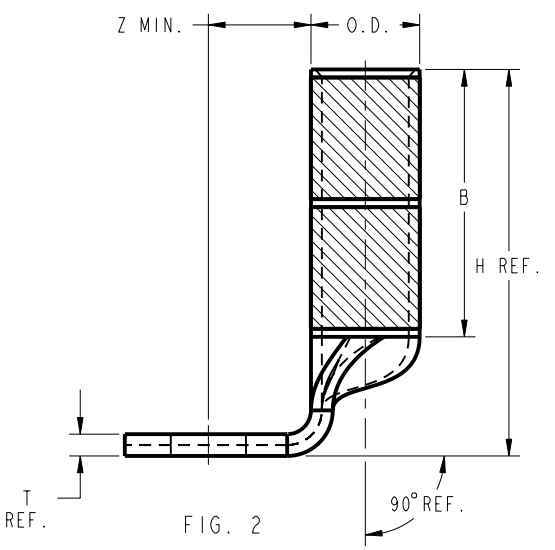
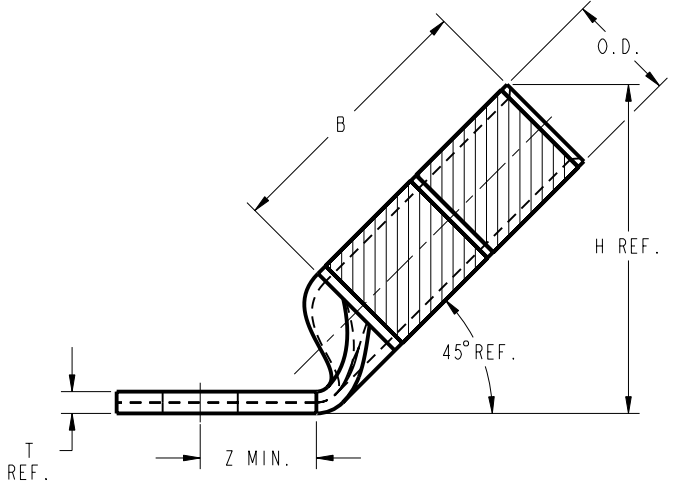
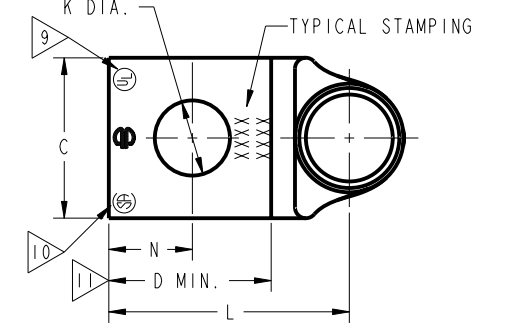
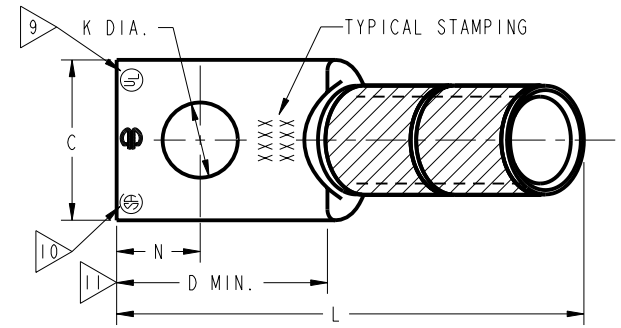


FIG. 1

FIG. 2

REFERENCE: SD79849

NOTES:

- MATERIAL : COPPER TUBING.
- FINISH: ELECTRO-TIN PLATED.
- CATALOG # PT6515 ADAPTOR IS REQUIRED TO USE "U" DIES IN Y45 SERIES TOOLS.
- CATALOG # PUADP-1 ADAPTOR IS REQUIRED TO USE "U" DIES IN Y46 SERIES TOOLS.
- Y35P3 INDENTOR ADAPTOR REQUIRED FOR Y34PR INDENTOR.
- PERMANENT DIE IN TOOLING.
- DIMENSIONS IN BRACKETS [] ARE IN MILLIMETERS ROUNDED OFF TO THE NEAREST MILLIMETER, UNLESS OTHERWISE NOTED, AND ARE FOR REFERENCE ONLY.
- FOR USE BY CUSTOMERS THAT HAVE THIS HYPRESS™. NO NEW Y34A HYPRESS™ TOOLS ARE BEING PROCESSED. Y34A USES A--D NEST DIES ONLY.
- CONNECTORS ARE UL LISTED; UNDRILLED VERSIONS ARE NOT UL LISTED.
- CONNECTORS ARE CSA CERTIFIED; UNDRILLED VERSIONS ARE NOT CSA CERTIFIED.
- FOR UNDRILLED VERSIONS ADD SUFFIX "-U" TO END OF CATALOG NUMBER. FOR UNDRILLED VERSIONS, USE D MIN. = N MAX. + Z MIN.
- "X", "W-RT", "W-VT", "U", & "L" DIE SETS ARE COLOR CODED. "A", "B", AND "C" DIES ARE NOT COLOR CODED. NESTS AND INDENTOR TYPE ARE NOT COLOR CODED.

TO ORDER BURNDY® PRODUCTS CALL		COPPER HYLUG™	
UNITED STATES 1-800-346-4175 (LONDONDERRY, NH)		ITEM NO: N/A	CAT. NO: YA4C- (TABLE)
CANADA: 1-800-361-6975 (QUEBEC) 1-800-387-6487 (ALL OTHER PROVINCES)		DRAWN BY: J.MICHAUD 1/17/95	CHECKER: D.FILLION 1/17/95
FOR PRODUCT INFO: http://www.burndy.com		DSN APPVL: C.PALAGI 1/18/95	MFG APPVL: N/A
		QA APPVL: C.ACKERMAN 2/03/95	MKT APPVL: T.NELSON 1/20/95
		PROJ #:	SCALE: NTS
		DOCUMENT TYPE: Sales	DRAWING NO: SE209241
		REL LEVEL: Released	SHEET 4 OF 32

REV: PE0200